



TRILOBITE TESTING, INC.

DRILL STEM TEST REPORT

John O. Farmer Inc.

6-15s-12e Wabaunsee Ks

370 W. Wichita Ave.
P.O. Box 352
Russell Ks. 67665
ATTN: Austin Klaus

Waugh C#1

Job Ticket: 49617

DST#: 1

Test Start: 2012.10.13 @ 15:01:38

GENERAL INFORMATION:

Formation: **Simpson Dolo.**

Deviated: No Whipstock: ft (KB)

Time Tool Opened: 16:24:53

Time Test Ended: 22:07:08

Test Type: Conventional Bottom Hole (Initial)

Tester: Gary Pevoteaux

Unit No: 56

Interval: 2993.00 ft (KB) To 3010.00 ft (KB) (TVD)

Reference Elevations: 1277.00 ft (KB)

Total Depth: 3010.00 ft (KB) (TVD)

1269.00 ft (CF)

Hole Diameter: 7.88 inches Hole Condition: Poor

KB to GR/CF: 8.00 ft

Serial #: 8352 Inside

Press @ Run Depth: 308.47 psig @ 2994.00 ft (KB)

Capacity: 8000.00 psig

Start Date: 2012.10.13

End Date: 2012.10.13

Last Calib.: 2012.10.13

Start Time: 15:01:43

End Time: 22:07:07

Time On Btm: 2012.10.13 @ 16:24:08

Time Off Btm: 2012.10.13 @ 19:26:53

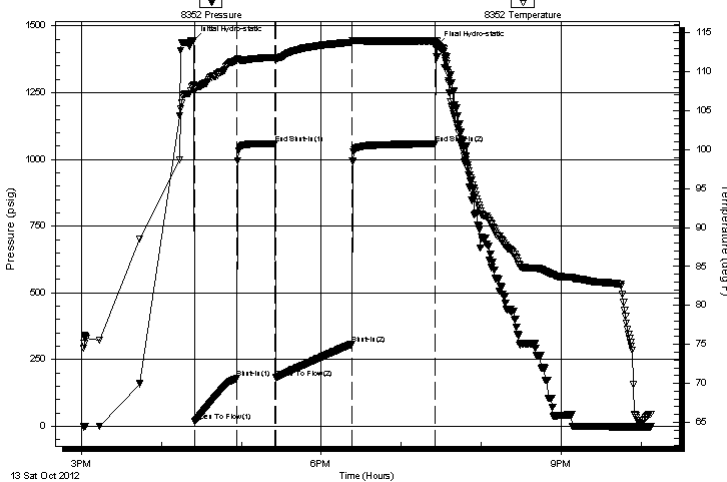
TEST COMMENT: IF: Fair blow . Slow increase to 11".

IS: No blow .

FF: Fair to strong blow . B.O.B. in 38 mins.

FS: No blow .

Pressure vs. Time



PRESSURE SUMMARY

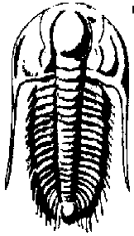
Time (Min.)	Pressure (psig)	Temp (deg F)	Annotation
0	1443.67	108.27	Initial Hydro-static
1	17.80	107.45	Open To Flow (1)
33	180.63	111.47	Shut-In(1)
61	1059.53	111.84	End Shut-In(1)
62	182.40	111.49	Open To Flow (2)
119	308.47	113.77	Shut-In(2)
181	1057.81	113.91	End Shut-In(2)
183	1426.00	113.57	Final Hydro-static

Recovery

Length (ft)	Description	Volume (bbl)
545.00	MW 5%m 95%w /Rw .23ohms @69deg	4.31
80.00	MW 25%m 75%w	1.12

Gas Rates

Choke (inches)	Pressure (psig)	Gas Rate (Mcf/d)



**TRILOBITE
TESTING, INC.**

DRILL STEM TEST REPORT

John O.Farmer Inc.

6-15s-12e Wabaunsee Ks

370 W.Wichita Ave.
P.O.Box 352
Russell Ks.67665
ATTN: Austin Klaus

Waugh C#1

Job Ticket: 49617

DST#: 1

Test Start: 2012.10.13 @ 15:01:38

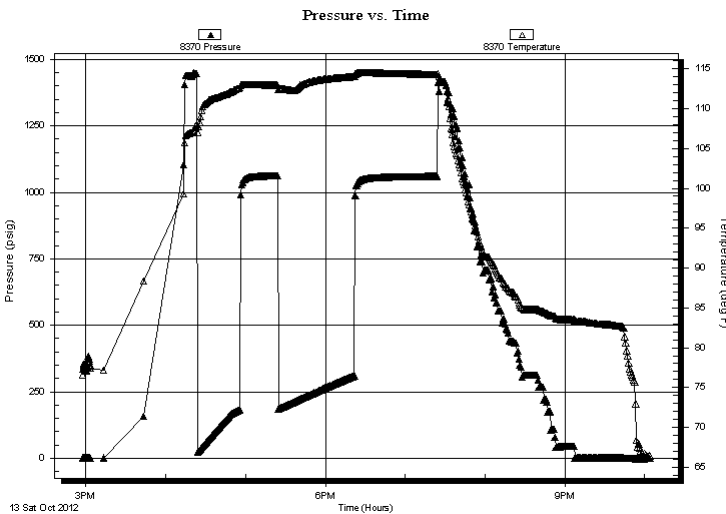
GENERAL INFORMATION:

Formation: **Simpson Dolo.**
 Deviated: No Whipstock: ft (KB)
 Test Type: Conventional Bottom Hole (Initial)
 Time Tool Opened: 16:24:53 Tester: Gary Pevoteaux
 Time Test Ended: 22:07:08 Unit No: 56
 Interval: **2993.00 ft (KB) To 3010.00 ft (KB) (TVD)** Reference Elevations: 1277.00 ft (KB)
 Total Depth: 3010.00 ft (KB) (TVD) 1269.00 ft (CF)
 Hole Diameter: 7.88 inches Hole Condition: Poor KB to GR/CF: 8.00 ft

Serial #: 8370

Press @ Run Depth: psig @ ft (KB) Capacity: 8000.00 psig
 Start Date: 2012.10.13 End Date: 2012.10.13 Last Calib.: 2012.10.13
 Start Time: 14:57:27 End Time: 22:03:36 Time On Btm:
 Time Off Btm:

TEST COMMENT: IF: Fair blow . Slow increase to 11".
 IS: No blow .
 FF: Fair to strong blow . B.O.B. in 38 mins.
 FS: No blow .



PRESSURE SUMMARY

Time (Min.)	Pressure (psig)	Temp (deg F)	Annotation

Recovery

Length (ft)	Description	Volume (bbl)
545.00	MW 5% m 95% w /Rw .23ohms @69deg	4.31
80.00	MW 25% m 75% w	1.12

Gas Rates

Choke (inches)	Pressure (psig)	Gas Rate (Mcf/d)



**TRILOBITE
TESTING, INC.**

DRILL STEM TEST REPORT

FLUID SUMMARY

John O.Farmer Inc.

6-15s-12e Wabaunsee Ks

370 W.Wichita Ave.
P.O.Box 352
Russell Ks.67665
ATTN: Austin Klaus

Waugh C#1

Job Ticket: 49617

DST#: 1

Test Start: 2012.10.13 @ 15:01:38

Mud and Cushion Information

Mud Type: Gel Chem

Cushion Type:

Oil API:

deg API

Mud Weight: 9.00 lb/gal

Cushion Length:

ft

Water Salinity:

29000 ppm

Viscosity: 50.00 sec/qt

Cushion Volume:

bbf

Water Loss: 9.39 in³

Gas Cushion Type:

Resistivity: 0.00 ohm.m

Gas Cushion Pressure:

psig

Salinity: 1000.00 ppm

Filter Cake: 0.20 inches

Recovery Information

Recovery Table

Length ft	Description	Volume bbf
545.00	MW 5% <i>m</i> 95% <i>w</i> / <i>Rw</i> .23ohms @69deg	4.311
80.00	MW 25% <i>m</i> 75% <i>w</i>	1.122

Total Length: 625.00 ft

Total Volume: 5.433 bbf

Num Fluid Samples: 0

Num Gas Bombs: 0

Serial #: none

Laboratory Name:

Laboratory Location:

Recovery Comments:

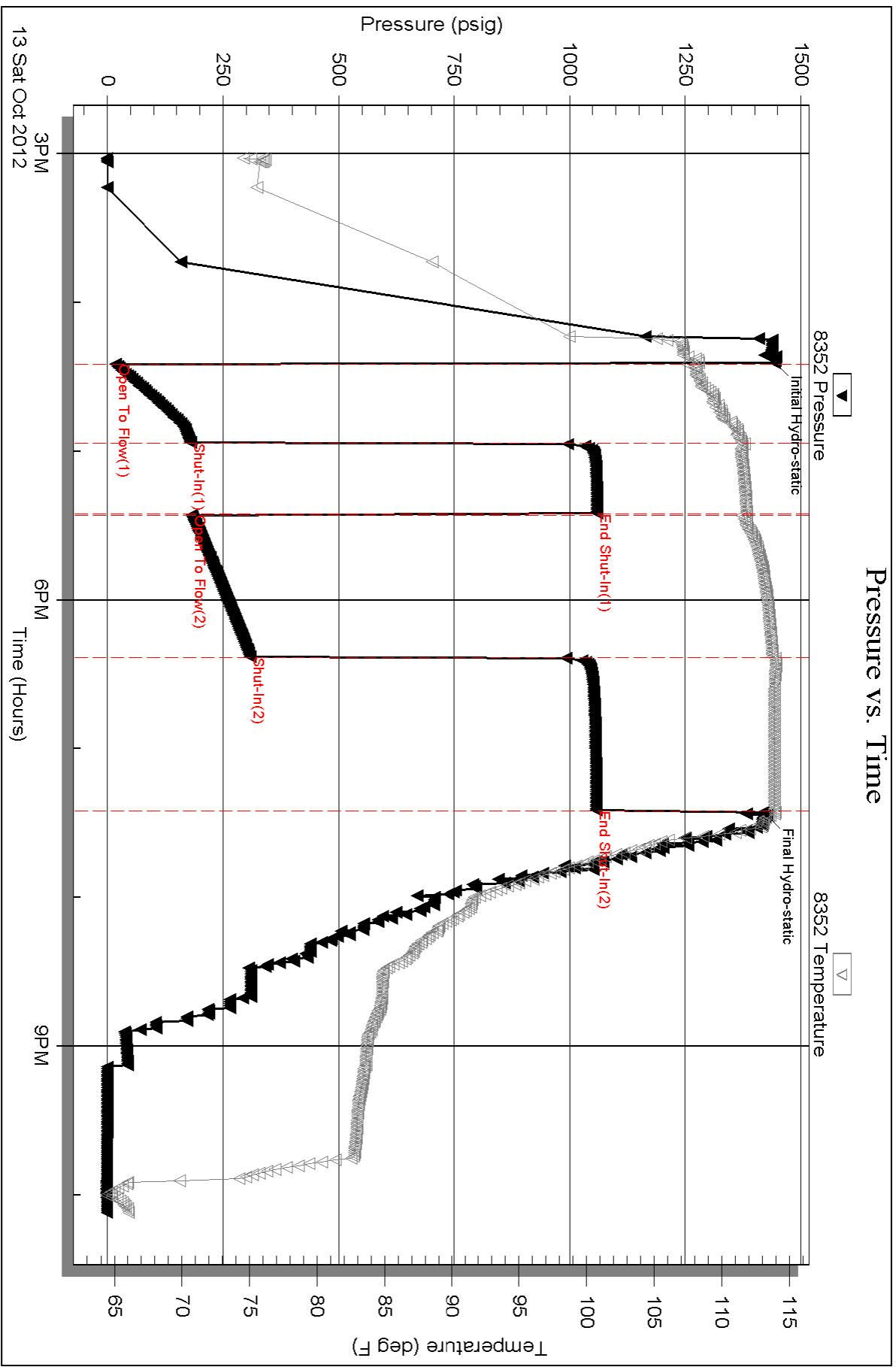
Serial #: 8352

Inside

John O Farmer Inc.

Maugh C#1

DST Test Number: 1



Triobite Testing, Inc

Ref. No: 49617

Printed: 2012.10.14 @ 17:24:40

