



**TRILOBITE  
TESTING, INC**

# DRILL STEM TEST REPORT

Shakespeare Oil Co. Inc.

**20-15s-33w Logan Co.**

202 West Main st  
Salem, IL 62881

**Zanobia #1-20**

Job Ticket: 51268

**DST#: 1**

ATTN: Tim Priest

Test Start: 2013.01.15 @ 23:28:00

## GENERAL INFORMATION:

Formation: " L " Zone

Deviated: No Whipstock: ft (KB)

Time Tool Opened: 02:04:45

Time Test Ended: 07:05:30

Test Type: Conventional Bottom Hole (Initial)

Tester: Sam Esparza

Unit No: 64

**Interval: 4147.00 ft (KB) To 4169.00 ft (KB) (TVD)**

Reference Elevations: 2889.00 ft (KB)

Total Depth: 4169.00 ft (KB) (TVD)

2879.00 ft (CF)

Hole Diameter: 7.88 inches Hole Condition: Good

KB to GR/CF: 10.00 ft

**Serial #: 8845 Outside**

Press @ Run Depth: 96.12 psig @ 4148.00 ft (KB)

Capacity: 8000.00 psig

Start Date: 2013.01.15

End Date: 2013.01.16

Last Calib.: 2013.01.16

Start Time: 23:28:05

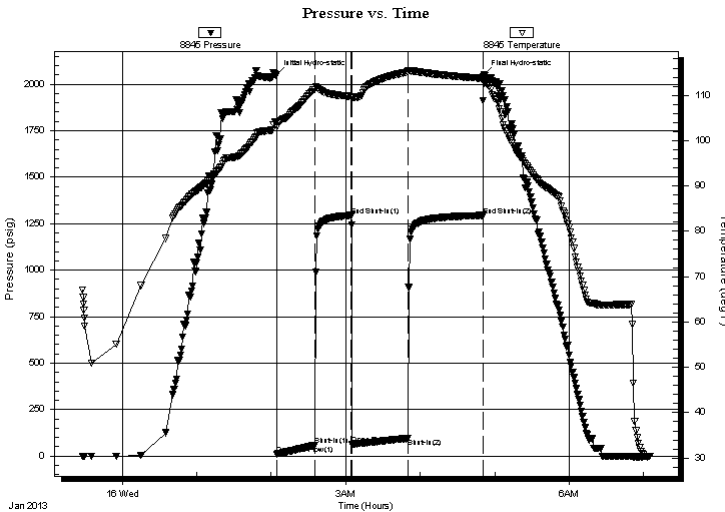
End Time: 07:05:29

Time On Btm: 2013.01.16 @ 02:04:30

Time Off Btm: 2013.01.16 @ 04:51:30

**TEST COMMENT:** IF: 4 1/2" blow .  
IS: No return.  
FF: 6 1/2" blow .  
FS: No return.

## PRESSURE SUMMARY



Time (Min.)	Pressure (psig)	Temp (deg F)	Annotation
0	2051.33	104.17	Initial Hydro-static
1	10.25	103.20	Open To Flow (1)
31	58.56	111.37	Shut-In(1)
60	1294.81	109.75	End Shut-In(1)
61	60.91	109.35	Open To Flow (2)
106	96.12	115.16	Shut-In(2)
166	1294.24	113.74	End Shut-In(2)
167	2049.97	113.02	Final Hydro-static

## Recovery

Length (ft)	Description	Volume (bbl)
120.00	MW 20m 80w	0.59
65.00	WM 30w 70m	0.91

## Gas Rates

	Choke (inches)	Pressure (psig)	Gas Rate (Mcf/d)



**TRILOBITE  
TESTING, INC**

# DRILL STEM TEST REPORT

**FLUID SUMMARY**

Shakespeare Oil Co. Inc.

**20-15s-33w Logan Co.**

202 West Main st  
Salem, IL 62881

**Zanobia #1-20**

Job Ticket: 51268

**DST#: 1**

ATTN: Tim Priest

Test Start: 2013.01.15 @ 23:28:00

## Mud and Cushion Information

Mud Type: Gel Chem

Cushion Type:

Oil API:

deg API

Mud Weight: 9.00 lb/gal

Cushion Length:

ft

Water Salinity:

ppm

Viscosity: 46.00 sec/qt

Cushion Volume:

bbbl

Water Loss: 6.40 in<sup>3</sup>

Gas Cushion Type:

Resistivity: 0.00 ohm.m

Gas Cushion Pressure:

psig

Salinity: 6200.00 ppm

Filter Cake: 1.00 inches

## Recovery Information

Recovery Table

Length ft	Description	Volume bbl
120.00	MW 20m 80w	0.590
65.00	WM 30w 70m	0.912

Total Length: 185.00 ft      Total Volume: 1.502 bbl

Num Fluid Samples: 0

Num Gas Bombs: 0

Serial #:

Laboratory Name:

Laboratory Location:

Recovery Comments: RW: .214 @ 34 degrees= 71,000 ppm

Serial #: 8845

Outside Shakespeare Oil Co. Inc.

Zanobia #1-20

DST Test Number: 1

### Pressure vs. Time

