



**TRILOBITE
TESTING, INC.**

DRILL STEM TEST REPORT

Shakespeare Oil Co. Inc.

20-15s-33w Logan,KS

202 West Main St
Salem, IL 62881

Zanobia #1-20

Job Ticket: 50033

DST#: 6

ATTN: Tim Priest

Test Start: 2013.01.22 @ 17:50:15

GENERAL INFORMATION:

Formation: **Marmaton**

Deviated: No Whipstock: 0.00 ft (KB)

Time Tool Opened: 19:33:55

Time Test Ended: 00:30:24

Test Type: Conventional Straddle (Reset)

Tester: Shane McBride

Unit No: 55

Interval: 4229.00 ft (KB) To 4244.00 ft (KB) (TVD)

Reference Elevations: 2889.00 ft (KB)

Total Depth: 4645.00 ft (KB) (TVD)

2879.00 ft (CF)

Hole Diameter: 7.88 inches Hole Condition: Fair

KB to GR/CF: 10.00 ft

Serial #: 8368 Outside

Press @ Run Depth: 811.78 psig @ 4230.00 ft (KB)

Capacity: 8000.00 psig

Start Date: 2013.01.22

End Date: 2013.01.23

Last Calib.: 2013.01.23

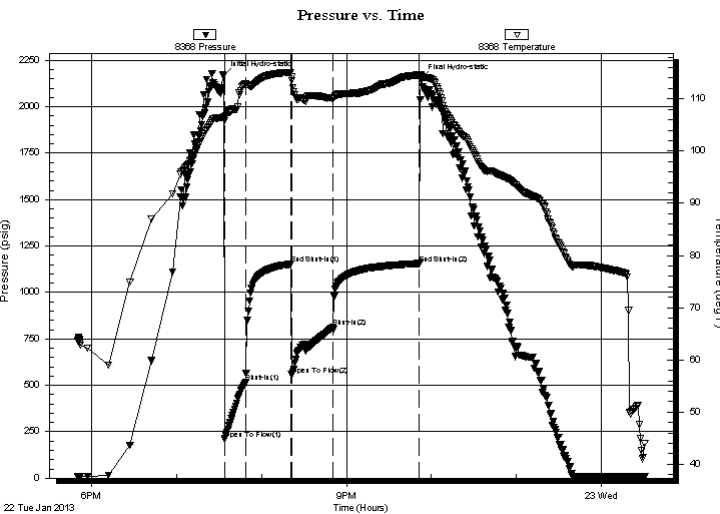
Start Time: 17:50:15

End Time: 00:30:24

Time On Btm: 2013.01.22 @ 19:33:25

Time Off Btm: 2013.01.22 @ 21:52:40

TEST COMMENT: B.O.B. in 1 min.
No return
B.O.B. in 3 min.
No return



PRESSURE SUMMARY

Time (Min.)	Pressure (psig)	Temp (deg F)	Annotation
0	2168.08	106.47	Initial Hydro-static
1	208.74	105.87	Open To Flow (1)
16	514.92	112.84	Shut-In(1)
48	1153.56	115.08	End Shut-In(1)
48	557.27	114.22	Open To Flow (2)
77	811.78	110.15	Shut-In(2)
138	1156.13	114.61	End Shut-In(2)
140	2153.93	114.38	Final Hydro-static

Recovery

Length (ft)	Description	Volume (bbl)
360.00	s m c w 5m95w	3.96
300.00	m c w 30m 70w	4.21
840.00	w c m 35w 65m	11.78

Gas Rates

	Choke (inches)	Pressure (psig)	Gas Rate (Mcf/d)

* Recovery from multiple tests



**TRILOBITE
TESTING, INC.**

DRILL STEM TEST REPORT

FLUID SUMMARY

Shakespeare Oil Co. Inc.

20-15s-33w Logan,KS

202 West Main St
Salem, IL 62881

Zanobia #1-20

Job Ticket: 50033

DST#: 6

ATTN: Tim Priest

Test Start: 2013.01.22 @ 17:50:15

Mud and Cushion Information

Mud Type: Gel Chem

Cushion Type:

Oil API:

0 deg API

Mud Weight: 9.00 lb/gal

Cushion Length:

ft

Water Salinity:

58000 ppm

Viscosity: 55.00 sec/qt

Cushion Volume:

bbbl

Water Loss: 7.98 in³

Gas Cushion Type:

Resistivity: 0.00 ohm.m

Gas Cushion Pressure:

psig

Salinity: 10000.00 ppm

Filter Cake: 1.00 inches

Recovery Information

Recovery Table

Length ft	Description	Volume bbbl
360.00	s m c w 5m 95w	3.957
300.00	m c w 30m 70w	4.208
840.00	w c m 35w 65m	11.783

Total Length: 1500.00 ft Total Volume: 19.948 bbl

Num Fluid Samples: 0

Num Gas Bombs: 0

Serial #:

Laboratory Name:

Laboratory Location:

Recovery Comments: rw .278 @ 45*f= 58,000 chlor

Pressure vs. Time

