



**TRILOBITE  
TESTING, INC**

# DRILL STEM TEST REPORT

Strata Exploration Inc.

**10-27s-18w Kiowa Ks.**

P.O.Box 401  
Fairfield Il.62837

**Hamblin Trust#1-10**

ATTN: Jon Christensen

Job Ticket: 50827

**DST#: 1**

Test Start: 2013.01.03 @ 02:36:15

## GENERAL INFORMATION:

Formation: **Miss.**

Deviated: No Whipstock: ft (KB)

Time Tool Opened: 05:29:30

Time Test Ended: 11:46:00

Test Type: Conventional Bottom Hole (Initial)

Tester: Gary Pevoteaux

Unit No: 56

**Interval: 4680.00 ft (KB) To 4725.00 ft (KB) (TVD)**

Total Depth: 4725.00 ft (KB) (TVD)

Hole Diameter: 7.88 inches Hole Condition: Poor

Reference Elevations: 2179.00 ft (KB)

2168.00 ft (CF)

KB to GR/CF: 11.00 ft

**Serial #: 8352 Outside**

Press @RunDepth: 28.35 psig @ 4681.00 ft (KB)

Start Date: 2013.01.03

End Date: 2013.01.03

Start Time: 02:36:20

End Time: 11:46:00

Capacity: 8000.00 psig

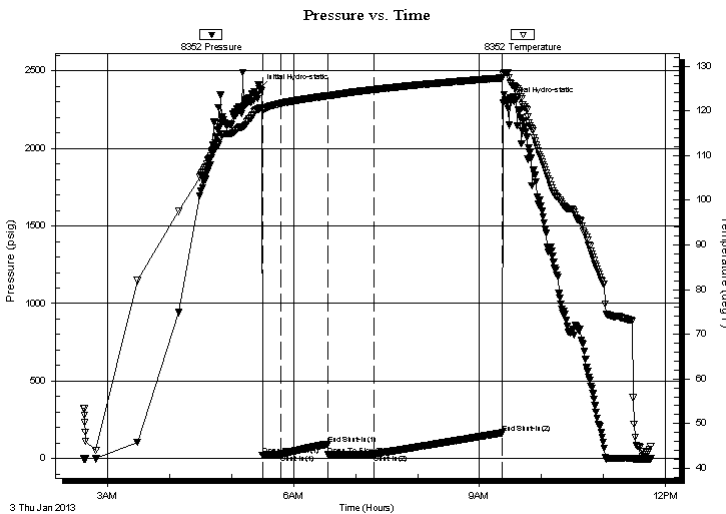
Last Calib.: 2013.01.03

Time On Btm: 2013.01.03 @ 05:26:45

Time Off Btm: 2013.01.03 @ 09:25:15

**TEST COMMENT:** IF:Weak blow . 2 - 4 1/2".  
IS:No blow .  
FF:Weak to fair blow . 2 - 5".  
FS:No blow .

## PRESSURE SUMMARY



Time (Min.)	Pressure (psig)	Temp (deg F)	Annotation
0	2384.89	120.53	Initial Hydro-static
3	19.70	120.11	Open To Flow (1)
21	25.20	121.63	Shut-In(1)
66	92.73	123.35	End Shut-In(1)
67	23.52	123.31	Open To Flow (2)
111	28.35	124.75	Shut-In(2)
236	165.76	127.37	End Shut-In(2)
239	2300.78	128.58	Final Hydro-static

## Recovery

Length (ft)	Description	Volume (bbl)
15.00	Drig.mud	0.07
0.00	185 ft.of GIP	0.00

## Gas Rates

Choke (inches)	Pressure (psig)	Gas Rate (Mcf/d)



**TRILOBITE  
TESTING, INC**

# DRILL STEM TEST REPORT

**FLUID SUMMARY**

Strata Exploration Inc.

**10-27s-18w Kiowa Ks.**

P.O.Box 401  
Fairfield Il.62837

**Hamblin Trust#1-10**

Job Ticket: 50827

**DST#: 1**

ATTN: Jon Christensen

Test Start: 2013.01.03 @ 02:36:15

## Mud and Cushion Information

Mud Type: Gel Chem

Cushion Type:

Oil API:

deg API

Mud Weight: 9.00 lb/gal

Cushion Length:

ft

Water Salinity:

7000 ppm

Viscosity: 60.00 sec/qt

Cushion Volume:

bbbl

Water Loss: 9.19 in<sup>3</sup>

Gas Cushion Type:

Resistivity: 0.00 ohm.m

Gas Cushion Pressure:

psig

Salinity: 7000.00 ppm

Filter Cake: 0.20 inches

## Recovery Information

Recovery Table

Length ft	Description	Volume bbl
15.00	Drig.mud	0.074
0.00	185 ft.of GIP	0.000

Total Length: 15.00 ft      Total Volume: 0.074 bbl

Num Fluid Samples: 0

Num Gas Bombs: 0

Serial #: none

Laboratory Name:

Laboratory Location:

Recovery Comments:

