



DRILL STEM TEST REPORT

Prepared For: **Zenergy Operating Company L.L.C.**

6100 South Yale Avenue Suite 1700
Tulsa ,Oklahoma 74136

ATTN: Harvey Moore

Jost #1 SWD

30-19s-2w Marion

Start Date: 2013.01.09 @ 00:00:00

End Date: 2013.01.09 @ 00:00:00

Job Ticket #: 17774 DST #: 1

Superior Testers Enterprises LLC
PO Box 138 Great Bend KS 67530
1-800-792-6902

Printed: 2013.01.09 @ 09:59:56



DRILL STEM TEST REPORT

Zenergy Operating Company L.L.C.

30-19s-2w Marion

6100 South Yale Avenue Suite 1700
Tulsa ,Oklahoma 74136

Jost #1 SWD

Job Ticket: 17774

DST#: 1

ATTN: Harvey Moore

Test Start: 2013.01.09 @ 00:00:00

GENERAL INFORMATION:

Formation: **Simpson**

Deviated: No Whipstock: ft (KB)

Time Tool Opened: 00:00:00

Time Test Ended: 00:00:00

Test Type: Conventional Straddle (Initial)

Tester: Gene Budig

Unit No: 3335

Interval: 3241.00 ft (KB) To 3313.00 ft (KB) (TVD)

Reference Elevations: 1452.00 ft (KB)

Total Depth: 3385.00 ft (KB) (TVD)

1440.00 ft (CF)

Hole Diameter: 8.75 inches Hole Condition: Fair

KB to GR/CF: 12.00 ft

Serial #: 6806 Outside

Press @ RunDepth: 1195.66 psia @ 3385.63 ft (KB)

Capacity: 5000.00 psia

Start Date: 2013.01.08

End Date: 2013.01.08

Last Calib.: 2013.01.09

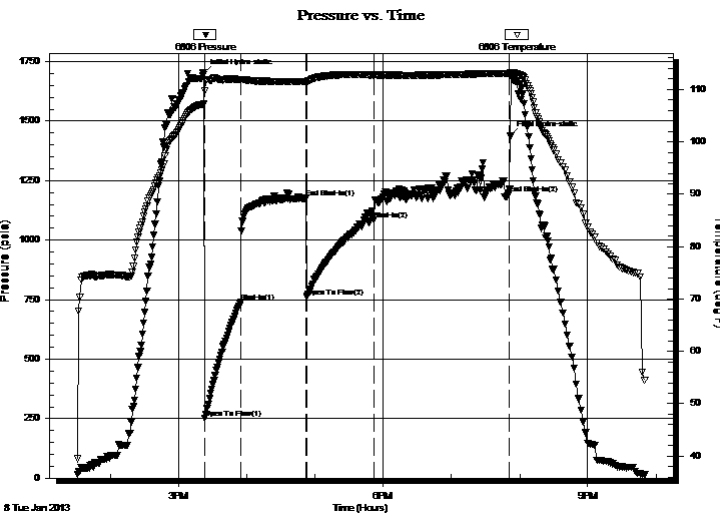
Start Time: 09:30:00

End Time: 21:50:00

Time On Btm: 2013.01.08 @ 15:21:30

Time Off Btm: 2013.01.08 @ 19:52:00

TEST COMMENT: 1st Opening 30 Minutes-Good blow built to the bottom of a 5 gallon bucket in 1 minute
1st Shut-In 60 Minutes-No blow back
2nd Opening 60 Minutes-Good blow built to the bottom of a 5 gallon bucket in 2 minutes
2nd Shut-In 120 Minutes-No blow back



PRESSURE SUMMARY

Time (Min.)	Pressure (psia)	Temp (deg F)	Annotation
0	1701.35	107.16	Initial Hydro-static
2	251.07	109.68	Open To Flow (1)
33	740.86	111.85	Shut-In(1)
91	1175.92	111.56	End Shut-In(1)
91	761.79	111.47	Open To Flow (2)
151	1085.85	112.76	Shut-In(2)
269	1195.66	113.04	End Shut-In(2)
271	1437.05	113.12	Final Hydro-static

Recovery

Length (ft)	Description	Volume (bbl)
280.00	Mud 90%Mud 10%Water	1.92
280.00	Mud 85%Mud 15%Water	2.07
280.00	Water Mud 80%Mud 20%Water	2.07
280.00	Muddy Water 60%Mud 40%Water	2.07
372.00	Muddy Water25%Mud 75%Water	2.75
372.00	Slightly muddy w ater 15%Mud 85%Water	2.75

Gas Rates

Choke (inches)	Pressure (psia)	Gas Rate (Mcf/d)



DRILL STEM TEST REPORT

Zenergy Operating Company L.L.C.

30-19s-2w Marion

6100 South Yale Avenue Suite 1700
Tulsa ,Oklahoma 74136

Jost #1 SWD

Job Ticket: 17774

DST#: 1

ATTN: Harvey Moore

Test Start: 2013.01.09 @ 00:00:00

GENERAL INFORMATION:

Formation: **Simpson**

Deviated: No Whipstock: ft (KB)

Time Tool Opened: 00:00:00

Time Test Ended: 00:00:00

Test Type: Conventional Straddle (Initial)

Tester: Gene Budig

Unit No: 3335

Interval: 3241.00 ft (KB) To 3313.00 ft (KB) (TVD)

Reference Elevations: 1452.00 ft (KB)

Total Depth: 3385.00 ft (KB) (TVD)

1440.00 ft (CF)

Hole Diameter: 8.75 inches Hole Condition: Fair

KB to GR/CF: 12.00 ft

Serial #: 8624 Inside

Press @ RunDepth: 1054.50 psia @ 3311.50 ft (KB)

Capacity: 5000.00 psia

Start Date: 2013.01.08

End Date: 2013.01.08

Last Calib.: 2013.01.09

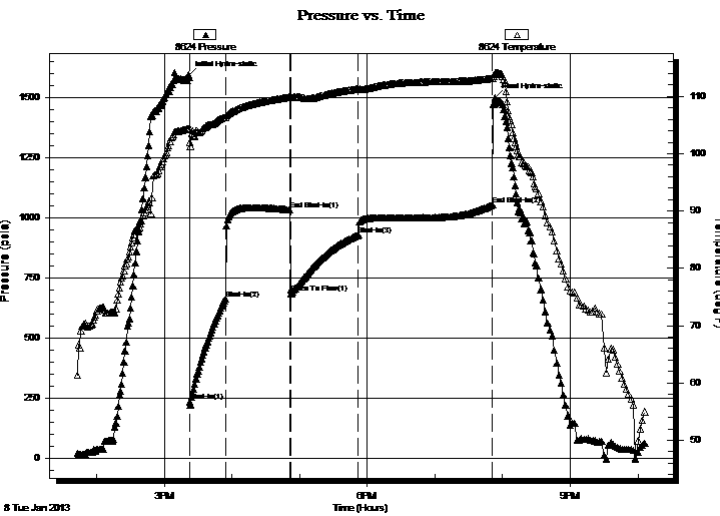
Start Time: 09:30:00

End Time: 22:07:00

Time On Btm: 2013.01.08 @ 15:21:30

Time Off Btm: 2013.01.08 @ 19:53:30

TEST COMMENT: 1st Opening 30 Minutes-Good blow built to the bottom of a 5 gallon bucket in 1 minute
1st Shut-In 60 Minutes-No blow back
2nd Opening 60 Minutes-Good blow built to the bottom of a 5 gallon bucket in 2 minutes
2nd Shut-In 120 Minutes-No blow back



PRESSURE SUMMARY

Time (Min.)	Pressure (psia)	Temp (deg F)	Annotation
0	1591.82	104.39	Initial Hydro-static
1	237.03	102.02	Shut-In(1)
33	664.28	106.40	Shut-In(2)
90	1035.05	109.89	End Shut-In(1)
91	686.93	109.76	Open To Flow (1)
151	929.30	111.32	Shut-In(3)
270	1054.50	113.11	End Shut-In(2)
272	1500.07	114.07	Final Hydro-static

Recovery

Length (ft)	Description	Volume (bbl)
280.00	Mud 90%Mud 10%Water	1.92
280.00	Mud 85%Mud 15%Water	2.07
280.00	Water Mud 80%Mud 20%Water	2.07
280.00	Muddy Water 60%Mud 40%Water	2.07
372.00	Muddy Water25%Mud 75%Water	2.75
372.00	Slightly muddy w ater 15%Mud 85%Water	2.75

Gas Rates

Choke (inches)	Pressure (psia)	Gas Rate (Mcf/d)



DRILL STEM TEST REPORT

Zenergy Operating Company L.L.C.

30-19s-2w Marion

6100 South Yale Avenue Suite 1700
Tulsa ,Oklahoma 74136

Jost #1 SWD

Job Ticket: 17774

DST#: 1

ATTN: Harvey Moore

Test Start: 2013.01.09 @ 00:00:00

GENERAL INFORMATION:

Formation: **Simpson**

Deviated: No Whipstock: ft (KB)

Time Tool Opened: 00:00:00

Time Test Ended: 00:00:00

Test Type: Conventional Straddle (Initial)

Tester: Gene Budig

Unit No: 3335

Interval: 3241.00 ft (KB) To 3313.00 ft (KB) (TVD)

Reference Elevations: 1452.00 ft (KB)

Total Depth: 3385.00 ft (KB) (TVD)

1440.00 ft (CF)

Hole Diameter: 8.75 inches Hole Condition: Fair

KB to GR/CF: 12.00 ft

Serial #: 6663 Outside

Press @ RunDepth: 1140.34 psia @ 3312.50 ft (KB)

Capacity: 5000.00 psia

Start Date: 2013.01.08

End Date: 2013.01.08

Last Calib.: 2013.01.09

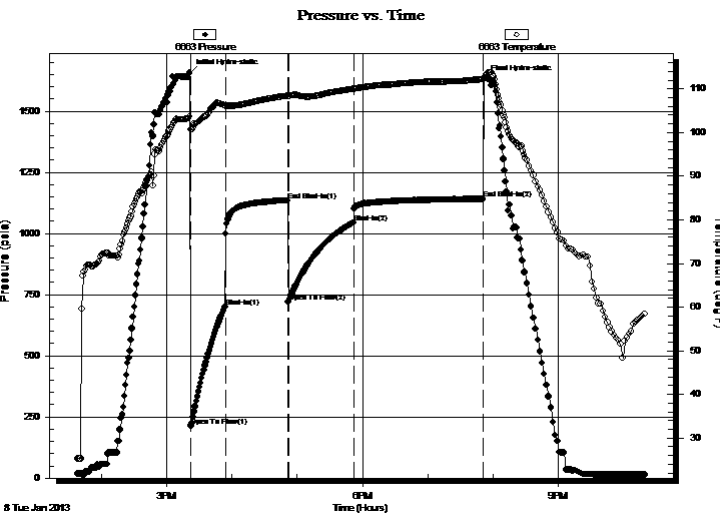
Start Time: 09:30:00

End Time: 22:19:00

Time On Btm: 2013.01.08 @ 15:21:30

Time Off Btm: 2013.01.08 @ 19:51:30

TEST COMMENT: 1st Opening 30 Minutes-Good blow built to the bottom of a 5 gallon bucket in 1 minute
1st Shut-In 60 Minutes-No blow back
2nd Opening 60 Minutes-Good blow built to the bottom of a 5 gallon bucket in 2 minutes
2nd Shut-In 120 Minutes-No blow back



PRESSURE SUMMARY

Time (Min.)	Pressure (psia)	Temp (deg F)	Annotation
0	1655.49	103.58	Initial Hydro-static
1	214.08	100.72	Open To Flow (1)
33	700.38	106.03	Shut-In(1)
90	1135.09	108.39	End Shut-In(1)
91	720.43	108.31	Open To Flow (2)
151	1044.14	109.94	Shut-In(2)
269	1140.34	112.12	End Shut-In(2)
270	1631.47	112.45	Final Hydro-static

Recovery

Length (ft)	Description	Volume (bbl)
280.00	Mud 90%Mud 10%Water	1.92
280.00	Mud 85%Mud 15%Water	2.07
280.00	Water Mud 80%Mud 20%Water	2.07
280.00	Muddy Water 60%Mud 40%Water	2.07
372.00	Muddy Water25%Mud 75%Water	2.75
372.00	Slightly muddy w ater 15%Mud 85%Water	2.75

Gas Rates

Choke (inches)	Pressure (psia)	Gas Rate (Mcf/d)



DRILL STEM TEST REPORT

TOOL DIAGRAM

Zenergy Operating Company L.L.C.

30-19s-2w Marion

6100 South Yale Avenue Suite 1700
Tulsa ,Oklahoma 74136

Jost #1 SWD

Job Ticket: 17774

DST#: 1

ATTN: Harvey Moore

Test Start: 2013.01.09 @ 00:00:00

Tool Information

Drill Pipe:	Length: 3156.00 ft	Diameter: 2.76 inches	Volume: 23.35 bbl	Tool Weight: 2000.00 lb
Heavy Wt. Pipe:	Length: 0.00 ft	Diameter: 2.60 inches	Volume: 0.00 bbl	Weight set on Packer: 20000.00 lb
Drill Collar:	Length: 63.00 ft	Diameter: 2.25 inches	Volume: 0.31 bbl	Weight to Pull Loose: 65000.00 lb
			Total Volume: 23.66 bbl	Tool Chased 0.00 ft
Drill Pipe Above KB:	7.00 ft			String Weight: Initial 48000.00 lb
Depth to Top Packer:	3241.00 ft			Final 54000.00 lb
Depth to Bottom Packer:	3313.25 ft			
Interval between Packers:	72.25 ft			
Tool Length:	177.63 ft			
Number of Packers:	3	Diameter: 7.50 inches		
Tool Comments:				

Tool Description	Length (ft)	Serial No.	Position	Depth (ft)	Accum. Lengths
Change Over Sub	1.00			3213.00	
Shut-In Tool	5.00			3218.00	
Hydroic Tool	5.00			3223.00	
Jars	6.00			3229.00	
Safety Joint	2.00			3231.00	
Top Packer	5.00			3236.00	
Packer	5.00			3241.00	29.00 Bottom Of Top Packer
Perforations	5.00			3246.00	
Change Over Sub	0.75			3246.75	
Drill Pipe	31.00			3277.75	
Change Over Sub	0.75			3278.50	
Perforations	32.00			3310.50	
Recorder	1.00	8624	Inside	3311.50	
Recorder	1.00	6663	Outside	3312.50	
Blank Off Sub	0.75			3313.25	72.25 Tool Interval
Packer	5.00			3318.25	
C.O. Sub	0.75			3319.00	
Drill Pipe	61.88			3380.88	
C.O. Sub	0.75			3381.63	
Anchor	3.00			3384.63	
Recorder	1.00	6806	Outside	3385.63	
Bullnose	4.00			3389.63	76.38 Bottom Packers & Anchor

Total Tool Length: 177.63



DRILL STEM TEST REPORT

FLUID SUMMARY

Zenergy Operating Company L.L.C.

30-19s-2w Marion

6100 South Yale Avenue Suite 1700
Tulsa ,Oklahoma 74136

Jost #1 SWD

Job Ticket: 17774

DST#: 1

ATTN: Harvey Moore

Test Start: 2013.01.09 @ 00:00:00

Mud and Cushion Information

Mud Type: Gel Chem
Mud Weight: 10.00 lb/gal
Viscosity: 54.00 sec/qt
Water Loss: 8.99 in³
Resistivity: ohm.m
Salinity: 1100.00 ppm
Filter Cake: 1.00 inches

Cushion Type:
Cushion Length: ft
Cushion Volume: bbl
Gas Cushion Type:
Gas Cushion Pressure: psia

Oil API: deg API
Water Salinity: ppm

Recovery Information

Recovery Table

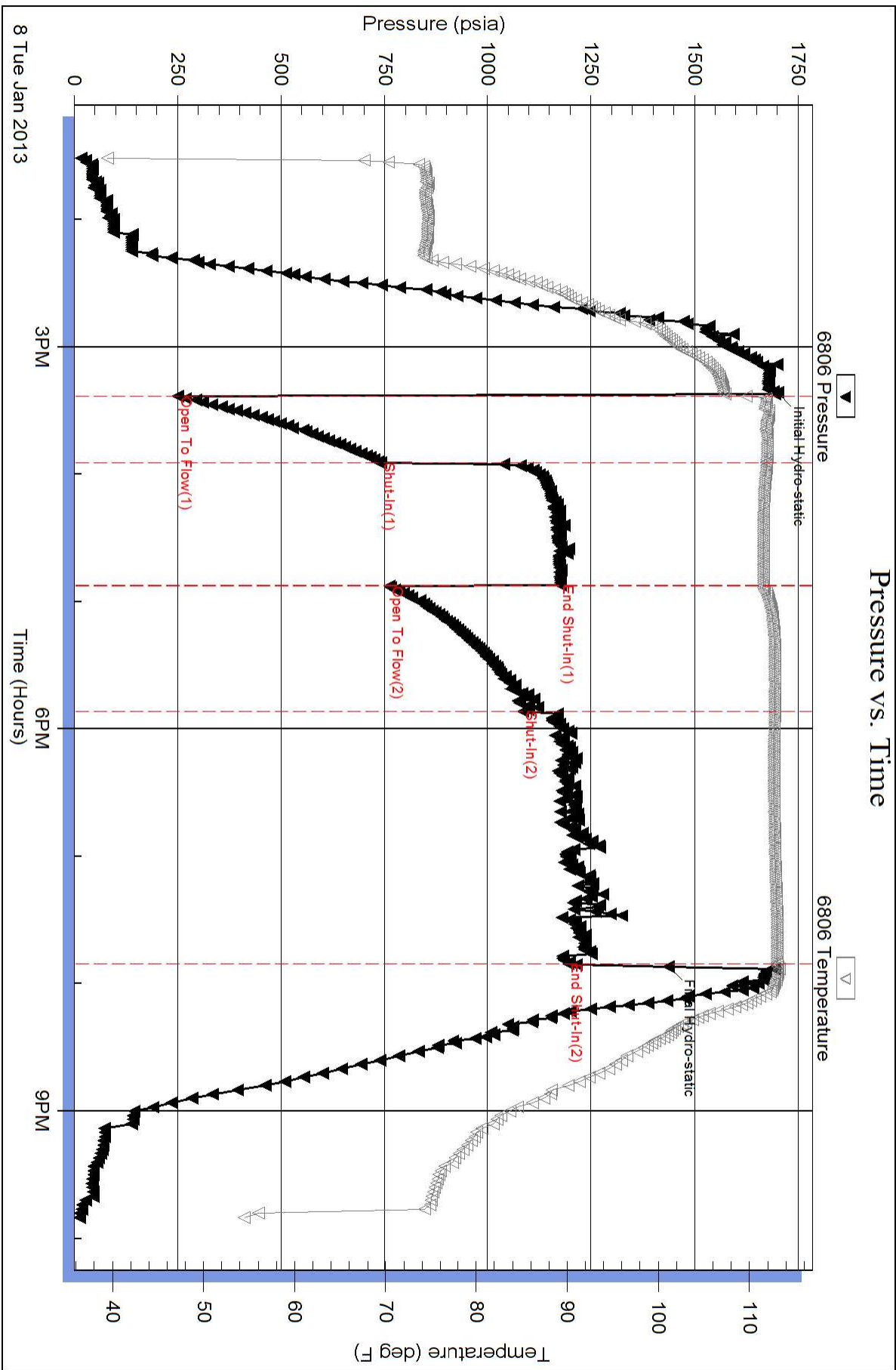
Length ft	Description	Volume bbl
280.00	Mud 90%Mud 10%Water	1.916
280.00	Mud 85%Mud 15%Water	2.072
280.00	Water Mud 80%Mud 20%Water	2.072
280.00	Muddy Water 60%Mud 40%Water	2.072
372.00	Muddy Water25%Mud 75%Water	2.753
372.00	Slightly muddy w ater 15%Mud 85%Water	2.753
372.00	Slightly muddy w ater 5%Mud 95%Water	2.753
0.00	Chlorides 8,500	0.000

Total Length: 2236.00 ft Total Volume: 16.391 bbl

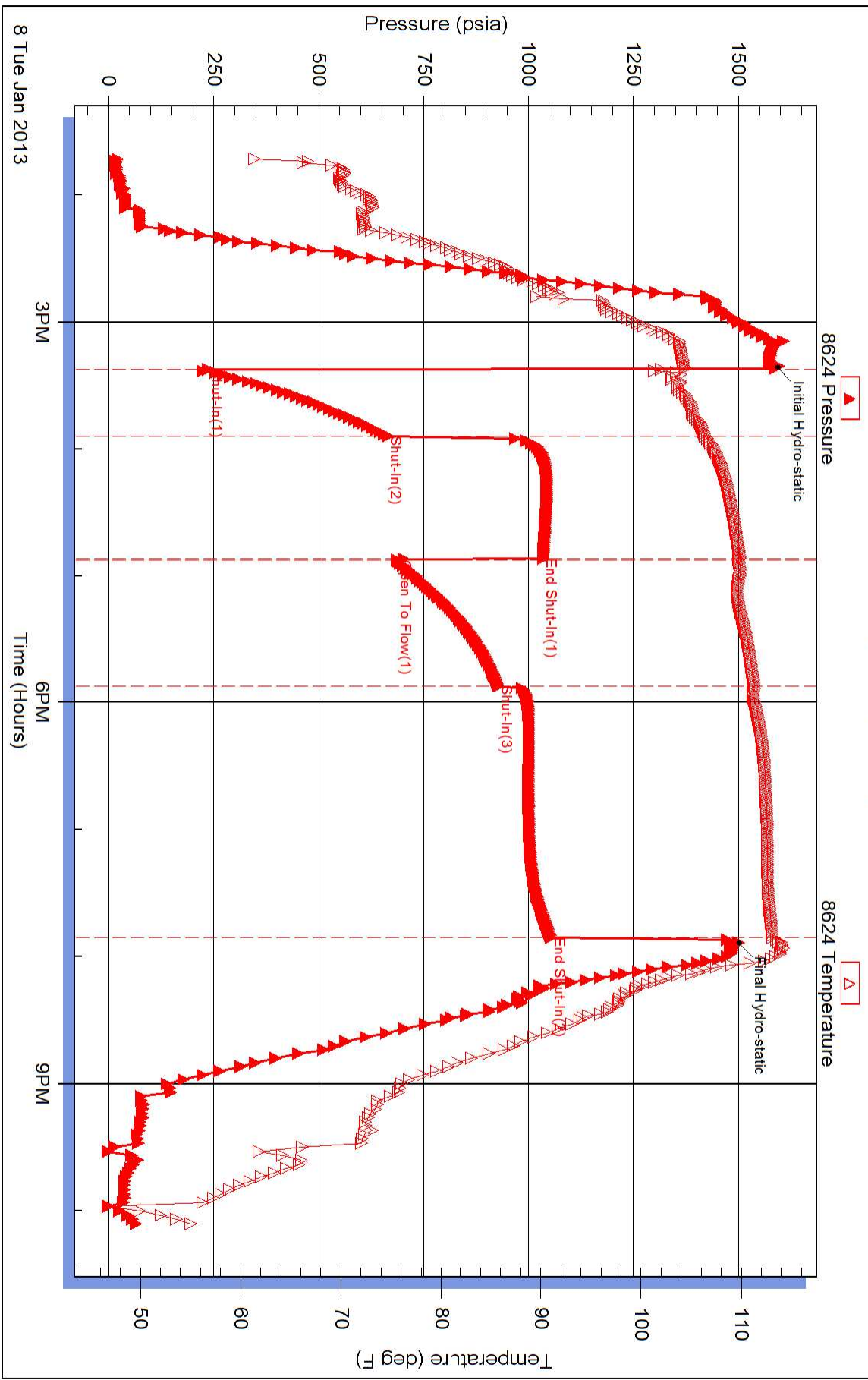
Num Fluid Samples: 0 Num Gas Bombs: 0 Serial #:

Laboratory Name: Laboratory Location:

Recovery Comments:



Pressure vs. Time



Pressure vs. Time

