



## DRILL STEM TEST REPORT

Prepared For: **Shelby Resources**

2717 Canal Blvd. Hays Kansas 67601

ATTN: Keith Reavis

### **Prosser 1-36**

### **36-21s-16w-Pawnee**

Start Date: 2012.11.22 @ 08:43:00

End Date: 2012.11.22 @ 17:59:53

Job Ticket #: 17870                      DST #: 1

Superior Testers Enterprises LLC  
PO Box 138 Great Bend KS 67530  
1-800-792-6902

Printed: 2012.11.23 @ 05:14:04



# DRILL STEM TEST REPORT

Shelby Resources  
 2717 Canal Blvd. Hays Kansas 67601  
 ATTN: Keith Reavis

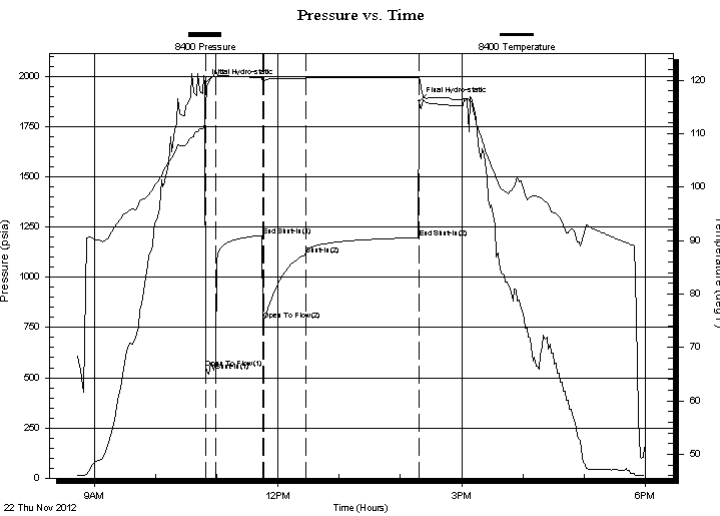
**36-21s-16w-Pawnee**  
**Prosser 1-36**  
 Job Ticket: 17870      **DST#: 1**  
 Test Start: 2012.11.22 @ 08:43:00

## GENERAL INFORMATION:

Formation: **Simpson sand**  
 Deviated: No Whipstock: ft (KB)  
 Time Tool Opened: 10:48:53  
 Time Test Ended: 17:59:53  
**Interval: 3712.00 ft (KB) To 3868.00 ft (KB) (TVD)**  
 Total Depth: 3868.00 ft (KB) (TVD)  
 Hole Diameter: 7.88 inches Hole Condition: Fair  
 Test Type: Conventional Bottom Hole (Initial)  
 Tester: Dustin Ellis  
 Unit No: 3315-Great Bend-58  
 Reference Elevations: 1987.00 ft (KB)  
 1977.00 ft (CF)  
 KB to GR/CF: 10.00 ft

**Serial #: 8400      Outside**  
 Press @ Run Depth: 1113.76 psia @ 3865.91 ft (KB)      Capacity: 5000.00 psia  
 Start Date: 2012.11.22      End Date: 2012.11.22      Last Calib.: 2012.11.23  
 Start Time: 08:43:23      End Time: 17:59:53      Time On Btm: 2012.11.22 @ 10:48:23  
    Time Off Btm: 2012.11.22 @ 14:18:23

**TEST COMMENT:** 1st Open 10 minutes Strong blow blew bottom bucket 1 minute.  
 1st Shut in 45 minutes No blow back  
 2nd Open 45 minutes Strong blow blew bottom bucket 1 minute.  
 2nd Shut in 90 minutes No blow back



PRESSURE SUMMARY			
Time (Min.)	Pressure (psia)	Temp (deg F)	Annotation
0	1964.74	111.86	Initial Hydro-static
1	550.47	114.74	Open To Flow (1)
11	578.22	121.27	Shut-In(1)
56	1208.26	120.49	End Shut-In(1)
57	785.76	119.67	Open To Flow (2)
99	1113.76	120.32	Shut-In(2)
210	1197.93	120.46	End Shut-In(2)
210	1876.63	120.56	Final Hydro-static

Recovery		
Length (ft)	Description	Volume (bbl)
671.00	Mud cut oil 3% Oil 97%Mud	6.36
610.00	Mud cut gassy oil	8.56
0.00	75% Mud 20% Gas 5% Oil	0.00
608.00	Oil plus gas cut muddy w water	8.53
0.00	Mud 5% Water30% Gas55% Oil5%	0.00
0.00	Chlorides 46,000 67degrees	0.00

Gas Rates			
	Choke (inches)	Pressure (psia)	Gas Rate (Mcf/d)



# DRILL STEM TEST REPORT

Shelby Resources  
 2717 Canal Blvd. Hays Kansas 67601  
 ATTN: Keith Reavis

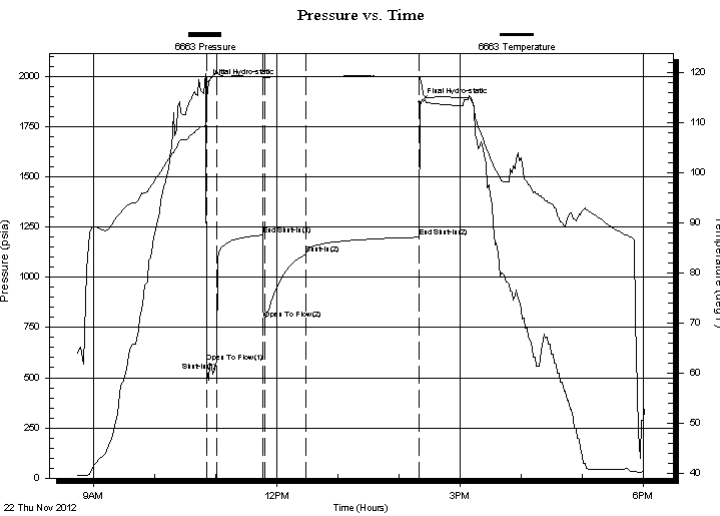
**36-21s-16w-Pawnee**  
**Prosser 1-36**  
 Job Ticket: 17870 **DST#: 1**  
 Test Start: 2012.11.22 @ 08:43:00

## GENERAL INFORMATION:

Formation: **Simpson sand**  
 Deviated: No Whipstock: ft (KB)  
 Time Tool Opened: 10:48:53  
 Time Test Ended: 17:59:53  
 Interval: **3712.00 ft (KB) To 3868.00 ft (KB) (TVD)**  
 Total Depth: 3868.00 ft (KB) (TVD)  
 Hole Diameter: 7.88 inches Hole Condition: Fair  
 Test Type: Conventional Bottom Hole (Initial)  
 Tester: Dustin Ellis  
 Unit No: 3315-Great Bend-58  
 Reference Elevations: 1987.00 ft (KB)  
 1977.00 ft (CF)  
 KB to GR/CF: 10.00 ft

**Serial #: 6663 Inside**  
 Press @ Run Depth: 1199.29 psia @ 3864.91 ft (KB) Capacity: 5000.00 psia  
 Start Date: 2012.11.22 End Date: 2012.11.22 Last Calib.: 2012.11.23  
 Start Time: 08:44:00 End Time: 18:01:30 Time On Btm: 2012.11.22 @ 10:50:00  
 Time Off Btm: 2012.11.22 @ 14:20:30

**TEST COMMENT:** 1st Open 10 minutes Strong blow blew bottom bucket 1 minute.  
 1st Shut in 45 minutes No blow back  
 2nd Open 45 minutes Strong blow blew bottom bucket 1 minute.  
 2nd Shut in 90 minutes No blow back



## PRESSURE SUMMARY

Time (Min.)	Pressure (psia)	Temp (deg F)	Annotation
0	1964.93	110.04	Initial Hydro-static
1	579.24	110.17	Open To Flow (1)
11	575.88	119.87	Shut-In(1)
56	1209.58	119.15	End Shut-In(1)
58	790.82	118.72	Open To Flow (2)
99	1114.31	119.12	Shut-In(2)
210	1199.29	119.19	End Shut-In(2)
211	1870.06	119.01	Final Hydro-static

## Recovery

Length (ft)	Description	Volume (bbl)
671.00	Mud cut oil 3% Oil 97%Mud	6.36
610.00	Mud cut gassy oil	8.56
0.00	75% Mud 20% Gas 5% Oil	0.00
608.00	Oil plus gas cut muddy w water	8.53
0.00	Mud 5% Water30% Gas55% Oil5%	0.00
0.00	Chlorides 46,000 67degrees	0.00

## Gas Rates

	Choke (inches)	Pressure (psia)	Gas Rate (Mcf/d)



# DRILL STEM TEST REPORT

**TOOL DIAGRAM**

Shelby Resources  
 2717 Canal Blvd. Hays Kansas 67601  
 ATTN: Keith Reavis

**36-21s-16w-Pawnee**  
**Prosser 1-36**  
 Job Ticket: 17870      **DST#: 1**  
 Test Start: 2012.11.22 @ 08:43:00

**Tool Information**

Drill Pipe:	Length: 3482.00 ft	Diameter: 3.80 inches	Volume: 48.84 bbl	Tool Weight:	2000.00 lb
Heavy Wt. Pipe:	Length: 0.00 ft	Diameter: 0.00 inches	Volume: 0.00 bbl	Weight set on Packer:	20000.00 lb
Drill Collar:	Length: 217.63 ft	Diameter: 0.00 inches	Volume: 0.00 bbl	Weight to Pull Loose:	75000.00 lb
			<u>Total Volume: 48.84 bbl</u>	Tool Chased	0.00 ft
Drill Pipe Above KB:	7.63 ft			String Weight: Initial	69000.00 lb
Depth to Top Packer:	3712.00 ft			Final	79000.00 lb
Depth to Bottom Packer:	ft				
Interval between Packers:	156.91 ft				
Tool Length:	176.91 ft				
Number of Packers:	2	Diameter: 6.75 inches			
Tool Comments:					

Tool Description	Length (ft)	Serial No.	Position	Depth (ft)	Accum. Lengths
Shut-In Tool	5.00			3697.00	
Hydraulic Tool	5.00			3702.00	
Packer	5.00			3707.00	20.00      Bottom Of Top Packer
Packer	5.00			3712.00	
Anchor	5.00			3717.00	
Change Over Sub	0.75			3717.75	
Drill Pipe	127.41			3845.16	
Change Over Sub	0.75			3845.91	
Anchor	18.00			3863.91	
Recorder	1.00	6663	Inside	3864.91	
Recorder	1.00	8400	Outside	3865.91	
Bull Plug	3.00			3868.91	156.91      Bottom Packers & Anchor

**Total Tool Length: 176.91**



# DRILL STEM TEST REPORT

## FLUID SUMMARY

Shelby Resources  
 2717 Canal Blvd. Hays Kansas 67601  
 ATTN: Keith Reavis

**36-21s-16w-Pawnee**  
**Prosser 1-36**  
 Job Ticket: 17870      **DST#: 1**  
 Test Start: 2012.11.22 @ 08:43:00

### Mud and Cushion Information

Mud Type: Gel Chem	Cushion Type:	Oil API:	deg API
Mud Weight: 10.00 lb/gal	Cushion Length: ft	Water Salinity:	ppm
Viscosity: 59.00 sec/qt	Cushion Volume: bbl		
Water Loss: 8.39 in <sup>3</sup>	Gas Cushion Type:		
Resistivity: 0.40 ohm.m	Gas Cushion Pressure: psia		
Salinity: 7000.00 ppm			
Filter Cake: 1.00 inches			

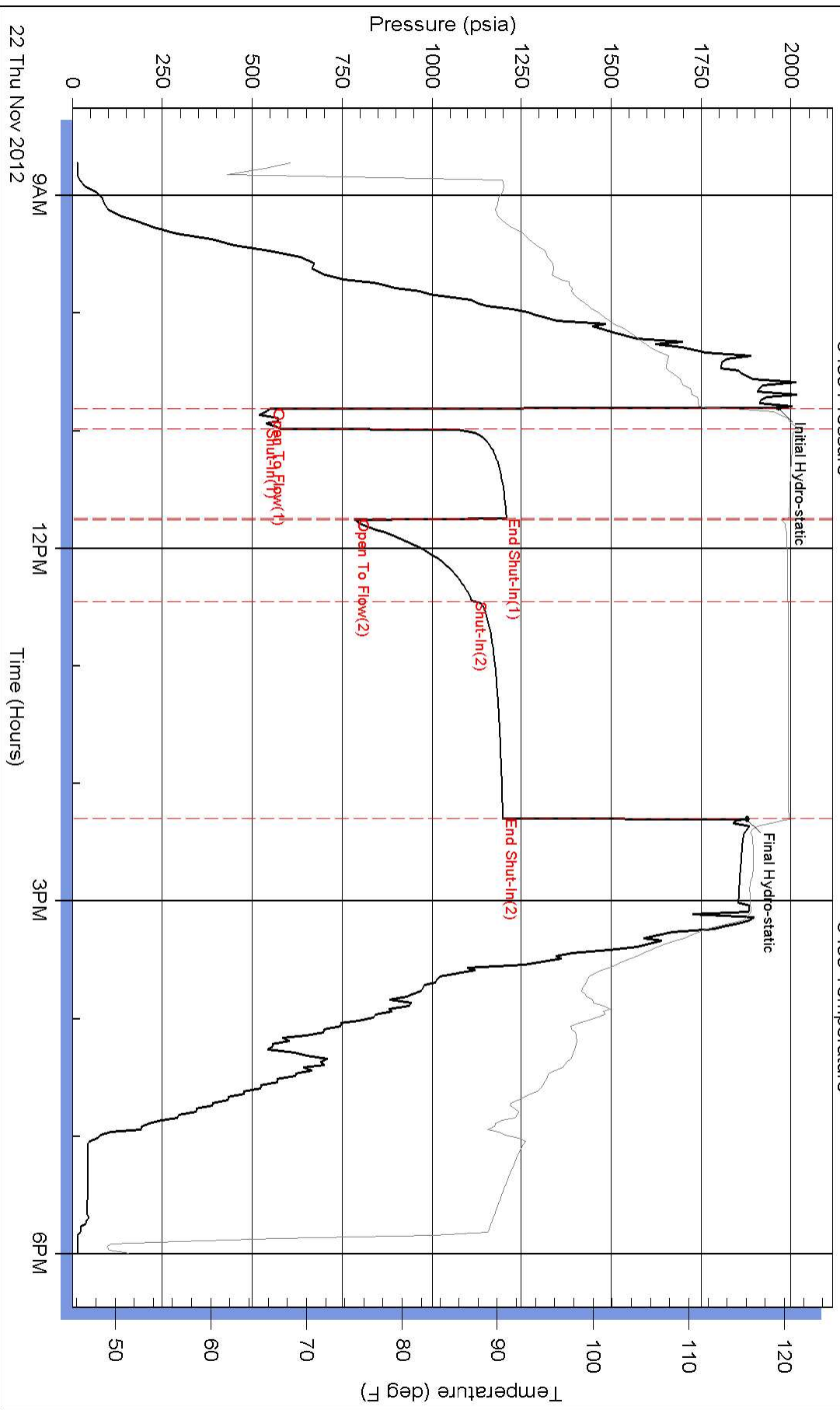
### Recovery Information

Recovery Table

Length ft	Description	Volume bbl
671.00	Mud cut oil 3% Oil 97%Mud	6.360
610.00	Mud cut gassy oil	8.557
0.00	75% Mud 20% Gas 5% Oil	0.000
608.00	Oil plus gas cut muddy w water	8.529
0.00	Mud 5% Water30% Gas55% Oil5%	0.000
0.00	Chlorides 46,000 67degrees	0.000

Total Length: 1889.00 ft      Total Volume: 23.446 bbl  
 Num Fluid Samples: 0      Num Gas Bombs: 0      Serial #:  
 Laboratory Name:      Laboratory Location:  
 Recovery Comments:

### Pressure vs. Time



### Pressure vs. Time

