

DRILL STEM TEST REPORT

Prepared For: **Brito Oil Company, Inc**

1700 N. Waterfront Pkwy
BLD 300 Suite C
Wichita KS 67206

ATTN: Pat Deenihan

Zerr #1 1

1-12s-33w Logan,KS

Start Date: 2012.10.28 @ 10:30:15

End Date: 2012.10.28 @ 19:39:45

Job Ticket #: 49857 DST #: 1

Trilobite Testing, Inc

PO Box 362 Hays, KS 67601

ph: 785-625-4778 fax: 785-625-5620

Printed: 2012.11.05 @ 14:32:53



**TRILOBITE
TESTING, INC.**

DRILL STEM TEST REPORT

Brito Oil Company, Inc
1700 N. Waterfront Pkwy
BLD 300 Suite C
Wichita KS 67206
ATTN: Pat Deenihan

1-12s-33w Logan, KS

Zerr #1 1

Job Ticket: 49857

DST#: 1

Test Start: 2012.10.28 @ 10:30:15

GENERAL INFORMATION:

Formation: **Lansing E**

Deviated: No Whipstock: ft (KB)

Time Tool Opened: 13:04:45

Time Test Ended: 19:39:45

Test Type: Conventional Bottom Hole (Initial)

Tester: Mike Roberts

Unit No: 65

Interval: 4085.00 ft (KB) To 4110.00 ft (KB) (TVD)

Reference Elevations: 3048.00 ft (KB)

Total Depth: 4110.00 ft (KB) (TVD)

3038.00 ft (CF)

Hole Diameter: 7.88 inches Hole Condition: Fair

KB to GR/CF: 10.00 ft

Serial #: 8365 Outside

Press @ Run Depth: 490.30 psig @ 4086.00 ft (KB)

Capacity: 8000.00 psig

Start Date: 2012.10.28

End Date: 2012.10.28

Last Calib.: 2012.10.28

Start Time: 10:30:15

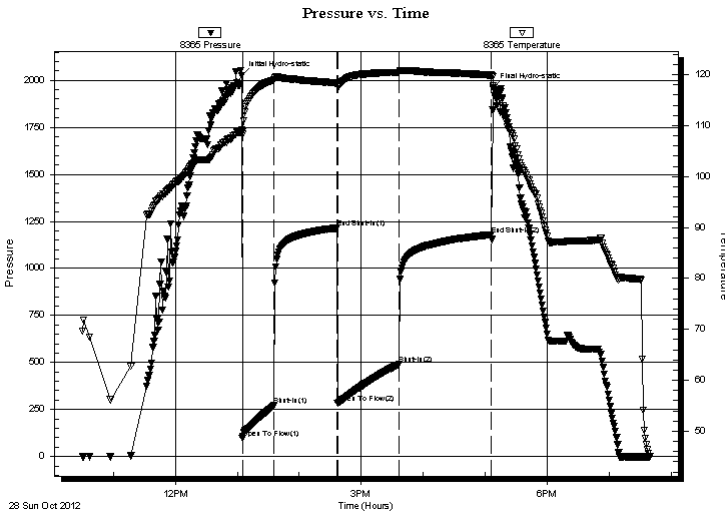
End Time: 19:39:45

Time On Btm: 2012.10.28 @ 13:04:30

Time Off Btm: 2012.10.28 @ 17:07:45

TEST COMMENT: IF:BOB in 5 min.
IS:Return blow built to 3"
FF:BOB in 3 min.
FS:Retrun blow built to 4 1/2"

PRESSURE SUMMARY



Time (Min.)	Pressure (psig)	Temp (deg F)	Annotation
0	2026.70	109.09	Initial Hydro-static
1	95.83	108.31	Open To Flow (1)
31	270.75	118.99	Shut-In(1)
92	1213.97	118.35	End Shut-In(1)
93	284.74	117.90	Open To Flow (2)
152	490.30	120.44	Shut-In(2)
242	1178.82	119.92	End Shut-In(2)
244	1959.70	117.84	Final Hydro-static

Recovery

Length (ft)	Description	Volume (bbl)
60.00	ocw m 5%o 5% w 90%m	0.30
921.00	gco 10%g 90%o	10.74

Gas Rates

	Choke (inches)	Pressure (psig)	Gas Rate (Mcf/d)



**TRILOBITE
TESTING, INC.**

DRILL STEM TEST REPORT

TOOL DIAGRAM

Brito Oil Company, Inc

1-12s-33w Logan,KS

1700 N.Waterfront Pkwy
BLD 300 Suite C
Wichita KS 67206
ATTN: Pat Deenihan

Zerr #1 1

Job Ticket: 49857

DST#: 1

Test Start: 2012.10.28 @ 10:30:15

Tool Information

Drill Pipe:	Length: 3777.00 ft	Diameter: 3.80 inches	Volume: 52.98 bbl	Tool Weight: 1500.00 lb
Heavy Wt. Pipe:	Length: 0.00 ft	Diameter: 0.00 inches	Volume: 0.00 bbl	Weight set on Packer: 20000.00 lb
Drill Collar:	Length: 299.00 ft	Diameter: 2.25 inches	Volume: 1.47 bbl	Weight to Pull Loose: 80000.00 lb
			<u>Total Volume: 54.45 bbl</u>	Tool Chased 0.00 ft
Drill Pipe Above KB:	15.00 ft			String Weight: Initial 62000.00 lb
Depth to Top Packer:	4085.00 ft			Final 66000.00 lb
Depth to Bottom Packer:	ft			
Interval between Packers:	25.00 ft			
Tool Length:	49.00 ft			
Number of Packers:	2	Diameter: 6.75 inches		

Tool Comments:

Tool Description	Length (ft)	Serial No.	Position	Depth (ft)	Accum. Lengths
------------------	-------------	------------	----------	------------	----------------

Change Over Sub	1.00			4062.00	
Shut In Tool	5.00			4067.00	
Hydraulic tool	5.00			4072.00	
Jars	5.00			4077.00	
Safety Joint	3.00			4080.00	
Packer	5.00			4085.00	24.00 Bottom Of Top Packer
Packer	0.00			4085.00	
Stubb	1.00			4086.00	
Recorder	0.00	6668	Inside	4086.00	
Recorder	0.00	8365	Outside	4086.00	
Perforations	19.00			4105.00	
Bullnose	5.00			4110.00	25.00 Bottom Packers & Anchor

Total Tool Length: 49.00



**TRILOBITE
TESTING, INC.**

DRILL STEM TEST REPORT

FLUID SUMMARY

Brito Oil Company, Inc

1-12s-33w Logan,KS

1700 N.Waterfront Pkwy
BLD 300 Suite C
Wichita KS 67206
ATTN: Pat Deenihan

Zerr #1 1

Job Ticket: 49857

DST#: 1

Test Start: 2012.10.28 @ 10:30:15

Mud and Cushion Information

Mud Type: Gel Chem

Cushion Type:

Oil API:

30 deg API

Mud Weight: 9.00 lb/gal

Cushion Length:

ft

Water Salinity:

0 ppm

Viscosity: 57.00 sec/qt

Cushion Volume:

bbbl

Water Loss: 7.89 in³

Gas Cushion Type:

Resistivity: 0.00 ohm.m

Gas Cushion Pressure:

psig

Salinity: 5000.00 ppm

Filter Cake: 1.00 inches

Recovery Information

Recovery Table

Length ft	Description	Volume bbbl
60.00	ocw m 5%o 5% w 90%m	0.295
921.00	gco 10%g 90%o	10.742

Total Length: 981.00 ft Total Volume: 11.037 bbl

Num Fluid Samples: 0

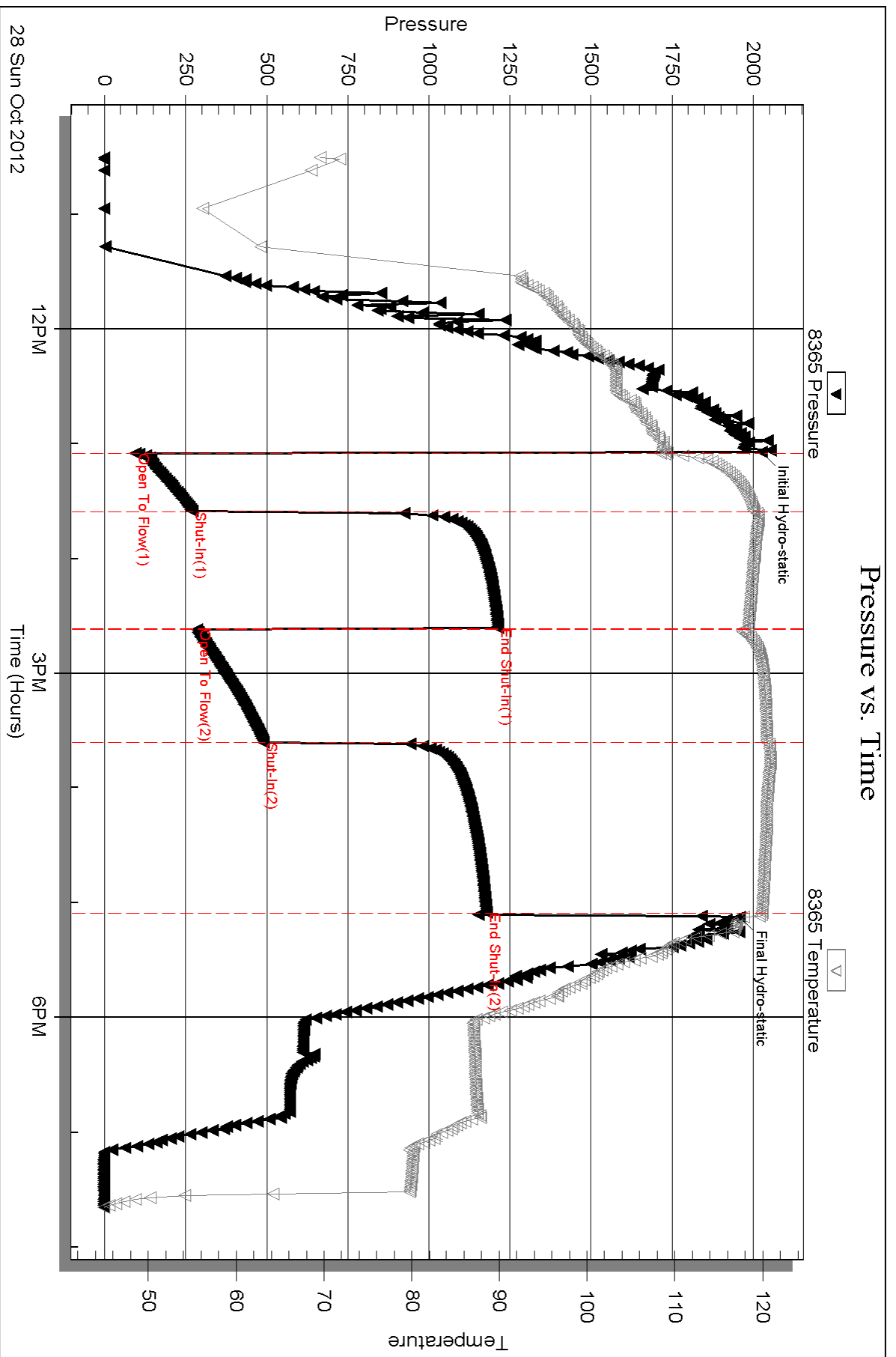
Num Gas Bombs: 0

Serial #:

Laboratory Name:

Laboratory Location:

Recovery Comments: API= 31 @ 70 corrected to 30 @ 60





DRILL STEM TEST REPORT

Prepared For: **Brito Oil Company, Inc**

1700 N. Waterfront Pkwy
BLD 300 Suite C
Wichita KS 67206

ATTN: Pat Deenihan

Zerr #1 1

1-12s-33w Logan,KS

Start Date: 2012.10.29 @ 09:32:15

End Date: 2012.10.29 @ 17:16:00

Job Ticket #: 49858 DST #: 2

Trilobite Testing, Inc
PO Box 362 Hays, KS 67601
ph: 785-625-4778 fax: 785-625-5620

Printed: 2012.11.05 @ 14:32:04



**TRILOBITE
TESTING, INC.**

DRILL STEM TEST REPORT

Brito Oil Company, Inc
1700 N. Waterfront Pkwy
BLD 300 Suite C
Wichita KS 67206
ATTN: Pat Deenihan

1-12s-33w Logan, KS

Zerr #1 1

Job Ticket: 49858

DST#: 2

Test Start: 2012.10.29 @ 09:32:15

GENERAL INFORMATION:

Formation: **H-I**
 Deviated: No Whipstock: ft (KB)
 Time Tool Opened: 11:18:15
 Time Test Ended: 17:16:00
 Interval: **4156.00 ft (KB) To 4205.00 ft (KB) (TVD)**
 Total Depth: 4205.00 ft (KB) (TVD)
 Hole Diameter: 7.88 inches Hole Condition: Fair
 Test Type: Conventional Bottom Hole (Reset)
 Tester: Mike Roberts
 Unit No: 65
 Reference Elevations: 3048.00 ft (KB)
 3038.00 ft (CF)
 KB to GR/CF: 10.00 ft

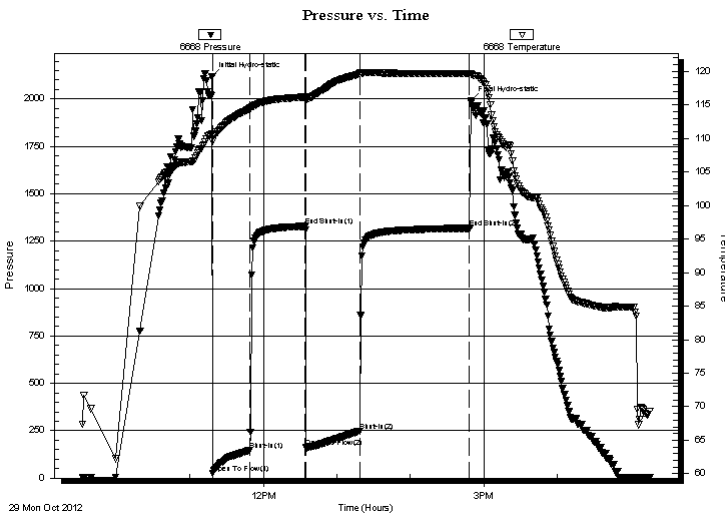
Serial #: 6668

Inside

Press @ Run Depth: 247.91 psig @ 4167.00 ft (KB) Capacity: 8000.00 psig
 Start Date: 2012.10.29 End Date: 2012.10.29 Last Calib.: 2012.10.29
 Start Time: 09:32:15 End Time: 17:16:00 Time On Btm: 2012.10.29 @ 11:18:00
 Time Off Btm: 2012.10.29 @ 14:49:30

TEST COMMENT: IF:BOB in 9 min.
 IS:No return blow
 FF:BOB in 8 min.
 FS:Return blow built to 8"

PRESSURE SUMMARY



Time (Min.)	Pressure (psig)	Temp (deg F)	Annotation
0	2117.08	110.69	Initial Hydro-static
1	25.59	109.60	Open To Flow (1)
31	147.08	114.43	Shut-In(1)
76	1328.50	116.17	End Shut-In(1)
77	160.38	115.77	Open To Flow (2)
121	247.91	119.60	Shut-In(2)
210	1318.26	119.63	End Shut-In(2)
212	1992.03	119.59	Final Hydro-static

Recovery

Length (ft)	Description	Volume (bbl)
60.00	mcog 30%m 30%o 40%g	0.30
239.00	mcgo 10%m 20%g 70%o	1.18
434.00	cgo 30%g 70%o	6.09
0.00	GIP= 620 feet 100%g	0.00

* Recovery from multiple tests

Gas Rates

Choke (inches)	Pressure (psig)	Gas Rate (Mcf/d)



**TRILOBITE
TESTING, INC.**

DRILL STEM TEST REPORT

TOOL DIAGRAM

Brito Oil Company, Inc

1-12s-33w Logan,KS

1700 N.Waterfront Pkwy
BLD 300 Suite C
Wichita KS 67206
ATTN: Pat Deenihan

Zerr #1 1

Job Ticket: 49858

DST#: 2

Test Start: 2012.10.29 @ 09:32:15

Tool Information

Drill Pipe:	Length: 3867.00 ft	Diameter: 3.80 inches	Volume: 54.24 bbl	Tool Weight:	1500.00 lb
Heavy Wt. Pipe:	Length: 0.00 ft	Diameter: 0.00 inches	Volume: 0.00 bbl	Weight set on Packer:	20000.00 lb
Drill Collar:	Length: 299.00 ft	Diameter: 2.25 inches	Volume: 1.47 bbl	Weight to Pull Loose:	80000.00 lb
			<u>Total Volume: 55.71 bbl</u>	Tool Chased	0.00 ft
Drill Pipe Above KB:	30.00 ft			String Weight: Initial	62000.00 lb
Depth to Top Packer:	4156.00 ft			Final	64000.00 lb
Depth to Bottom Packer:	ft				
Interval between Packers:	49.00 ft				
Tool Length:	69.00 ft				
Number of Packers:	2	Diameter:	6.75 inches		
Tool Comments:					

Tool Description	Length (ft)	Serial No.	Position	Depth (ft)	Accum. Lengths
------------------	-------------	------------	----------	------------	----------------

Change Over Sub	1.00			4137.00	
Shut In Tool	5.00			4142.00	
Hydraulic tool	5.00			4147.00	
Packer	5.00			4152.00	20.00 Bottom Of Top Packer
Packer	4.00			4156.00	
Stubb	1.00			4157.00	
Perforations	10.00			4167.00	
Recorder	0.00	6668	Inside	4167.00	
Recorder	0.00	8365	Outside	4167.00	
Change Over Sub	1.00			4168.00	
Drill Pipe	31.00			4199.00	
Change Over Sub	1.00			4200.00	
Bullnose	5.00			4205.00	49.00 Bottom Packers & Anchor

Total Tool Length: 69.00



**TRILOBITE
TESTING, INC.**

DRILL STEM TEST REPORT

FLUID SUMMARY

Brito Oil Company, Inc

1-12s-33w Logan,KS

1700 N.Waterfront Pkwy
BLD 300 Suite C
Wichita KS 67206
ATTN: Pat Deenihan

Zerr #1 1

Job Ticket: 49858

DST#: 2

Test Start: 2012.10.29 @ 09:32:15

Mud and Cushion Information

Mud Type: Gel Chem

Mud Weight: 9.00 lb/gal

Viscosity: 51.00 sec/qt

Water Loss: 6.34 in³

Resistivity: 0.00 ohm.m

Salinity: 5000.00 ppm

Filter Cake: 1.00 inches

Cushion Type:

Cushion Length: ft

Cushion Volume: bbl

Gas Cushion Type:

Gas Cushion Pressure: psig

Oil API:

Water Salinity: 0 ppm

30 deg API

Recovery Information

Recovery Table

Length ft	Description	Volume bbl
60.00	mcog 30%m 30%o 40%g	0.295
239.00	mcgo 10%m 20%g 70%o	1.175
434.00	cgo 30%g 70%o	6.088
0.00	GIP= 620 feet 100%g	0.000

Total Length: 733.00 ft Total Volume: 7.558 bbl

Num Fluid Samples: 0

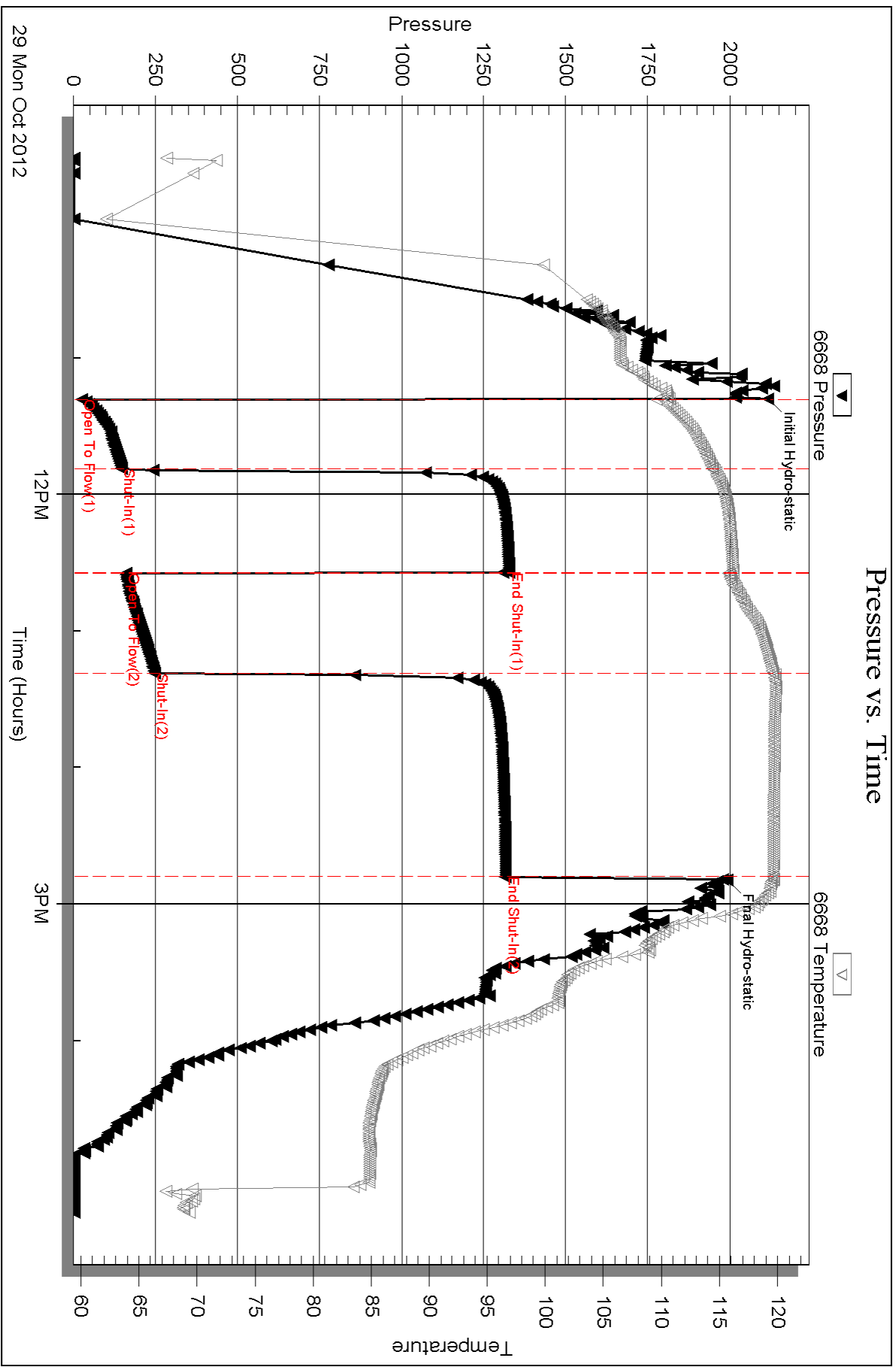
Num Gas Bombs: 0

Serial #:

Laboratory Name:

Laboratory Location:

Recovery Comments: API= 31 @70 corrected to 30@60

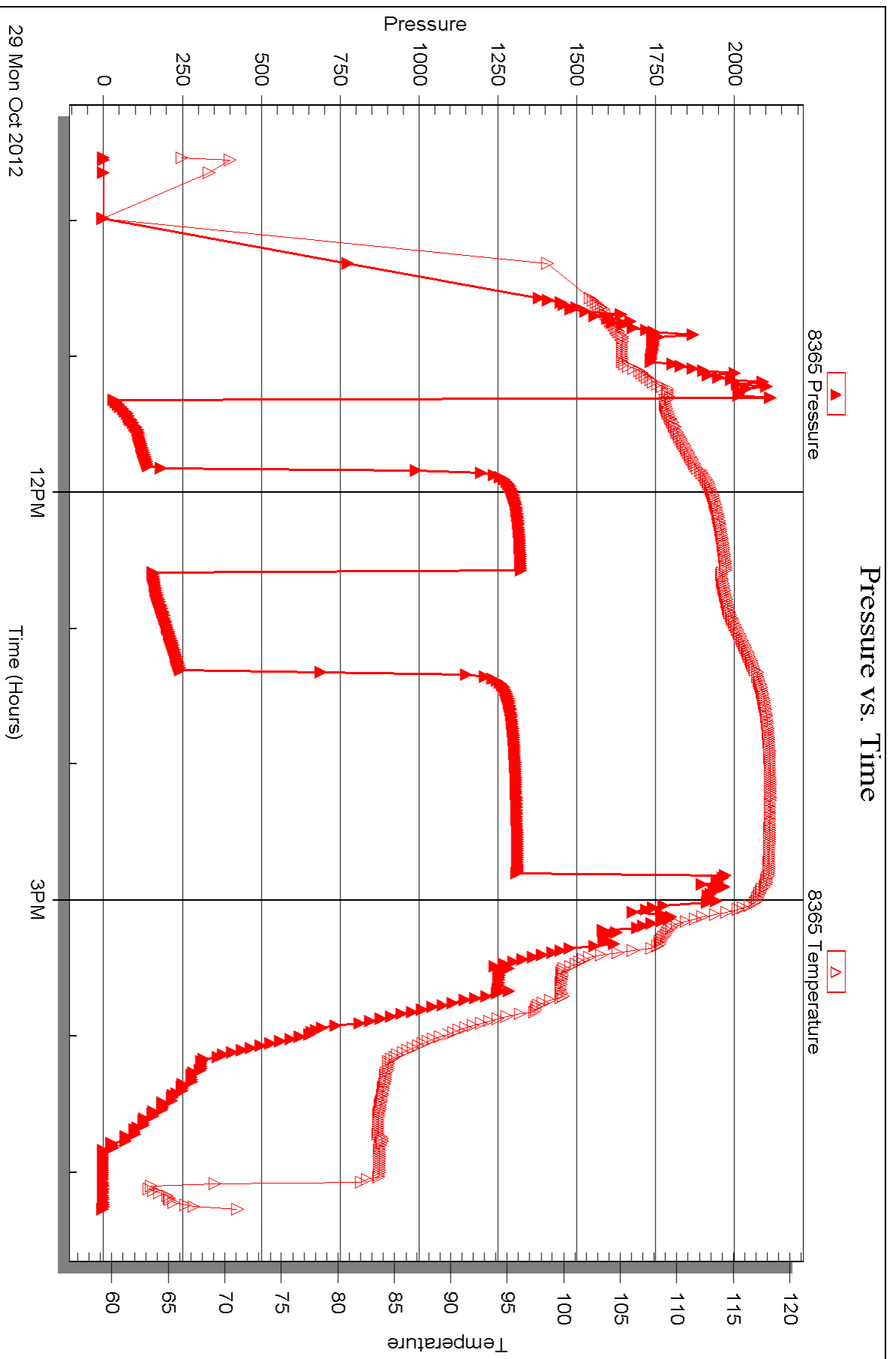


Serial #: 8365

Outside Brito Oil Company, Inc

Zerr #1 1

DST Test Number: 2





DRILL STEM TEST REPORT

Prepared For: **Brito Oil Company, Inc**

1700 N. Waterfront Pkwy
BLD 300 Suite C
Wichita KS 67206

ATTN: Pat Deenihan

Zerr #1 1

1-12s-33w Logan,KS

Start Date: 2012.10.29 @ 01:11:15

End Date: 2012.10.29 @ 05:19:30

Job Ticket #: 49859 DST #: 3

Trilobite Testing, Inc
PO Box 362 Hays, KS 67601
ph: 785-625-4778 fax: 785-625-5620

Printed: 2012.11.05 @ 14:31:14



TRILOBITE TESTING, INC.

DRILL STEM TEST REPORT

Brito Oil Company, Inc
 1700 N. Waterfront Pkwy
 BLD 300 Suite C
 Wichita KS 67206
 ATTN: Pat Deenihan

1-12s-33w Logan, KS

Zerr #1 1

Job Ticket: 49859

DST#: 3

Test Start: 2012.10.29 @ 01:11:15

GENERAL INFORMATION:

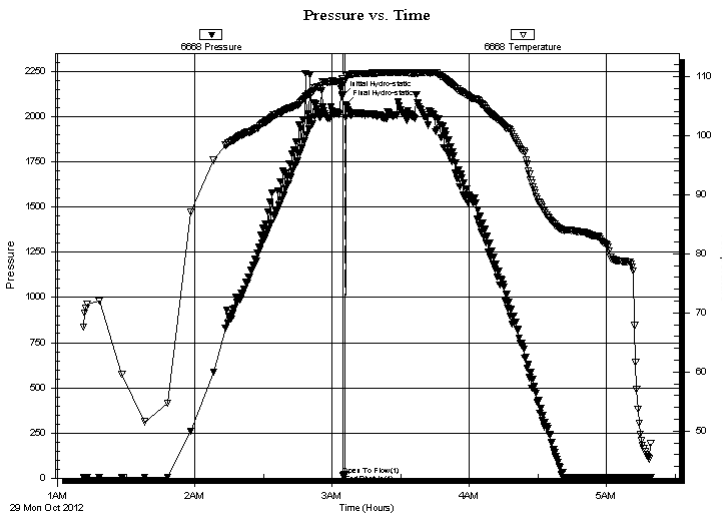
Formation: **J**
 Deviated: **No Whipstock:** ft (KB)
 Time Tool Opened: 03:04:45
 Time Test Ended: 05:19:30
 Test Type: Conventional Bottom Hole (Reset)
 Tester: Mike Roberts
 Unit No: 65
 Interval: **4208.00 ft (KB) To 4234.00 ft (KB) (TVD)**
 Reference Elevations: 3048.00 ft (KB)
 Total Depth: 4208.00 ft (KB) (TVD) 3038.00 ft (CF)
 Hole Diameter: 7.88 inches Hole Condition: Fair KB to GR/CF: 10.00 ft

Serial #: 6668

Inside

Press @ Run Depth: 18.34 psig @ 4209.00 ft (KB) Capacity: 8000.00 psig
 Start Date: 2012.10.29 End Date: 2012.10.29 Last Calib.: 2012.10.30
 Start Time: 01:11:15 End Time: 05:19:30 Time On Btm: 2012.10.29 @ 03:04:30
 Time Off Btm: 2012.10.29 @ 03:06:00

TEST COMMENT: IF: Lost Circulation before tool opened, opened tool for 3 min, pulled tool off btm worked on getting circulation back ,
 IS: no success getting circulation back
 FF:
 FS:



PRESSURE SUMMARY

Time (Min.)	Pressure (psig)	Temp (deg F)	Annotation
0	2119.44	109.59	Initial Hydro-static
1	17.28	108.88	Open To Flow (1)
1	18.34	109.17	End Shut-In(1)
2	2064.86	110.05	Final Hydro-static

Recovery

Length (ft)	Description	Volume (bbl)
2.00	mud	0.01

Gas Rates

Choke (inches)	Pressure (psig)	Gas Rate (Mcf/d)

* Recovery from multiple tests



**TRILOBITE
TESTING, INC.**

DRILL STEM TEST REPORT

TOOL DIAGRAM

Brito Oil Company, Inc

1-12s-33w Logan,KS

1700 N.Waterfront Pkwy
BLD 300 Suite C
Wichita KS 67206
ATTN: Pat Deenihan

Zerr #1 1

Job Ticket: 49859

DST#: 3

Test Start: 2012.10.29 @ 01:11:15

Tool Information

Drill Pipe:	Length: 3903.00 ft	Diameter: 3.80 inches	Volume: 54.75 bbl	Tool Weight:	1500.00 lb
Heavy Wt. Pipe:	Length: 0.00 ft	Diameter: 0.00 inches	Volume: 0.00 bbl	Weight set on Packer:	20000.00 lb
Drill Collar:	Length: 299.00 ft	Diameter: 2.25 inches	Volume: 1.47 bbl	Weight to Pull Loose:	80000.00 lb
			<u>Total Volume: 56.22 bbl</u>	Tool Chased	0.00 ft
Drill Pipe Above KB:	10.00 ft			String Weight: Initial	62000.00 lb
Depth to Top Packer:	4208.00 ft			Final	62000.00 lb
Depth to Bottom Packer:	ft				
Interval between Packers:	26.00 ft				
Tool Length:	42.00 ft				
Number of Packers:	2	Diameter:	6.75 inches		

Tool Comments: Lost Circulation before tool opened,

Tool Description

Tool Description	Length (ft)	Serial No.	Position	Depth (ft)	Accum. Lengths
Change Over Sub	1.00			4193.00	
Shut In Tool	5.00			4198.00	
Hydraulic tool	5.00			4203.00	
Packer	5.00			4208.00	16.00 Bottom Of Top Packer
Packer	0.00			4208.00	
Stubb	1.00			4209.00	
Recorder	0.00	6668	Inside	4209.00	
Recorder	0.00	8365	Outside	4209.00	
Perforations	20.00			4229.00	
Bullnose	5.00			4234.00	26.00 Bottom Packers & Anchor
Total Tool Length:	42.00				



**TRILOBITE
TESTING, INC.**

DRILL STEM TEST REPORT

FLUID SUMMARY

Brito Oil Company, Inc

1-12s-33w Logan,KS

1700 N.Waterfront Pkw y
BLD 300 Suite C
Wichita KS 67206
ATTN: Pat Deenihan

Zerr #1 1

Job Ticket: 49859

DST#: 3

Test Start: 2012.10.29 @ 01:11:15

Mud and Cushion Information

Mud Type: Gel Chem

Cushion Type:

Oil API:

0 deg API

Mud Weight: 9.00 lb/gal

Cushion Length:

ft

Water Salinity:

0 ppm

Viscosity: 51.00 sec/qt

Cushion Volume:

bbbl

Water Loss: 6.35 in³

Gas Cushion Type:

Resistivity: 0.00 ohm.m

Gas Cushion Pressure:

psig

Salinity: 5000.00 ppm

Filter Cake: 1.00 inches

Recovery Information

Recovery Table

Length ft	Description	Volume bbl
2.00	mud	0.010

Total Length: 2.00 ft Total Volume: 0.010 bbl

Num Fluid Samples: 0

Num Gas Bombs: 0

Serial #:

Laboratory Name:

Laboratory Location:

Recovery Comments:

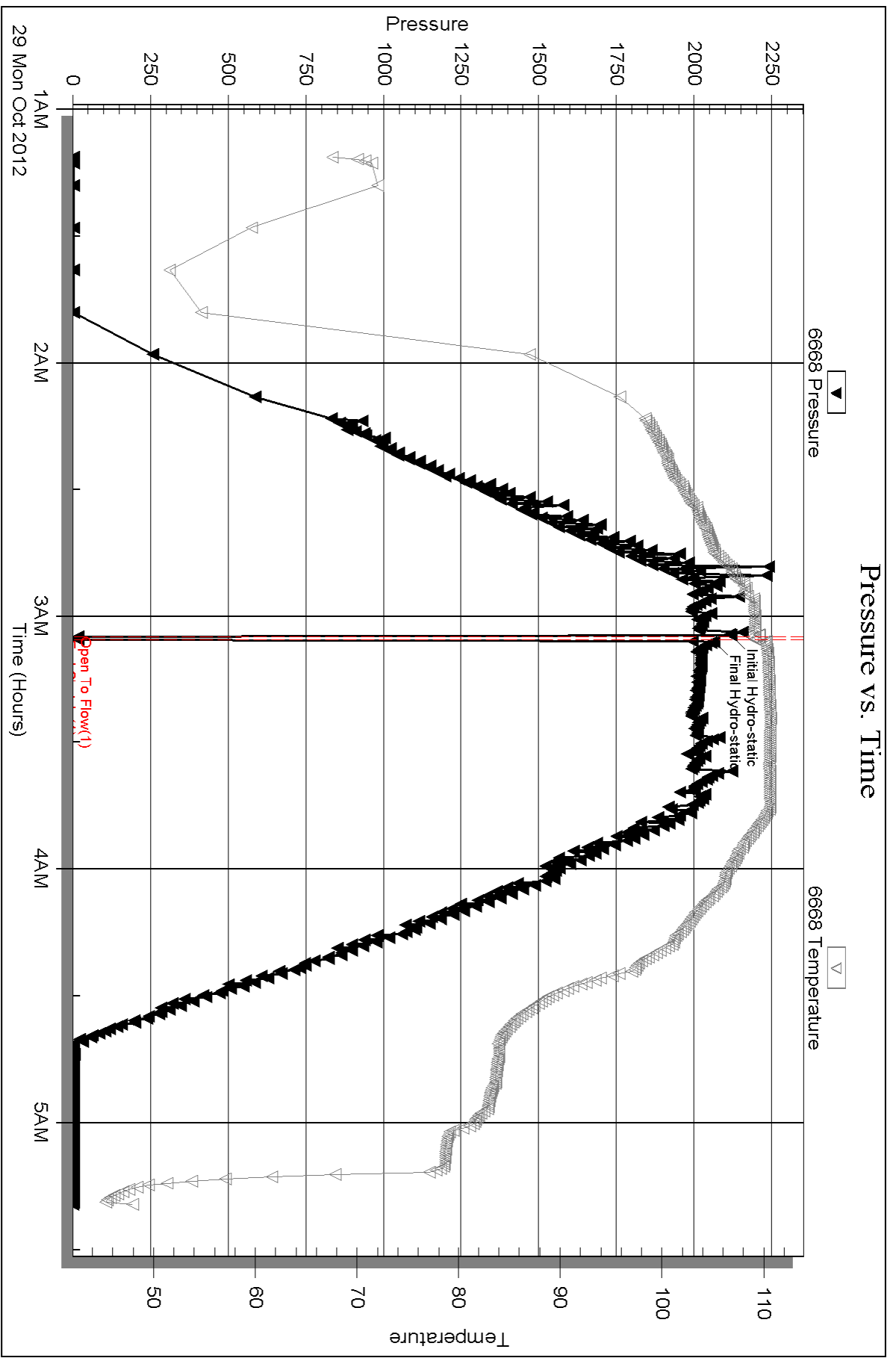
Serial #: 6668

Inside

Brito Oil Company, Inc

Zerr #1 1

DST Test Number: 3

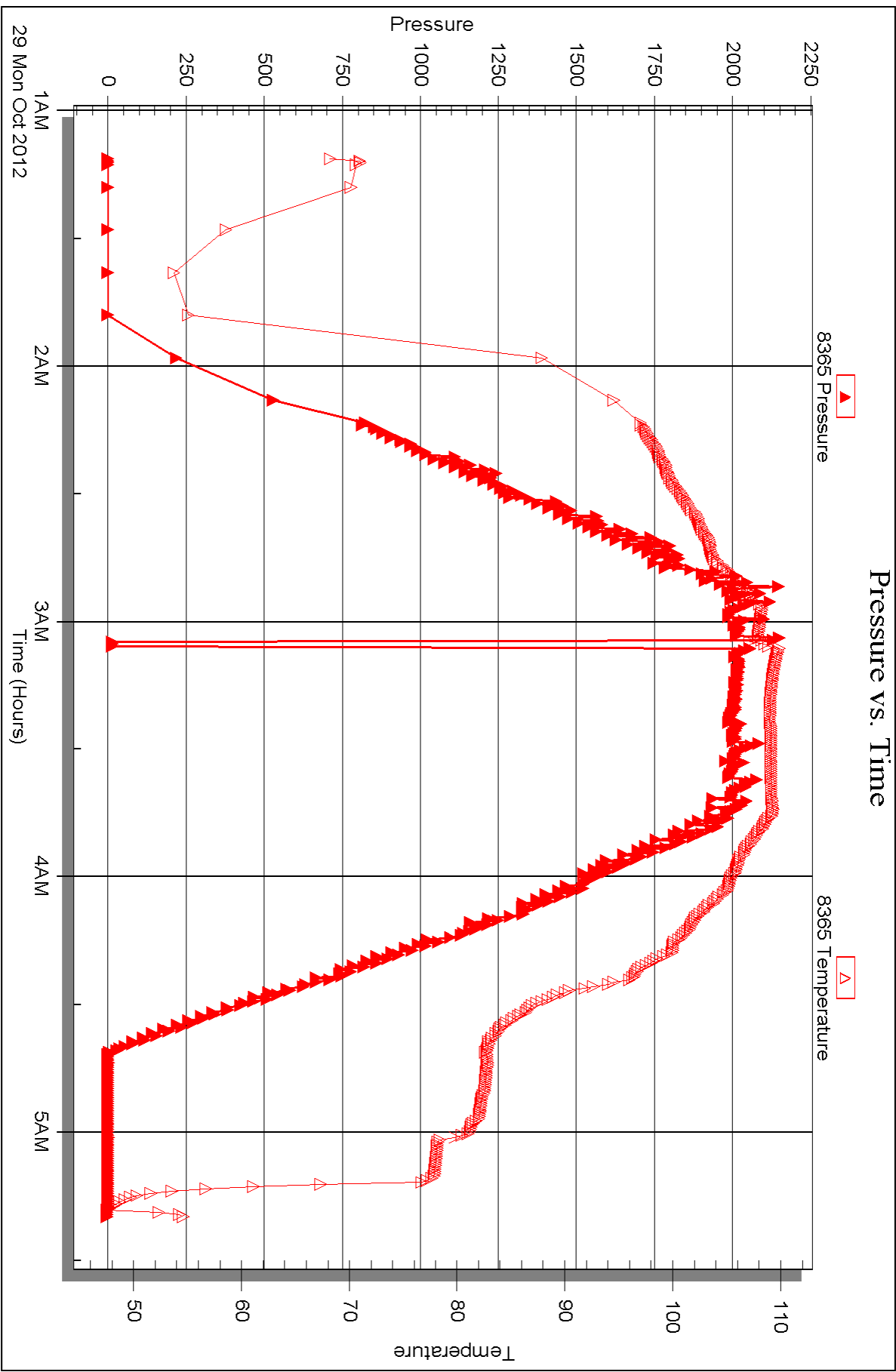


Serial #: 8365

Outside Brito Oil Company, Inc

Zerr #1 1

DST Test Number: 3





DRILL STEM TEST REPORT

Prepared For: **Brito Oil Company, Inc**

1700 N. Waterfront Pkwy
BLD 300 Suite C
Wichita KS 67206

ATTN: Pat Deenihan

Zerr #1 1

1-12s-33w Logan,KS

Start Date: 2012.10.30 @ 12:05:15

End Date: 2012.10.30 @ 19:08:15

Job Ticket #: 49860 DST #: 4

Trilobite Testing, Inc
PO Box 362 Hays, KS 67601
ph: 785-625-4778 fax: 785-625-5620

Printed: 2012.11.05 @ 14:27:14



**TRILOBITE
TESTING, INC.**

DRILL STEM TEST REPORT

Brito Oil Company, Inc
1700 N. Waterfront Pkwy
BLD 300 Suite C
Wichita KS 67206
ATTN: Pat Deenihan

1-12s-33w Logan, KS

Zerr #1 1

Job Ticket: 49860

DST#: 4

Test Start: 2012.10.30 @ 12:05:15

GENERAL INFORMATION:

Formation: "J"
Deviated: No Whipstock: ft (KB)
Time Tool Opened: 13:46:00
Time Test Ended: 19:08:15
Interval: **4208.00 ft (KB) To 4234.00 ft (KB) (TVD)**
Total Depth: 4234.00 ft (KB) (TVD)
Hole Diameter: 7.88 inches Hole Condition: Fair
Test Type: Conventional Bottom Hole (Reset)
Tester: Mike Roberts
Unit No: 65
Reference Elevations: 3048.00 ft (KB)
3038.00 ft (CF)
KB to GR/CF: 10.00 ft

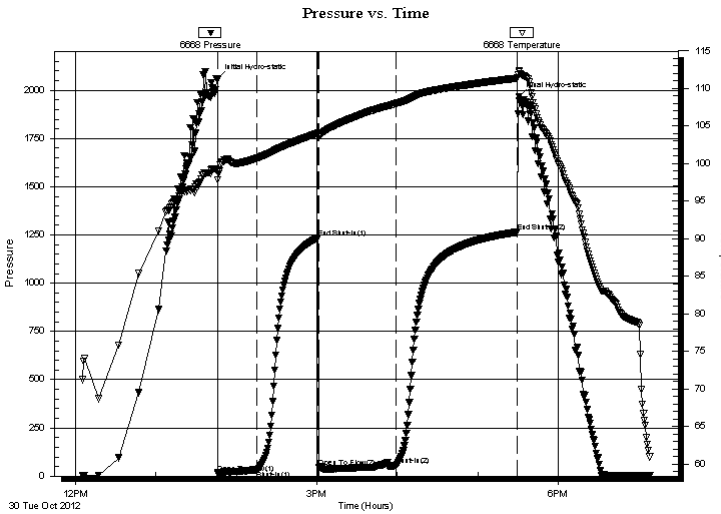
Serial #: 6668

Inside

Press @ Run Depth: 54.43 psig @ 4209.00 ft (KB)
Start Date: 2012.10.30 End Date: 2012.10.30
Start Time: 12:05:15 End Time: 19:08:15
Capacity: 8000.00 psig
Last Calib.: 2012.10.30
Time On Btm: 2012.10.30 @ 13:45:45
Time Off Btm: 2012.10.30 @ 17:31:00

TEST COMMENT: IF: Built to 3/4"
IS: No return blow
FF: BOB in 22 min.
FS: No return blow

PRESSURE SUMMARY



Time (Min.)	Pressure (psig)	Temp (deg F)	Annotation
0	2058.22	99.10	Initial Hydro-static
1	15.02	97.83	Open To Flow (1)
30	30.21	100.74	Shut-In(1)
75	1234.87	104.07	End Shut-In(1)
76	44.31	103.60	Open To Flow (2)
134	54.43	108.01	Shut-In(2)
224	1264.35	111.39	End Shut-In(2)
226	1965.49	112.30	Final Hydro-static

Recovery

Length (ft)	Description	Volume (bbl)
30.00	free oil 100% o	0.15
120.00	mco 15% m 15% g 70% o	0.59

* Recovery from multiple tests

Gas Rates

	Choke (inches)	Pressure (psig)	Gas Rate (Mcf/d)



**TRILOBITE
TESTING, INC.**

DRILL STEM TEST REPORT

TOOL DIAGRAM

Brito Oil Company, Inc

1-12s-33w Logan,KS

1700 N.Waterfront Pkwy
BLD 300 Suite C
Wichita KS 67206
ATTN: Pat Deenihan

Zerr #1 1

Job Ticket: 49860

DST#: 4

Test Start: 2012.10.30 @ 12:05:15

Tool Information

Drill Pipe:	Length: 3903.00 ft	Diameter: 3.80 inches	Volume: 54.75 bbl	Tool Weight:	1500.00 lb
Heavy Wt. Pipe:	Length: 0.00 ft	Diameter: 0.00 inches	Volume: 0.00 bbl	Weight set on Packer:	20000.00 lb
Drill Collar:	Length: 299.00 ft	Diameter: 2.25 inches	Volume: 1.47 bbl	Weight to Pull Loose:	80000.00 lb
			<u>Total Volume: 56.22 bbl</u>	Tool Chased	0.00 ft
Drill Pipe Above KB:	14.00 ft			String Weight: Initial	62000.00 lb
Depth to Top Packer:	4208.00 ft			Final	62000.00 lb
Depth to Bottom Packer:	ft				
Interval between Packers:	26.00 ft				
Tool Length:	46.00 ft				
Number of Packers:	2	Diameter: 6.75 inches			

Tool Comments:

Tool Description	Length (ft)	Serial No.	Position	Depth (ft)	Accum. Lengths
------------------	-------------	------------	----------	------------	----------------

Change Over Sub	1.00			4189.00	
Shut In Tool	5.00			4194.00	
Hydraulic tool	5.00			4199.00	
Packer	5.00			4204.00	20.00 Bottom Of Top Packer
Packer	4.00			4208.00	
Stubb	1.00			4209.00	
Recorder	0.00	6668	Inside	4209.00	
Recorder	0.00	8365	Outside	4209.00	
Perforations	20.00			4229.00	
Bullnose	5.00			4234.00	26.00 Bottom Packers & Anchor
Total Tool Length:	46.00				



**TRILOBITE
TESTING, INC.**

DRILL STEM TEST REPORT

FLUID SUMMARY

Brito Oil Company, Inc

1-12s-33w Logan,KS

1700 N.Waterfront Pkwy
BLD 300 Suite C
Wichita KS 67206
ATTN: Pat Deenihan

Zerr #1 1

Job Ticket: 49860

DST#: 4

Test Start: 2012.10.30 @ 12:05:15

Mud and Cushion Information

Mud Type: Gel Chem

Cushion Type:

Oil API:

32 deg API

Mud Weight: 9.00 lb/gal

Cushion Length:

ft

Water Salinity:

0 ppm

Viscosity: 57.00 sec/qt

Cushion Volume:

bbbl

Water Loss: 7.87 in³

Gas Cushion Type:

Resistivity: 0.00 ohm.m

Gas Cushion Pressure:

psig

Salinity: 5000.00 ppm

Filter Cake: 1.00 inches

Recovery Information

Recovery Table

Length ft	Description	Volume bbl
30.00	free oil 100% o	0.148
120.00	mcgo 15%m 15%g 70%o	0.590

Total Length: 150.00 ft Total Volume: 0.738 bbl

Num Fluid Samples: 0

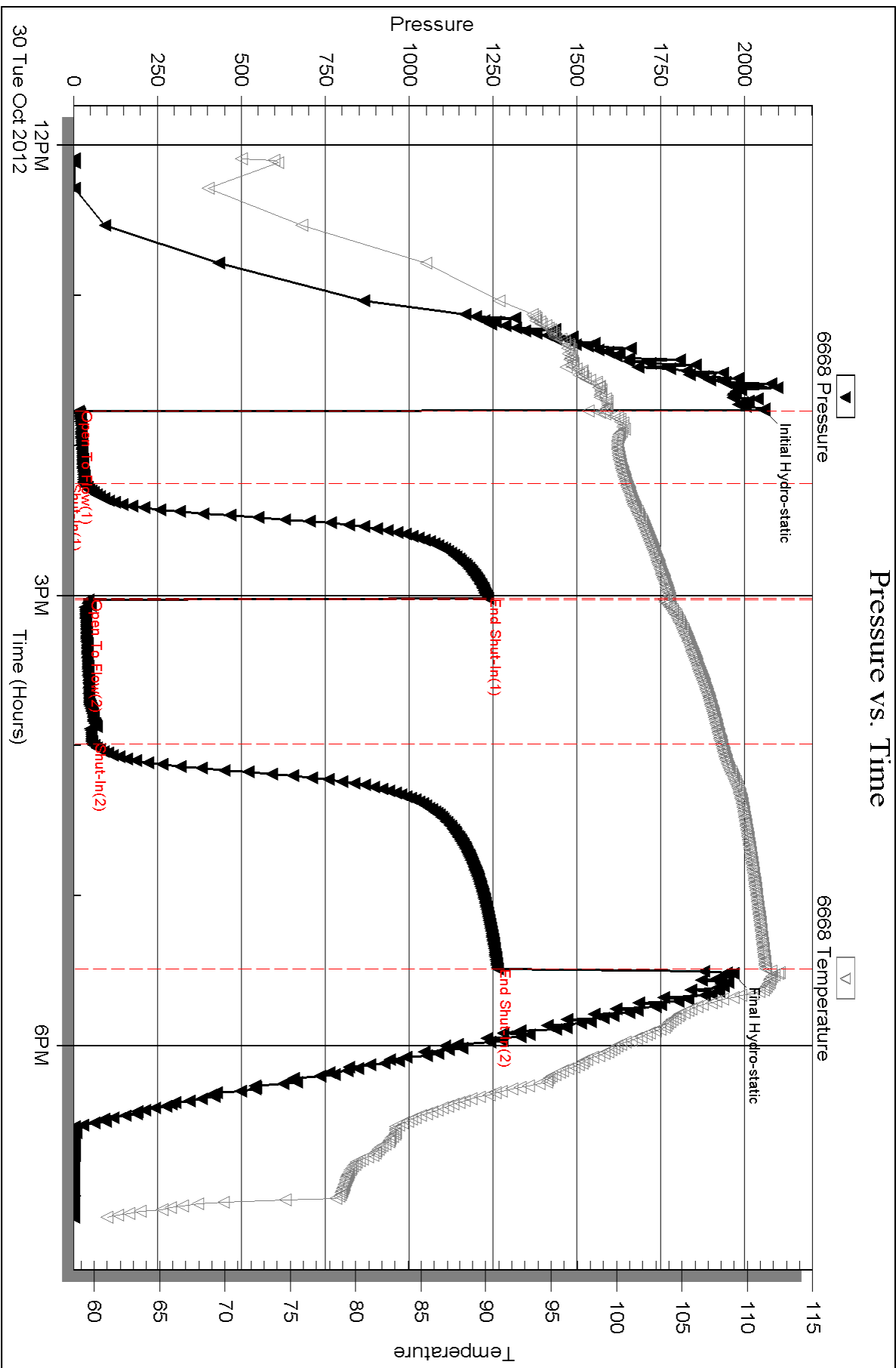
Num Gas Bombs: 0

Serial #:

Laboratory Name:

Laboratory Location:

Recovery Comments: API= 33 @70 corrected to 32 @ 60

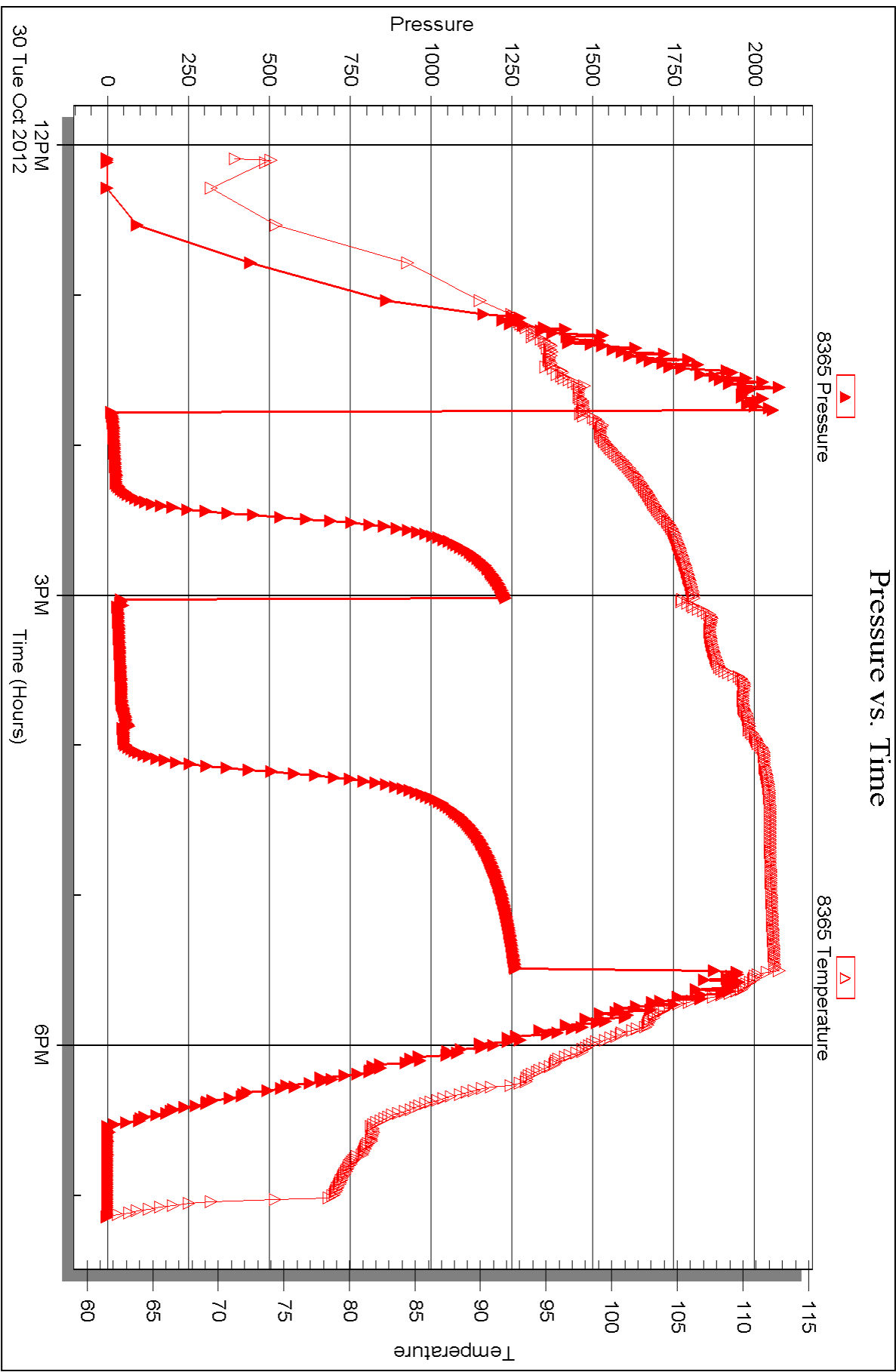


Serial #: 8365

Outside Brito Oil Company, Inc

Zerr #1 1

DST Test Number: 4





DRILL STEM TEST REPORT

Prepared For: **Brito Oil Company, Inc**

1700 N. Waterfront Pkwy
BLD 300 Suite C
Wichita KS 67206

ATTN: Pat Deenihan

Zerr #1 1

1-12s-33w Logan,KS

Start Date: 2012.10.31 @ 03:42:15

End Date: 2012.10.31 @ 10:34:45

Job Ticket #: 49861 DST #: 5

Trilobite Testing, Inc
PO Box 362 Hays, KS 67601
ph: 785-625-4778 fax: 785-625-5620

Printed: 2012.11.05 @ 14:26:26



**TRILOBITE
TESTING, INC.**

DRILL STEM TEST REPORT

Brito Oil Company, Inc
1700 N. Waterfront Pkwy
BLD 300 Suite C
Wichita KS 67206
ATTN: Pat Deenihan

1-12s-33w Logan, KS

Zerr #1 1

Job Ticket: 49861

DST#: 5

Test Start: 2012.10.31 @ 03:42:15

GENERAL INFORMATION:

Formation: **K**
 Deviated: No Whipstock: ft (KB)
 Time Tool Opened: 05:29:30
 Time Test Ended: 10:34:45
 Interval: **4235.00 ft (KB) To 4265.00 ft (KB) (TVD)**
 Total Depth: 4265.00 ft (KB) (TVD)
 Hole Diameter: 7.88 inches Hole Condition: Fair
 Test Type: Conventional Bottom Hole (Reset)
 Tester: Mike Roberts
 Unit No: 65
 Reference Elevations: 3048.00 ft (KB)
 3038.00 ft (CF)
 KB to GR/CF: 10.00 ft

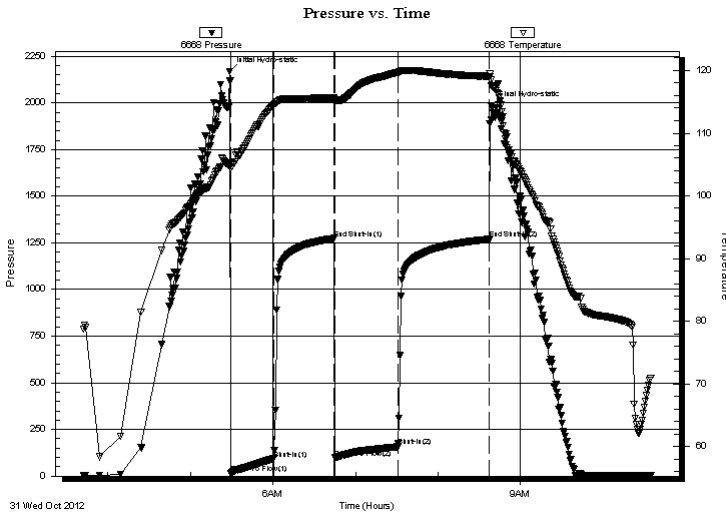
Serial #: 6668

Inside

Press @ Run Depth: 157.24 psig @ 4236.00 ft (KB) Capacity: 8000.00 psig
 Start Date: 2012.10.31 End Date: 2012.10.31 Last Calib.: 2012.10.31
 Start Time: 03:42:15 End Time: 10:34:45 Time On Btm: 2012.10.31 @ 05:28:30
 Time Off Btm: 2012.10.31 @ 08:39:00

TEST COMMENT: IS: Built to 7" blow
 IS: No return blow
 FF: Built to 8" blow
 FS: No return blow

PRESSURE SUMMARY



Time (Min.)	Pressure (psig)	Temp (deg F)	Annotation
0	2169.18	104.94	Initial Hydro-static
1	15.75	104.44	Open To Flow (1)
32	92.55	114.43	Shut-In(1)
76	1273.99	115.61	End Shut-In(1)
77	97.77	115.25	Open To Flow (2)
123	157.24	119.70	Shut-In(2)
189	1268.88	119.07	End Shut-In(2)
191	1985.28	117.56	Final Hydro-static

Recovery

Length (ft)	Description	Volume (bbl)
180.00	ocw m 2%o 20%w 78%m	0.89
120.00	mud w ith oil spots 100% m	0.60
30.00	mco 5%m 95%o	0.42

* Recovery from multiple tests

Gas Rates

Choke (inches)	Pressure (psig)	Gas Rate (Mcf/d)



**TRILOBITE
TESTING, INC.**

DRILL STEM TEST REPORT

TOOL DIAGRAM

Brito Oil Company, Inc

1-12s-33w Logan,KS

1700 N.Waterfront Pkwy
BLD 300 Suite C
Wichita KS 67206
ATTN: Pat Deenihan

Zerr #1 1

Job Ticket: 49861

DST#: 5

Test Start: 2012.10.31 @ 03:42:15

Tool Information

Drill Pipe:	Length: 3931.00 ft	Diameter: 3.80 inches	Volume: 55.14 bbl	Tool Weight: 1500.00 lb
Heavy Wt. Pipe:	Length: 0.00 ft	Diameter: 0.00 inches	Volume: 0.00 bbl	Weight set on Packer: 20000.00 lb
Drill Collar:	Length: 299.00 ft	Diameter: 2.25 inches	Volume: 1.47 bbl	Weight to Pull Loose: 80000.00 lb
			<u>Total Volume: 56.61 bbl</u>	Tool Chased 0.00 ft
Drill Pipe Above KB:	15.00 ft			String Weight: Initial 64000.00 lb
Depth to Top Packer:	4235.00 ft			Final 64000.00 lb
Depth to Bottom Packer:	ft			
Interval between Packers:	30.00 ft			
Tool Length:	50.00 ft			
Number of Packers:	2	Diameter: 6.75 inches		

Tool Comments:

Tool Description	Length (ft)	Serial No.	Position	Depth (ft)	Accum. Lengths
------------------	-------------	------------	----------	------------	----------------

Change Over Sub	1.00			4216.00	
Shut In Tool	5.00			4221.00	
Hydraulic tool	5.00			4226.00	
Packer	5.00			4231.00	20.00 Bottom Of Top Packer
Packer	4.00			4235.00	
Stubb	1.00			4236.00	
Recorder	0.00	6668	Inside	4236.00	
Recorder	0.00	8365	Outside	4236.00	
Perforations	24.00			4260.00	
Bullnose	5.00			4265.00	30.00 Bottom Packers & Anchor
Total Tool Length:	50.00				



**TRILOBITE
TESTING, INC.**

DRILL STEM TEST REPORT

FLUID SUMMARY

Brito Oil Company, Inc

1-12s-33w Logan,KS

1700 N.Waterfront Pkwy
BLD 300 Suite C
Wichita KS 67206
ATTN: Pat Deenihan

Zerr #1 1

Job Ticket: 49861

DST#: 5

Test Start: 2012.10.31 @ 03:42:15

Mud and Cushion Information

Mud Type: Gel Chem

Cushion Type:

Oil API:

34 deg API

Mud Weight: 9.00 lb/gal

Cushion Length:

ft

Water Salinity:

28000 ppm

Viscosity: 56.00 sec/qt

Cushion Volume:

bbbl

Water Loss: 7.15 in³

Gas Cushion Type:

Resistivity: 0.00 ohm.m

Gas Cushion Pressure:

psig

Salinity: 2000.00 ppm

Filter Cake: 1.00 inches

Recovery Information

Recovery Table

Length ft	Description	Volume bbl
180.00	ocw m 2%o 20%w 78%m	0.885
120.00	mud w ith oil spots 100% m	0.599
30.00	mco 5%m 95%o	0.421

Total Length: 330.00 ft Total Volume: 1.905 bbl

Num Fluid Samples: 0

Num Gas Bombs: 0

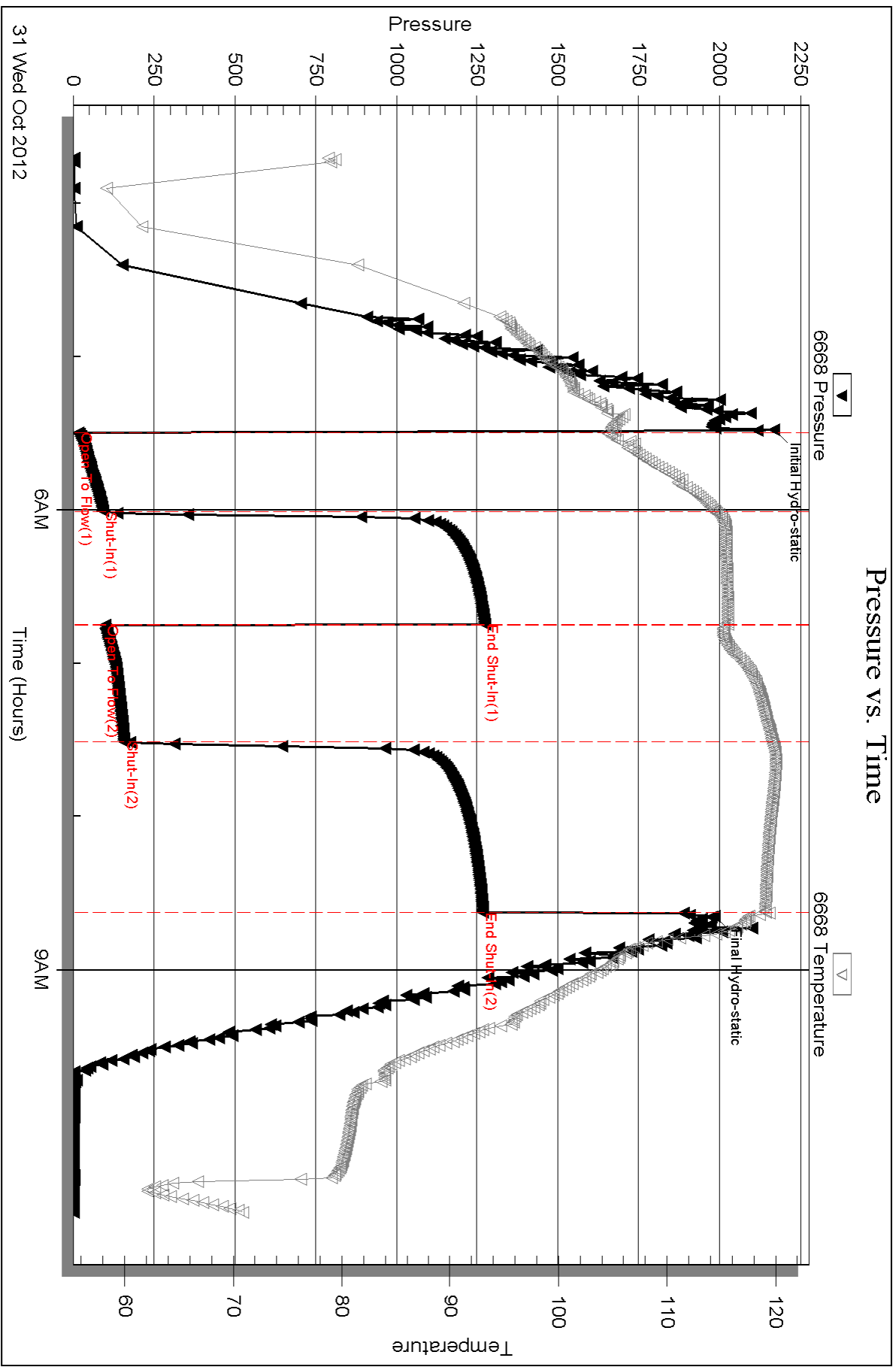
Serial #:

Laboratory Name:

Laboratory Location:

Recovery Comments: API= 34 @60

RW= .215@65*=28,000 ppm

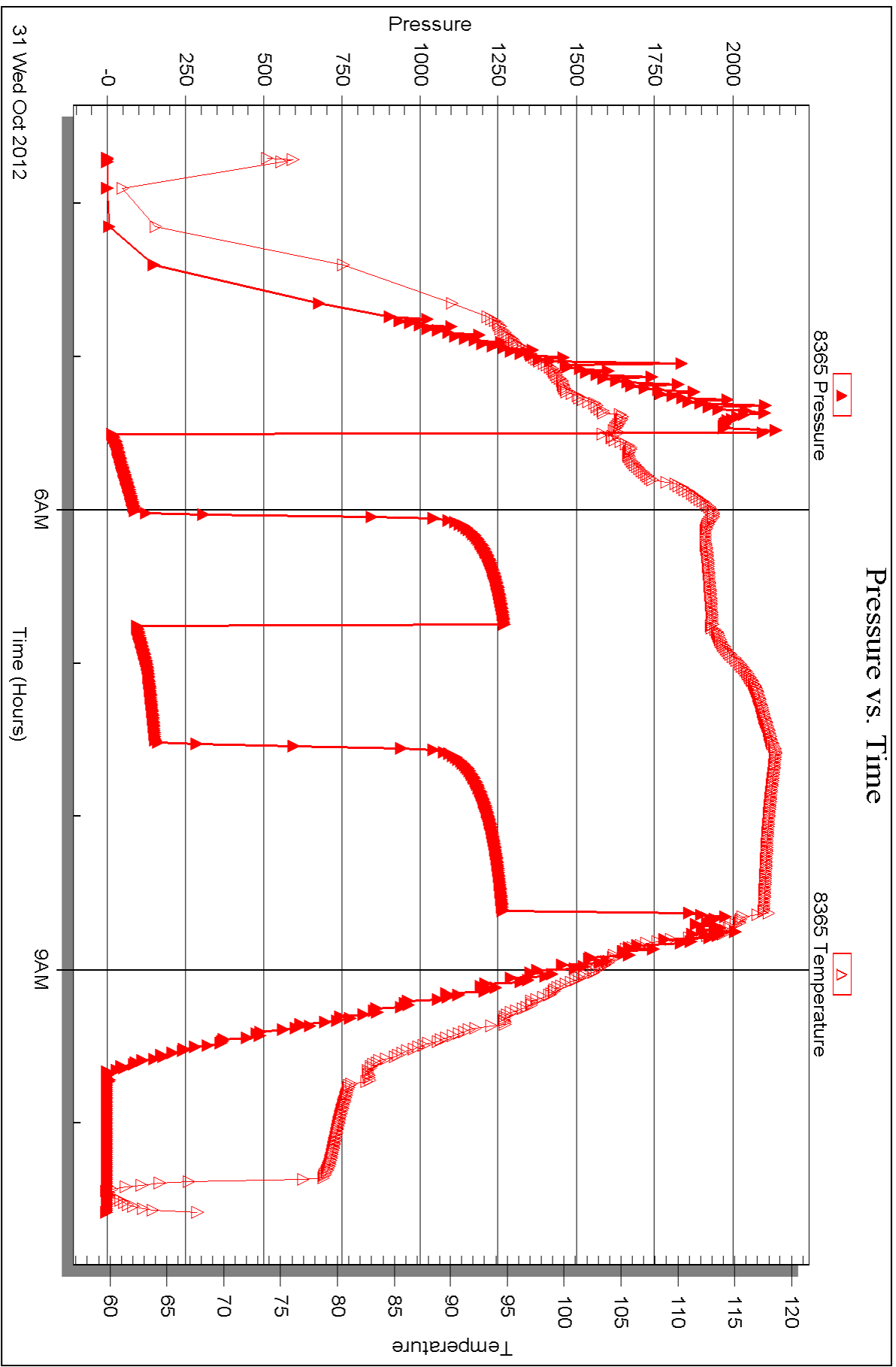


Serial #: 8365

Outside Brito Oil Company, Inc

Zerr #1 1

DST Test Number: 5





DRILL STEM TEST REPORT

Prepared For: **Brito Oil Company, Inc**

1700 N. Waterfront Pkwy
BLD 300 Suite C
Wichita KS 67206

ATTN: Pat Deenihan

Zerr #1 1

1-12s-33w Logan,KS

Start Date: 2012.10.31 @ 18:30:15

End Date: 2012.11.01 @ 00:27:00

Job Ticket #: 49862 DST #: 6

Trilobite Testing, Inc
PO Box 362 Hays, KS 67601
ph: 785-625-4778 fax: 785-625-5620

Printed: 2012.11.05 @ 14:25:31



TRILOBITE TESTING, INC.

DRILL STEM TEST REPORT

Brito Oil Company, Inc
 1700 N. Waterfront Pkwy
 BLD 300 Suite C
 Wichita KS 67206
 ATTN: Pat Deenihan

1-12s-33w Logan, KS

Zerr #1 1

Job Ticket: 49862

DST#: 6

Test Start: 2012.10.31 @ 18:30:15

GENERAL INFORMATION:

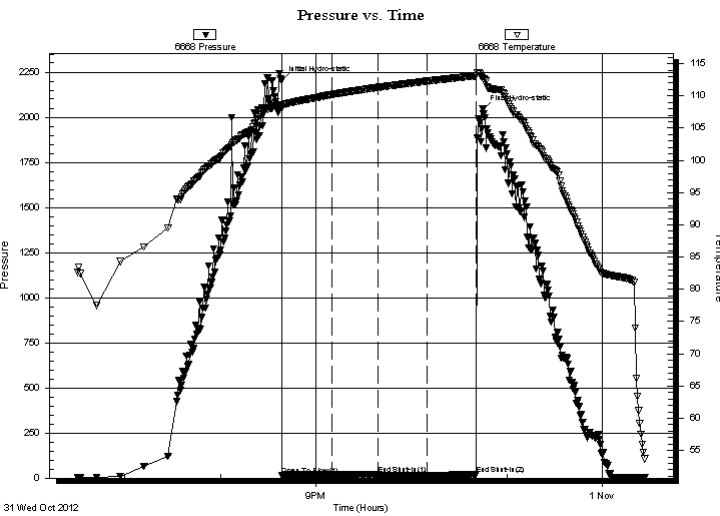
Formation: **L**
 Deviated: **No** Whipstock: **ft (KB)** Test Type: **Conventional Bottom Hole (Reset)**
 Time Tool Opened: **20:38:30** Tester: **Mike Roberts**
 Time Test Ended: **00:27:00** Unit No: **65**
Interval: 4274.00 ft (KB) To 4308.00 ft (KB) (TVD) Reference Elevations: **3048.00 ft (KB)**
 Total Depth: **4308.00 ft (KB) (TVD)** **3038.00 ft (CF)**
 Hole Diameter: **7.88 inches** Hole Condition: **Fair** KB to GR/CF: **10.00 ft**

Serial #: 6668

Inside

Press @ Run Depth: **16.55 psig @ 4275.00 ft (KB)** Capacity: **8000.00 psig**
 Start Date: **2012.10.31** End Date: **2012.11.01** Last Calib.: **2012.11.01**
 Start Time: **18:30:15** End Time: **00:27:00** Time On Btm: **2012.10.31 @ 20:38:15**
 Time Off Btm: **2012.10.31 @ 22:44:45**

TEST COMMENT: IF: Built to weak surface blow and died in 8 min.
 IS: No return blow
 FF: No blow
 FS: No return blow



PRESSURE SUMMARY

Time (Min.)	Pressure (psig)	Temp (deg F)	Annotation
0	2204.39	108.69	Initial Hydro-static
1	15.90	108.08	Open To Flow (1)
32	18.09	110.22	Shut-In(1)
61	21.93	111.31	End Shut-In(1)
61	16.01	111.33	Open To Flow (2)
92	16.55	112.28	Shut-In(2)
123	19.42	113.13	End Shut-In(2)
127	2044.44	112.85	Final Hydro-static

Recovery

Length (ft)	Description	Volume (bbl)
2.00	mud 100% m	0.01

* Recovery from multiple tests

Gas Rates

Choke (inches)	Pressure (psig)	Gas Rate (Mcf/d)



**TRILOBITE
TESTING, INC.**

DRILL STEM TEST REPORT

TOOL DIAGRAM

Brito Oil Company, Inc

1-12s-33w Logan,KS

1700 N.Waterfront Pkwy
BLD 300 Suite C
Wichita KS 67206
ATTN: Pat Deenihan

Zerr #1 1

Job Ticket: 49862

DST#: 6

Test Start: 2012.10.31 @ 18:30:15

Tool Information

Drill Pipe:	Length: 3960.00 ft	Diameter: 3.80 inches	Volume: 55.55 bbl	Tool Weight:	1500.00 lb
Heavy Wt. Pipe:	Length: 0.00 ft	Diameter: 0.00 inches	Volume: 0.00 bbl	Weight set on Packer:	20000.00 lb
Drill Collar:	Length: 299.00 ft	Diameter: 2.25 inches	Volume: 1.47 bbl	Weight to Pull Loose:	80000.00 lb
			<u>Total Volume: 57.02 bbl</u>	Tool Chased	0.00 ft
Drill Pipe Above KB:	5.00 ft			String Weight: Initial	65000.00 lb
Depth to Top Packer:	4274.00 ft			Final	65000.00 lb
Depth to Bottom Packer:	ft				
Interval between Packers:	34.00 ft				
Tool Length:	54.00 ft				
Number of Packers:	2	Diameter: 6.75 inches			

Tool Comments:

Tool Description	Length (ft)	Serial No.	Position	Depth (ft)	Accum. Lengths
------------------	-------------	------------	----------	------------	----------------

Change Over Sub	1.00			4255.00	
Shut In Tool	5.00			4260.00	
Hydraulic tool	5.00			4265.00	
Packer	5.00			4270.00	20.00 Bottom Of Top Packer
Packer	4.00			4274.00	
Stubb	1.00			4275.00	
Recorder	0.00	6668	Inside	4275.00	
Recorder	0.00	8365	Outside	4275.00	
Perforations	28.00			4303.00	
Bullnose	5.00			4308.00	34.00 Bottom Packers & Anchor
Total Tool Length:	54.00				



**TRILOBITE
TESTING, INC.**

DRILL STEM TEST REPORT

FLUID SUMMARY

Brito Oil Company, Inc

1-12s-33w Logan,KS

1700 N.Waterfront Pkw y
BLD 300 Suite C
Wichita KS 67206
ATTN: Pat Deenihan

Zerr #1 1

Job Ticket: 49862

DST#: 6

Test Start: 2012.10.31 @ 18:30:15

Mud and Cushion Information

Mud Type: Gel Chem

Cushion Type:

Oil API:

0 deg API

Mud Weight: 9.00 lb/gal

Cushion Length:

ft

Water Salinity:

0 ppm

Viscosity: 54.00 sec/qt

Cushion Volume:

bbbl

Water Loss: 7.57 in³

Gas Cushion Type:

Resistivity: 0.00 ohm.m

Gas Cushion Pressure:

psig

Salinity: 3000.00 ppm

Filter Cake: 1.00 inches

Recovery Information

Recovery Table

Length ft	Description	Volume bbl
2.00	mud 100%m	0.010

Total Length: 2.00 ft Total Volume: 0.010 bbl

Num Fluid Samples: 0

Num Gas Bombs: 0

Serial #:

Laboratory Name:

Laboratory Location:

Recovery Comments:

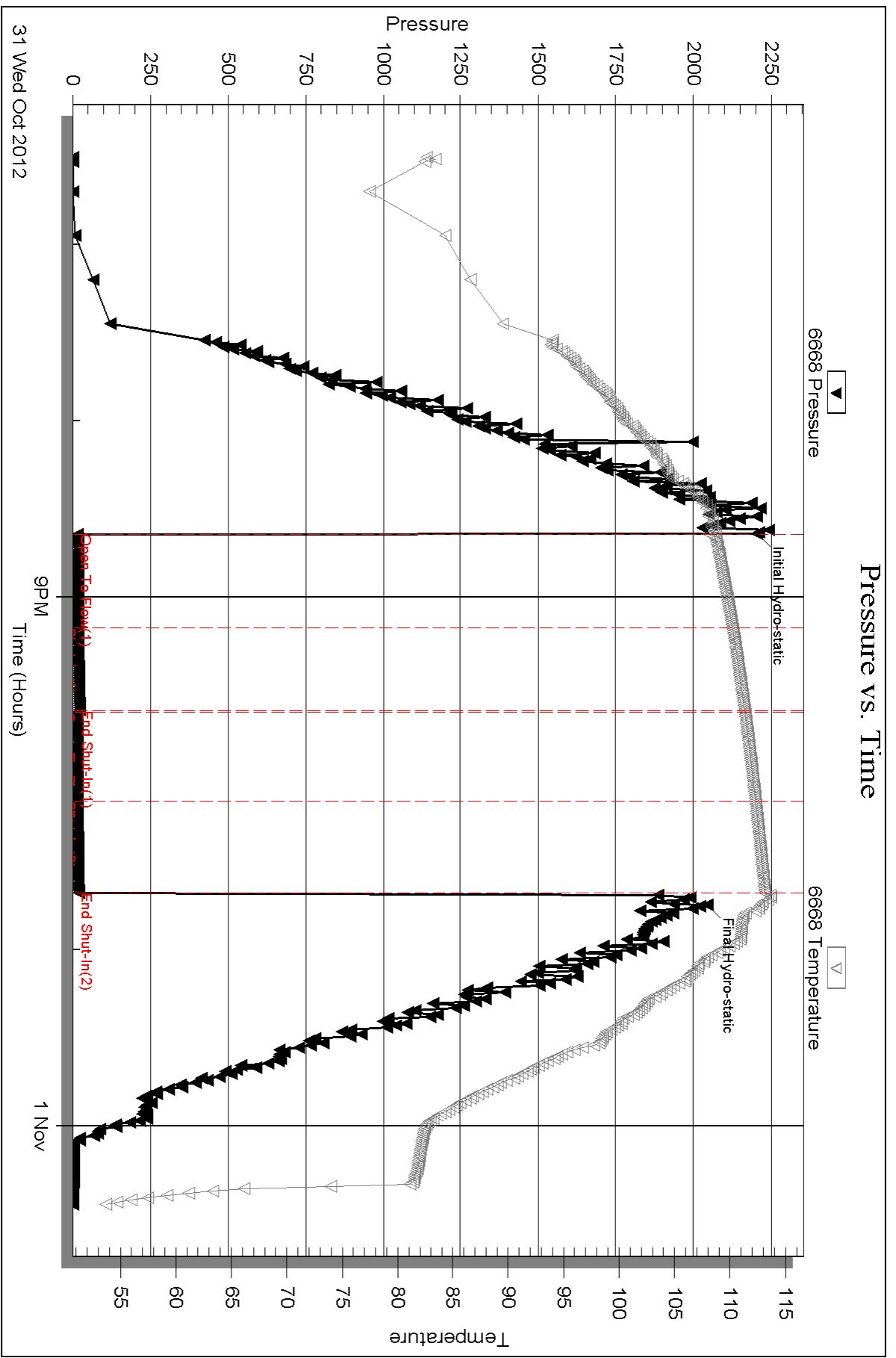
Serial #: 6668

Inside

Brito Oil Company, Inc

Zerr #1 1

DST Test Number: 6



Triobite Testing, Inc

Ref. No: 49862

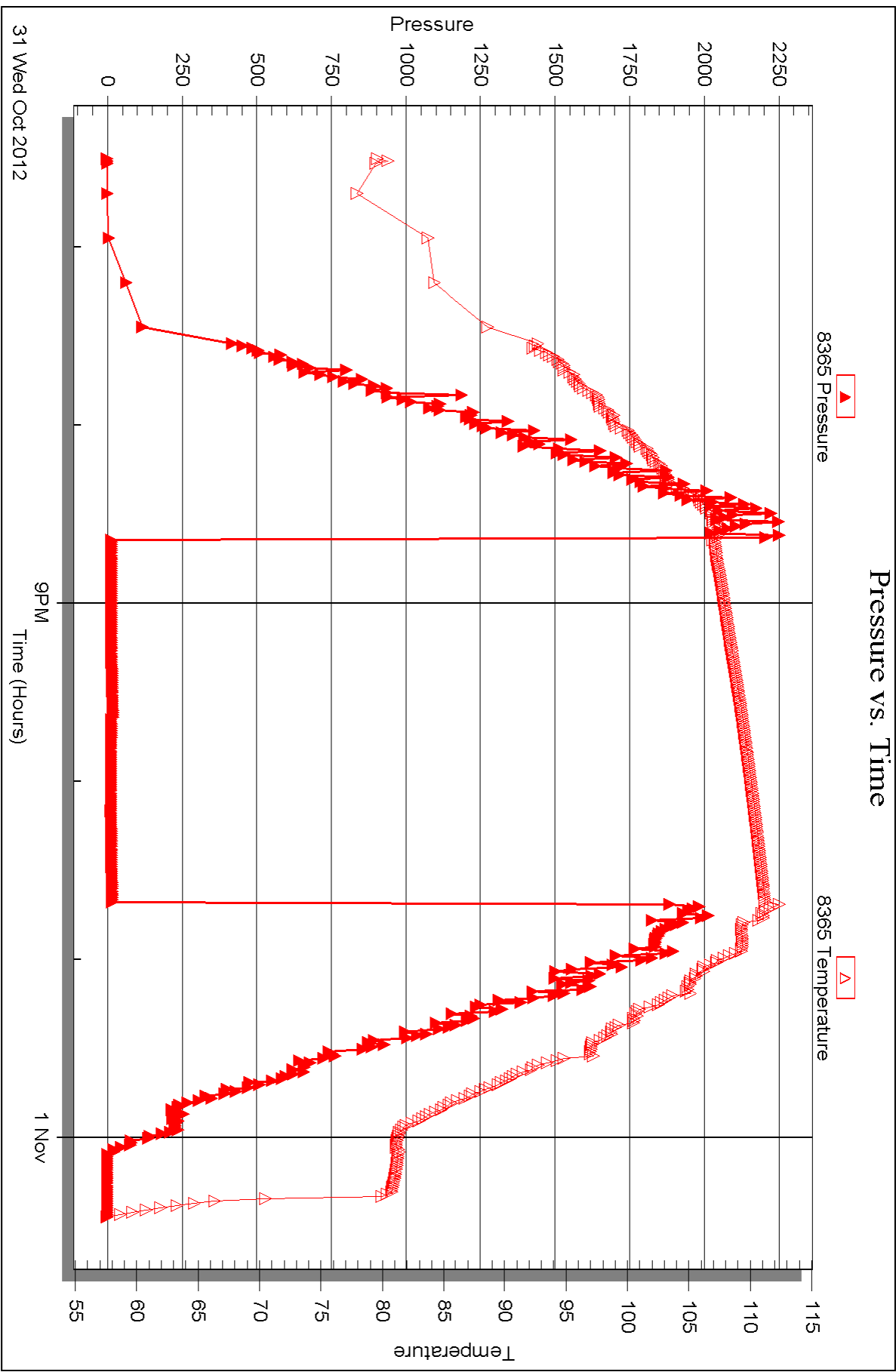
Printed: 2012.11.05 @ 14:25:35

Serial #: 8365

Outside Brito Oil Company, Inc

Zerr #1 1

DST Test Number: 6





DRILL STEM TEST REPORT

Prepared For: **Brito Oil Company, Inc**

1700 N. Waterfront Pkwy
BLD 300 Suite C
Wichita KS 67206

ATTN: Pat Deenihan

Zerr #1 1

1-12s-33w Logan,KS

Start Date: 2012.11.01 @ 20:21:15

End Date: 2012.11.02 @ 01:48:15

Job Ticket #: 49863 DST #: 7

Trilobite Testing, Inc
PO Box 362 Hays, KS 67601
ph: 785-625-4778 fax: 785-625-5620

Printed: 2012.11.05 @ 14:24:51



**TRILOBITE
TESTING, INC.**

DRILL STEM TEST REPORT

Brito Oil Company, Inc
1700 N. Waterfront Pkwy
BLD 300 Suite C
Wichita KS 67206
ATTN: Pat Deenihan

1-12s-33w Logan, KS

Zerr #1 1

Job Ticket: 49863

DST#: 7

Test Start: 2012.11.01 @ 20:21:15

GENERAL INFORMATION:

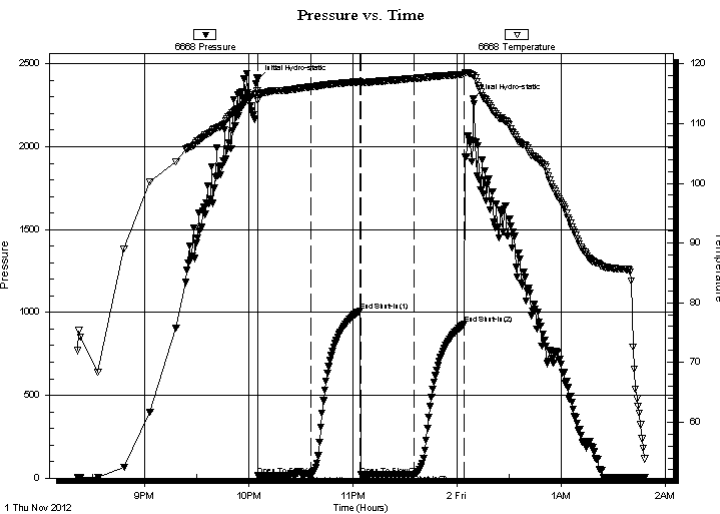
Formation: **Pawnee**
 Deviated: No Whipstock: ft (KB)
 Time Tool Opened: 22:05:15
 Time Test Ended: 01:48:15
 Interval: **4431.00 ft (KB) To 4453.00 ft (KB) (TVD)**
 Total Depth: 4453.00 ft (KB) (TVD)
 Hole Diameter: 7.88 inches Hole Condition: Fair
 Test Type: Conventional Bottom Hole (Reset)
 Tester: Mike Roberts
 Unit No: 65
 Reference Elevations: 3048.00 ft (KB)
 3038.00 ft (CF)
 KB to GR/CF: 10.00 ft

Serial #: 6668

Inside

Press @ Run Depth: 22.12 psig @ 4432.00 ft (KB)
 Start Date: 2012.11.01 End Date: 2012.11.02
 Start Time: 20:21:15 End Time: 01:48:15
 Capacity: 8000.00 psig
 Last Calib.: 2012.11.02
 Time On Btm: 2012.11.01 @ 22:05:00
 Time Off Btm: 2012.11.02 @ 00:09:30

TEST COMMENT: IF: Weak blow died in 1 min.
 IS: No return blow
 FF: No blow
 FS: No return blow



PRESSURE SUMMARY

Time (Min.)	Pressure (psig)	Temp (deg F)	Annotation
0	2406.95	115.47	Initial Hydro-static
1	15.06	113.90	Open To Flow (1)
31	18.42	116.16	Shut-In(1)
59	1009.99	117.02	End Shut-In(1)
60	19.73	116.59	Open To Flow (2)
91	22.12	117.55	Shut-In(2)
120	929.51	118.23	End Shut-In(2)
125	2288.57	118.11	Final Hydro-static

Recovery

Length (ft)	Description	Volume (bbl)
3.00	mud with oil spots 100% m	0.01

* Recovery from multiple tests

Gas Rates

Choke (inches)	Pressure (psig)	Gas Rate (Mcf/d)



**TRILOBITE
TESTING, INC.**

DRILL STEM TEST REPORT

TOOL DIAGRAM

Brito Oil Company, Inc

1-12s-33w Logan,KS

1700 N.Waterfront Pkwy
BLD 300 Suite C
Wichita KS 67206
ATTN: Pat Deenihan

Zerr #1 1

Job Ticket: 49863

DST#: 7

Test Start: 2012.11.01 @ 20:21:15

Tool Information

Drill Pipe:	Length: 4123.00 ft	Diameter: 3.80 inches	Volume: 57.83 bbl	Tool Weight: 1500.00 lb
Heavy Wt. Pipe:	Length: 0.00 ft	Diameter: 0.00 inches	Volume: 0.00 bbl	Weight set on Packer: 20000.00 lb
Drill Collar:	Length: 299.00 ft	Diameter: 2.25 inches	Volume: 1.47 bbl	Weight to Pull Loose: 80000.00 lb
			<u>Total Volume: 59.30 bbl</u>	Tool Chased 0.00 ft
Drill Pipe Above KB:	7.00 ft			String Weight: Initial 64000.00 lb
Depth to Top Packer:	4431.00 ft			Final 64000.00 lb
Depth to Bottom Packer:	ft			
Interval between Packers:	22.00 ft			
Tool Length:	38.00 ft			
Number of Packers:	2	Diameter: 6.75 inches		

Tool Comments:

Tool Description	Length (ft)	Serial No.	Position	Depth (ft)	Accum. Lengths
------------------	-------------	------------	----------	------------	----------------

Change Over Sub	1.00			4416.00	
Shut In Tool	5.00			4421.00	
Hydraulic tool	5.00			4426.00	
Packer	5.00			4431.00	16.00 Bottom Of Top Packer
Packer	0.00			4431.00	
Stubb	1.00			4432.00	
Recorder	0.00	6668	Inside	4432.00	
Recorder	0.00	8365	Outside	4432.00	
Perforations	16.00			4448.00	
Bullnose	5.00			4453.00	22.00 Bottom Packers & Anchor
Total Tool Length:	38.00				



**TRILOBITE
TESTING, INC.**

DRILL STEM TEST REPORT

FLUID SUMMARY

Brito Oil Company, Inc

1-12s-33w Logan,KS

1700 N.Waterfront Pkw y
BLD 300 Suite C
Wichita KS 67206
ATTN: Pat Deenihan

Zerr #1 1

Job Ticket: 49863

DST#: 7

Test Start: 2012.11.01 @ 20:21:15

Mud and Cushion Information

Mud Type: Gel Chem

Cushion Type:

Oil API:

0 deg API

Mud Weight: 9.00 lb/gal

Cushion Length:

ft

Water Salinity:

0 ppm

Viscosity: 61.00 sec/qt

Cushion Volume:

bbbl

Water Loss: 9.14 in³

Gas Cushion Type:

Resistivity: 0.00 ohm.m

Gas Cushion Pressure:

psig

Salinity: 3000.00 ppm

Filter Cake: 1.00 inches

Recovery Information

Recovery Table

Length ft	Description	Volume bbl
3.00	mud w ith oil spots 100% m	0.015

Total Length: 3.00 ft Total Volume: 0.015 bbl

Num Fluid Samples: 0

Num Gas Bombs: 0

Serial #:

Laboratory Name:

Laboratory Location:

Recovery Comments:

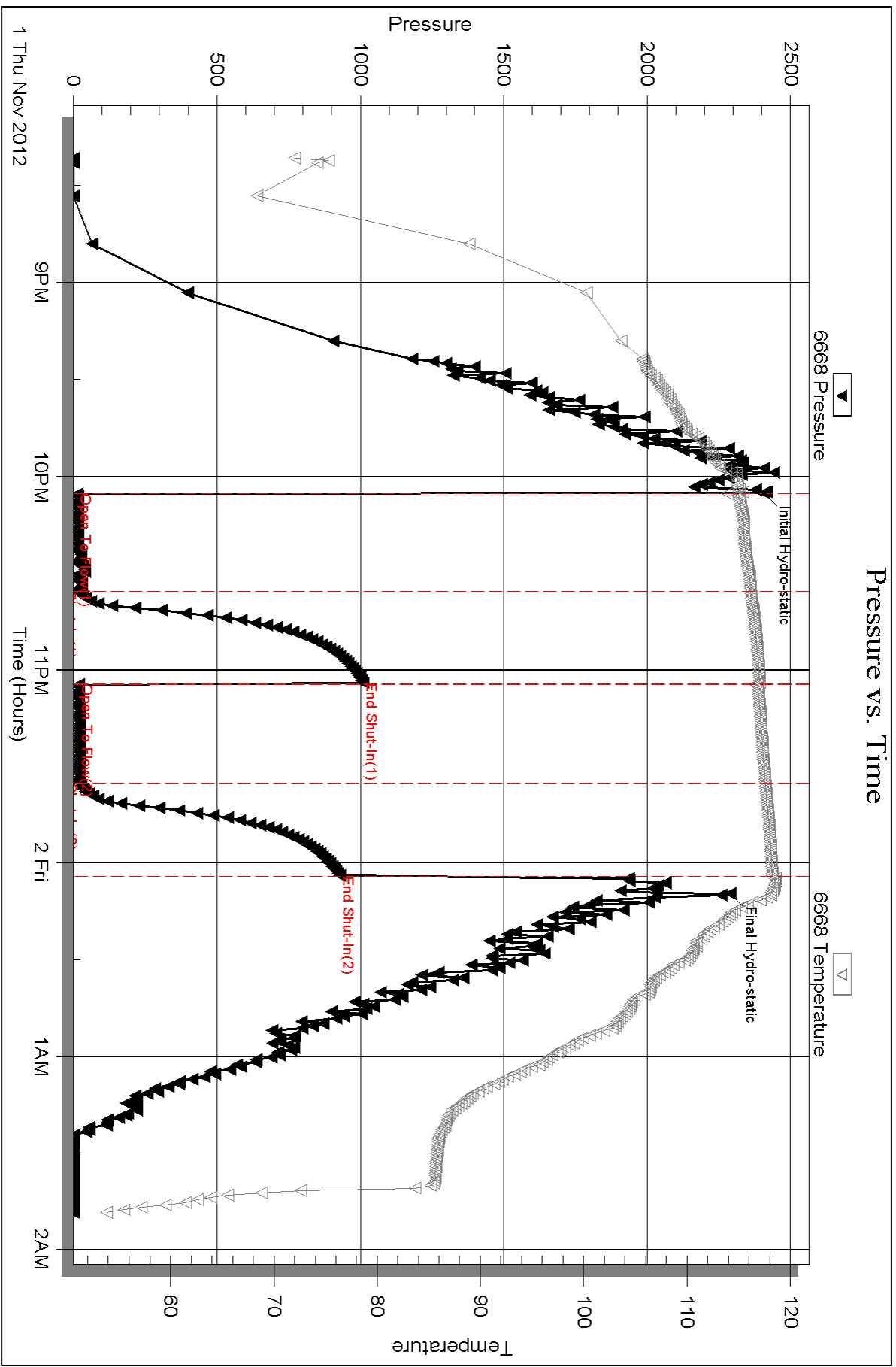
Serial #: 6668

Inside

Brito Oil Company, Inc

Zerr #1 1

DST Test Number: 7

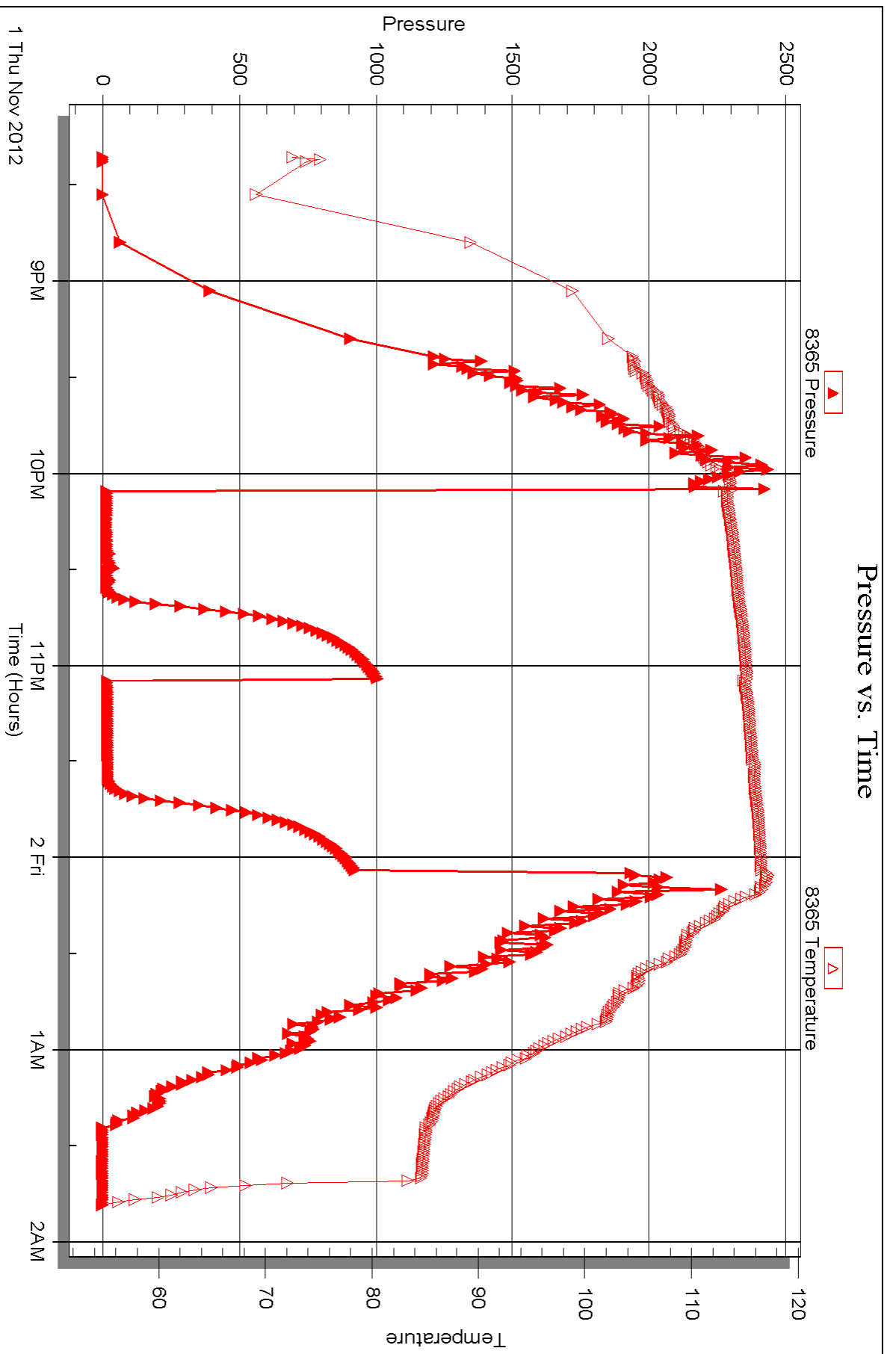


Serial #: 8365

Outside Brito Oil Company, Inc

Zerr #1 1

DST Test Number: 7



Triobite Testing, Inc

Ref. No: 49863

Printed: 2012.11.05 @ 14:24:55



TRILOBITE TESTING INC.

1515 Commerce Parkway • Hays, Kansas 67601

Test Ticket

NO. 49857

Well Name & No. Zerr 1-1 Test No. 1 Date 10-28-12
 Company Brito Oil Company Inc Elevation 3048 KB 3038 GL
 Address 1700 N. Waterfront Pkwy Bld. 300 Suite C Wichita KS 67206
 Co. Rep / Geo. PAT Deenihan Rig Murkin 21
 Location: Sec. 1 Twp. 12 Rge. 33 Co. Logan State KS

Interval Tested 4085-4110 Zone Tested Lansing E
 Anchor Length 25' Drill Pipe Run 3777 Mud Wt. 9.3
 Top Packer Depth 4081 Drill Collars Run 299 Vis 57
 Bottom Packer Depth 4085 Wt. Pipe Run Ø WL 8.0
 Total Depth 4110 Chlorides 5000 ppm System LCM 1
 Blow Description IF: BOB in 5 Min
IS: Return Blow Built to 3"
FF: BOB in 3 Min
FS: Return Blow Built to 4 1/2"

Rec	Feet of	%gas	%oil	%water	%mud
921 921	900	10	90		
60	0 CUM		5	5	90

Rec Total 981 BHT 120 Gravity 30 API RW ✓ @ ✓ °F Chlorides ✓ ppm

(A) Initial Hydrostatic <u>2026</u>	<input checked="" type="checkbox"/> Test 1250	T-On Location <u>10:00</u>
(B) First Initial Flow <u>95</u>	<input checked="" type="checkbox"/> Jars 250	T-Started <u>10:30</u>
(C) First Final Flow <u>270</u>	<input checked="" type="checkbox"/> Safety Joint 75	T-Open <u>13:05</u>
(D) Initial Shut-In <u>1213</u>	<input checked="" type="checkbox"/> Circ Sub <u>Dropped BAR 50</u>	T-Pulled <u>17:05</u>
(E) Second Initial Flow <u>284</u>	<input type="checkbox"/> Hourly Standby	T-Out <u>19:37</u>
(F) Second Final Flow <u>490</u>	<input checked="" type="checkbox"/> Mileage <u>90 RT</u> 139.50	Comments _____
(G) Final Shut-In <u>1178</u>	<input type="checkbox"/> Sampler	
(H) Final Hydrostatic <u>1959</u>	<input type="checkbox"/> Straddle	<input type="checkbox"/> Ruined Shale Packer

Initial Open 30 Extra Packer _____ Extra Copies _____
 Initial Shut-In 60 Extra Recorder _____ Sub Total 0
 Final Flow 60 Day Standby _____ Total 1764.50
 Final Shut-In 90 Accessibility _____ MP/DST Disc't _____
 Sub Total 1764.50

Approved By _____ Our Representative Mike Robert

TriLOBITE Testing Inc. shall not be liable for damaged of any kind of the property or personnel of the one for whom a test is made, or for any loss suffered or sustained, directly or indirectly, through the use of its equipment, or its statements or opinion concerning the results of any test, tools lost or damaged in the hole shall be paid for at cost by the party for whom the test is made.



TRILOBITE TESTING INC.

1515 Commerce Parkway • Hays, Kansas 67601

Test Ticket

NO. 49858

Well Name & No. Zerr 1-1 Test No. 2 Date 10-29-12
 Company Brito Oil Company Inc. Elevation 3048 KB 3038 GL
 Address 1700 N. Waterfront Pkwy Bldg. 300 Suite C Wichita KS 67206
 Co. Rep / Geo. PAT Deenihan Rig Murkin 21
 Location: Sec. 1 Twp. 12 Rge. 33 Co. Logan State KS

Interval Tested 4150 - 4205 Zone Tested H+I
 Anchor Length 49' Drill Pipe Run 3867 Mud Wt. 9.3
 Top Packer Depth 4152 Drill Collars Run 299 Vis 51
 Bottom Packer Depth 4156 Wt. Pipe Run 4 WL 6.4
 Total Depth 4205 Chlorides 5000 ppm System LCM 1

Blow Description IF: BOB in 9 min
IS: No Return Blow
FF: BOB in 8 min
FS: Return Blow Built to 8"

Rec	Feet of	%gas	%oil	%water	%mud
<u>0</u>	<u>Feet of GIP = 620'</u>	<u>620</u>			
<u>434</u>	<u>Feet of mego</u>	<u>30</u>	<u>70</u>		
<u>239</u>	<u>Feet of mego</u>	<u>20</u>	<u>20</u>		<u>10</u>
<u>60</u>	<u>Feet of meog</u>	<u>40</u>	<u>30</u>		<u>30</u>
Rec	Feet of	%gas	%oil	%water	%mud

Rec Total 733 BHT 122 Gravity 30 API RW - @ - ° F Chlorides - ppm

(A) Initial Hydrostatic 2117 Test 1250 T-On Location 08:45
 (B) First Initial Flow 25 Jars T-Started 09:32
 (C) First Final Flow 147 Safety Joint T-Open 11:18
 (D) Initial Shut-In 1328 Circ Sub T-Pulled 14:48
 (E) Second Initial Flow 160 Hourly Standby T-Out 17:16
 (F) Second Final Flow 247 Mileage 90 RT 139.50
 (G) Final Shut-In 1318 Sampler
 (H) Final Hydrostatic 1992 Straddle Ruined Shale Packer

Initial Open 30 Extra Packer Extra Copies
 Initial Shut-In 45 Extra Recorder Sub Total 0
 Final Flow 45 Day Standby Total 1389.50
 Final Shut-In 90 Accessibility MP/DST Disc't
 Sub Total 1389.50

Approved By _____ Our Representative Mick Roberts

Trilobite Testing Inc. shall not be liable for damaged of any kind of the property or personnel of the one for whom a test is made, or for any loss suffered or sustained, directly or indirectly, through the use of its equipment, or its statements or opinion concerning the results of any test, tools lost or damaged in the hole shall be paid for at cost by the party for whom the test is made.



TRILOBITE TESTING INC.

1515 Commerce Parkway • Hays, Kansas 67601

Test Ticket

NO. 49859

Well Name & No. Zerr 1-1 Test No. 3 Date 10-30-12
 Company Brito Oil Company Inc Elevation 3048 KB 3038 GL
 Address 1700 N WATERFRONT PKWY Bldg 300 Suite C Wichita KS 67206
 Co. Rep / Geo. PAT DEENIHAN Rig MURFIN 21
 Location: Sec. 1 Twp. 12 Rge. 33 Co. LOGAN State KS

Interval Tested 4208-4234 Zone Tested J
 Anchor Length 26 Drill Pipe Run 3903 Mud Wt. 9.3
 Top Packer Depth 4204 Drill Collars Run 299 Vis 51
 Bottom Packer Depth 4208 Wt. Pipe Run Ø WL 6.4
 Total Depth 4234 Chlorides 5000 ppm System LCM 1

Blow Description IF:
IS: LOST CIRCULATION
FF:
FS:

Rec	Feet of	%gas	%oil	%water	%mud

Rec Total _____ BHT _____ Gravity _____ API RW _____ @ _____ °F Chlorides _____ ppm

(A) Initial Hydrostatic 2119 Test 1050 T-On Location 00:30
 (B) First Initial Flow 17 Jars T-Started 01:11
 (C) First Final Flow / Safety Joint T-Open 03:04
 (D) Initial Shut-In 18 Circ Sub NC T-Pulled 03:06
 (E) Second Initial Flow / Hourly Standby T-Out 05:19
 (F) Second Final Flow / Mileage 90 RT 139.50 Comments Pulled Test
 (G) Final Shut-In _____ Sampler off bottom, worked
 (H) Final Hydrostatic 2064 Straddle on getting circulation
 Shale Packer Ruined Shale Packer Back
 Extra Packer Ruined Packer NO SUCCESS
 Initial Open _____ Extra Recorder Extra Copies
 Initial Shut-In _____ Day Standby Sub Total 0
 Final Flow _____ Accessibility Total 1189.50
 Final Shut-In _____ Sub Total 1189.50 MP/DST Disc't

Approved By _____ Our Representative Mike Roberts

Trilobite Testing Inc. shall not be liable for damaged of any kind of the property or personnel of the one for whom a test is made, or for any loss suffered or sustained, directly or indirectly, through the use of its equipment, or its statements or opinion concerning the results of any test, tools lost or damaged in the hole shall be paid for at cost by the party for whom the test is made.



TRILOBITE TESTING INC.

1515 Commerce Parkway • Hays, Kansas 67601

Test Ticket

NO. 49860

Well Name & No. Zerc 1-1 Test No. 4 Date 10-30-12
 Company Brito Oil Company Inc. Elevation 3048 KB 3038 GL
 Address 1700 N. Waterfront Pkwy Bldg 300 Suite C Wichita KS 67206
 Co. Rep / Geo. PAT Deenihan Rig Murfin 21
 Location: Sec. 1 Twp. 12 Rge. 33 Co. Logan State KS

Interval Tested 4208-4234 Zone Tested J
 Anchor Length 26' Drill Pipe Run 3903 Mud Wt. 9.0
 Top Packer Depth 4204 Drill Collars Run 299 Vis 56
 Bottom Packer Depth 4208 Wt. Pipe Run Ø WL 7.2
 Total Depth 4234 Chlorides 2000 ppm System LCM 8
 Blow Description IF: Built to 3/4"
IS: No Return Blow
FF: BOB in 22 Min
FS: No Return Blow

Rec	Feet of	%gas	%oil	%water	%mud
<u>30</u>	<u>Feet of Free oil</u>				
<u>120</u>	<u>Feet of mcgo</u>	<u>15</u>	<u>70</u>	<u>15</u>	
Rec	Feet of	%gas	%oil	%water	%mud
Rec	Feet of	%gas	%oil	%water	%mud
Rec	Feet of	%gas	%oil	%water	%mud

Rec Total 150 BHT 112 Gravity 32 API RW ✓ @ ✓ °F Chlorides ✓ ppm

(A) Initial Hydrostatic 2058 Test 1250 T-On Location 11:30
 (B) First Initial Flow 15 Jars T-Started 12:05
 (C) First Final Flow 30 Safety Joint T-Open 13:45
 (D) Initial Shut-In 1234 Circ Sub NC T-Pulled 17:30
 (E) Second Initial Flow 44 Hourly Standby T-Out 19:08
 (F) Second Final Flow 54 Mileage 90 RT 139.50 Comments _____
 (G) Final Shut-In 1264 Sampler _____
 (H) Final Hydrostatic 1965 Straddle _____ Ruined Shale Packer _____
 Shale Packer _____ Ruined Packer _____
 Extra Packer _____ Extra Copies _____
 Initial Open 30 Extra Recorder _____ Sub Total 0
 Initial Shut-In 45 Day Standby _____ Total 1389.50
 Final Flow 60 Accessibility _____ MP/DST Disc't _____
 Final Shut-In 90 Sub Total 1389.50

Approved By _____ Our Representative Mike Roberts
 TriLOBITE Testing Inc. shall not be liable for damaged of any kind of the property or personnel of the one for whom a test is made, or for any loss suffered or sustained, directly or indirectly, through the use of its equipment, or its statements or opinion concerning the results of any test, tools lost or damaged in the hole shall be paid for at cost by the party for whom the test is made.



TRILOBITE TESTING INC.

1515 Commerce Parkway • Hays, Kansas 67601

Test Ticket

NO. 49861

Well Name & No. Zerr 1-1 Test No. 5 Date 10-31-12
 Company Brito Oil Company Inc. Elevation 3048 KB 3038 GL
 Address 1700 N WATERFRONT Pkwy Bldg 300 Suite C Wichita KS 67206
 Co. Rep / Geo. PAT Deenihan Rig Martin 21
 Location: Sec. 1 Twp. 12 Rge. 33 Co. Logan State KS

Interval Tested 4235-4265 Zone Tested K
 Anchor Length 30 Drill Pipe Run 3931 Mud Wt. 9.0
 Top Packer Depth 4231 Drill Collars Run 299 Vis 56
 Bottom Packer Depth 4235 Wt. Pipe Run 4 WL 7.2
 Total Depth 4265 Chlorides 2000 ppm System LCM 8
 Blow Description IF: Built to 7" Blow
IS: No Return Blow
FF: Built to 8" Blow
FS: No Return Blow

Rec	Feet of	%gas	%oil	%water	%mud
<u>30</u>	<u>Feet of MCO</u>	<u>95</u>		<u>5</u>	
<u>120</u>	<u>Feet of MUD with oil spots</u>			<u>100</u>	
<u>180</u>	<u>Feet of MCO OCLWM</u>	<u>2</u>	<u>20</u>	<u>78</u>	

Rec Total 330 BHT 118 Gravity 34 API RW 215 @ 65 °F Chlorides 28000 ppm

(A) Initial Hydrostatic <u>2169</u>	<input checked="" type="checkbox"/> Test <u>1250</u>	T-On Location <u>03:00</u>
(B) First Initial Flow <u>15</u>	<input type="checkbox"/> Jars	T-Started <u>03:42</u>
(C) First Final Flow <u>92</u>	<input type="checkbox"/> Safety Joint	T-Open <u>05:30</u>
(D) Initial Shut-In <u>1273</u>	<input checked="" type="checkbox"/> Circ Sub <u>NC</u>	T-Pulled <u>08:30</u>
(E) Second Initial Flow <u>97</u>	<input type="checkbox"/> Hourly Standby	T-Out <u>10:39</u>
(F) Second Final Flow <u>157</u>	<input checked="" type="checkbox"/> Mileage <u>90 RT</u> 139.50	Comments
(G) Final Shut-In <u>1268</u>	<input type="checkbox"/> Sampler	
(H) Final Hydrostatic <u>1985</u>	<input type="checkbox"/> Straddle	<input type="checkbox"/> Ruined Shale Packer
	<input type="checkbox"/> Shale Packer	<input type="checkbox"/> Ruined Packer
Initial Open <u>30</u>	<input type="checkbox"/> Extra Packer	<input type="checkbox"/> Extra Copies
Initial Shut-In <u>45</u>	<input type="checkbox"/> Extra Recorder	Sub Total <u>0</u>
Final Flow <u>45</u>	<input type="checkbox"/> Day Standby	Total <u>1389.50</u>
Final Shut-In <u>60</u>	<input type="checkbox"/> Accessibility	MP/DST Disc't
	Sub Total <u>1389.50</u>	

Approved By _____ Our Representative Mike Robert

Trilobite Testing Inc. shall not be liable for damaged of any kind of the property or personnel of the one for whom a test is made, or for any loss suffered or sustained, directly or indirectly, through the use of its equipment, or its statements or opinion concerning the results of any test, tools lost or damaged in the hole shall be paid for at cost by the party for whom the test is made.



TRILOBITE TESTING INC.

1515 Commerce Parkway • Hays, Kansas 67601

Test Ticket 31

NO. 49862

Well Name & No. Zerr 1-1 Test No. 4 Date 10-31-12
 Company Brito Oil Company Inc Elevation 3049 KB 3038 GL
 Address 1700 N Waterfront Pkwy Bldg 300 suite C Wichita KS 67204
 Co. Rep / Geo. PAT Deenihan Rig Murfin 21
 Location: Sec. 1 Twp. 12 Rge. 33 Co. Logan State KS

Interval Tested 4274-4308 Zone Tested L
 Anchor Length 34 Drill Pipe Run 3960 Mud Wt. 9.1
 Top Packer Depth 4270 Drill Collars Run 299 Vis 54
 Bottom Packer Depth 4274 Wt. Pipe Run Ø WL 7.4
 Total Depth 4308 Chlorides 3000 ppm System LCM 5
 Blow Description IF: Weak Surface Blow Died in 8 MIN
IS: NO Return Blow
FF: NO Blow
FS: NO Return Blow

Rec	Feet of	%gas	%oil	%water	%mud
<u>2</u>	<u>mud</u>			<u>100</u>	
Rec	Feet of	%gas	%oil	%water	%mud
Rec	Feet of	%gas	%oil	%water	%mud
Rec	Feet of	%gas	%oil	%water	%mud
Rec	Feet of	%gas	%oil	%water	%mud

Rec Total 2 BHT 119 Gravity — API RW — @ — °F Chlorides — ppm

(A) Initial Hydrostatic <u>2204</u>	<input checked="" type="checkbox"/> Test <u>1250</u>	T-On Location <u>18:00</u>
(B) First Initial Flow <u>15</u>	<input type="checkbox"/> Jars	T-Started <u>18:30</u>
(C) First Final Flow <u>18</u>	<input type="checkbox"/> Safety Joint	T-Open <u>20:40</u>
(D) Initial Shut-In <u>21</u>	<input checked="" type="checkbox"/> Circ Sub <u>NC</u>	T-Pulled <u>22:40</u>
(E) Second Initial Flow <u>16</u>	<input type="checkbox"/> Hourly Standby	T-Out <u>00:27</u>
(F) Second Final Flow <u>16</u>	<input checked="" type="checkbox"/> Mileage <u>90RT</u> 139.50	Comments
(G) Final Shut-In <u>19</u>	<input type="checkbox"/> Sampler	
(H) Final Hydrostatic <u>2044</u>	<input type="checkbox"/> Straddle	<input type="checkbox"/> Ruined Shale Packer
	<input type="checkbox"/> Shale Packer	<input type="checkbox"/> Ruined Packer
Initial Open <u>30</u>	<input type="checkbox"/> Extra Packer	<input type="checkbox"/> Extra Copies
Initial Shut-In <u>30</u>	<input type="checkbox"/> Extra Recorder	Sub Total <u>0</u>
Final Flow <u>30</u>	<input type="checkbox"/> Day Standby	Total <u>1389.50</u>
Final Shut-In <u>30</u>	<input type="checkbox"/> Accessibility	MP/DST Disc't
	Sub Total <u>1389.50</u>	

Approved By _____ Our Representative Mike Roberts

Trilobite Testing Inc. shall not be liable for damaged of any kind of the property or personnel of the one for whom a test is made, or for any loss suffered or sustained, directly or indirectly, through the use of its equipment, or its statements or opinion concerning the results of any test, tools lost or damaged in the hole shall be paid for at cost by the party for whom the test is made.



TRILOBITE TESTING INC.

1515 Commerce Parkway • Hays, Kansas 67601

Test Ticket 11-1-12
11-2-12

NO. 49863

Well Name & No. Zerr 1-1 Test No. 7 Date 11-1-12
 Company Brito Oil Company Inc Elevation 3049 KB 3038 GL
 Address 1700 N Waterfront Pkwy Bldg 300 Suite C Wichita KS 67206
 Co. Rep / Geo. PAT Deenihan Rig Murfin 21
 Location: Sec. 1 Twp. 12 Rge. 33 Co. Logan State KS

Interval Tested 4431-4453 Zone Tested Pawnee
 Anchor Length 22 Drill Pipe Run 4123 Mud Wt. 9.3
 Top Packer Depth 4427 Drill Collars Run 299 Vis 61
 Bottom Packer Depth 4431 Wt. Pipe Run 0 WL 9.2
 Total Depth 4453 Chlorides 3000 ppm System LCM 6
 Blow Description IF: Weak Blow Died in 1 Min
FS: NO Return Blow
FF: No Blow
FS: No Return Blow

Rec	Feet of	%gas	%oil	%water	%mud
<u>3</u>	<u>mud with oil spots</u>			<u>100</u>	
Rec	Feet of	%gas	%oil	%water	%mud
Rec	Feet of	%gas	%oil	%water	%mud
Rec	Feet of	%gas	%oil	%water	%mud
Rec	Feet of	%gas	%oil	%water	%mud

Rec Total 3 BHT 118 Gravity _____ API RW _____ @ _____ °F Chlorides _____ ppm

(A) Initial Hydrostatic ~~2406~~ 2406 Test 1250 T-On Location 20:15
 (B) First Initial Flow 15 Jars _____ T-Started 20:21
 (C) First Final Flow 18 Safety Joint _____ T-Open 22:05
 (D) Initial Shut-In 1009 Circ Sub NC T-Pulled 00:05
 (E) Second Initial Flow 19 Hourly Standby _____ T-Out 01:48
 (F) Second Final Flow 22 Mileage 90 RT 139.50 Comments _____
 (G) Final Shut-In 929 Sampler _____
 (H) Final Hydrostatic 2288 Straddle _____ Ruined Shale Packer _____
 Shale Packer _____ Ruined Packer _____
 Extra Packer _____ Extra Copies _____
 Initial Open 30 Extra Recorder _____ Sub Total 0
 Initial Shut-In 30 Day Standby _____ Total 1389.50
 Final Flow 30 Accessibility _____ MP/DST Disc't _____
 Final Shut-In 30 _____
 Sub Total 1389.50

Approved By _____ Our Representative Mike Roberts

Trilobite Testing Inc. shall not be liable for damaged of any kind of the property or personnel of the one for whom a test is made, or for any loss suffered or sustained, directly or indirectly, through the use of its equipment, or its statements or opinion concerning the results of any test, tools lost or damaged in the hole shall be paid for at cost by the party for whom the test is made.



TRILOBITE TESTING INC.

1515 Commerce Parkway • Hays, Kansas 67601

Test Ticket

NO. 49864

Well Name & No. Zerr 1-1 Test No. 8 Date 11-2-12
 Company Brito Oil Company Inc. Elevation 3049 KB 3038 GL
 Address 1700 N. Waterfront Pkwy Bldg. 300 Suite C Wichita KS 67206
 Co. Rep / Geo. Pat Deenhan Rig Murfin 21
 Location: Sec. 1 Twp. 12 Rge. 33 Co. Logan State KS

Interval Tested 4542-4600 Zone Tested Johnson
 Anchor Length 58 Drill Pipe Run 4243 Mud Wt. 9.2
 Top Packer Depth 4838 Drill Collars Run 299 Vis 52
 Bottom Packer Depth 4542 Wt. Pipe Run 0 WL 8.0
 Total Depth 4600 Chlorides 3400 ppm System LCM 6
 Blow Description IF: Weak Surface Blow Died in 17 Min
IS: No Return Blow
FF: No Blow
FS: No Return Blow

Rec	Feet of	%gas	%oil	%water	%mud
<u>70</u>	<u>MUD with oil spots</u>			<u>100</u>	
Rec	Feet of	%gas	%oil	%water	%mud
Rec	Feet of	%gas	%oil	%water	%mud
Rec	Feet of	%gas	%oil	%water	%mud

Rec Total 70 BHT 120 Gravity / API RW / @ / ° F Chlorides / ppm

(A) Initial Hydrostatic <u>2282</u>	<input checked="" type="checkbox"/> Test <u>1250</u>	T-On Location <u>17:40</u>
(B) First Initial Flow <u>30</u>	<input type="checkbox"/> Jars	T-Started <u>18:11</u>
(C) First Final Flow <u>57</u>	<input type="checkbox"/> Safety Joint	T-Open <u>20:10</u>
(D) Initial Shut-In <u>1084</u>	<input checked="" type="checkbox"/> Circ Sub <u>NC</u>	T-Pulled <u>22:10</u>
(E) Second Initial Flow <u>60</u>	<input type="checkbox"/> Hourly Standby	T-Out <u>00:32</u>
(F) Second Final Flow <u>82</u>	<input checked="" type="checkbox"/> Mileage <u>90 RT</u> 139.50	Comments
(G) Final Shut-In <u>1063</u>	<input type="checkbox"/> Sampler	
(H) Final Hydrostatic <u>2177</u>	<input type="checkbox"/> Straddle	<input type="checkbox"/> Ruined Shale Packer
Initial Open <u>30</u>	<input type="checkbox"/> Shale Packer	<input type="checkbox"/> Ruined Packer
Initial Shut-In <u>30</u>	<input type="checkbox"/> Extra Packer	<input type="checkbox"/> Extra Copies
Final Flow <u>30</u>	<input type="checkbox"/> Extra Recorder	Sub Total <u>0</u>
Final Shut-In <u>30</u>	<input type="checkbox"/> Day Standby	Total <u>1389.50</u>
	<input type="checkbox"/> Accessibility	MP/DST Disc't
	Sub Total <u>1389.50</u>	

Approved By _____ Our Representative Alte Rotak

Trilobite Testing Inc. shall not be liable for damaged of any kind of the property or personnel of the one for whom a test is made, or for any loss suffered or sustained, directly or indirectly, through the use of its equipment, or its statements or opinion concerning the results of any test, tools lost or damaged in the hole shall be paid for at cost by the party for whom the test is made.