

TRIOBITE TESTING INC.

1515 Commerce Parkway • Hays, Kansas 67601

Test Ticket
NO. 51518

Well Name & No.	Marshall A #44
Company	E + B Natural Res. Management Corp
Address	1600 Deere Rd. Bakersfield, CA 93308
Co. Rep / Geo.	Bob O. Orell
Location: Sec.	31
	Twp. 11S
	Rge. 17W
	Co. Ellis
	State K
	Rig Muffin 1916
Test No.	2
Date	12-30-12
Elevation	2142
KB	2132
GL	

Interval Tested	Anchor Length	Top Packer Depth	Bottom Packer Depth	Total Depth	Blow Description
3486-3580	94	3481	3486	3580	75FP - 100 Blow
					75FP - Weak Blow Thru-out 1" Blow
					75FP - Weak Blow Thru-out 1/2" Blow
					75FP - No Blow

Rec	Feet of	%gas	%oil	%water
Rec	30	2	99	%mud
Rec				
Rec				
Rec				
Rec				

Rec Total	30	BHT	91	Gravity	API RW	@	F Chlorides	ppm
(A) Initial Hydrostatic	1699			<input checked="" type="checkbox"/> Test				
(B) First Initial Flow	17			<input checked="" type="checkbox"/> Jars				
(C) First Final Flow	20			<input checked="" type="checkbox"/> Safety Joint				
(D) Initial Shut-In	29			<input type="checkbox"/> Circ Sub				
(E) Second Initial Flow	21			<input type="checkbox"/> Hourly Standby				
(F) Second Final Flow	21			<input checked="" type="checkbox"/> Mileage				
(G) Final Shut-In	45			<input type="checkbox"/> Sampler				
(H) Final Hydrostatic	1669			<input type="checkbox"/> Straddle				
Initial Open	30			<input type="checkbox"/> Shale Packer				
Initial Shut-In	45			<input type="checkbox"/> Extra Packer				
Final Flow	60			<input type="checkbox"/> Extra Recorder				
Final Shut-In	60			<input type="checkbox"/> Day Standby				
Sub Total				<input type="checkbox"/> Accessibility				
MP/DST Disc't								

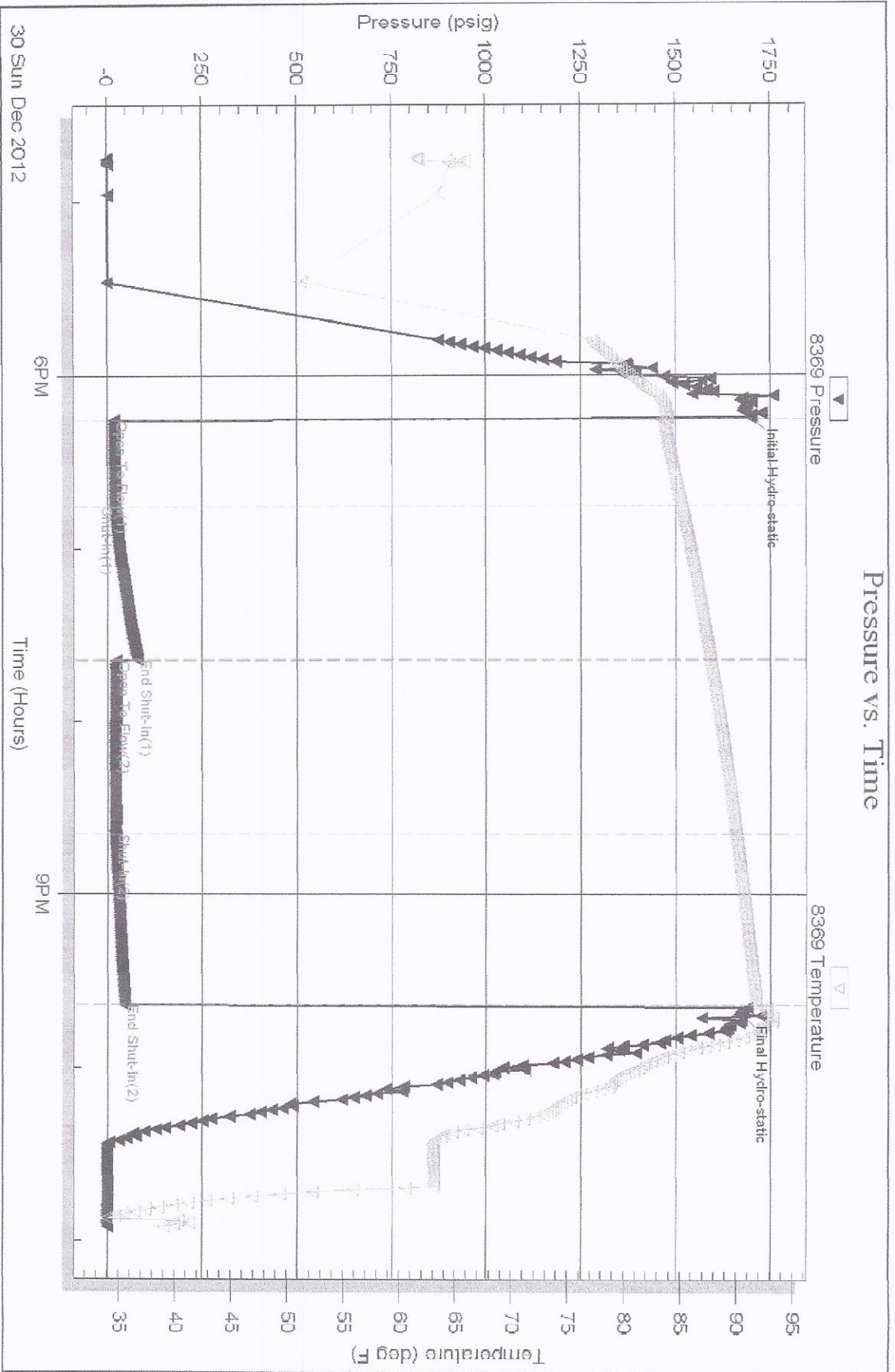
Our Representative Roy Schaeffer

Approved By Bob Orell

Thank you

Triobite Testing Inc. shall not be liable for damaged or any kind of the property or personnel of the party for whom a test is made, or for any loss suffered or sustained, directly or indirectly, through the use of its equipment, or its statements or opinion concerning the results of any test, tools lost or damaged in the hole shall be paid for at cost by the party for whom the test is made.

Pressure vs. Time



DRILL STEM TEST REPORT



E8B Natural Res. Management

1600 Norris Rd
Bakersfield CA 93308

ATTN: Keith Pickett

31-11s-17w Ellis

Marshall A#44

Job Ticket: 51518

Test Start: 2012.12.30 @ 16:45:29

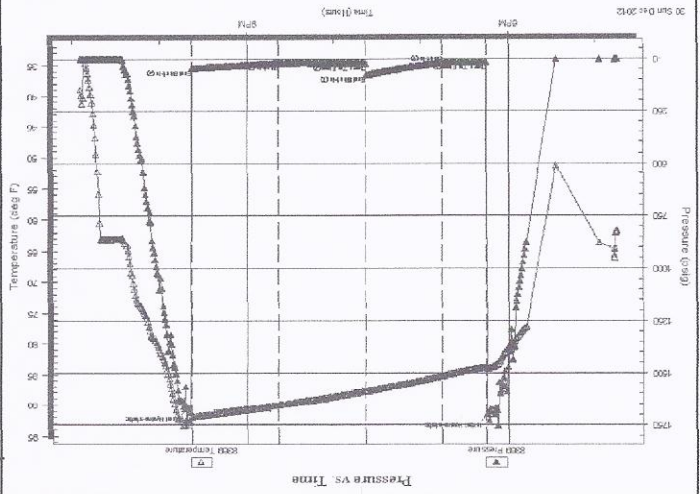
DST#: 2

GENERAL INFORMATION:

Formation: Lans H, J, K
 Deviated: No Whipstock:
 Time Tool Opened: 18:15:09
 Time Test Ended: 22:55:38
 Interval: 3486.00 ft (KB) To 3580.00 ft (KB) (TVD)
 Total Depth: 3580.00 ft (KB) (TVD)
 Hole Diameter: 7.85 inches Hole Condition: Fair
 Test Type: Conventional Bottom Hole (Reset)
 Tester: Ray Schwager
 Unit No: 42
 Reference Elevations: 2142.00 ft (KB)
 2137.00 ft (CF)
 5.00 ft
 KB to GR/CF:

Serial #: 8369 Inside
 Press@RunDepth: 21.23 psig @ 3491.00 ft (KB)
 Start Date: 2012.12.30 End Date: 2012.12.30
 Start Time: 16:45:29 End Time: 22:55:38
 Capacity: 8000.00 psig
 Last Callb.: 2012.12.30
 Time On Btm: 2012.12.30 @ 18:13:54
 Time Off Btm: 2012.12.30 @ 21:40:23

TEST COMMENT: 30-IFP-wk bi thru-out 1" bi
 45-ISIP-no bi
 60-FFP-wk bi thru-out 1/4" bi
 60-FSIP-no bi



Time (Min.)	Pressure (psig)	Temp (deg F)	Annotation
0	1699.58	83.91	Initial Hydro-static
2	17.84	83.46	Open To Flow (1)
32	20.82	85.18	Shut-in(1)
84	79.70	87.79	End Shut-in(1)
85	21.99	87.79	Open To Flow (2)
145	21.23	90.06	Shut-in(2)
204	45.07	91.86	End Shut-in(2)
207	1669.38	92.81	Final Hydro-static

PRESSURE SUMMARY

Length (ft)	Description	Volume (bbl)
30.00	SOCM 2% 0.98% M	0.42
Recovery from multiple tests		

Recovery

Gas Rate (Mcf/d)	Choke (Inches)	Pressure (psig)	Gas Rate (Mcf/d)

Gas Rates

Printed: 2012.12.30 @ 22:59:11

Ref. No: 51518

Triobite Testing, Inc



TRIOBITE TESTING INC.

1515 Commerce Parkway - Hays, Kansas 67601

Test Ticket
NO. 51519

Well Name & No.	MARSHALL A #44		
Company	E & B Natural Resources Management Corp		
Address	1600 Dorris Rd Bakersfield, CA 93308		
Co. Rep / Geo.	Bob D. Dell		
Location: Sec.	Twp. 31	Rge. 17W	Co. Ellis
Date	Test No. 3	Elevation 2142	KB 2137

Interval Tested	Anchor Length	Top Packer Depth	Bottom Packer Depth	Total Depth	Blow Description
3624-3663	39	3619	3624	3663	7STP - NO Blow
					IFP - Weak Blow 1/2" To 4 1/2" Blow
					7STP - Weak Blow 1/2" To 2" Blow
					FSIF - NO Blow

Rec	Feet of	%gas	%oil	%water
2	60	0	0	100
35	0CMW	5	89	25
60	50CMW	1	90	10
60	MW			

Rec Total	BHT	Gravity	API RW	F Chlorides
157	102		32 @ 60	24000 ppm

Rec Total	157	Test	<input checked="" type="checkbox"/>
(A) Initial Hydrostatic	1740	Jars	<input checked="" type="checkbox"/>
(B) First Initial Flow	19	Safety Joint	<input checked="" type="checkbox"/>
(C) First Final Flow	57	Circ Sub	<input type="checkbox"/>
(D) Initial Shut-In	151	Hourly Standby	<input type="checkbox"/>
(E) Second Initial Flow	57	Mileage	<input checked="" type="checkbox"/>
(F) Second Final Flow	90	Sampler	<input type="checkbox"/>
(G) Final Shut-In	153	Shale Packer	<input type="checkbox"/>
(H) Final Hydrostatic	1735	Extra Packer	<input type="checkbox"/>
Initial Open	30	Extra Recorder	<input type="checkbox"/>
Initial Shut-In	45	Day Standby	<input type="checkbox"/>
Final Flow	60	Accessibility	<input type="checkbox"/>
Final Shut-In	60	MP/DST Disc't	<input type="checkbox"/>

Sub Total _____

Approved By Bob Dell

Our Representative Ray Elinger

Trilobite Testing Inc. shall not be liable for damaged or any kind of the property or personnel of the one for whom a test is made, or for any loss suffered or sustained, directly or indirectly, through the use of its equipment, or its statements or opinion concerning the results of any test, tools lost or damaged in the hole shall be paid for at cost by the party for whom the test is made.

Thank you

Serial #: 8369

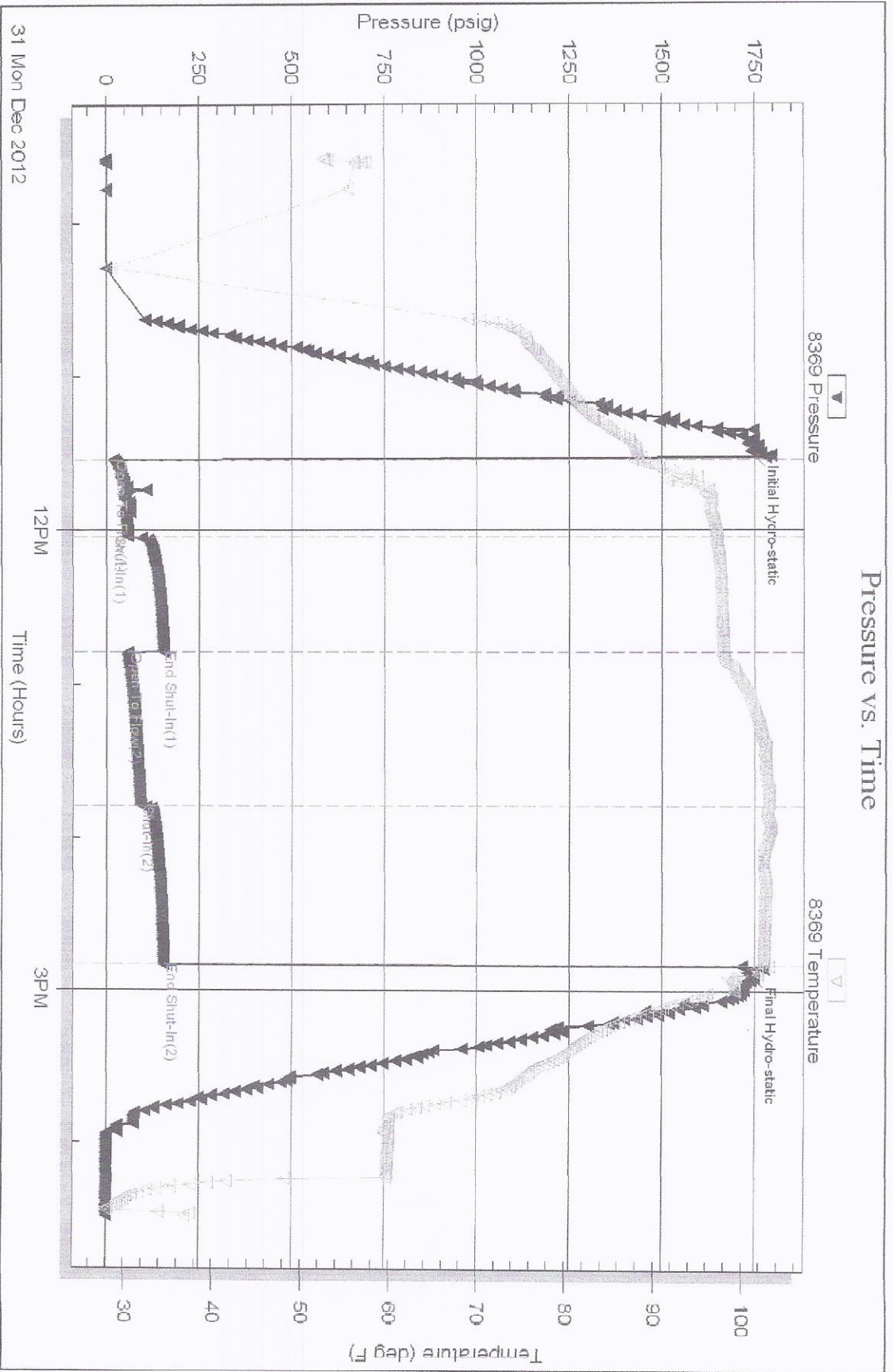
Inside

ESB Natural Res. Management

Marshall A#44

DST Test Number: 3

Pressure vs. Time



DRILL STEM TEST REPORT



E&B Natural Res. Management
 1600 Norris Rd
 Bakersfield CA 93308
 ATTN: Keith Pickett

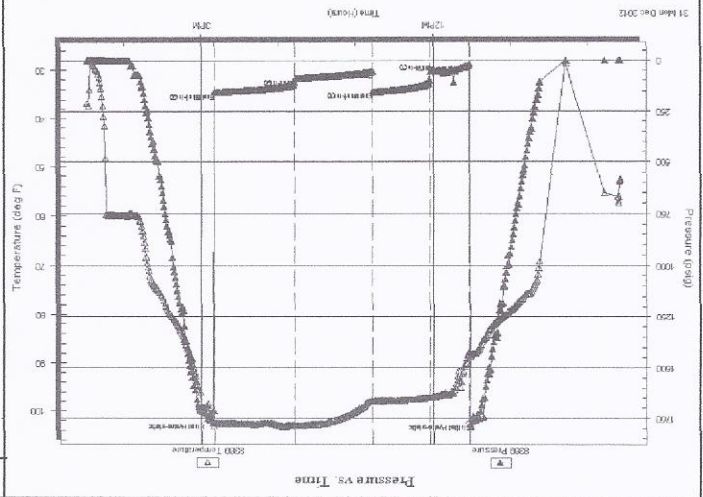
31-11s-17w Ellis
 Marshall A#44
 Job Ticket: 51519
 DST#:3
 Test Start: 2012.12.31 @ 09:35:16

GENERAL INFORMATION:

Formation: Arbuckle
 Deviated: No Whipstock:
 Time Tool Opened: 11:32:11
 Time Test Ended: 16:28:55
 Interval: 3624.00 ft (KB) To 3663.00 ft (KB) (TVD)
 Total Depth: 3663.00 ft (KB) (TVD)
 Hole Diameter: 7.85 inches Hole Condition: Fair
 Reference Elevations: 2142.00 ft (KB)
 2137.00 ft (CF)
 5.00 ft
 KB to GRVCF:
 Test Type: Conventional Bottom Hole (Reset)
 Tester: Ray Schwager
 Unit No: 42

Serial #: 8369
 Inside
 Press@RunDepth: 90.62 psig @ 3629.00 ft (KB)
 Start Date: 2012.12.31
 End Date: 2012.12.31
 Start Time: 09:35:16
 End Time: 16:28:55
 Last Callb.:
 Capacity: 8000.00 psig
 Time On Btm: 2012.12.31 @ 11:29:26
 Time Off Btm: 2012.12.31 @ 14:52:40

TEST COMMENT:
 30-IFP-wk to a fr bl 1/2" to 4 1/2" bl
 45-ISFP-no bl
 60-FFP-wk bl thru-out 1/2" to 2" bl
 60-FSP-no bl



Length (ft)	Description	Volume (bbl)
2.00	CO	0.03
35.00	OCMMW 5% O25% M70% W	0.49
60.00	SOCMMW 1% O10% M89% W	0.84
60.00	MW 10% M90% W	0.84

Recovery from multiple tests

Time (Min.)	Pressure (psig)	Temp (deg F)	Annotation
0	1740.38	88.08	Initial Hydro-static
3	19.55	87.63	Open To Flow (1)
33	57.98	97.25	Shut-in (1)
78	151.15	97.93	End Shut-in (1)
78	57.82	97.91	Open To Flow (2)
138	90.62	103.02	Shut-in (2)
201	153.60	102.53	End Shut-in (2)
204	1735.10	101.82	Final Hydro-static

PRESSURE SUMMARY			
Time (Min.)	Pressure (psig)	Temp (deg F)	Annotation
0	1740.38	88.08	Initial Hydro-static
3	19.55	87.63	Open To Flow (1)
33	57.98	97.25	Shut-in (1)
78	151.15	97.93	End Shut-in (1)
78	57.82	97.91	Open To Flow (2)
138	90.62	103.02	Shut-in (2)
201	153.60	102.53	End Shut-in (2)
204	1735.10	101.82	Final Hydro-static

GAS RATES			
Gas Rate (Mcf/d)	Pressure (psig)	Choke (Inches)	Gas Rate (Mcf/d)



TRILOBITE TESTING INC.

1515 Commerce Parkway • Hays, Kansas 67601

Test Ticket
NO. 51520

Well Name & No.	Marshall A # 44		
Test No.	4		
Date	12-31-12		
Company	E & B Well Services Management Corp		
Address	1600 Moore Rd. Bartlesfield, CA 93308		
Co. Rep / Geo.	Bob O'Dell		
Location: Sec.	Twp.	Rge.	Co.
31	11 ^s	17 ^w	Ellis
State	K		

Interval Tested	Anchor Length	Top Packer Depth	Bottom Packer Depth	Total Depth	Blow Description
3664-3679	15	3659	3664	3679	T.P. - Strong Blow then out
					T.S.P. - NO Blow
					F.P. - Strong Blow in 4 min
					F.S.P. - NO Blow

Rec	Feet of	% gas	% oil	% water
90	DC MW	5	85	10
240	500 W	1		99
1800	WATER			
Rec	Feet of	% gas	% oil	% water
Rec	Feet of	% gas	% oil	% water
Rec	Feet of	% gas	% oil	% water

Rec Total	BHT	Gravity	API RW	F Chlorides
2130	110	—	26 @ 65	2800 ppm

(A) Initial Hydrostatic	(B) First Initial Flow	(C) First Final Flow	(D) Initial Shut-In	(E) Second Initial Flow	(F) Second Final Flow	(G) Final Shut-In	(H) Final Hydrostatic
1754	186	883	1022	883	1022	1023	1750
30	45	30	45	30	45	45	45

T-On Location	T-Started	T-Open	T-Pulled	T-Out
2215	2245	0030	0300	0556

- Test
- Jars
- Safety Joint
- Circ Sub
- Hourly Standby
- Mileage
- Sampler
- Straddle
- Shale Packer
- Extra Packer
- Extra Recorder
- Day Standby
- Accessibility

MP/DST Disc _____
 Total _____
 Sub Total _____
 Extra Copies _____
 Ruined Packer _____
 Ruined Shale Packer _____

Approved By: Bob O'Dell
 Our Representative: Ray Selinger
 Thank you

TRILOBITE TESTING INC. shall not be liable for damaged or lost or damaged in the hole shall be paid for at cost by the party for whom the test is made. Equipment, or its statements or opinion concerning the results of any test, tools lost or damaged in the hole shall be paid for at cost by the party for whom the test is made.

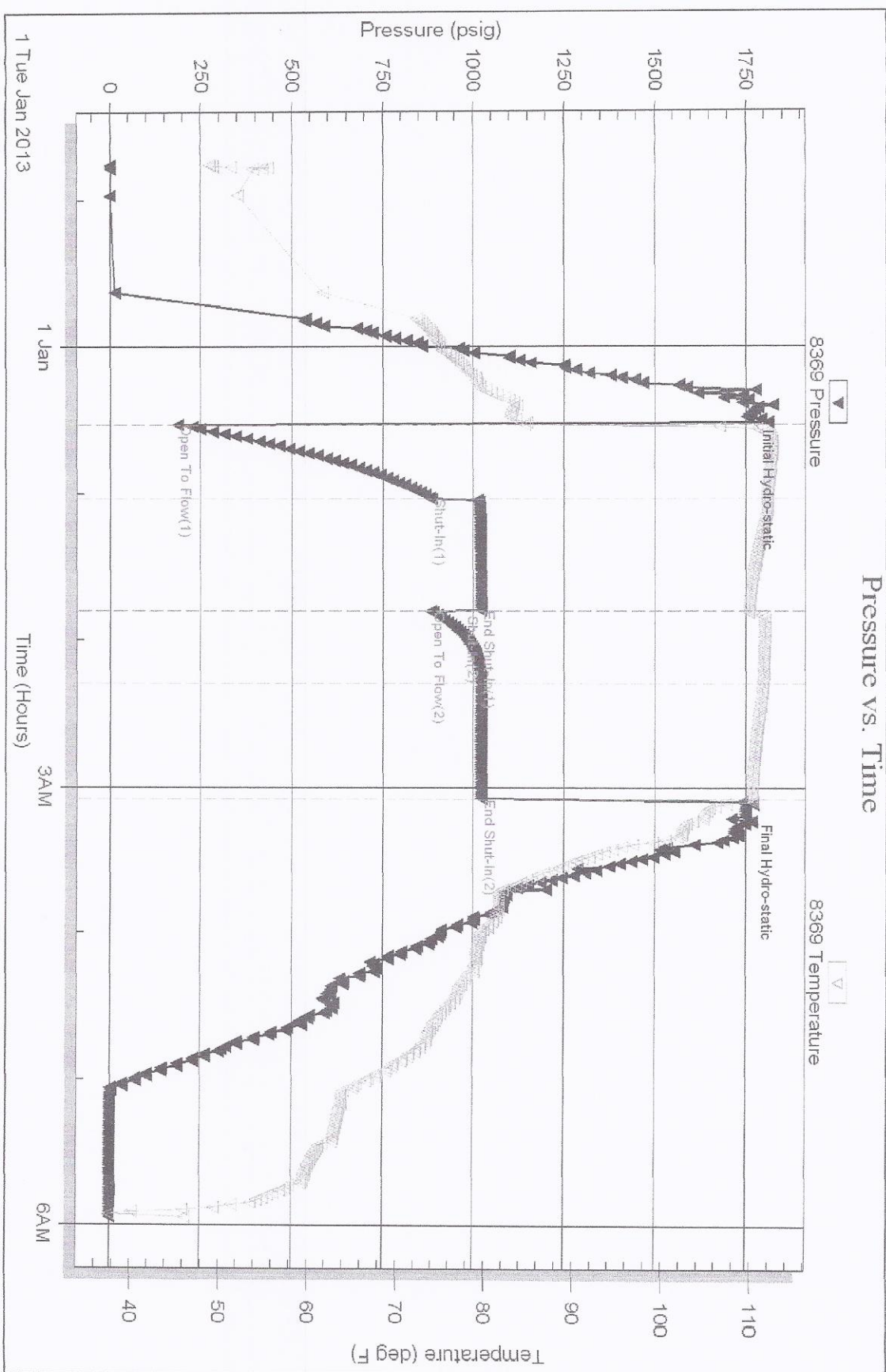
Serial #: 8369

Inside

E8B Natural Res. Management

Marshall A#44

DST Test Number: 4



DRILL STEM TEST REPORT



E&B Natural Res. Management
 1600 Norris Rd
 Bakersfield CA 93308
 ATTN: Keith Pickett

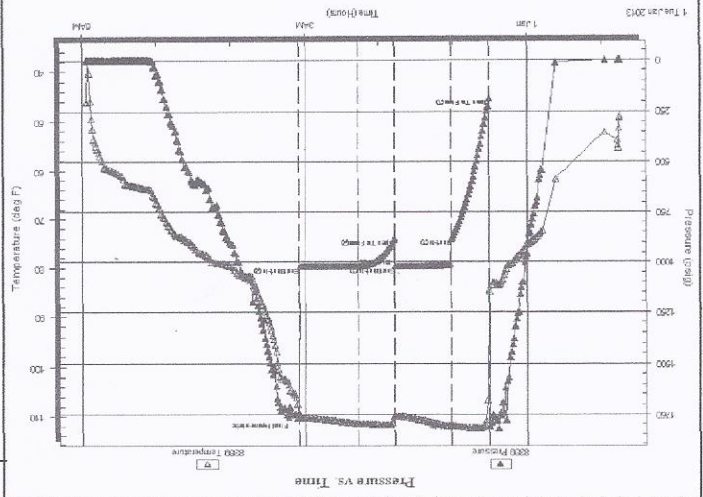
31-11s-17w Ellis
 Marshall A#44
 Job Ticket: 51520
 DST#: 4
 Test Start: 2012.12.31 @ 22:45:46

GENERAL INFORMATION:

Formation: Arbuckle
 Deviated: No
 Whipstock: No
 Test Type: Conventional Bottom Hole (Reset)
 Tester: Ray Schwager
 Unit No: 42
 Interval: 3664.00 ft (KB) To 3679.00 ft (KB) (TVD)
 Total Depth: 3679.00 ft (KB) (TVD)
 Hole Diameter: 7.85 inches Hole Condition: Fair
 Reference Elevations: 2142.00 ft (KB)
 2137.00 ft (CF)
 5.00 ft
 Capacity: 8000.00 psig

Serial #: 8369
 Inside
 Press@RunDepth: 1022.12 psig @ 3665.00 ft (KB)
 Start Date: 2012.12.31
 End Date: 2013.01.01
 Last Callb.: 2013.01.01
 Time On Btm: 2013.01.01 @ 00:28:26
 Time Off Btm: 2013.01.01 @ 03:09:10

TEST COMMENT: 30-FP-strg bl thru-out
 45-ISP-no bl
 30-FFP-strg bl in 4 min
 45-FSP-no bl



PRESSURE SUMMARY

Time (Min.)	Pressure (psig)	Temp (deg F)	Annotation
0	1754.44	82.95	Initial Hydro-static
3	186.39	84.58	Open To Flow (1)
34	883.94	111.88	Shut-in(1)
80	1022.71	109.84	End Shut-in(1)
80	883.21	109.78	Open To Flow (2)
109	1022.12	111.43	Shut-in(2)
157	1023.39	110.18	End Shut-in(2)
161	1750.63	105.15	Final Hydro-static

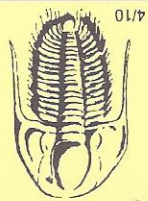
Gas Rates

Choke (Inches)	Pressure (psig)	Gas Rate (Mcf/d)

Recovery

Length (ft)	Description	Volume (bbl)
90.00	OCMW 5% O10% M85% W	1.26
240.00	SOCW 1% O99% W	3.37
1800.00	Water	25.25

* Recovery from multiple tests



TRILOBITE TESTING INC.

1515 Commerce Parkway • Hays, Kansas 67601

Test Ticket
NO. 51521

Well Name & No.	Marshall A # 44	Test No.	5	Date	1-1-13
Company	Earth Natural Res Management Corp	Elevation	2142	KB	2132
Address	1600 Webers Rd, Bakersfield, CA, 93308	Co. Rep / Geo.	Bob D. Dell	Rig	Murphy rig 16
Location: Sec.	31	Twp.	11 S	Rge.	17 W
Location: Co.	Ellis	State	K		

Interval Tested	3680 - 3691	Zone Tested	Arbuckle
Anchor Length	11	Drill Pipe Run	3677
Top Packer Depth	3675	Drill Collars Run	-
Bottom Packer Depth	3680	Wt. Pipe Run	-
Total Depth	3691	Chlorides ppm System	5700
Blow Description	IFP - Strong Blow then out 2STP - NO Blow FFP - Weak to Fair Blow 1/2" Toy Blow FFIF - NO Blow		

Rec	Feet of	%gas	%oil	%water	%mud
Rec 2170	Feet of WATER				
Rec	Feet of	%gas	%oil	%water	%mud
Rec	Feet of	%gas	%oil	%water	%mud
Rec	Feet of	%gas	%oil	%water	%mud
Rec	Feet of	%gas	%oil	%water	%mud

Rec Total	2170	BHT	109	Gravity	-	API RW	.26 @ 70	F Chlorides	25000	ppm																			
(A) Initial Hydrostatic	1757	Test	<input checked="" type="checkbox"/>	Jars	<input checked="" type="checkbox"/>	Safety joint	<input checked="" type="checkbox"/>	Circ Sub	<input type="checkbox"/>	Hourly Standby	<input type="checkbox"/>	Mileage	<input checked="" type="checkbox"/>	Sampler	<input type="checkbox"/>	Straddle	<input type="checkbox"/>	Shale Packer	<input type="checkbox"/>	Extra Packer	<input type="checkbox"/>	Extra Recorder	<input type="checkbox"/>	Day Standby	<input type="checkbox"/>	Accessibility	<input type="checkbox"/>	Sub Total	

Initial Open	30	Initial Shut-In	45	Final Flow	30	Final Shut-In	45								
(H) Final Hydrostatic	1753	(G) Final Shut-In	1031	(F) Second Final Flow	1031	(E) Second Initial Flow	1026	(D) Initial Shut-In	1026	(C) First Final Flow	1028	(B) First Initial Flow	778	(A) Initial Hydrostatic	1757

Approved By Ray Schwager
Our Representative

MP/DST Disc't _____
Total _____
Sub Total _____
Extra Copies _____
Ruined Packer _____
Ruined Shale Packer _____

T-On Location 1120
T-Started 1225
T-Open 1405
T-Pulled 1635
T-Out 1915

Comments _____

Approved By _____
Our Representative _____

Trilobite Testing Inc. shall not be liable for damaged or lost or damaged in the hole shall be paid for at cost by the party for whom the test is made. Equipment, or its statements or opinion concerning the results of any test, tools lost or damaged in the hole shall be paid for at cost by the party for whom the test is made.

Serial #: 8369

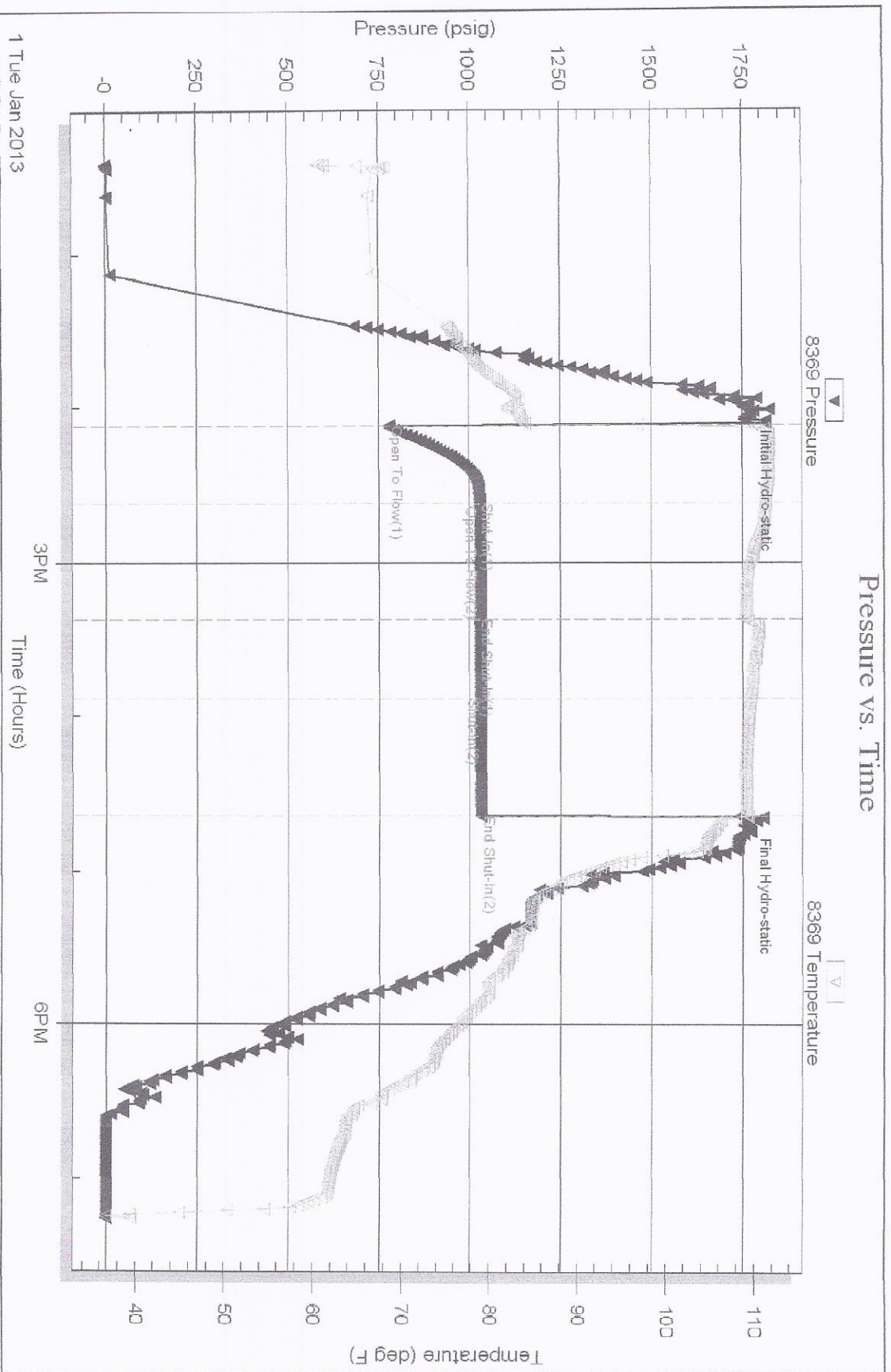
Inside

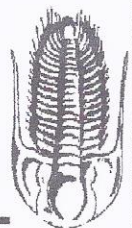
ESB Natural Res. Management

Marshall A444

DST Test Number: 5

Pressure vs. Time





TRIOBITE TESTING, INC.

E&B Natural Res. Management
 1600 Norris Rd
 Bakerfield CA 93308
 ATTN: Keith Pickett

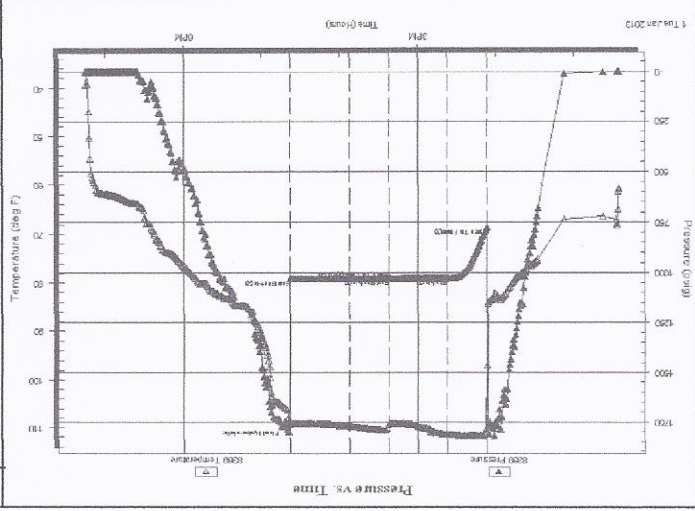
31-11s-17w Ellis
 Marshall A#44
 Job Ticket: 51521
 DST#: 5
 Test Start: 2013.01.01 @ 12:25:56

DRILL STEM TEST REPORT

GENERAL INFORMATION:

Formation: Arbuckle
 Deviated: No Whipstock:
 Time Tool Opened: 14:07:06
 Time Test Ended: 19:15:50
 Interval: 3680.00 ft (KB) To 3691.00 ft (KB) (TVD)
 Total Depth: 3691.00 ft (KB) (TVD)
 Hole Diameter: 7.85 inchesHole Condition: Fair
 Reference Elevations: 2142.00 ft (KB)
 2137.00 ft (CF)
 5.00 ft
 KB to GR/CF:

Serial #: 8369 Inside
 Press@RunDepth: 1031.51 psig @ 3681.00 ft (KB)
 Start Date: 2013.01.01 End Date: 2013.01.01
 Start Time: 12:25:56 End Time: 19:15:50
 TEST COMMENT: 30-FP-stry bl thru-out
 45-ISIP-no bl
 30-FP-wk to a fr bl 1/2" to 4" bl
 45-FSIP-no bl



PRESSURE SUMMARY

Time (Min.)	Pressure (psig)	Temp (deg F)	Annotation
0	1757.36	83.67	Initial Hydro-static
3	778.67	96.93	Open To Flow (1)
33	1028.83	111.32	Shut-in(1)
78	1026.18	108.93	End Shut-in(1)
78	1026.43	108.97	Open To Flow (2)
109	1031.51	109.60	Shut-in(2)
154	1031.09	109.13	End Shut-in(2)
158	1753.76	105.90	Final Hydro-static

Gas Rates

Choke (Inches)	Pressure (psig)	Gas Rate (Mcf/d)

Recovery

Length (ft)	Description	Volume (bbl)
2170.00	Water	30.44
* Recovery from multiple tests		