



TRILOBITE TESTING, INC.

DRILL STEM TEST REPORT

Woolsey Operating Co LLC

26 31s 17w Comanche

125 N Market Ste 1000
Wichita KS 67202-1729

Betty B Yost GU-B #2

ATTN: Scott Alberg

Job Ticket: 48635

DST#: 1

Test Start: 2012.10.29 @ 20:50:00

GENERAL INFORMATION:

Formation: **Miss**

Deviated: No Whipstock: 1983.00 ft (KB)

Time Tool Opened: 23:39:00

Time Test Ended: 07:06:00

Test Type: Conventional Bottom Hole (Initial)

Tester: Jim Svaty

Unit No: 41

Interval: 4855.00 ft (KB) To 4928.00 ft (KB) (TVD)

Reference Elevations: 1983.00 ft (KB)

Total Depth: 4928.00 ft (KB) (TVD)

1970.00 ft (CF)

Hole Diameter: 7.88 inches Hole Condition: Fair

KB to GR/CF: 13.00 ft

Serial #: 6752 Inside

Press @ Run Depth: 38.73 psig @ 4862.00 ft (KB)

Capacity: 8000.00 psig

Start Date: 2012.10.29

End Date:

2012.10.30

Last Calib.: 2012.10.30

Start Time: 20:50:01

End Time:

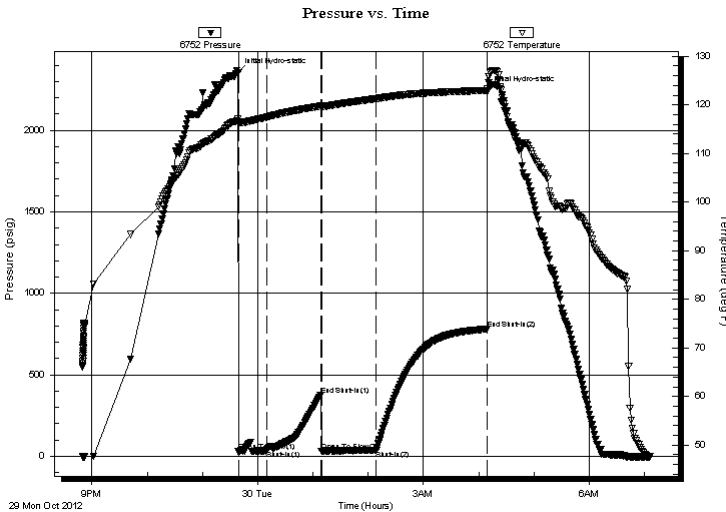
07:05:40

Time On Btm: 2012.10.29 @ 23:38:40

Time Off Btm: 2012.10.30 @ 04:09:40

TEST COMMENT: 30-IFP- Surface Blow Building to 9 1/2 in.
60-ISIP- Surface Blow in 3 min Building to 7 1/2 in.
60-FFP- BOB in 1 min
120-FSIP- No Blow

PRESSURE SUMMARY



Time (Min.)	Pressure (psig)	Temp (deg F)	Annotation
0	2355.90	117.05	Initial Hydro-static
1	29.25	116.47	Open To Flow (1)
31	39.13	117.49	Shut-In(1)
90	375.52	119.73	End Shut-In(1)
91	30.71	119.63	Open To Flow (2)
151	38.73	121.26	Shut-In(2)
271	781.40	122.98	End Shut-In(2)
271	2241.35	123.24	Final Hydro-static

Recovery

Length (ft)	Description	Volume (bbl)
50.00	MUD 100%	0.70

Gas Rates

Choke (inches)	Pressure (psig)	Gas Rate (Mcf/d)



**TRILOBITE
TESTING, INC.**

DRILL STEM TEST REPORT

FLUID SUMMARY

Woolsey Operating Co LLC

26 31s 17w Comanche

125 N Market Ste 1000
Wichita KS 67202-1729

Betty B Yost GU-B #2

Job Ticket: 48635

DST#: 1

ATTN: Scott Alberg

Test Start: 2012.10.29 @ 20:50:00

Mud and Cushion Information

Mud Type: Gel Chem

Cushion Type:

Oil API:

deg API

Mud Weight: 9.00 lb/gal

Cushion Length:

ft

Water Salinity:

ppm

Viscosity: 47.00 sec/qt

Cushion Volume:

bbbl

Water Loss: 8.76 in³

Gas Cushion Type:

Resistivity: ohm.m

Gas Cushion Pressure:

psig

Salinity: 5000.00 ppm

Filter Cake: 2.00 inches

Recovery Information

Recovery Table

Length ft	Description	Volume bbl
50.00	MUD 100%	0.701

Total Length: 50.00 ft Total Volume: 0.701 bbl

Num Fluid Samples: 0

Num Gas Bombs: 0

Serial #:

Laboratory Name:

Laboratory Location:

Recovery Comments:

Serial #: 6752

Inside

Woodsey Operating Co LLC

Betty B Yost GU-B #2

DST Test Number: 1

Pressure vs. Time

