



DRILL STEM TEST REPORT

Prepared For: **Primal Energy O&G**

21021 Springbrook Plaza Drive
Texas 77379

ATTN: Tim Hedrick

Soeken #1

10-19s-9w-Rice

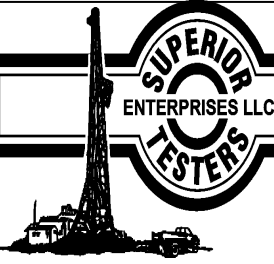
Start Date: 2012.11.06 @ 12:13:00

End Date: 2012.11.06 @ 18:53:00

Job Ticket #: 17866 DST #: 3

Superior Testers Enterprises LLC
PO Box 138 Great Bend KS 67530
1-800-792-6902

Printed: 2012.11.06 @ 17:09:13



DRILL STEM TEST REPORT

Primal Energy O&G

10-19s-9w-Rice

21021 Springbrook Plaza Drive
Texas 77379

Soeken #1

Job Ticket: 17866

DST#: 3

ATTN: Tim Hedrick

Test Start: 2012.11.06 @ 12:13:00

GENERAL INFORMATION:

Formation: **Lansing C**

Deviated: No Whipstock: ft (KB)

Time Tool Opened: 13:28:00

Time Test Ended: 18:53:00

Test Type: Conventional Bottom Hole (Initial)

Tester: Dustin Ellis

Unit No: 3315-Great Bend-65

Interval: 2902.00 ft (KB) To 2938.00 ft (KB) (TVD)

Reference Elevations: 1716.00 ft (KB)

Total Depth: 2938.00 ft (KB) (TVD)

1706.00 ft (CF)

Hole Diameter: 7.88 inches Hole Condition: Fair

KB to GR/CF: 10.00 ft

Serial #: 6663 Inside

Press @ RunDepth: 59.62 psia @ 2934.00 ft (KB)

Capacity: 5000.00 psia

Start Date: 2012.11.06

End Date: 2012.11.06

Last Calib.: 2012.11.06

Start Time: 12:13:00

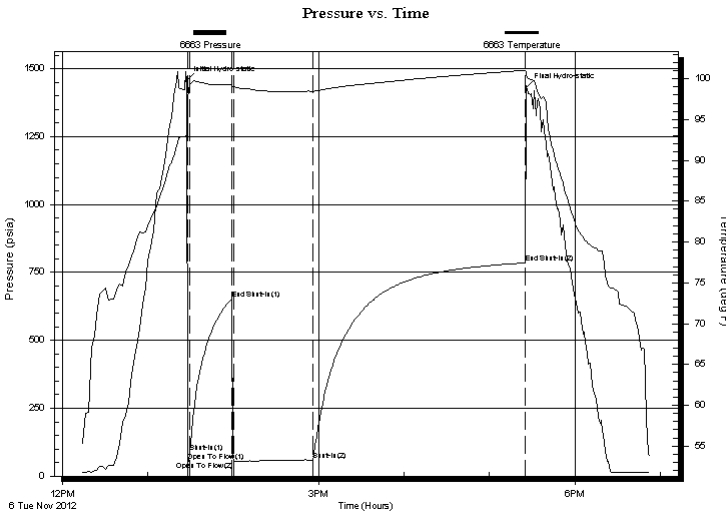
End Time: 18:53:00

Time On Btm: 2012.11.06 @ 13:27:00

Time Off Btm: 2012.11.06 @ 17:26:00

TEST COMMENT: 1st Open 2 minutes Strong blow blew off bottom bucket instantly
 1st Shut in 30 minutes No blow back
 2nd Open 60 minutes Strong blow blew bottom bucket instantly
 2nd Shut in 150 minutes No blow back

PRESSURE SUMMARY



Time (Min.)	Pressure (psia)	Temp (deg F)	Annotation
0	1454.77	93.31	Initial Hydro-static
1	53.70	97.72	Open To Flow (1)
3	88.16	99.27	Shut-In (1)
32	653.70	99.27	End Shut-In (1)
33	52.83	99.00	Open To Flow (2)
89	59.62	98.47	Shut-In (2)
238	784.98	101.03	End Shut-In (2)
239	1430.96	100.40	Final Hydro-static

Recovery

Length (ft)	Description	Volume (bbl)
20.00	Very lightly oil spotted mud Mud 100%	0.28
0.00	2918 gas in pipe	0.00
0.00	Gas to surface in 50 minutes into pipe.	0.00

Gas Rates

	Choke (inches)	Pressure (psia)	Gas Rate (Mcf/d)



DRILL STEM TEST REPORT

Primal Energy O&G
 21021 Springbrook Plaza Drive
 Texas 77379
 ATTN: Tim Hedrick

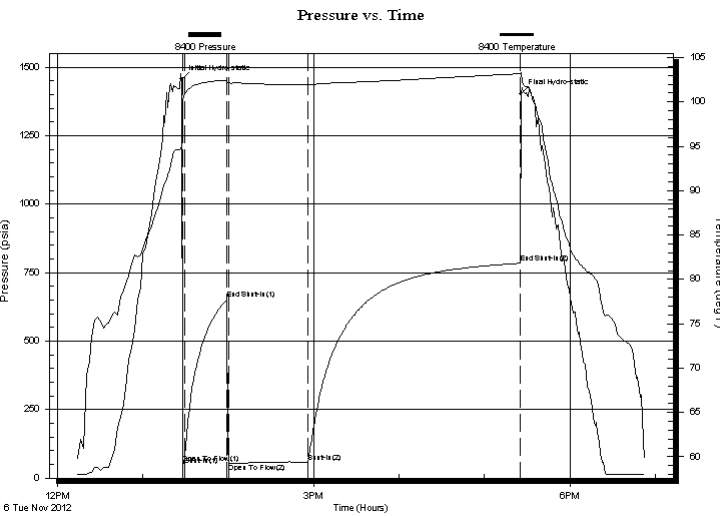
10-19s-9w-Rice
Soeken #1
 Job Ticket: 17866 **DST#: 3**
 Test Start: 2012.11.06 @ 12:13:00

GENERAL INFORMATION:

Formation: **Lansing C**
 Deviated: No Whipstock: ft (KB)
 Time Tool Opened: 13:28:00
 Time Test Ended: 18:53:00
 Interval: **2902.00 ft (KB) To 2938.00 ft (KB) (TVD)**
 Total Depth: 2938.00 ft (KB) (TVD)
 Hole Diameter: 7.88 inches Hole Condition: Fair
 Test Type: Conventional Bottom Hole (Initial)
 Tester: Dustin Ellis
 Unit No: 3315-Great Bend-65
 Reference Elevations: 1716.00 ft (KB)
 1706.00 ft (CF)
 KB to GR/CF: 10.00 ft

Serial #: 8400 Outside
 Press @ Run Depth: 784.34 psia @ 2935.00 ft (KB) Capacity: 5000.00 psia
 Start Date: 2012.11.06 End Date: 2012.11.06 Last Calib.: 2012.11.06
 Start Time: 12:13:00 End Time: 18:52:30 Time On Btm: 2012.11.06 @ 13:27:00
 Time Off Btm: 2012.11.06 @ 17:25:30

TEST COMMENT: 1st Open 2 minutes Strong blow blew off bottom bucket instantly
 1st Shut in 30 minutes No blow back
 2nd Open 60 minutes Strong blow blew bottom bucket instantly
 2nd Shut in 150 minutes No blow back



PRESSURE SUMMARY

Time (Min.)	Pressure (psia)	Temp (deg F)	Annotation
0	1455.42	95.02	Initial Hydro-static
1	54.01	100.11	Open To Flow (1)
3	79.46	100.96	Shut-In(1)
32	652.93	102.45	End Shut-In(1)
33	52.70	102.14	Open To Flow (2)
89	59.10	101.92	Shut-In(2)
238	784.34	103.18	End Shut-In(2)
239	1402.75	103.32	Final Hydro-static

Recovery

Length (ft)	Description	Volume (bbl)
20.00	Very lightly oil spotted mud Mud 100%	0.28
0.00	2918 gas in pipe	0.00
0.00	Gas to surface in 50 minutes into pipe.	0.00

Gas Rates

	Choke (inches)	Pressure (psia)	Gas Rate (Mcf/d)



DRILL STEM TEST REPORT

TOOL DIAGRAM

Primal Energy O&G
 21021 Springbrook Plaza Drive
 Texas 77379
 ATTN: Tim Hedrick

10-19s-9w-Rice
Soeken #1
 Job Ticket: 17866 **DST#: 3**
 Test Start: 2012.11.06 @ 12:13:00

Tool Information

Drill Pipe:	Length: 2889.00 ft	Diameter: 3.80 inches	Volume: 40.53 bbl	Tool Weight: 2000.00 lb
Heavy Wt. Pipe:	Length: 0.00 ft	Diameter: 0.00 inches	Volume: 0.00 bbl	Weight set on Packer: 20000.00 lb
Drill Collar:	Length: 0.00 ft	Diameter: 0.00 inches	Volume: 0.00 bbl	Weight to Pull Loose: 71000.00 lb
			<u>Total Volume: 40.53 bbl</u>	Tool Chased 7.00 ft
Drill Pipe Above KB:	15.00 ft			String Weight: Initial 50000.00 lb
Depth to Top Packer:	2902.00 ft			Final 51000.00 lb
Depth to Bottom Packer:	ft			
Interval between Packers:	36.00 ft			
Tool Length:	64.00 ft			
Number of Packers:	2	Diameter: 6.75 inches		

Tool Comments:

Tool Description	Length (ft)	Serial No.	Position	Depth (ft)	Accum. Lengths
Shut-In Tool	5.00			2879.00	
Hydraulic Tool	5.00			2884.00	
Jars	6.00			2890.00	
Safety Joint	2.00			2892.00	
Packer	5.00			2897.00	28.00 Bottom Of Top Packer
Packer	5.00			2902.00	
Anchor	31.00			2933.00	
Recorder	1.00	6663	Inside	2934.00	
Recorder	1.00	8400	Outside	2935.00	
Bull Plug	3.00			2938.00	36.00 Bottom Packers & Anchor
Total Tool Length:	64.00				



DRILL STEM TEST REPORT

FLUID SUMMARY

Primal Energy O&G
 21021 Springbrook Plaza Drive
 Texas 77379
 ATTN: Tim Hedrick

10-19s-9w-Rice
Soeken #1
 Job Ticket: 17866 **DST#: 3**
 Test Start: 2012.11.06 @ 12:13:00

Mud and Cushion Information

Mud Type: Gel Chem	Cushion Type:	Oil API:	deg API
Mud Weight: 9.00 lb/gal	Cushion Length: ft	Water Salinity:	ppm
Viscosity: 46.00 sec/qt	Cushion Volume: bbl		
Water Loss: 7.60 in ³	Gas Cushion Type:		
Resistivity: ohm.m	Gas Cushion Pressure: psia		
Salinity: 7000.00 ppm			
Filter Cake: 1.00 inches			

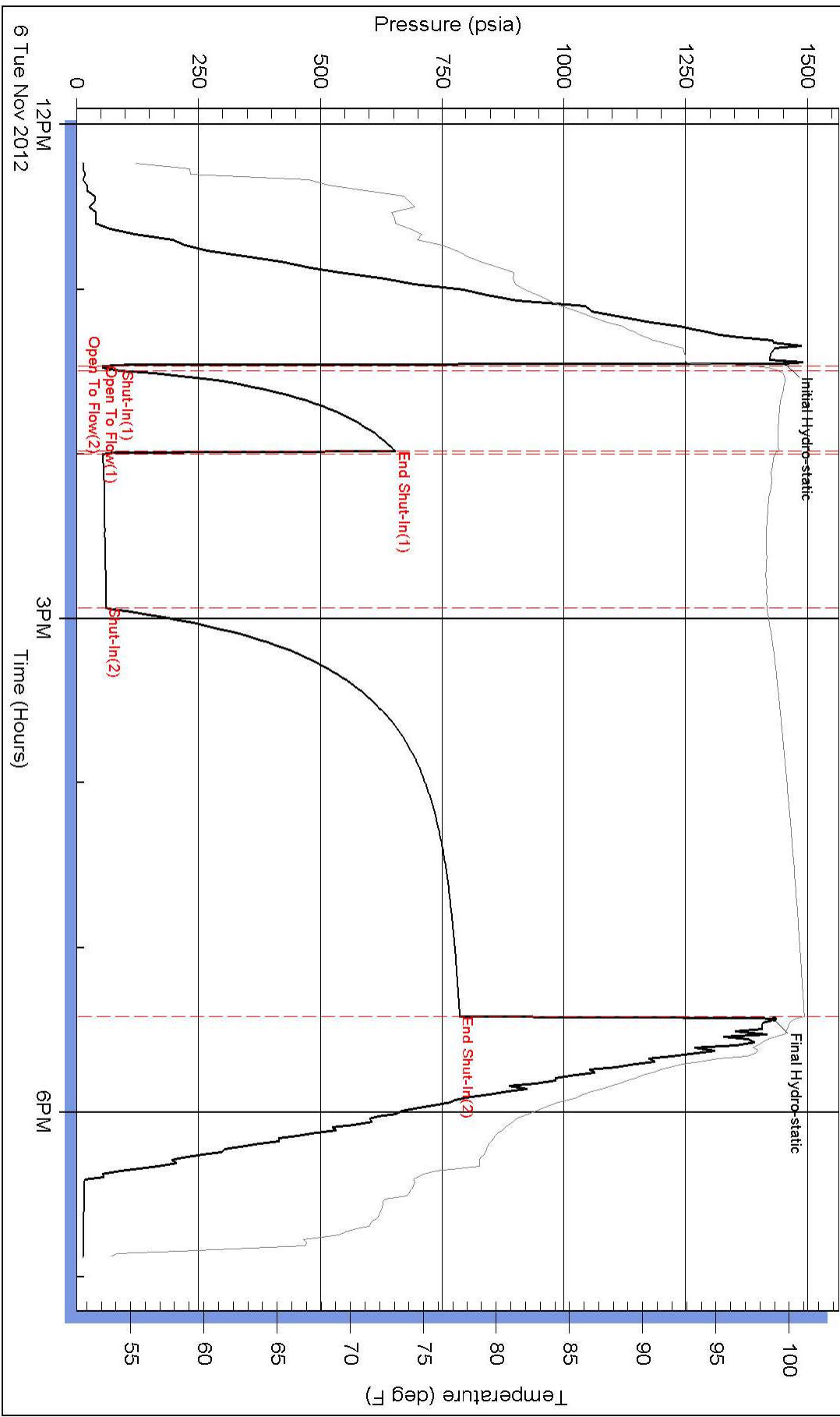
Recovery Information

Recovery Table

Length ft	Description	Volume bbl
20.00	Very lightly oil spotted mud Mud 100%	0.281
0.00	2918 gas in pipe	0.000
0.00	Gas to surface in 50 minutes into pipe.	0.000

Total Length: 20.00 ft Total Volume: 0.281 bbl
 Num Fluid Samples: 0 Num Gas Bombs: 0 Serial #:
 Laboratory Name: Laboratory Location:
 Recovery Comments:

Pressure vs. Time



Pressure vs. Time

