



Scale 1:240 (5"=100') Imperial
Measured Depth Log

Well Name: JOHNSON #7
Location: NW, SE, SW Sec. 12 - 18S - 8W Rice Co., KS
License Number: 15-159-22707-0000
Spud Date: 11/10/12
Surface Coordinates: 990' FSL & 1650' FWL
Region: Geneseo-Edwards
Drilling Completed: 11/18/12

Bottom Hole Coordinates: 342' - 1 DEG, 2805' - 2 3/4 DEG, 3310' - 3/4 DEG
Ground Elevation (ft): 1752' K.B. Elevation (ft): 1762'
Logged Interval (ft): 2400' To: 3310' Total Depth (ft): 3310'
Formation: L/KC, PENN SAND, ARBUCKLE
Type of Drilling Fluid: Chemical Mud

Printed by WellSight Log Viewer from WellSight Systems 1-800-447-1534 www.WellSight.com

OPERATOR

Company: DAYSTAR PETROLEUM, INC.
Address: 522 N. Main St.
P.O. Box 560
Eureka, KS 67045-0560

GEOLOGIST

Name: Justin D. Carter
Company: EARTH TECH OGL, INC.
Address: P.O. Box 603
Hooker, OK 73945
Office: 580-652-3924, Cell: 620-655-1187

COMMENTS

Drilling Contractor: Val Energy, Inc. Rig #3
Tool Pusher: Greg Davidson

8 5/8" surface casing set at 342'

Mud: Mudco
Engineer: Rick Hughes

Gas Detector: Earth Tech OGL, Inc.

Testing: Trilobite Testing
Tester: Chris Staats

Open-Hole Loggers: Pioneer Wireline Services



TRILOBITE TESTING, INC.

DRILL STEM TEST REPORT

Daystar Petroleum Inc

12-18-8 Rice co

522 N Main ST P.O. Box 560
Eureka KS 67045

Johnson #7

Job Ticket: 49501

DST#: 1

ATTN: Matthew Osborn/ Just

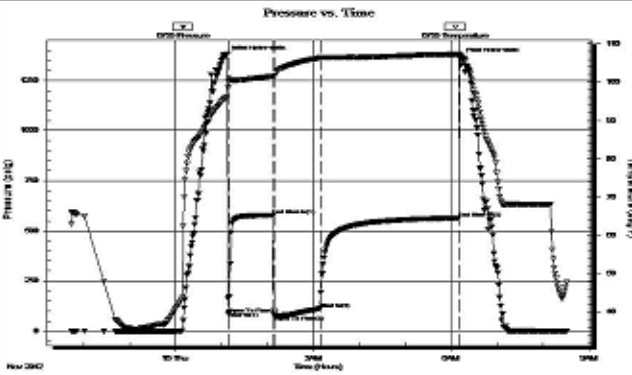
Test Start: 2012.11.14 @ 21:43:39

GENERAL INFORMATION:

Formation: **L/KC F**
 Deviated: No Whipstock: ft (KB)
 Time Tool Opened: 01:08:54
 Time Test Ended: 08:31:24
 Interval: **2870.00 ft (KB) To 2885.00 ft (KB) (TVD)**
 Total Depth: 2885.00 ft (KB) (TVD)
 Hole Diameter: 7.88 inches Hole Condition: Fair
 Test Type: Conventional Bottom Hole (Initial)
 Tester: Chris Staats
 Unit No: 47
 Reference Elevations: 1762.00 ft (KB)
 1752.00 ft (CF)
 KB to GR/CF: 10.00 ft

Serial #: 6755 Inside
 Press@RunDepth: 112.06 psig @ 2871.00 ft (KB) Capacity: 8000.00 psig
 Start Date: 2012.11.14 End Date: 2012.11.15 Last Calib.: 2012.11.15
 Start Time: 21:43:44 End Time: 08:31:24 Time On Btm: 2012.11.15 @ 01:06:09
 Time Off Btm: 2012.11.15 @ 06:11:54

TEST COMMENT: IF: Fair blow 7"
 IS: No blow back
 FF: Strong blow BOB 6 min
 FS: Weak blow back 1"



PRESSURE SUMMARY

Time (Min.)	Pressure (psig)	Temp (deg F)	Annotation
0	1373.56	95.86	Initial Hydro-static
3	85.40	100.09	Open To Flow (1)
4	94.42	100.92	Shut-In(1)
61	577.41	101.63	End Shut-In(1)
63	77.88	101.47	Open To Flow (2)
123	112.06	106.47	Shut-In(2)
304	563.72	107.40	End Shut-In(2)
306	1361.10	107.04	Final Hydro-static

Recovery

Length (ft)	Description	Volume (bbl)
0.00	1115' GIP	0.00
90.00	G,O,M 2%gas 8%oil 90%mud	0.44
120.00	G,O,M,W 2%oil 5%gas 13%mud 80%w	1.44

Gas Rates

Choke (inches)	Pressure (psig)	Gas Rate (Mcf/d)



**TRILOBITE
TESTING, INC.**

DRILL STEM TEST REPORT

Daystar Petroleum Inc
522 N Main ST P.O. Box 560
Eureka KS 67045
ATTN: Matthew Osborn/ Just

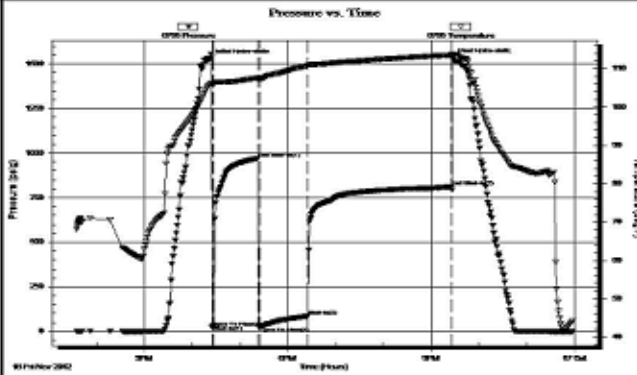
12-18-8 Rice co
Johnson #7
Job Ticket: 49502 **DST#: 2**
Test Start: 2012.11.16 @ 13:34:58

GENERAL INFORMATION:

Formation: **Arbuckle**
Deviated: No Whipstock: ft (KB)
Time Tool Opened: 16:25:13
Time Test Ended: 23:57:28
Test Type: Conventional Bottom Hole (Reset)
Tester: Chris Staats
Unit No: 47
Interval: **3171.00 ft (KB) To 3193.00 ft (KB) (TVD)**
Total Depth: 3193.00 ft (KB) (TVD)
Hole Diameter: 7.88 inches Hole Condition: Fair
Reference Elevations: 1762.00 ft (KB)
1752.00 ft (CF)
KB to GR/CF: 10.00 ft

Serial #: 6755 Inside
Press@RunDepth: 84.72 psig @ 3172.00 ft (KB)
Start Date: 2012.11.16 End Date: 2012.11.16
Start Time: 13:35:03 End Time: 23:57:28
Capacity: 8000.00 psig
Last Calib.: 2012.11.17
Time On Btm: 2012.11.16 @ 16:22:13
Time Off Btm: 2012.11.16 @ 21:26:58

TEST COMMENT: IF: Weak blow 4"
IS: No blow back
FF: Strong blow BOB 40 min
FS: Weak blow back



PRESSURE SUMMARY

Time (Min.)	Pressure (psig)	Temp (deg F)	Annotation
0	1525.39	105.77	Initial Hydro-static
3	21.86	105.91	Open To Flow (1)
5	31.06	105.95	Shut-In(1)
61	970.00	107.54	End Shut-In(1)
62	25.20	107.27	Open To Flow (2)
123	84.72	110.71	Shut-In(2)
304	811.26	113.52	End Shut-In(2)
305	1530.45	113.79	Final Hydro-static

Recovery

Length (ft)	Description	Volume (bbl)
0.00	310' GIP	0.00
3.00	OIL	0.01
60.00	O,M,W 1%oil 39%mud 60%w ater	0.30
120.00	O,M,W 1%oil 9%mud 90%w ater	1.19

* Recovery from multiple tests

Gas Rates

Choke (inches)	Pressure (psig)	Gas Rate (Mcf/d)



**TRILOBITE
TESTING, INC.**

DRILL STEM TEST REPORT

Daystar Petroleum Inc

12-18-8 Rice co

522 N Main ST P.O. Box 560
Eureka KS 67045

Johnson #7

Job Ticket: 49503

DST#: 3

ATTN: Matthew Osborn/ Just

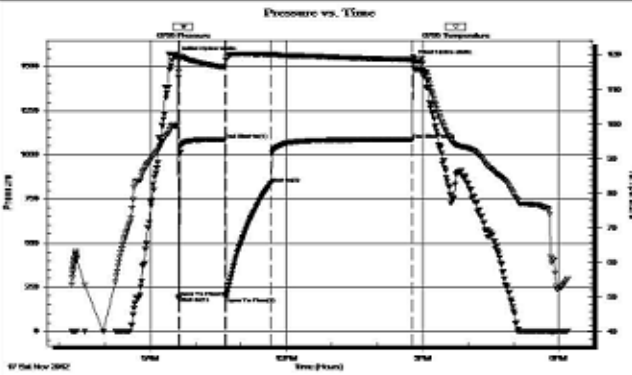
Test Start: 2012.11.17 @ 07:16:16

GENERAL INFORMATION:

Formation: **Arbuckle**
 Deviated: No Whipstock: ft (KB)
 Time Tool Opened: 09:37:46
 Time Test Ended: 18:11:16
 Interval: **3193.00 ft (KB) To 3200.00 ft (KB) (TVD)**
 Total Depth: 3200.00 ft (KB) (TVD)
 Hole Diameter: 7.88 inches Hole Condition: Fair
 Test Type: Conventional Bottom Hole (Reset)
 Tester: Chris Staats
 Unit No: 47
 Reference Elevations: 1762.00 ft (KB)
 1752.00 ft (CF)
 KB to GR/CF: 10.00 ft

Serial #: **6755** Inside
 Press@RunDepth: 835.76 psig @ 3194.00 ft (KB) Capacity: 8000.00 psig
 Start Date: 2012.11.17 End Date: 2012.11.17 Last Calib.: 2012.11.17
 Start Time: 07:16:21 End Time: 18:11:16 Time On Btm: 2012.11.17 @ 09:34:46
 Time Off Btm: 2012.11.17 @ 14:47:16

TEST COMMENT: IF: Strong blow BOB 1 min
 IS: Surface blow back
 FF: Strong blow BOB 1 min
 FS: Strong blow BOB 8 min



PRESSURE SUMMARY

Time (Min.)	Pressure (psig)	Temp (deg F)	Annotation
0	1553.87	99.52	Initial Hydro-static
3	190.92	115.30	Open To Flow (1)
4	194.59	118.75	Shut-In(1)
64	1086.81	116.52	End Shut-In(1)
66	192.21	118.54	Open To Flow (2)
125	835.76	120.19	Shut-In(2)
312	1086.36	118.68	End Shut-In(2)
313	1535.74	117.70	Final Hydro-static

Recovery

Length (ft)	Description	Volume (bbl)
0.00	2480 GIP	0.00
90.00	Clean Oil	0.44
280.00	G.M.O.W 5%gas 5%mud 10%oil 80%water	3.68
120.00	O.M.W 1%oil 4%mud 95%water	1.68
1365.00	Water 100%	19.15

Gas Rates

Choke (inches)	Pressure (psig)	Gas Rate (Mcf/d)

* Recovery from multiple tests

Tribolite Testing, Inc

Ref. No: 49503

Printed: 2012.11.17 @ 20:01:18

ROCK TYPES

- Anhy
- Bent
- Brec
- Cht
- Clyst
- Coal
- Congl
- Dol

- Gyp
- Igne
- Lmst
- Meta
- Mrlst
- Salt
- Shale
- Shcol

- Shgy
- Sltst
- Ss
- Till
- Carb sh
- Dol
- Dtd
- Gry sh

- Sandylms
- Shale
- Sltstn
- Shlyslts
- Sltys h
- Lms

ACCESSORIES

FOSSIL

- Algae
- Amph
- Belm
- Bioclst
- Brach
- Bryozoa
- Cephal
- Coral
- Crin
- Echin
- Fish
- Foram
- Fossil
- Gastro
- Oolite
- Ostra
- Pelec
- Pellet
- Pisolite
- Plant
- Strom
- Fuss
- Oomold

MINERAL

- Anhy
- Arggrn
- Arg
- Bent
- Bit
- Breclfrag
- Calc
- Carb
- Chtdk
- Chtlt
- Dol
- Feldspar
- Ferrpel
- Ferr
- Glau
- Gyp
- Hvymin
- Kaol
- Marl
- Minxl
- Nodule
- Phos
- Pyr

- Salt
- Sandy
- Silt
- Sil
- Sulphur
- Tuff
- Chlorite
- Dol
- Sand
- Sltly

- Dol
- Grysh
- Gryslt
- Lms
- Sandylms
- Sh
- Sltstn

STRINGER

- Anhy
- Arg
- Bent
- Coal
- Dol
- Gyp
- Ls
- Mrst
- Sltstrg
- Ssstrg
- Carbsh
- Clystn

TEXTURE

- Boundst
- Chalky
- Cryxln
- Earthy
- Finexln
- Grainst
- Lithogr
- Microxln
- Mudst
- Packst
- Wackest

OTHER SYMBOLS

INTERVALS

- Core
- Dst

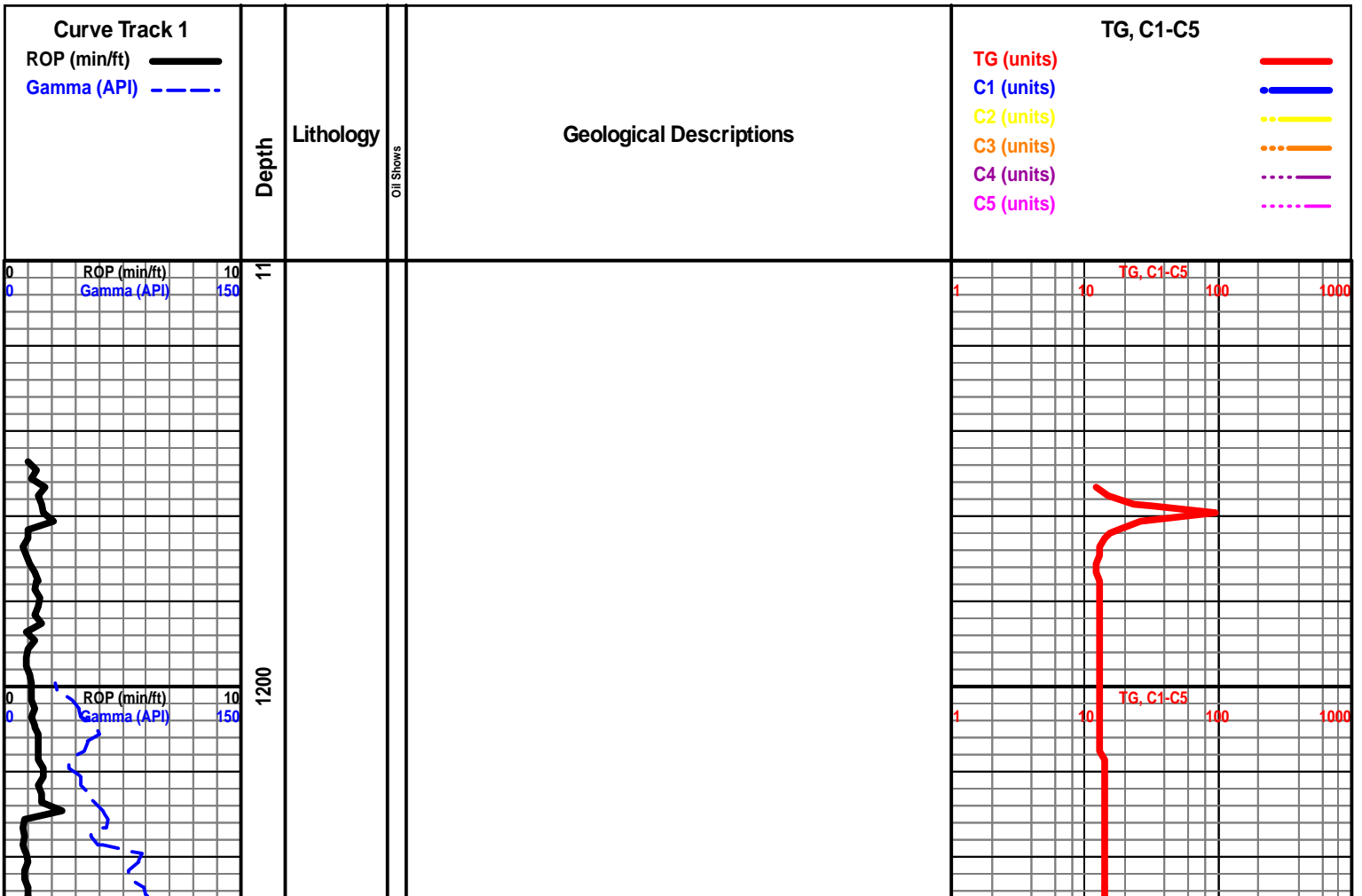
- Dst

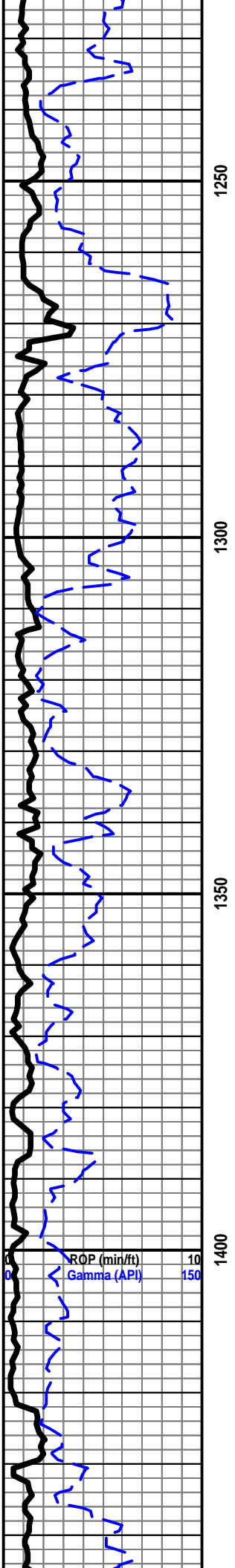
OIL SHOWS

- Even
- Spotted

Ques

- Dead
- Gas show





1250

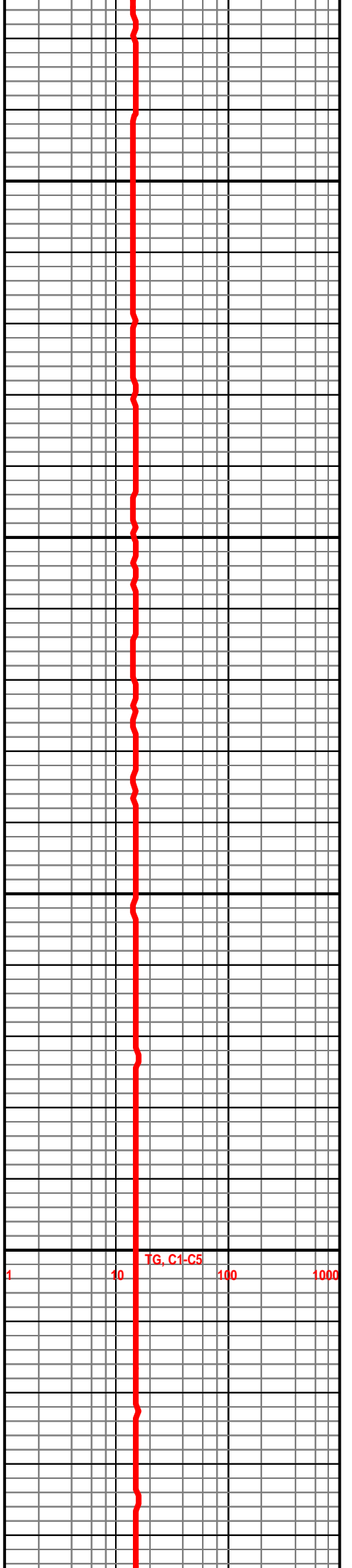
1300

1350

1400

ROP (min/ft)
Gamma (API)

10
150



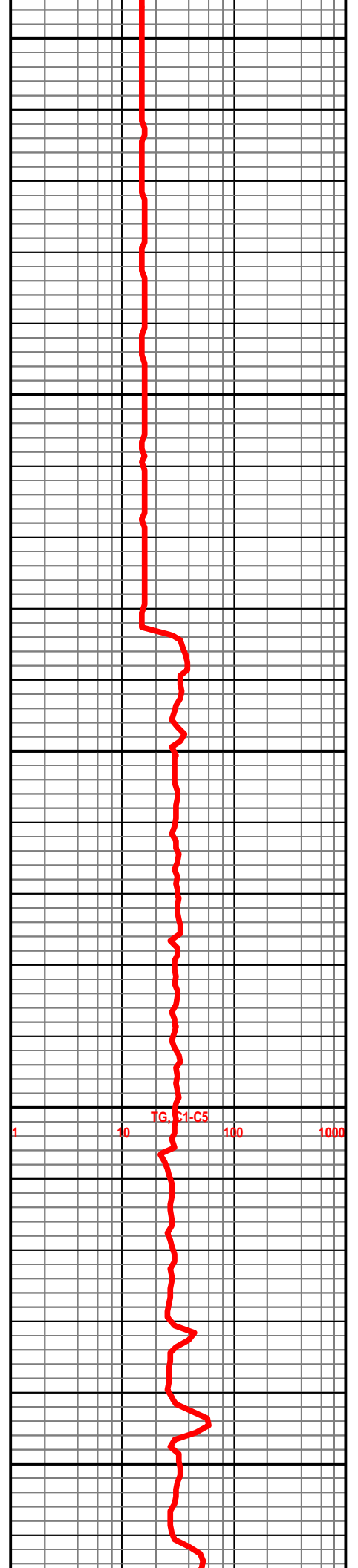
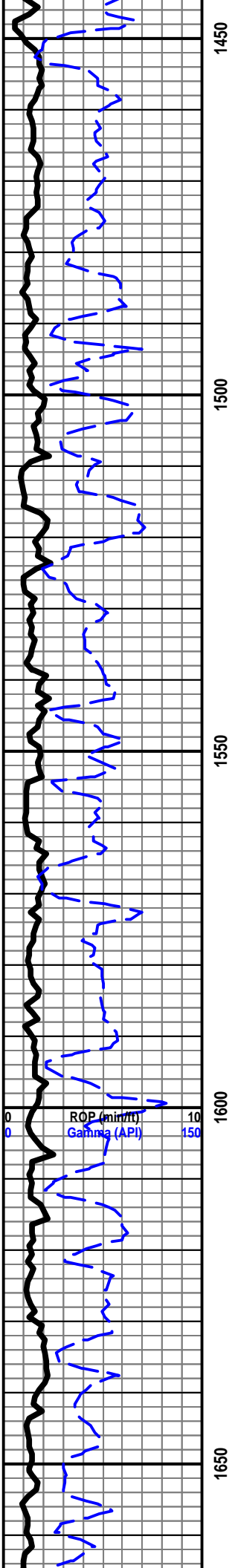
TG, C1-C5

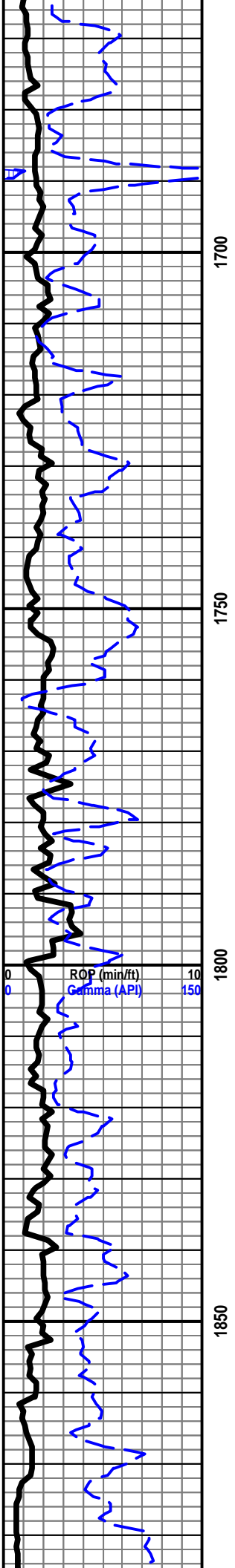
1

10

100

1000





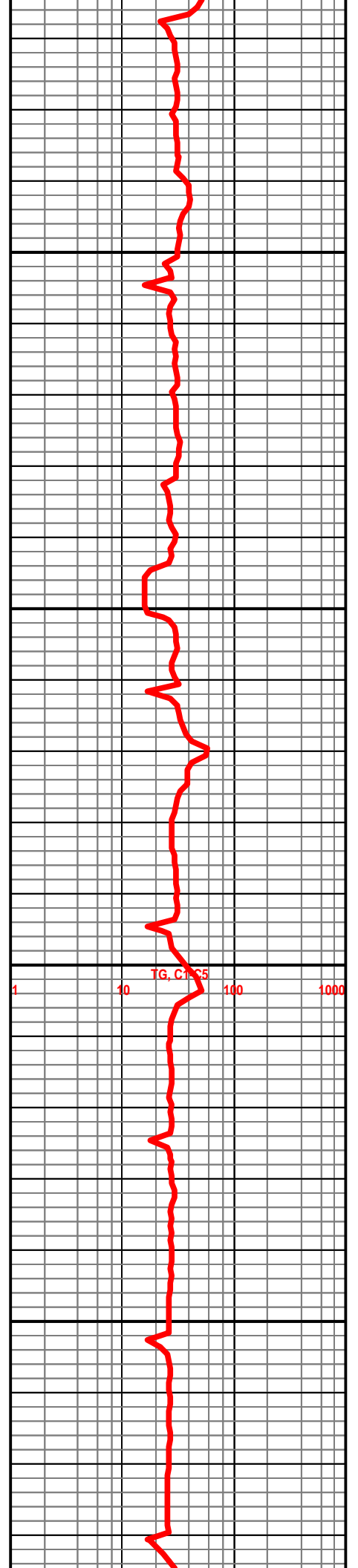
1700

1750

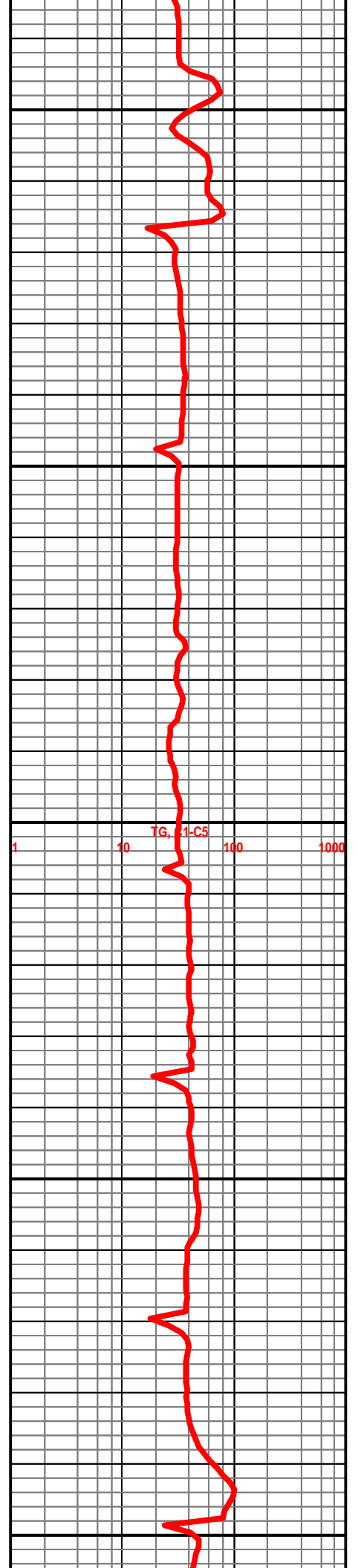
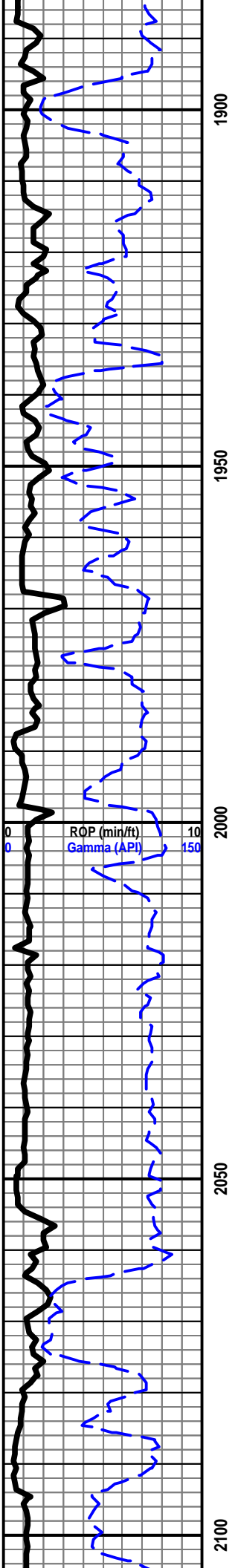
1800

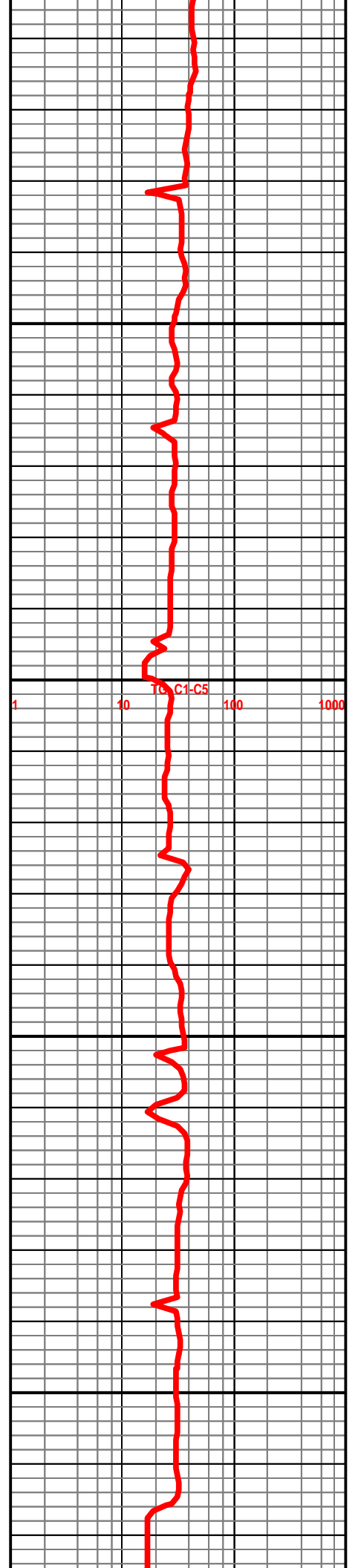
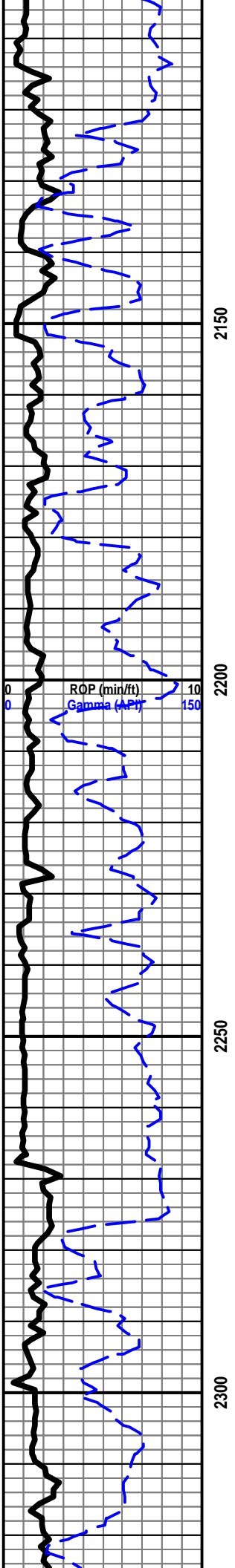
1850

ROP (min/ft) 10
Gamma (API) 150



TG, C1-C5





GEOLOGIST ON LOCATION 4:00 P.M. 11/13/12

DISPLACE HOLE @ 2396'

LS- CRM LT GY, HRD DNS, VF-XLN, SUB-SUCRO MTRX THRU TO TR RE-XLN, IMBED FOSS FRAGS SCAT THRU, NO FLO, TR INTER-FOSS POR TO NO VIS POR IP, NS

LS- GY TN, HRD DNS, VF-XLN, RE-XLN MTRX IP, IMBED FOSS FRAGS THRU, NO FLO, NO VIS POR

LS- CRM, HRD DNS, VF-XLN, SUB-SUCRO MTRX IP TO TR RE-XLN MTRX TO TR SUB-CHLKY, IMBED FOSS FRAGS, NO FLO, NO VIS POR

LS- CRM OFF WHT, BRITT, VF-XLN, SUB-SUCRO MTRX IP TO SUB-CHLKY IP, LG FOSS FRAGS IP, SM VUGS SCAT THRU, NO FLO, FR INTER-VUG POR SCAT THRU, NS

LS- LT TN CRM, HRD DNS, VF-XLN, RE-XLN MTRX IP, TR FOSS FRAGS, NO FLO, NO VIS POR

LS- CRM LT GY, HRD DNS, VF-XLN, RE-XLN MTRX THRU, TR CORSE CALC XLS, NO FLO, TR INTER-XLN POR IN CALC XLS TO NO VIS POR THRU, NS

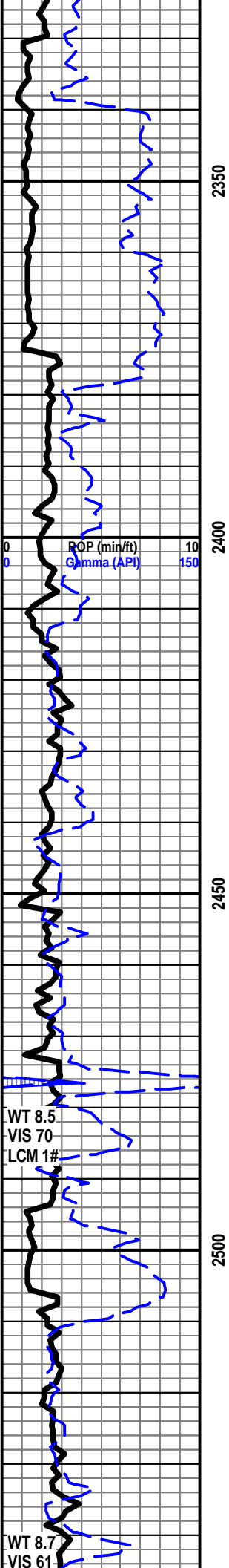
LS- LT CRM, HRD DNS, VF/CRYPTO-XLN, RE-XLN MTRX IP, NO FLO, NO VIS POR

SH- DK GY, SFT, LMY THRU TO TR SLTY, GMMY TO BLKY IP

LS- LT GY CRM, HRD DNS, VF-XLN, RE-XLN MTRX IP TO TR SUB-SUCRO, TR FOSS FRAGS, TR OPQ CHRT, NO FLO, NO VIS POR

LS- CRM, HRD DNS, VF-XLN, RE-XLN MTRX IP, TR IMBED FOSS FRAGS, NO FLO, NO VIS POR

LS- LT CRM, HRD DNS, VF-XLN, RE-XLN MTRX IP, LAM GY SH IP, NO FLO, NO VIS POR

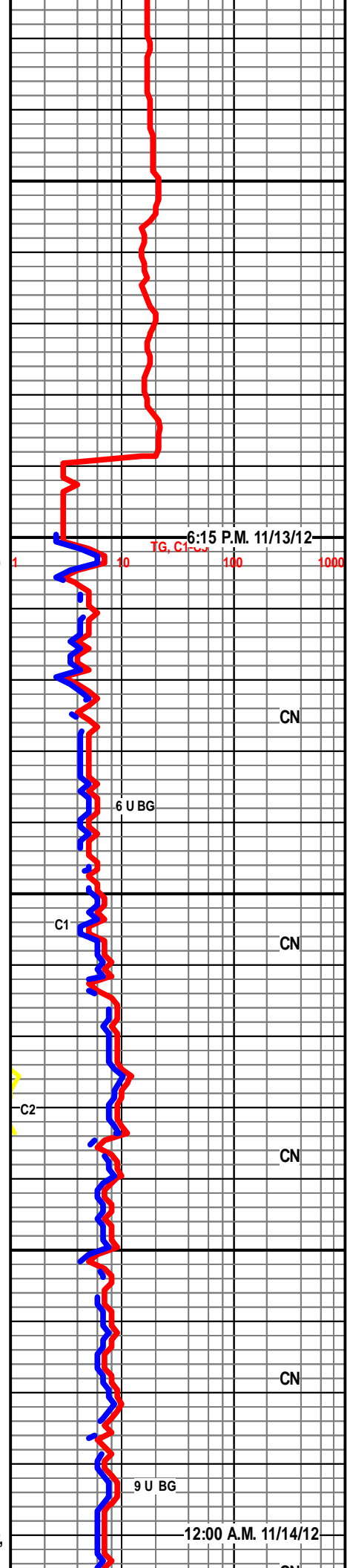
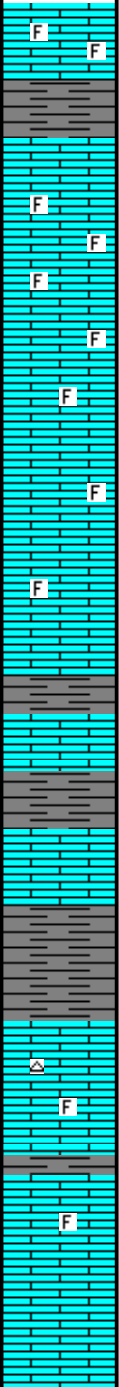


2350

2400

2450

2500



CN

CN

CN

CN

CN

BROWN LIME 2768' (-1006')

LS- LT BRN, HRD DNS, VF-XLN, RE-XLN MTRX IP TO SUB-CHLKY IP, IMBED SH IP, NO FLO, NO VIS POR

SH- GRN DK GY, SFT, SLTY THRU TO TR LMY, GMMY IP

LANSING 2802' (-1040')

LS- TN OFF WHT, HRD DNS, F/VF-XLN, RE-XLN MTRX IP TO SUB-SUCRO IP TO TR SUB-CHLKY, FINE CALC XL CLUSTERS IP, NO FLO, POSS FRAC POR TO TR INTER-XLN POR IN CALC XLS, NS

LS- TN GY, BRITT, F/VF-XLN, SUB-SUCRO TO SUCRO MTRX THRU, OOLICASTS THRU, TR IMBED SM OOL, TR YEL FLO, V/FAINT SLO BLU STRM CUT, GD OOMLD POR THRU, NO STAIN, NO ODOR

LS- GY TN, MOTT IP, VF-XLN, RE-XLN MTRX IP TO SUB-SUCRO IP, TR IMBED OOL, TR OOLICASTS, NO FLO, TR OOMLD POR TO NO VIS POR IP, NS

LS- LT GY LT BRN, HRD DNS, VF-XLN, RE-XLN MTRX THRU, TR OOL, NO FLO, NO VIS POR

SH- GY DK GY, FRM, BLKY, LMY

LS- DK TN OFF WHT, BRITT, MD/F-XLN, SUCRO MTRX THRU, SLI DOLOMITIZED IN SOME SMPLES, YEL GLD FLO SCAT THRU, GD FLUSH TO GD FAST BLU STRM CUT, FR/GD INTER-XLN POR THRU TO TR MICRO PP POR, GD ODOR, DK TN STAIN SCAT THRU, F.O.

STRAP OUT @ 2885', 0.7' SHORT TO BOARD

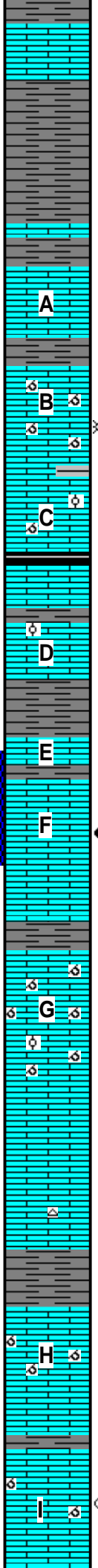
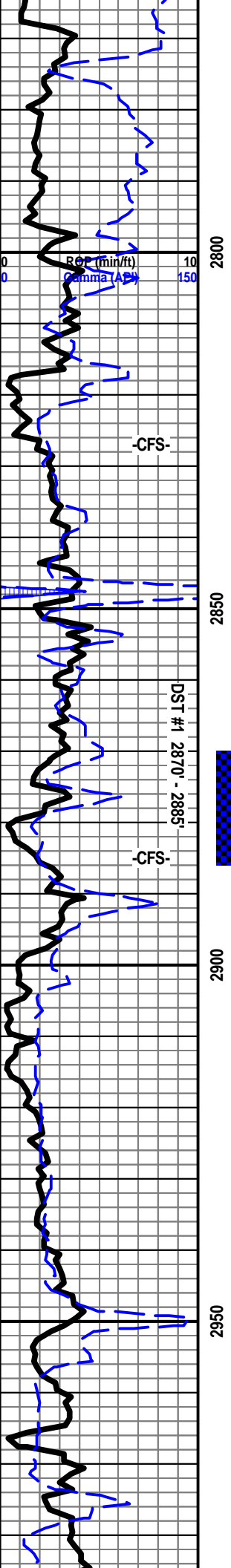
LS- TN, BRITT, VF-XLN, SUB-SUCRO MTRX THRU, OOLICASTS THRU, TR IMBED OOL, TR YEL FLO, NO VIS CUT, FR OOMLD POR THRU, FAINT ODOR, NO STAIN

LS- LT GY WHT, HRD DNS, VF-XLN, RE-XLN MTRX IP TO TR SUB-CHLKY, NO FLO, NO VIS CUT, NO VIS POR, TR BLK RESIDUAL STAIN, NS

LS- TN LT BRN, HRD DNS, VF/CRYPTO-XLN, RE-XLN MTRX THRU, TR WHT CHRT, NO FLO, NO VIS POR

LS- CRM, BRITT TO HRD DNS IP, F/VF-XLN, SUB-SUCRO TO SUCRO MTRX THRU, OOLICASTS IP, TR YEL FLO, NO VIS CUT, FR OOMLD POR IP TO TR INTER-XLN POR, TR STAIN, NO ODOR

LS- CRM, HRD DNS TO BRITT IP, F/VF-XLN, SUB-SUCRO MTRX THRU, TR OOLICASTS, TR YEL GLD FLO, FAINT SLO BLU STRM CUT, PR OOMLD POR IP TO TR INTER-XLN POR, TR STAIN, NO ODOR



LS- LT BRN, HRD DNS, VF-XLN, RE-XLN MTRX IP TO SUB-CHLKY IP, IMBED SH IP, NO FLO, NO VIS POR

SH- GRN DK GY, SFT, SLTY THRU TO TR LMY, GMMY IP

LANSING 2802' (-1040')

LS- TN OFF WHT, HRD DNS, F/VF-XLN, RE-XLN MTRX IP TO SUB-SUCRO IP TO TR SUB-CHLKY, FINE CALC XL CLUSTERS IP, NO FLO, POSS FRAC POR TO TR INTER-XLN POR IN CALC XLS, NS

LS- TN GY, BRITT, F/VF-XLN, SUB-SUCRO TO SUCRO MTRX THRU, OOLICASTS THRU, TR IMBED SM OOL, TR YEL FLO, V/FAINT SLO BLU STRM CUT, GD OOMLD POR THRU, NO STAIN, NO ODOR

LS- GY TN, MOTT IP, VF-XLN, RE-XLN MTRX IP TO SUB-SUCRO IP, TR IMBED OOL, TR OOLICASTS, NO FLO, TR OOMLD POR TO NO VIS POR IP, NS

LS- LT GY LT BRN, HRD DNS, VF-XLN, RE-XLN MTRX THRU, TR OOL, NO FLO, NO VIS POR

SH- GY DK GY, FRM, BLKY, LMY

LS- DK TN OFF WHT, BRITT, MD/F-XLN, SUCRO MTRX THRU, SLI DOLOMITIZED IN SOME SMPLES, YEL GLD FLO SCAT THRU, GD FLUSH TO GD FAST BLU STRM CUT, FR/GD INTER-XLN POR THRU TO TR MICRO PP POR, GD ODOR, DK TN STAIN SCAT THRU, F.O.

STRAP OUT @ 2885', 0.7' SHORT TO BOARD

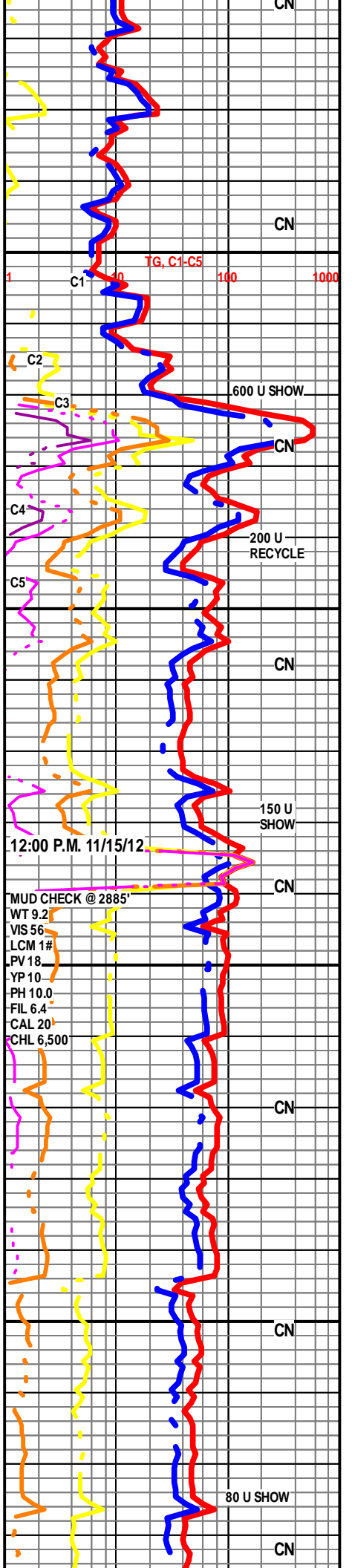
LS- TN, BRITT, VF-XLN, SUB-SUCRO MTRX THRU, OOLICASTS THRU, TR IMBED OOL, TR YEL FLO, NO VIS CUT, FR OOMLD POR THRU, FAINT ODOR, NO STAIN

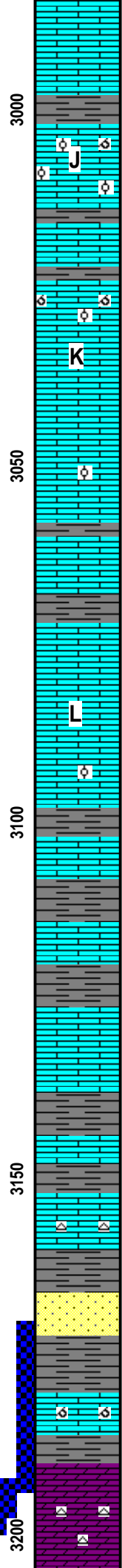
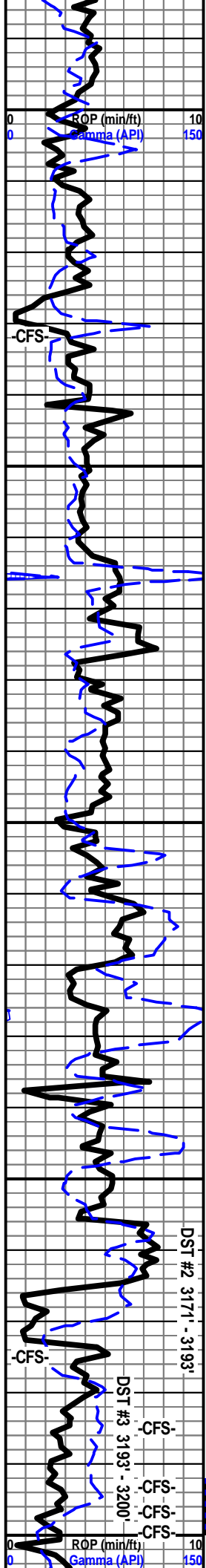
LS- LT GY WHT, HRD DNS, VF-XLN, RE-XLN MTRX IP TO TR SUB-CHLKY, NO FLO, NO VIS CUT, NO VIS POR, TR BLK RESIDUAL STAIN, NS

LS- TN LT BRN, HRD DNS, VF/CRYPTO-XLN, RE-XLN MTRX THRU, TR WHT CHRT, NO FLO, NO VIS POR

LS- CRM, BRITT TO HRD DNS IP, F/VF-XLN, SUB-SUCRO TO SUCRO MTRX THRU, OOLICASTS IP, TR YEL FLO, NO VIS CUT, FR OOMLD POR IP TO TR INTER-XLN POR, TR STAIN, NO ODOR

LS- CRM, HRD DNS TO BRITT IP, F/VF-XLN, SUB-SUCRO MTRX THRU, TR OOLICASTS, TR YEL GLD FLO, FAINT SLO BLU STRM CUT, PR OOMLD POR IP TO TR INTER-XLN POR, TR STAIN, NO ODOR





LS- GY LT TN, HRD DNS, VF/CRYPTO-XLN, RE-XLN MTRX THRU, TR MED CALC XLS, NO FLO, NO VIS POR

LS- TN CRM GY, BRITT, F/VF-XLN, SUB-SUCRO MTRX THRU, IMBED GY OOL SCAT THRU, TR OOLICASTS, TR BRIT YEL GLD FLO IP, FAINT SLO BLU STRM CUT, PR INTER-OOL POR IP TO TR OOMLD POR, TN STAIN IN 40%, NO ODOR

LS- WHT OFF WHT, BRITT, F/VF-XLN, SUB-SUCRO MTRX THRU, OOLICASTS THRU, TR IMBED OOL, NO FLO, NO VIS CUT, FR OOMLD POR THRU, NS

LS- CRM GY, HRD DNS, VF-XLN, SUB-SUCRO MTRX IP TO RE-XLN IP, TR MD/F CALC XLS, TR IMBED OOL, NO FLO, NO VIS POR

LS- LT GY, HRD DNS, CRYPTO-XLN, RE-XLN MTRX IP, NO FLO, NO VIS POR

LS- CRM BFF, HRD DNS, VF-XLN, RE-XLN MTRX IP, NO FLO, NO VIS POR, TR BLK RESIDUAL STAIN, NS

LS- CRM, HRD DNS, VF-XLN, RE-XLN MTRX THRU, TR IMBED OOL, NO FLO, NO VIS POR

BKC 3107' (-1345')

LS- LT CRM, HRD DNS, VF-XLN, RE-XLN MTRX THRU, NO FLO, NO VIS POR

LS- REDISH CRM, HRD DNS, VF-XLN, RE-XLN MTRX IP, TR IMBED DK GY SH, NO FLO, NO VIS POR

LS- CRM RD, HRD DNS, VF-XLN, RE-XLN MTRX IP, IMBED GY RD SH, NO FLO, NO VIS POR

LS- CRM, HRD DNS, VF-XLN, RE-XLN MTRX IP, WHT OPQ CHRT IP, NO FLO, NO VIS POR

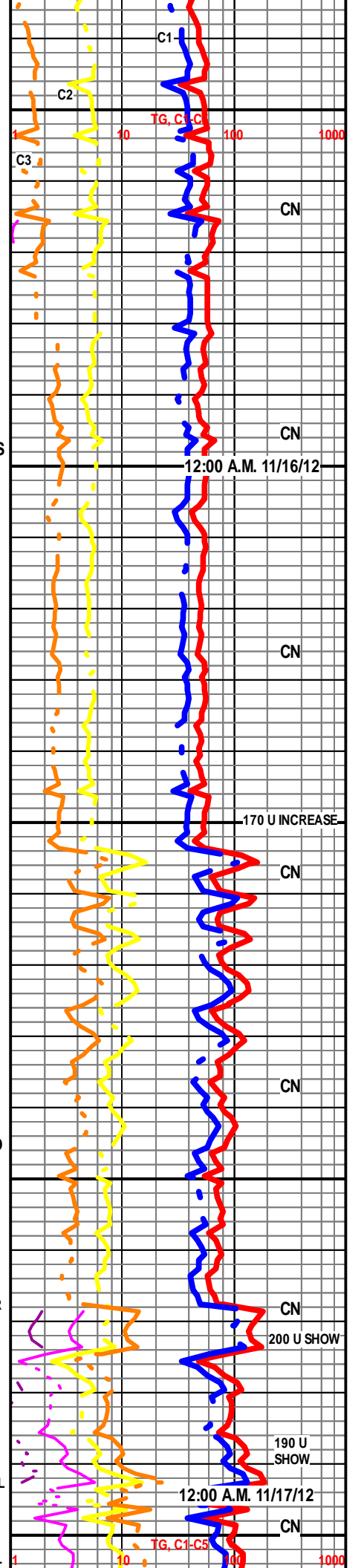
SS- CLR GY, FRI, CORSE/MD-GRNS, FR/GD SRT, SILI CMNT, SUB-RND GRNS, PYR IP, LOOSE QTZ GRNS IN TRAY, SOME SMPLES W/ ABDT IMBED GY SH, YEL GLD FLO SCAT THRU, PR FLUSH CUT TO FR SLO BLU STRM CUT, FR/GD INTER-GRN POR THRU, LT TN STAIN IP, FR ODOR

LS- CRM, HRD DNS, VF-XLN, SUB-SUCRO MTRX THRU, TR OOLICASTS, NO FLO, TR OOMLD POR, NS

ARBUCKLE 3189' (-1427')

DOLO- TN OFF WHT, BRITT, F-XLN, SUCRO MTRX THRU, TR SFT WHT CHLK, YEL GLD FLO THRU, FR FLUSH TO FR SLO BLU STRM CUT, PR/FR INTER-XLN POR THRU TO TR MICRO PP POR, TN STAIN IN 80%, GD ODOR, GAS BUBBLES, TR F.O.

3195' DOLO- TN, HRD DNS, MD/VF-XLN, SUCRO MTRX THRU, WHT CHRT IP, YEL



TO YEL GLD FLO THRU, GD FLUSH CUT TO FR SLO BLU STRM CUT, PR/FR INTER-XLN POR THRU, STAIN STAIN IN 70%, GD ODOR, TR F.O.

3198' DOLO- TN OFF WHT, HRD DNS, MD/F-XLN, SUCRO MTRX THRU, TR SFT WHT CHLK, YEL FLO THRU, FR/GD FLUSH CUT TO FR SLO BLU STRM CUT, FR INTER-XLN POR SCAT THRU TO TR MICRO PP POR, STAIN IN 50%, GD ODOR, F.O.

3205' DOLO- TN CRM, HRD DNS, MD/VF-XLN, SUCRO MTRX THRU, YEL GLD FLO THRU, FR FLUSH CUT TO PR SLO BLU STRM CUT, FR INTER-XLN POR THRU, TR TN STAIN, FR ODOR

3225' DOLO- TN BFF, HRD DNS, MD/VF-XLN, SUCRO MTRX IP TO RE-XLN IP, TR SFT WHT CHLK, TR BRIT YEL GLD FLO TO NO FLO THRU, PR FLUSH TO PR SLO BLU STRM CUT, FR INTER-XLN POR IP TO NO VIS POR IP, TR TN STAIN, FAINT ODOR

3235' DOLO- TN BFF, HRD DNS, F/VF-XLN, SUCRO MTRX THRU, SM VUGS IP, YEL TO YEL GLD FLO THRU, FR FLUSH TO FR FAST STRM CUT, PR/FR INTER-XLN POR SCAT THRU TO FR INTER-VUG POR IP, TN STAIN IP, GD ODOR

3250' DOLO- BFF, HRD DNS, VF-XLN, RE-XLN MTRX IP TO TR SUCRO MTRX, TR VUGS, TR YEL FLO, NO FLUSH TO FAINT SLO BLU STRM CUT, TR INTER-XLN POR TO TR INTER-XLN POR TO NO VIS POR, GD ODOR, TR STAIN

DOLO- BFF TN, HRD DNS, F/VF-XLN, SUCRO MTRX THRU TO TR RE-XLN, TR YEL FLO, NO FLUSH TO FR SLO BLU STRM CUT, PR INTER-XLN POR IP, GD ODOR, TR STAIN, TR F.O.

DOLO- TN, HRD DNS, VF-XLN, RE-XLN MTRX IP TO SUCRO MTRX IP, TR YEL FLO, NO FLUSH TO FAINT SLO BLU STRM CUT, PR INTER-XLN POR IP TO NO VIS POR IP, TR STAIN, GD ODOR

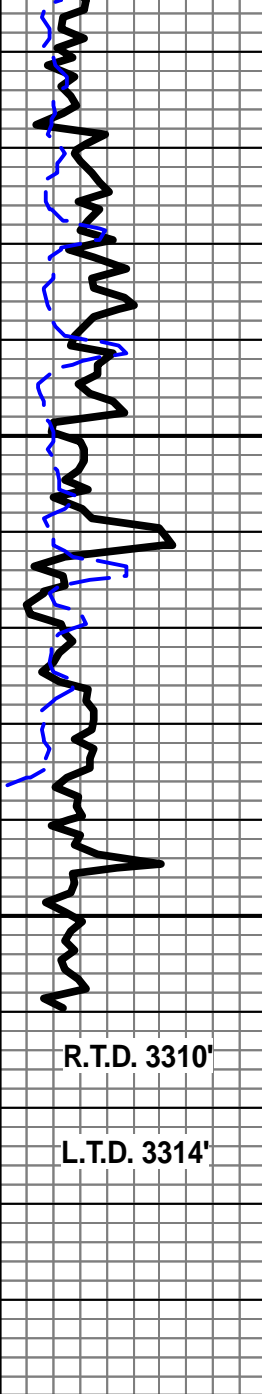
DOLO- CRM LT TN, HRD DNS, VF-XLN, SUCRO MTRX THRU, NO FLO, PR INTER-XLN POR THRU, GD ODOR

TD @ 3:45 A.M. 11/18/12

C.T.C.H. 1 1/2 HR.

T.O.H. FOR LOGS

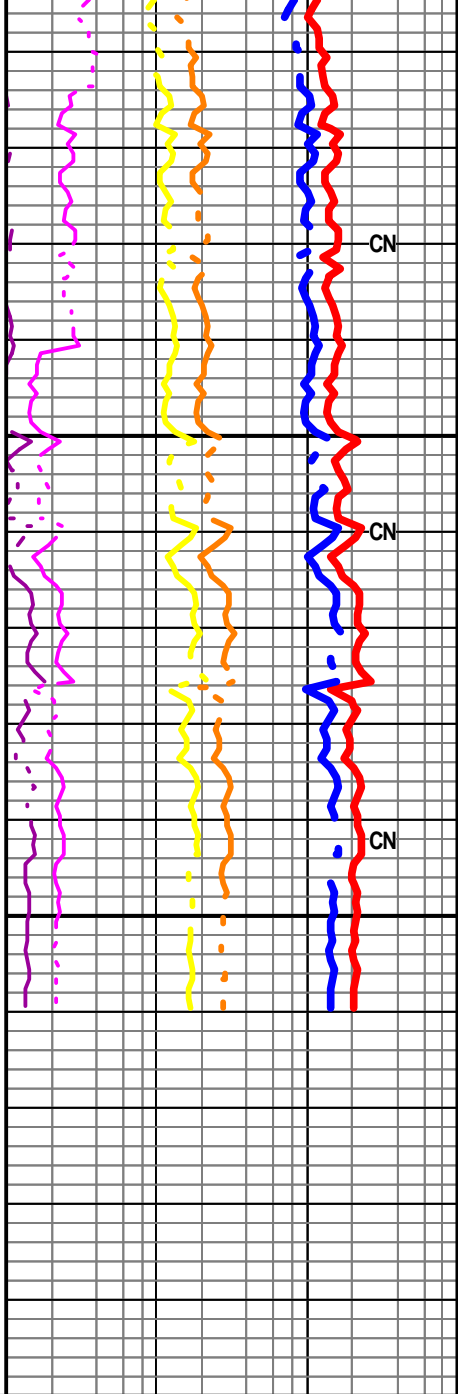
FINISH E-LOGS 11:00 A.M. 11/18/12



3250

3300

50



CN

CN

CN

R.T.D. 3310'

L.T.D. 3314'