



TRILOBITE TESTING, INC.

DRILL STEM TEST REPORT

Cholla Production, LLC

S.29-19s-33w Scott, KS

7851 S. Elat iSt.
Suite 201
Littleton, CO 80120
ATTN: Bill Goff

Bontrager RT 2-29

Job Ticket: 51282

DST#: 1

Test Start: 2013.02.11 @ 08:47:00

GENERAL INFORMATION:

Formation: **Kansas City**

Deviated: No Whipstock: ft (KB)

Time Tool Opened: 10:51:00

Time Test Ended: 15:27:39

Test Type: Conventional Bottom Hole (Initial)

Tester: Chuck Smith

Unit No: 62

Interval: 4128.00 ft (KB) To 4155.00 ft (KB) (TVD)

Reference Elevations: 2991.00 ft (KB)

Total Depth: 4155.00 ft (KB) (TVD)

2986.00 ft (CF)

Hole Diameter: 7.88 inches Hole Condition: Good

KB to GR/CF: 5.00 ft

Serial #: 8018

Inside

Press @ Run Depth: 372.67 psig @ 4129.00 ft (KB)

Capacity: 8000.00 psig

Start Date: 2013.02.11

End Date:

2013.02.11

Last Calib.:

2013.02.11

Start Time: 08:47:02

End Time:

15:27:40

Time On Btm:

2013.02.11 @ 10:49:30

Time Off Btm:

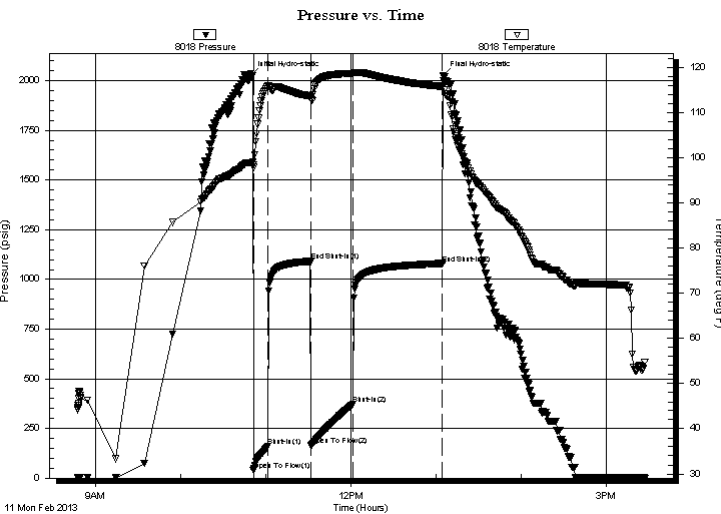
2013.02.11 @ 13:05:09

TEST COMMENT: B.O.B. @ 6 min.

No return.

B.O.B. @ 6 3/4 min.

No return.



PRESSURE SUMMARY

Time (Min.)	Pressure (psig)	Temp (deg F)	Annotation
0	2024.44	98.87	Initial Hydro-static
2	41.05	97.93	Open To Flow (1)
12	158.73	115.95	Shut-In(1)
42	1091.15	113.64	End Shut-In(1)
43	164.16	113.10	Open To Flow (2)
72	372.67	118.76	Shut-In(2)
135	1080.06	115.85	End Shut-In(2)
136	2024.25	116.10	Final Hydro-static

Recovery

Length (ft)	Description	Volume (bbl)
244.00	OSW 100w	2.33
186.00	OSMW 10m 90w	2.61
124.00	OSMW 50m 50w	1.74
92.00	OSM 100m	1.29
0.00	RW .195 @ 37 Degrees F = 73000 PPM	0.00

Gas Rates

Choke (inches)	Pressure (psig)	Gas Rate (Mcf/d)



**TRILOBITE
TESTING, INC.**

DRILL STEM TEST REPORT

FLUID SUMMARY

Cholla Production, LLC

S.29-19s-33w Scott, KS

7851 S. Elat iSt.
Suite 201
Littleton, CO 80120
ATTN: Bill Goff

Bontrager RT 2-29

Job Ticket: 51282

DST#: 1

Test Start: 2013.02.11 @ 08:47:00

Mud and Cushion Information

Mud Type: Gel Chem

Cushion Type:

Oil API:

deg API

Mud Weight: 9.00 lb/gal

Cushion Length:

ft

Water Salinity:

73000 ppm

Viscosity: 55.00 sec/qt

Cushion Volume:

bbbl

Water Loss: 7.20 in³

Gas Cushion Type:

Resistivity: ohm.m

Gas Cushion Pressure:

psig

Salinity: 2400.00 ppm

Filter Cake: 1.00 inches

Recovery Information

Recovery Table

Length ft	Description	Volume bbbl
244.00	OSW 100w	2.330
186.00	OSMW 10m 90w	2.609
124.00	OSMW 50m 50w	1.739
92.00	OSM 100m	1.291
0.00	RW .195 @ 37 Degrees F = 73000 PPM	0.000

Total Length: 646.00 ft Total Volume: 7.969 bbl

Num Fluid Samples: 0

Num Gas Bombs: 0

Serial #:

Laboratory Name:

Laboratory Location:

Recovery Comments: Sampler 100mL M 1900mL W Oil spots 120 psi
23 PPM of H2S detected during fluid recovery.

Pressure vs. Time

