



**TRILOBITE TESTING, INC.**

# DRILL STEM TEST REPORT

Cholla Production, LLC

**S.29-19s-33w Scott, KS**

7851 S. Elat iSt.  
Suite 201  
Littleton, CO 80120  
ATTN: Bill Goff

**Bontrager RT 2-29**

Job Ticket: 51283

**DST#: 2**

Test Start: 2013.02.12 @ 14:18:00

## GENERAL INFORMATION:

Formation: **Pawnee**

Deviated: No Whipstock: ft (KB)

Time Tool Opened: 15:53:30

Time Test Ended: 19:31:09

Test Type: Conventional Bottom Hole (Reset)

Tester: Chuck Smith

Unit No: 62

**Interval: 4440.00 ft (KB) To 4470.00 ft (KB) (TVD)**

Reference Elevations: 2991.00 ft (KB)

Total Depth: 4470.00 ft (KB) (TVD)

2986.00 ft (CF)

Hole Diameter: 7.88 inches Hole Condition: Good

KB to GR/CF: 5.00 ft

**Serial #: 8018 Inside**

Press @ Run Depth: 18.77 psig @ 4441.00 ft (KB)

Capacity: 8000.00 psig

Start Date: 2013.02.12

End Date: 2013.02.12

Last Calib.: 2013.02.12

Start Time: 14:18:02

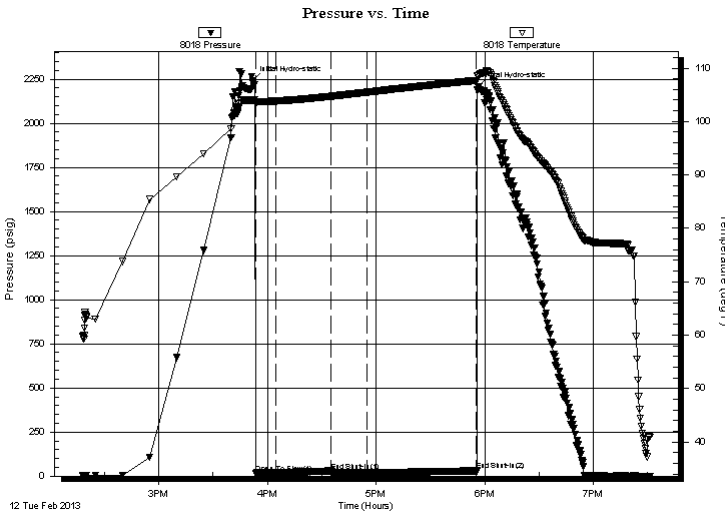
End Time: 19:31:10

Time On Btm: 2013.02.12 @ 15:51:50

Time Off Btm: 2013.02.12 @ 17:56:30

**TEST COMMENT:** Surface blow .  
No return.  
No blow .  
No return.

## PRESSURE SUMMARY



Time (Min.)	Pressure (psig)	Temp (deg F)	Annotation
0	2242.69	103.92	Initial Hydro-static
2	17.35	103.25	Open To Flow (1)
13	18.71	103.83	Shut-In(1)
43	29.65	104.71	End Shut-In(1)
44	18.35	104.71	Open To Flow (2)
64	18.77	105.48	Shut-In(2)
124	30.24	107.68	End Shut-In(2)
125	2207.14	108.52	Final Hydro-static

## Recovery

Length (ft)	Description	Volume (bbl)
1.00	OSM 100m	0.00

\* Recovery from multiple tests

## Gas Rates

Choke (inches)	Pressure (psig)	Gas Rate (Mcf/d)



**TRILOBITE  
TESTING, INC.**

# DRILL STEM TEST REPORT

**FLUID SUMMARY**

Cholla Production, LLC

**S.29-19s-33w Scott, KS**

7851 S. Elat iSt.  
Suite 201  
Littleton, CO 80120  
ATTN: Bill Goff

**Bontrager RT 2-29**

Job Ticket: 51283

**DST#: 2**

Test Start: 2013.02.12 @ 14:18:00

## Mud and Cushion Information

Mud Type: Gel Chem

Cushion Type:

Oil API:

deg API

Mud Weight: 9.00 lb/gal

Cushion Length:

ft

Water Salinity:

ppm

Viscosity: 53.00 sec/qt

Cushion Volume:

bbbl

Water Loss: 7.19 in<sup>3</sup>

Gas Cushion Type:

Resistivity: ohm.m

Gas Cushion Pressure:

psig

Salinity: 3000.00 ppm

Filter Cake: 1.00 inches

## Recovery Information

Recovery Table

Length ft	Description	Volume bbl
1.00	OSM 100m	0.005

Total Length: 1.00 ft      Total Volume: 0.005 bbl

Num Fluid Samples: 0

Num Gas Bombs: 0

Serial #:

Laboratory Name:

Laboratory Location:

Recovery Comments: Sampler: 2000ML m 10 PSI

Serial #: 8018

Inside

Cholla Production, LLC

Bortrager RT-2-29

DST Test Number: 2

### Pressure vs. Time

