



**TRILOBITE  
TESTING, INC.**

# DRILL STEM TEST REPORT

Cholla Production, LLC

**S.29-19s-33w Scott, KS**

7851 S. Elat iSt.  
Suite 201  
Littleton, CO 80120  
ATTN: Bill Goff

**Bontrager RT 2-29**

Job Ticket: 51284

**DST#: 3**

Test Start: 2013.02.13 @ 16:00:00

## GENERAL INFORMATION:

Formation: **Morrow**

Deviated: No Whipstock: ft (KB)

Time Tool Opened: 18:06:50

Time Test Ended: 22:24:20

Test Type: Conventional Bottom Hole (Reset)

Tester: Chuck Smith

Unit No: 62

**Interval: 4635.00 ft (KB) To 4690.00 ft (KB) (TVD)**

Reference Elevations: 2991.00 ft (KB)

Total Depth: 4690.00 ft (KB) (TVD)

2986.00 ft (CF)

Hole Diameter: 7.88 inches Hole Condition: Good

KB to GR/CF: 5.00 ft

**Serial #: 8018**

**Inside**

Press @RunDepth: 26.79 psig @ 4638.00 ft (KB)

Capacity: 8000.00 psig

Start Date: 2013.02.13

End Date:

2013.02.13

Last Calib.:

2013.02.13

Start Time: 16:00:02

End Time:

22:24:20

Time On Btm:

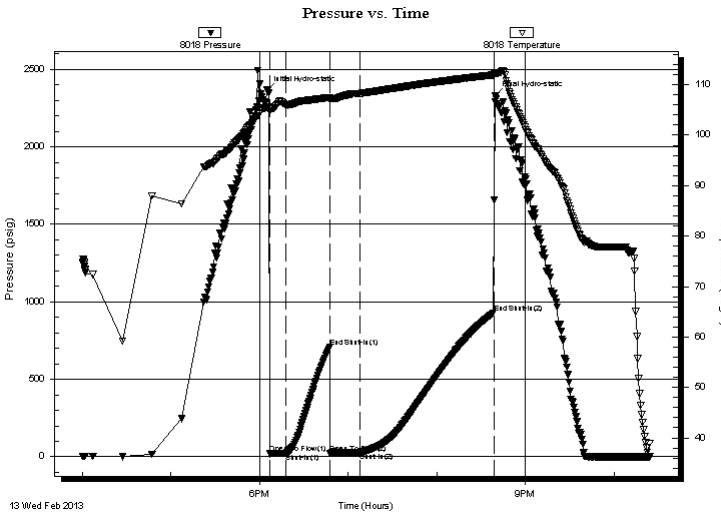
2013.02.13 @ 18:04:50

Time Off Btm:

2013.02.13 @ 20:39:39

**TEST COMMENT:** 1/4" Blow .  
No return.  
No blow .  
No return.

## PRESSURE SUMMARY



Time (Min.)	Pressure (psig)	Temp (deg F)	Annotation
0	2366.16	105.51	Initial Hydro-static
2	19.79	104.63	Open To Flow (1)
13	22.35	106.03	Shut-In(1)
43	710.24	107.50	End Shut-In(1)
43	24.32	107.02	Open To Flow (2)
64	26.79	108.26	Shut-In(2)
154	928.33	111.94	End Shut-In(2)
155	2329.60	112.19	Final Hydro-static

## Recovery

Length (ft)	Description	Volume (bbl)
10.00	OSM 100m	0.05

## Gas Rates

Choke (inches)	Pressure (psig)	Gas Rate (Mcf/d)

\* Recovery from multiple tests



**TRILOBITE  
TESTING, INC.**

# DRILL STEM TEST REPORT

**FLUID SUMMARY**

Cholla Production, LLC

**S.29-19s-33w Scott, KS**

7851 S. Elat iSt.  
Suite 201  
Littleton, CO 80120  
ATTN: Bill Goff

**Bontrager RT 2-29**

Job Ticket: 51284

**DST#: 3**

Test Start: 2013.02.13 @ 16:00:00

## Mud and Cushion Information

Mud Type: Gel Chem

Cushion Type:

Oil API:

deg API

Mud Weight: 9.00 lb/gal

Cushion Length:

ft

Water Salinity:

ppm

Viscosity: 57.00 sec/qt

Cushion Volume:

bbbl

Water Loss: 7.19 in<sup>3</sup>

Gas Cushion Type:

Resistivity: ohm.m

Gas Cushion Pressure:

psig

Salinity: 4100.00 ppm

Filter Cake: 1.00 inches

## Recovery Information

Recovery Table

Length ft	Description	Volume bbl
10.00	OSM 100m	0.049

Total Length: 10.00 ft      Total Volume: 0.049 bbl

Num Fluid Samples: 0

Num Gas Bombs: 0

Serial #:

Laboratory Name:

Laboratory Location:

Recovery Comments: Sampler: 2000 ML osm 100 PSI

# Pressure vs. Time

