



DRILL STEM TEST REPORT

Prepared For: **F.G. Holl Company LLC**

9431 E Central STE 100 Wichita Kansas
67206-2563

ATTN: Frank

Wolf #3-12

12-20s-15w/ Barton

Start Date: 2013.02.09 @ 00:00:00

End Date:

Job Ticket #: 16968

DST #: 1

Superior Testers Enterprises LLC
PO Box 138 Great Bend KS 67530
1-800-792-6902

Printed: 2013.02.09 @ 11:33:49



DRILL STEM TEST REPORT

F.G. Holl Company LLC

12-20s-15w/ Barton

9431 E Central STE 100 Wichita Kansas 67206-2563

Wolf #3-12

Job Ticket: 16968

DST#: 1

ATTN: Frank

Test Start: 2013.02.09 @ 00:00:00

GENERAL INFORMATION:

Formation: **Herrington**

Deviated: No Whipstock: ft (KB)

Time Tool Opened:

Time Test Ended:

Test Type: Conventional Bottom Hole (Initial)

Tester: Shane Konzem

Unit No: 3330- 20/ Great Bend

Interval: 1813.00 ft (KB) To 1900.00 ft (KB) (TVD)

Reference Elevations: 1980.00 ft (KB)

Total Depth: 1900.00 ft (KB) (TVD)

1972.00 ft (CF)

Hole Diameter: 7.88 inches Hole Condition: Fair

KB to GR/CF: 8.00 ft

Serial #: 8400

Press @ RunDepth: 883.29 psia @ ft (KB)

Capacity: psia

Start Date: 2013.02.09

End Date: 2013.02.09

Last Calib.: 1899.12.30

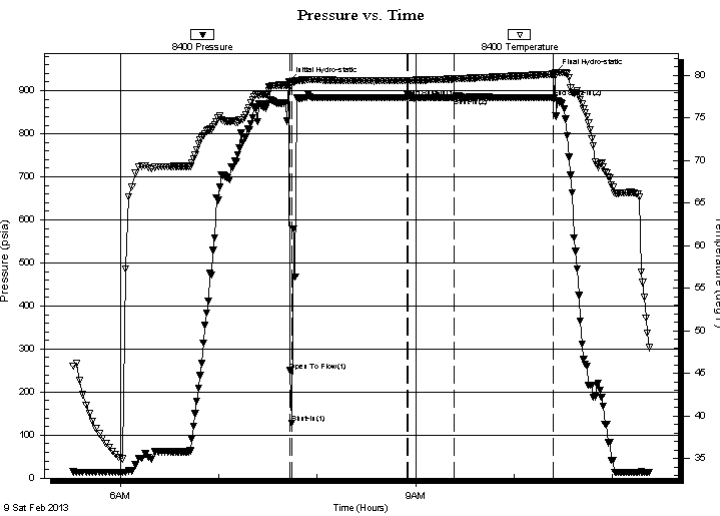
Start Time: 05:30:00

End Time: 11:23:00

Time On Btm: 2013.02.09 @ 07:42:30

Time Off Btm: 2013.02.09 @ 10:25:00

TEST COMMENT: 1st Open/ 10 Minutes. Strong Blow to bottom of 5 gallon bucket in 2 minutes.
 1st Shut In/ 60 Minutes. Slight blow back.
 2nd Open/ 30 Minutes Weak blow built to 2 inchs into the water No Gas to Surface.
 2nd Shut In/ 60 Minutes. slight blow back



PRESSURE SUMMARY

Time (Min.)	Pressure (psia)	Temp (deg F)	Annotation
0	920.24	78.74	Initial Hydro-static
1	249.69	78.73	Open To Flow (1)
2	127.85	79.01	Shut-In(1)
72	883.96	79.39	End Shut-In(1)
73	891.26	79.40	Open To Flow (2)
101	883.68	79.58	Shut-In(2)
162	883.29	80.14	End Shut-In(2)
163	941.00	80.25	Final Hydro-static

Recovery

Length (ft)	Description	Volume (bbl)
200.00	Drilling Mud	2.81

Gas Rates

	Choke (inches)	Pressure (psia)	Gas Rate (Mcf/d)



DRILL STEM TEST REPORT

F.G. Holl Company LLC

12-20s-15w/ Barton

9431 E Central STE 100 Wichita Kansas 67206-2563

Wolf #3-12

Job Ticket: 16968

DST#: 1

ATTN: Frank

Test Start: 2013.02.09 @ 00:00:00

GENERAL INFORMATION:

Formation: **Herrington**

Deviated: No Whipstock: ft (KB)

Time Tool Opened:

Time Test Ended:

Test Type: Conventional Bottom Hole (Initial)

Tester: Shane Konzem

Unit No: 3330- 20/ Great Bend

Interval: 1813.00 ft (KB) To 1900.00 ft (KB) (TVD)

Reference Elevations: 1980.00 ft (KB)

Total Depth: 1900.00 ft (KB) (TVD)

1972.00 ft (CF)

Hole Diameter: 7.88 inches Hole Condition: Fair

KB to GR/CF: 8.00 ft

Serial #: 8405

Press @ RunDepth: 881.51 psia @ ft (KB)

Capacity: psia

Start Date: 2013.02.09

End Date: 2013.02.09

Last Calib.: 1899.12.30

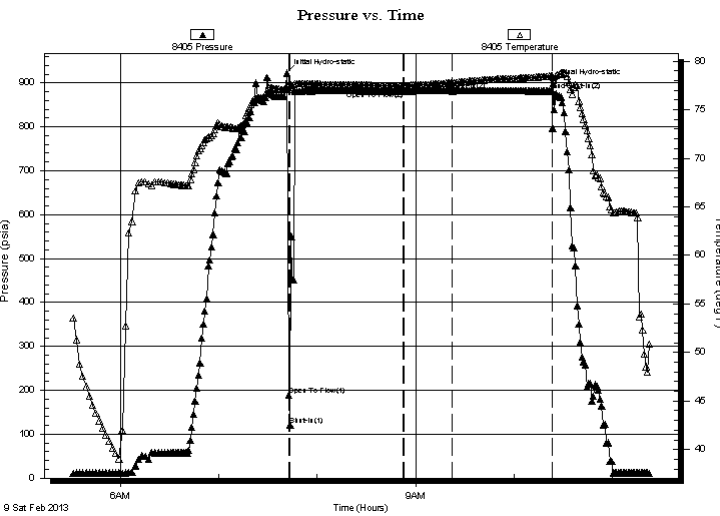
Start Time: 05:30:00

End Time: 11:23:00

Time On Btm: 2013.02.09 @ 07:41:30

Time Off Btm: 2013.02.09 @ 10:24:00

TEST COMMENT: 1st Open/ 10 Minutes. Strong Blow to bottom of 5 gallon bucket in 2 minutes.
 1st Shut In/ 60 Minutes. Slight blow back.
 2nd Open/ 30 Minutes Weak blow built to 2 inchs into the water No Gas to Surface.
 2nd Shut In/ 60 Minutes. slight blow back



PRESSURE SUMMARY

Time (Min.)	Pressure (psia)	Temp (deg F)	Annotation
0	922.43	77.55	Initial Hydro-static
1	189.59	77.14	Open To Flow (1)
2	120.53	77.34	Shut-In(1)
71	881.85	77.49	End Shut-In(1)
72	881.84	77.50	Open To Flow (2)
101	881.82	77.80	Shut-In(2)
162	881.51	78.48	End Shut-In(2)
163	899.22	78.30	Final Hydro-static

Recovery

Length (ft)	Description	Volume (bbl)
200.00	Drilling Mud	2.81

Gas Rates

	Choke (inches)	Pressure (psia)	Gas Rate (Mcf/d)



DRILL STEM TEST REPORT

TOOL DIAGRAM

F.G. Holl Company LLC

12-20s-15w/ Barton

9431 E Central STE 100 Wichita Kansas 67206-2563

Wolf #3-12

Job Ticket: 16968

DST#: 1

ATTN: Frank

Test Start: 2013.02.09 @ 00:00:00

Tool Information

Drill Pipe:	Length: 1800.00 ft	Diameter: 3.80 inches	Volume: 25.25 bbl	Tool Weight: 2000.00 lb
Heavy Wt. Pipe:	Length: 0.00 ft	Diameter: 0.00 inches	Volume: 0.00 bbl	Weight set on Packer: 20000.00 lb
Drill Collar:	Length: 0.00 ft	Diameter: 0.00 inches	Volume: 0.00 bbl	Weight to Pull Loose: lb
			<u>Total Volume: 25.25 bbl</u>	Tool Chased 0.00 ft
Drill Pipe Above KB:	15.00 ft			String Weight: Initial 30000.00 lb
Depth to Top Packer:	1813.00 ft			Final lb
Depth to Bottom Packer:	ft			
Interval between Packers:	88.11 ft			
Tool Length:	116.11 ft			
Number of Packers:	2	Diameter: 6.75 inches		

Tool Comments: miss run tool slid after closing it in

Tool Description	Length (ft)	Serial No.	Position	Depth (ft)	Accum. Lengths
SHut-InTool	5.00		Inside	1790.00	
Hydraulic Tool	5.00			1795.00	
Jars	6.00			1801.00	
Safety Joint	2.00			1803.00	
Packer	5.00			1808.00	28.00 Bottom Of Top Packer
Packer	5.00			1813.00	
Anchor	4.00			1817.00	
Change Over Sub	0.75			1817.75	
Drill Pipe	62.61		Outside	1880.36	
Change Over Sub	0.75		Outside	1881.11	
Anchor	15.00			1896.11	
Recorder	1.00		Inside	1897.11	
Recorder	1.00		Outside	1898.11	
Bullnose	3.00			1901.11	88.11 Bottom Packers & Anchor

Total Tool Length: 116.11



DRILL STEM TEST REPORT

FLUID SUMMARY

F.G. Holl Company LLC

12-20s-15w/ Barton

9431 E Central STE 100 Wichita Kansas 67206-2563

Wolf #3-12

Job Ticket: 16968

DST#: 1

ATTN: Frank

Test Start: 2013.02.09 @ 00:00:00

Mud and Cushion Information

Mud Type: Gel Chem

Cushion Type:

Oil API:

deg API

Mud Weight: 9.00 lb/gal

Cushion Length:

ft

Water Salinity:

ppm

Viscosity: 58.00 sec/qt

Cushion Volume:

bbbl

Water Loss: 6.80 in³

Gas Cushion Type:

Resistivity: ohm.m

Gas Cushion Pressure:

psia

Salinity: 17000.00 ppm

Filter Cake: 1.00 inches

Recovery Information

Recovery Table

Length ft	Description	Volume bbl
200.00	Drilling Mud	2.805

Total Length: 200.00 ft Total Volume: 2.805 bbl

Num Fluid Samples: 0

Num Gas Bombs: 0

Serial #:

Laboratory Name:

Laboratory Location:

Recovery Comments: miss run tool slid after closing it in

