



**TRILOBITE  
TESTING, INC.**

### DRILL STEM TEST REPORT

Prepared For: **Jason Oil Co. LLC**

PO Box 701  
Russell, KS 67665

ATTN: Jeff Lawler

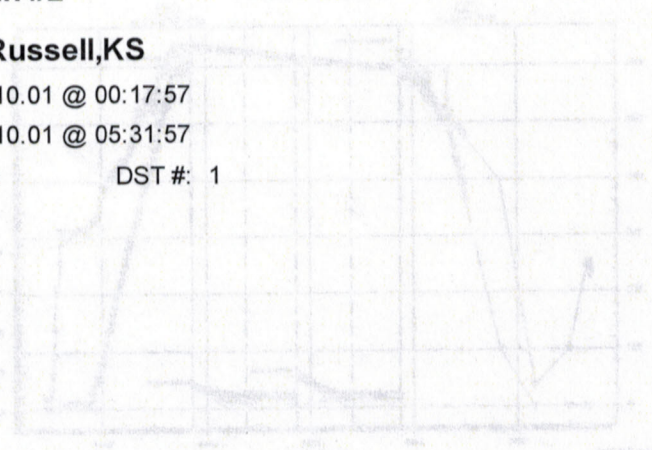
#### Kaufman #2

#### 13-15s-12w Russell,KS

Start Date: 2012.10.01 @ 00:17:57

End Date: 2012.10.01 @ 05:31:57

Job Ticket #: 49449                      DST #: 1



Trilobite Testing, Inc

PO Box 362 Hays, KS 67601

ph: 785-625-4778 fax: 785-625-5620

Jason Oil Co. LLC    13-15s-12w Russell,KS    Kaufman #2    DST # 1    LKC "B-D"    2012.10.01



**TRILOBITE TESTING, INC.**

# DRILL STEM TEST REPORT

Jason Oil Co. LLC

13-15s-12w Russell, KS

PO Box 701  
Russell, KS 67665

**Kaufman #2**

Job Ticket: 49449

**DST#: 1**

ATTN: Jeff Lawler

Test Start: 2012.10.01 @ 00:17:57

## GENERAL INFORMATION:

Formation: **LKC "B-D"**

Deviated: No Whipstock: ft (KB)

Time Tool Opened: 02:07:57

Time Test Ended: 05:31:57

Interval: **3034.00 ft (KB) To 3105.00 ft (KB) (TVD)**

Total Depth: 3105.00 ft (KB) (TVD)

Hole Diameter: 7.88 inches Hole Condition: Good

Test Type: Conventional Bottom Hole (Initial)

Tester: Brian Fairbank

Unit No: 41

Reference Elevations: 1879.00 ft (KB)

1870.00 ft (CF)

KB to GR/CF: 9.00 ft

**Serial #: 6741**

**Outside**

Press@RunDepth: 51.30 psig @ 3037.00 ft (KB)

Start Date: 2012.10.01 End Date: 2012.10.01

Start Time: 00:17:58 End Time: 05:31:57

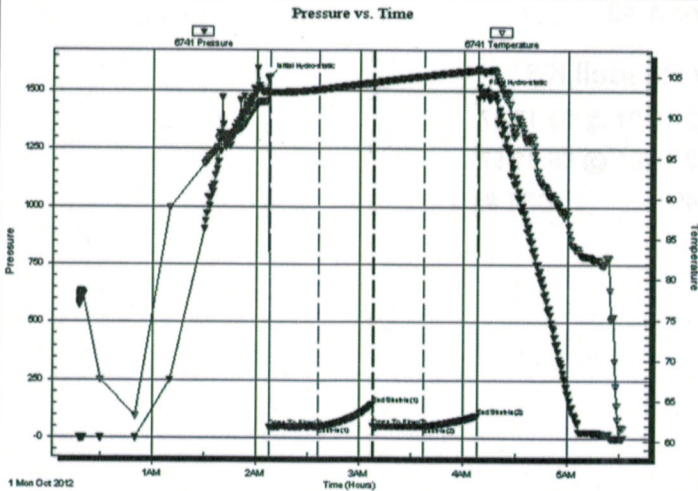
Capacity: 8000.00 psig

Last Calib.: 2012.10.01

Time On Btm: 2012.10.01 @ 02:06:57

Time Off Btm: 2012.10.01 @ 04:09:57

TEST COMMENT: IFP - weak blow throughout 1/2" - 2"  
ISI - no blow back  
FFP - weak sur blow - died 13 min  
FSI - no blow back



## PRESSURE SUMMARY

Time (Min.)	Pressure (psig)	Temp (deg F)	Annotation
0	1556.38	102.84	Initial Hydro-static
1	47.09	102.91	Open To Flow (1)
29	48.75	103.36	Shut-In(1)
61	146.63	104.22	End Shut-In(1)
61	49.66	104.22	Open To Flow (2)
91	51.30	105.06	Shut-In(2)
121	97.01	105.78	End Shut-In(2)
123	1489.48	105.71	Final Hydro-static

## Recovery

Length (ft)	Description	Volume (bbl)
15.00	VSOCM 2%O, 98%M	0.21

## Gas Rates

	Choke (inches)	Pressure (psig)	Gas Rate (Mcf/d)







**TRILOBITE  
TESTING, INC.**

# DRILL STEM TEST REPORT

**TOOL DIAGRAM**

Jason Oil Co. LLC

13-15s-12w Russell, KS

PO Box 701  
Russell, KS 67665

**Kaufman #2**

Job Ticket: 49449

**DST#: 1**

ATTN: Jeff Lawler

Test Start: 2012.10.01 @ 00:17:57

**Tool Information**

Drill Pipe:	Length: 3027.00 ft	Diameter: 3.80 inches	Volume: 42.46 bbl	Tool Weight: 2500.00 lb
Heavy Wt. Pipe:	Length: 0.00 ft	Diameter: 0.00 inches	Volume: 0.00 bbl	Weight set on Packer: 25000.00 lb
Drill Collar:	Length: 0.00 ft	Diameter: 0.00 inches	Volume: 0.00 bbl	Weight to Pull Loose: 35000.00 lb
			<u>Total Volume: 42.46 bbl</u>	Tool Chased 0.00 ft
Drill Pipe Above KB:	13.00 ft			String Weight: Initial 25000.00 lb
Depth to Top Packer:	3034.00 ft			Final 25000.00 lb
Depth to Bottom Packer:	ft			
Interval between Packers:	71.00 ft			
Tool Length:	91.00 ft			
Number of Packers:	2	Diameter: 6.75 inches		

Tool Comments:

Tool Description	Length (ft)	Serial No.	Position	Depth (ft)	Accum. Lengths
------------------	-------------	------------	----------	------------	----------------

Shut In Tool	5.00			3019.00	
Hydraulic tool	5.00			3024.00	
Packer	5.00			3029.00	20.00 Bottom Of Top Packer
Packer	5.00			3034.00	
Stubb	1.00			3035.00	
Perforations	1.00			3036.00	
Change Over Sub	1.00			3037.00	
Recorder	0.00	6752	Inside	3037.00	
Recorder	0.00	6741	Outside	3037.00	
Blank Spacing	63.00			3100.00	
Change Over Sub	1.00			3101.00	
Perforations	1.00			3102.00	
Bullnose	3.00			3105.00	71.00 Bottom Packers & Anchor

**Total Tool Length: 91.00**





**TRILOBITE  
TESTING, INC.**

## DRILL STEM TEST REPORT

FLUID SUMMARY

Jason Oil Co. LLC

13-15s-12w Russell, KS

PO Box 701  
Russell, KS 67665

Kaufman #2

Job Ticket: 49449

DST#: 1

ATTN: Jeff Lawler

Test Start: 2012.10.01 @ 00:17:57

### Mud and Cushion Information

Mud Type:	Gel Chem	Cushion Type:		Oil API:		deg API
Mud Weight:	9.00 lb/gal	Cushion Length:	ft	Water Salinity:		ppm
Viscosity:	50.00 sec/qt	Cushion Volume:	bbl			
Water Loss:	9.16 in <sup>3</sup>	Gas Cushion Type:				
Resistivity:	ohm.m	Gas Cushion Pressure:	psig			
Salinity:	4000.00 ppm					
Filter Cake:	inches					

### Recovery Information

Recovery Table

Length ft	Description	Volume bbl
15.00	VSOCM 2%O, 98%M	0.210

Total Length: 15.00 ft      Total Volume: 0.210 bbl

Num Fluid Samples: 0

Num Gas Bombs: 0

Serial #:

Laboratory Name:

Laboratory Location:

Recovery Comments:

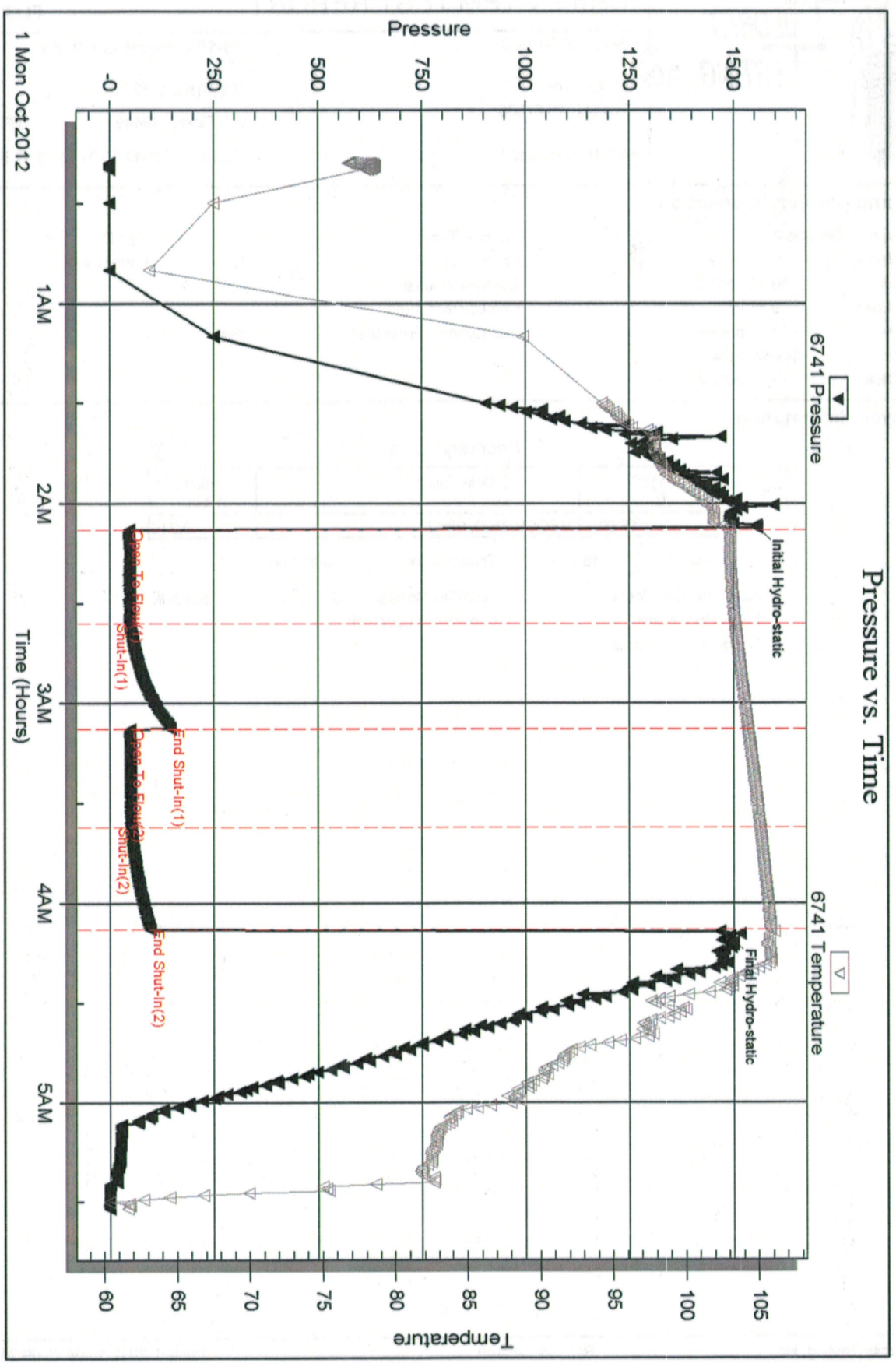
Serial #: 6741

Outside Jason Oil Co. LLC

Kaufman #2

DST Test Number: 1

### Pressure vs. Time



Triolobe Testing, Inc

Ref. No: 49449

Printed: 2012.10.04 @ 09:26:58



Serial #: 6752

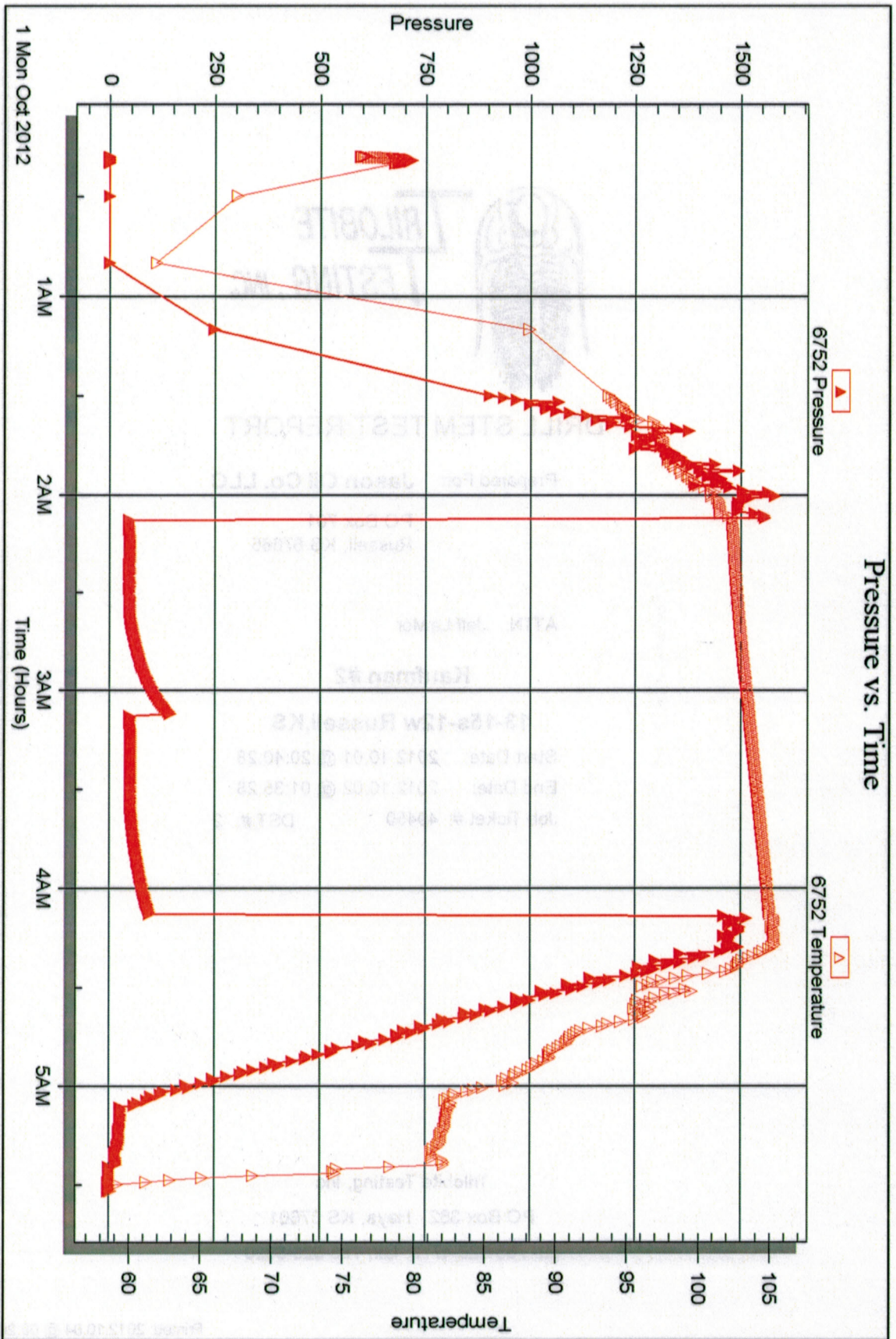
Inside

Jason Oil Co. LLC

Kaufman #2

DST Test Number: 1

### Pressure vs. Time



Trilobite Testing, Inc

Ref. No: 49449

Printed: 2012.10.04 @ 09:26:59



**TRILOBITE  
TESTING, INC.**

## DRILL STEM TEST REPORT

Prepared For: **Jason Oil Co. LLC**

PO Box 701  
Russell, KS 67665

ATTN: Jeff Lawler

### **Kaufman #2**

### **13-15s-12w Russell,KS**

Start Date: 2012.10.01 @ 20:40:28

End Date: 2012.10.02 @ 01:35:28

Job Ticket #: 49450                      DST #: 2

Trilobite Testing, Inc

PO Box 362 Hays, KS 67601

ph: 785-625-4778 fax: 785-625-5620

Printed: 2012.10.04 @ 09:26:09

Jason Oil Co. LLC

13-15s-12w Russell,KS

Kaufman #2

DST # 2

LKC "H-L"

2012.10.01





**TRILOBITE  
TESTING, INC.**

# DRILL STEM TEST REPORT

Jason Oil Co. LLC

13-15s-12w Russell, KS

PO Box 701  
Russell, KS 67665

**Kaufman #2**

Job Ticket: 49450

DST#: 2

ATTN: Jeff Lawler

Test Start: 2012.10.01 @ 20:40:28

## GENERAL INFORMATION:

Formation: **LKC "H-L"**

Deviated: No Whipstock: ft (KB)

Time Tool Opened: 22:04:08

Time Test Ended: 01:35:28

Test Type: Conventional Bottom Hole (Reset)

Tester: Brian Fairbank

Unit No: 41

Interval: **3170.00 ft (KB) To 3300.00 ft (KB) (TVD)**

Total Depth: 3300.00 ft (KB) (TVD)

Hole Diameter: 7.88 inches Hole Condition: Good

Reference Elevations: 1879.00 ft (KB)

1870.00 ft (CF)

KB to GR/CF: 9.00 ft

**Serial #: 6752**

Inside

Press@RunDepth: 77.65 psig @ 3176.00 ft (KB)

Start Date: 2012.10.01

End Date:

2012.10.02

Start Time: 20:40:29

End Time:

01:35:28

Capacity: 8000.00 psig

Last Calib.: 2012.10.02

Time On Btm: 2012.10.01 @ 22:03:08

Time Off Btm: 2012.10.02 @ 00:04:48

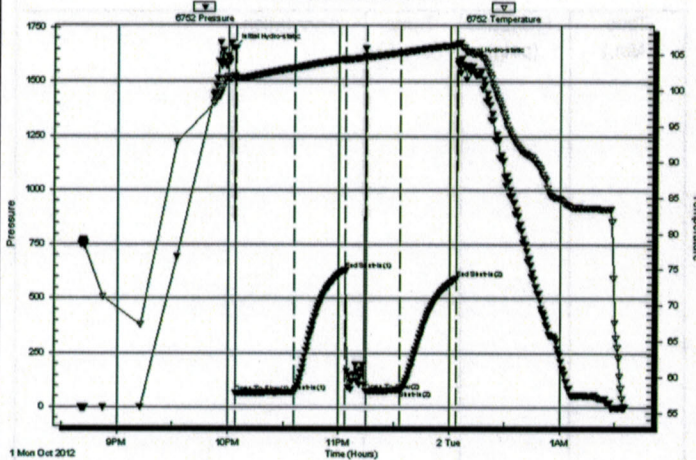
TEST COMMENT: IFP - weak blow throughout 1/2" - 1 1/4"

ISI - no blow back

FFP - no blow - flush - sur blow

FSI - no blow back

Pressure vs. Time



PRESSURE SUMMARY

Time (Min.)	Pressure (psig)	Temp (deg F)	Annotation
0	1657.96	101.94	Initial Hydro-static
1	64.83	101.71	Open To Flow (1)
33	70.41	103.06	Shut-In(1)
61	633.70	104.32	End Shut-In(1)
72	74.52	104.60	Open To Flow (2)
90	77.65	105.22	Shut-In(2)
121	592.63	106.34	End Shut-In(2)
122	1594.93	106.53	Final Hydro-static

## Recovery

Length (ft)	Description	Volume (bbl)
30.00	DRL MUD 100%	0.42

\* Recovery from multiple tests

## Gas Rates

	Choke (inches)	Pressure (psig)	Gas Rate (Mcf/d)









**TRILOBITE  
TESTING, INC.**

# DRILL STEM TEST REPORT

**TOOL DIAGRAM**

Jason Oil Co. LLC

**13-15s-12w Russell, KS**

PO Box 701  
Russell, KS 67665

**Kaufman #2**

Job Ticket: 49450

**DST#: 2**

ATTN: Jeff Lawler

Test Start: 2012.10.01 @ 20:40:28

## Tool Information

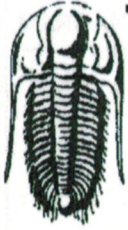
Drill Pipe:	Length: 3155.00 ft	Diameter: 3.80 inches	Volume: 44.26 bbl	Tool Weight: 2500.00 lb
Heavy Wt. Pipe:	Length: 0.00 ft	Diameter: 0.00 inches	Volume: 0.00 bbl	Weight set on Packer: 25000.00 lb
Drill Collar:	Length: 0.00 ft	Diameter: 0.00 inches	Volume: 0.00 bbl	Weight to Pull Loose: 50000.00 lb
			<u>Total Volume: 44.26 bbl</u>	Tool Chased 0.00 ft
Drill Pipe Above KB:	5.00 ft			String Weight: Initial 28000.00 lb
Depth to Top Packer:	3170.00 ft			Final 28000.00 lb
Depth to Bottom Packer:	ft			
Interval between Packers:	130.00 ft			
Tool Length:	150.00 ft			
Number of Packers:	2	Diameter: 6.75 inches		

Tool Comments:

## Tool Description

Tool Description	Length (ft)	Serial No.	Position	Depth (ft)	Accum. Lengths
Shut In Tool	5.00			3155.00	
Hydraulic tool	5.00			3160.00	
Packer	5.00			3165.00	20.00 Bottom Of Top Packer
Packer	5.00			3170.00	
Stubb	1.00			3171.00	
Perforations	4.00			3175.00	
Change Over Sub	1.00			3176.00	
Recorder	0.00	6752	Inside	3176.00	
Recorder	0.00	6741	Outside	3176.00	
Blank Spacing	95.00			3271.00	
Change Over Sub	1.00			3272.00	
Perforations	25.00			3297.00	
Bullnose	3.00			3300.00	130.00 Bottom Packers & Anchor

**Total Tool Length: 150.00**



**TRILOBITE  
TESTING, INC.**

# DRILL STEM TEST REPORT

**FLUID SUMMARY**

Jason Oil Co. LLC

**13-15s-12w Russell,KS**

PO Box 701  
Russell, KS 67665

**Kaufman #2**

Job Ticket: 49450

**DST#: 2**

ATTN: Jeff Lawler

Test Start: 2012.10.01 @ 20:40:28

## Mud and Cushion Information

Mud Type:	Gel Chem	Cushion Type:		Oil API:	deg API
Mud Weight:	9.00 lb/gal	Cushion Length:	ft	Water Salinity:	ppm
Viscosity:	46.00 sec/qt	Cushion Volume:	bbl		
Water Loss:	10.38 in <sup>3</sup>	Gas Cushion Type:			
Resistivity:	ohm.m	Gas Cushion Pressure:	psig		
Salinity:	5000.00 ppm				
Filter Cake:	inches				

## Recovery Information

Recovery Table

Length ft	Description	Volume bbl
30.00	DRL MUD 100%	0.421

Total Length: 30.00 ft      Total Volume: 0.421 bbl

Num Fluid Samples: 0

Num Gas Bombs: 0

Serial #:

Laboratory Name:

Laboratory Location:

Recovery Comments:



Serial #: 6752

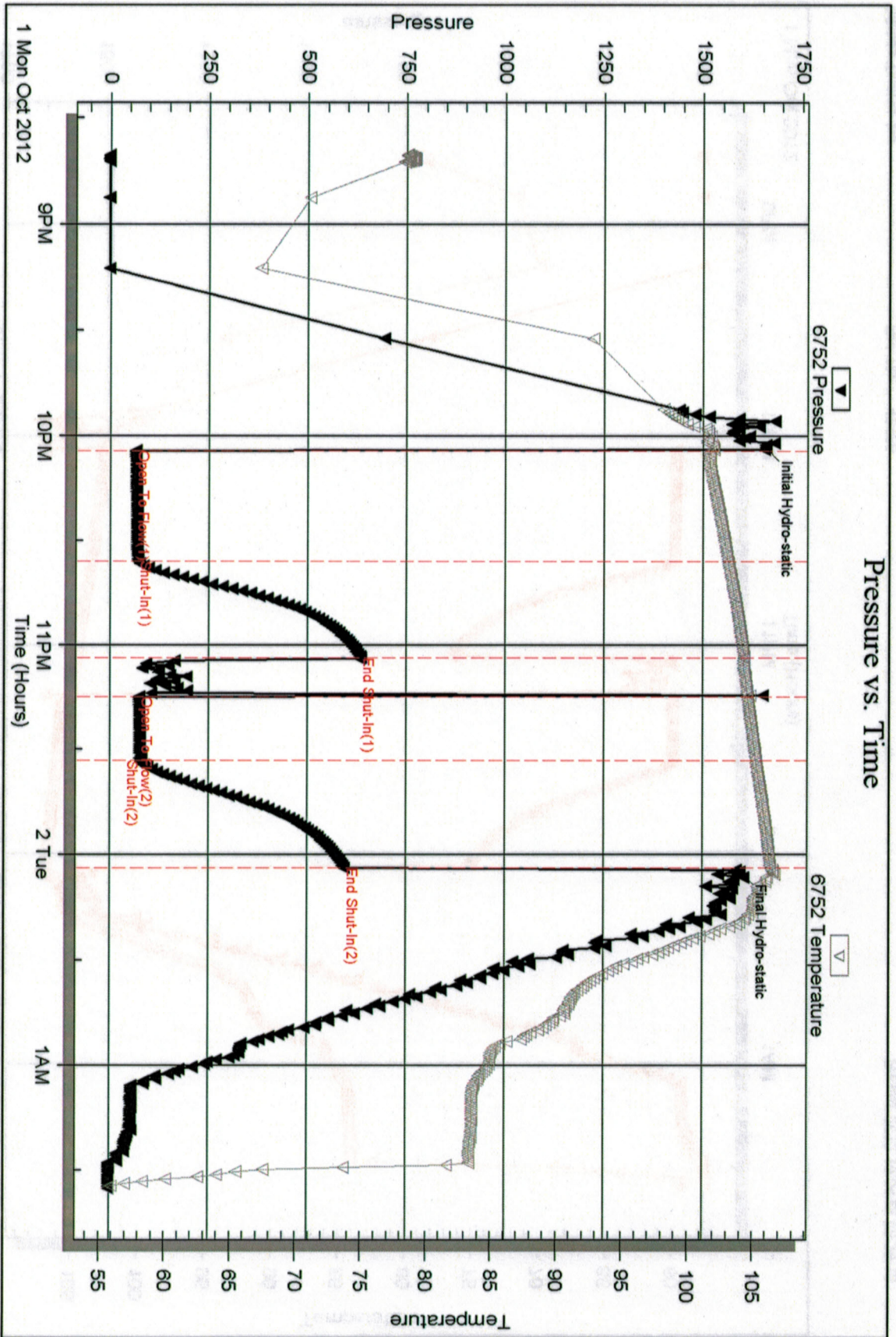
Inside

Jason Oil Co. LLC

Kaufman #2

DST Test Number: 2

### Pressure vs. Time



Trilobite Testing, Inc

Ref. No: 49450

Printed: 2012.10.04 @ 09:26:13

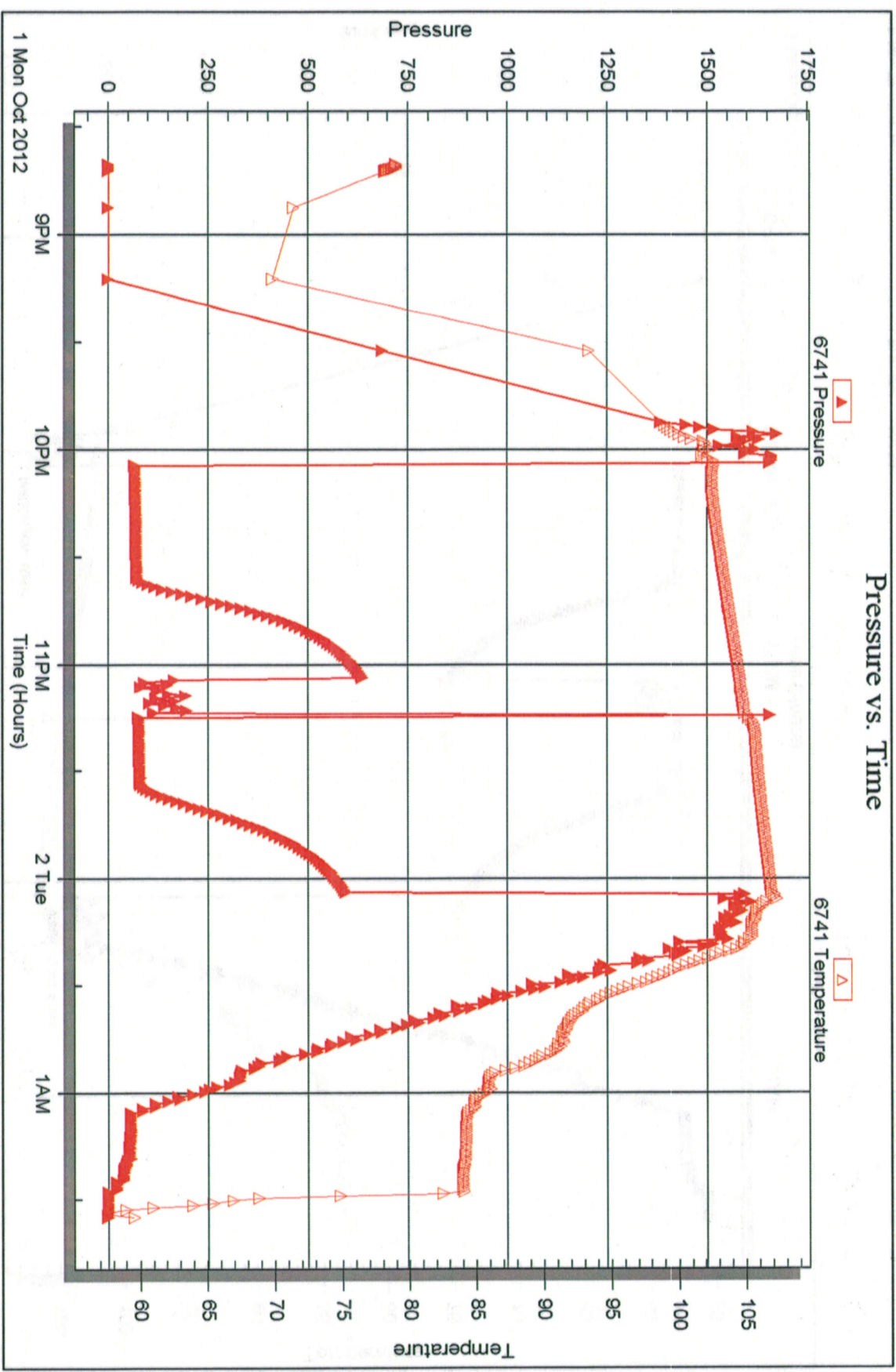
Serial #: 6741

Outside Jason Oil Co. LLC

Kaufman #2

DST Test Number: 2

### Pressure vs. Time



Trilobite Testing, Inc

Ref. No: 49450

Printed: 2012.10.04 @ 09:26:13





**TRILOBITE  
TESTING, INC.**

**DRILL STEM TEST REPORT**

Prepared For: **Jason Oil Co. LLC**

PO Box 701  
Russell, KS 67665

ATTN: Jeff Lawler

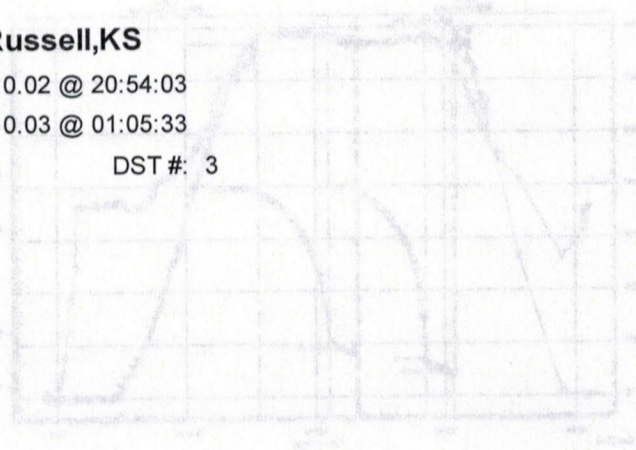
**Kaufman #2**

**13-15s-12w Russell,KS**

Start Date: 2012.10.02 @ 20:54:03

End Date: 2012.10.03 @ 01:05:33

Job Ticket #: 48626                      DST #: 3



Trilobite Testing, Inc

PO Box 362 Hays, KS 67601

ph: 785-625-4778 fax: 785-625-5620

Jason Oil Co. LLC 13-15s-12w Russell,KS Kaufman #2 DST # 3 Arbuckle 2012.10.02



**TRILOBITE  
TESTING, INC.**

# DRILL STEM TEST REPORT

Jason Oil Co. LLC

13-15s-12w Russell, KS

PO Box 701  
Russell, KS 67665

**Kaufman #2**

Job Ticket: 48626

DST#: 3

ATTN: Jeff Lawler

Test Start: 2012.10.02 @ 20:54:03

## GENERAL INFORMATION:

Formation: **Arbuckle**  
 Deviated: No Whipstock: ft (KB)  
 Time Tool Opened: 21:56:03  
 Time Test Ended: 01:05:33

Test Type: Conventional Straddle (Reset)  
 Tester: Brian Fairbank  
 Unit No: 41

Interval: **3325.00 ft (KB) To 3387.00 ft (KB) (TVD)**  
 Total Depth: 3421.00 ft (KB) (TVD)  
 Hole Diameter: 7.88 inches Hole Condition: Good

Reference Elevations: 1879.00 ft (KB)  
 1870.00 ft (CF)  
 KB to GR/CF: 9.00 ft

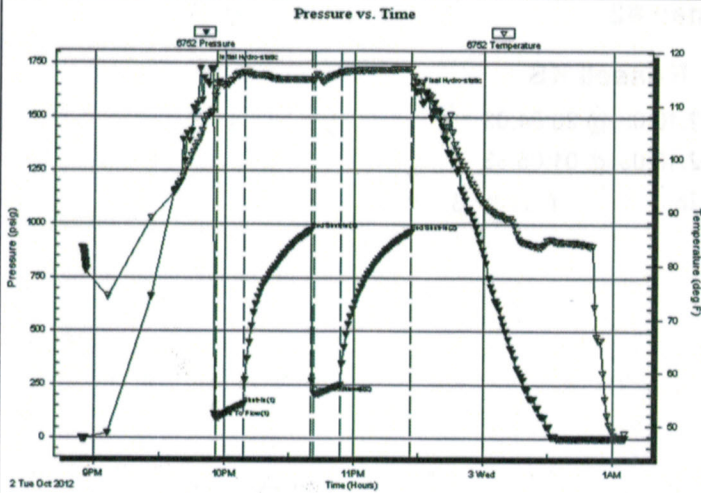
## Serial #: 6752

Inside

Press@RunDepth: 248.71 psig @ 3333.00 ft (KB)  
 Start Date: 2012.10.02 End Date: 2012.10.03  
 Start Time: 20:54:04 End Time: 01:05:33

Capacity: 8000.00 psig  
 Last Calib.: 2012.10.03  
 Time On Btm: 2012.10.02 @ 21:54:03  
 Time Off Btm: 2012.10.02 @ 23:29:03

TEST COMMENT: IFP - BOB 75 sec  
 ISI - no blow back  
 FFP - BOB 3 min  
 FSI - no blow back



## PRESSURE SUMMARY

Time (Min.)	Pressure (psig)	Temp (deg F)	Annotation
0	1724.55	108.57	Initial Hydro-static
2	94.73	112.90	Open To Flow (1)
15	158.31	115.99	Shut-In(1)
46	970.40	114.79	End Shut-In(1)
48	210.62	114.66	Open To Flow (2)
60	248.71	116.07	Shut-In(2)
93	963.64	116.79	End Shut-In(2)
95	1621.88	114.28	Final Hydro-static

## Recovery

Length (ft)	Description	Volume (bbl)
155.00	MW 80%W, 20%M	2.17
90.00	WM 30%W, 70%M	1.26
230.00	DRL MUD w/ scum O 100%m	3.23

\* Recovery from multiple tests

## Gas Rates

	Choke (inches)	Pressure (psig)	Gas Rate (Mcf/d)













**TRILOBITE  
TESTING, INC.**

# DRILL STEM TEST REPORT

**TOOL DIAGRAM**

Jason Oil Co. LLC

13-15s-12w Russell, KS

PO Box 701  
Russell, KS 67665

**Kaufman #2**

Job Ticket: 48626

**DST#: 3**

ATTN: Jeff Lawler

Test Start: 2012.10.02 @ 20:54:03

## Tool Information

Drill Pipe:	Length: 3314.00 ft	Diameter: 3.80 inches	Volume: 46.49 bbl	Tool Weight: 3000.00 lb
Heavy Wt. Pipe:	Length: 0.00 ft	Diameter: 0.00 inches	Volume: 0.00 bbl	Weight set on Packer: 30000.00 lb
Drill Collar:	Length: 0.00 ft	Diameter: 0.00 inches	Volume: 0.00 bbl	Weight to Pull Loose: 32000.00 lb
			<b>Total Volume: 46.49 bbl</b>	Tool Chased 0.00 ft
Drill Pipe Above KB:	9.00 ft			String Weight: Initial 28000.00 lb
Depth to Top Packer:	3325.00 ft			Final 30000.00 lb
Depth to Bottom Packer:	3387.00 ft			
Interval between Packers:	62.00 ft			
Tool Length:	121.00 ft			
Number of Packers:	3	Diameter: 6.75 inches		

Tool Comments:

Tool Description	Length (ft)	Serial No.	Position	Depth (ft)	Accum. Lengths
------------------	-------------	------------	----------	------------	----------------

Shut In Tool	5.00			3310.00	
Hydraulic tool	5.00			3315.00	
Packer	5.00			3320.00	20.00 Bottom Of Top Packer
Packer	5.00			3325.00	
Stubb	1.00			3326.00	
Perforations	7.00			3333.00	
Recorder	0.00	6752	Inside	3333.00	
Recorder	0.00	6741	Outside	3333.00	
Change Over Sub	1.00			3334.00	
Blank Spacing	32.00			3366.00	
Change Over Sub	1.00			3367.00	
Perforations	15.00			3382.00	
Blank Off Sub	1.00			3383.00	
Blank Spacing	4.00			3387.00	62.00 Tool Interval
Packer	5.00			3392.00	
Stubb	1.00			3393.00	
Recorder	0.00	8734	Below	3393.00	
Change Over Sub	1.00			3394.00	
Blank Spacing	32.00			3426.00	39.00 Bottom Packers & Anchor

**Total Tool Length: 121.00**



**TRILOBITE  
TESTING, INC.**

# DRILL STEM TEST REPORT

**FLUID SUMMARY**

Jason Oil Co. LLC

13-15s-12w Russell,KS

PO Box 701  
Russell, KS 67665

**Kaufman #2**

Job Ticket: 48626

DST#: 3

ATTN: Jeff Lawler

Test Start: 2012.10.02 @ 20:54:03

## Mud and Cushion Information

Mud Type: Gel Chem	Cushion Type:	Oil API:	deg API
Mud Weight: 9.00 lb/gal	Cushion Length: ft	Water Salinity:	23000 ppm
Viscosity: 52.00 sec/qt	Cushion Volume: bbl		
Water Loss: 9.59 in <sup>3</sup>	Gas Cushion Type:		
Resistivity: ohm.m	Gas Cushion Pressure: psig		
Salinity: 4000.00 ppm			
Filter Cake: inches			

## Recovery Information

Recovery Table

Length ft	Description	Volume bbl
155.00	MW 80%W, 20%M	2.174
90.00	WM 30%W, 70%M	1.262
230.00	DRL MUD w / scum O 100%m	3.226

Total Length: 475.00 ft      Total Volume: 6.662 bbl

Num Fluid Samples: 0

Num Gas Bombs: 0

Serial #:

Laboratory Name:

Laboratory Location:

Recovery Comments:



Serial #: 6752

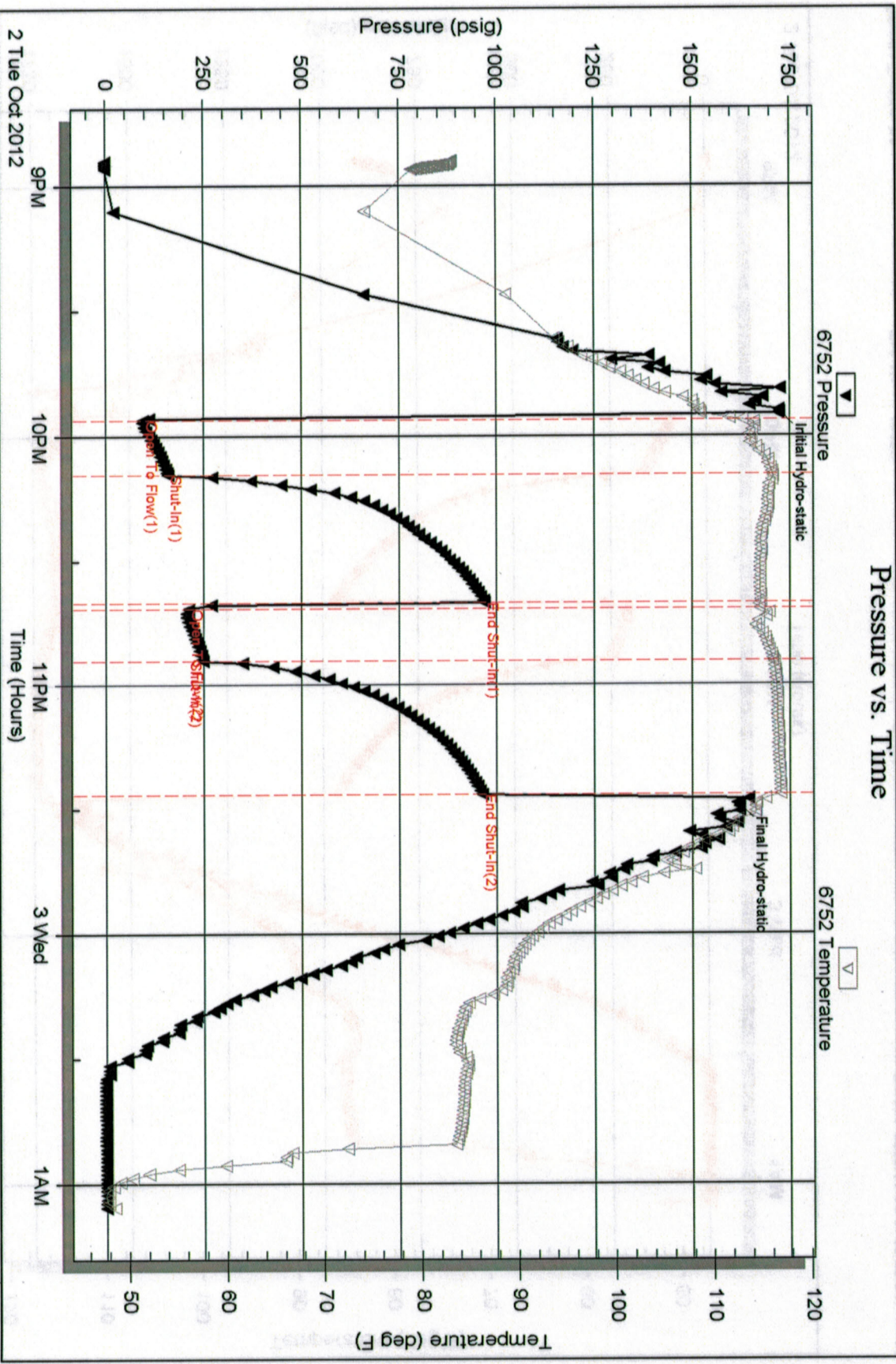
Inside

Jason Oil Co. LLC

Kaufman #2

DST Test Number: 3

### Pressure vs. Time



Trilobite Testing, Inc

Ref. No: 48626

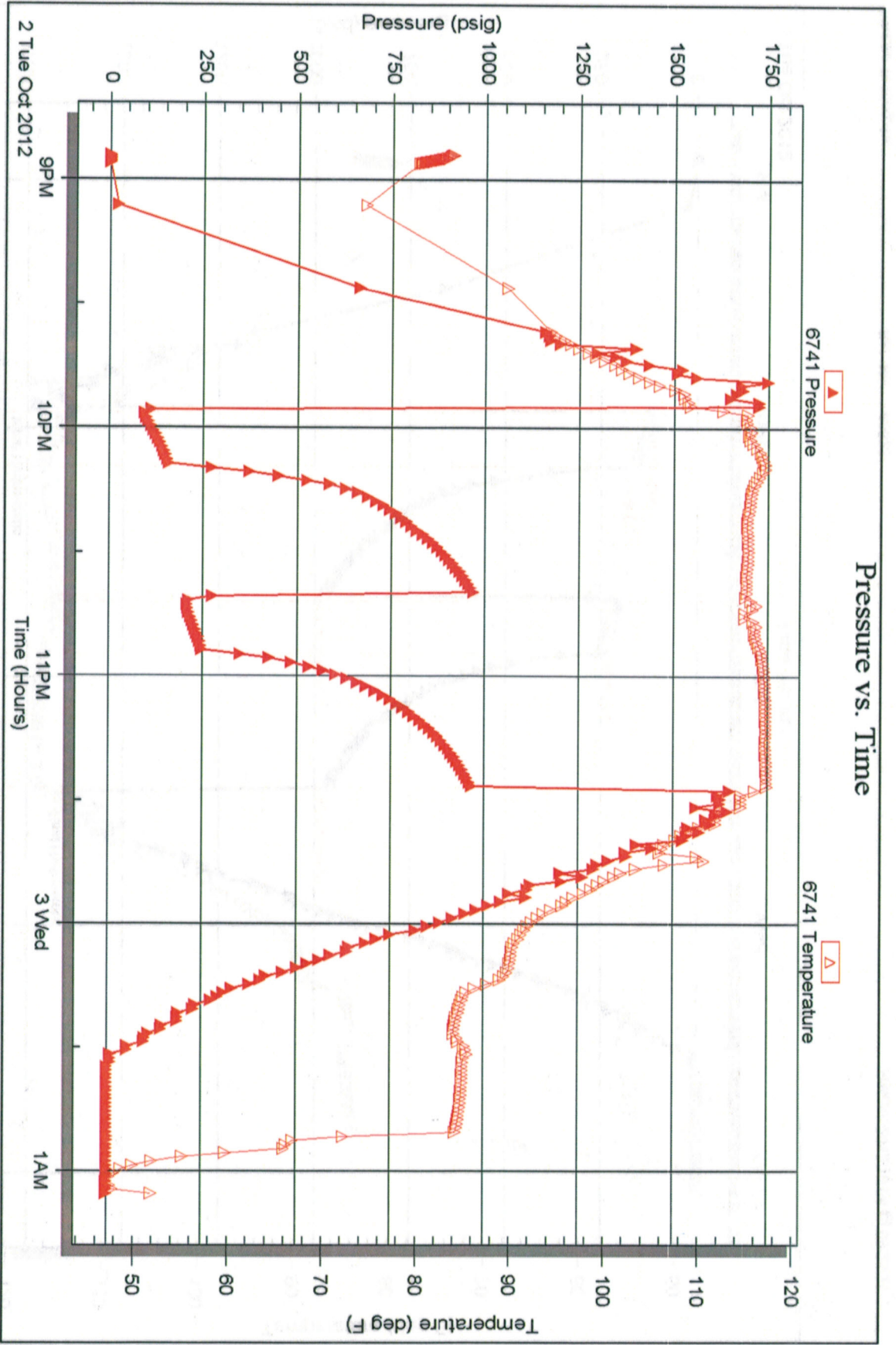
Printed: 2012.10.04 @ 09:25:21

Serial #: 6741

Outside Jason Oil Co. LLC

Kaufman #2

DST Test Number: 3





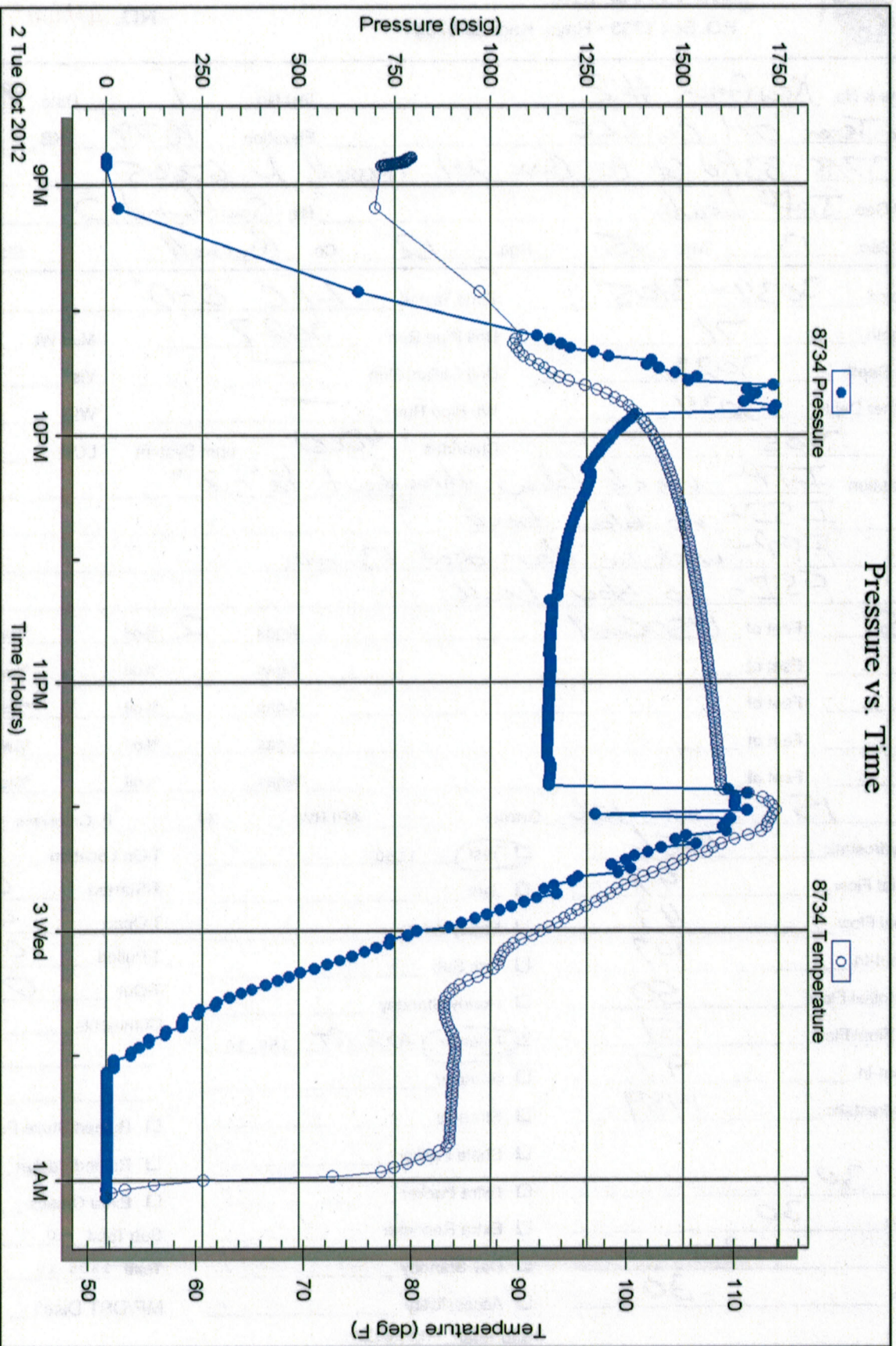
Serial #: 8734

Below (Straddler) Oil Co. LLC

Kaufman #2

DST Test Number: 3

### Pressure vs. Time



Triobite Testing, Inc

Ref. No: 48626

Printed: 2012.10.04 @ 09:25:22





# TRILOBITE TESTING INC.

P.O. Box 1733 • Hays, Kansas 67601

## Test Ticket

NO. 49449

Well Name & No. Kaufman #2 Test No. 1 Date 9-30-12  
 Company Jason Oil Co. LLC Elevation 1879 KB 1870 GL  
 Address 3718-83RD St PO Box 701 Russell, K 67665  
 Co. Rep / Geo. Jeff Lawler Rig Southwind 2  
 Location: Sec. 13 Twp. 15 Rge. 12 Co. Russell State K

Interval Tested 3034-3105 Zone Tested LKC "B-D"  
 Anchor Length 71 Drill Pipe Run 3027 Mud Wt. 8.9  
 Top Packer Depth 3029 Drill Collars Run — Vis 50  
 Bottom Packer Depth 3034 Wt. Pipe Run — WL 9.2  
 Total Depth 3105 Chlorides 4000 ppm System LCM —

Blow Description IFP - weak blow throughout 1/2" - 2"  
ISI - no blow back  
FFP - weak sur blow - died 13 min  
FSI - no blow back

Rec	Feet of	%gas	%oil	%water	%mud
<u>15</u>	<u>USOCM</u>	<u>2</u>		<u>98</u>	
Rec	Feet of	%gas	%oil	%water	%mud
Rec	Feet of	%gas	%oil	%water	%mud
Rec	Feet of	%gas	%oil	%water	%mud
Rec	Feet of	%gas	%oil	%water	%mud

Rec Total 15 BHT 106 Gravity — API RW — @ — °F Chlorides — ppm

(A) Initial Hydrostatic	<u>1556</u>	<input checked="" type="checkbox"/> Test	<u>1150</u>	T-On Location	<u>2252</u>
(B) First Initial Flow	<u>47</u>	<input type="checkbox"/> Jars		T-Started	<u>0017</u>
(C) First Final Flow	<u>49</u>	<input type="checkbox"/> Safety Joint		T-Open	<u>0207</u>
(D) Initial Shut-In	<u>147</u>	<input type="checkbox"/> Circ Sub		T-Pulled	<u>0407</u>
(E) Second Initial Flow	<u>50</u>	<input type="checkbox"/> Hourly Standby		T-Out	<u>0531</u>
(F) Second Final Flow	<u>51</u>	<input checked="" type="checkbox"/> Mileage	<u>102 RT</u> 158.10	Comments	
(G) Final Shut-In	<u>97</u>	<input type="checkbox"/> Sampler			
(H) Final Hydrostatic	<u>1489</u>	<input type="checkbox"/> Straddle			

Initial Open 30  
 Initial Shut-In 30  
 Final Flow 30  
 Final Shut-In 30

Ruined Shale Packer  
 Ruined Packer  
 Extra Copies  
 Sub Total 0  
 Total 1308.10  
 MP/DST Disc't —  
 Sub Total 1308.10

Approved By \_\_\_\_\_ Our Representative Brian Fairbank  
 Trilobite Testing Inc. shall not be liable for damaged of any kind of the property or personnel of the one for whom a test is made, or for any loss suffered or sustained, directly or indirectly, through the use of its equipment, or its statements or opinion concerning the results of any test, tools lost or damaged in the hole shall be paid for at cost by the party for whom the test is made.





# TRILOBITE TESTING INC.

P.O. Box 1733 • Hays, Kansas 67601

## Test Ticket

NO. 49450

Well Name & No. Kaufman #2 Test No. 2 Date 10-1-12  
 Company Jason Oil Elevation 1879 KB 1870 GL  
 Address \_\_\_\_\_  
 Co. Rep / Geo. Jeff Lowler Rig Southwind 2  
 Location: Sec. 13 Twp. 15 Rge. 12 Co. Russell State K

Interval Tested 3270-3300 Zone Tested LKC "H-L"  
 Anchor Length 130 Drill Pipe Run 3155 Mud Wt. 9.2  
 Top Packer Depth 3265 Drill Collars Run — Vis 46  
 Bottom Packer Depth 3270 Wt. Pipe Run — WL 10.4  
 Total Depth 3300 Chlorides 5000 ppm System LCM \_\_\_\_\_  
 Blow Description IFP - weak blow throughout 1/2" - 1 1/4"  
ISI - no blow back  
FFP - no blow - flush - sur blow  
FSL - no blow back

Rec	Feet of	%gas	%oil	%water	%mud
<u>30</u>	<u>del mud</u>			<u>100</u>	
Rec	Feet of	%gas	%oil	%water	%mud
Rec	Feet of	%gas	%oil	%water	%mud
Rec	Feet of	%gas	%oil	%water	%mud
Rec	Feet of	%gas	%oil	%water	%mud

Rec Total 30 BHT 106 Gravity \_\_\_\_\_ API RW \_\_\_\_\_ @ \_\_\_\_\_ °F Chlorides \_\_\_\_\_ ppm

(A) Initial Hydrostatic 1658  Test 1150 T-On Location 2020  
 (B) First Initial Flow 65  Jars T-Started 2040  
 (C) First Final Flow 70  Safety Joint T-Open 2205  
 (D) Initial Shut-In 634  Circ Sub T-Pulled 0005  
 (E) Second Initial Flow 75  Hourly Standby T-Out 0137  
 (F) Second Final Flow 78  Mileage 158.10 Comments \_\_\_\_\_  
 (G) Final Shut-In 593  Sampler \_\_\_\_\_  
 (H) Final Hydrostatic 1595  Straddle  Ruined Shale Packer \_\_\_\_\_  
 Shale Packer \_\_\_\_\_  Ruined Packer \_\_\_\_\_  
 Extra Packer \_\_\_\_\_  Extra Copies \_\_\_\_\_  
 Extra Recorder \_\_\_\_\_ Sub Total 0  
 Day Standby \_\_\_\_\_ Total 1308.10  
 Accessibility \_\_\_\_\_ MP/DST Disc't \_\_\_\_\_  
 Sub Total 1308.10

Initial Open 30  
 Initial Shut-In 30  
 Final Flow 30  
 Final Shut-In 30

Approved By \_\_\_\_\_ Our Representative Brian Fairbank

Trilobite Testing Inc. shall not be liable for damaged of any kind of the property or personnel of the one for whom a test is made, or for any loss suffered or sustained, directly or indirectly, through the use of its equipment, or its statements or opinion concerning the results of any test, tools lost or damaged in the hole shall be paid for at cost by the party for whom the test is made.





# TRILOBITE TESTING INC.

P.O. Box 1733 • Hays, Kansas 67601

## Test Ticket

NO. 48626

4/10

Well Name & No. Kaufman #2 Test No. 3 Date 10-2-12  
 Company Jasen Oil Elevation 1879 KB 1870 GL  
 Address \_\_\_\_\_  
 Co. Rep / Geo. Jeff Leuler Rig Southard 2  
 Location: Sec. 13 Twp. 15 Rge. 12 Co. Russell State Ks

Interval Tested 3325-3387 Zone Tested Arbuckle  
 Anchor Length 62 Drill Pipe Run 3314 Mud Wt. 9.3  
 Top Packer Depth 3220 Drill Collars Run \_\_\_\_\_ Vis 52  
 Bottom Packer Depth 3225 Wt. Pipe Run \_\_\_\_\_ WL 9.6  
 Total Depth 3421 Chlorides 4000 ppm System LCM \_\_\_\_\_  
 Blow Description IFP- BOB 75 sec  
ISI- no blow back  
FFP- BOB 15 min  
FSI- no blow back

Rec	Feet of	%gas	%oil	%water	%mud
<u>230</u>	<u>dol mud w/ seam O</u>			<u>100</u>	
<u>90</u>	<u>WM</u>			<u>30</u>	<u>70</u>
<u>155</u>	<u>MW</u>			<u>80</u>	<u>20</u>
_____	_____			_____	_____
_____	_____			_____	_____

Rec Total 480 BHT 117 Gravity \_\_\_\_\_ API RW 417 @ 53 °F Chlorides 23,000 ppm

(A) Initial Hydrostatic <u>1725</u>	<input checked="" type="checkbox"/> Test 1150	T-On Location <u>1844</u>
(B) First Initial Flow <u>95</u>	<input type="checkbox"/> Jars _____	T-Started <u>2053</u>
(C) First Final Flow <u>158</u>	<input type="checkbox"/> Safety Joint _____	T-Open <u>2154</u>
(D) Initial Shut-In <u>970</u>	<input type="checkbox"/> Circ Sub _____	T-Pulled <u>2324</u>
(E) Second Initial Flow <u>211</u>	<input type="checkbox"/> Hourly Standby _____	T-Out <u>0104</u>
(F) Second Final Flow <u>249</u>	<input checked="" type="checkbox"/> Mileage 158.10	Comments _____
(G) Final Shut-In <u>964</u>	<input type="checkbox"/> Sampler _____	
(H) Final Hydrostatic <u>1622</u>	<input checked="" type="checkbox"/> Straddle 600	<input type="checkbox"/> Ruined Shale Packer _____
	<input type="checkbox"/> Shale Packer _____	<input type="checkbox"/> Ruined Packer _____
Initial Open <u>15</u>	<input type="checkbox"/> Extra Packer _____	<input type="checkbox"/> Extra Copies _____
Initial Shut-In <u>30</u>	<input type="checkbox"/> Extra Recorder _____	Sub Total <u>0</u>
Final Flow <u>15</u>	<input type="checkbox"/> Day Standby _____	Total <u>1908.10</u>
Final Shut-In <u>30</u>	<input type="checkbox"/> Accessibility _____	MP/DST Disc't _____
	Sub Total <u>1908.10</u>	

Approved By \_\_\_\_\_ Our Representative Brian Farball

Trilobite Testing Inc. shall not be liable for damaged of any kind of the property or personnel of the one for whom a test is made, or for any loss suffered or sustained, directly or indirectly, through the use of its equipment, or its statements or opinion concerning the results of any test, tools lost or damaged in the hole shall be paid for at cost by the party for whom the test is made.