



DRILL STEM TEST REPORT

Prepared For: **Barline Oil L.L.C**

7804 E Funston Ste 209 Wichita KS 67207

ATTN: Bill Ree

Ratliff/Wangerlin#1

17-2s-15w Smith

Start Date: 2013.01.08 @ 14:50:00

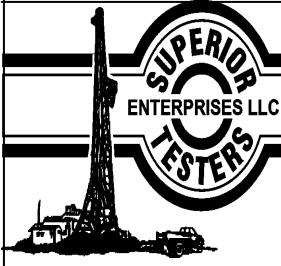
End Date: 2013.01.08 @ 00:00:00

Job Ticket #: 16997 DST #: 3

Superior Testers Enterprises LLC
PO Box 138 Great Bend KS 67530
1-800-792-6902

Printed: 2013.01.08 @ 21:20:12

Barline Oil L.L.C
17-2s-15w Smith
Ratliff/Wangerlin#1
DST # 3
Mississippi
2013.01.08



DRILL STEM TEST REPORT

Barline Oil L.L.C

17-2s-15w Smith

7804 E Funston Ste 209 Wichita KS 67207

Ratliff/Wangerlin#1

ATTN: Bill Ree

Job Ticket: 16997

DST#: 3

Test Start: 2013.01.08 @ 14:50:00

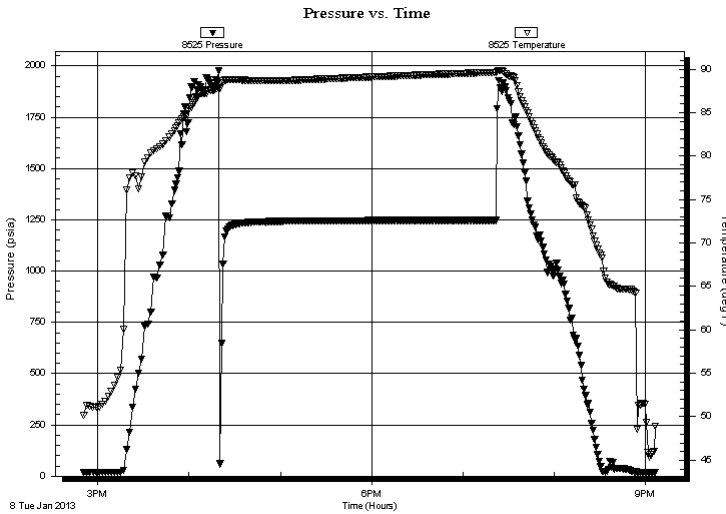
GENERAL INFORMATION:

Formation: **Mississippi**
 Deviated: No Whipstock: ft (KB)
 Test Type: Conventional Bottom Hole (Initial)
 Time Tool Opened: 16:19:00 Tester: Jared Scheck
 Time Test Ended: 00:00:00 Unit No: 3320-Great Bend -270
 Interval: **3702.00 ft (KB) To 3732.00 ft (KB) (TVD)** Reference Elevations: 1983.00 ft (KB)
 Total Depth: 3732.00 ft (KB) (TVD) 1970.00 ft (CF)
 Hole Diameter: 7.88 inches Hole Condition: Fair KB to GR/CF: 13.00 ft

Serial #: 8525

Press@RunDepth: psia @ ft (KB) Capacity: psia
 Start Date: 2013.01.08 End Date: 2013.01.08 Last Calib.: 1899.12.30
 Start Time: 14:50:00 End Time: 21:07:00 Time On Btm:
 Time Off Btm:

TEST COMMENT: 1st Opening 30 Minutes-Weak blow built 2 1/4 inches into bucket water in 30 minutes
 1st Shut-in 60 Minutes-No blow back
 2nd Opening 30 Minutes-Very weak surface blow did not build
 2nd Shut-in 60 Minutes-No blow back



PRESSURE SUMMARY

Time (Min.)	Pressure (psia)	Temp (deg F)	Annotation

Recovery

Length (ft)	Description	Volume (bbl)
10.00	mud	0.05

Gas Rates

Choke (inches)	Pressure (psia)	Gas Rate (Mcf/d)



DRILL STEM TEST REPORT

Barline Oil L.L.C

17-2s-15w Smith

7804 E Funston Ste 209 Wichita KS 67207

Ratliff/Wangerlin#1

Job Ticket: 16997

DST#: 3

ATTN: Bill Ree

Test Start: 2013.01.08 @ 14:50:00

GENERAL INFORMATION:

Formation: **Mississippi**

Deviated: No Whipstock: ft (KB)

Time Tool Opened: 16:19:00

Time Test Ended: 00:00:00

Test Type: Conventional Bottom Hole (Initial)

Tester: Jared Scheck

Unit No: 3320-Great Bend -270

Interval: 3702.00 ft (KB) To 3732.00 ft (KB) (TVD)

Reference Elevations: 1983.00 ft (KB)

Total Depth: 3732.00 ft (KB) (TVD)

1970.00 ft (CF)

Hole Diameter: 7.88 inches Hole Condition: Fair

KB to GR/CF: 13.00 ft

Serial #: 8159

Press@RunDepth: 1234.62 psia @ ft (KB)

Capacity: psia

Start Date: 2013.01.08

End Date: 2013.01.08

Last Calib.: 1899.12.30

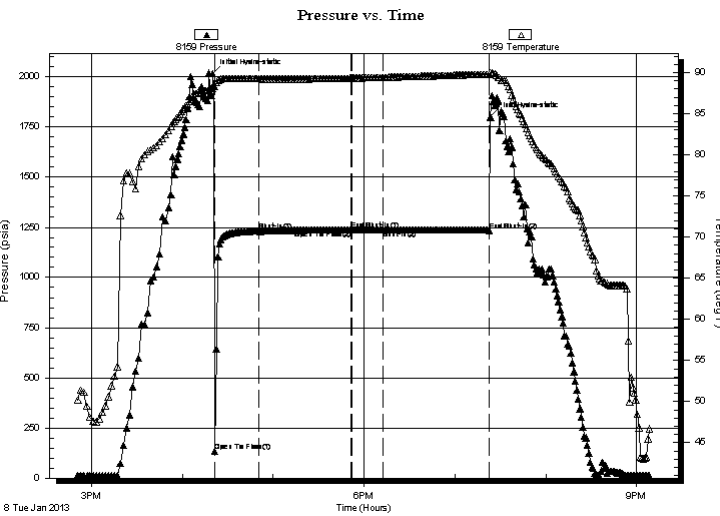
Start Time: 14:50:00

End Time: 21:08:30

Time On Btm: 2013.01.08 @ 16:20:00

Time Off Btm: 2013.01.08 @ 19:23:30

TEST COMMENT: 1st Opening 30 Minutes-Weak blow built 2 1/4 inches into bucket water in 30 minutes
 1st Shut-in 60 Minutes-No blow back
 2nd Opening 30 Minutes-Very weak surface blow did not build
 2nd Shut-in 60 Minutes-No blow back



PRESSURE SUMMARY

Time (Min.)	Pressure (psia)	Temp (deg F)	Annotation
0	2015.13	88.06	Initial Hydro-static
2	132.22	88.33	Open To Flow (1)
31	1232.32	89.23	Shut-In(1)
91	1236.67	89.31	End Shut-In(1)
92	1236.67	89.32	Open To Flow (2)
113	1236.87	89.42	Shut-In(2)
183	1234.62	89.80	End Shut-In(2)
184	1799.73	90.02	Final Hydro-static

Recovery

Length (ft)	Description	Volume (bbl)
10.00	mud	0.05

Gas Rates

Choke (inches)	Pressure (psia)	Gas Rate (Mcf/d)



DRILL STEM TEST REPORT

TOOL DIAGRAM

Barline Oil L.L.C

17-2s-15w Smith

7804 E Funston Ste 209 Wichita KS 67207

Ratliff/Wangerlin#1

Job Ticket: 16997

DST#: 3

ATTN: Bill Ree

Test Start: 2013.01.08 @ 14:50:00

Tool Information

Drill Pipe:	Length: 3572.00 ft	Diameter: 3.80 inches	Volume: 50.11 bbl	Tool Weight:	1000.00 lb
Heavy Wt. Pipe:	Length: 0.00 ft	Diameter: 0.00 inches	Volume: 0.00 bbl	Weight set on Packer:	20000.00 lb
Drill Collar:	Length: 120.00 ft	Diameter: 2.25 inches	Volume: 0.59 bbl	Weight to Pull Loose:	5000.00 lb
			<u>Total Volume: 50.70 bbl</u>	Tool Chased	0.00 ft
Drill Pipe Above KB:	10.00 ft			String Weight: Initial	40000.00 lb
Depth to Top Packer:	3702.00 ft			Final	40000.00 lb
Depth to Bottom Packer:	ft				
Interval between Packers:	30.00 ft				
Tool Length:	50.00 ft				
Number of Packers:	2	Diameter: 6.75 inches			
Tool Comments:					

Tool Description	Length (ft)	Serial No.	Position	Depth (ft)	Accum. Lengths
------------------	-------------	------------	----------	------------	----------------

Shut-In Tool	5.00			3687.00	
Hydraulic Tool	5.00			3692.00	
Packer	5.00			3697.00	20.00 Bottom Of Top Packer
Packer	5.00			3702.00	
Anchor	25.00			3727.00	
Recorder	1.00		Inside	3728.00	
Recorder	1.00		Outside	3729.00	
Bullnose	3.00			3732.00	30.00 Bottom Packers & Anchor

Total Tool Length: 50.00



DRILL STEM TEST REPORT

FLUID SUMMARY

Barline Oil L.L.C

17-2s-15w Smith

7804 E Funston Ste 209 Wichita KS 67207

Ratliff/Wangerlin#1

Job Ticket: 16997

DST#: 3

ATTN: Bill Ree

Test Start: 2013.01.08 @ 14:50:00

Mud and Cushion Information

Mud Type: Gel Chem

Mud Weight: 9.00 lb/gal

Viscosity: 70.00 sec/qt

Water Loss: 8.00 in³

Resistivity: ohm.m

Salinity: 500.00 ppm

Filter Cake: 1.00 inches

Cushion Type:

Cushion Length: ft

Cushion Volume: bbl

Gas Cushion Type:

Gas Cushion Pressure: psia

Oil API:

Water Salinity: deg API

ppm

Recovery Information

Recovery Table

Length ft	Description	Volume bbl
10.00	mud	0.049

Total Length: 10.00 ft Total Volume: 0.049 bbl

Num Fluid Samples: 0

Num Gas Bombs: 0

Serial #:

Laboratory Name:

Laboratory Location:

Recovery Comments:

Serial #: 8525

Barline Oil L.L.C

Ratliff/Wangerlin#1

DST Test Number: 3

