



DRILL STEM TEST REPORT

Prepared For: **F.G. Holl Company**

9431 Central Suit 100
Wichita Kansas 67206

ATTN: Frank Greenbaum

Menzoer 1-22

22-17-15w-Barton

Start Date: 2013.01.12 @ 11:00:00

End Date: 2013.01.12 @ 16:01:30

Job Ticket #: 17401 DST #: 1

Superior Testers Enterprises LLC
PO Box 138 Great Bend KS 67530
1-800-792-6902

Printed: 2013.01.13 @ 04:13:53



DRILL STEM TEST REPORT

F.G. Holl Company
 9431 Central Suit 100
 Wichita Kansas 67206
 ATTN: Frank Greenbaum

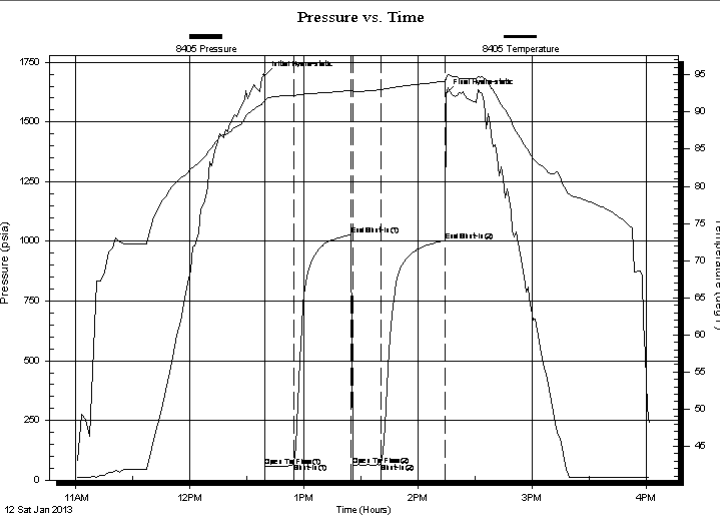
22-17-15w-Barton
Menzoer 1-22
 Job Ticket: 17401 **DST#: 1**
 Test Start: 2013.01.12 @ 11:00:00

GENERAL INFORMATION:

Formation: **Lansing A-B-C-D**
 Deviated: No Whipstock: ft (KB)
 Test Type: Conventional Bottom Hole (Initial)
 Time Tool Opened: 12:39:30 Tester: Dustin Ellis
 Time Test Ended: 16:01:30 Unit No: 3315-Great Bend-40
 Interval: **3294.00 ft (KB) To 3361.00 ft (KB) (TVD)** Reference Elevations: 1992.00 ft (KB)
 Total Depth: 3361.00 ft (KB) (TVD) 1984.00 ft (CF)
 Hole Diameter: 7.88 inches Hole Condition: Fair KB to GR/CF: 8.00 ft

Serial #: 8405 Inside
 Press@RunDepth: 71.78 psia @ 3357.57 ft (KB) Capacity: 5000.00 psia
 Start Date: 2013.01.12 End Date: 2013.01.12 Last Calib.: 2013.01.13
 Start Time: 11:00:00 End Time: 16:01:30 Time On Btm: 2013.01.12 @ 12:39:00
 Time Off Btm: 2013.01.12 @ 14:14:30

TEST COMMENT: 1st Open 15 minutes Weak blow blew 1/2 inch.
 1st Shut in 30 minutes No blow back.
 2nd Open 15 minutes Weak blow blew 1/2 inch.
 2nd Shut in 30 minutes No blow back



PRESSURE SUMMARY

Time (Min.)	Pressure (psia)	Temp (deg F)	Annotation
0	1695.81	91.58	Initial Hydro-static
1	56.42	91.53	Open To Flow (1)
16	68.70	92.22	Shut-In(1)
46	1027.64	92.88	End Shut-In(1)
47	61.33	92.74	Open To Flow (2)
62	71.78	93.01	Shut-In(2)
95	1003.48	94.13	End Shut-In(2)
96	1617.23	94.55	Final Hydro-static

Recovery

Length (ft)	Description	Volume (bbl)
13.00	Mud 100%	0.18

Gas Rates

Choke (inches)	Pressure (psia)	Gas Rate (Mcf/d)



DRILL STEM TEST REPORT

TOOL DIAGRAM

F.G. Holl Company

22-17-15w-Barton

9431 Central Suit 100
Wichita Kansas 67206

Menzoer 1-22

Job Ticket: 17401

DST#: 1

ATTN: Frank Greenbaum

Test Start: 2013.01.12 @ 11:00:00

Tool Information

Drill Pipe:	Length: 3279.00 ft	Diameter: 3.80 inches	Volume: 46.00 bbl	Tool Weight: 2000.00 lb
Heavy Wt. Pipe:	Length: 0.00 ft	Diameter: 0.00 inches	Volume: 0.00 bbl	Weight set on Packer: 20000.00 lb
Drill Collar:	Length: 0.00 ft	Diameter: 0.00 inches	Volume: 0.00 bbl	Weight to Pull Loose: 51000.00 lb
			<u>Total Volume: 46.00 bbl</u>	Tool Chased 1.00 ft
Drill Pipe Above KB:	13.00 ft			String Weight: Initial 50000.00 lb
Depth to Top Packer:	3294.00 ft			Final 50000.00 lb
Depth to Bottom Packer:	ft			
Interval between Packers:	67.57 ft			
Tool Length:	95.57 ft			
Number of Packers:	2	Diameter: 6.75 inches		

Tool Comments:

Tool Description	Length (ft)	Serial No.	Position	Depth (ft)	Accum. Lengths
Shut-In Tool	5.00			3271.00	
Hydraulic Tool	5.00			3276.00	
Safety Joint	2.00			3278.00	
Jars	6.00			3284.00	
Packer	5.00			3289.00	28.00 Bottom Of Top Packer
Packer	5.00			3294.00	
Anchor	5.00			3299.00	
Change Over Sub	0.75			3299.75	
Drill Pipe	31.07			3330.82	
Change Over Sub	0.75			3331.57	
Anchor	25.00			3356.57	
Recorder	1.00	8405	Inside	3357.57	
Recorder	1.00	8400	Inside	3358.57	
Bullnose	3.00			3361.57	67.57 Bottom Packers & Anchor

Total Tool Length: 95.57



DRILL STEM TEST REPORT

FLUID SUMMARY

F.G. Holl Company

22-17-15w-Barton

9431 Central Suit 100
Wichita Kansas 67206

Menzoer 1-22

Job Ticket: 17401

DST#: 1

ATTN: Frank Greenbaum

Test Start: 2013.01.12 @ 11:00:00

Mud and Cushion Information

Mud Type: Gel Chem

Mud Weight: 9.00 lb/gal

Viscosity: 46.00 sec/qt

Water Loss: 6.80 in³

Resistivity: ohm.m

Salinity: 6700.00 ppm

Filter Cake: 1.00 inches

Cushion Type:

Cushion Length: ft

Cushion Volume: bbl

Gas Cushion Type:

Gas Cushion Pressure: psia

Oil API:

Water Salinity: deg API

ppm

Recovery Information

Recovery Table

Length ft	Description	Volume bbl
13.00	Mud 100%	0.182

Total Length: 13.00 ft Total Volume: 0.182 bbl

Num Fluid Samples: 0

Num Gas Bombs: 0

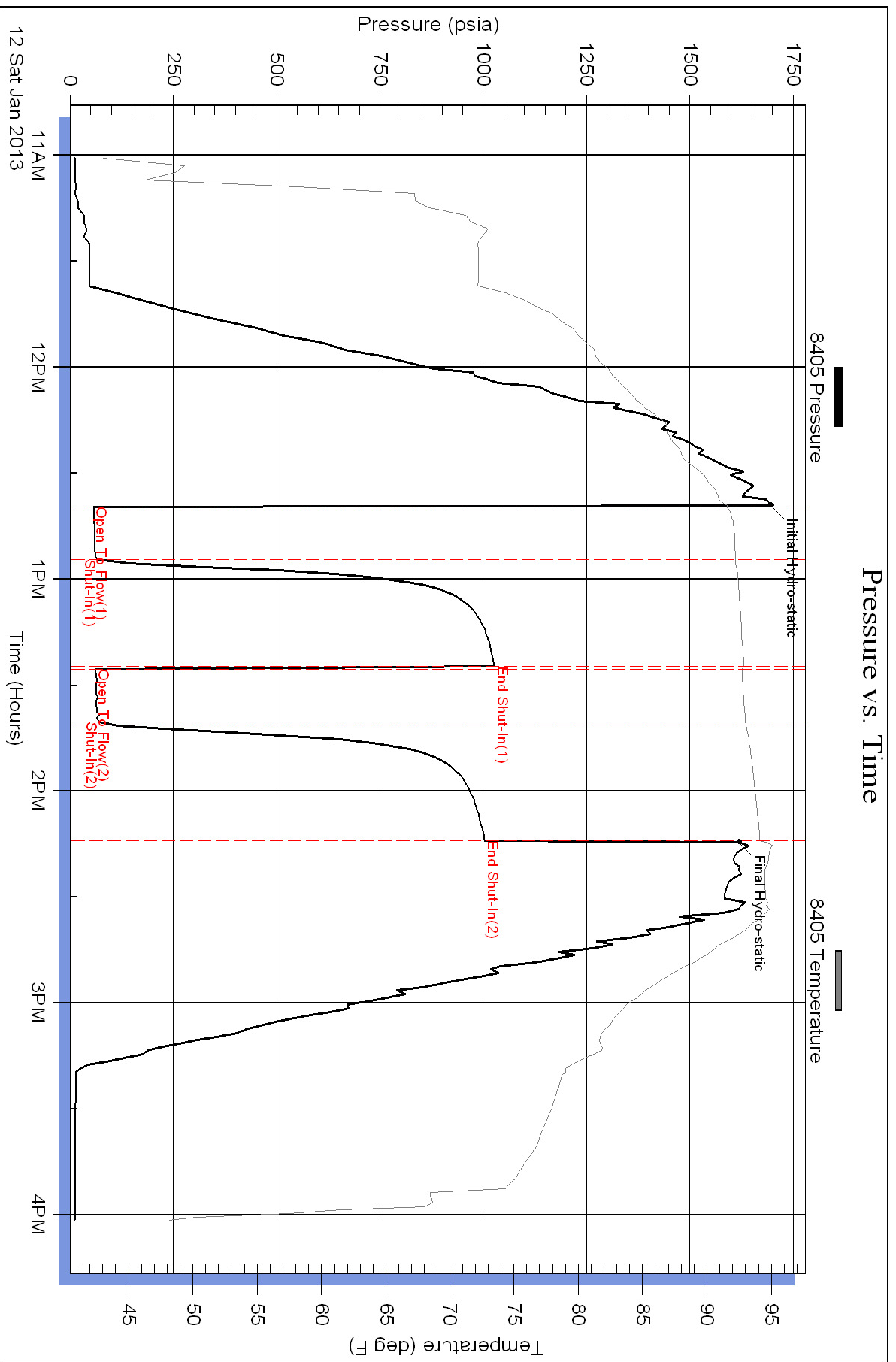
Serial #:

Laboratory Name:

Laboratory Location:

Recovery Comments:

Pressure vs. Time



Pressure vs. Time

