



## DRILL STEM TEST REPORT

Prepared For: **F.G. Holl Company**

9431 Central Suit 100  
Wichita Kansas 67206

ATTN: Frank Greenbaum

**Menzoer 1-22**

**22-17-15w-Barton**

Start Date: 2013.01.13 @ 11:10:00

End Date: 2013.01.13 @ 16:32:00

Job Ticket #: 17402                      DST #: 2

Superior Testers Enterprises LLC  
PO Box 138 Great Bend KS 67530  
1-800-792-6902

Printed: 2013.01.13 @ 16:40:52



# DRILL STEM TEST REPORT

F.G. Holl Company

**22-17-15w-Barton**

9431 Central Suit 100  
Wichita Kansas 67206

**Menzoer 1-22**

Job Ticket: 17402

**DST#: 2**

ATTN: Frank Greenbaum

Test Start: 2013.01.13 @ 11:10:00

## GENERAL INFORMATION:

Formation: **Lansing F**

Deviated: No Whipstock: ft (KB)

Time Tool Opened: 12:34:30

Time Test Ended: 16:32:00

Test Type: Conventional Bottom Hole (Initial)

Tester: Dustin Ellis

Unit No: 3315-Great Bend-40

**Interval: 3362.00 ft (KB) To 3371.00 ft (KB) (TVD)**

Reference Elevations: 1992.00 ft (KB)

Total Depth: 3371.00 ft (KB) (TVD)

1984.00 ft (CF)

Hole Diameter: 7.88 inches Hole Condition: Fair

KB to GR/CF: 8.00 ft

**Serial #: 8400 Outside**

Press@RunDepth: 31.84 psia @ 3368.00 ft (KB)

Capacity: 5000.00 psia

Start Date: 2013.01.13

End Date: 2013.01.13

Last Calib.: 2013.01.13

Start Time: 11:10:00

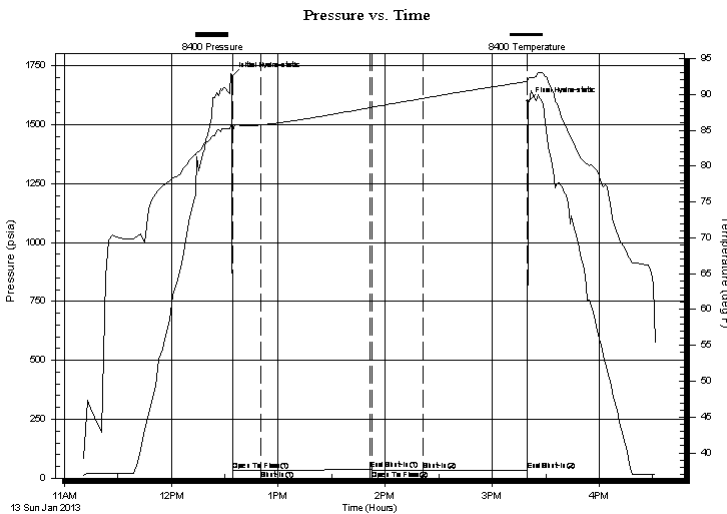
End Time: 16:32:00

Time On Btm: 2013.01.13 @ 12:34:00

Time Off Btm: 2013.01.13 @ 15:20:00

**TEST COMMENT:** 1st Open 15 minutes Weak blow 1/2 inch.  
1st Shut in 60 minutes No blow back.  
2nd Open 30 minutes Weak blow died off after 6 minutes.  
2nd Shut in 60 minutes No blow back

## PRESSURE SUMMARY



Time (Min.)	Pressure (psia)	Temp (deg F)	Annotation
0	1704.55	85.33	Initial Hydro-static
1	31.35	84.91	Open To Flow (1)
16	31.67	85.72	Shut-In(1)
78	36.77	88.13	End Shut-In(1)
79	30.86	88.17	Open To Flow (2)
107	31.84	89.42	Shut-In(2)
166	34.16	91.78	End Shut-In(2)
166	1599.27	92.22	Final Hydro-static

## Recovery

Length (ft)	Description	Volume (bbl)
2.00	Mud 100%	0.03

## Gas Rates

Choke (inches)	Pressure (psia)	Gas Rate (Mcf/d)



# DRILL STEM TEST REPORT

F.G. Holl Company

**22-17-15w-Barton**

9431 Central Suit 100  
Wichita Kansas 67206

**Menzoer 1-22**

Job Ticket: 17402

**DST#: 2**

ATTN: Frank Greenbaum

Test Start: 2013.01.13 @ 11:10:00

## GENERAL INFORMATION:

Formation: **Lansing F**

Deviated: No Whipstock: ft (KB)

Time Tool Opened: 12:34:30

Time Test Ended: 16:32:00

Test Type: Conventional Bottom Hole (Initial)

Tester: Dustin Ellis

Unit No: 3315-Great Bend-40

**Interval: 3362.00 ft (KB) To 3371.00 ft (KB) (TVD)**

Reference Elevations: 1992.00 ft (KB)

Total Depth: 3371.00 ft (KB) (TVD)

1984.00 ft (CF)

Hole Diameter: 7.88 inches Hole Condition: Fair

KB to GR/CF: 8.00 ft

**Serial #: 8405 Inside**

Press@RunDepth: 33.40 psia @ 3367.00 ft (KB)

Capacity: psia

Start Date: 2013.01.13

End Date: 2013.01.13

Last Calib.: 2013.01.13

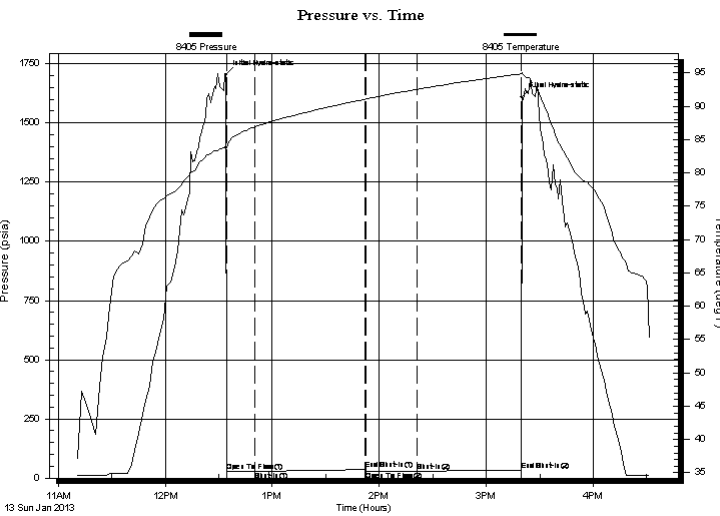
Start Time: 11:10:00

End Time: 16:32:00

Time On Btm: 2013.01.13 @ 12:34:00

Time Off Btm: 2013.01.13 @ 15:20:00

**TEST COMMENT:** 1st Open 15 minutes Weak blow 1/2 inch.  
1st Shut in 60 minutes No blow back.  
2nd Open 30 minutes Weak blow died off after 6 minutes.  
2nd Shut in 60 minutes No blow back



## PRESSURE SUMMARY

Time (Min.)	Pressure (psia)	Temp (deg F)	Annotation
0	1704.12	84.04	Initial Hydro-static
1	28.03	83.75	Open To Flow (1)
17	28.98	86.87	Shut-In(1)
78	35.99	91.05	End Shut-In(1)
79	28.61	91.08	Open To Flow (2)
107	29.68	92.53	Shut-In(2)
166	33.40	94.86	End Shut-In(2)
166	1610.56	95.08	Final Hydro-static

## Recovery

Length (ft)	Description	Volume (bbl)
2.00	Mud 100%	0.03

## Gas Rates

	Choke (inches)	Pressure (psia)	Gas Rate (Mcf/d)



# DRILL STEM TEST REPORT

**TOOL DIAGRAM**

F.G. Holl Company

**22-17-15w-Barton**

9431 Central Suit 100  
Wichita Kansas 67206

**Menzoer 1-22**

Job Ticket: 17402

**DST#: 2**

ATTN: Frank Greenbaum

Test Start: 2013.01.13 @ 11:10:00

## Tool Information

Drill Pipe:	Length: 3348.00 ft	Diameter: 3.80 inches	Volume: 46.96 bbl	Tool Weight: 2000.00 lb
Heavy Wt. Pipe:	Length: 0.00 ft	Diameter: 0.00 inches	Volume: 0.00 bbl	Weight set on Packer: 20000.00 lb
Drill Collar:	Length: 0.00 ft	Diameter: 0.00 inches	Volume: 0.00 bbl	Weight to Pull Loose: 52000.00 lb
			<u>Total Volume: 46.96 bbl</u>	Tool Chased 0.00 ft
Drill Pipe Above KB:	14.00 ft			String Weight: Initial 51000.00 lb
Depth to Top Packer:	3362.00 ft			Final 51000.00 lb
Depth to Bottom Packer:	ft			
Interval between Packers:	9.00 ft			
Tool Length:	37.00 ft			
Number of Packers:	2	Diameter: 6.75 inches		

Tool Comments:

Tool Description	Length (ft)	Serial No.	Position	Depth (ft)	Accum. Lengths
------------------	-------------	------------	----------	------------	----------------

Shut-In Tool	5.00			3339.00	
Hydraulic Tool	5.00			3344.00	
Safety Joint	2.00			3346.00	
Jars	6.00			3352.00	
Packer	5.00			3357.00	28.00 Bottom Of Top Packer
Packer	5.00			3362.00	
Anchor	4.00			3366.00	
Recorder	1.00	8405	Inside	3367.00	
Recorder	1.00	8400	Outside	3368.00	
Bullnose	3.00			3371.00	9.00 Bottom Packers & Anchor
<b>Total Tool Length:</b>	<b>37.00</b>				



# DRILL STEM TEST REPORT

## FLUID SUMMARY

F.G. Holl Company

**22-17-15w-Barton**

9431 Central Suit 100  
Wichita Kansas 67206

**Menzoer 1-22**

Job Ticket: 17402

**DST#: 2**

ATTN: Frank Greenbaum

Test Start: 2013.01.13 @ 11:10:00

### Mud and Cushion Information

Mud Type: Gel Chem

Cushion Type:

Oil API:

deg API

Mud Weight: 9.00 lb/gal

Cushion Length:

ft

Water Salinity:

ppm

Viscosity: 53.00 sec/qt

Cushion Volume:

bbl

Water Loss: 8.40 in<sup>3</sup>

Gas Cushion Type:

Resistivity: ohm.m

Gas Cushion Pressure:

psia

Salinity: 8200.00 ppm

Filter Cake: 1.00 inches

### Recovery Information

Recovery Table

Length ft	Description	Volume bbl
2.00	Mud 100%	0.028

Total Length: 2.00 ft      Total Volume: 0.028 bbl

Num Fluid Samples: 0

Num Gas Bombs: 0

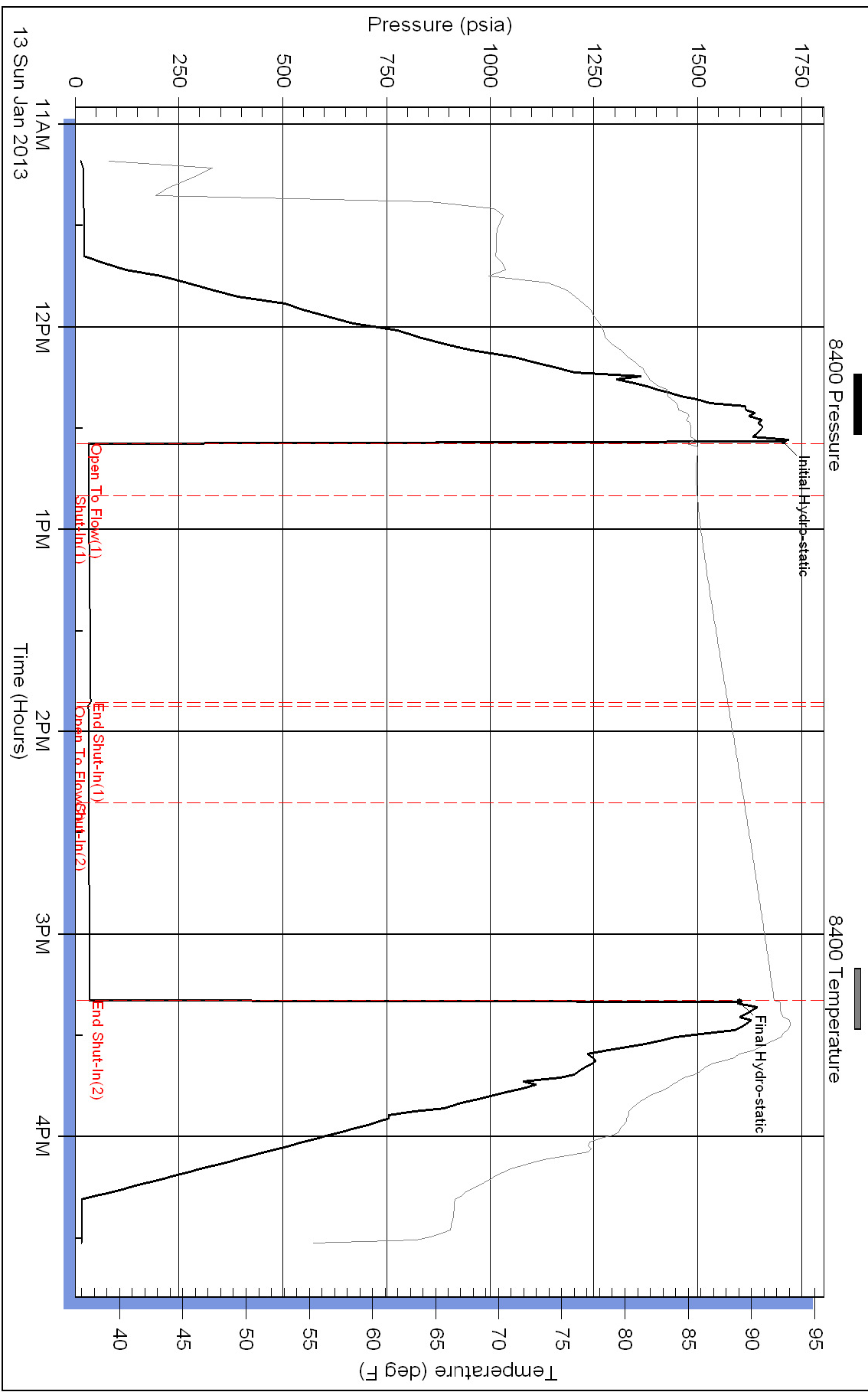
Serial #:

Laboratory Name:

Laboratory Location:

Recovery Comments:

### Pressure vs. Time



### Pressure vs. Time

