



## DRILL STEM TEST REPORT

Prepared For: **F.G. Holl Company**

9431 Central Suit 100  
Wichita Kansas 67206

ATTN: Frank Greenbaum

**Menzoer 1-22**

**22-17-15w-Barton**

Start Date: 2013.01.15 @ 03:30:00

End Date: 2013.01.15 @ 09:25:30

Job Ticket #: 17405                      DST #: 5

Superior Testers Enterprises LLC  
PO Box 138 Great Bend KS 67530  
1-800-792-6902

Printed: 2013.01.15 @ 09:37:41







# DRILL STEM TEST REPORT

**TOOL DIAGRAM**

F.G. Holl Company

**22-17-15w-Barton**

9431 Central Suit 100  
Wichita Kansas 67206

**Menzoer 1-22**

Job Ticket: 17405

**DST#: 5**

ATTN: Frank Greenbaum

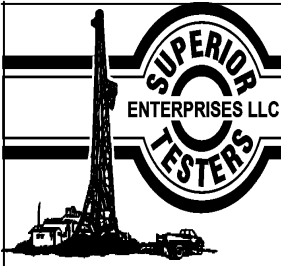
Test Start: 2013.01.15 @ 03:30:00

## Tool Information

Drill Pipe:	Length: 3436.00 ft	Diameter: 3.80 inches	Volume: 48.20 bbl	Tool Weight: 2000.00 lb
Heavy Wt. Pipe:	Length: 0.00 ft	Diameter: 0.00 inches	Volume: 0.00 bbl	Weight set on Packer: 20000.00 lb
Drill Collar:	Length: 0.00 ft	Diameter: 0.00 inches	Volume: 0.00 bbl	Weight to Pull Loose: 52000.00 lb
			<u>Total Volume: 48.20 bbl</u>	Tool Chased 0.00 ft
Drill Pipe Above KB:	20.00 ft			String Weight: Initial 52000.00 lb
Depth to Top Packer:	3444.00 ft			Final 52000.00 lb
Depth to Bottom Packer:	ft			
Interval between Packers:	16.00 ft			
Tool Length:	44.00 ft			
Number of Packers:	2	Diameter: 6.75 inches		

Tool Comments:

Tool Description	Length (ft)	Serial No.	Position	Depth (ft)	Accum. Lengths
Shut-In Tool	5.00			3421.00	
Hydraulic Tool	5.00			3426.00	
Safety Joint	2.00			3428.00	
Jars	6.00			3434.00	
Packer	5.00			3439.00	28.00 Bottom Of Top Packer
Packer	5.00			3444.00	
Anchor	11.00			3455.00	
Recorder	1.00	8405	Inside	3456.00	
Recorder	1.00	8400	Outside	3457.00	
Bullnose	3.00			3460.00	16.00 Bottom Packers & Anchor
<b>Total Tool Length:</b>	<b>44.00</b>				



# DRILL STEM TEST REPORT

## FLUID SUMMARY

F.G. Holl Company

**22-17-15w-Barton**

9431 Central Suit 100  
Wichita Kansas 67206

**Menzoer 1-22**

Job Ticket: 17405

**DST#: 5**

ATTN: Frank Greenbaum

Test Start: 2013.01.15 @ 03:30:00

### Mud and Cushion Information

Mud Type: Gel Chem  
Mud Weight: 9.00 lb/gal  
Viscosity: 68.00 sec/qt  
Water Loss: 9.20 in<sup>3</sup>  
Resistivity: ohm.m  
Salinity: 9700.00 ppm  
Filter Cake: 1.00 inches

Cushion Type:  
Cushion Length: ft  
Cushion Volume: bbl  
Gas Cushion Type:  
Gas Cushion Pressure: psia

Oil API: deg API  
Water Salinity: ppm

### Recovery Information

Recovery Table

Length ft	Description	Volume bbl
10.00	Mud cut oil 10% Oil 90% Mud	0.140
61.00	Gassy oil cut mud	0.856
0.00	Gas 20% Oil 75% Mud 5%	0.000
0.00	966 gas in pipe.	0.000

Total Length: 71.00 ft      Total Volume: 0.996 bbl

Num Fluid Samples: 0

Num Gas Bombs: 0

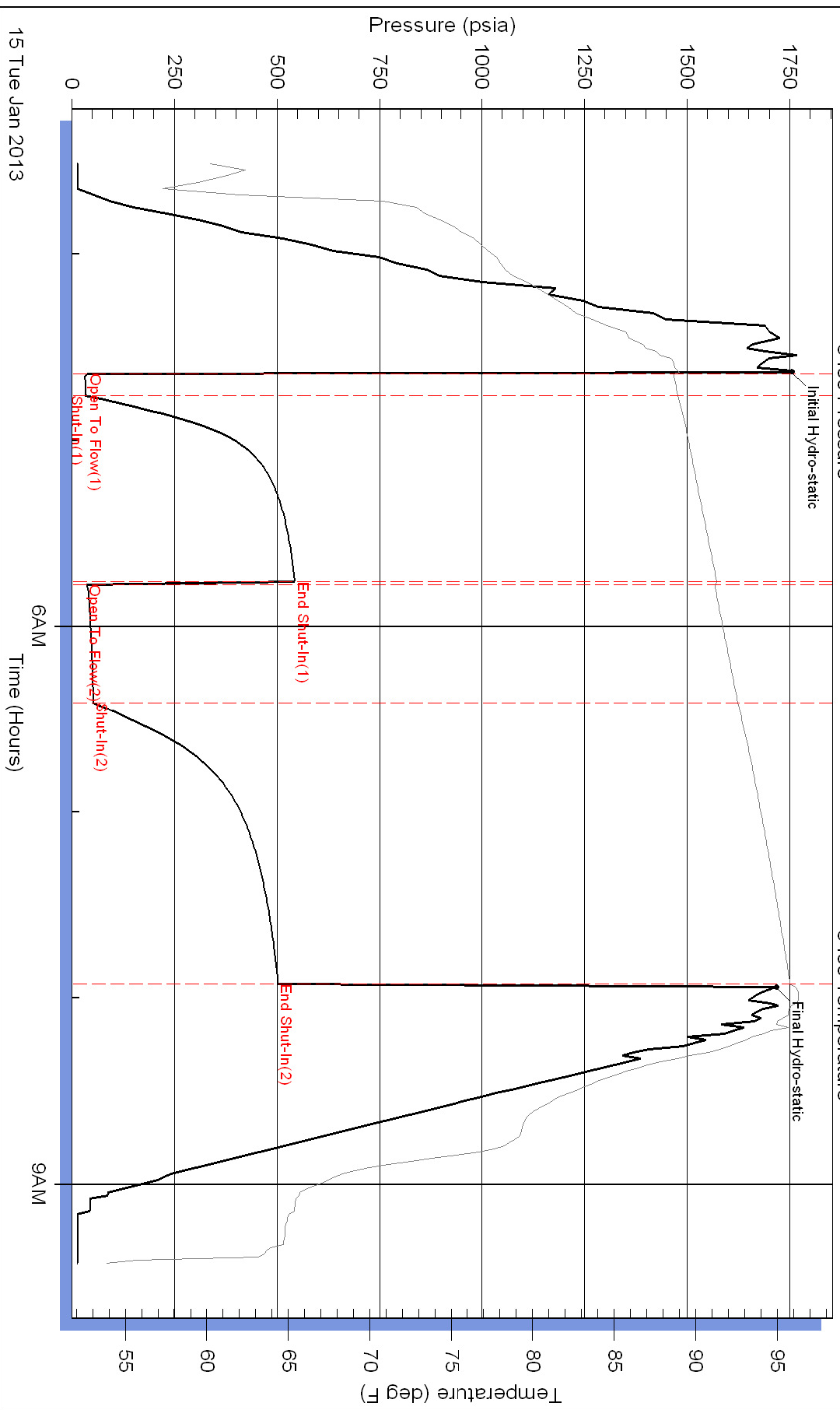
Serial #:

Laboratory Name:

Laboratory Location:

Recovery Comments:

### Pressure vs. Time



### Pressure vs. Time

