



## DRILL STEM TEST REPORT

Prepared For: **F.G. Holl Company**

9431 Central Suit 100  
Wichita Kansas 67206

ATTN: Frank Greenbaum

**Menzoer 1-22**

**22-17-15w-Barton**

Start Date: 2013.01.15 @ 04:20:00

End Date: 2013.01.15 @ 10:43:00

Job Ticket #: 17406                      DST #: 6

Superior Testers Enterprises LLC  
PO Box 138 Great Bend KS 67530  
1-800-792-6902

Printed: 2013.01.15 @ 22:53:05



# DRILL STEM TEST REPORT

F.G. Holl Company  
 9431 Central Suit 100  
 Wichita Kansas 67206  
 ATTN: Frank Greenbaum

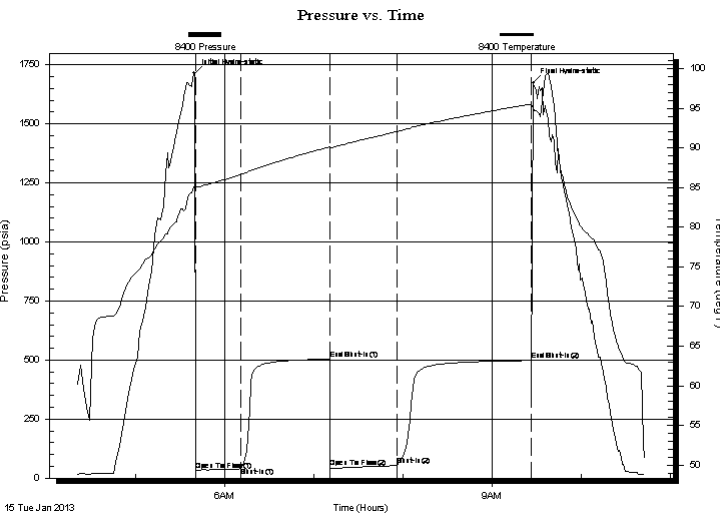
**22-17-15w-Barton**  
**Menzoer 1-22**  
 Job Ticket: 17406 **DST#: 6**  
 Test Start: 2013.01.15 @ 04:20:00

## GENERAL INFORMATION:

Formation: **Lansing J**  
 Deviated: No Whipstock: ft (KB)  
 Test Type: Conventional Bottom Hole (Initial)  
 Time Tool Opened: 05:40:30 Tester: Dustin Ellis  
 Time Test Ended: 10:43:00 Unit No: 3315- Great Bend -45  
**Interval: 3461.00 ft (KB) To 3475.00 ft (KB) (TVD)** Reference Elevations: 1992.00 ft (KB)  
 Total Depth: 3475.00 ft (KB) (TVD) 1984.00 ft (CF)  
 Hole Diameter: 7.88 inches Hole Condition: Fair KB to GR/CF: 8.00 ft

**Serial #: 8400 Outside**  
 Press@RunDepth: 52.73 psia @ 3472.00 ft (KB) Capacity: 5000.00 psia  
 Start Date: 2013.01.15 End Date: 2013.01.15 Last Calib.: 2013.01.15  
 Start Time: 04:20:00 End Time: 10:43:00 Time On Btm: 2013.01.15 @ 05:39:30  
 Time Off Btm: 2013.01.15 @ 09:27:30

**TEST COMMENT:** 1st Open 30 minutes Fair building blow built to 3 inches.  
 1st Shut in 60 minutes No blow back  
 2nd Open 45 minutes Fair building blow blew 3.5 inches  
 2nd Shut in 90 minutes No blow back



## PRESSURE SUMMARY

Time (Min.)	Pressure (psia)	Temp (deg F)	Annotation
0	1714.69	85.29	Initial Hydro-static
1	32.63	85.05	Open To Flow (1)
31	43.81	86.63	Shut-In(1)
91	503.86	90.13	End Shut-In(1)
92	43.96	89.94	Open To Flow (2)
136	52.73	92.03	Shut-In(2)
227	498.26	95.51	End Shut-In(2)
228	1672.85	95.13	Final Hydro-static

## Recovery

Length (ft)	Description	Volume (bbl)
5.00	Muddy water mud 50% water 50%	0.07

## Gas Rates

Choke (inches)	Pressure (psia)	Gas Rate (Mcf/d)



# DRILL STEM TEST REPORT

F.G. Holl Company

**22-17-15w-Barton**

9431 Central Suit 100  
Wichita Kansas 67206

**Menzoer 1-22**

Job Ticket: 17406

**DST#: 6**

ATTN: Frank Greenbaum

Test Start: 2013.01.15 @ 04:20:00

## GENERAL INFORMATION:

Formation: **Lansing J**

Deviated: No Whipstock: ft (KB)

Time Tool Opened: 05:40:30

Time Test Ended: 10:43:00

Test Type: Conventional Bottom Hole (Initial)

Tester: Dustin Ellis

Unit No: 3315- Great Bend -45

**Interval: 3461.00 ft (KB) To 3475.00 ft (KB) (TVD)**

Reference Elevations: 1992.00 ft (KB)

Total Depth: 3475.00 ft (KB) (TVD)

1984.00 ft (CF)

Hole Diameter: 7.88 inches Hole Condition: Fair

KB to GR/CF: 8.00 ft

**Serial #: 8405 Inside**

Press@RunDepth: 498.32 psia @ 3471.00 ft (KB)

Capacity: 5000.00 psia

Start Date: 2013.01.15 End Date: 2013.01.15

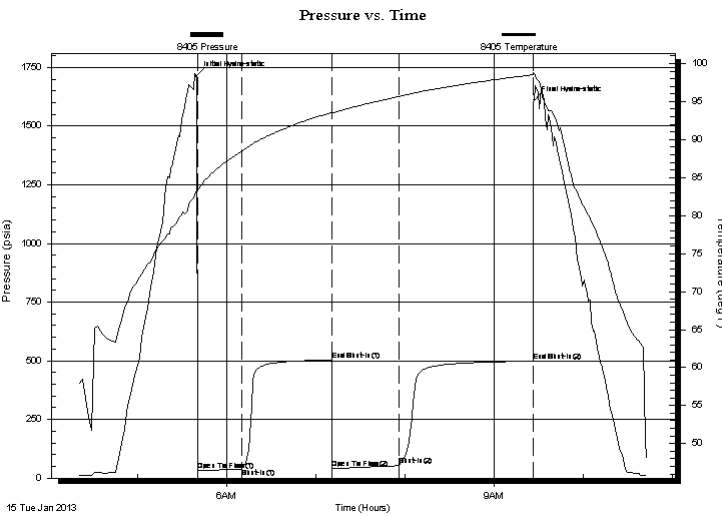
Last Calib.: 2013.01.15

Start Time: 04:20:00 End Time: 10:42:30

Time On Btm: 2013.01.15 @ 05:39:30

Time Off Btm: 2013.01.15 @ 09:27:00

**TEST COMMENT:** 1st Open 30 minutes Fair building blow built to 3 inches.  
1st Shut in 60 minutes No blow back  
2nd Open 45 minutes Fair building blow blew 3.5 inches  
2nd Shut in 90 minutes No blow back



## PRESSURE SUMMARY

Time (Min.)	Pressure (psia)	Temp (deg F)	Annotation
0	1714.48	83.31	Initial Hydro-static
1	31.51	83.34	Open To Flow (1)
31	41.11	88.50	Shut-In(1)
91	504.23	93.56	End Shut-In(1)
92	41.00	93.48	Open To Flow (2)
137	56.39	95.66	Shut-In(2)
227	498.32	98.53	End Shut-In(2)
228	1610.08	98.69	Final Hydro-static

## Recovery

Length (ft)	Description	Volume (bbl)
5.00	Muddy water mud 50% water 50%	0.07

## Gas Rates

	Choke (inches)	Pressure (psia)	Gas Rate (Mcf/d)



# DRILL STEM TEST REPORT

**TOOL DIAGRAM**

F.G. Holl Company

**22-17-15w-Barton**

9431 Central Suit 100  
Wichita Kansas 67206

**Menzoer 1-22**

Job Ticket: 17406

**DST#: 6**

ATTN: Frank Greenbaum

Test Start: 2013.01.15 @ 04:20:00

## Tool Information

Drill Pipe:	Length: 3440.00 ft	Diameter: 3.80 inches	Volume: 48.25 bbl	Tool Weight: 2000.00 lb
Heavy Wt. Pipe:	Length: 0.00 ft	Diameter: 0.00 inches	Volume: 0.00 bbl	Weight set on Packer: 20000.00 lb
Drill Collar:	Length: 0.00 ft	Diameter: 0.00 inches	Volume: 0.00 bbl	Weight to Pull Loose: 54000.00 lb
			<u>Total Volume: 48.25 bbl</u>	Tool Chased 0.00 ft
Drill Pipe Above KB:	7.00 ft			String Weight: Initial 55000.00 lb
Depth to Top Packer:	3461.00 ft			Final 56000.00 lb
Depth to Bottom Packer:	ft			
Interval between Packers:	14.00 ft			
Tool Length:	42.00 ft			
Number of Packers:	2	Diameter: 6.75 inches		
Tool Comments:				

## Tool Description

Tool Description	Length (ft)	Serial No.	Position	Depth (ft)	Accum. Lengths
Shut-In Tool	5.00			3438.00	
Hydraulic Tool	5.00			3443.00	
Safety Joint	2.00			3445.00	
Jars	6.00			3451.00	
Packer	5.00			3456.00	28.00 Bottom Of Top Packer
Packer	5.00			3461.00	
Anchor	9.00			3470.00	
Recorder	1.00	8405	Inside	3471.00	
Recorder	1.00	8400	Outside	3472.00	
Bullnose	3.00			3475.00	14.00 Bottom Packers & Anchor
<b>Total Tool Length:</b>	<b>42.00</b>				



# DRILL STEM TEST REPORT

## FLUID SUMMARY

F.G. Holl Company

**22-17-15w-Barton**

9431 Central Suit 100  
Wichita Kansas 67206

**Menzoer 1-22**

Job Ticket: 17406

**DST#: 6**

ATTN: Frank Greenbaum

Test Start: 2013.01.15 @ 04:20:00

### Mud and Cushion Information

Mud Type: Gel Chem

Cushion Type:

Oil API:

deg API

Mud Weight: 9.00 lb/gal

Cushion Length:

ft

Water Salinity:

ppm

Viscosity: 54.00 sec/qt

Cushion Volume:

bbl

Water Loss: 8.80 in<sup>3</sup>

Gas Cushion Type:

Resistivity: ohm.m

Gas Cushion Pressure:

psia

Salinity: 10500.00 ppm

Filter Cake: 1.00 inches

### Recovery Information

Recovery Table

Length ft	Description	Volume bbl
5.00	Muddy w ater mud 50% w ater 50%	0.070

Total Length: 5.00 ft      Total Volume: 0.070 bbl

Num Fluid Samples: 0

Num Gas Bombs: 0

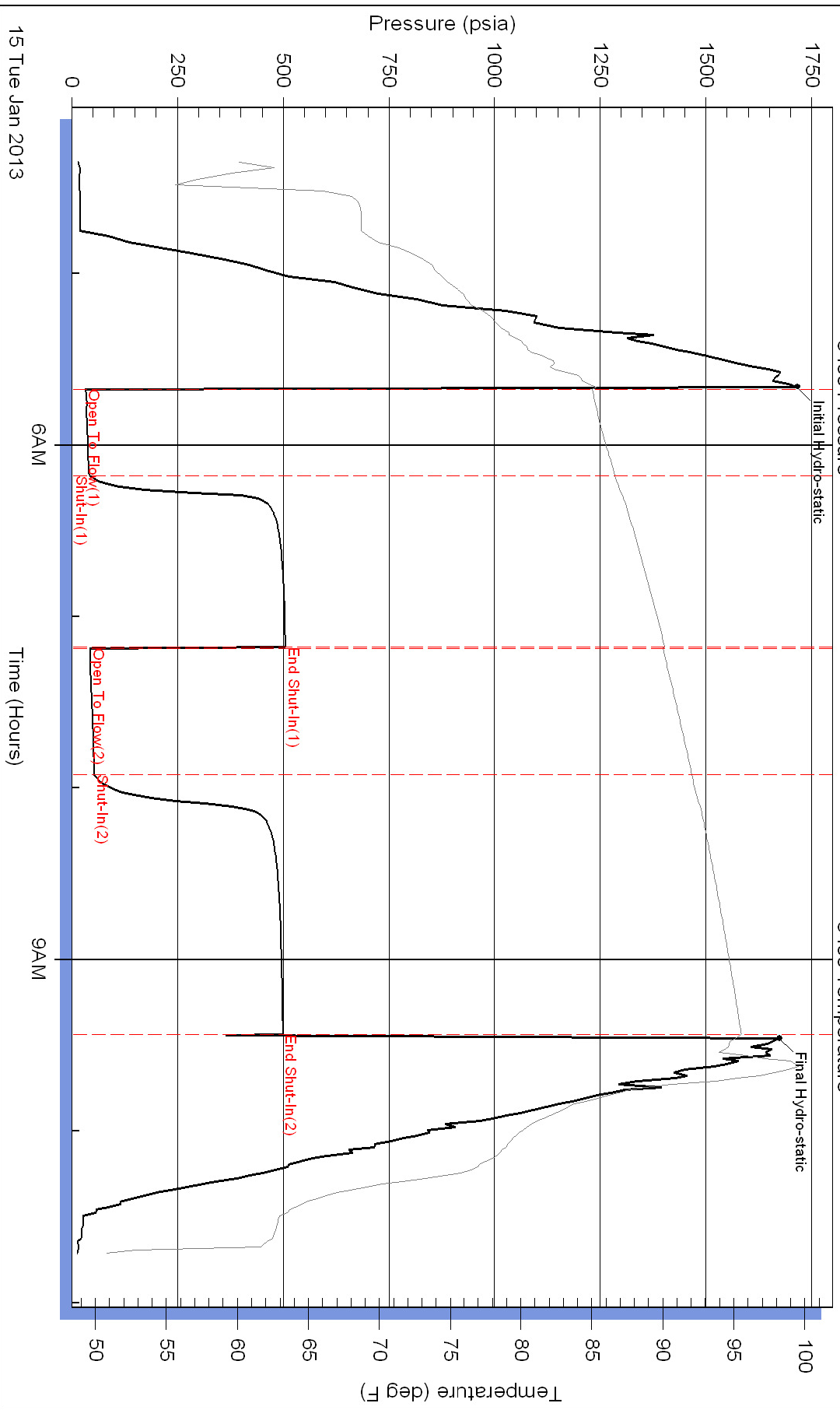
Serial #:

Laboratory Name:

Laboratory Location:

Recovery Comments:

### Pressure vs. Time



# Pressure vs. Time

