



DRILL STEM TEST REPORT

Prepared For: **Norstar Petroleum, Inc.**

88 Inverness CIR E. Unit F104
Englewood, CO 80112

ATTN: Bob Elder

36-9s-35w Thomas,KS

Barrett Survivors Trust #1-36

Start Date: 2013.03.03 @ 13:26:00

End Date: 2013.03.03 @ 19:51:30

Job Ticket #: 46889 DST #: 1

Trilobite Testing, Inc

PO Box 362 Hays, KS 67601

ph: 785-625-4778 fax: 785-625-5620

Printed: 2013.03.08 @ 14:57:05

Norstar Petroleum, Inc.

Barrett Survivors Trust #1-36

36-9s-35w Thomas,KS

DST # 1

"H-I-J"

2013.03.03



TRILOBITE TESTING, INC.

DRILL STEM TEST REPORT

Norstar Petroleum, Inc.
 88 Inverness CIR E. Unit F104
 Englewood, CO 80112
 ATTN: Bob Elder

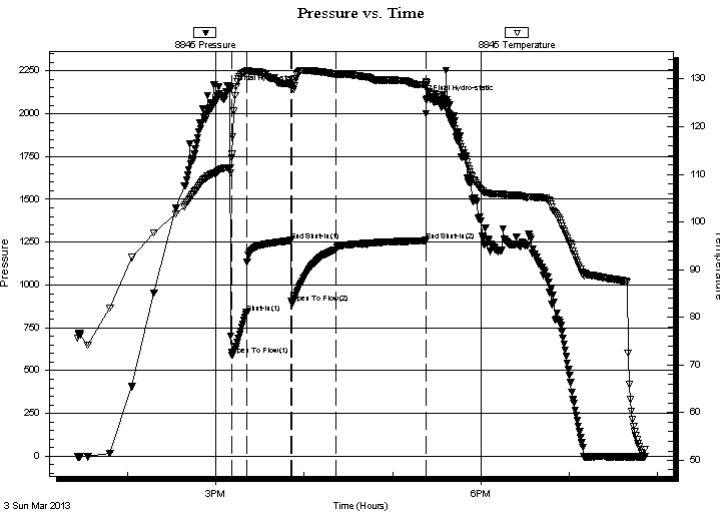
Barrett Survivors Trust #1-36
36-9s-35w Thomas,KS
 Job Ticket: 46889 **DST#: 1**
 Test Start: 2013.03.03 @ 13:26:00

GENERAL INFORMATION:

Formation: "H-I-J"
 Deviated: No Whipstock: ft (KB)
 Test Type: Conventional Bottom Hole (Initial)
 Time Tool Opened: 15:11:00 Tester: Sam Esparza
 Time Test Ended: 19:51:30 Unit No: 64
 Interval: 4320.00 ft (KB) To 4400.00 ft (KB) (TVD) Reference Elevations: 3289.00 ft (KB)
 Total Depth: 4400.00 ft (KB) (TVD) 3284.00 ft (CF)
 Hole Diameter: 7.88 inches Hole Condition: Good KB to GR/CF: 5.00 ft

Serial #: 8845 Outside
 Press @ Run Depth: 1206.75 psig @ 4321.00 ft (KB) Capacity: 8000.00 psig
 Start Date: 2013.03.03 End Date: 2013.03.03 Last Calib.: 2013.03.03
 Start Time: 13:26:05 End Time: 19:51:29 Time On Btm: 2013.03.03 @ 15:09:45
 Time Off Btm: 2013.03.03 @ 17:23:00

TEST COMMENT: IF: BOB @ 1 min.
 IS: No return.
 FF: BOB @ 1 min.
 FS: No return.



PRESSURE SUMMARY

Time (Min.)	Pressure (psig)	Temp (deg F)	Annotation
0	2139.28	111.37	Initial Hydro-static
2	590.65	114.35	Open To Flow (1)
11	839.11	131.59	Shut-In(1)
42	1260.10	128.85	End Shut-In(1)
42	894.70	128.31	Open To Flow (2)
72	1206.75	130.99	Shut-In(2)
133	1259.50	128.87	End Shut-In(2)
134	2081.52	129.14	Final Hydro-static

Recovery

Length (ft)	Description	Volume (bbl)
2690.00	MW 20m 80w	36.60

Gas Rates

Choke (inches)	Pressure (psig)	Gas Rate (Mcf/d)



**TRILOBITE
TESTING, INC.**

DRILL STEM TEST REPORT

TOOL DIAGRAM

Norstar Petroleum, Inc.

Barrett Survivors Trust #1-36

88 Inverness CIR E. Unit F104
Englewood, CO 80112

36-9s-35w Thomas,KS

Job Ticket: 46889

DST#: 1

ATTN: Bob Elder

Test Start: 2013.03.03 @ 13:26:00

Tool Information

Drill Pipe:	Length: 4193.00 ft	Diameter: 3.80 inches	Volume: 58.82 bbl	Tool Weight: 2000.00 lb
Heavy Wt. Pipe:	Length: 0.00 ft	Diameter: 0.00 inches	Volume: 0.00 bbl	Weight set on Packer: 30000.00 lb
Drill Collar:	Length: 124.00 ft	Diameter: 2.25 inches	Volume: 0.61 bbl	Weight to Pull Loose: 105000.0 lb
			<u>Total Volume: 59.43 bbl</u>	Tool Chased 0.00 ft
Drill Pipe Above KB:	25.00 ft			String Weight: Initial 57000.00 lb
Depth to Top Packer:	4320.00 ft			Final 67000.00 lb
Depth to Bottom Packer:	ft			
Interval between Packers:	80.00 ft			
Tool Length:	108.00 ft			
Number of Packers:	2	Diameter: 6.75 inches		

Tool Comments:

Tool Description	Length (ft)	Serial No.	Position	Depth (ft)	Accum. Lengths
------------------	-------------	------------	----------	------------	----------------

Change Over Sub	1.00			4293.00	
Shut In Tool	5.00			4298.00	
Hydraulic tool	5.00			4303.00	
Jars	5.00			4308.00	
Safety Joint	3.00			4311.00	
Packer	5.00			4316.00	28.00 Bottom Of Top Packer
Packer	4.00			4320.00	
Stubb	1.00			4321.00	
Recorder	0.00	8017	Outside	4321.00	
Recorder	0.00	8845	Outside	4321.00	
Perforations	9.00			4330.00	
Change Over Sub	1.00			4331.00	
Drill Pipe	63.00			4394.00	
Change Over Sub	1.00			4395.00	
Bullnose	5.00			4400.00	80.00 Bottom Packers & Anchor

Total Tool Length: 108.00



**TRILOBITE
TESTING, INC.**

DRILL STEM TEST REPORT

FLUID SUMMARY

Norstar Petroleum, Inc.

Barrett Survivors Trust #1-36

88 Inverness CIR E. Unit F104
Englewood, CO 80112

36-9s-35w Thomas,KS

Job Ticket: 46889

DST#: 1

ATTN: Bob Elder

Test Start: 2013.03.03 @ 13:26:00

Mud and Cushion Information

Mud Type: Gel Chem

Cushion Type:

Oil API:

deg API

Mud Weight: 9.00 lb/gal

Cushion Length:

ft

Water Salinity:

70000 ppm

Viscosity: 57.00 sec/qt

Cushion Volume:

bbbl

Water Loss: 6.38 in³

Gas Cushion Type:

Resistivity: 0.00 ohm.m

Gas Cushion Pressure:

psig

Salinity: 5100.00 ppm

Filter Cake: 2.00 inches

Recovery Information

Recovery Table

Length ft	Description	Volume bbl
2690.00	MW 20m 80w	36.604

Total Length: 2690.00 ft Total Volume: 36.604 bbl

Num Fluid Samples: 0

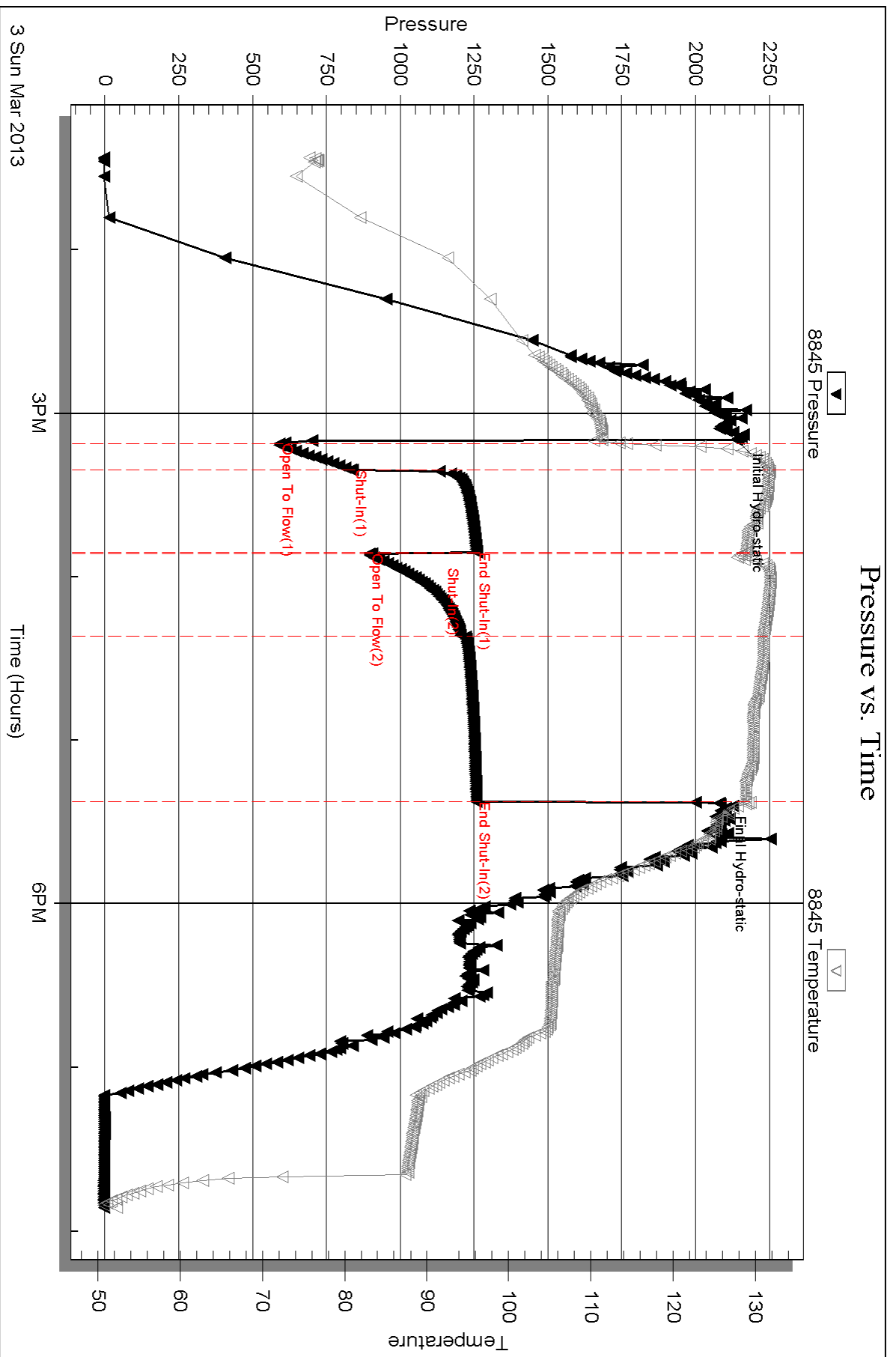
Num Gas Bombs: 0

Serial #:

Laboratory Name:

Laboratory Location:

Recovery Comments: RW: .135 @ 60 degrees= 70,000 ppm

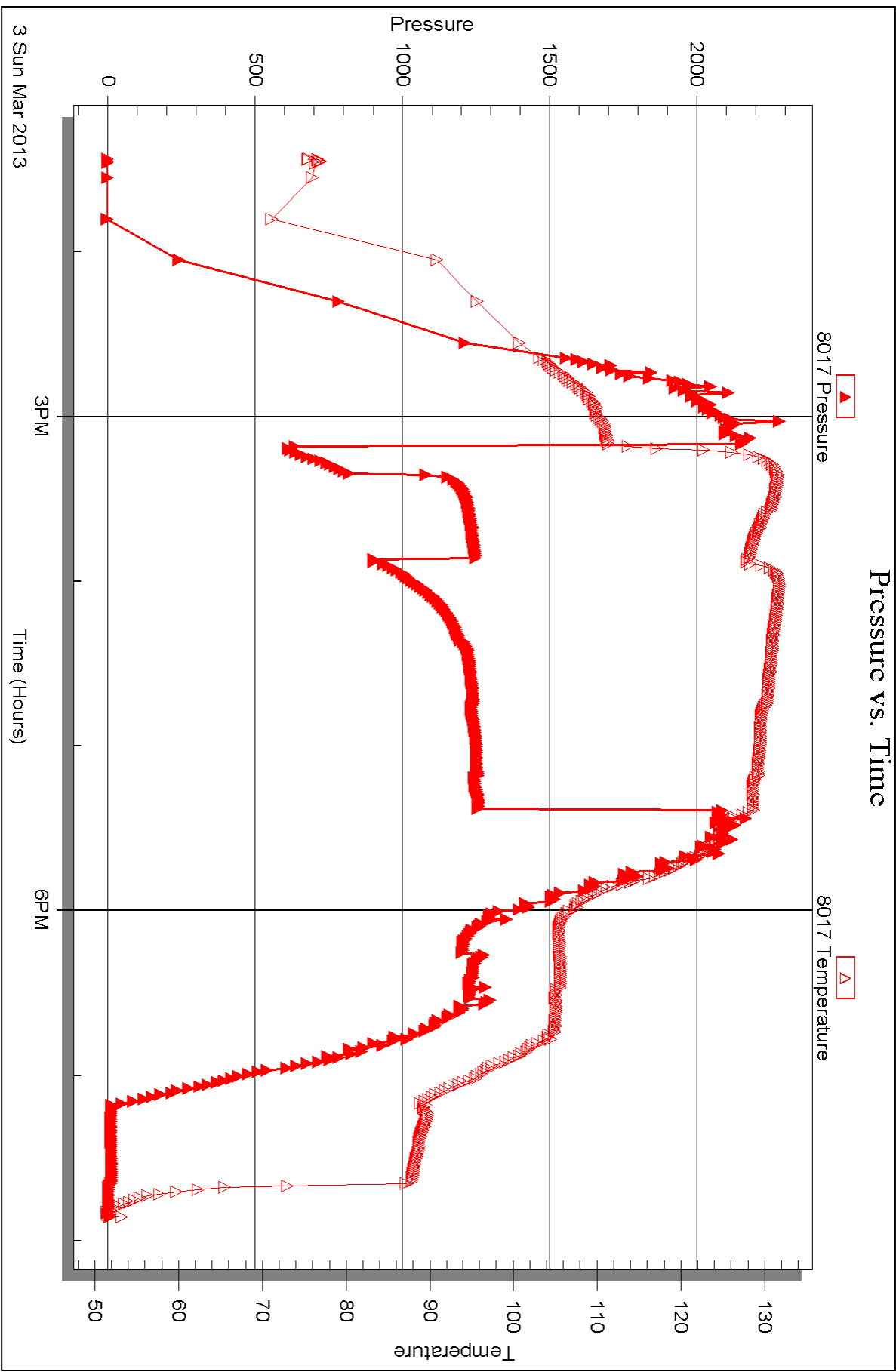


Serial #: 8017

Outside Norstar Petroleum, Inc.

36-95-35w Thomas, KS

DST Test Number: 1





DRILL STEM TEST REPORT

Prepared For: **Norstar Petroleum, Inc.**

88 Inverness CIR E. Unit F104
Englewood, CO 80112

ATTN: Bob Elder

36-9s-35w Thomas,KS

Barrett Survivors Trust #1-36

Start Date: 2013.03.04 @ 04:30:00

End Date: 2013.03.04 @ 10:12:00

Job Ticket #: 46890 DST #: 2

Trilobite Testing, Inc

PO Box 362 Hays, KS 67601

ph: 785-625-4778 fax: 785-625-5620

Printed: 2013.03.08 @ 14:56:29



TRILOBITE TESTING, INC.

DRILL STEM TEST REPORT

Norstar Petroleum, Inc.
 88 Inverness CIR E. Unit F104
 Englewood, CO 80112
 ATTN: Bob Elder

Barrett Survivors Trust #1-36
36-9s-35w Thomas,KS
 Job Ticket: 46890 **DST#: 2**
 Test Start: 2013.03.04 @ 04:30:00

GENERAL INFORMATION:

Formation: " K "
 Deviated: No Whipstock: ft (KB) Test Type: Conventional Bottom Hole (Reset)
 Time Tool Opened: 06:37:45 Tester: Sam Esparza
 Time Test Ended: 10:12:00 Unit No: 64
 Interval: **4403.00 ft (KB) To 4435.00 ft (KB) (TVD)** Reference Elevations: 3289.00 ft (KB)
 Total Depth: 4435.00 ft (KB) (TVD) 3284.00 ft (CF)
 Hole Diameter: 7.88 inches Hole Condition: Good KB to GR/CF: 5.00 ft

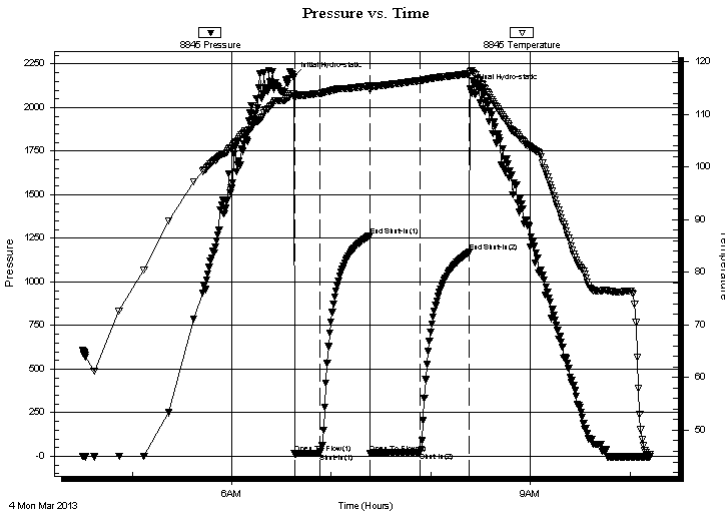
Serial #: 8845

Outside

Press @ Run Depth: 24.52 psig @ 4404.00 ft (KB) Capacity: 8000.00 psig
 Start Date: 2013.03.04 End Date: 2013.03.04 Last Calib.: 2013.03.04
 Start Time: 04:30:05 End Time: 10:11:59 Time On Btm: 2013.03.04 @ 06:37:30
 Time Off Btm: 2013.03.04 @ 08:23:45

TEST COMMENT: IF: Weak surface blow.
 IS: No return.
 FF: No blow.
 FS: No return.

PRESSURE SUMMARY



Time (Min.)	Pressure (psig)	Temp (deg F)	Annotation
0	2177.78	113.80	Initial Hydro-static
1	15.08	113.02	Open To Flow (1)
16	17.75	113.94	Shut-In(1)
46	1264.19	115.36	End Shut-In(1)
46	18.71	114.58	Open To Flow (2)
76	24.52	116.39	Shut-In(2)
106	1170.52	117.65	End Shut-In(2)
107	2109.75	118.12	Final Hydro-static

Recovery

Length (ft)	Description	Volume (bbl)
5.00	Mud 100m	0.02

* Recovery from multiple tests

Gas Rates

Choke (inches)	Pressure (psig)	Gas Rate (Mcf/d)



**TRILOBITE
TESTING, INC.**

DRILL STEM TEST REPORT

TOOL DIAGRAM

Norstar Petroleum, Inc.

Barrett Survivors Trust #1-36

88 Inverness CIR E. Unit F104
Englewood, CO 80112

36-9s-35w Thomas,KS

Job Ticket: 46890

DST#: 2

ATTN: Bob Elder

Test Start: 2013.03.04 @ 04:30:00

Tool Information

Drill Pipe:	Length: 4256.00 ft	Diameter: 3.80 inches	Volume: 59.70 bbl	Tool Weight: 2000.00 lb
Heavy Wt. Pipe:	Length: 0.00 ft	Diameter: 0.00 inches	Volume: 0.00 bbl	Weight set on Packer: 30000.00 lb
Drill Collar:	Length: 124.00 ft	Diameter: 2.25 inches	Volume: 0.61 bbl	Weight to Pull Loose: 75000.00 lb
			<u>Total Volume: 60.31 bbl</u>	Tool Chased 0.00 ft
Drill Pipe Above KB:	5.00 ft			String Weight: Initial 54000.00 lb
Depth to Top Packer:	4403.00 ft			Final 54000.00 lb
Depth to Bottom Packer:	ft			
Interval between Packers:	32.00 ft			
Tool Length:	60.00 ft			
Number of Packers:	2	Diameter: 6.75 inches		

Tool Comments:

Tool Description	Length (ft)	Serial No.	Position	Depth (ft)	Accum. Lengths
------------------	-------------	------------	----------	------------	----------------

Change Over Sub	1.00			4376.00	
Shut In Tool	5.00			4381.00	
Hydraulic tool	5.00			4386.00	
Jars	5.00			4391.00	
Safety Joint	3.00			4394.00	
Packer	5.00			4399.00	28.00 Bottom Of Top Packer
Packer	4.00			4403.00	
Stubb	1.00			4404.00	
Recorder	0.00	8017	Outside	4404.00	
Recorder	0.00	8845	Outside	4404.00	
Perforations	26.00			4430.00	
Bullnose	5.00			4435.00	32.00 Bottom Packers & Anchor

Total Tool Length: 60.00



**TRILOBITE
TESTING, INC.**

DRILL STEM TEST REPORT

FLUID SUMMARY

Norstar Petroleum, Inc.

Barrett Survivors Trust #1-36

88 Inverness CIR E. Unit F104
Englewood, CO 80112

36-9s-35w Thomas,KS

Job Ticket: 46890

DST#: 2

ATTN: Bob Elder

Test Start: 2013.03.04 @ 04:30:00

Mud and Cushion Information

Mud Type: Gel Chem

Cushion Type:

Oil API:

deg API

Mud Weight: 9.00 lb/gal

Cushion Length:

ft

Water Salinity:

ppm

Viscosity: 54.00 sec/qt

Cushion Volume:

bbbl

Water Loss: 6.39 in³

Gas Cushion Type:

Resistivity: 0.00 ohm.m

Gas Cushion Pressure:

psig

Salinity: 6200.00 ppm

Filter Cake: 2.00 inches

Recovery Information

Recovery Table

Length ft	Description	Volume bbl
5.00	Mud 100m	0.025

Total Length: 5.00 ft Total Volume: 0.025 bbl

Num Fluid Samples: 0

Num Gas Bombs: 0

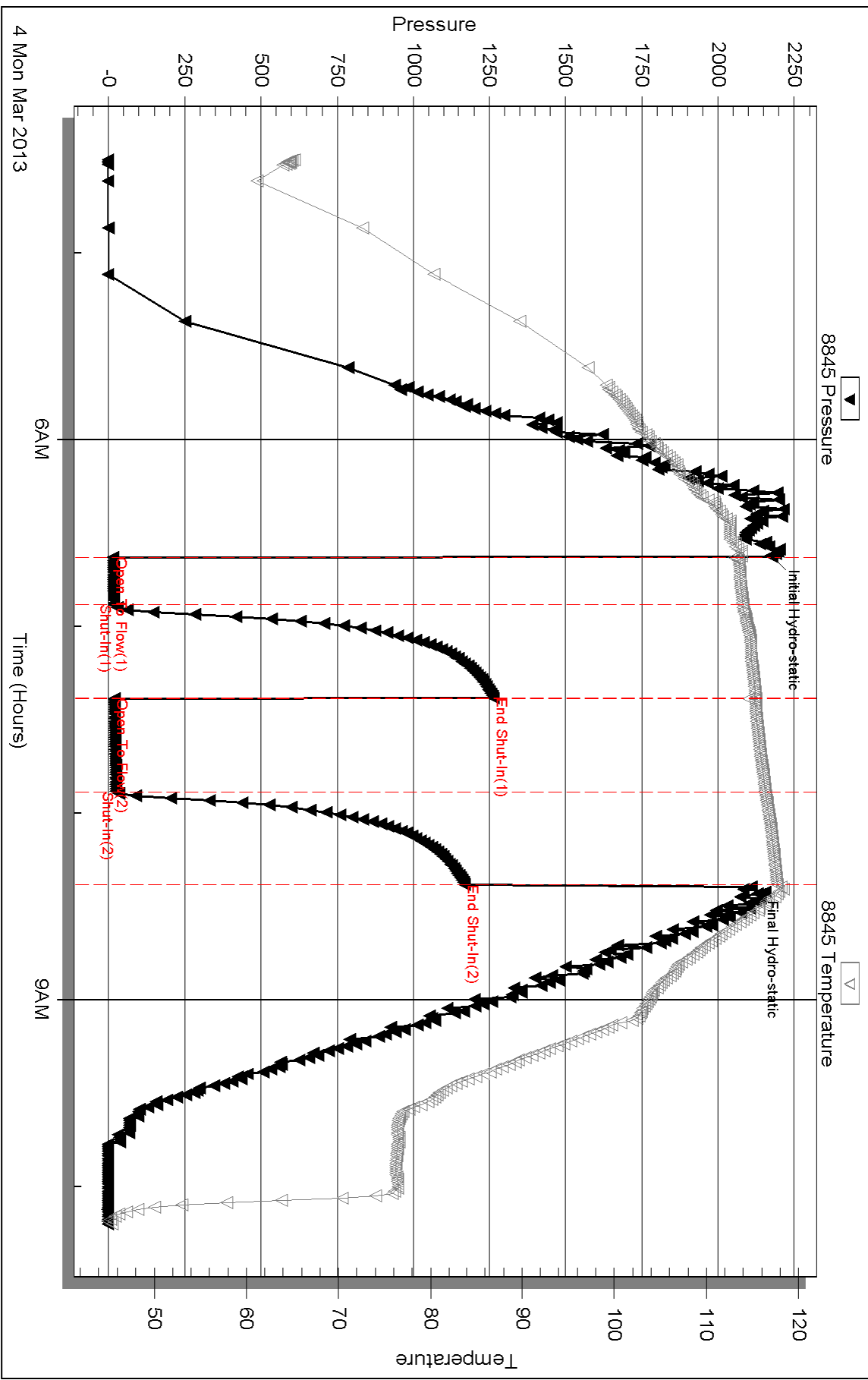
Serial #:

Laboratory Name:

Laboratory Location:

Recovery Comments:

Pressure vs. Time

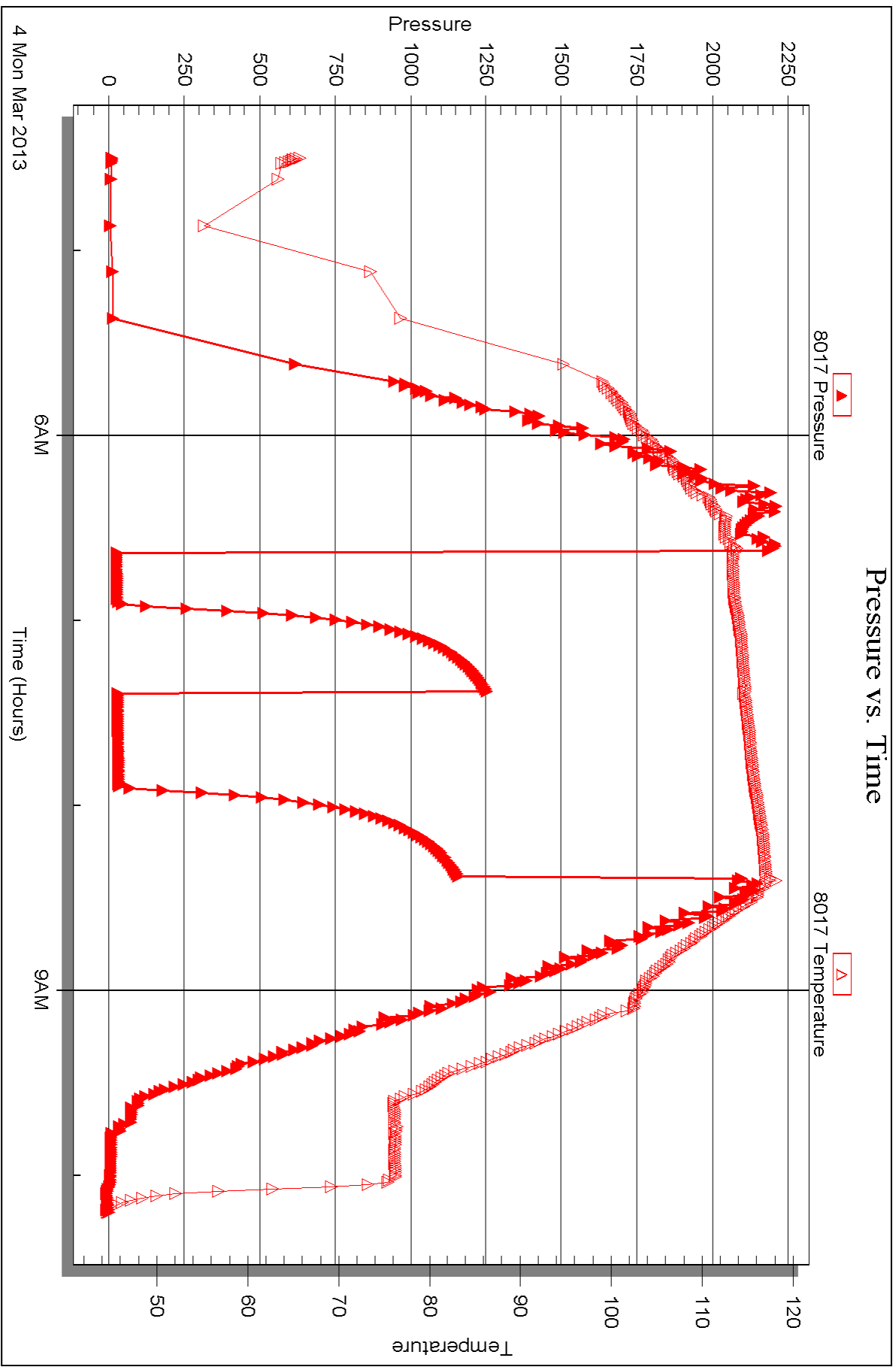


Serial #: 8017

Outside Norstar Petroleum, Inc.

36-95-35w Thomas, KS

DST Test Number: 2



Triobite Testing, Inc

Ref. No: 46890

Printed: 2013.03.08 @ 14:56:32



DRILL STEM TEST REPORT

Prepared For: **Norstar Petroleum, Inc.**

88 Inverness CIR E. Unit F104
Englewood, CO 80112

ATTN: Bob Elder

36-9s-35w Thomas,KS

Barrett Survivors Trust #1-36

Start Date: 2013.03.05 @ 13:06:00

End Date: 2013.03.05 @ 18:38:00

Job Ticket #: 46891 DST #: 3

Trilobite Testing, Inc

PO Box 362 Hays, KS 67601

ph: 785-625-4778 fax: 785-625-5620

Printed: 2013.03.08 @ 14:55:47

Norstar Petroleum, Inc.

Barrett Survivors Trust #1-36

36-9s-35w Thomas,KS

DST # 3

Ft. Scott

2013.03.05



TRILOBITE TESTING, INC.

DRILL STEM TEST REPORT

Norstar Petroleum, Inc.
 88 Inverness CIR E. Unit F104
 Englewood, CO 80112
 ATTN: Bob Elder

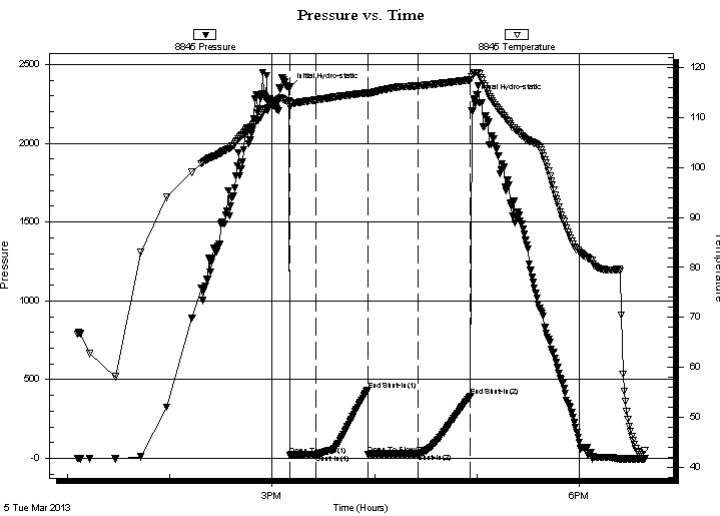
Barrett Survivors Trust #1-36
36-9s-35w Thomas,KS
 Job Ticket: 46891 **DST#: 3**
 Test Start: 2013.03.05 @ 13:06:00

GENERAL INFORMATION:

Formation: **Ft. Scott**
 Deviated: No Whipstock: ft (KB)
 Time Tool Opened: 15:10:15
 Time Test Ended: 18:38:00
 Interval: **4624.00 ft (KB) To 4674.00 ft (KB) (TVD)**
 Total Depth: 4674.00 ft (KB) (TVD)
 Hole Diameter: 7.88 inches Hole Condition: Good
 Test Type: Conventional Bottom Hole (Reset)
 Tester: Sam Esparza
 Unit No: 64
 Reference Elevations: 3289.00 ft (KB)
 3284.00 ft (CF)
 KB to GR/CF: 5.00 ft

Serial #: 8845 Outside
 Press @ Run Depth: 29.76 psig @ 4625.00 ft (KB) Capacity: 8000.00 psig
 Start Date: 2013.03.05 End Date: 2013.03.05 Last Calib.: 2013.03.05
 Start Time: 13:06:05 End Time: 18:37:59 Time On Btm: 2013.03.05 @ 15:10:00
 Time Off Btm: 2013.03.05 @ 16:58:00

TEST COMMENT: IF: 1/2" blow.
 IS: No return.
 FF: No blow.
 FS: No return.



PRESSURE SUMMARY

Time (Min.)	Pressure (psig)	Temp (deg F)	Annotation
0	2356.46	113.21	Initial Hydro-static
1	21.87	112.02	Open To Flow (1)
16	25.54	113.48	Shut-In(1)
46	433.60	114.89	End Shut-In(1)
46	27.44	114.75	Open To Flow (2)
76	29.76	116.31	Shut-In(2)
106	396.47	117.50	End Shut-In(2)
108	2284.05	118.86	Final Hydro-static

Recovery

Length (ft)	Description	Volume (bbl)
10.00	Mud 100m	0.05

* Recovery from multiple tests

Gas Rates

Choke (inches)	Pressure (psig)	Gas Rate (Mcf/d)



**TRILOBITE
TESTING, INC.**

DRILL STEM TEST REPORT

Norstar Petroleum, Inc.

88 Inverness CIR E. Unit F104
Englewood, CO 80112

ATTN: Bob Elder

Barrett Survivors Trust #1-36

36-9s-35w Thomas,KS

Job Ticket: 46891 **DST#: 3**

Test Start: 2013.03.05 @ 13:06:00

GENERAL INFORMATION:

Formation: **Ft. Scott**

Deviated: No Whipstock: ft (KB)

Time Tool Opened: 15:10:15

Time Test Ended: 18:38:00

Test Type: Conventional Bottom Hole (Reset)

Tester: Sam Esparza

Unit No: 64

Interval: 4624.00 ft (KB) To 4674.00 ft (KB) (TVD)

Total Depth: 4674.00 ft (KB) (TVD)

Hole Diameter: 7.88 inches Hole Condition: Good

Reference Elevations: 3289.00 ft (KB)

3284.00 ft (CF)

KB to GR/CF: 5.00 ft

Serial #: 8017 Outside

Press @ Run Depth: psig @ 4625.00 ft (KB)

Start Date: 2013.03.05

End Date: 2013.03.05

Capacity: 8000.00 psig

Last Calib.: 2013.03.05

Start Time: 13:06:05

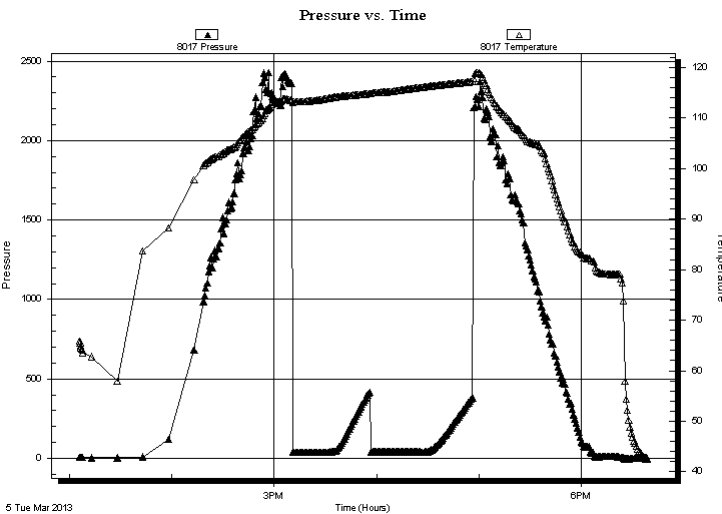
End Time: 18:37:59

Time On Btm:

Time Off Btm:

TEST COMMENT: IF: 1/2" blow.
IS: No return.
FF: No blow.
FS: No return.

PRESSURE SUMMARY



Time (Min.)	Pressure (psig)	Temp (deg F)	Annotation

Recovery

Length (ft)	Description	Volume (bbl)
10.00	Mud 100m	0.05

Gas Rates

Choke (inches)	Pressure (psig)	Gas Rate (Mcf/d)

* Recovery from multiple tests



**TRILOBITE
TESTING, INC.**

DRILL STEM TEST REPORT

TOOL DIAGRAM

Norstar Petroleum, Inc.

Barrett Survivors Trust #1-36

88 Inverness CIR E. Unit F104
Englewood, CO 80112

36-9s-35w Thomas,KS

Job Ticket: 46891

DST#: 3

ATTN: Bob Elder

Test Start: 2013.03.05 @ 13:06:00

Tool Information

Drill Pipe:	Length: 4477.00 ft	Diameter: 3.80 inches	Volume: 62.80 bbl	Tool Weight:	2000.00 lb
Heavy Wt. Pipe:	Length: 0.00 ft	Diameter: 0.00 inches	Volume: 0.00 bbl	Weight set on Packer:	30000.00 lb
Drill Collar:	Length: 124.00 ft	Diameter: 2.25 inches	Volume: 0.61 bbl	Weight to Pull Loose:	85000.00 lb
			<u>Total Volume: 63.41 bbl</u>	Tool Chased	0.00 ft
Drill Pipe Above KB:	5.00 ft			String Weight: Initial	58000.00 lb
Depth to Top Packer:	4624.00 ft			Final	58000.00 lb
Depth to Bottom Packer:	ft				
Interval between Packers:	50.00 ft				
Tool Length:	78.00 ft				
Number of Packers:	2	Diameter: 6.75 inches			

Tool Comments:

Tool Description

Tool Description	Length (ft)	Serial No.	Position	Depth (ft)	Accum. Lengths
Change Over Sub	1.00			4597.00	
Shut In Tool	5.00			4602.00	
Hydraulic tool	5.00			4607.00	
Jars	5.00			4612.00	
Safety Joint	3.00			4615.00	
Packer	5.00			4620.00	28.00 Bottom Of Top Packer
Packer	4.00			4624.00	
Stubb	1.00			4625.00	
Recorder	0.00	8017	Outside	4625.00	
Recorder	0.00	8845	Outside	4625.00	
Perforations	10.00			4635.00	
Change Over Sub	1.00			4636.00	
Drill Pipe	32.00			4668.00	
Change Over Sub	1.00			4669.00	
Bullnose	5.00			4674.00	50.00 Bottom Packers & Anchor

Total Tool Length: 78.00



**TRILOBITE
TESTING, INC.**

DRILL STEM TEST REPORT

FLUID SUMMARY

Norstar Petroleum, Inc.

Barrett Survivors Trust #1-36

88 Inverness CIR E. Unit F104
Englewood, CO 80112

36-9s-35w Thomas,KS

Job Ticket: 46891

DST#: 3

ATTN: Bob Elder

Test Start: 2013.03.05 @ 13:06:00

Mud and Cushion Information

Mud Type: Gel Chem

Cushion Type:

Oil API:

deg API

Mud Weight: 9.00 lb/gal

Cushion Length:

ft

Water Salinity:

ppm

Viscosity: 56.00 sec/qt

Cushion Volume:

bbbl

Water Loss: 6.79 in³

Gas Cushion Type:

Resistivity: 0.00 ohm.m

Gas Cushion Pressure:

psig

Salinity: 6900.00 ppm

Filter Cake: 2.00 inches

Recovery Information

Recovery Table

Length ft	Description	Volume bbl
10.00	Mud 100m	0.049

Total Length: 10.00 ft Total Volume: 0.049 bbl

Num Fluid Samples: 0

Num Gas Bombs: 0

Serial #:

Laboratory Name:

Laboratory Location:

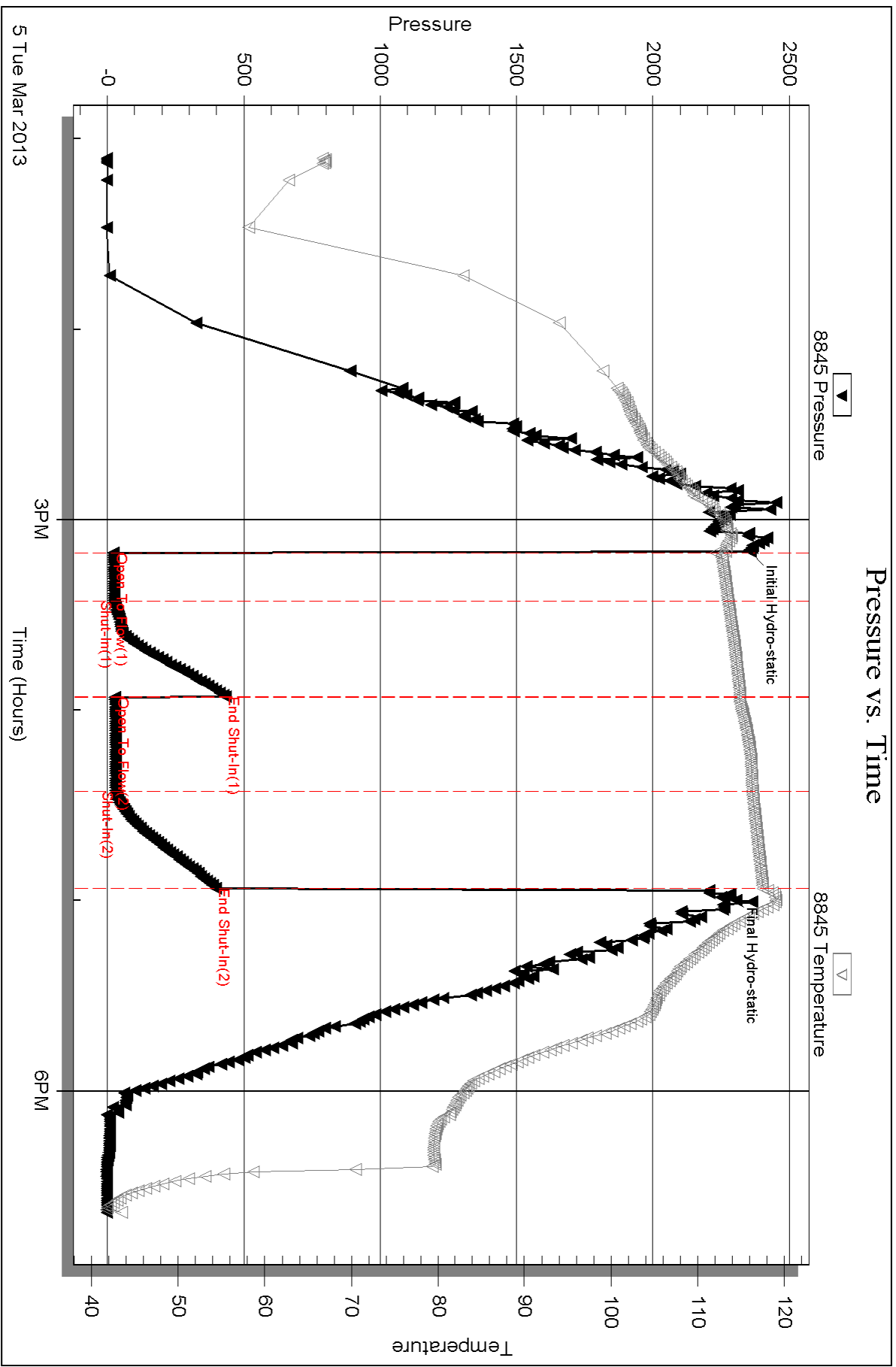
Recovery Comments:

Serial #: 8845

Outside Norstar Petroleum, Inc.

36-95-35w Thomas, KS

DST Test Number: 3



Triobite Testing, Inc

Ref. No: 46891

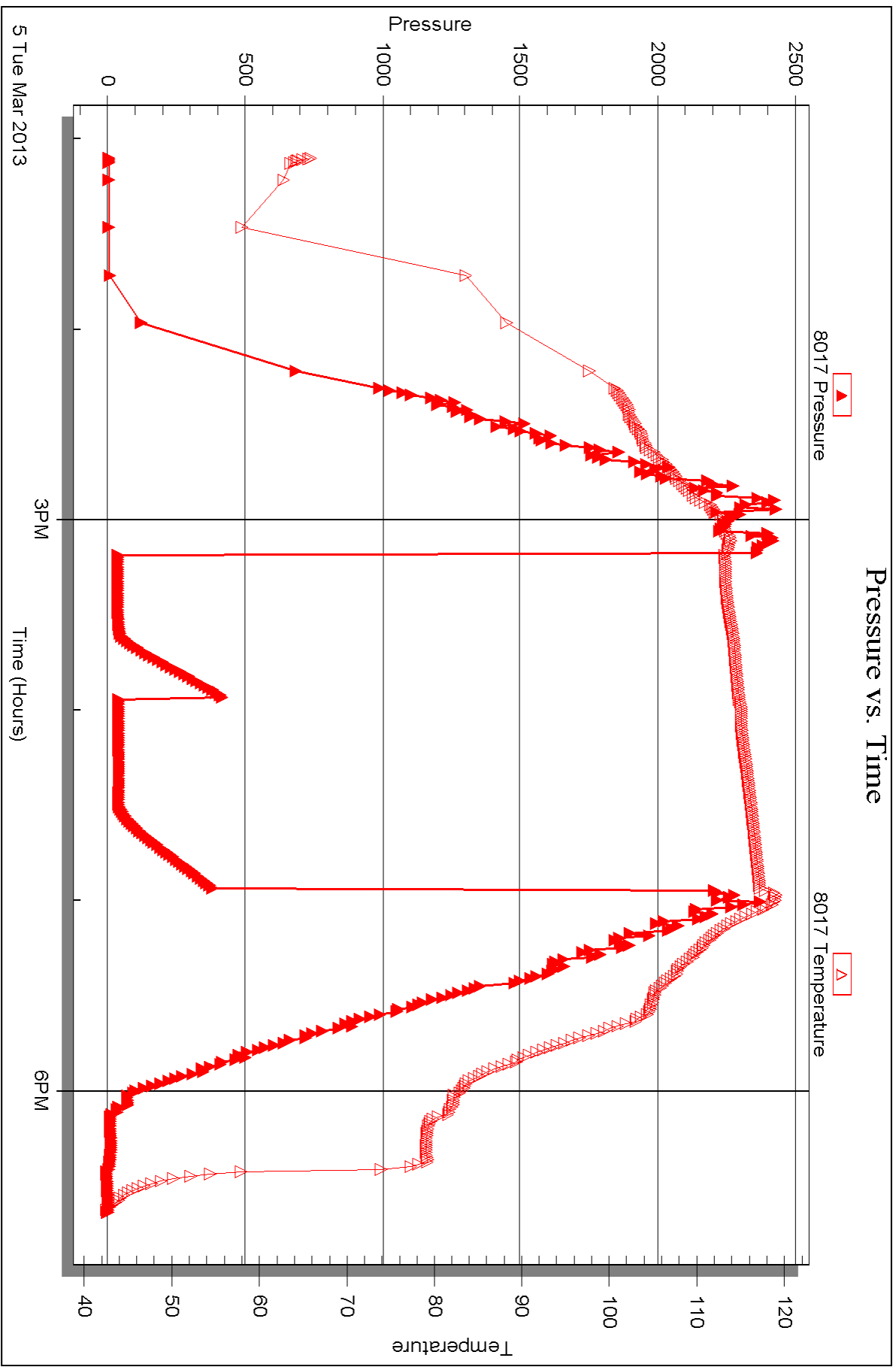
Printed: 2013.03.08 @ 14:55:49

Serial #: 8017

Outside Norstar Petroleum, Inc.

36-95-35w Thomas, KS

DST Test Number: 3



5 Tue Mar 2013

3PM

Time (Hours)

6PM



DRILL STEM TEST REPORT

Prepared For: **Norstar Petroleum, Inc.**

88 Inverness CIR E. Unit F104
Englewood, CO 80112

ATTN: Bob Elder

36-9s-35w Thomas,KS

Barrett Survivors Trust #1-36

Start Date: 2013.03.06 @ 08:23:00

End Date: 2013.03.06 @ 14:15:30

Job Ticket #: 46892 DST #: 4

Trilobite Testing, Inc

PO Box 362 Hays, KS 67601

ph: 785-625-4778 fax: 785-625-5620

Printed: 2013.03.08 @ 14:54:58

Norstar Petroleum, Inc.

Barrett Survivors Trust #1-36

36-9s-35w Thomas,KS

DST # 4

Johnson

2013.03.06



TRILOBITE TESTING, INC.

DRILL STEM TEST REPORT

Norstar Petroleum, Inc.
 88 Inverness CIR E. Unit F104
 Englewood, CO 80112
 ATTN: Bob Elder

Barrett Survivors Trust #1-36
36-9s-35w Thomas,KS
 Job Ticket: 46892 **DST#: 4**
 Test Start: 2013.03.06 @ 08:23:00

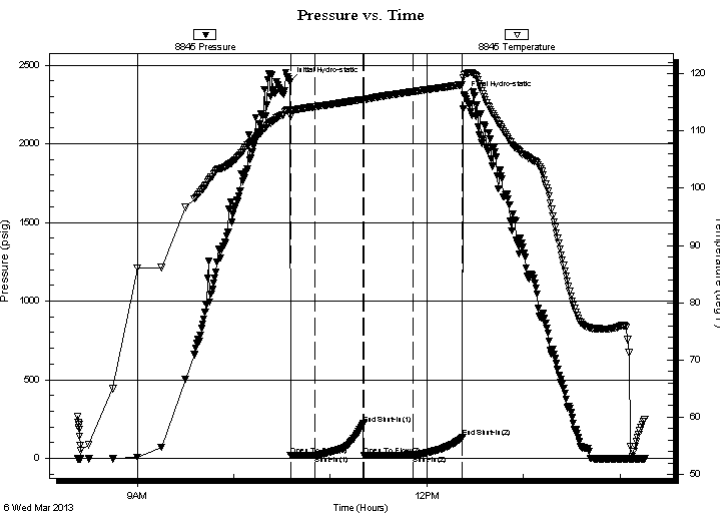
GENERAL INFORMATION:

Formation: **Johnson**
 Deviated: No Whipstock: ft (KB)
 Time Tool Opened: 10:35:15
 Time Test Ended: 14:15:30
Interval: 4705.00 ft (KB) To 4755.00 ft (KB) (TVD)
 Total Depth: 4755.00 ft (KB) (TVD)
 Hole Diameter: 7.88 inches Hole Condition: Good
 Test Type: Conventional Bottom Hole (Reset)
 Tester: Sam Esparza
 Unit No: 64
 Reference Elevations: 3289.00 ft (KB)
 3284.00 ft (CF)
 KB to GR/CF: 5.00 ft

Serial #: 8845 Outside

Press @ Run Depth: 22.39 psig @ 4706.00 ft (KB) Capacity: 8000.00 psig
 Start Date: 2013.03.06 End Date: 2013.03.06 Last Calib.: 2013.03.06
 Start Time: 08:23:05 End Time: 14:15:29 Time On Btm: 2013.03.06 @ 10:35:00
 Time Off Btm: 2013.03.06 @ 12:23:15

TEST COMMENT: IF: 1/4" blow.
 IS: No return.
 FF: No blow.
 FS: No return.



PRESSURE SUMMARY

Time (Min.)	Pressure (psig)	Temp (deg F)	Annotation
0	2393.30	113.80	Initial Hydro-static
1	19.13	112.61	Open To Flow (1)
16	19.94	114.26	Shut-In(1)
46	220.57	115.53	End Shut-In(1)
46	21.67	115.50	Open To Flow (2)
77	22.39	116.89	Shut-In(2)
107	132.77	118.09	End Shut-In(2)
109	2309.42	119.86	Final Hydro-static

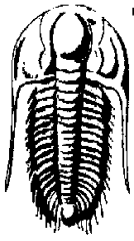
Recovery

Length (ft)	Description	Volume (bbl)
5.00	Mud 100 m (oil spots)	0.02

* Recovery from multiple tests

Gas Rates

Choke (inches)	Pressure (psig)	Gas Rate (Mcf/d)



**TRILOBITE
TESTING, INC.**

DRILL STEM TEST REPORT

Norstar Petroleum, Inc.
88 Inverness CIR E. Unit F104
Englewood, CO 80112
ATTN: Bob Elder

Barrett Survivors Trust #1-36
36-9s-35w Thomas, KS
Job Ticket: 46892 **DST#: 4**
Test Start: 2013.03.06 @ 08:23:00

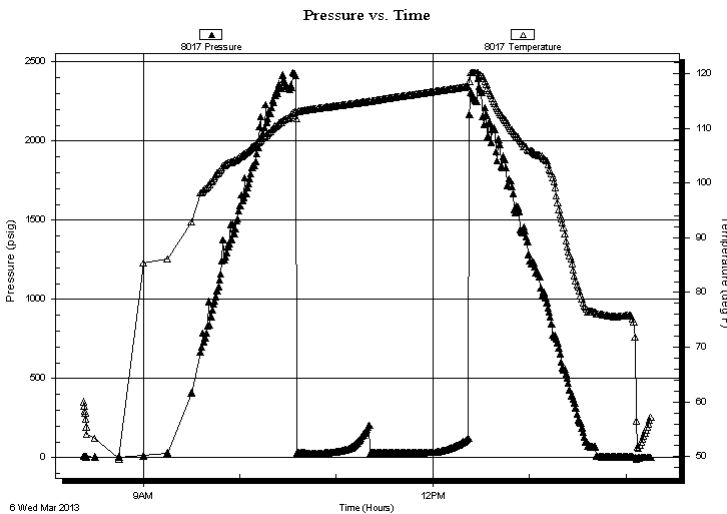
GENERAL INFORMATION:

Formation: **Johnson**
Deviated: No Whipstock: ft (KB)
Time Tool Opened: 10:35:15
Time Test Ended: 14:15:30
Interval: 4705.00 ft (KB) To 4755.00 ft (KB) (TVD)
Total Depth: 4755.00 ft (KB) (TVD)
Hole Diameter: 7.88 inches Hole Condition: Good
Test Type: Conventional Bottom Hole (Reset)
Tester: Sam Esparza
Unit No: 64
Reference Elevations: 3289.00 ft (KB)
3284.00 ft (CF)
KB to GR/CF: 5.00 ft

Serial #: 8017 Outside
Press @ RunDepth: psig @ 4706.00 ft (KB)
Start Date: 2013.03.06 End Date: 2013.03.06 Capacity: 8000.00 psig
Start Time: 08:23:05 End Time: 14:15:44 Last Calib.: 2013.03.06
Time On Btm:
Time Off Btm:

TEST COMMENT: IF: 1/4" blow.
IS: No return.
FF: No blow.
FS: No return.

PRESSURE SUMMARY



Time (Min.)	Pressure (psig)	Temp (deg F)	Annotation

Recovery

Length (ft)	Description	Volume (bbl)
5.00	Mud 100 m (oil spots)	0.02

* Recovery from multiple tests

Gas Rates

	Choke (inches)	Pressure (psig)	Gas Rate (Mcf/d)



**TRILOBITE
TESTING, INC.**

DRILL STEM TEST REPORT

TOOL DIAGRAM

Norstar Petroleum, Inc.

Barrett Survivors Trust #1-36

88 Inverness CIR E. Unit F104
Englewood, CO 80112

36-9s-35w Thomas,KS

Job Ticket: 46892

DST#: 4

ATTN: Bob Elder

Test Start: 2013.03.06 @ 08:23:00

Tool Information

Drill Pipe:	Length: 4571.00 ft	Diameter: 3.80 inches	Volume: 64.12 bbl	Tool Weight:	2000.00 lb
Heavy Wt. Pipe:	Length: 0.00 ft	Diameter: 0.00 inches	Volume: 0.00 bbl	Weight set on Packer:	30000.00 lb
Drill Collar:	Length: 124.00 ft	Diameter: 2.25 inches	Volume: 0.61 bbl	Weight to Pull Loose:	80000.00 lb
			<u>Total Volume: 64.73 bbl</u>	Tool Chased	0.00 ft
Drill Pipe Above KB:	18.00 ft			String Weight: Initial	58000.00 lb
Depth to Top Packer:	4705.00 ft			Final	58000.00 lb
Depth to Bottom Packer:	ft				
Interval between Packers:	50.00 ft				
Tool Length:	78.00 ft				
Number of Packers:	2	Diameter: 6.75 inches			

Tool Comments:

Tool Description

Length (ft) Serial No. Position Depth (ft) Accum. Lengths

Tool Description	Length (ft)	Serial No.	Position	Depth (ft)	Accum. Lengths
Change Over Sub	1.00			4678.00	
Shut In Tool	5.00			4683.00	
Hydraulic tool	5.00			4688.00	
Jars	5.00			4693.00	
Safety Joint	3.00			4696.00	
Packer	5.00			4701.00	28.00 Bottom Of Top Packer
Packer	4.00			4705.00	
Stubb	1.00			4706.00	
Recorder	0.00	8017	Outside	4706.00	
Recorder	0.00	8845	Outside	4706.00	
Perforations	10.00			4716.00	
Change Over Sub	1.00			4717.00	
Drill Pipe	32.00			4749.00	
Change Over Sub	1.00			4750.00	
Bullnose	5.00			4755.00	50.00 Bottom Packers & Anchor

Total Tool Length: 78.00



**TRILOBITE
TESTING, INC.**

DRILL STEM TEST REPORT

FLUID SUMMARY

Norstar Petroleum, Inc.

Barrett Survivors Trust #1-36

88 Inverness CIR E. Unit F104
Englewood, CO 80112

36-9s-35w Thomas,KS

Job Ticket: 46892

DST#: 4

ATTN: Bob Elder

Test Start: 2013.03.06 @ 08:23:00

Mud and Cushion Information

Mud Type: Gel Chem

Cushion Type:

Oil API:

deg API

Mud Weight: 9.00 lb/gal

Cushion Length:

ft

Water Salinity:

ppm

Viscosity: 53.00 sec/qt

Cushion Volume:

bbbl

Water Loss: 7.99 in³

Gas Cushion Type:

Resistivity: 0.00 ohm.m

Gas Cushion Pressure:

psig

Salinity: 8600.00 ppm

Filter Cake: 2.00 inches

Recovery Information

Recovery Table

Length ft	Description	Volume bbl
5.00	Mud 100 m (oil spots)	0.025

Total Length: 5.00 ft Total Volume: 0.025 bbl

Num Fluid Samples: 0

Num Gas Bombs: 0

Serial #:

Laboratory Name:

Laboratory Location:

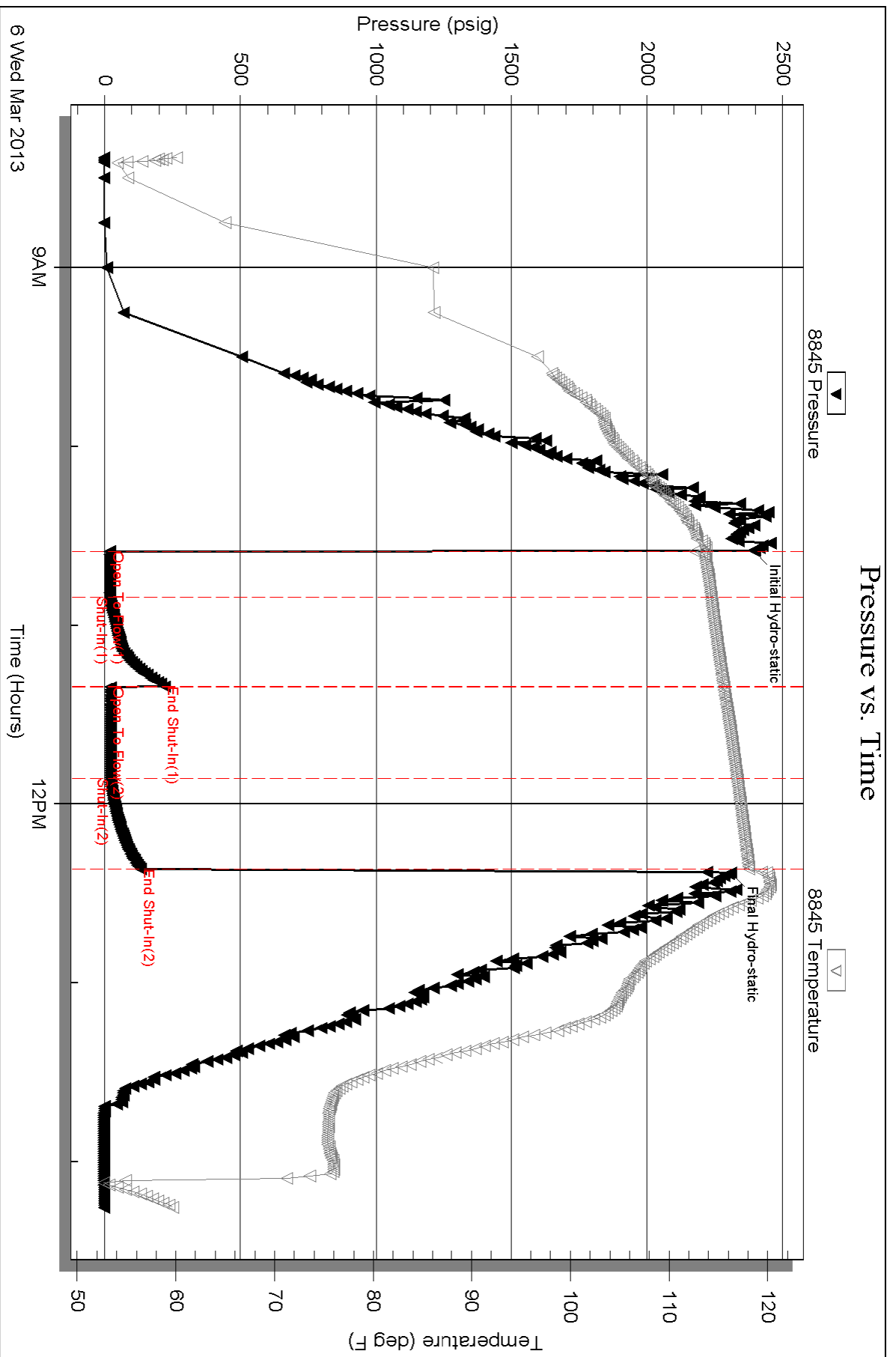
Recovery Comments:

Serial #: 8845

Outside Norstar Petroleum, Inc.

36-95-35w Thomas, KS

DST Test Number: 4

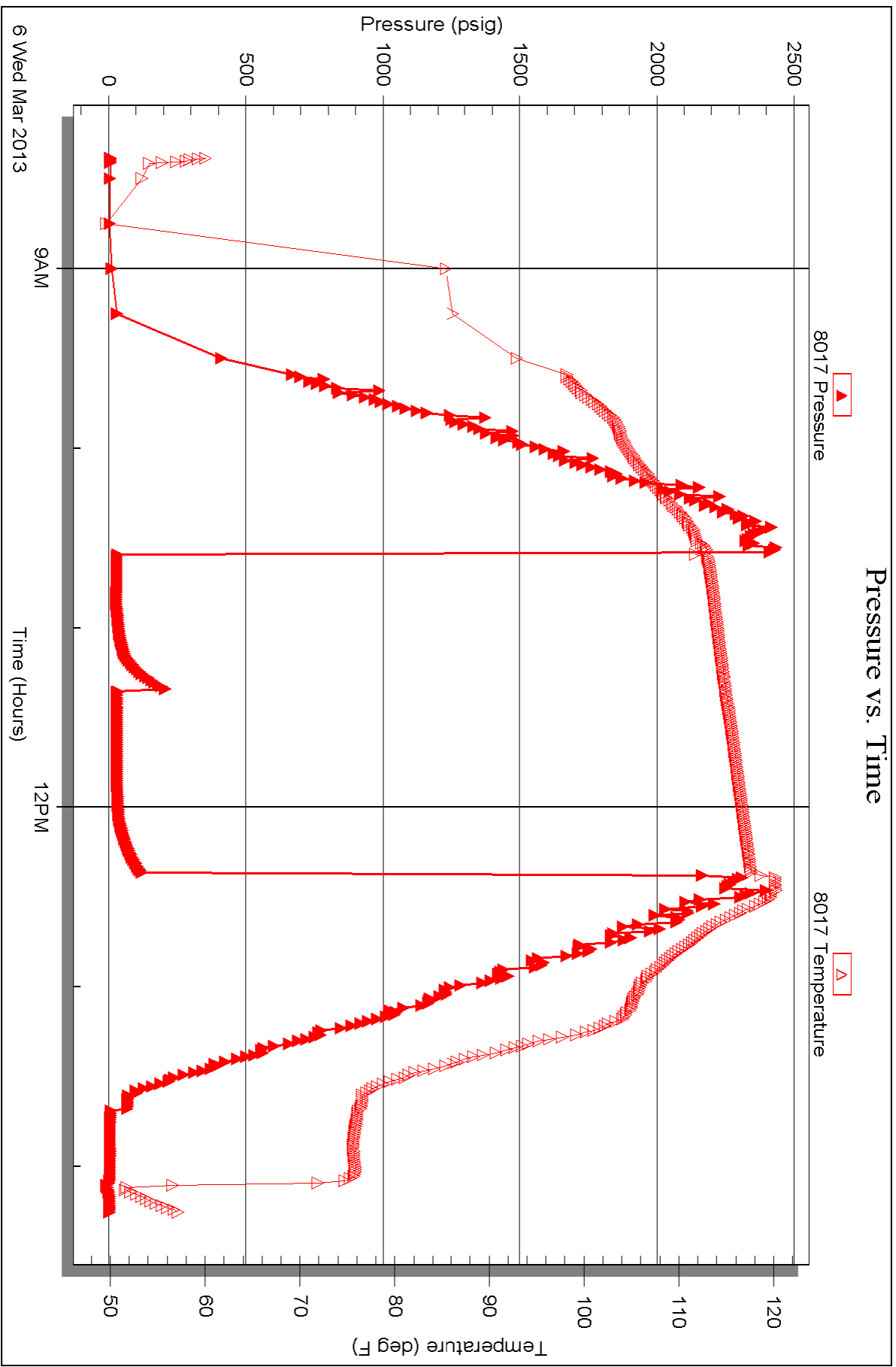


Serial #: 8017

Outside Norstar Petroleum, Inc.

36-95-35w Thomas, KS

DST Test Number: 4





TRILOBITE TESTING INC.

P.O. Box 1733 • Hays, Kansas 67601

Test Ticket

NO. 46889

Well Name & No. Barrett Survivors Trust #1-36 Test No. 1 Date 3/3/13
 Company Norstar Petroleum, Inc. Elevation 3289 KB 3284 GL
 Address 88 Inverness CIR E. Unit F104 Englewood, CO 80112
 Co. Rep / Geo. Bob Elder Rig WW #8
 Location: Sec. 36 Twp. 9S Rge. 35W Co. Thomas State K5

Interval Tested 4320-4400 Zone Tested "H-I-J"
 Anchor Length 80' Drill Pipe Run 4193 Mud Wt. 9.0
 Top Packer Depth 4316 Drill Collars Run 124 Vis 57
 Bottom Packer Depth 4320 Wt. Pipe Run Ø WL 6.4
 Total Depth 4400 Chlorides 5100 ppm System LCM 1
 Blow Description BoB @ 1 min.
No return.
BoB @ 1 min.
No return.

Rec	Feet of	%gas	%oil	%water	%mud
<u>2690</u>	<u>MW</u>			<u>80</u>	<u>20</u>
Rec	Feet of	%gas	%oil	%water	%mud
Rec	Feet of	%gas	%oil	%water	%mud
Rec	Feet of	%gas	%oil	%water	%mud
Rec	Feet of	%gas	%oil	%water	%mud

Rec Total 2690 BHT 129 Gravity — API RW .135 @ 60 °F Chlorides 70,000 ppm

(A) Initial Hydrostatic <u>2139</u>	<input checked="" type="checkbox"/> Test <u>1250</u>	T-On Location <u>12:40</u>
(B) First Initial Flow <u>591</u>	<input checked="" type="checkbox"/> Jars <u>250</u>	T-Started <u>13:26</u>
(C) First Final Flow <u>839</u>	<input checked="" type="checkbox"/> Safety Joint <u>75</u>	T-Open <u>15:10</u>
(D) Initial Shut-In <u>1260</u>	<input checked="" type="checkbox"/> Circ Sub <u>USED</u> <u>50</u>	T-Pulled <u>17:22</u>
(E) Second Initial Flow <u>895</u>	<input type="checkbox"/> Hourly Standby	T-Out <u>19:51</u>
(F) Second Final Flow <u>1207</u>	<input checked="" type="checkbox"/> Mileage <u>170 R/T</u> <u>263.50</u>	Comments
(G) Final Shut-In <u>1260</u>	<input type="checkbox"/> Sampler	
(H) Final Hydrostatic <u>2082</u>	<input type="checkbox"/> Straddle	<input type="checkbox"/> Ruined Shale Packer
Initial Open <u>10</u>	<input type="checkbox"/> Shale Packer	<input type="checkbox"/> Ruined Packer
Initial Shut-In <u>30</u>	<input type="checkbox"/> Extra Packer	<input type="checkbox"/> Extra Copies
Final Flow <u>30</u>	<input type="checkbox"/> Extra Recorder	Sub Total <u>0</u>
Final Shut-In <u>60</u>	<input type="checkbox"/> Day Standby	Total <u>1888.50</u>
	<input type="checkbox"/> Accessibility	MP/DST Disc't
	Sub Total <u>1888.50</u>	

Approved By

Our Representative

Trilobite Testing Inc. shall not be liable for damaged of any kind of the property or personnel of the one for whom a test is made, or for any loss suffered or sustained, directly or indirectly, through the use of its equipment, or its statements or opinion concerning the results of any test, tools lost or damaged in the hole shall be paid for at cost by the party for whom the test is made.



TRILOBITE TESTING INC.

P.O. Box 1733 • Hays, Kansas 67601

Test Ticket

NO. 46890

Well Name & No. Barrett Survivors Trust #1-36 Test No. 2 Date 3/4/13
 Company Norstar Petroleum, Inc. Elevation 3289 KB 3284 GL
 Address 88 Inverness CIR E. Unit F104 Englewood, CO 80112
 Co. Rep / Geo. Bob Elder Rig WW #8
 Location: Sec. 36 Twp. 9S Rge. 35W Co. Thomas State KS

Interval Tested 4403 - 4435 Zone Tested "K"
 Anchor Length 32 Drill Pipe Run ~~4256~~ 4256 Mud Wt. 9.1
 Top Packer Depth 4399 Drill Collars Run 124 Vis 54
 Bottom Packer Depth 4403 Wt. Pipe Run Ø WL 6.4
 Total Depth 4435 Chlorides 6200 ppm System LCM 1

Blow Description Weak surface blows
No return.
No blow.
No return.

Rec	Feet of	%gas	%oil	%water	%mud
<u>5</u>	<u>Mud</u>			<u>100</u>	
Rec	Feet of	%gas	%oil	%water	%mud
Rec	Feet of	%gas	%oil	%water	%mud
Rec	Feet of	%gas	%oil	%water	%mud
Rec	Feet of	%gas	%oil	%water	%mud

Rec Total 5 BHT 118 Gravity — API RW — @ — F Chlorides — ppm

(A) Initial Hydrostatic <u>2178</u>	<input checked="" type="checkbox"/> Test <u>1250</u>	T-On Location <u>4:10</u>
(B) First Initial Flow <u>15</u>	<input checked="" type="checkbox"/> Jars <u>250</u>	T-Started <u>4:30</u>
(C) First Final Flow <u>18</u>	<input checked="" type="checkbox"/> Safety Joint <u>75</u>	T-Open <u>6:38</u>
(D) Initial Shut-In <u>1264</u>	<input checked="" type="checkbox"/> Circ Sub <u>N/C</u>	T-Pulled <u>8:23</u>
(E) Second Initial Flow <u>19</u>	<input type="checkbox"/> Hourly Standby	T-Out <u>10:12</u>
(F) Second Final Flow <u>25</u>	<input checked="" type="checkbox"/> Mileage <u>170 RT</u> 263.50	Comments
(G) Final Shut-In <u>1171</u>	<input type="checkbox"/> Sampler	
(H) Final Hydrostatic <u>2110</u>	<input type="checkbox"/> Straddle	<input type="checkbox"/> Ruined Shale Packer
Initial Open <u>15</u>	<input type="checkbox"/> Shale Packer	<input type="checkbox"/> Ruined Packer
Initial Shut-In <u>30</u>	<input type="checkbox"/> Extra Packer	<input type="checkbox"/> Extra Copies
Final Flow <u>30</u>	<input type="checkbox"/> Extra Recorder	Sub Total <u>0</u>
Final Shut-In <u>30</u>	<input type="checkbox"/> Day Standby	Total <u>1838.50</u>
	<input type="checkbox"/> Accessibility	MP/DST Disc't
	Sub Total <u>1838.50</u>	

Approved By Roy Ed Our Representative [Signature]

Trilobite Testing Inc. shall not be liable for damaged of any kind of the property or personnel of the one for whom a test is made, or for any loss suffered or sustained, directly or indirectly, through the use of its equipment, or its statements or opinion concerning the results of any test, tools lost or damaged in the hole shall be paid for at cost by the party for whom the test is made.



TRILOBITE TESTING INC.

P.O. Box 1733 • Hays, Kansas 67601

Test Ticket

NO. 46891

Well Name & No. Barratt Survivors Trust #1-36 Test No. 3 Date 3/5/13
 Company Norstar Petroleum, Inc. Elevation 3289 KB 3284 GL
 Address 88 Inverness CIR E. Unit F104 Englewood, CO 80112
 Co. Rep / Geo. Bob Elder Rig WW #8
 Location: Sec. 36 Twp. 9S Rge. 3SW Co. Thomas State KS

Interval Tested 4624 - 4674 Zone Tested Ft. Scott
 Anchor Length 50' Drill Pipe Run 4477 Mud Wt. 9.3
 Top Packer Depth 4620 Drill Collars Run 124 Vis 56
 Bottom Packer Depth 4624 Wt. Pipe Run Ø WL 6.8
 Total Depth 4674 Chlorides 6900 ppm System LCM 1

Blow Description 1/2" blow.
No return.
No blow.
No return.

Rec	Feet of	%gas	%oil	%water	%mud
<u>10</u>	<u>Mud</u>			<u>100%</u>	
Rec	Feet of	%gas	%oil	%water	%mud
Rec	Feet of	%gas	%oil	%water	%mud
Rec	Feet of	%gas	%oil	%water	%mud
Rec	Feet of	%gas	%oil	%water	%mud

Rec Total 10 BHT 118 Gravity - API RW - @ - ° F Chlorides - ppm

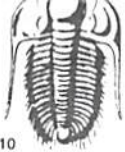
(A) Initial Hydrostatic	<u>2356</u>	<input checked="" type="checkbox"/> Test	<u>1250</u>	T-On Location	<u>10:00</u>
(B) First Initial Flow	<u>22</u>	<input checked="" type="checkbox"/> Jars	<u>250</u>	T-Started	<u>13:06</u>
(C) First Final Flow	<u>26</u>	<input checked="" type="checkbox"/> Safety Joint	<u>75</u>	T-Open	<u>15:11</u>
(D) Initial Shut-In	<u>434</u>	<input checked="" type="checkbox"/> Circ Sub	<u>N/C</u>	T-Pulled	<u>16:56</u>
(E) Second Initial Flow	<u>27</u>	<input type="checkbox"/> Hourly Standby		T-Out	<u>18:38</u>
(F) Second Final Flow	<u>30</u>	<input checked="" type="checkbox"/> Mileage	<u>170 R/T</u> 263.50	Comments	<u>pulled tight - short trip started back out @ 11:35</u>
(G) Final Shut-In	<u>396</u>	<input type="checkbox"/> Sampler			
(H) Final Hydrostatic	<u>2284</u>	<input type="checkbox"/> Straddle		<input type="checkbox"/> Ruined Shale Packer	

Initial Open 15
 Initial Shut-In 30
 Final Flow 30
 Final Shut-In 30

Sub Total 1838.50 MP/DST Disc't

Approved By Bob Elder Our Representative [Signature]

Trilobite Testing Inc. shall not be liable for damaged of any kind of the property or personnel of the one for whom a test is made, or for any loss suffered or sustained, directly or indirectly, through the use of its equipment, or its statements or opinion concerning the results of any test, tools lost or damaged in the hole shall be paid for at cost by the party for whom the test is made.



TRILOBITE TESTING INC.

P.O. Box 1733 • Hays, Kansas 67601

Test Ticket

NO. 46892

Well Name & No. Berrett Survivors Trust #1-36 Test No. 4 Date 3/6/13
 Company Norstar Petroleum, Inc. Elevation 3289 KB 3284 GL
 Address 88 Inverness CIR E. Unit F104 Englewood, CO 80112
 Co. Rep / Geo. Bob Elder Rig WW #8
 Location: Sec. 36 Twp. 9S Rge. 35W Co. Thomas State KS

Interval Tested 4705 - 4755 Zone Tested Johnson
 Anchor Length 50' Drill Pipe Run 4571 Mud Wt. 9.2
 Top Packer Depth 4701 Drill Collars Run 124 Vis 53
 Bottom Packer Depth 4705 Wt. Pipe Run Ø WL 8.0
 Total Depth 4755 Chlorides 8600 ppm System LCM 1

Blow Description 1" blow.
No return.
No blow.
No return

Rec	Feet of	%gas	%oil	%water	%mud
<u>5</u>	<u>Mud (oil spots)</u>			<u>100</u>	
Rec	Feet of	%gas	%oil	%water	%mud
Rec	Feet of	%gas	%oil	%water	%mud
Rec	Feet of	%gas	%oil	%water	%mud
Rec	Feet of	%gas	%oil	%water	%mud

Rec Total 5 BHT 118 Gravity — API RW — @ — °F Chlorides — ppm

(A) Initial Hydrostatic <u>2393</u>	<input checked="" type="checkbox"/> Test <u>1250</u>	T-On Location <u>7:40</u>
(B) First Initial Flow <u>19</u>	<input checked="" type="checkbox"/> Jars <u>250</u>	T-Started <u>8:23</u>
(C) First Final Flow <u>20</u>	<input checked="" type="checkbox"/> Safety Joint <u>75</u>	T-Open <u>10:35</u>
(D) Initial Shut-In <u>221</u>	<input checked="" type="checkbox"/> Circ Sub <u>N/C</u>	T-Pulled <u>12:22</u>
(E) Second Initial Flow <u>22</u>	<input type="checkbox"/> Hourly Standby	T-Out <u>14:15</u>
(F) Second Final Flow <u>22</u>	<input checked="" type="checkbox"/> Mileage <u>170 R/T</u> 263.50	Comments <u>loaded tools</u>
(G) Final Shut-In <u>133</u>	<input type="checkbox"/> Sampler	
(H) Final Hydrostatic <u>2309</u>	<input type="checkbox"/> Straddle	

Initial Open <u>15</u>	<input type="checkbox"/> Ruined Shale Packer
Initial Shut-In <u>30</u>	<input type="checkbox"/> Ruined Packer
Final Flow <u>30</u>	<input type="checkbox"/> Extra Copies
Final Shut-In <u>30</u>	Sub Total <u>0</u>
	Total <u>1838.50</u>
	MP/DST Disc't

Approved By [Signature] Our Representative [Signature]

Trilobite Testing Inc. shall not be liable for damaged of any kind of the property or personnel of the one for whom a test is made, or for any loss suffered or sustained, directly or indirectly, through the use of its equipment, or its statements or opinion concerning the results of any test, tools lost or damaged in the hole shall be paid for at cost by the party for whom the test is made.