



## DRILL STEM TEST REPORT

Prepared For: **RJM Coampany**

Po Box 256 Claflin Kansas  
67525

ATTN: Kurt

**Prosser #1**

**31-15s-13w**

Start Date: 2013.02.15 @ 03:55:00

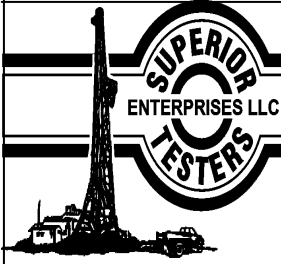
End Date: 2013.02.15 @ 08:49:30

Job Ticket #: 17418                      DST #: 1

Superior Testers Enterprises LLC  
PO Box 138 Great Bend KS 67530  
1-800-792-6902

Printed: 2013.02.15 @ 09:09:05





# DRILL STEM TEST REPORT

RJM Coampany  
 Po Box 256 Claflin Kansas  
 67525  
 ATTN: Kurt

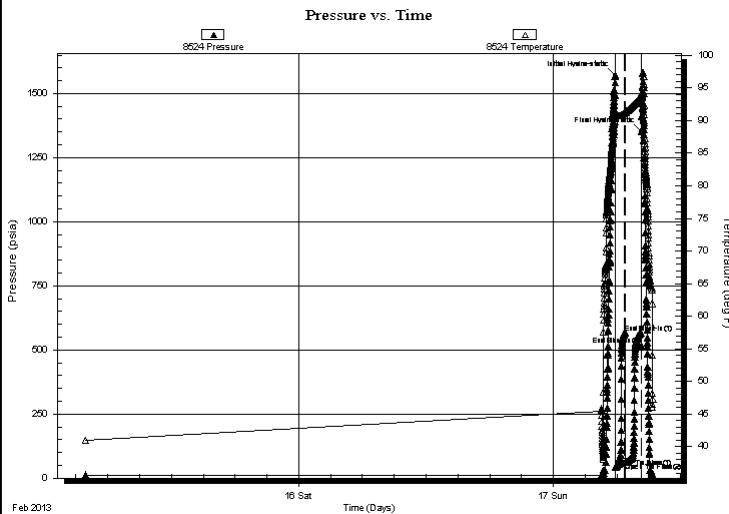
**31-15s-13w**  
**Prosser #1**  
 Job Ticket: 17418 **DST#: 1**  
 Test Start: 2013.02.15 @ 03:55:00

## GENERAL INFORMATION:

Formation: **Lasing A-B**  
 Deviated: No Whipstock: ft (KB)  
 Time Tool Opened: 05:16:00  
 Time Test Ended: 08:49:30  
 Test Type: Conventional Bottom Hole (Initial)  
 Tester: Dustin Ellis  
 Unit No: 3315- Great Bend-60  
 Interval: **3083.00 ft (KB) To 3115.00 ft (KB) (TVD)**  
 Reference Elevations: 1909.00 ft (KB)  
 Total Depth: 3115.00 ft (KB) (TVD)  
 1902.00 ft (CF)  
 Hole Diameter: 7.88 inches Hole Condition: Fair  
 KB to GR/CF: 7.00 ft

**Serial #: 8524 Inside**  
 Press@RunDepth: 517.25 psia @ 3111.00 ft (KB) Capacity: 5000.00 psia  
 Start Date: 2013.02.15 End Date: 2013.02.17 Last Calib.: 2013.02.15  
 Start Time: 03:55:00 End Time: 09:21:19 Time On Btm: 2013.02.17 @ 05:48:31  
 Time Off Btm: 2013.02.17 @ 08:18:33

**TEST COMMENT:** 1st Open 30 minutes Weak building blow built to 3 inches into the w ater.  
 1st Shut in 30 minutes No blow back.  
 2nd Open 45 minutes Weak building blow built to 3 inches into the w ater.  
 2nd Shut in 45 minutes No blow back.



## PRESSURE SUMMARY

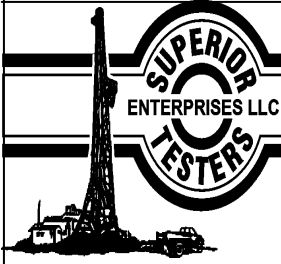
Time (Min.)	Pressure (psia)	Temp (deg F)	Annotation
0	1571.66	90.52	Initial Hydro-static
1	40.99	89.81	Open To Flow (1)
55	564.94	91.15	End Shut-In(1)
61	61.15	91.27	Open To Flow (2)
151	517.25	93.55	End Shut-In(2)
151	1352.37	94.02	Final Hydro-static

## Recovery

Length (ft)	Description	Volume (bbl)
90.00	Muddy w ater 80%w ater 20%mud	1.26
0.00	Chlorides	0.00

## Gas Rates

Choke (inches)	Pressure (psia)	Gas Rate (Mcf/d)



# DRILL STEM TEST REPORT

**TOOL DIAGRAM**

RJM Coampany

**31-15s-13w**

Po Box 256 Claflin Kansas  
67525

**Prosser #1**

Job Ticket: 17418

**DST#: 1**

ATTN: Kurt

Test Start: 2013.02.15 @ 03:55:00

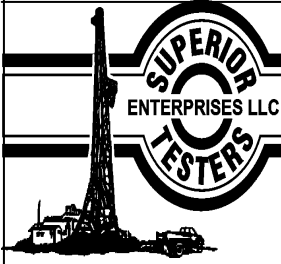
## Tool Information

Drill Pipe:	Length: 3070.00 ft	Diameter: 3.80 inches	Volume: 43.06 bbl	Tool Weight:	2000.00 lb
Heavy Wt. Pipe:	Length: 0.00 ft	Diameter: 0.00 inches	Volume: 0.00 bbl	Weight set on Packer:	20000.00 lb
Drill Collar:	Length: 0.00 ft	Diameter: 0.00 inches	Volume: 0.00 bbl	Weight to Pull Loose:	35000.00 lb
			<u>Total Volume: 43.06 bbl</u>	Tool Chased	0.00 ft
Drill Pipe Above KB:	7.00 ft			String Weight: Initial	30000.00 lb
Depth to Top Packer:	3083.00 ft			Final	31000.00 lb
Depth to Bottom Packer:	ft				
Interval between Packers:	32.00 ft				
Tool Length:	52.00 ft				
Number of Packers:	2	Diameter: 6.75 inches			
Tool Comments:					

Tool Description	Length (ft)	Serial No.	Position	Depth (ft)	Accum. Lengths
------------------	-------------	------------	----------	------------	----------------

Shut-In Tool	5.00			3068.00	
Hydraulic Tool	5.00			3073.00	
Packer	5.00			3078.00	20.00 Bottom Of Top Packer
Packer	5.00			3083.00	
Anchor	27.00			3110.00	
Recorder	1.00	8524	Inside	3111.00	
Recorder	1.00	6839	Outside	3112.00	
Bullnose	3.00			3115.00	32.00 Bottom Packers & Anchor

**Total Tool Length: 52.00**



# DRILL STEM TEST REPORT

## FLUID SUMMARY

RJM Coampany

**31-15s-13w**

Po Box 256 Claflin Kansas  
67525

**Prosser #1**

Job Ticket: 17418

**DST#: 1**

ATTN: Kurt

Test Start: 2013.02.15 @ 03:55:00

### Mud and Cushion Information

Mud Type: Gel Chem

Cushion Type:

Oil API:

deg API

Mud Weight: 9.00 lb/gal

Cushion Length:

ft

Water Salinity:

ppm

Viscosity: 70.00 sec/qt

Cushion Volume:

bbbl

Water Loss: 7.60 in<sup>3</sup>

Gas Cushion Type:

Resistivity: ohm.m

Gas Cushion Pressure:

psia

Salinity: 1000.00 ppm

Filter Cake: 1.00 inches

### Recovery Information

Recovery Table

Length ft	Description	Volume bbl
90.00	Muddy w ater 80%w ater 20%mud	1.262
0.00	Chlorides	0.000

Total Length: 90.00 ft      Total Volume: 1.262 bbl

Num Fluid Samples: 0

Num Gas Bombs: 0

Serial #:

Laboratory Name:

Laboratory Location:

Recovery Comments:

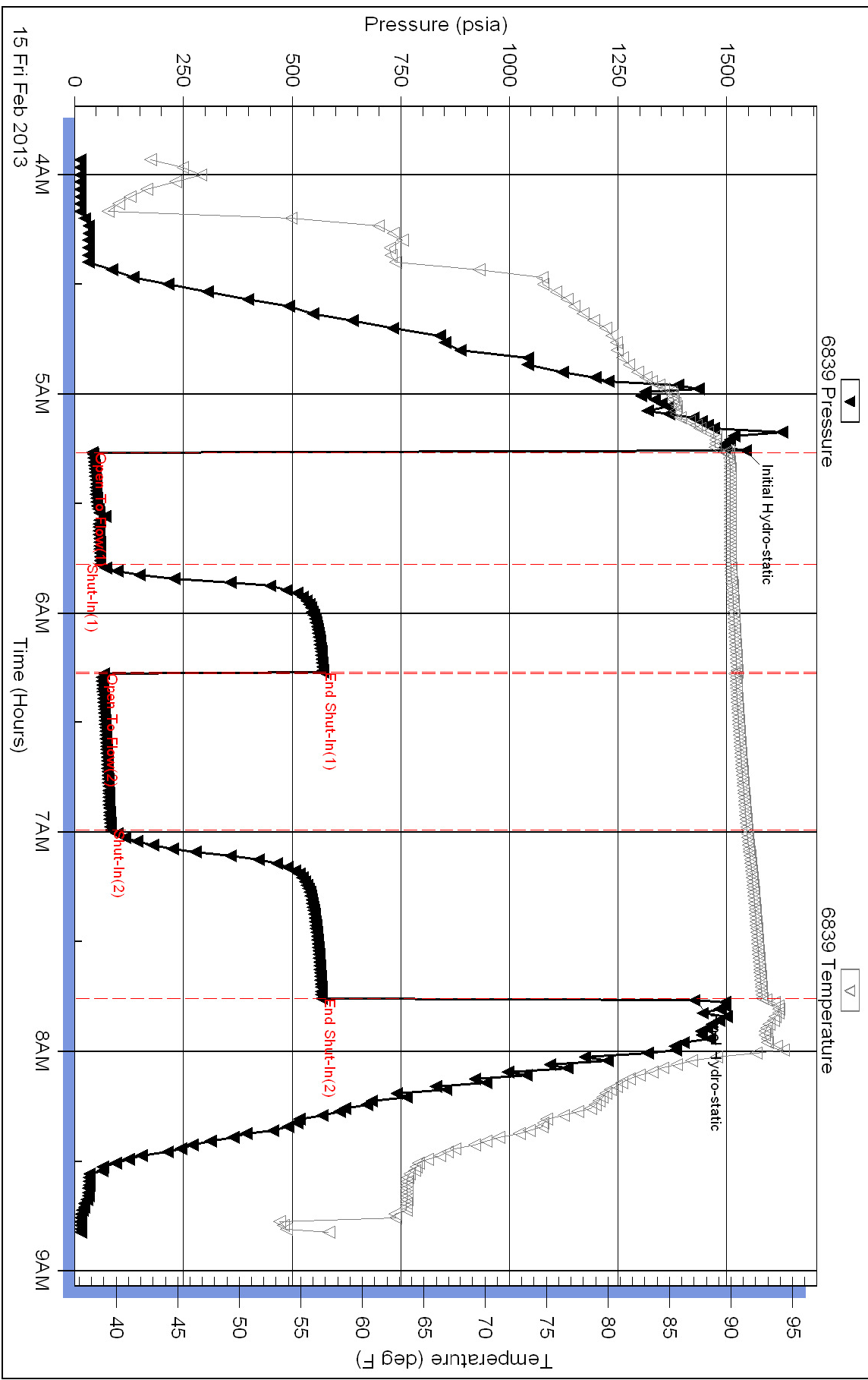
Serial #: 6839

Outside RJM Coampany

Prosser #1

DST Test Number: 1

### Pressure vs. Time



Serial #: 8524

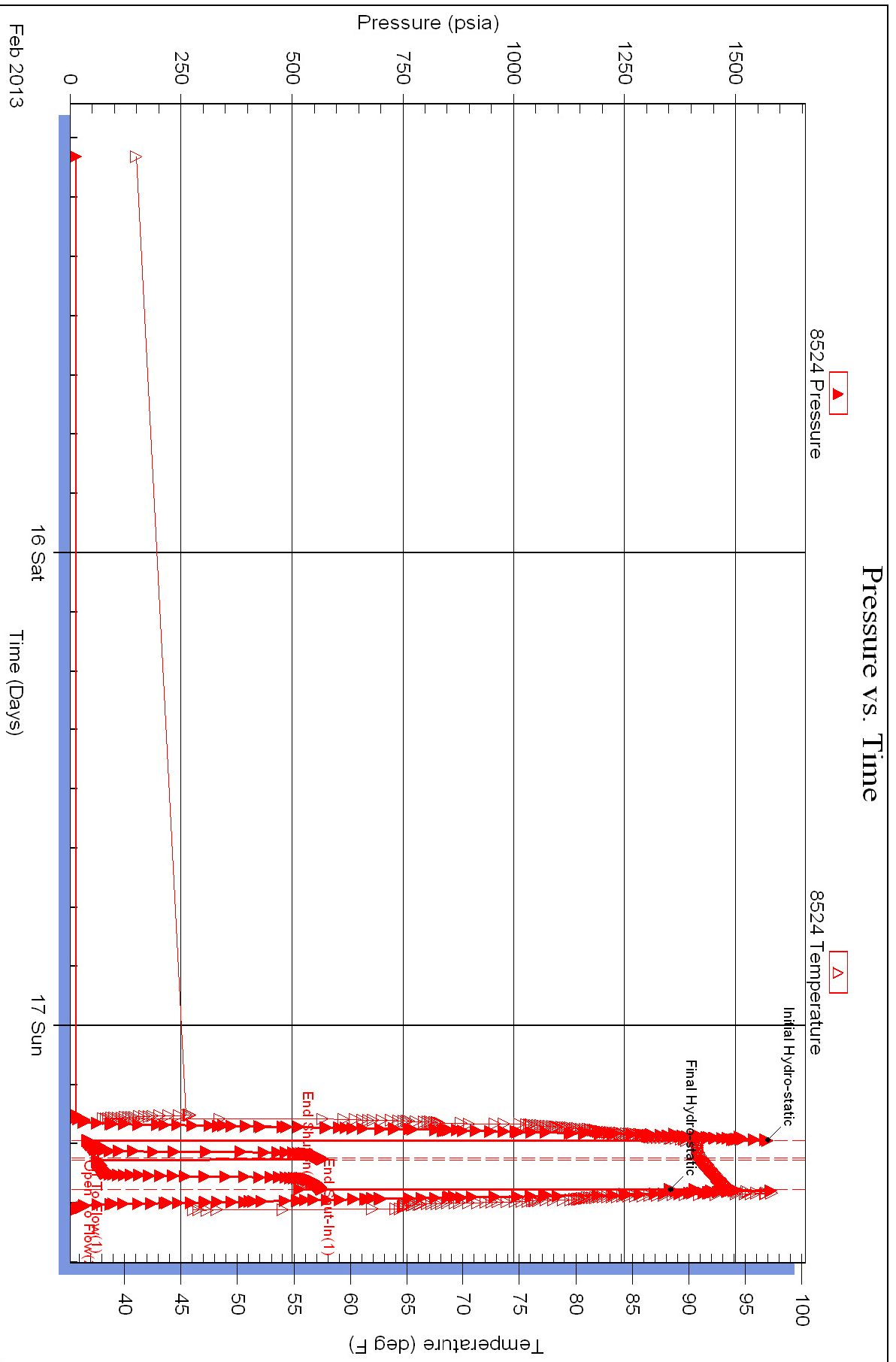
Inside

RJM Company

Posser #1

DST Test Number: 1

### Pressure vs. Time



Superior Testers Enterprises LLC

Ref. No: 17418

Printed: 2013.02.15 @ 09:09:06