



## DRILL STEM TEST REPORT

Prepared For: **RJM Coampany**

Po Box 256 Claflin Kansas  
67525

ATTN: Kurt

### **Prosser #1**

### **31-15s-13w-Russell**

Start Date: 2013.02.16 @ 03:10:00

End Date: 2013.02.16 @ 08:00:00

Job Ticket #: 17420                      DST #: 3

Superior Testers Enterprises LLC  
PO Box 138 Great Bend KS 67530  
1-800-792-6902

Printed: 2013.02.16 @ 08:19:49



# DRILL STEM TEST REPORT

RJM Coampany  
 Po Box 256 Claflin Kansas  
 67525  
 ATTN: Kurt

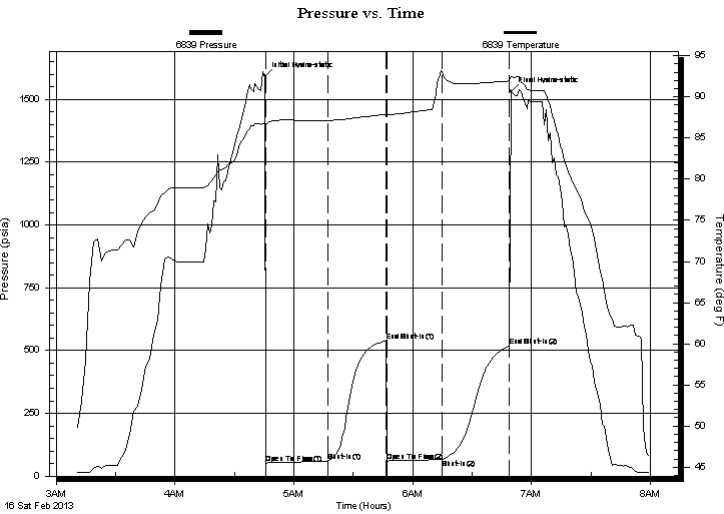
**31-15s-13w-Russell**  
**Prosser #1**  
 Job Ticket: 17420 **DST#: 3**  
 Test Start: 2013.02.16 @ 03:10:00

## GENERAL INFORMATION:

Formation: **Lansing G**  
 Deviated: No Whipstock: ft (KB)  
 Time Tool Opened: 04:46:00  
 Time Test Ended: 08:00:00  
 Test Type: Conventional Bottom Hole (Initial)  
 Tester: Dustin Ellis  
 Unit No: 3315-Great Bend-60  
 Interval: **3140.00 ft (KB) To 3195.00 ft (KB) (TVD)**  
 Reference Elevations: 1909.00 ft (KB)  
 Total Depth: 3195.00 ft (KB) (TVD) 1902.00 ft (CF)  
 Hole Diameter: 7.88 inches Hole Condition: Fair KB to GR/CF: 7.00 ft

**Serial #: 6839 Outside**  
 Press@RunDepth: 65.77 psia @ 3192.43 ft (KB) Capacity: 5000.00 psia  
 Start Date: 2013.02.16 End Date: 2013.02.16 Last Calib.: 2013.02.16  
 Start Time: 03:10:00 End Time: 08:00:00 Time On Btm: 2013.02.16 @ 04:45:30  
 Time Off Btm: 2013.02.16 @ 06:49:30

**TEST COMMENT:** 1st Open 30 minutes Weak surface blow through out.  
 1st Shut in 30 minutes No blow back  
 2nd Open 30 minutes Weak surface blow through out.  
 2nd Shut in 30 minutes No blow back.



## PRESSURE SUMMARY

Time (Min.)	Pressure (psia)	Temp (deg F)	Annotation
0	1592.20	86.76	Initial Hydro-static
1	51.98	86.60	Open To Flow (1)
32	59.33	87.14	Shut-In(1)
61	537.86	87.88	End Shut-In(1)
62	60.98	87.69	Open To Flow (2)
90	65.77	93.11	Shut-In(2)
123	516.07	91.91	End Shut-In(2)
124	1532.39	92.46	Final Hydro-static

## Recovery

Length (ft)	Description	Volume (bbl)
30.00	Mud 100%	0.42

## Gas Rates

Choke (inches)	Pressure (psia)	Gas Rate (Mcf/d)



# DRILL STEM TEST REPORT

RJM Coampany

**31-15s-13w-Russell**

Po Box 256 Claflin Kansas  
67525

**Prosser #1**

Job Ticket: 17420

**DST#: 3**

ATTN: Kurt

Test Start: 2013.02.16 @ 03:10:00

## GENERAL INFORMATION:

Formation: **Lansing G**

Deviated: No Whipstock: ft (KB)

Time Tool Opened: 04:46:00

Time Test Ended: 08:00:00

Test Type: Conventional Bottom Hole (Initial)

Tester: Dustin Ellis

Unit No: 3315-Great Bend-60

**Interval: 3140.00 ft (KB) To 3195.00 ft (KB) (TVD)**

Reference Elevations: 1909.00 ft (KB)

Total Depth: 3195.00 ft (KB) (TVD)

1902.00 ft (CF)

Hole Diameter: 7.88 inches Hole Condition: Fair

KB to GR/CF: 7.00 ft

**Serial #: 8524 Inside**

Press@RunDepth: 414.06 psia @ 3191.43 ft (KB)

Capacity: 5000.00 psia

Start Date: 2013.02.16 End Date: 2013.02.16

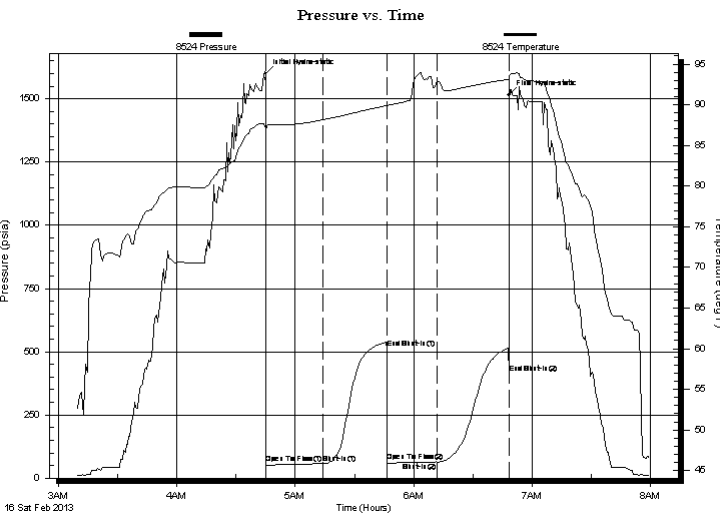
Last Calib.: 2013.02.16

Start Time: 03:10:00 End Time: 07:59:45

Time On Btm: 2013.02.16 @ 04:45:09

Time Off Btm: 2013.02.16 @ 06:48:09

**TEST COMMENT:** 1st Open 30 minutes Weak surface blow through out.  
1st Shut in 30 minutes No blow back  
2nd Open 30 minutes Weak surface blow through out.  
2nd Shut in 30 minutes No blow back.



## PRESSURE SUMMARY

Time (Min.)	Pressure (psia)	Temp (deg F)	Annotation
0	1601.59	87.44	Initial Hydro-static
1	58.84	86.78	Open To Flow (1)
29	57.59	88.16	Shut-In(1)
62	513.69	89.89	End Shut-In(1)
62	65.47	89.80	Open To Flow (2)
87	64.12	92.86	Shut-In(2)
123	414.06	93.10	End Shut-In(2)
123	1515.94	93.63	Final Hydro-static

## Recovery

Length (ft)	Description	Volume (bbl)
30.00	Mud 100%	0.42

## Gas Rates

Choke (inches)	Pressure (psia)	Gas Rate (Mcf/d)



# DRILL STEM TEST REPORT

**TOOL DIAGRAM**

RJM Coampany  
 Po Box 256 Claflin Kansas  
 67525  
 ATTN: Kurt

**31-15s-13w-Russell**  
**Prosser #1**  
 Job Ticket: 17420      **DST#: 3**  
 Test Start: 2013.02.16 @ 03:10:00

**Tool Information**

Drill Pipe:	Length: 3129.00 ft	Diameter: 3.80 inches	Volume: 43.89 bbl	Tool Weight: 2000.00 lb
Heavy Wt. Pipe:	Length: 0.00 ft	Diameter: 0.00 inches	Volume: 0.00 bbl	Weight set on Packer: 20000.00 lb
Drill Collar:	Length: 0.00 ft	Diameter: 0.00 inches	Volume: 0.00 bbl	Weight to Pull Loose: 30000.00 lb
			<u>Total Volume: 43.89 bbl</u>	Tool Chased 0.00 ft
Drill Pipe Above KB:	9.00 ft			String Weight: Initial 30000.00 lb
Depth to Top Packer:	3140.00 ft			Final 30000.00 lb
Depth to Bottom Packer:	ft			
Interval between Packers:	55.43 ft			
Tool Length:	75.43 ft			
Number of Packers:	2	Diameter: 6.75 inches		

Tool Comments:

<b>Tool Description</b>	<b>Length (ft)</b>	<b>Serial No.</b>	<b>Position</b>	<b>Depth (ft)</b>	<b>Accum. Lengths</b>
-------------------------	--------------------	-------------------	-----------------	-------------------	-----------------------

Shut-In Tool	5.00			3125.00	
Hydraulic Tool	5.00			3130.00	
Packer	5.00			3135.00	20.00      Bottom Of Top Packer
Packer	5.00			3140.00	
Anchor	5.00			3145.00	
Change Over Sub	0.75			3145.75	
Drill Pipe	30.93			3176.68	
Change Over Sub	0.75			3177.43	
Anchor	13.00			3190.43	
Recorder	1.00	8524	Inside	3191.43	
Recorder	1.00	6839	Outside	3192.43	
Bullnose	3.00			3195.43	55.43      Bottom Packers & Anchor

**Total Tool Length: 75.43**



# DRILL STEM TEST REPORT

## FLUID SUMMARY

RJM Coampany

**31-15s-13w-Russell**

Po Box 256 Claflin Kansas  
67525

**Prosser #1**

Job Ticket: 17420

**DST#: 3**

ATTN: Kurt

Test Start: 2013.02.16 @ 03:10:00

### Mud and Cushion Information

Mud Type: Gel Chem

Mud Weight: 0.00 lb/gal

Viscosity: 52.00 sec/qt

Water Loss: 8.00 in<sup>3</sup>

Resistivity: ohm.m

Salinity: 2500.00 ppm

Filter Cake: 0.00 inches

Cushion Type:

Cushion Length: ft

Cushion Volume: bbl

Gas Cushion Type:

Gas Cushion Pressure: psia

Oil API:

Water Salinity: ppm

deg API

### Recovery Information

Recovery Table

Length ft	Description	Volume bbl
30.00	Mud 100%	0.421

Total Length: 30.00 ft      Total Volume: 0.421 bbl

Num Fluid Samples: 0

Num Gas Bombs: 0

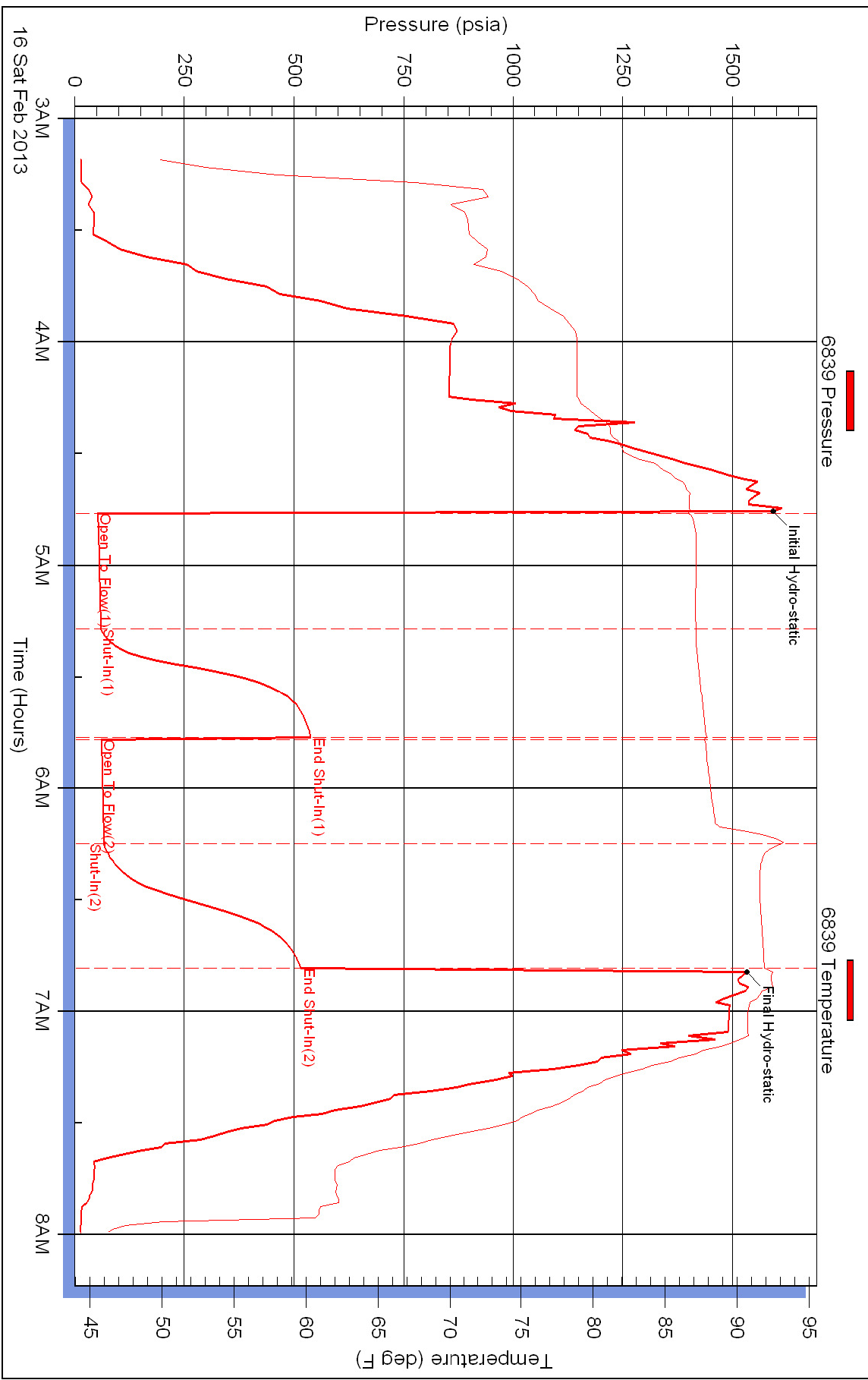
Serial #:

Laboratory Name:

Laboratory Location:

Recovery Comments:

### Pressure vs. Time



Serial #: 8524

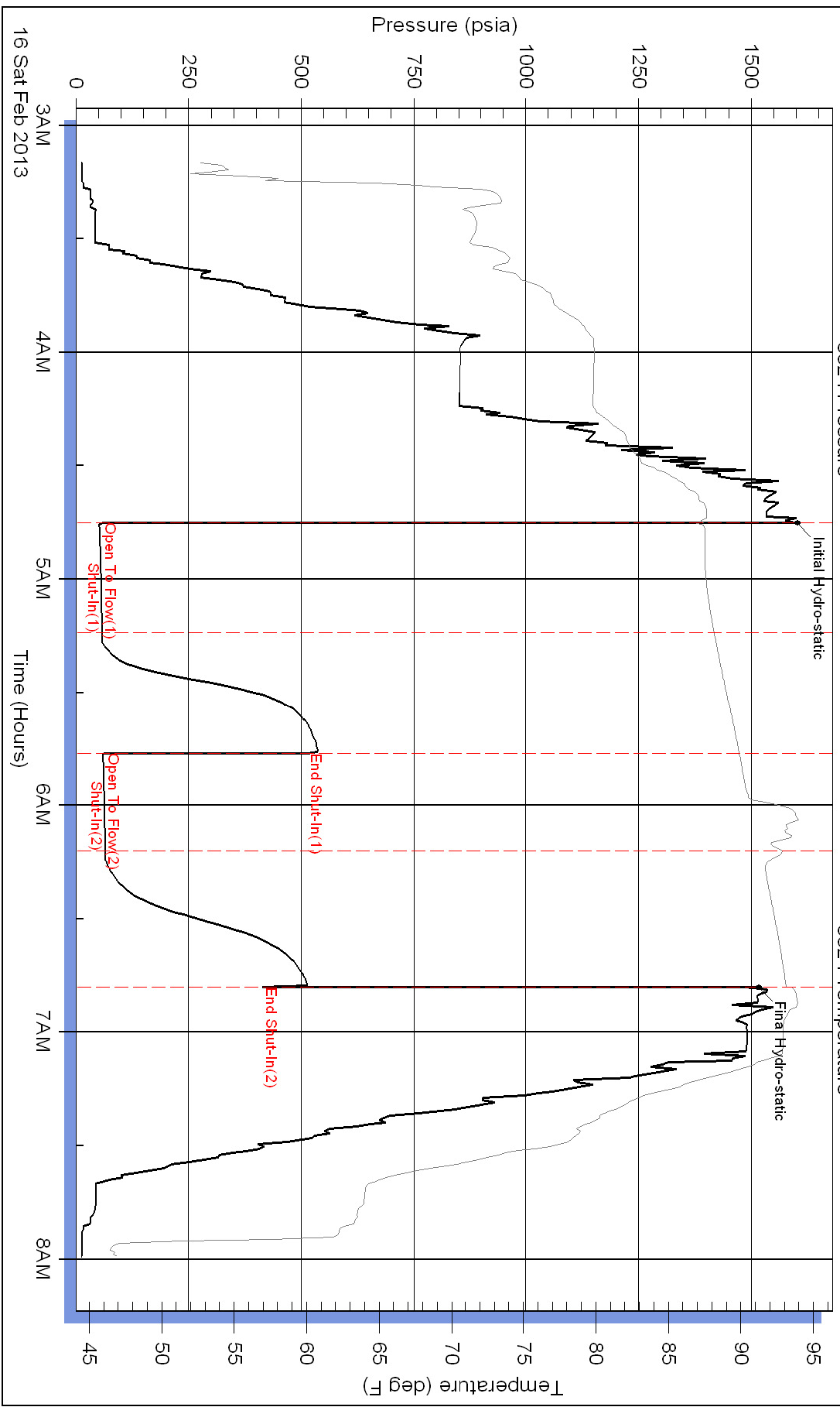
Inside

RJM Coarpany

Prosser #1

DST Test Number: 3

# Pressure vs. Time



Superior Testers Enterprises LLC

Ref. No: 17420

Printed: 2013.02.16 @ 08:19:50