



**TRILOBITE TESTING, INC**

# DRILL STEM TEST REPORT

Cholla Production LLC  
 7851 S. Elatin ST STE 201  
 Littleton CO, 80120  
 ATTN: Bill Goff

**8-11s-22w Trego KS**  
**Patterson 1-8**  
 Job Ticket: 51562 **DST#: 3**  
 Test Start: 2012.12.03 @ 12:16:00

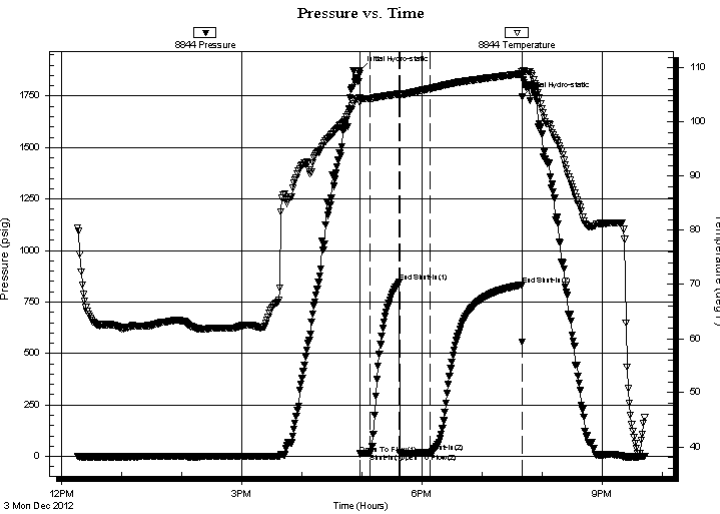
## GENERAL INFORMATION:

Formation: **Marmaton**  
 Deviated: No Whipstock: ft (KB)  
 Time Tool Opened: 16:57:54  
 Time Test Ended: 21:42:04  
 Interval: **3778.00 ft (KB) To 3815.00 ft (KB) (TVD)**  
 Total Depth: 3815.00 ft (KB) (TVD)  
 Hole Diameter: 7.88 inches Hole Condition: Fair  
 Test Type: Conventional Bottom Hole (Reset)  
 Tester: Cody Bloedorn  
 Unit No: 39  
 Reference Elevations: 2203.00 ft (KB)  
 2198.00 ft (CF)  
 KB to GR/CF: 5.00 ft

## Serial #: 8844 Outside

Press @ Run Depth: 17.88 psig @ 3779.00 ft (KB) Capacity: 8000.00 psig  
 Start Date: 2012.12.03 End Date: 2012.12.03 Last Calib.: 2012.12.03  
 Start Time: 12:16:05 End Time: 21:42:05 Time On Btm: 2012.12.03 @ 16:57:50  
 Time Off Btm: 2012.12.03 @ 19:39:30

TEST COMMENT: 10 - IF- 1/4" blow  
 30 - IS- No blow back  
 30 - FF- No blow  
 90 - FS- No blow back



## PRESSURE SUMMARY

Time (Min.)	Pressure (psig)	Temp (deg F)	Annotation
0	1875.05	104.56	Initial Hydro-static
1	12.31	103.55	Open To Flow (1)
10	15.02	104.34	Shut-In(1)
40	845.50	105.22	End Shut-In(1)
40	16.14	104.78	Open To Flow (2)
71	17.88	106.19	Shut-In(2)
162	831.54	108.93	End Shut-In(2)
162	1745.78	109.38	Final Hydro-static

## Recovery

Length (ft)	Description	Volume (bbl)
2.00	HOCM, 40%O, 60%M	0.01
10.00	Mud, w ith oil spots, 100%M	0.05

\* Recovery from multiple tests

## Gas Rates

Choke (inches)	Pressure (psig)	Gas Rate (MMcf/d)



**TRILOBITE**  
TESTING, INC

# DRILL STEM TEST REPORT

**FLUID SUMMARY**

Cholla Production LLC

**8-11s-22w Trego KS**

7851 S. Elatin ST STE 201  
Littleton CO, 80120

**Patterson 1-8**

Job Ticket: 51562

**DST#: 3**

ATTN: Bill Goff

Test Start: 2012.12.03 @ 12:16:00

## Mud and Cushion Information

Mud Type: Gel Chem

Cushion Type:

Oil API:

deg API

Mud Weight: 9.00 lb/gal

Cushion Length:

ft

Water Salinity:

ppm

Viscosity: 48.00 sec/qt

Cushion Volume:

bbbl

Water Loss: 7.99 in<sup>3</sup>

Gas Cushion Type:

Resistivity: ohm.m

Gas Cushion Pressure:

psig

Salinity: 2600.00 ppm

Filter Cake: inches

## Recovery Information

Recovery Table

Length ft	Description	Volume bbl
2.00	HOCM, 40%O, 60%M	0.010
10.00	Mud, w ith oil spots, 100%M	0.049

Total Length: 12.00 ft      Total Volume: 0.059 bbl

Num Fluid Samples: 0

Num Gas Bombs: 0

Serial #:

Laboratory Name:

Laboratory Location:

Recovery Comments:

