



TRILOBITE TESTING, INC

DRILL STEM TEST REPORT

CG Oil Co
PO Box 207
Victoria KS 67671

ATTN: Steve Buskirk

20-16s-13w Barton,KS

BIM Lease #1
Job Ticket: 51573 **DST#: 2**

Test Start: 2013.01.09 @ 16:21:00

GENERAL INFORMATION:

Formation: **Arbuckle**
Deviated: No Whipstock: ft (KB)
Time Tool Opened: 18:10:00
Time Test Ended: 22:24:20

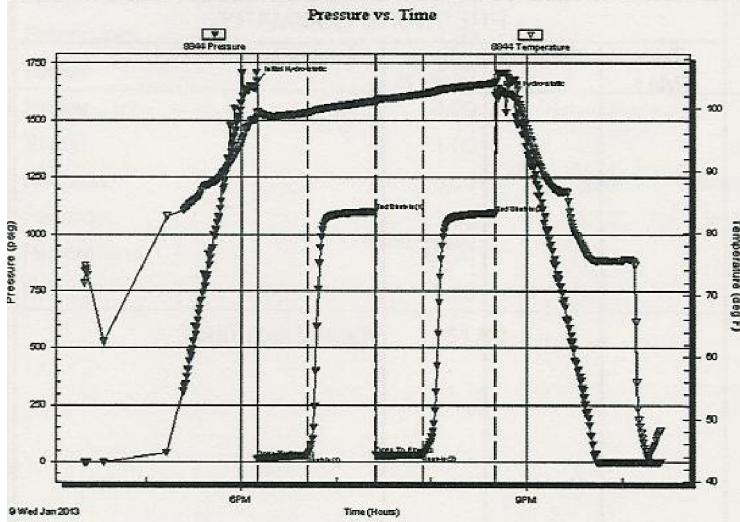
Interval: **3398.00 ft (KB) To 3421.00 ft (KB) (TVD)**
Total Depth: **3421.00 ft (KB) (TVD)**
Hole Diameter: **7.88 inches** Hole Condition: Fair

Test Type: Conventional Bottom Hole (Reset)
Tester: Cody Bloedorn
Unit No: 39

Reference Elevations: 1971.00 ft (KB)
1966.00 ft (CF)
KB to GR/CF: 5.00 ft

Serial #: 8844 **Outside**
Press@RunDepth: 33.24 psig @ 3399.00 ft (KB) Capacity: 8000.00 psig
Start Date: 2013.01.09 End Date: 2013.01.09 Last Calib.: 2013.01.09
Start Time: 16:21:05 End Time: 22:24:20 Time On Btm: 2013.01.09 @ 18:09:50
Time Off Btm: 2013.01.09 @ 20:40:30

TEST COMMENT: 30 - IF- 2" Blow .
45 - IS- No blow back.
30 - FF- 3/4" Blow .
45 - FS- No blow back.



PRESSURE SUMMARY

Time (Min.)	Pressure (psig)	Temp (deg F)	Annotation
0	1671.71	99.40	Initial Hydro-static
1	12.79	98.77	Open To Flow (1)
32	27.44	99.35	Shut-In(1)
75	1099.07	101.20	End Shut-In(1)
75	31.53	100.67	Open To Flow (2)
105	33.24	102.38	Shut-In(2)
151	1093.61	104.12	End Shut-In(2)
151	1609.00	104.40	Final Hydro-static

Recovery

Length (ft)	Description	Volume (bbl)
15.00	SOCM, 10%O, 90%M	0.07
30.00	MO, 10%M, 90%O	0.28

* Recovery from multiple tests

Gas Rates

	Choke (inches)	Pressure (psig)	Gas Rate (MMcft/d)
--	----------------	-----------------	--------------------



**TRILOBITE
TESTING, INC**

DRILL STEM TEST REPORT

CG Oil Co
PO Box 207
Victoria KS 67671
ATTN: Steve Buskirk

20-16s-13w Barton, KS

BIM Lease #1

Job Ticket: 51572

DST#: 1

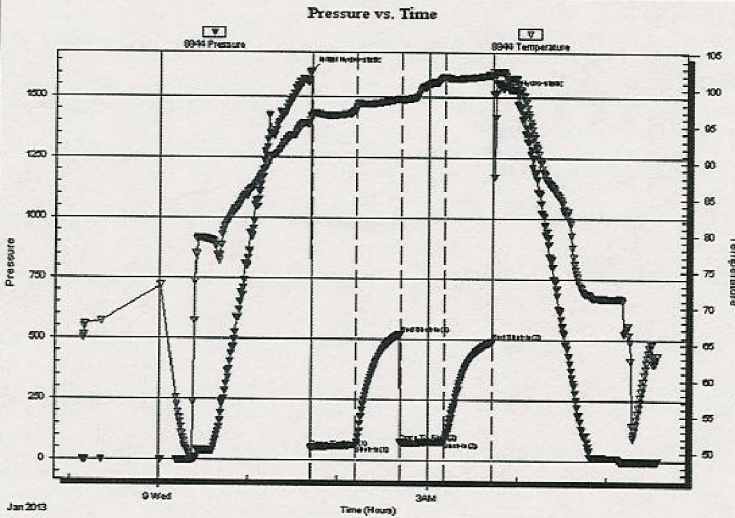
Test Start: 2013.01.08 @ 23:09:00

GENERAL INFORMATION:

Formation: **LKC**
 Deviated: No Whipstock: ft (KB)
 Test Type: Conventional Bottom Hole (Initial)
 Time Tool Opened: 01:42:00
 Tester: Cody Bloedorn
 Time Test Ended: 05:34:09
 Unit No: 39
 Interval: **3209.00 ft (KB) To 3300.00 ft (KB) (TVD)**
 Reference Elevations: 1971.00 ft (KB)
 Total Depth: 3300.00 ft (KB) (TVD)
 1966.00 ft (CF)
 Hole Diameter: 7.88 inches Hole Condition: Fair
 KB to GR/CF: 5.00 ft

Serial #: 8844 Outside
 Press@RunDepth: 78.41 psig @ 3276.00 ft (KB) Capacity: 8000.00 psig
 Start Date: 2013.01.08 End Date: 2013.01.09 Last Calib.: 2013.01.09
 Start Time: 23:09:05 End Time: 05:34:10 Time On Btm: 2013.01.09 @ 01:41:40
 Time Off Btm: 2013.01.09 @ 03:43:30

TEST COMMENT: 30 - IF- 2 1/4" blow.
 30 - IS- No blow back.
 30 - FF- 1/2" blow.
 30 - FSI- No blow back.



PRESSURE SUMMARY

Time (Min.)	Pressure (psig)	Temp (deg F)	Annotation
0	1606.84	96.46	Initial Hydro-static
1	51.30	96.21	Open To Flow (1)
31	64.66	97.69	Shut-In(1)
61	522.63	98.79	End Shut-In(1)
61	77.01	98.54	Open To Flow (2)
90	78.41	101.89	Shut-In(2)
122	490.69	102.11	End Shut-In(2)
122	1513.75	102.50	Final Hydro-static

Recovery

Length (ft)	Description	Volume (bbl)
45.00	Mud with show of oil, 100%M	0.35

Gas Rates

Choke (inches)	Pressure (psig)	Gas Rate (MMcf/d)