



**TRILOBITE
TESTING, INC**

DRILL STEM TEST REPORT

Strata Exploration

10-27S-18W Kiowa

PO Box 401
Fairfield, Il 62837

Cretia Barnes 1-10

ATTN: Jon Christensen

Job Ticket: 49650

DST#: 3

Test Start: 2013.01.14 @ 16:46:06

GENERAL INFORMATION:

Formation: **Kinderhook**

Deviated: No Whipstock: ft (KB)

Time Tool Opened: 20:14:36

Time Test Ended: 01:09:21

Test Type: Conventional Bottom Hole (Reset)

Tester: Leal Cason

Unit No: 45

Interval: 4732.00 ft (KB) To 4780.00 ft (KB) (TVD)

Reference Elevations: 2187.00 ft (KB)

Total Depth: 4780.00 ft (KB) (TVD)

2179.00 ft (CF)

Hole Diameter: 7.88 inches Hole Condition: Good

KB to GR/CF: 8.00 ft

Serial #: 6798

Inside

Press @ Run Depth: 52.15 psig @ 4733.00 ft (KB)

Capacity: 8000.00 psig

Start Date: 2013.01.14

End Date:

2013.01.15

Last Calib.:

2013.01.15

Start Time: 16:46:07

End Time:

01:09:21

Time On Btm:

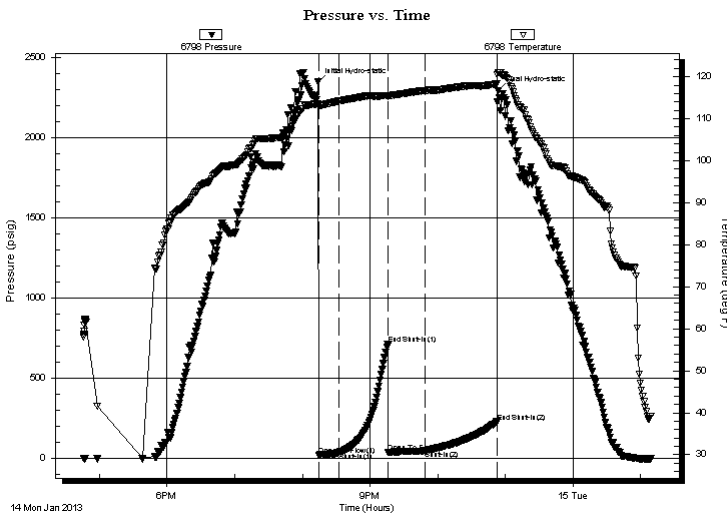
2013.01.14 @ 20:13:51

Time Off Btm:

2013.01.14 @ 22:53:36

TEST COMMENT: IF: Weak 1/4 inch Blow
IS: No Blow Back
FF: Weak 1/4 inch Blow
FS: No Blow Back

PRESSURE SUMMARY



Time (Min.)	Pressure (psig)	Temp (deg F)	Annotation
0	2347.09	113.63	Initial Hydro-static
1	21.89	113.17	Open To Flow (1)
19	39.00	114.21	Shut-In(1)
62	715.60	115.50	End Shut-In(1)
63	40.20	115.38	Open To Flow (2)
96	52.15	116.73	Shut-In(2)
159	229.77	118.31	End Shut-In(2)
160	2294.94	121.03	Final Hydro-static

Recovery

Length (ft)	Description	Volume (bbl)
65.00	Mud	0.32

Gas Rates

	Choke (inches)	Pressure (psig)	Gas Rate (Mcf/d)

* Recovery from multiple tests



**TRILOBITE
TESTING, INC**

DRILL STEM TEST REPORT

FLUID SUMMARY

Strata Exploration

10-27S-18W Kiowa

PO Box 401
Fairfield, Il 62837

Cretia Barnes 1-10

Job Ticket: 49650

DST#: 3

ATTN: Jon Christensen

Test Start: 2013.01.14 @ 16:46:06

Mud and Cushion Information

Mud Type: Gel Chem

Cushion Type:

Oil API:

deg API

Mud Weight: 9.00 lb/gal

Cushion Length:

ft

Water Salinity:

ppm

Viscosity: 82.00 sec/qt

Cushion Volume:

bbbl

Water Loss: 9.59 in³

Gas Cushion Type:

Resistivity: ohm.m

Gas Cushion Pressure:

psig

Salinity: 6000.00 ppm

Filter Cake: 0.02 inches

Recovery Information

Recovery Table

Length ft	Description	Volume bbl
65.00	Mud	0.320

Total Length: 65.00 ft Total Volume: 0.320 bbl

Num Fluid Samples: 0

Num Gas Bombs: 0

Serial #:

Laboratory Name:

Laboratory Location:

Recovery Comments:

Pressure vs. Time

