



TRILOBITE TESTING, INC.

DRILL STEM TEST REPORT

Hutchinson Oil
 Po Box 521
 Derby KS 67037
 ATTN: Steve Hutchinson/ Je

20-22-11 Stafford Co
V&V #1
 Job Ticket: 50929 **DST#: 5**
 Test Start: 2013.01.29 @ 15:53:09

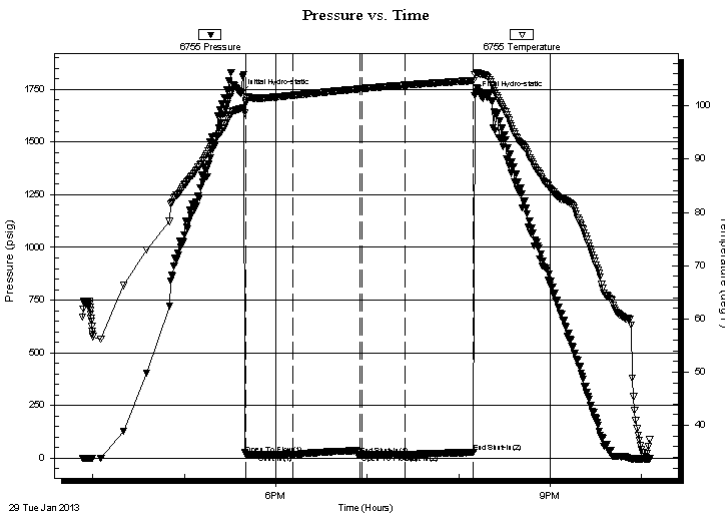
GENERAL INFORMATION:

Formation: **Abuckle**
 Deviated: No Whipstock: ft (KB)
 Time Tool Opened: 17:40:09
 Time Test Ended: 22:05:39
 Interval: **3617.00 ft (KB) To 3627.00 ft (KB) (TVD)**
 Total Depth: 3627.00 ft (KB) (TVD)
 Hole Diameter: 7.88 inches Hole Condition: Fair
 Test Type: Conventional Bottom Hole (Reset)
 Tester: Chris Staats
 Unit No: 47
 Reference Elevations: 1838.00 ft (KB)
 1829.00 ft (CF)
 KB to GR/CF: 9.00 ft

Serial #: 6755 Inside
 Press @ RunDepth: 18.35 psig @ 3618.00 ft (KB) Capacity: 8000.00 psig
 Start Date: 2013.01.29 End Date: 2013.01.29 Last Calib.: 2013.01.29
 Start Time: 15:53:14 End Time: 22:05:38 Time On Btm: 2013.01.29 @ 17:37:09
 Time Off Btm: 2013.01.29 @ 20:10:24

TEST COMMENT: IF: Weak blow 4"
 IS: No blow back
 FF: Weak blow 1"
 FS: No blow back

PRESSURE SUMMARY



| Time (Min.) | Pressure (psig) | Temp (deg F) | Annotation |
|-------------|-----------------|--------------|----------------------|
| 0 | 1731.21 | 99.51 | Initial Hydro-static |
| 3 | 19.27 | 100.52 | Open To Flow (1) |
| 34 | 16.76 | 101.98 | Shut-In(1) |
| 78 | 15.99 | 103.21 | End Shut-In(1) |
| 79 | 16.80 | 103.25 | Open To Flow (2) |
| 108 | 18.35 | 103.90 | Shut-In(2) |
| 153 | 28.17 | 104.77 | End Shut-In(2) |
| 154 | 1721.00 | 105.82 | Final Hydro-static |

Recovery

| Length (ft) | Description | Volume (bbl) |
|-------------|-------------|--------------|
| 5.00 | Gassy Mud | 0.02 |
| | | |
| | | |
| | | |
| | | |

* Recovery from multiple tests

Gas Rates

| Choke (inches) | Pressure (psig) | Gas Rate (Mcf/d) |
|----------------|-----------------|------------------|
| | | |



**TRILOBITE
TESTING, INC.**

DRILL STEM TEST REPORT

FLUID SUMMARY

Hutchinson Oil

20-22-11 Stafford Co

Po Box 521
Derby KS 67037

V&V #1

Job Ticket: 50929

DST#: 5

ATTN: Steve Hutchinson/ Je

Test Start: 2013.01.29 @ 15:53:09

Mud and Cushion Information

Mud Type: Gel Chem

Cushion Type:

Oil API:

deg API

Mud Weight: 9.00 lb/gal

Cushion Length:

ft

Water Salinity:

ppm

Viscosity: 52.00 sec/qt

Cushion Volume:

bbbl

Water Loss: 8.79 in³

Gas Cushion Type:

Resistivity: 0.00 ohm.m

Gas Cushion Pressure:

psig

Salinity: 4000.00 ppm

Filter Cake: 0.02 inches

Recovery Information

Recovery Table

| Length ft | Description | Volume bbl |
|--------------|-------------|---------------|
| 5.00 | Gassy Mud | 0.025 |

Total Length: 5.00 ft Total Volume: 0.025 bbl

Num Fluid Samples: 0

Num Gas Bombs: 0

Serial #:

Laboratory Name:

Laboratory Location:

Recovery Comments:

Serial #: 6755

Inside Hutchinson Oil

V&V #1

DST Test Number: 5

