



**TRILOBITE
TESTING, INC.**

DRILL STEM TEST REPORT

Herman L Loeb LLC

20-27-18

Po Box 838
Lawrenceville IL 62439

Banta F # 1-20

ATTN: Jesse Middagh/ Jim H

Job Ticket: 50936

DST#: 1

Test Start: 2013.02.13 @ 12:21:19

GENERAL INFORMATION:

Formation: **KC I**

Deviated: No Whipstock: ft (KB)

Time Tool Opened: 15:35:49

Time Test Ended: 22:38:19

Test Type: Conventional Bottom Hole (Initial)

Tester: Chris Staats

Unit No: 47

Interval: 4386.00 ft (KB) To 4404.00 ft (KB) (TVD)

Total Depth: 4404.00 ft (KB) (TVD)

Hole Diameter: 7.88 inches Hole Condition: Fair

Reference Elevations: 2199.00 ft (KB)

2186.00 ft (CF)

KB to GR/CF: 13.00 ft

Serial #: 6755

Inside

Press @ Run Depth: 139.45 psig @ 4387.00 ft (KB)

Start Date: 2013.02.13

End Date:

2013.02.13

Start Time: 12:21:24

End Time:

22:38:19

Capacity: 8000.00 psig

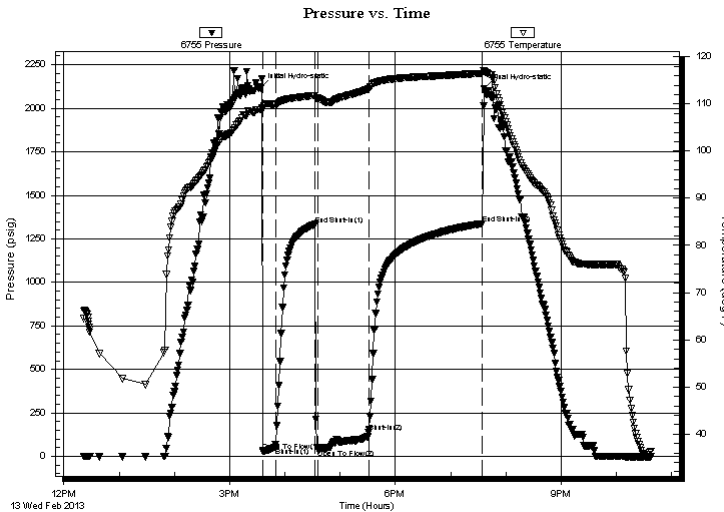
Last Calib.: 2013.02.13

Time On Btm: 2013.02.13 @ 15:33:34

Time Off Btm: 2013.02.13 @ 19:36:34

TEST COMMENT: IF: Strong blow BOB 2 min
ISI No blow back
FF: Strong blow BOB 30 sec GTS 10 min TSTM
FSI: Weak blow back

PRESSURE SUMMARY



Time (Min.)	Pressure (psig)	Temp (deg F)	Annotation
0	2117.02	108.82	Initial Hydro-static
3	30.75	108.88	Open To Flow (1)
16	52.86	109.83	Shut-In(1)
59	1332.99	111.83	End Shut-In(1)
63	40.95	111.23	Open To Flow (2)
118	139.45	113.22	Shut-In(2)
241	1337.93	116.52	End Shut-In(2)
243	2113.10	116.97	Final Hydro-static

Recovery

Length (ft)	Description	Volume (bbl)
0.00	4375' GIP	0.00
150.00	G,M 40%gas 60% mud	0.74
180.00	M,W,G,O 20%gas 20%w ater 20%mud	40.89il

Gas Rates

	Choke (inches)	Pressure (psig)	Gas Rate (Mcf/d)



**TRILOBITE
TESTING, INC.**

DRILL STEM TEST REPORT

FLUID SUMMARY

Herman L Loeb LLC

20-27-18

Po Box 838
Lawrenceville IL 62439

Banta F # 1-20

Job Ticket: 50936

DST#: 1

ATTN: Jesse Middagh/ Jim H

Test Start: 2013.02.13 @ 12:21:19

Mud and Cushion Information

Mud Type: Gel Chem

Cushion Type:

Oil API:

deg API

Mud Weight: 9.00 lb/gal

Cushion Length:

ft

Water Salinity:

80000 ppm

Viscosity: 62.00 sec/qt

Cushion Volume:

bbbl

Water Loss: 8.99 in³

Gas Cushion Type:

Resistivity: 0.00 ohm.m

Gas Cushion Pressure:

psig

Salinity: 5000.00 ppm

Filter Cake: 0.02 inches

Recovery Information

Recovery Table

Length ft	Description	Volume bbbl
0.00	4375' GIP	0.000
150.00	G,M 40%gas 60% mud	0.738
180.00	M,W,G,O 20%gas 20%water 20%mud 40%c	0.885

Total Length: 330.00 ft

Total Volume: 1.623 bbl

Num Fluid Samples: 0

Num Gas Bombs: 0

Serial #:

Laboratory Name:

Laboratory Location:

Recovery Comments:

Serial #: 6755

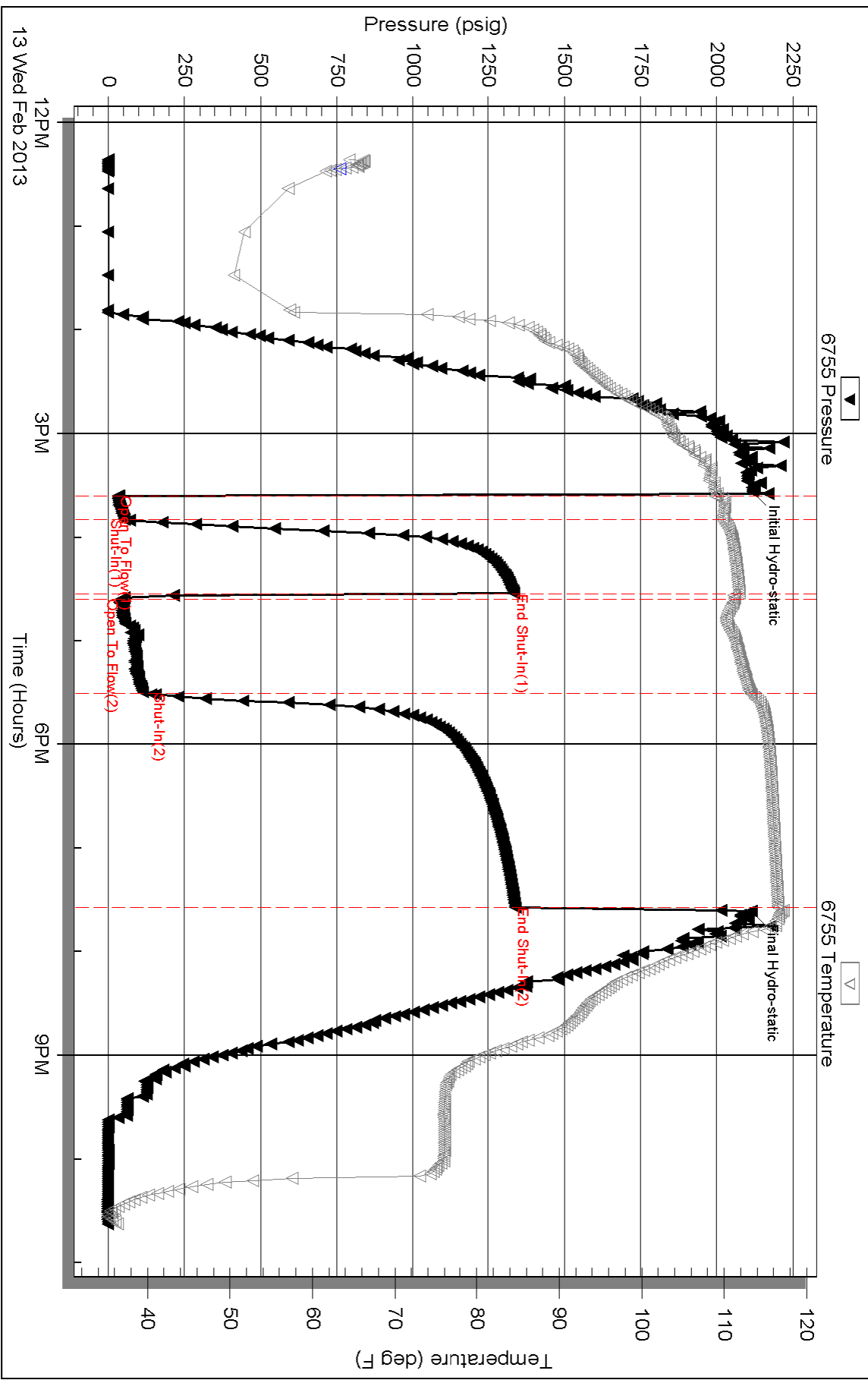
Inside

Herrman L Loeb LLC

Barita F# 1-20

DST Test Number: 1

Pressure vs. Time



Triobite Testing, Inc

Ref. No: 50936

Printed: 2013.02.14 @ 07:21:59