



DRILL STEM TEST REPORT

Prepared For: **RJM Company**

Po Box 256 Claflin Kansas
67525

ATTN: Jim Muscrow

Doll#3

27-18s-11w-Barton

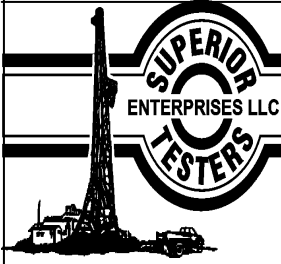
Start Date: 2013.03.08 @ 09:35:00

End Date: 2013.03.08 @ 15:19:30

Job Ticket #: 17426 DST #: 1

Superior Testers Enterprises LLC
PO Box 138 Great Bend KS 67530
1-800-792-6902

Printed: 2013.03.09 @ 03:42:52



DRILL STEM TEST REPORT

RJM Company
 Po Box 256 Claflin Kansas
 67525
 ATTN: Jim Muscrow

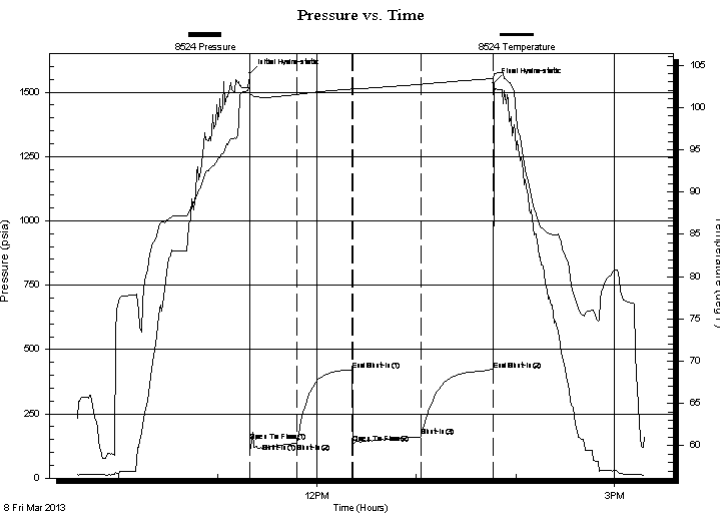
27-18s-11w-Barton
Doll#3
 Job Ticket: 17426 **DST#: 1**
 Test Start: 2013.03.08 @ 09:35:00

GENERAL INFORMATION:

Formation: **Lansing A-F**
 Deviated: No Whipstock: ft (KB)
 Time Tool Opened: 11:20:30
 Time Test Ended: 15:19:30
 Test Type: Conventional (Initial)
 Tester: Dustin Ellis
 Unit No: 3315-Great Bend- 49
 Interval: **3044.00 ft (KB) To 3142.00 ft (KB) (TVD)**
 Reference Elevations: 1784.00 ft (KB)
 Total Depth: 3142.00 ft (KB) (TVD) 1775.00 ft (CF)
 Hole Diameter: 7.88 inches Hole Condition: Fair KB to GR/CF: 9.00 ft

Serial #: 8524 Inside
 Press@RunDepth: 418.66 psia @ 3138.30 ft (KB) Capacity: 5000.00 psia
 Start Date: 2013.03.08 End Date: 2013.03.08 Last Calib.: 2013.03.09
 Start Time: 09:35:00 End Time: 15:18:39 Time On Btm: 2013.03.08 @ 11:19:23
 Time Off Btm: 2013.03.08 @ 13:46:43

TEST COMMENT: 1st Open 30 minutes Strong blow blew bottom bucket 2.5 minutes.
 1st Shut in 30 minutes Yes Blow back.
 2nd Open 45 minutes Strong blow blew bottom bucket instantly.
 2nd Shut in 45 minutes Yes blow back



PRESSURE SUMMARY

Time (Min.)	Pressure (psia)	Temp (deg F)	Annotation
0	1573.79	102.02	Initial Hydro-static
1	143.39	101.33	Open To Flow (1)
29	136.35	101.54	Shut-In(1)
29	136.74	101.55	Shut-In(2)
62	419.61	102.18	End Shut-In(1)
62	133.74	102.16	Open To Flow (2)
104	161.78	102.74	Shut-In(3)
148	418.66	103.42	End Shut-In(2)
148	1537.06	104.00	Final Hydro-static

Recovery

Length (ft)	Description	Volume (bbl)
30.00	Mud 100%	0.42
60.00	Oil spotted mud 1%oil 99%mud	0.84
60.00	Gassy oil cut mud	0.84
0.00	45%gas 5%oil 50%mud	0.00
60.00	Gassy oil cut mud	0.84
0.00	35%gas 10%oil 55%mud	0.00

Gas Rates

Choke (inches)	Pressure (psia)	Gas Rate (Mcf/d)



DRILL STEM TEST REPORT

TOOL DIAGRAM

RJM Company
 Po Box 256 Claflin Kansas
 67525
 A T T N : Jim Muscrow

27-18s-11w-Barton
Doll#3
 Job Ticket: 17426 **DST#: 1**
 Test Start: 2013.03.08 @ 09:35:00

Tool Information

Drill Pipe:	Length: 3054.00 ft	Diameter: 3.80 inches	Volume: 42.84 bbl	Tool Weight: 2000.00 lb
Heavy Wt. Pipe:	Length: 0.00 ft	Diameter: 0.00 inches	Volume: 0.00 bbl	Weight set on Packer: 20000.00 lb
Drill Collar:	Length: 0.00 ft	Diameter: 0.00 inches	Volume: 0.00 bbl	Weight to Pull Loose: 52000.00 lb
			<u>Total Volume: 42.84 bbl</u>	Tool Chased 0.00 ft
Drill Pipe Above KB:	30.00 ft			String Weight: Initial 34000.00 lb
Depth to Top Packer:	3044.00 ft			Final 35000.00 lb
Depth to Bottom Packer:	ft			
Interval between Packers:	98.30 ft			
Tool Length:	118.30 ft			
Number of Packers:	2	Diameter: 6.75 inches		

Tool Comments:

Tool Description	Length (ft)	Serial No.	Position	Depth (ft)	Accum. Lengths
-------------------------	--------------------	-------------------	-----------------	-------------------	-----------------------

Shut-In Tool	5.00			3029.00	
Hydraulic Tool	5.00			3034.00	
Packer	5.00			3039.00	20.00 Bottom Of Top Packer
Packer	5.00			3044.00	
Anchor	5.00			3049.00	
Change Over Sub	0.75			3049.75	
Drill Pipe	62.80			3112.55	
Change Over Sub	0.75			3113.30	
Anchor	24.00			3137.30	
Recorder	1.00	8524	Inside	3138.30	
Recorder	1.00	6839	Outside	3139.30	
Bullnose	3.00			3142.30	98.30 Bottom Packers & Anchor

Total Tool Length: 118.30



DRILL STEM TEST REPORT

FLUID SUMMARY

RJM Company

27-18s-11w-Barton

Po Box 256 Claflin Kansas
67525

Doll#3

Job Ticket: 17426

DST#: 1

ATTN: Jim Muscrow

Test Start: 2013.03.08 @ 09:35:00

Mud and Cushion Information

Mud Type: Gel Chem

Cushion Type:

Oil API:

deg API

Mud Weight: 9.00 lb/gal

Cushion Length:

ft

Water Salinity:

ppm

Viscosity: 50.00 sec/qt

Cushion Volume:

bbbl

Water Loss: 7.20 in³

Gas Cushion Type:

Resistivity: ohm.m

Gas Cushion Pressure:

psia

Salinity: 2000.00 ppm

Filter Cake: 1.00 inches

Recovery Information

Recovery Table

Length ft	Description	Volume bbl
30.00	Mud 100%	0.421
60.00	Oil spotted mud 1%oil 99%mud	0.842
60.00	Gassy oil cut mud	0.842
0.00	45%gas 5%oil 50%mud	0.000
60.00	Gassy oil cut mud	0.842
0.00	35%gas 10%oil 55%mud	0.000

Total Length: 210.00 ft Total Volume: 2.947 bbl

Num Fluid Samples: 0

Num Gas Bombs: 0

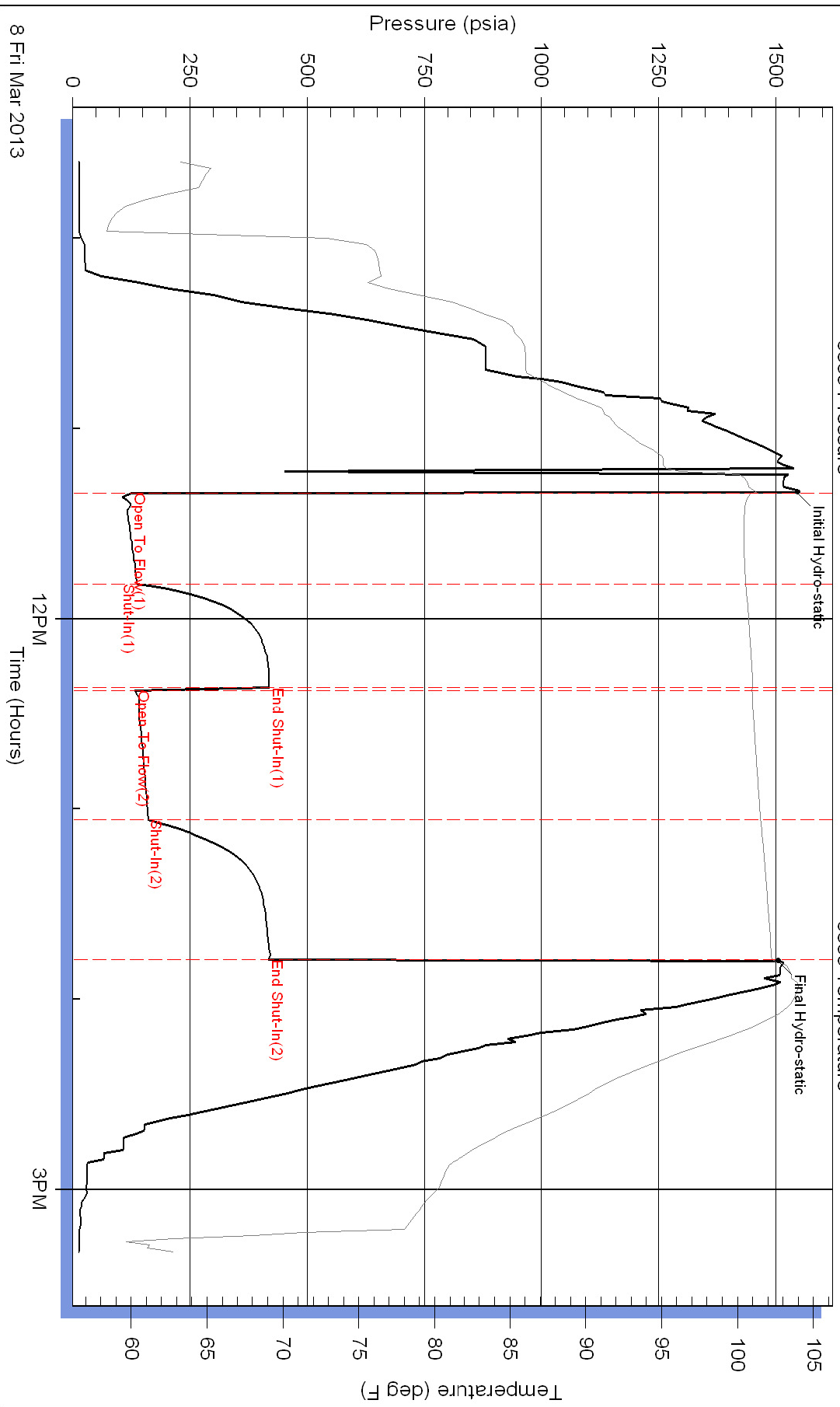
Serial #:

Laboratory Name:

Laboratory Location:

Recovery Comments:

Pressure vs. Time



Serial #: 8524

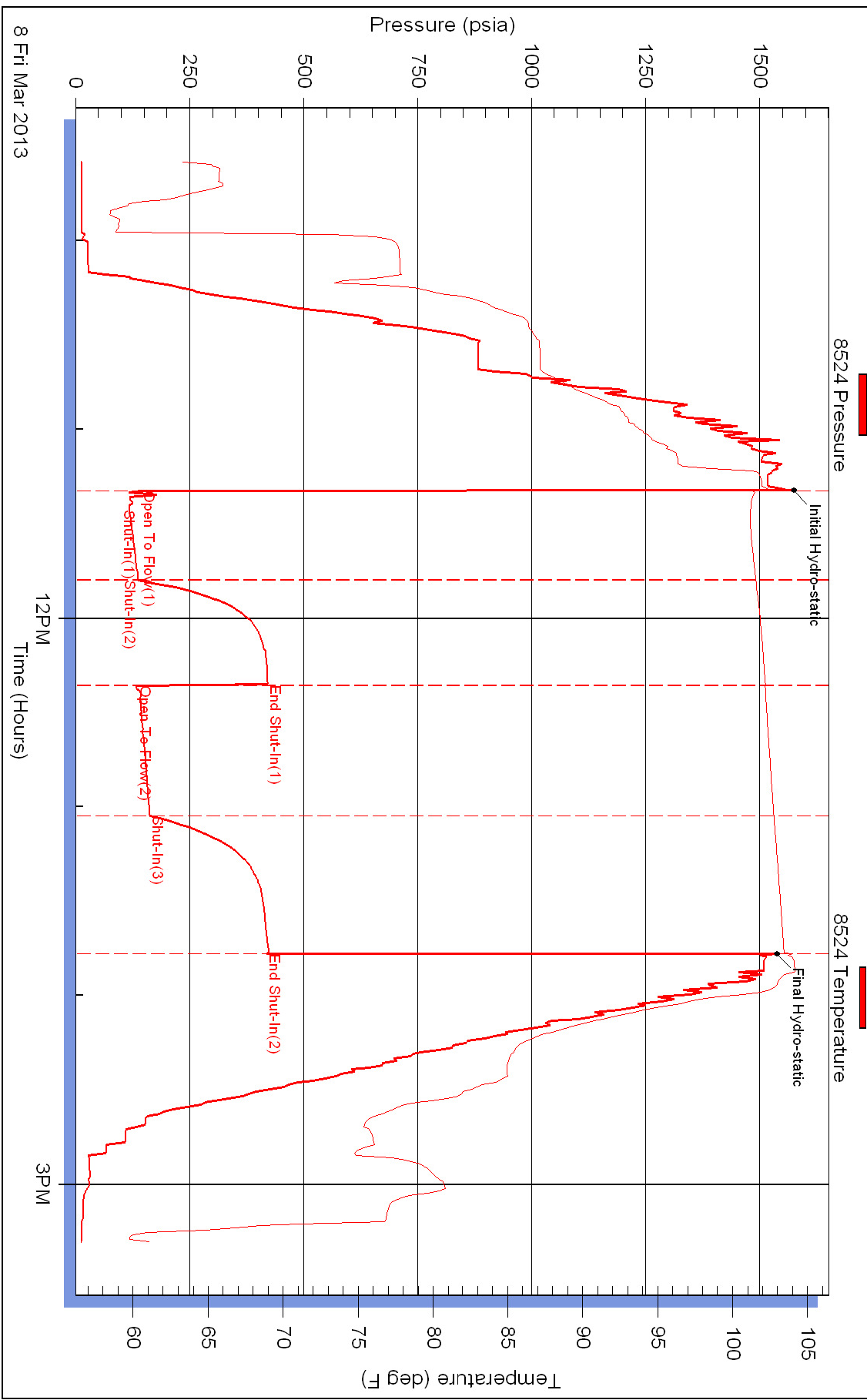
Inside

RJM Company

Doll#3

DST Test Number: 1

Pressure vs. Time



Superior Testers Enterprises LLC

Ref. No: 17426

Printed: 2013.03.09 @ 03:42:53