



**TRILOBITE  
TESTING, INC.**

# DRILL STEM TEST REPORT

Herman L Loeb  
PO Box 838  
Lawrenceville, IL 62439  
ATTN: Jon Christensen

**18-27S-8W Kiowa**  
**Blessed Acres 1-18**  
Job Ticket: 50889      **DST#: 2**  
Test Start: 2013.02.13 @ 10:36:28

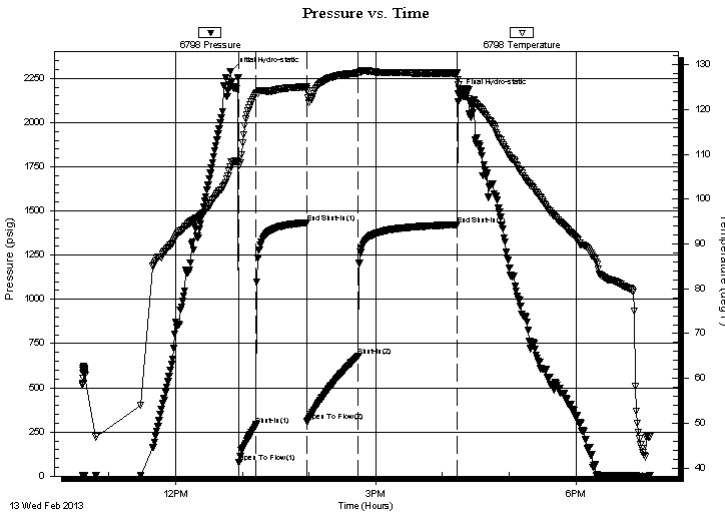
## GENERAL INFORMATION:

Formation: **Swope/Hertha**  
Deviated: No Whipstock:                      ft (KB)      Test Type: Conventional Bottom Hole (Reset)  
Time Tool Opened: 12:57:13      Tester: Leal Cason  
Time Test Ended: 19:06:28      Unit No: 45  
**Interval: 4512.00 ft (KB) To 4558.00 ft (KB) (TVD)**      Reference Elevations: 2206.00 ft (KB)  
Total Depth: 4558.00 ft (KB) (TVD)      2196.00 ft (CF)  
Hole Diameter: 7.88 inches Hole Condition: Good      KB to GR/CF: 10.00 ft

**Serial #: 6798      Inside**  
Press @ Run Depth: 680.05 psig @ 4513.00 ft (KB)      Capacity: 8000.00 psig  
Start Date: 2013.02.13      End Date: 2013.02.13      Last Calib.: 2013.02.13  
Start Time: 10:36:29      End Time: 19:06:28      Time On Btm: 2013.02.13 @ 12:49:13  
Time Off Btm: 2013.02.13 @ 16:14:28

**TEST COMMENT:** IF: Strong Blow , BOB in 3 minutes  
IS: Weak Surface Blow Back  
FF: Strong Blow , BOB in 4 minutes  
FS: 1/4 inch Blow Back

## PRESSURE SUMMARY



Time (Min.)	Pressure (psig)	Temp (deg F)	Annotation
0	2289.86	107.22	Initial Hydro-static
8	78.56	107.56	Open To Flow (1)
24	289.98	123.44	Shut-In(1)
69	1433.88	125.08	End Shut-In(1)
70	308.38	124.06	Open To Flow (2)
115	680.05	128.08	Shut-In(2)
205	1422.43	128.08	End Shut-In(2)
206	2161.27	125.50	Final Hydro-static

## Recovery

Length (ft)	Description	Volume (bbl)
0.00	GIP 248	0.00
1197.00	Water	14.83
126.00	MCW 24%M 76%W	1.77
83.00	OMCW 10%O 40%M 50%W	1.16
5.00	Oil	0.07

\* Recovery from multiple tests

## Gas Rates

Choke (inches)	Pressure (psig)	Gas Rate (Mcf/d)



**TRILOBITE  
TESTING, INC.**

# DRILL STEM TEST REPORT

## FLUID SUMMARY

Herman L Loeb  
PO Box 838  
Lawrenceville, IL 62439  
ATTN: Jon Christensen

**18-27S-8W Kiowa**  
**Blessed Acres 1-18**  
Job Ticket: 50889      **DST#: 2**  
Test Start: 2013.02.13 @ 10:36:28

### Mud and Cushion Information

Mud Type: Gel Chem	Cushion Type:	Oil API:	deg API
Mud Weight: 9.00 lb/gal	Cushion Length: ft	Water Salinity:	45000 ppm
Viscosity: 54.00 sec/qt	Cushion Volume: bbl		
Water Loss: 8.99 in <sup>3</sup>	Gas Cushion Type:		
Resistivity: ohm.m	Gas Cushion Pressure: psig		
Salinity: 5000.00 ppm			
Filter Cake: 0.02 inches			

### Recovery Information

Recovery Table

Length ft	Description	Volume bbl
0.00	GIP 248	0.000
1197.00	Water	14.832
126.00	MCW 24%M 76%W	1.767
83.00	OMCW 10%O 40%M 50%W	1.164
5.00	Oil	0.070

Total Length: 1411.00 ft      Total Volume: 17.833 bbl

Num Fluid Samples: 0      Num Gas Bombs: 0      Serial #:

Laboratory Name:      Laboratory Location:

Recovery Comments: RW w as .23 @ 50 degrees

