



TRILOBITE TESTING, INC.

DRILL STEM TEST REPORT

Herman L Loeb LLC

21-27-18

Po Box 838
Lawrenceville IL 62439

Banta F T #1-21

Job Ticket: 50940

DST#: 1

ATTN: Jesse Middagh/ Tom P

Test Start: 2013.03.04 @ 15:22:46

GENERAL INFORMATION:

Formation: **Mississippi**

Deviated: No Whipstock: ft (KB)

Time Tool Opened: 20:30:46

Time Test Ended: 02:28:46

Test Type: Conventional Bottom Hole (Initial)

Tester: Chris Staats

Unit No: 47

Interval: 4748.00 ft (KB) To 4831.00 ft (KB) (TVD)

Reference Elevations: 2201.00 ft (KB)

Total Depth: 4831.00 ft (KB) (TVD)

2188.00 ft (CF)

Hole Diameter: 7.88 inches Hole Condition: Fair

KB to GR/CF: 13.00 ft

Serial #: 6755

Inside

Press @ Run Depth: 203.87 psig @ 4749.00 ft (KB)

Capacity: 8000.00 psig

Start Date: 2013.03.04

End Date:

2013.03.05

Last Calib.: 2013.03.05

Start Time: 15:22:51

End Time:

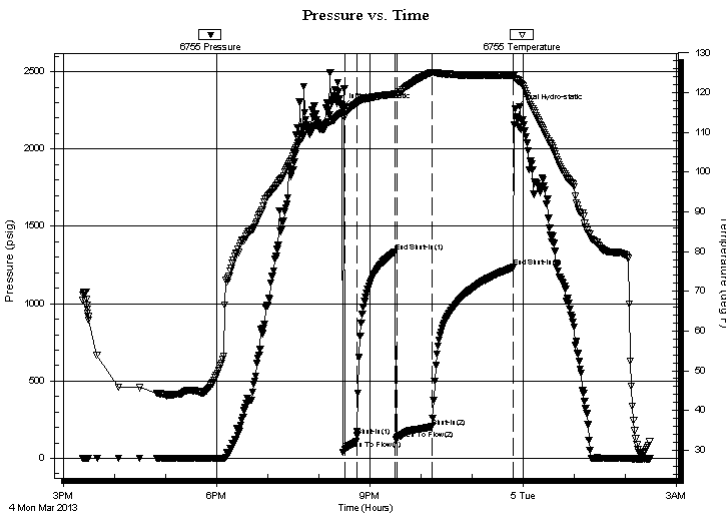
02:28:46

Time On Btm: 2013.03.04 @ 20:27:46

Time Off Btm: 2013.03.04 @ 23:51:16

TEST COMMENT: IF: Fair blow 5"
IS: No blow back
FF: Fair blow 7"
FS: No blow back

PRESSURE SUMMARY



Time (Min.)	Pressure (psig)	Temp (deg F)	Annotation
0	2270.15	114.92	Initial Hydro-static
3	55.91	114.08	Open To Flow (1)
17	145.75	117.35	Shut-In(1)
62	1335.51	119.66	End Shut-In(1)
64	125.53	119.62	Open To Flow (2)
106	203.87	125.11	Shut-In(2)
201	1235.22	124.39	End Shut-In(2)
204	2260.46	123.55	Final Hydro-static

Recovery

Length (ft)	Description	Volume (bbl)
30.00	mud 100%	0.15
30.00	W,M 20% water 80% mud	0.15
315.00	M,W 10% mud 90% water	1.98

Gas Rates

	Choke (inches)	Pressure (psig)	Gas Rate (Mcf/d)



**TRILOBITE
TESTING, INC.**

DRILL STEM TEST REPORT

FLUID SUMMARY

Herman L Loeb LLC

21-27-18

Po Box 838
Lawrenceville IL 62439

Banta F T #1-21

Job Ticket: 50940

DST#: 1

ATTN: Jesse Middagh/ Tom P

Test Start: 2013.03.04 @ 15:22:46

Mud and Cushion Information

Mud Type: Gel Chem

Cushion Type:

Oil API:

deg API

Mud Weight: 9.00 lb/gal

Cushion Length:

ft

Water Salinity: 125000 ppm

Viscosity: 50.00 sec/qt

Cushion Volume:

bbbl

Water Loss: 7.99 in³

Gas Cushion Type:

Resistivity: 0.00 ohm.m

Gas Cushion Pressure:

psig

Salinity: 6000.00 ppm

Filter Cake: 0.02 inches

Recovery Information

Recovery Table

Length ft	Description	Volume bbbl
30.00	mud 100%	0.148
30.00	W,M 20%w ater 80% mud	0.148
315.00	M,W 10% mud 90% w ater	1.977

Total Length: 375.00 ft

Total Volume: 2.273 bbl

Num Fluid Samples: 0

Num Gas Bombs: 0

Serial #:

Laboratory Name:

Laboratory Location:

Recovery Comments:

Serial #: 6755

Inside

Herrman L Loeb LLC

Barta FT#1-21

DST Test Number: 1

