



## DRILL STEM TEST REPORT

Prepared For: **Hartman Oil Co. Inc**

10500 E Berkeley Sq  
PKWY Ste 100  
Wichita KS 67206

ATTN: Kitt Noah

**Wilkinson #2-22**

**22-17s-34w Scott,KS**

Start Date: 2013.03.18 @ 07:38:00

End Date: 2013.03.18 @ 16:35:25

Job Ticket #: 49793                      DST #: 1

Trilobite Testing, Inc  
PO Box 362 Hays, KS 67601  
ph: 785-625-4778 fax: 785-625-5620

Printed: 2013.03.22 @ 10:16:17



**TRILOBITE TESTING, INC.**

# DRILL STEM TEST REPORT

Hartman Oil Co. Inc  
 10500 E Berkeley Sq  
 PKWY Ste 100  
 Wichita KS 67206  
 ATTN: Kitt Noah

**22-17s-34w Scott,KS**

**Wilkinson #2-22**

Job Ticket: 49793

**DST#: 1**

Test Start: 2013.03.18 @ 07:38:00

## GENERAL INFORMATION:

Formation: **Marmanton " B - C "**

Deviated: No Whipstock: ft (KB)

Time Tool Opened: 09:47:10

Time Test Ended: 16:35:25

Test Type: Conventional Bottom Hole (Initial)

Tester: Will MacLean

Unit No: 58

**Interval: 4501.00 ft (KB) To 4555.00 ft (KB) (TVD)**

Reference Elevations: 3119.00 ft (KB)

Total Depth: 4555.00 ft (KB) (TVD)

3110.00 ft (CF)

Hole Diameter: 7.88 inches Hole Condition: Good

KB to GR/CF: 9.00 ft

**Serial #: 8674 Inside**

Press @ Run Depth: 577.09 psig @ 4502.00 ft (KB)

Capacity: 8000.00 psig

Start Date: 2013.03.18

End Date: 2013.03.18

Last Calib.: 2013.03.18

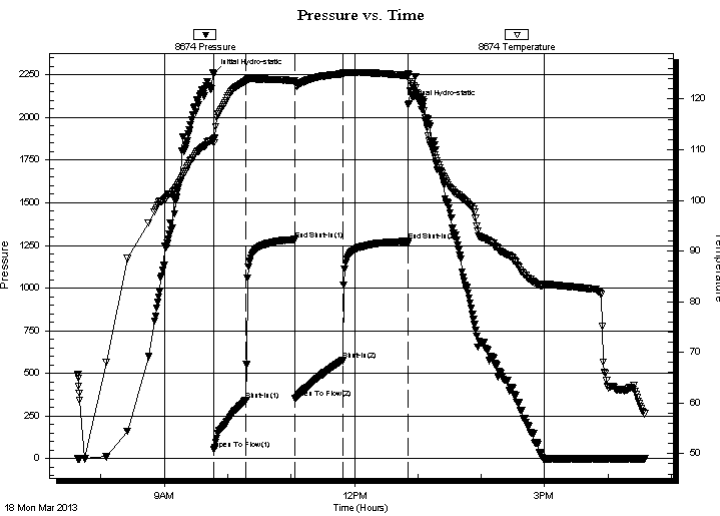
Start Time: 07:38:00

End Time: 16:35:25

Time On Btm: 2013.03.18 @ 09:46:55

Time Off Btm: 2013.03.18 @ 12:50:54

**TEST COMMENT:** IF- Surface Blow Built to BOB in 4 1/4 min  
 IS- Weak Surface Blow in 3 min Built to 4 1/2"  
 FF- Surface Blow Built to BOB in 5 1/2 min  
 FS- Weak Surface Blow in 1 min Built to 1" died back to 1/4"



## PRESSURE SUMMARY

Time (Min.)	Pressure (psig)	Temp (deg F)	Annotation
0	2258.31	112.06	Initial Hydro-static
1	54.89	111.40	Open To Flow (1)
31	343.04	123.54	Shut-In(1)
77	1285.23	123.62	End Shut-In(1)
77	351.61	123.22	Open To Flow (2)
123	577.09	124.96	Shut-In(2)
184	1274.16	124.61	End Shut-In(2)
184	2074.75	125.02	Final Hydro-static

## Recovery

Length (ft)	Description	Volume (bbl)
373.00	MWGCO 8%m 15%w 30%g 47%oil	2.41
315.00	MWGCO 3%m 4%w 15%g 78%oil	4.42
441.00	MGCO 8%m 19%g 73%oil	6.19
189.00	MGCO 12%m 38%g 50%oil	2.65
108.00	GMCO 8%g 23%m 69%oil	1.51
0.00	378' of GIP	0.00

## Gas Rates

Choke (inches)	Pressure (psig)	Gas Rate (Mcf/d)



**TRILOBITE TESTING, INC.**

# DRILL STEM TEST REPORT

Hartman Oil Co. Inc  
 10500 E Berkeley Sq  
 PKWY Ste 100  
 Wichita KS 67206  
 ATTN: Kitt Noah

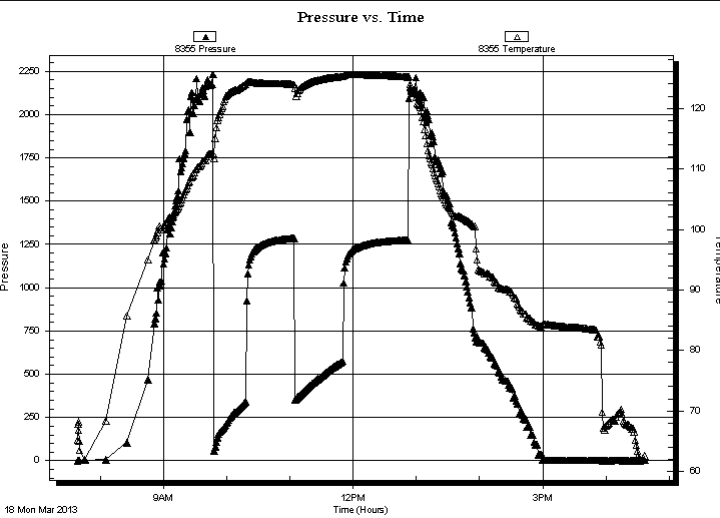
**22-17s-34w Scott,KS**  
**Wilkinson #2-22**  
 Job Ticket: 49793      **DST#: 1**  
 Test Start: 2013.03.18 @ 07:38:00

**GENERAL INFORMATION:**

Formation: **Marmanton " B - C "**  
 Deviated: No Whipstock: ft (KB)      Test Type: Conventional Bottom Hole (Initial)  
 Time Tool Opened: 09:47:10      Tester: Will MacLean  
 Time Test Ended: 16:35:25      Unit No: 58  
 Interval: **4501.00 ft (KB) To 4555.00 ft (KB) (TVD)**      Reference Elevations: 3119.00 ft (KB)  
 Total Depth: 4555.00 ft (KB) (TVD)      3110.00 ft (CF)  
 Hole Diameter: 7.88 inches Hole Condition: Good      KB to GR/CF: 9.00 ft

**Serial #: 8355      Outside**  
 Press @ RunDepth: psig @ 4502.00 ft (KB)      Capacity: 8000.00 psig  
 Start Date: 2013.03.18      End Date: 2013.03.18      Last Calib.: 2013.03.18  
 Start Time: 07:38:05      End Time: 16:37:15      Time On Btm:  
                                                                                                                                          Time Off Btm:

**TEST COMMENT:** IF- Surface Blow Built to BOB in 4 1/4 min  
 IS- Weak Surface Blow in 3 min Built to 4 1/2"  
 FF- Surface Blow Built to BOB in 5 1/2 min  
 FS- Weak Surface Blow in 1 min Built to 1" died back to 1/4"



PRESSURE SUMMARY			
Time (Min.)	Pressure (psig)	Temp (deg F)	Annotation

Recovery		
Length (ft)	Description	Volume (bbl)
373.00	MWGCO 8%m 15%w 30%g 47%oil	2.41
315.00	MWGCO 3%m 4%w 15%g 78%oil	4.42
441.00	MGCO 8%m 19%g 73%oil	6.19
189.00	MGCO 12%m 38%g 50%oil	2.65
108.00	GMCO 8%g 23%m 69%oil	1.51
0.00	378' of GIP	0.00

Gas Rates			
	Choke (inches)	Pressure (psig)	Gas Rate (Mcf/d)



**TRILOBITE  
TESTING, INC.**

# DRILL STEM TEST REPORT

**TOOL DIAGRAM**

Hartman Oil Co. Inc

**22-17s-34w Scott,KS**

10500 E Berkeley Sq  
PKWY Ste 100  
Wichita KS 67206  
ATTN: Kitt Noah

**Wilkinson #2-22**

Job Ticket: 49793

**DST#: 1**

Test Start: 2013.03.18 @ 07:38:00

## Tool Information

Drill Pipe:	Length: 4175.00 ft	Diameter: 3.80 inches	Volume: 58.56 bbl	Tool Weight:	2000.00 lb
Heavy Wt. Pipe:	Length: 0.00 ft	Diameter: 0.00 inches	Volume: 0.00 bbl	Weight set on Packer:	26000.00 lb
Drill Collar:	Length: 310.00 ft	Diameter: 2.25 inches	Volume: 1.52 bbl	Weight to Pull Loose:	4000.00 lb
			<u>Total Volume: 60.08 bbl</u>	Tool Chased	ft
Drill Pipe Above KB:	12.00 ft			String Weight: Initial	60000.00 lb
Depth to Top Packer:	4501.00 ft			Final	64000.00 lb
Depth to Bottom Packer:	ft				
Interval between Packers:	54.00 ft				
Tool Length:	82.00 ft				
Number of Packers:	2	Diameter:	6.75 inches		
Tool Comments:					

## Tool Description

Tool Description	Length (ft)	Serial No.	Position	Depth (ft)	Accum. Lengths
Change Over Sub	1.00			4474.00	
Shut In Tool	5.00			4479.00	
Hydraulic tool	5.00			4484.00	
Jars	5.00			4489.00	
Safety Joint	3.00			4492.00	
Packer	5.00			4497.00	28.00 Bottom Of Top Packer
Packer	4.00			4501.00	
Stubb	1.00			4502.00	
Recorder	0.00	8355	Outside	4502.00	
Recorder	0.00	8674	Inside	4502.00	
Perforations	17.00			4519.00	
Change Over Sub	1.00			4520.00	
Drill Pipe	31.00			4551.00	
Change Over Sub	1.00			4552.00	
Bullnose	3.00			4555.00	54.00 Bottom Packers & Anchor

**Total Tool Length: 82.00**



**TRILOBITE  
TESTING, INC.**

# DRILL STEM TEST REPORT

**FLUID SUMMARY**

Hartman Oil Co. Inc

**22-17s-34w Scott,KS**

10500 E Berkeley Sq  
PKWY Ste 100  
Wichita KS 67206  
ATTN: Kitt Noah

**Wilkinson #2-22**

Job Ticket: 49793

**DST#: 1**

Test Start: 2013.03.18 @ 07:38:00

## Mud and Cushion Information

Mud Type: Gel Chem

Cushion Type:

Oil API:

28 deg API

Mud Weight: 9.00 lb/gal

Cushion Length:

ft

Water Salinity:

38000 ppm

Viscosity: 52.00 sec/qt

Cushion Volume:

bbbl

Water Loss: 7.18 in<sup>3</sup>

Gas Cushion Type:

Resistivity: ohm.m

Gas Cushion Pressure:

psig

Salinity: 11000.00 ppm

Filter Cake: 1.00 inches

## Recovery Information

Recovery Table

Length ft	Description	Volume bbl
373.00	MWGCO 8%m 15%w 30%g 47%oil	2.408
315.00	MWGCO 3%m 4%w 15%g 78%oil	4.419
441.00	MGCO 8%m 19%g 73%oil	6.186
189.00	MGCO 12%m 38%g 50%oil	2.651
108.00	GMCO 8%g 23%m 69%oil	1.515
0.00	378' of GIP	0.000

Total Length: 1426.00 ft      Total Volume: 17.179 bbl

Num Fluid Samples: 0

Num Gas Bombs: 0

Serial #:

Laboratory Name:

Laboratory Location:

Recovery Comments: API is 29 @ 70f = 28

RW is .206 @ 65f = 38000

Serial #: 8674

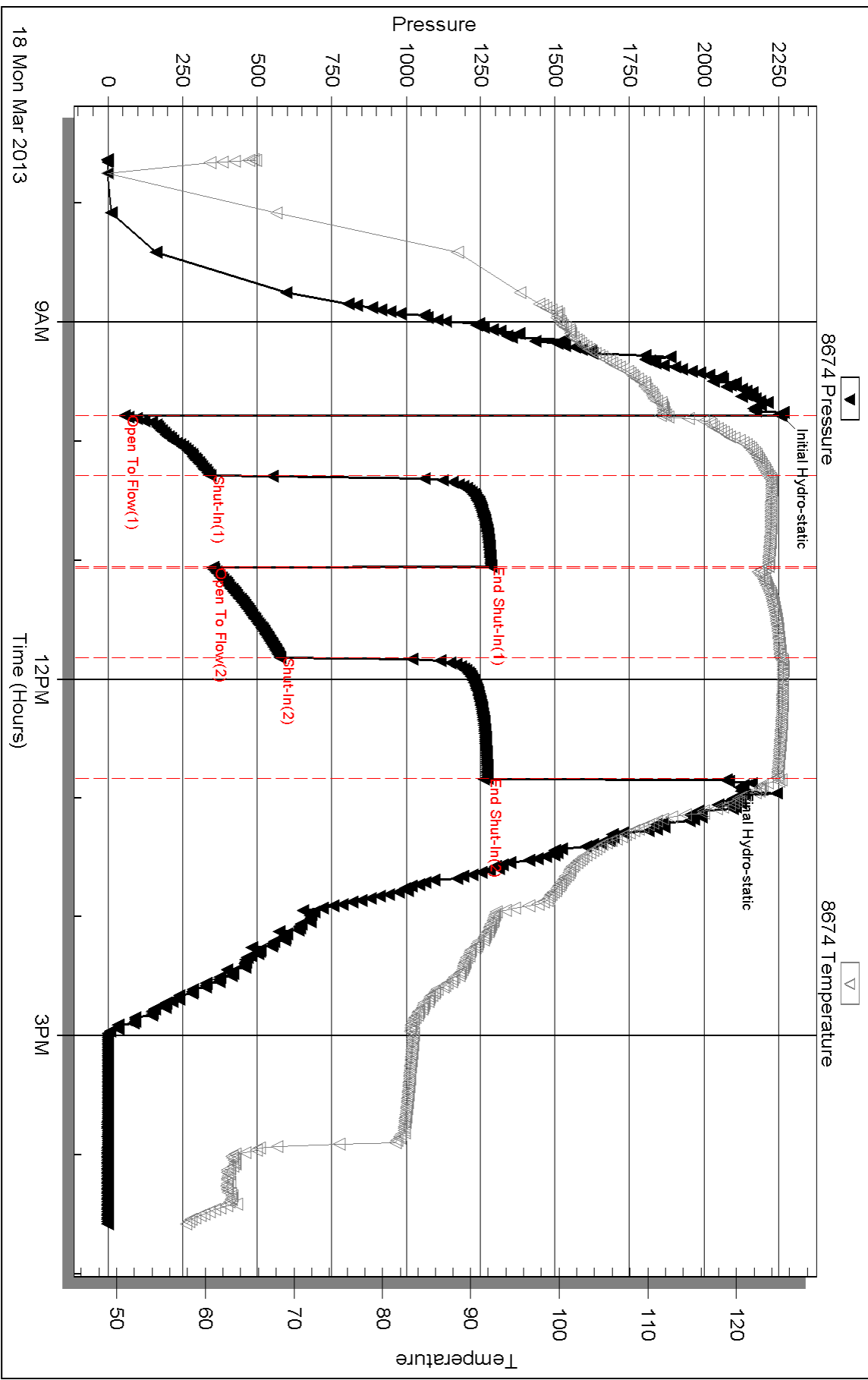
Inside

Hartman Oil Co. Inc

Wilkinson #2-22

DST Test Number: 1

### Pressure vs. Time



18 Mon Mar 2013

9AM

12PM

3PM

Triobite Testing, Inc

Ref. No: 49793

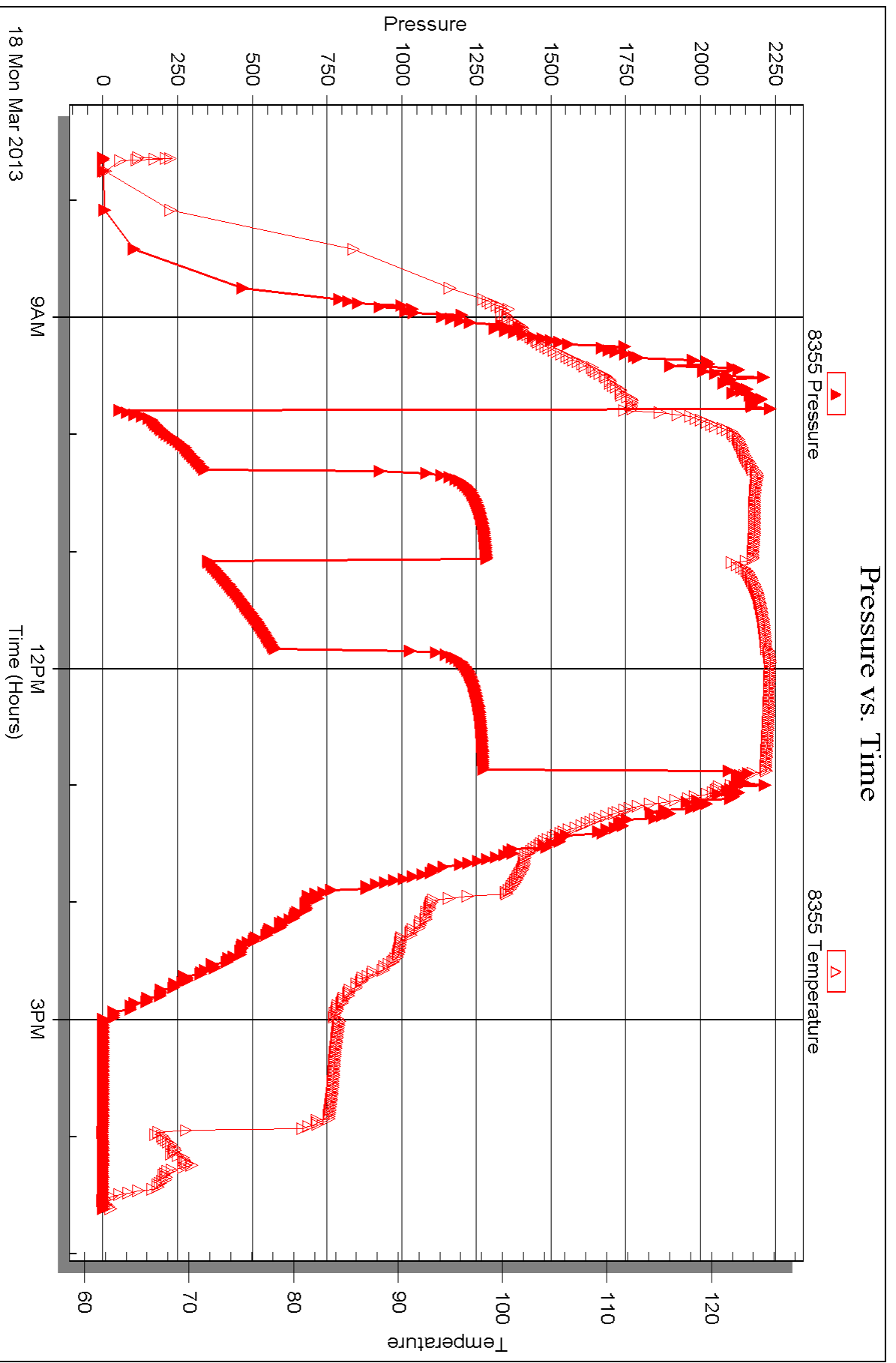
Printed: 2013.03.22 @ 10:16:20

Serial #: 8355

Outside Hartman Oil Co. Inc

Wilkinson #2-22

DST Test Number: 1



Triobite Testing, Inc

Ref. No: 49793

Printed: 2013.03.22 @ 10:16:21



## DRILL STEM TEST REPORT

Prepared For: **Hartman Oil Co. Inc**

10500 E Berkeley Sq  
PKWY Ste 100  
Wichita KS 67206

ATTN: Kitt Noah

**Wilkinson #2-22**

**22-17s-34w Scott,KS**

Start Date: 2013.03.19 @ 05:12:00

End Date: 2013.03.19 @ 13:08:24

Job Ticket #: 49794                      DST #: 2

Trilobite Testing, Inc  
PO Box 362 Hays, KS 67601  
ph: 785-625-4778 fax: 785-625-5620

Printed: 2013.03.22 @ 10:13:54





**TRILOBITE  
TESTING, INC.**

# DRILL STEM TEST REPORT

Hartman Oil Co. Inc  
10500 E Berkeley Sq  
PKWY Ste 100  
Wichita KS 67206  
ATTN: Kitt Noah

**22-17s-34w Scott,KS**

**Wilkinson #2-22**

Job Ticket: 49794

**DST#: 2**

Test Start: 2013.03.19 @ 05:12:00

## GENERAL INFORMATION:

Formation: **Pawnee / Myric Stati**

Deviated: No Whipstock: ft (KB)

Time Tool Opened: 07:21:55

Time Test Ended: 13:08:24

Test Type: Conventional Bottom Hole (Reset)

Tester: Will MacLean

Unit No: 58

**Interval: 4570.00 ft (KB) To 4630.00 ft (KB) (TVD)**

Total Depth: 4630.00 ft (KB) (TVD)

Hole Diameter: 7.88 inches Hole Condition: Good

Reference Elevations: 3119.00 ft (KB)

3110.00 ft (CF)

KB to GR/CF: 9.00 ft

**Serial #: 8674 Inside**

Press @ Run Depth: 53.55 psig @ 4571.00 ft (KB)

Start Date: 2013.03.19

End Date: 2013.03.19

Start Time: 05:12:00

End Time: 13:08:24

Capacity: 8000.00 psig

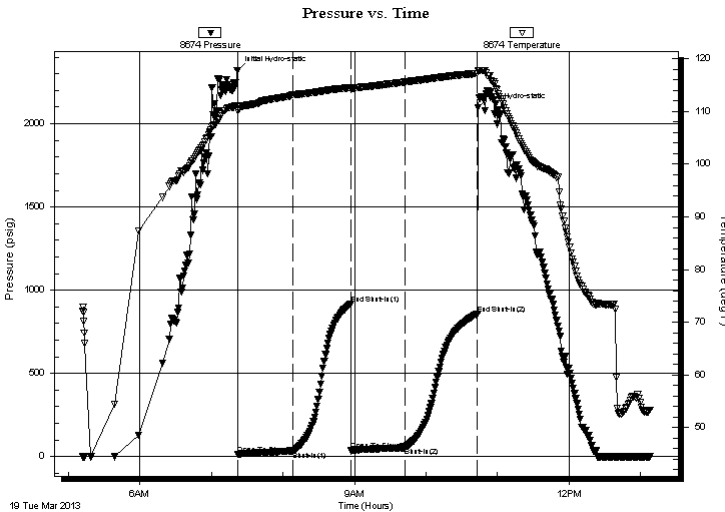
Last Calib.: 2013.03.19

Time On Btm: 2013.03.19 @ 07:21:40

Time Off Btm: 2013.03.19 @ 10:43:39

**TEST COMMENT:** IF- Weak Surface Blow Built to 9"  
IS- No Blow  
FF- Weak Surface Blow Built to 7"  
FS- No Blow

## PRESSURE SUMMARY



Time (Min.)	Pressure (psig)	Temp (deg F)	Annotation
0	2320.58	111.07	Initial Hydro-static
1	13.37	110.20	Open To Flow (1)
47	34.11	113.21	Shut-In(1)
95	917.41	114.54	End Shut-In(1)
96	35.69	114.31	Open To Flow (2)
141	53.55	115.60	Shut-In(2)
202	858.74	117.22	End Shut-In(2)
202	2098.35	117.80	Final Hydro-static

## Recovery

Length (ft)	Description	Volume (bbl)
62.00	GOCM 21%g 27%oil 52%m	0.30
31.00	GMCO 4%g 9%m 87%oil	0.15
0.00	472' of GIP	0.00

\* Recovery from multiple tests

## Gas Rates

Choke (inches)	Pressure (psig)	Gas Rate (Mcf/d)



**TRILOBITE  
TESTING, INC.**

# DRILL STEM TEST REPORT

Hartman Oil Co. Inc  
10500 E Berkeley Sq  
PKWY Ste 100  
Wichita KS 67206  
ATTN: Kitt Noah

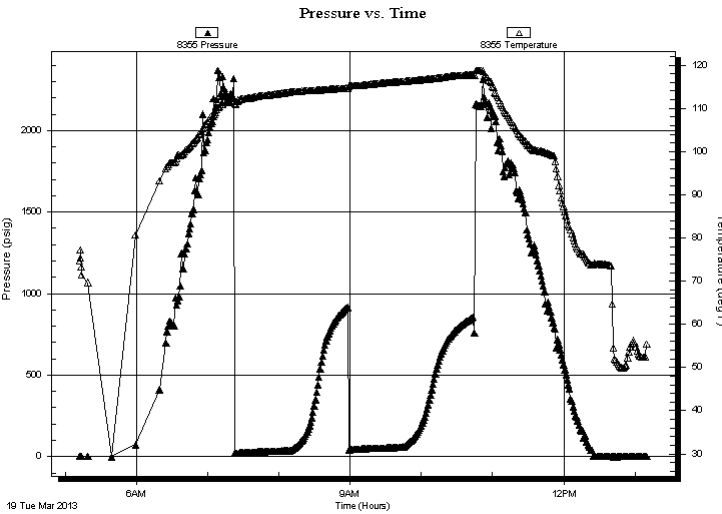
**22-17s-34w Scott, KS**  
**Wilkinson #2-22**  
Job Ticket: 49794 **DST#: 2**  
Test Start: 2013.03.19 @ 05:12:00

## GENERAL INFORMATION:

Formation: **Pawnee / Myric Stati**  
Deviated: No Whipstock: ft (KB) Test Type: Conventional Bottom Hole (Reset)  
Time Tool Opened: 07:21:55 Tester: Will MacLean  
Time Test Ended: 13:08:24 Unit No: 58  
**Interval: 4570.00 ft (KB) To 4630.00 ft (KB) (TVD)** Reference Elevations: 3119.00 ft (KB)  
Total Depth: 4630.00 ft (KB) (TVD) 3110.00 ft (CF)  
Hole Diameter: 7.88 inches Hole Condition: Good KB to GR/CF: 9.00 ft

**Serial #: 8355 Outside**  
Press @ Run Depth: psig @ 4571.00 ft (KB) Capacity: 8000.00 psig  
Start Date: 2013.03.19 End Date: 2013.03.19 Last Calib.: 2013.03.19  
Start Time: 05:12:05 End Time: 13:10:14 Time On Btm:  
Time Off Btm:

**TEST COMMENT:** IF- Weak Surface Blow Built to 9"  
IS- No Blow  
FF- Weak Surface Blow Built to 7"  
FS- No Blow



## PRESSURE SUMMARY

Time (Min.)	Pressure (psig)	Temp (deg F)	Annotation

## Recovery

Length (ft)	Description	Volume (bbl)
62.00	GOCM 21%g 27%oil 52%m	0.30
31.00	GMCO 4%g 9%m 87%oil	0.15
0.00	472' of GIP	0.00

\* Recovery from multiple tests

## Gas Rates

	Choke (inches)	Pressure (psig)	Gas Rate (Mcf/d)



**TRILOBITE  
TESTING, INC.**

# DRILL STEM TEST REPORT

**TOOL DIAGRAM**

Hartman Oil Co. Inc

**22-17s-34w Scott,KS**

10500 E Berkeley Sq  
PKWY Ste 100  
Wichita KS 67206  
ATTN: Kitt Noah

**Wilkinson #2-22**

Job Ticket: 49794

**DST#: 2**

Test Start: 2013.03.19 @ 05:12:00

## Tool Information

Drill Pipe:	Length: 4270.00 ft	Diameter: 3.80 inches	Volume: 59.90 bbl	Tool Weight:	1500.00 lb
Heavy Wt. Pipe:	Length: 0.00 ft	Diameter: 0.00 inches	Volume: 0.00 bbl	Weight set on Packer:	24000.00 lb
Drill Collar:	Length: 310.00 ft	Diameter: 2.25 inches	Volume: 1.52 bbl	Weight to Pull Loose:	6000.00 lb
			<u>Total Volume: 61.42 bbl</u>	Tool Chased	ft
Drill Pipe Above KB:	30.00 ft			String Weight: Initial	60000.00 lb
Depth to Top Packer:	4570.00 ft			Final	60000.00 lb
Depth to Bottom Packer:	ft				
Interval between Packers:	60.00 ft				
Tool Length:	80.00 ft				
Number of Packers:	2	Diameter: 6.75 inches			

Tool Comments:

## Tool Description

Tool Description	Length (ft)	Serial No.	Position	Depth (ft)	Accum. Lengths
Change Over Sub	1.00			4551.00	
Shut In Tool	5.00			4556.00	
Hydraulic tool	5.00			4561.00	
Packer	5.00			4566.00	20.00 Bottom Of Top Packer
Packer	4.00			4570.00	
Stubb	1.00			4571.00	
Recorder	0.00	8355	Outside	4571.00	
Recorder	0.00	8674	Inside	4571.00	
Perforations	23.00			4594.00	
Change Over Sub	1.00			4595.00	
Drill Pipe	31.00			4626.00	
Change Over Sub	1.00			4627.00	
Bullnose	3.00			4630.00	60.00 Bottom Packers & Anchor

**Total Tool Length: 80.00**



**TRILOBITE  
TESTING, INC.**

# DRILL STEM TEST REPORT

**FLUID SUMMARY**

Hartman Oil Co. Inc

**22-17s-34w Scott,KS**

10500 E Berkeley Sq  
PKWY Ste 100  
Wichita KS 67206  
ATTN: Kitt Noah

**Wilkinson #2-22**

Job Ticket: 49794

**DST#: 2**

Test Start: 2013.03.19 @ 05:12:00

## Mud and Cushion Information

Mud Type: Gel Chem

Cushion Type:

Oil API:

28 deg API

Mud Weight: 9.00 lb/gal

Cushion Length:

ft

Water Salinity:

ppm

Viscosity: 50.00 sec/qt

Cushion Volume:

bbbl

Water Loss: 6.39 in<sup>3</sup>

Gas Cushion Type:

Resistivity: ohm.m

Gas Cushion Pressure:

psig

Salinity: 7800.00 ppm

Filter Cake: 1.00 inches

## Recovery Information

Recovery Table

Length ft	Description	Volume bbbl
62.00	GOCM 21%g 27%oil 52%m	0.305
31.00	GMCO 4%g 9%m 87%oil	0.152
0.00	472' of GIP	0.000

Total Length: 93.00 ft      Total Volume: 0.457 bbl

Num Fluid Samples: 0

Num Gas Bombs: 0

Serial #:

Laboratory Name:

Laboratory Location:

Recovery Comments: API is 29 @ 70f = 28

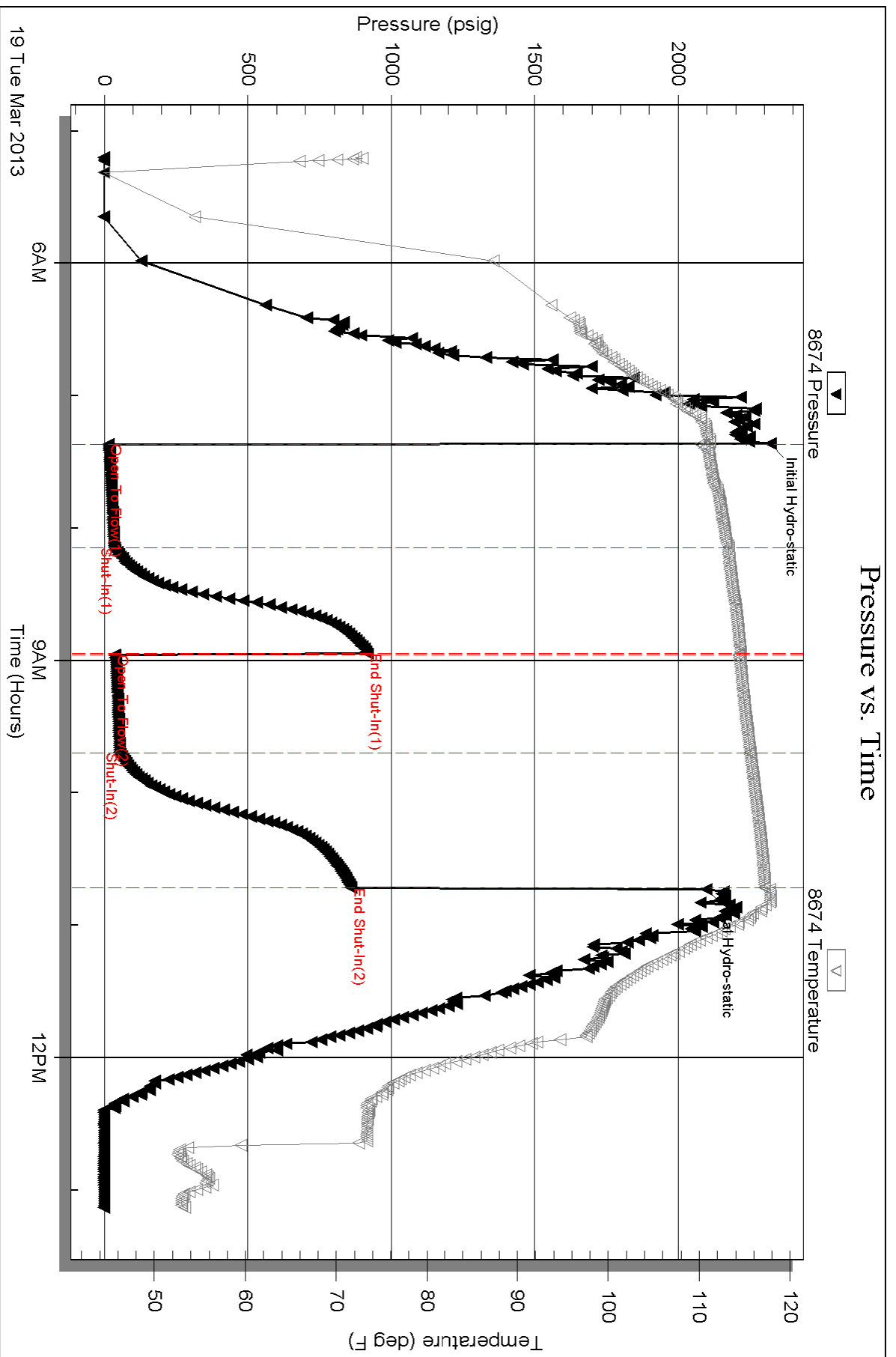
Serial #: 8674

Inside

Hartman Oil Co. Inc

Wilkinson #2-22

DST Test Number: 2

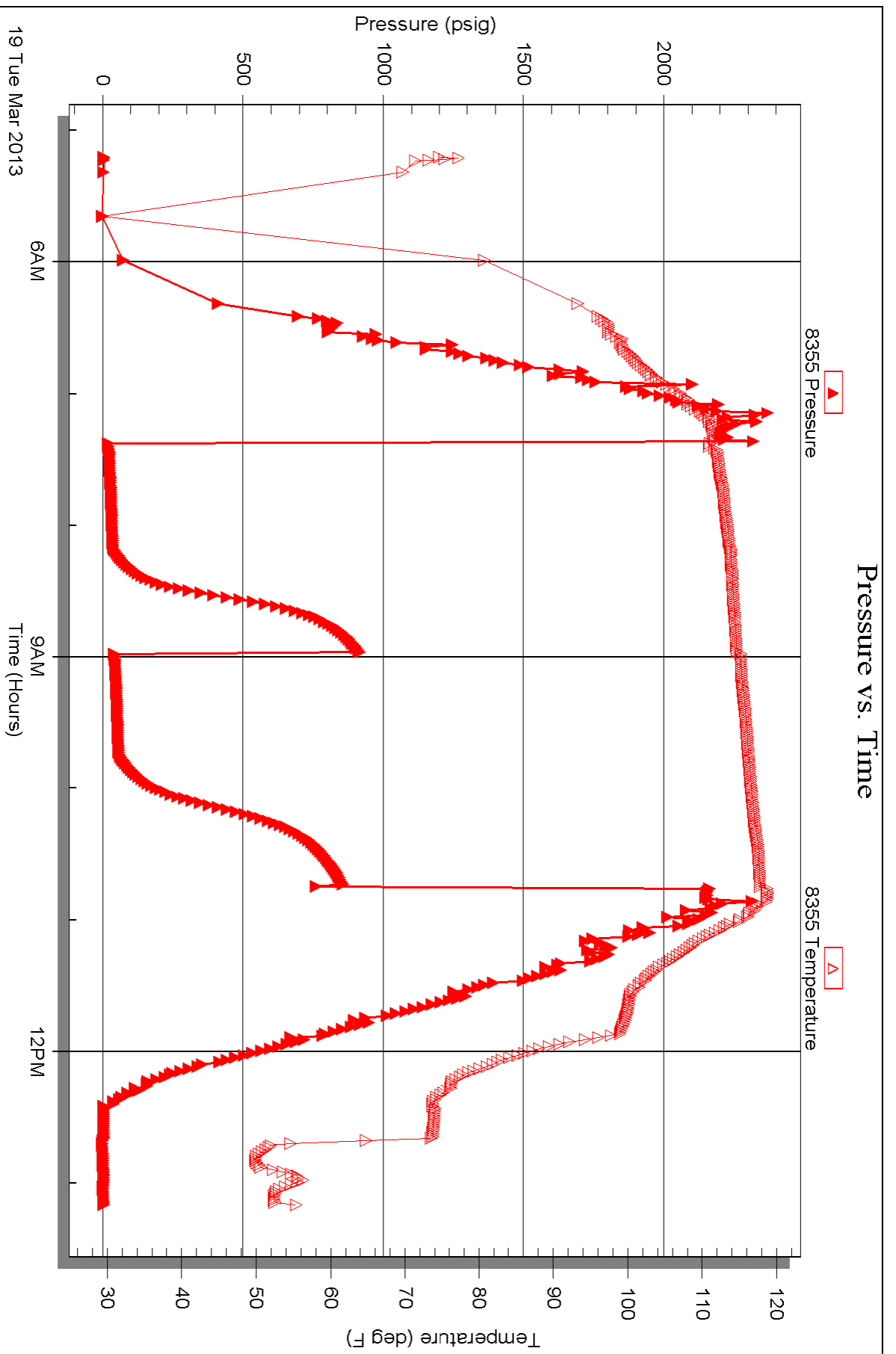


Serial #: 8355

Outside Hartman Oil Co. Inc

Wilkinson #2-22

DST Test Number: 2





# TRILOBITE TESTING INC.

1515 Commerce Parkway • Hays, Kansas 67601

## Test Ticket

NO. 49793

Well Name & No. Wilkinson # 2-22 Test No. DST #1 Date 3-18-13  
 Company Hartman Oil Co. Inc Elevation 3119 KB \_\_\_\_\_ GL \_\_\_\_\_  
 Address 10500 E. Berkeley Sq PKWY STE 100 Wichita KS 67206  
 Co. Rep / Geo. Kitt Noah Rig H-2 Rig #3  
 Location: Sec. 22 Twp. 17s Rge. 34w Co. Scott State KS

Interval Tested 4501 - 4555 Zone Tested Marmanton "B-C"  
 Anchor Length 54 Drill Pipe Run 4175 Mud Wt. 9.1  
 Top Packer Depth 4497 Drill Collars Run 310 Vis 52  
 Bottom Packer Depth 4501 Wt. Pipe Run 0 WL 7.2  
 Total Depth 4555 Chlorides 11,000 ppm System LCM 116

Blow Description IF - Surface Blow Built to BOB in 4 1/4 min  
ISI - Weak Surface Blow in 3 min Built to 4 1/8"  
FF - Surface Blow Built to BOB in 5 1/2 min  
FSI - Weak Surface Blow in 1 min Built to 1" Dried Back to 1/4"

Rec	Feet of	%gas	%oil	%water	%mud
<u>108</u>	<u>G-MCO</u>	<u>8</u>	<u>69</u>	<u>23</u>	<u>0</u>
<u>189</u>	<u>MCO</u>	<u>38</u>	<u>50</u>	<u>12</u>	<u>0</u>
<u>441</u>	<u>MCO</u>	<u>19</u>	<u>73</u>	<u>8</u>	<u>0</u>
<u>315</u>	<u>MWCO</u>	<u>15</u>	<u>78</u>	<u>4</u>	<u>3</u>
<u>373</u>	<u>MWCO</u>	<u>30</u>	<u>47</u>	<u>15</u>	<u>8</u>

Rec Total 1426 BHT 119 Gravity 28 API RW 206 @ 65 °F Chlorides 38000 ppm

(A) Initial Hydrostatic 2258  
 (B) First Initial Flow 54  
 (C) First Final Flow 343  
 (D) Initial Shut-In 1285  
 (E) Second Initial Flow 351  
 (F) Second Final Flow 577  
 (G) Final Shut-In 1274  
 (H) Final Hydrostatic 2074

Test 1250  
 Jars 250  
 Safety Joint 75  
 Circ Sub NIC  
 Hourly Standby  
 Mileage 32 RIT 49.60  
 Sampler  
 Straddle  
 Shale Packer  
 Extra Packer  
 Extra Recorder  
 Day Standby  
 Accessibility  
 Sub Total 1624.60

T-On Location 5:42  
 T-Started 7:38  
 T-Open 9:47  
 T-Pulled 12:50  
 T-Out 16:35

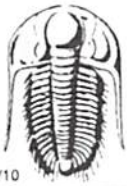
Comments API is 29 @ 70 + = 28  
378' of G-IP  
 Ruined Shale Packer  
 Ruined Packer  
 Extra Copies  
 Sub Total 0  
 Total 1624.60  
 MP/DST Disc't \_\_\_\_\_

Initial Open 30  
 Initial Shut-In 45  
 Final Flow 45  
 Final Shut-In 60

Approved By Kitt Noah

Our Representative Will M

Trilobite Testing Inc. shall not be liable for damaged of any kind of the property or personnel of the one for whom a test is made, or for any loss suffered or sustained, directly or indirectly, through the use of its equipment, or its statements or opinion concerning the results of any test, tools lost or damaged in the hole shall be paid for at cost by the party for whom the test is made.



# TRILOBITE TESTING INC.

1515 Commerce Parkway • Hays, Kansas 67601

## Test Ticket

NO. 49794

Well Name & No. Wilkinson #2-22 Test No. DST #2 Date 3-19-13  
 Company Hartman Oil Co. Inc Elevation 3119 KB 3110 GL  
 Address 10500 E Berkeley Sq PKWY Ste 100 Wichita KS 67206  
 Co. Rep / Geo. Kitt Noah Rig H-2 Rig #3  
 Location: Sec. 22 Twp. 17s Rge. 34W Co. Scott State KS

Interval Tested 4570 - 4630 Zone Tested Pawnee / Myric Station  
 Anchor Length 60 Drill Pipe Run 4270 Mud Wt. 9.4  
 Top Packer Depth 4566 Drill Collars Run 310 Vis 50  
 Bottom Packer Depth 4570 Wt. Pipe Run 0 WL 6.4  
 Total Depth 4630 Chlorides 7800 ppm System LCM 116

Blow Description TF- Weak Surface Blow Built to 9"  
ISI- No Blow  
FF- Weak Surface Blow Built to 7"  
FSI- No Blow

Rec	Feet of	%gas	%oil	%water	%mud
<u>31</u>	<u>G M C O</u>	<u>4</u>	<u>87</u>	<u>9</u>	
<u>62</u>	<u>G O C M</u>	<u>21</u>	<u>27</u>	<u>52</u>	
	<u>472' of GIP</u>				

Rec Total 93 BHT 111 Gravity 28 API RW @      ° F Chlorides      ppm

(A) Initial Hydrostatic 2320  Test 1250  
 (B) First Initial Flow 13  Jars       
 (C) First Final Flow 34  Safety Joint       
 (D) Initial Shut-In 917  Circ Sub NIC  
 (E) Second Initial Flow 35  Hourly Standby       
 (F) Second Final Flow 53  Mileage 32 RIT 49.60  
 (G) Final Shut-In 858  Sampler       
 (H) Final Hydrostatic 2098  Straddle       
 Shale Packer       
 Extra Packer       
 Extra Recorder       
 Day Standby       
 Accessibility       
 Sub Total 1299.60

T-On Location 4:10  
 T-Started 5:12  
 T-Open 7:21  
 T-Pulled 10:43  
 T-Out 13:08

Comments API is 29 @ 70 f = 28

Ruined Shale Packer       
 Ruined Packer       
 Extra Copies       
 Sub Total 0  
 Total 1299.60  
 MP/DST Disc't     

Approved By Kitt Noah Our Representative Will M...

Trilobite Testing Inc. shall not be liable for damaged of any kind of the property or personnel of the one for whom a test is made, or for any loss suffered or sustained, directly or indirectly, through the use of its equipment, or its statements or opinion concerning the results of any test, tools lost or damaged in the hole shall be paid for at cost by the party for whom the test is made.