



**TRILOBITE  
TESTING, INC.**

# DRILL STEM TEST REPORT

CMX INC  
1700 N Waterfront  
Pkw y Bldg 300 E  
Wichita Ks 67206  
ATTN: Leah Kasten

**33-27s-16w**

**Davis Farms 1-v**

Job Ticket: 44307

**DST#: 1**

Test Start: 2012.11.04 @ 15:33:51

## GENERAL INFORMATION:

Formation: **Viola**  
 Deviated: No Whipstock: ft (KB)  
 Time Tool Opened: 17:58:51  
 Time Test Ended: 00:05:21  
 Interval: **4797.00 ft (KB) To 4815.00 ft (KB) (TVD)**  
 Total Depth: 4815.00 ft (KB) (TVD)  
 Hole Diameter: 7.88 inches Hole Condition: Good  
 Test Type: Conventional Bottom Hole (Initial)  
 Tester: Jeff Brown  
 Unit No: 44  
 Reference Elevations: 2155.00 ft (KB)  
 2142.00 ft (CF)  
 KB to GR/CF: 13.00 ft

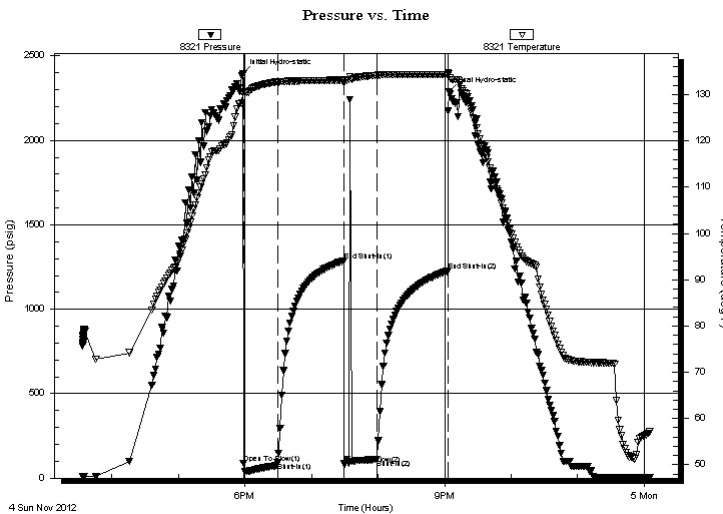
## Serial #: 8321

Inside

Press @ Run Depth: 112.28 psig @ 4798.00 ft (KB) Capacity: 8000.00 psig  
 Start Date: 2012.11.04 End Date: 2012.11.05 Last Calib.: 2012.11.05  
 Start Time: 15:33:52 End Time: 00:05:21 Time On Btm: 2012.11.04 @ 17:58:21  
 Time Off Btm: 2012.11.04 @ 21:03:51

TEST COMMENT: IFP=Good blow built to 10 1/4 In  
 ISI=Dead no blow back  
 FFP=Dead-Fluher tool then weak blow built to 6 in  
 FSI=Dead no blow back

## PRESSURE SUMMARY



Time (Min.)	Pressure (psig)	Temp (deg F)	Annotation
0	2397.51	130.44	Initial Hydro-static
1	87.61	130.48	Open To Flow (1)
31	93.00	132.78	Shut-In(1)
91	1286.93	133.15	End Shut-In(1)
91	84.62	132.69	Open To Flow (2)
121	112.28	134.19	Shut-In(2)
185	1226.64	134.32	End Shut-In(2)
186	2286.28	134.57	Final Hydro-static

## Recovery

Length (ft)	Description	Volume (bbl)
124.00	MW with a scum of oil 20%M 80%W	0.61
15.00	Mud with oil spots	0.07
62.00	V SOCGMW 3%O 5%G 35%M 57%W	0.51
0.00	140-GIP	0.00

## Gas Rates

Choke (inches)	Pressure (psig)	Gas Rate (Mcf/d)



**TRILOBITE  
TESTING, INC.**

# DRILL STEM TEST REPORT

**FLUID SUMMARY**

CMX INC

**33-27s-16w**

1700 N Waterfront  
Pkw y Bldg 300 E  
Wichita Ks 67206  
ATTN: Leah Kasten

**Davis Farms 1-v**

Job Ticket: 44307

**DST#: 1**

Test Start: 2012.11.04 @ 15:33:51

## Mud and Cushion Information

Mud Type: Gel Chem

Mud Weight: 9.00 lb/gal

Viscosity: 51.00 sec/qt

Water Loss: 8.79 in<sup>3</sup>

Resistivity: ohm.m

Salinity: 5500.00 ppm

Filter Cake: inches

Cushion Type:

Cushion Length: ft

Cushion Volume: bbl

Gas Cushion Type:

Gas Cushion Pressure: psig

Oil API:

Water Salinity: deg API

ppm

## Recovery Information

Recovery Table

Length ft	Description	Volume bbl
124.00	MW with a scum of oil 20%M 80%W	0.610
15.00	Mud with oil spots	0.074
62.00	VSOCGMW 3%O 5%G 35%M 57%W	0.514
0.00	140-GIP	0.000

Total Length: 201.00 ft      Total Volume: 1.198 bbl

Num Fluid Samples: 0

Num Gas Bombs: 0

Serial #:

Laboratory Name:

Laboratory Location:

Recovery Comments:

# Pressure vs. Time

