



**TRILOBITE  
TESTING, INC.**

# DRILL STEM TEST REPORT

Eagle Creek Corp.

**12-17s-34w-Scott KS**

150 N Main STE 905  
Wichita KS 67202

**Wilkinson #2-18**

Job Ticket: 51422

**DST#: 1**

ATTN: Gary Gensch

Test Start: 2013.02.16 @ 23:51:15

## GENERAL INFORMATION:

Formation: **LCK I-J**

Deviated: No Whipstock: ft (KB)

Time Tool Opened: 02:26:45

Time Test Ended: 08:48:45

Test Type: Conventional Bottom Hole (Initial)

Tester: Tate Lang

Unit No: 60

**Interval: 4261.00 ft (KB) To 4317.00 ft (KB) (TVD)**

Reference Elevations: 3135.00 ft (KB)

Total Depth: 4327.00 ft (KB) (TVD)

3127.00 ft (CF)

Hole Diameter: 7.88 inches Hole Condition: Good

KB to GR/CF: 8.00 ft

**Serial #: 8373**

**Inside**

Press @ Run Depth: 182.58 psig @ 4273.00 ft (KB)

Capacity: 8000.00 psig

Start Date: 2013.02.16

End Date:

2013.02.17

Last Calib.:

2013.02.17

Start Time: 23:51:20

End Time:

08:48:45

Time On Btm:

2013.02.17 @ 02:26:15

Time Off Btm:

2013.02.17 @ 06:12:45

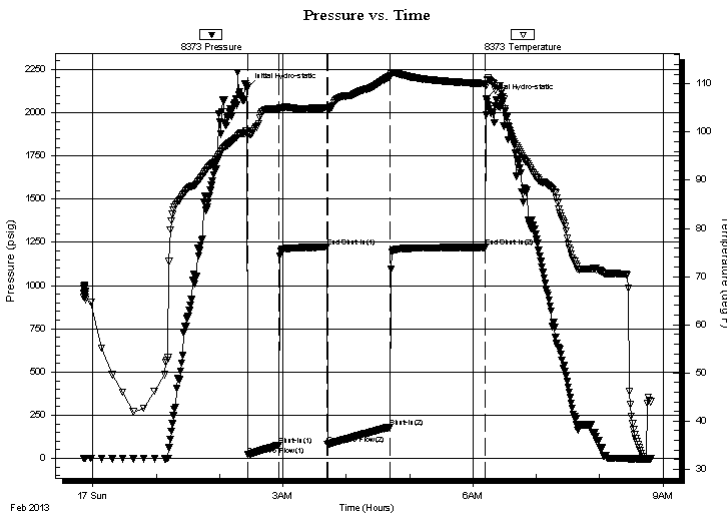
**TEST COMMENT:** IF-Fair surface blow built to 8 in.

ISI-Dead no blow

FF-B.O.B. In 25 mins.

FSI-Dead no blow

## PRESSURE SUMMARY



Time (Min.)	Pressure (psig)	Temp (deg F)	Annotation
0	2146.77	100.25	Initial Hydro-static
1	20.35	99.62	Open To Flow (1)
30	77.84	104.56	Shut-In(1)
75	1222.65	105.08	End Shut-In(1)
76	81.74	104.68	Open To Flow (2)
136	182.58	111.64	Shut-In(2)
225	1221.46	110.07	End Shut-In(2)
227	2079.64	109.73	Final Hydro-static

## Recovery

Length (ft)	Description	Volume (bbl)
124.00	20%M 80%W	1.74
124.00	5%W 95%M	1.74
108.00	100%M With oil spots	1.51

## Gas Rates

	Choke (inches)	Pressure (psig)	Gas Rate (Mcf/d)



**TRILOBITE  
TESTING, INC.**

# DRILL STEM TEST REPORT

**FLUID SUMMARY**

Eagle Creek Corp.

**12-17s-34w-Scott KS**

150 N Main STE 905  
Wichita KS 67202

**Wilkinson #2-18**

Job Ticket: 51422

**DST#: 1**

ATTN: Gary Gensch

Test Start: 2013.02.16 @ 23:51:15

## Mud and Cushion Information

Mud Type: Gel Chem

Cushion Type:

Oil API:

deg API

Mud Weight: 9.00 lb/gal

Cushion Length:

ft

Water Salinity:

42000 ppm

Viscosity: 52.00 sec/qt

Cushion Volume:

bbbl

Water Loss: 4.80 in<sup>3</sup>

Gas Cushion Type:

Resistivity: ohm.m

Gas Cushion Pressure:

psig

Salinity: 6500.00 ppm

Filter Cake: 1.00 inches

## Recovery Information

Recovery Table

Length ft	Description	Volume bbbl
124.00	20%M 80%W	1.739
124.00	5%W 95%M	1.739
108.00	100%M With oil spots	1.515

Total Length: 356.00 ft      Total Volume: 4.993 bbl

Num Fluid Samples: 0

Num Gas Bombs: 0

Serial #:

Laboratory Name:

Laboratory Location:

Recovery Comments: API RW .350 @ 35F = 42000

