



**TRILOBITE TESTING, INC.**

# DRILL STEM TEST REPORT

Eagle Creek Corp.

**12-17s-34w-Scott KS**

150 N Main STE 905  
Wichita KS 67202

**Wilkinson #2-18**

Job Ticket: 51424

**DST#: 3**

ATTN: Gary Gensch

Test Start: 2013.02.18 @ 16:28:16

## GENERAL INFORMATION:

Formation: **Marmaton "B"**

Deviated: No Whipstock: ft (KB)

Time Tool Opened: 18:41:16

Time Test Ended: 00:33:16

Test Type: Conventional Bottom Hole (Reset)

Tester: Tate Lang

Unit No: 60

**Interval: 4482.00 ft (KB) To 4496.00 ft (KB) (TVD)**

Total Depth: 4496.00 ft (KB) (TVD)

Hole Diameter: 7.88 inches Hole Condition: Good

Reference Elevations: 3135.00 ft (KB)

3127.00 ft (CF)

KB to GR/CF: 8.00 ft

**Serial #: 8373**

**Inside**

Press @ Run Depth: 19.68 psig @ 4483.00 ft (KB)

Start Date: 2013.02.18

End Date:

2013.02.19

Start Time: 16:28:21

End Time:

00:33:15

Capacity: 8000.00 psig

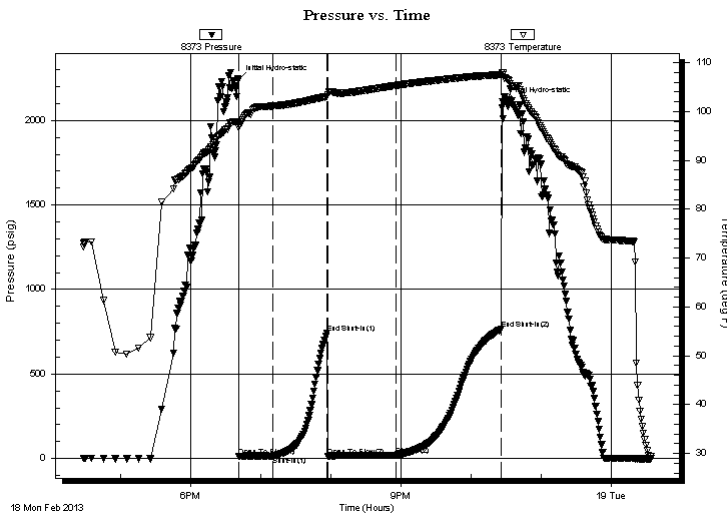
Last Calib.: 2013.02.19

Time On Btm: 2013.02.18 @ 18:40:46

Time Off Btm: 2013.02.18 @ 22:26:46

**TEST COMMENT:** IF-Weak surface blow built to 1in.  
ISI-Dead no return blow.  
FF-Weak surface blow built to 1 1/2 in.  
FSI-Dead no return blow.

## PRESSURE SUMMARY



Time (Min.)	Pressure (psig)	Temp (deg F)	Annotation
0	2240.62	97.56	Initial Hydro-static
1	12.75	96.72	Open To Flow (1)
30	14.49	101.10	Shut-In(1)
76	740.42	103.03	End Shut-In(1)
77	13.08	103.42	Open To Flow (2)
135	19.68	105.33	Shut-In(2)
225	765.68	107.51	End Shut-In(2)
226	2111.26	107.88	Final Hydro-static

## Recovery

Length (ft)	Description	Volume (bbl)
18.00	40%O 60%M	0.25
2.00	100%O	0.03

## Gas Rates

	Choke (inches)	Pressure (psig)	Gas Rate (Mcf/d)

\* Recovery from multiple tests



**TRILOBITE  
TESTING, INC.**

# DRILL STEM TEST REPORT

**FLUID SUMMARY**

Eagle Creek Corp.

**12-17s-34w-Scott KS**

150 N Main STE 905  
Wichita KS 67202

**Wilkinson #2-18**

Job Ticket: 51424

**DST#: 3**

ATTN: Gary Gensch

Test Start: 2013.02.18 @ 16:28:16

## Mud and Cushion Information

Mud Type: Gel Chem

Cushion Type:

Oil API:

deg API

Mud Weight: 9.00 lb/gal

Cushion Length:

ft

Water Salinity:

ppm

Viscosity: 60.00 sec/qt

Cushion Volume:

bbbl

Water Loss: 6.40 in<sup>3</sup>

Gas Cushion Type:

Resistivity: ohm.m

Gas Cushion Pressure:

psig

Salinity: 9000.00 ppm

Filter Cake: 1.00 inches

## Recovery Information

Recovery Table

Length ft	Description	Volume bbbl
18.00	40%O 60%M	0.252
2.00	100%O	0.028

Total Length: 20.00 ft      Total Volume: 0.280 bbl

Num Fluid Samples: 0

Num Gas Bombs: 0

Serial #:

Laboratory Name:

Laboratory Location:

Recovery Comments:

