



TRILOBITE TESTING, INC.

DRILL STEM TEST REPORT

Gore Oil Company

29-9s 17w Rooks, KS

PO Box 2757
Wichita, KS 67202

Harry #1

Job Ticket: **DST#: 1**

ATTN: Al Downing

Test Start: 2012.10.23 @ 16:54:38

GENERAL INFORMATION:

Formation: **Lansing C**

Deviated: No Whipstock: ft (KB)

Time Tool Opened: 18:40:38

Time Test Ended: 21:04:08

Test Type: Conventional Bottom Hole (Initial)

Tester: Paul Simpson

Unit No: 64

Interval: 3346.00 ft (KB) To 3425.00 ft (KB) (TVD)

Reference Elevations: 2139.00 ft (KB)

Total Depth: 3425.00 ft (KB) (TVD)

2131.00 ft (CF)

Hole Diameter: 7.88 inches Hole Condition: Poor

KB to GR/CF: 8.00 ft

Serial #: 6669 Inside

Press @ Run Depth: 47.81 psig @ 3412.00 ft (KB)

Capacity: 8000.00 psig

Start Date: 2012.10.23

End Date:

2012.10.23

Last Calib.: 2012.10.23

Start Time: 16:54:43

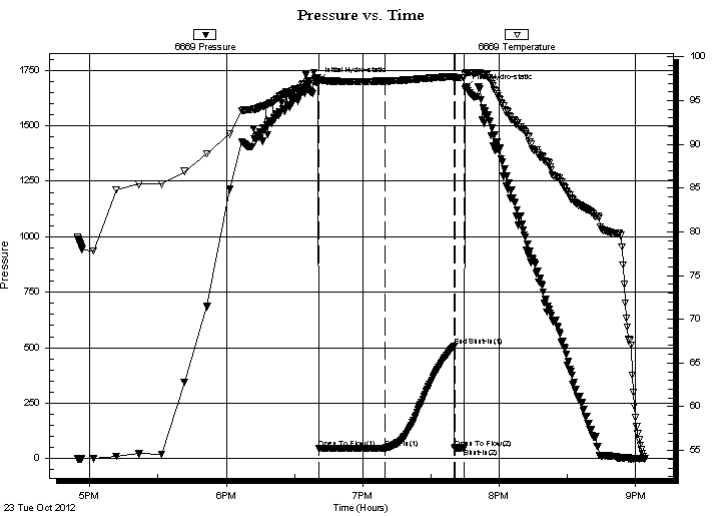
End Time:

21:04:08

Time On Btm: 2012.10.23 @ 18:40:23

Time Off Btm: 2012.10.23 @ 19:44:53

TEST COMMENT: IF 30- weak blow died in 25 minutes
ISI 30
FF 5 no blow pulled tool



PRESSURE SUMMARY

Time (Min.)	Pressure (psig)	Temp (deg F)	Annotation
0	1698.71	97.63	Initial Hydro-static
1	46.16	97.37	Open To Flow (1)
30	47.81	97.25	Shut-In(1)
60	506.71	97.79	End Shut-In(1)
60	46.52	97.54	Open To Flow (2)
65	49.03	97.67	Shut-In(2)
65	1666.89	98.01	Final Hydro-static

Recovery

Length (ft)	Description	Volume (bbl)
3.00	mud	0.04

Gas Rates

Choke (inches)	Pressure (psig)	Gas Rate (Mcf/d)



**TRILOBITE
TESTING, INC.**

DRILL STEM TEST REPORT

TOOL DIAGRAM

Gore Oil Company

29-9s 17w Rooks,KS

PO Box 2757
Wichita,KS 67202

Harry #1

Job Ticket:

DST#: 1

ATTN: Al Downing

Test Start: 2012.10.23 @ 16:54:38

Tool Information

Drill Pipe:	Length: 3340.00 ft	Diameter: 3.80 inches	Volume: 46.85 bbl	Tool Weight:	2200.00 lb
Heavy Wt. Pipe:	Length: 0.00 ft	Diameter: 0.00 inches	Volume: 0.00 bbl	Weight set on Packer:	20000.00 lb
Drill Collar:	Length: 0.00 ft	Diameter: 2.25 inches	Volume: 0.00 bbl	Weight to Pull Loose:	60000.00 lb
			<u>Total Volume: 46.85 bbl</u>	Tool Chased	ft
Drill Pipe Above KB:	15.00 ft			String Weight: Initial	50000.00 lb
Depth to Top Packer:	3346.00 ft			Final	50000.00 lb
Depth to Bottom Packer:	ft				
Interval between Packers:	78.00 ft				
Tool Length:	99.00 ft				
Number of Packers:	2	Diameter: 6.75 inches			
Tool Comments:					

Tool Description	Length (ft)	Serial No.	Position	Depth (ft)	Accum. Lengths
------------------	-------------	------------	----------	------------	----------------

Change Over Sub	1.00			3326.00	
Shut In Tool	5.00			3331.00	
Hydraulic tool	5.00			3336.00	
Packer	5.00			3341.00	21.00 Bottom Of Top Packer
Packer	5.00			3346.00	
Stubb	1.00			3347.00	
perforations	2.00			3349.00	
Change Over Sub	1.00			3350.00	
Blank Spacing	61.00			3411.00	
change Over Sub	1.00			3412.00	
Recorder	0.00	6669	Inside	3412.00	
Recorder	0.00	6772	Outside	3412.00	
Perforations	8.00			3420.00	
Bullnose	4.00			3424.00	78.00 Bottom Packers & Anchor

Total Tool Length: 99.00



**TRILOBITE
TESTING, INC.**

DRILL STEM TEST REPORT

FLUID SUMMARY

Gore Oil Company

29-9s 17w Rooks,KS

PO Box 2757
Wichita,KS 67202

Harry #1

Job Ticket:

DST#: 1

ATTN: Al Downing

Test Start: 2012.10.23 @ 16:54:38

Mud and Cushion Information

Mud Type: Gel Chem

Cushion Type:

Oil API:

deg API

Mud Weight: 9.00 lb/gal

Cushion Length:

ft

Water Salinity:

ppm

Viscosity: 57.00 sec/qt

Cushion Volume:

bbbl

Water Loss: 9.08 in³

Gas Cushion Type:

Resistivity: ohm.m

Gas Cushion Pressure:

psig

Salinity: ppm

Filter Cake: inches

Recovery Information

Recovery Table

Length ft	Description	Volume bbl
3.00	mud	0.042

Total Length: 3.00 ft Total Volume: 0.042 bbl

Num Fluid Samples: 0

Num Gas Bombs: 0

Serial #:

Laboratory Name:

Laboratory Location:

Recovery Comments:

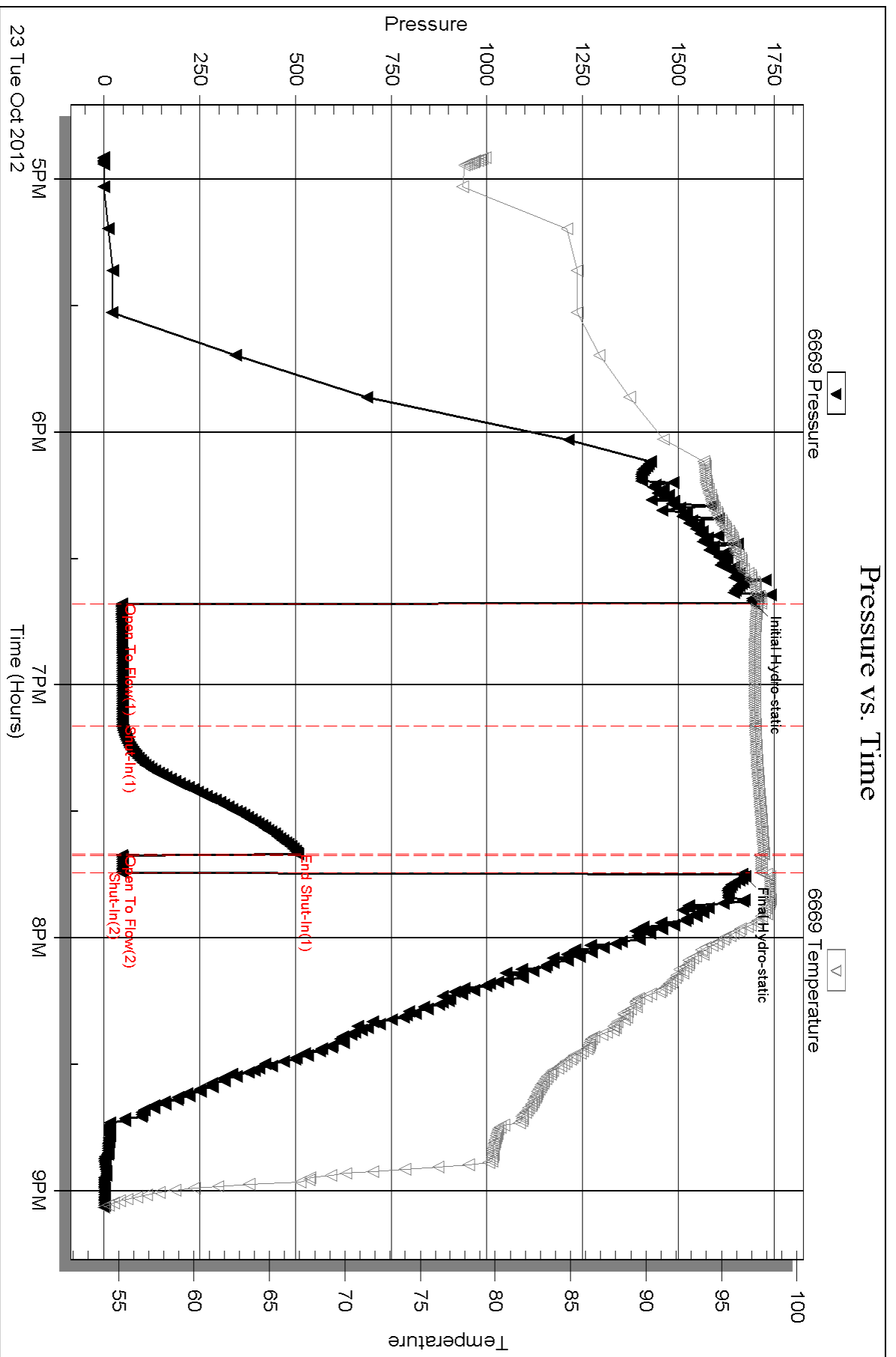
Serial #: 6669

Inside

Gore Oil Company

Harry #1

DST Test Number: 1



Triobite Testing, Inc

Ref. No:

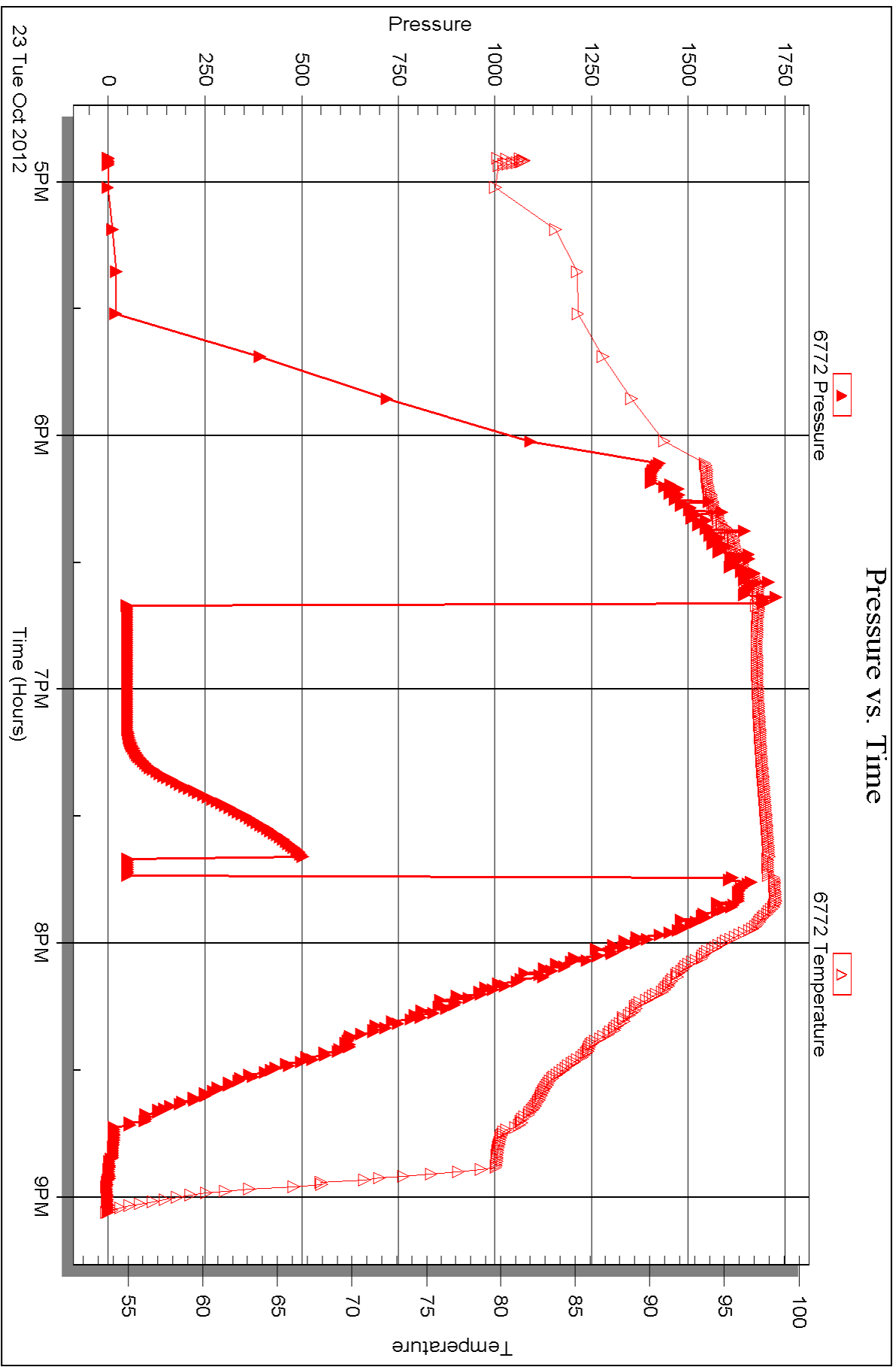
Printed: 2012.10.26 @ 08:48:06

Serial #: 6772

Outside Gore Oil Company

Harry #1

DST Test Number: 1





DRILL STEM TEST REPORT

Prepared For: **Gore Oil Company**

PO Box 2757
Wichita, KS 67202

ATTN: Al Downing

Harry #1

29-9s 17w Rooks, KS

Start Date: 2012.10.24 @ 07:46:45

End Date: 2012.10.24 @ 11:55:45

Job Ticket #: 50802 DST #: 2

Trilobite Testing, Inc

PO Box 362 Hays, KS 67601

ph: 785-625-4778 fax: 785-625-5620

Printed: 2012.10.26 @ 08:47:16



TRILOBITE TESTING, INC.

DRILL STEM TEST REPORT

Gore Oil Company

29-9s 17w Rooks, KS

PO Box 2757
Wichita, KS 67202

Harry #1

ATTN: Al Downing

Job Ticket: 50802

DST#: 2

Test Start: 2012.10.24 @ 07:46:45

GENERAL INFORMATION:

Formation: **Lansing H-I**

Deviated: No Whipstock: ft (KB)

Time Tool Opened: 09:28:30

Time Test Ended: 11:55:45

Test Type: Conventional Bottom Hole (Reset)

Tester: Paul Simpson

Unit No: 64

Interval: 3447.00 ft (KB) To 3500.00 ft (KB) (TVD)

Reference Elevations: 2139.00 ft (KB)

Total Depth: 3500.00 ft (KB) (TVD)

2131.00 ft (CF)

Hole Diameter: 7.88 inches Hole Condition: Poor

KB to GR/CF: 8.00 ft

Serial #: 6669

Inside

Press @ Run Depth: 33.42 psig @ 3483.00 ft (KB)

Capacity: 8000.00 psig

Start Date: 2012.10.24

End Date:

2012.10.24

Last Calib.: 2012.10.24

Start Time: 07:46:50

End Time:

11:55:45

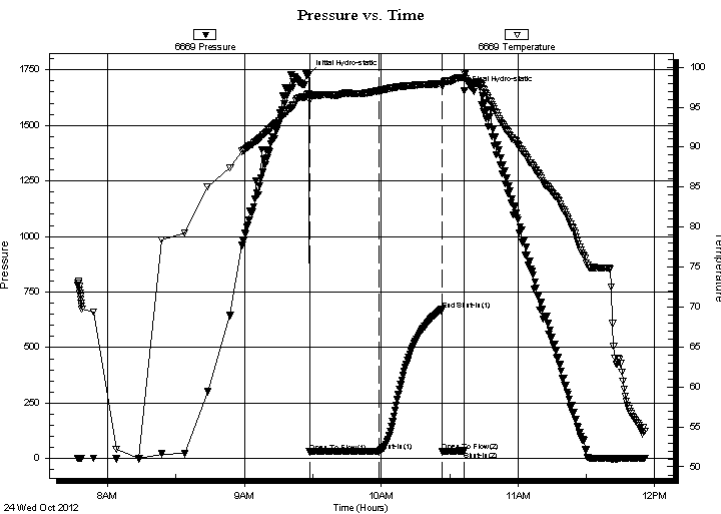
Time On Btm: 2012.10.24 @ 09:28:15

Time Off Btm: 2012.10.24 @ 10:36:30

TEST COMMENT: IF 30- weak 1/4" blow died in 25 minutes

ISI 30

FF



PRESSURE SUMMARY

Time (Min.)	Pressure (psig)	Temp (deg F)	Annotation
0	1728.60	96.67	Initial Hydro-static
1	30.27	95.81	Open To Flow (1)
31	33.42	97.07	Shut-In(1)
59	670.81	97.93	End Shut-In(1)
59	33.95	97.73	Open To Flow (2)
68	34.86	98.70	Shut-In(2)
69	1655.98	99.36	Final Hydro-static

Recovery

Length (ft)	Description	Volume (bbl)
10.00	mud w ith oil spots in tool	0.14

* Recovery from multiple tests

Gas Rates

	Choke (inches)	Pressure (psig)	Gas Rate (Mcf/d)



**TRILOBITE
TESTING, INC.**

DRILL STEM TEST REPORT

TOOL DIAGRAM

Gore Oil Company

29-9s 17w Rooks,KS

PO Box 2757
Wichita,KS 67202

Harry #1

Job Ticket: 50802

DST#: 2

ATTN: Al Downing

Test Start: 2012.10.24 @ 07:46:45

Tool Information

Drill Pipe:	Length: 3434.00 ft	Diameter: 3.80 inches	Volume: 48.17 bbl	Tool Weight: 2200.00 lb
Heavy Wt. Pipe:	Length: 0.00 ft	Diameter: 0.00 inches	Volume: 0.00 bbl	Weight set on Packer: 20000.00 lb
Drill Collar:	Length: 0.00 ft	Diameter: 2.25 inches	Volume: 0.00 bbl	Weight to Pull Loose: 55000.00 lb
			<u>Total Volume: 48.17 bbl</u>	Tool Chased ft
Drill Pipe Above KB:	8.00 ft			String Weight: Initial 50000.00 lb
Depth to Top Packer:	3447.00 ft			Final 50000.00 lb
Depth to Bottom Packer:	ft			
Interval between Packers:	53.00 ft			
Tool Length:	74.00 ft			
Number of Packers:	2	Diameter: 6.75 inches		
Tool Comments:				

Tool Description	Length (ft)	Serial No.	Position	Depth (ft)	Accum. Lengths
------------------	-------------	------------	----------	------------	----------------

Change Over Sub	1.00			3427.00	
Shut In Tool	5.00			3432.00	
Hydraulic tool	5.00			3437.00	
Packer	5.00			3442.00	21.00 Bottom Of Top Packer
Packer	5.00			3447.00	
Stubb	1.00			3448.00	
perforations	2.00			3450.00	
Change Over Sub	1.00			3451.00	
Blank Spacing	31.00			3482.00	
change Over Sub	1.00			3483.00	
Recorder	0.00	6669	Inside	3483.00	
Recorder	0.00	6772	Outside	3483.00	
Perforations	13.00			3496.00	
Bullnose	4.00			3500.00	53.00 Bottom Packers & Anchor

Total Tool Length: 74.00



**TRILOBITE
TESTING, INC.**

DRILL STEM TEST REPORT

FLUID SUMMARY

Gore Oil Company

29-9s 17w Rooks,KS

PO Box 2757
Wichita,KS 67202

Harry #1

Job Ticket: 50802

DST#: 2

ATTN: Al Downing

Test Start: 2012.10.24 @ 07:46:45

Mud and Cushion Information

Mud Type: Gel Chem

Cushion Type:

Oil API:

deg API

Mud Weight: 9.00 lb/gal

Cushion Length:

ft

Water Salinity:

ppm

Viscosity: 58.00 sec/qt

Cushion Volume:

bbbl

Water Loss: 9.08 in³

Gas Cushion Type:

Resistivity: ohm.m

Gas Cushion Pressure:

psig

Salinity: ppm

Filter Cake: inches

Recovery Information

Recovery Table

Length ft	Description	Volume bbl
10.00	mud w ith oil spots in tool	0.140

Total Length: 10.00 ft Total Volume: 0.140 bbl

Num Fluid Samples: 0

Num Gas Bombs: 0

Serial #:

Laboratory Name:

Laboratory Location:

Recovery Comments:

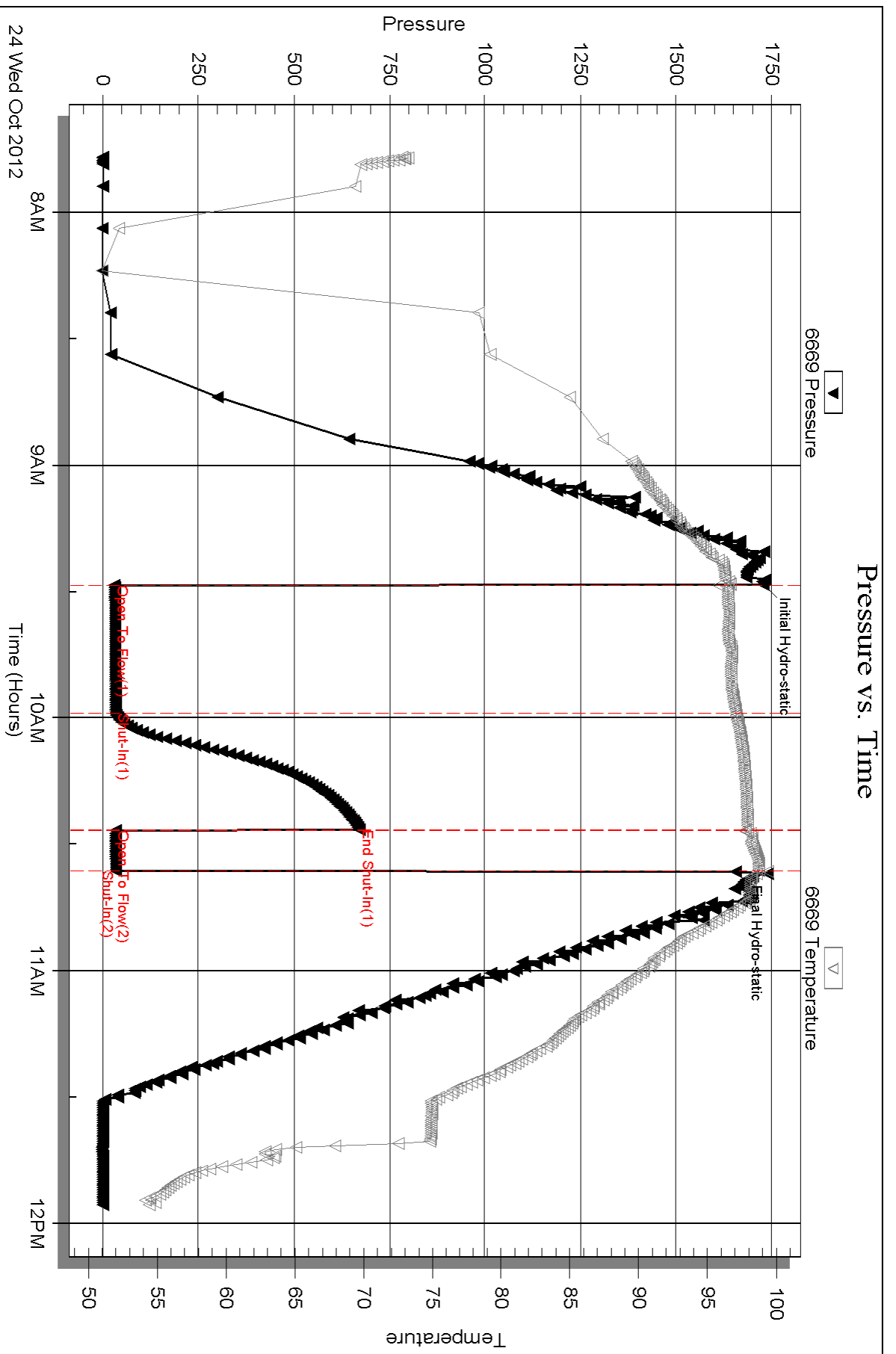
Serial #: 6669

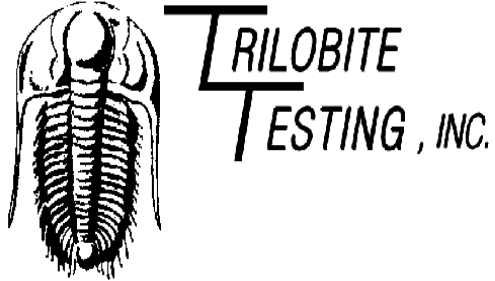
Inside

Gore Oil Company

Harry #1

DST Test Number: 2





DRILL STEM TEST REPORT

Prepared For: **Gore Oil Company**

PO Box 2757
Wichita, KS 67202

ATTN: Al Downing

Harry #1

29-9s 17w Rooks, KS

Start Date: 2012.10.24 @ 21:30:04

End Date: 2012.10.25 @ 04:05:34

Job Ticket #: 50803 DST #: 3

Trilobite Testing, Inc

PO Box 362 Hays, KS 67601

ph: 785-625-4778 fax: 785-625-5620

Printed: 2012.10.26 @ 08:46:10



TRILOBITE TESTING, INC.

DRILL STEM TEST REPORT

Gore Oil Company

29-9s 17w Rooks,KS

PO Box 2757
Wichita,KS 67202

Harry #1

ATTN: Al Downing

Job Ticket: 50803

DST#: 3

Test Start: 2012.10.24 @ 21:30:04

GENERAL INFORMATION:

Formation: **Lansing I-L**

Deviated: No Whipstock: ft (KB)

Time Tool Opened: 23:22:19

Time Test Ended: 04:05:34

Test Type: Conventional Bottom Hole (Reset)

Tester: Paul Simpson

Unit No: 64

Interval: 3478.00 ft (KB) To 3567.00 ft (KB) (TVD)

Reference Elevations: 2139.00 ft (KB)

Total Depth: 3567.00 ft (KB) (TVD)

2131.00 ft (CF)

Hole Diameter: 7.88 inches Hole Condition: Poor

KB to GR/CF: 8.00 ft

Serial #: 6669

Inside

Press @ Run Depth: 72.37 psig @ 3549.00 ft (KB)

Capacity: 8000.00 psig

Start Date: 2012.10.24

End Date:

2012.10.25

Last Calib.: 2012.10.24

Start Time: 21:30:09

End Time:

04:05:33

Time On Btm: 2012.10.24 @ 23:22:04

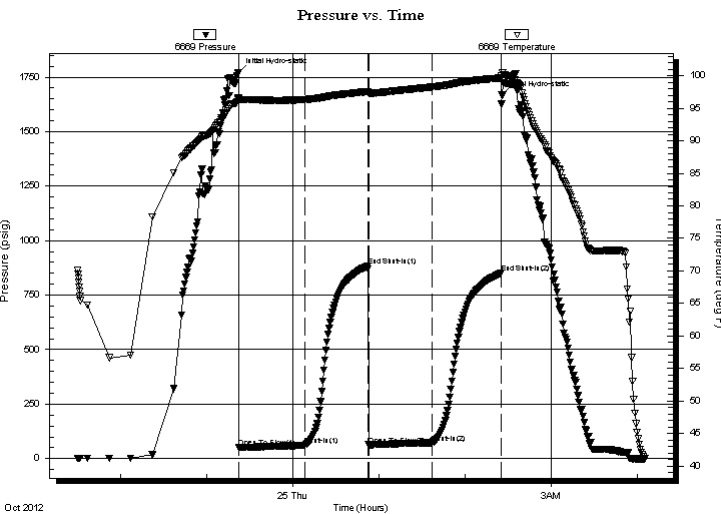
Time Off Btm: 2012.10.25 @ 02:25:34

TEST COMMENT: IF 45- weak blow built to 2"

ISI 45

FF 45 weak blow built to 2"

FSI 45



PRESSURE SUMMARY

Time (Min.)	Pressure (psig)	Temp (deg F)	Annotation
0	1772.11	96.54	Initial Hydro-static
1	50.41	96.23	Open To Flow (1)
47	61.14	96.35	Shut-In(1)
90	883.78	97.57	End Shut-In(1)
91	63.03	97.34	Open To Flow (2)
135	72.37	98.26	Shut-In(2)
183	850.87	99.67	End Shut-In(2)
184	1667.76	100.02	Final Hydro-static

Recovery

Length (ft)	Description	Volume (bbl)
60.00	HOCM 30% o 70% m	0.84

* Recovery from multiple tests

Gas Rates

Choke (inches)	Pressure (psig)	Gas Rate (Mcf/d)



**TRILOBITE
TESTING, INC.**

DRILL STEM TEST REPORT

TOOL DIAGRAM

Gore Oil Company

29-9s 17w Rooks,KS

PO Box 2757
Wichita,KS 67202

Harry #1

Job Ticket: 50803

DST#: 3

ATTN: Al Downing

Test Start: 2012.10.24 @ 21:30:04

Tool Information

Drill Pipe:	Length: 3466.00 ft	Diameter: 3.80 inches	Volume: 48.62 bbl	Tool Weight:	2200.00 lb
Heavy Wt. Pipe:	Length: 0.00 ft	Diameter: 0.00 inches	Volume: 0.00 bbl	Weight set on Packer:	20000.00 lb
Drill Collar:	Length: 0.00 ft	Diameter: 2.25 inches	Volume: 0.00 bbl	Weight to Pull Loose:	55000.00 lb
			<u>Total Volume: 48.62 bbl</u>	Tool Chased	ft
Drill Pipe Above KB:	9.00 ft			String Weight: Initial	50000.00 lb
Depth to Top Packer:	3478.00 ft			Final	50000.00 lb
Depth to Bottom Packer:	ft				
Interval between Packers:	88.00 ft				
Tool Length:	109.00 ft				
Number of Packers:	2	Diameter: 6.75 inches			
Tool Comments:					

Tool Description	Length (ft)	Serial No.	Position	Depth (ft)	Accum. Lengths
------------------	-------------	------------	----------	------------	----------------

Change Over Sub	1.00			3458.00	
Shut In Tool	5.00			3463.00	
Hydraulic tool	5.00			3468.00	
Packer	5.00			3473.00	21.00 Bottom Of Top Packer
Packer	5.00			3478.00	
Stubb	1.00			3479.00	
perforations	7.00			3486.00	
Change Over Sub	1.00			3487.00	
Blank Spacing	61.00			3548.00	
change Over Sub	1.00			3549.00	
Recorder	0.00	6669	Inside	3549.00	
Recorder	0.00	6772	Outside	3549.00	
Perforations	13.00			3562.00	
Bullnose	4.00			3566.00	88.00 Bottom Packers & Anchor

Total Tool Length: 109.00



**TRILOBITE
TESTING, INC.**

DRILL STEM TEST REPORT

FLUID SUMMARY

Gore Oil Company

29-9s 17w Rooks,KS

PO Box 2757
Wichita,KS 67202

Harry #1

Job Ticket: 50803

DST#: 3

ATTN: Al Downing

Test Start: 2012.10.24 @ 21:30:04

Mud and Cushion Information

Mud Type: Gel Chem

Cushion Type:

Oil API:

deg API

Mud Weight: 9.00 lb/gal

Cushion Length:

ft

Water Salinity:

ppm

Viscosity: 56.00 sec/qt

Cushion Volume:

bbbl

Water Loss: 8.79 in³

Gas Cushion Type:

Resistivity: ohm.m

Gas Cushion Pressure:

psig

Salinity: ppm

Filter Cake: inches

Recovery Information

Recovery Table

Length ft	Description	Volume bbl
60.00	HOCM 30% o 70%m	0.842

Total Length: 60.00 ft Total Volume: 0.842 bbl

Num Fluid Samples: 0

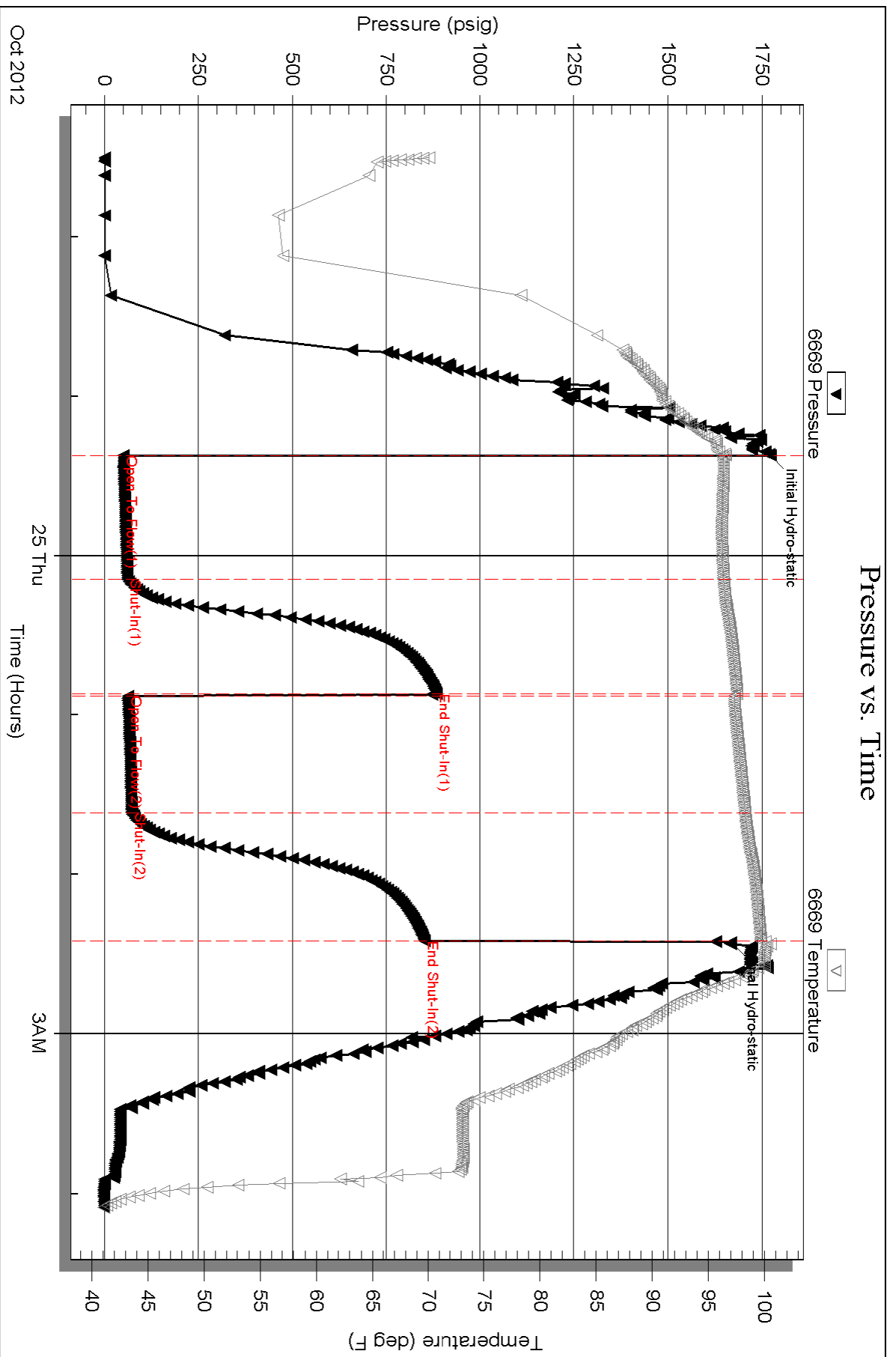
Num Gas Bombs: 0

Serial #:

Laboratory Name:

Laboratory Location:

Recovery Comments:





TRILOBITE TESTING INC.

1515 Commerce Parkway • Hays, Kansas 67601

Test Ticket

NO. 50801

4/10

Well Name & No. Harry #1 Test No. 1 Date 10/23/12
 Company Gore Oil Company Elevation 2139 KB 2131 GL
 Address Box 2757 Wichita KS 67202
 Co. Rep / Geo. Al Downing Rig Maverick 108
 Location: Sec. 29 Twp. 9S Rge. 17W Co. Rooks State Ks

Interval Tested 3346-3425 Zone Tested Lansing C
 Anchor Length 79 Drill Pipe Run _____ Mud Wt. 8.9
 Top Packer Depth 3341 Drill Collars Run _____ Vis 5.5
 Bottom Packer Depth 3346 Wt. Pipe Run _____ WL 9.0
 Total Depth 3425 Chlorides _____ ppm System LCM _____
 Blow Description Wentc blow died in 25 minutes

FB - no blow

Rec	Feet of	%gas	%oil	%water	%mud
<u>3</u>	<u>Mud</u>				
Rec	Feet of	%gas	%oil	%water	%mud
Rec	Feet of	%gas	%oil	%water	%mud
Rec	Feet of	%gas	%oil	%water	%mud
Rec	Feet of	%gas	%oil	%water	%mud

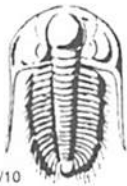
Rec Total _____ BHT 9.7 Gravity _____ API RW _____ @ _____ °F Chlorides _____ ppm

(A) Initial Hydrostatic 1699 Test 1150 T-On Location 1630
 (B) First Initial Flow 46 Jars _____ T-Started 1654
 (C) First Final Flow 47 Safety Joint _____ T-Open 1840
 (D) Initial Shut-In 507 Circ Sub _____ T-Pulled 1944
 (E) Second Initial Flow 46 Hourly Standby _____ T-Out 2104
 (F) Second Final Flow 49 Mileage 62 RT 96.10 Comments _____
 (G) Final Shut-In _____ Sampler _____
 (H) Final Hydrostatic 1667 Straddle _____
 Ruined Shale Packer _____
 Shale Packer _____ Ruined Packer _____
 Extra Packer _____ Extra Copies _____
 Initial Open 30 Extra Recorder _____ Sub Total 0
 Initial Shut-In 30 Day Standby _____ Total 1246.10
 Final Flow 5 Accessibility _____ MP/DST Disc't _____
 Final Shut-In _____ Sub Total 1246.10

Approved By _____

Our Representative Paul Simpson

Trilobite Testing Inc. shall not be liable for damaged of any kind of the property or personnel of the one for whom a test is made, or for any loss suffered or sustained, directly or indirectly, through the use of its equipment, or its statements or opinion concerning the results of any test, tools lost or damaged in the hole shall be paid for at cost by the party for whom the test is made.



TRILOBITE TESTING INC.

1515 Commerce Parkway • Hays, Kansas 67601

Test Ticket

NO. 50802

4/10

Well Name & No. Harry #1 Test No. 2 Date 10/24/12
 Company Core Oil Company Elevation 2135 KB 2131 GL
 Address _____
 Co. Rep / Geo. A1 Downing Rig Makenick 108
 Location: Sec. 29 Twp. 9S Rge. 12W Co. Rooks State KY

Interval Tested 3447-3500 Zone Tested Lansing H-I
 Anchor Length 53 Drill Pipe Run 3434 Mud Wt. 9.0
 Top Packer Depth 3442 Drill Collars Run _____ Vis 58
 Bottom Packer Depth 3445 Wt. Pipe Run _____ WL 9.1
 Total Depth 3500 Chlorides _____ ppm System LCM _____
 Blow Description Weak 1/4" blow died in 25 minutes

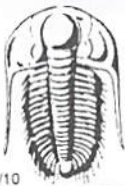
Rec	Feet of	%gas	%oil	%water	%mud
<u>10</u>	<u>Mud w/oil spots in tub</u>				
Rec	Feet of	%gas	%oil	%water	%mud
Rec	Feet of	%gas	%oil	%water	%mud
Rec	Feet of	%gas	%oil	%water	%mud
Rec	Feet of	%gas	%oil	%water	%mud

Rec Total _____ BHT 97 Gravity _____ API RW _____ @ _____ °F Chlorides _____ ppm

(A) Initial Hydrostatic 1728 Test 1150 T-On Location 0730
 (B) First Initial Flow 30 Jars _____ T-Started 0746
 (C) First Final Flow 33 Safety Joint _____ T-Open 0928
 (D) Initial Shut-In 671 Circ Sub _____ T-Pulled 1036
 (E) Second Initial Flow 34 Hourly Standby _____ T-Out 1155
 (F) Second Final Flow 34 Mileage 62 96.10 Comments _____
 (G) Final Shut-In _____ Sampler _____
 (H) Final Hydrostatic 1656 Straddle _____
 Shale Packer _____ Ruined Shale Packer _____
 Extra Packer _____ Ruined Packer _____
 Extra Recorder _____ Sub Total 0
 Day Standby _____ Total 1246.10
 Accessibility _____ MP/DST Disc't _____
 Sub Total 1246.10

Approved By _____ Our Representative Paul Simpson

Trilobite Testing Inc. shall not be liable for damaged of any kind of the property or personnel of the one for whom a test is made, or for any loss suffered or sustained, directly or indirectly, through the use of its equipment, or its statements or opinion concerning the results of any test, tools lost or damaged in the hole shall be paid for at cost by the party for whom the test is made.



TRILOBITE TESTING INC.

1515 Commerce Parkway • Hays, Kansas 67601

Test Ticket

NO. 50803

4/10

Well Name & No. Harry #1 Test No. 3 Date 10/24/12
 Company Gore Oil Company Elevation 2139 KB 2131 GL
 Address _____ Rig Maverick 108
 Co. Rep / Geo. A J Downing Rge. 17W Co. Rooks State KS
 Location: Sec. 29 Twp. 9S

Interval Tested 3478-3567 Zone Tested LKC 1-2
 Anchor Length 89 Drill Pipe Run 3466 Mud Wt. 9.11
 Top Packer Depth 3473 Drill Collars Run _____ Vis 56
 Bottom Packer Depth 3478 Wt. Pipe Run _____ WL 8.8
 Total Depth 3567 Chlorides _____ ppm System LCM _____
 Blow Description 1/2" blow building to 2"

FF - surface blow building to 2"

Rec	Feet of	%gas	%oil	%water	%mud
<u>60</u>	<u>110cm</u>		<u>30</u>		<u>90</u>
Rec	Feet of	%gas	%oil	%water	%mud
Rec	Feet of	%gas	%oil	%water	%mud
Rec	Feet of	%gas	%oil	%water	%mud
Rec	Feet of	%gas	%oil	%water	%mud

Rec Total _____ BHT _____ Gravity _____ API RW _____ @ _____ °F Chlorides _____ ppm

(A) Initial Hydrostatic 1572 Test 1150 _____ T-On Location _____
 (B) First Initial Flow 90 Jars _____ T-Started 2130
 (C) First Final Flow 61 Safety Joint _____ T-Open 2322
 (D) Initial Shut-In 884 Circ Sub _____ T-Pulled 0222
 (E) Second Initial Flow 62 Hourly Standby _____ T-Out _____
 (F) Second Final Flow 52 Mileage 62 RT 96.10 _____ Comments _____
 (G) Final Shut-In 851 Sampler _____
 (H) Final Hydrostatic 1667 Straddle _____
 Shale Packer _____
 Extra Packer _____
 Extra Recorder _____
 Day Standby _____
 Accessibility _____

Initial Open 45 Ruined Shale Packer _____
 Initial Shut-In 45 Ruined Packer _____
 Final Flow 45 Extra Copies _____
 Final Shut-In 45 Sub Total 0
 Total 1246.10
 MP/DST Disc't _____
 Sub Total 1246.10