



## DRILL STEM TEST REPORT

Prepared For: **Jason Oil, Co, LLC**

PO Box 701  
Russell KS 67665

ATTN: Jeff Lawler

**J. Radke #5**

**36-14s-14w Russell,KS**

Start Date: 2013.03.24 @ 01:00:00

End Date: 2013.03.24 @ 08:57:00

Job Ticket #: 52162                      DST #: 1

Trilobite Testing, Inc  
PO Box 362 Hays, KS 67601  
ph: 785-625-4778 fax: 785-625-5620

Printed: 2013.03.27 @ 10:50:37



**TRILOBITE TESTING, INC.**

# DRILL STEM TEST REPORT

Jason Oil, Co, LLC

**36-14s-14w Russell,KS**

PO Box 701  
Russell KS 67665

**J. Radke #5**

Job Ticket: 52162

**DST#: 1**

ATTN: Jeff Lawler

Test Start: 2013.03.24 @ 01:00:00

## GENERAL INFORMATION:

Formation: **Toronto-LKC "C"**  
 Deviated: No Whipstock: ft (KB)  
 Test Type: Conventional Bottom Hole (Initial)  
 Time Tool Opened: 03:56:30 Tester: Cody Bloedorn  
 Time Test Ended: 08:57:00 Unit No: 59  
 Interval: **2830.00 ft (KB) To 2940.00 ft (KB) (TVD)** Reference Elevations: 1755.00 ft (KB)  
 Total Depth: 2940.00 ft (KB) (TVD) 1750.00 ft (CF)  
 Hole Diameter: 7.88 inches Hole Condition: Fair KB to GR/CF: 5.00 ft

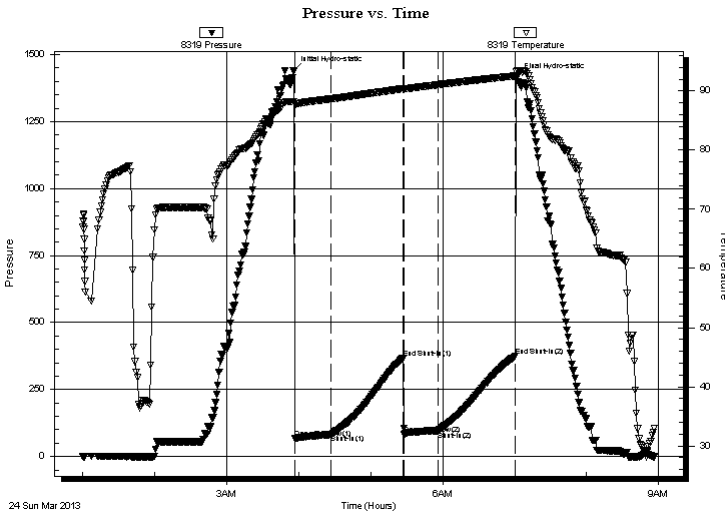
## Serial #: 8319

Inside

Press @ Run Depth: 95.75 psig @ 2931.00 ft (KB) Capacity: 8000.00 psig  
 Start Date: 2013.03.24 End Date: 2013.03.24 Last Calib.: 2013.03.24  
 Start Time: 01:00:05 End Time: 08:56:59 Time On Btm: 2013.03.24 @ 03:56:00  
 Time Off Btm: 2013.03.24 @ 07:01:30

TEST COMMENT: 30 - IF- 6" blow  
 60 - IS- No return  
 30 - FF- B.O.B. in 12 Minutes  
 60 - FS- Surface return

## PRESSURE SUMMARY



Time (Min.)	Pressure (psig)	Temp (deg F)	Annotation
0	1440.77	88.22	Initial Hydro-static
1	67.14	87.85	Open To Flow (1)
31	81.50	88.67	Shut-In(1)
91	367.12	90.40	End Shut-In(1)
92	84.20	90.35	Open To Flow (2)
120	95.75	91.06	Shut-In(2)
185	373.85	92.56	End Shut-In(2)
186	1414.01	93.28	Final Hydro-static

## Recovery

Length (ft)	Description	Volume (bbl)
62.00	VSOCM, 5%O, 95%M	0.30
62.00	GOCM, 20%G, 20%O, 60%M	0.30
0.00	248' of G.I.P.	0.00

## Gas Rates

	Choke (inches)	Pressure (psig)	Gas Rate (Mcf/d)





**TRILOBITE  
TESTING, INC.**

# DRILL STEM TEST REPORT

**TOOL DIAGRAM**

Jason Oil, Co, LLC

**36-14s-14w Russell,KS**

PO Box 701  
Russell KS 67665

**J. Radke #5**

Job Ticket: 52162

**DST#: 1**

ATTN: Jeff Lawler

Test Start: 2013.03.24 @ 01:00:00

## Tool Information

Drill Pipe:	Length: 2709.00 ft	Diameter: 3.80 inches	Volume: 38.00 bbl	Tool Weight: 2000.00 lb
Heavy Wt. Pipe:	Length: 0.00 ft	Diameter: 0.00 inches	Volume: 0.00 bbl	Weight set on Packer: 30000.00 lb
Drill Collar:	Length: 124.00 ft	Diameter: 2.25 inches	Volume: 0.61 bbl	Weight to Pull Loose: 59000.00 lb
			<u>Total Volume: 38.61 bbl</u>	Tool Chased 0.00 ft
Drill Pipe Above KB:	23.00 ft			String Weight: Initial 55000.00 lb
Depth to Top Packer:	2830.00 ft			Final 55000.00 lb
Depth to Bottom Packer:	ft			
Interval between Packers:	110.00 ft			
Tool Length:	130.00 ft			
Number of Packers:	2	Diameter: 6.75 inches		

Tool Comments:

Tool Description	Length (ft)	Serial No.	Position	Depth (ft)	Accum. Lengths
------------------	-------------	------------	----------	------------	----------------

Change Over Sub	1.00			2811.00	
Shut In Tool	5.00			2816.00	
Hydraulic tool	5.00			2821.00	
Packer	4.00			2825.00	20.00 Bottom Of Top Packer
Packer	5.00			2830.00	
Stubb	1.00			2831.00	
Perforations	5.00			2836.00	
Change Over Sub	1.00			2837.00	
Drill Pipe	93.00			2930.00	
Change Over Sub	1.00			2931.00	
Recorder	0.00	8319	Inside	2931.00	
Recorder	0.00	8166	Outside	2931.00	
Perforations	6.00			2937.00	
Bullnose	3.00			2940.00	110.00 Bottom Packers & Anchor

**Total Tool Length: 130.00**



**TRILOBITE  
TESTING, INC.**

**DRILL STEM TEST REPORT**

**FLUID SUMMARY**

Jason Oil, Co, LLC

**36-14s-14w Russell,KS**

PO Box 701  
Russell KS 67665

**J. Radke #5**

Job Ticket: 52162

**DST#: 1**

ATTN: Jeff Lawler

Test Start: 2013.03.24 @ 01:00:00

**Mud and Cushion Information**

Mud Type: Gel Chem

Cushion Type:

Oil API:

deg API

Mud Weight: 9.00 lb/gal

Cushion Length:

ft

Water Salinity:

ppm

Viscosity: 44.00 sec/qt

Cushion Volume:

bbbl

Water Loss: 7.98 in<sup>3</sup>

Gas Cushion Type:

Resistivity: ohm.m

Gas Cushion Pressure:

psig

Salinity: 3000.00 ppm

Filter Cake: inches

**Recovery Information**

Recovery Table

Length ft	Description	Volume bbl
62.00	VSOCM, 5%O, 95%M	0.305
62.00	GOCM, 20%G, 20%O, 60%M	0.305
0.00	248' of G.I.P.	0.000

Total Length: 124.00 ft

Total Volume: 0.610 bbl

Num Fluid Samples: 0

Num Gas Bombs: 0

Serial #:

Laboratory Name:

Laboratory Location:

Recovery Comments:

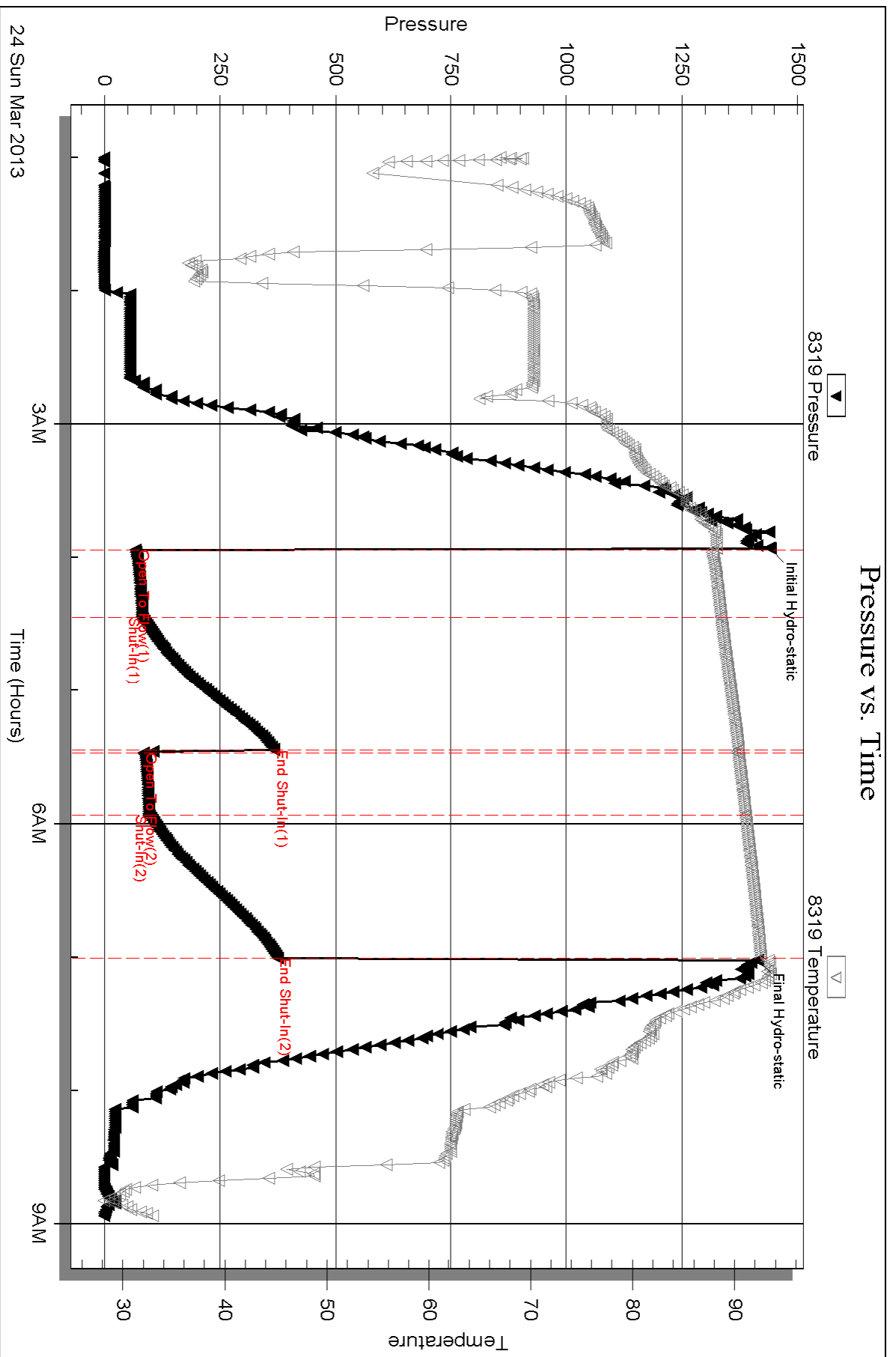
Serial #: 8319

Inside

Jason Oil, Co, LLC

J. Radtke #5

DST Test Number: 1



Triobite Testing, Inc

Ref. No: 52162

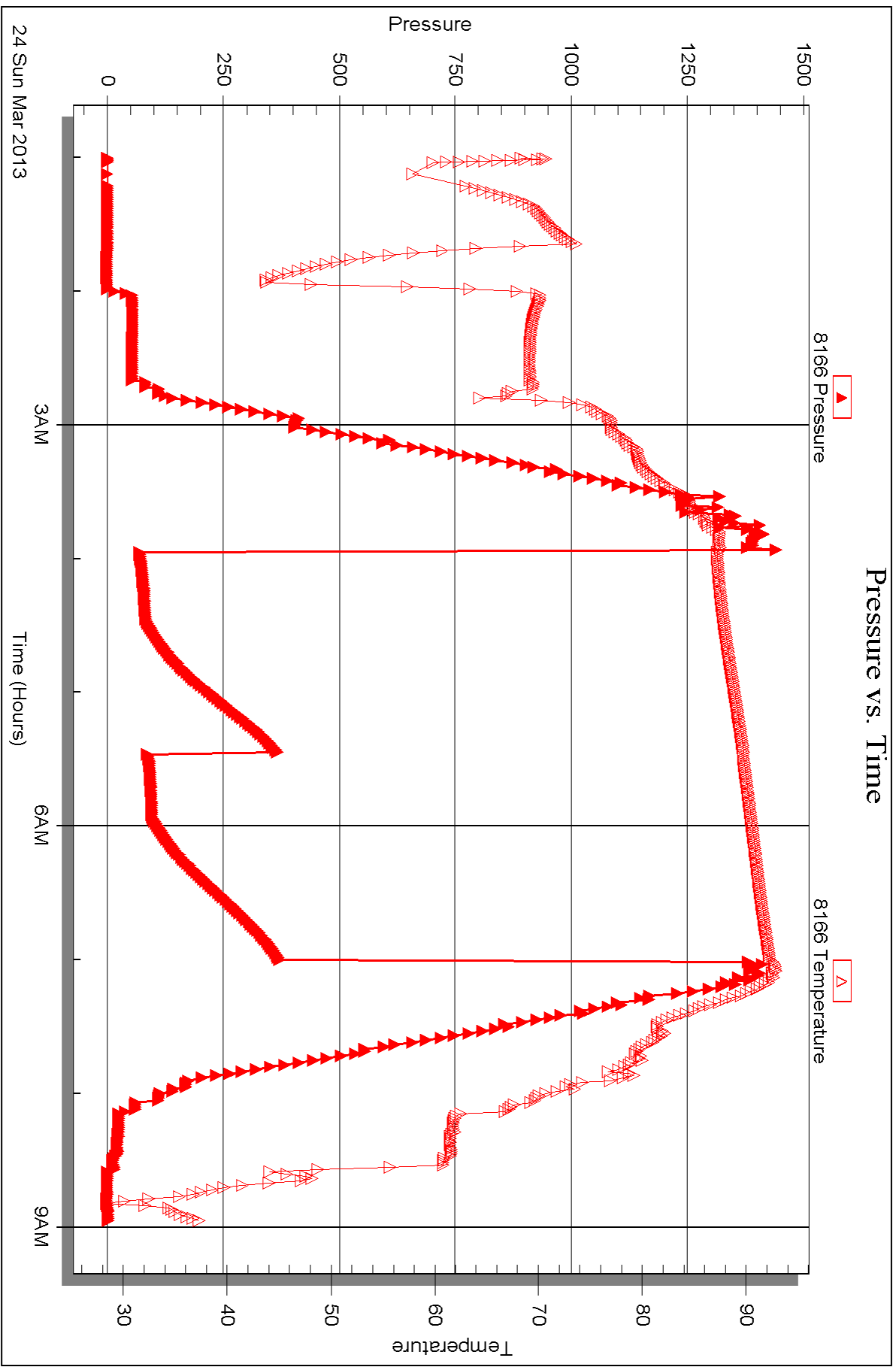
Printed: 2013.03.27 @ 10:50:40

Serial #: 8166

Outside Jason Oil, Co, LLC

J. Radtke #5

DST Test Number: 1



Triobite Testing, Inc

Ref. No: 52162

Printed: 2013.03.27 @ 10:50:40



## DRILL STEM TEST REPORT

Prepared For: **Jason Oil, Co, LLC**

PO Box 701  
Russell KS 67665

ATTN: Jeff Lawler

**J. Radke #5**

**36-14s-14w Russell,KS**

Start Date: 2013.03.25 @ 04:39:00

End Date: 2013.03.25 @ 11:53:30

Job Ticket #: 52163                      DST #: 2

Trilobite Testing, Inc  
PO Box 362 Hays, KS 67601  
ph: 785-625-4778 fax: 785-625-5620

Printed: 2013.03.27 @ 10:49:53





**TRILOBITE TESTING, INC.**

# DRILL STEM TEST REPORT

Jason Oil, Co, LLC

**36-14s-14w Russell, KS**

PO Box 701  
Russell KS 67665

**J. Radke #5**

Job Ticket: 52163

**DST#: 2**

ATTN: Jeff Lawler

Test Start: 2013.03.25 @ 04:39:00

## GENERAL INFORMATION:

Formation: **Gorham Sand**

Deviated: No Whipstock: ft (KB)

Time Tool Opened: 06:47:00

Time Test Ended: 11:53:30

Test Type: Conventional Bottom Hole (Reset)

Tester: Cody Bloedorn

Unit No: 59

**Interval: 3149.00 ft (KB) To 3179.00 ft (KB) (TVD)**

Reference Elevations: 1755.00 ft (KB)

Total Depth: 3179.00 ft (KB) (TVD)

1750.00 ft (CF)

Hole Diameter: 7.88 inches Hole Condition: Fair

KB to GR/CF: 5.00 ft

**Serial #: 8319 Inside**

Press @ Run Depth: 35.00 psig @ 3155.00 ft (KB)

Capacity: 8000.00 psig

Start Date: 2013.03.25

End Date:

2013.03.25

Last Calib.:

2013.03.25

Start Time: 04:39:05

End Time:

11:53:29

Time On Btm:

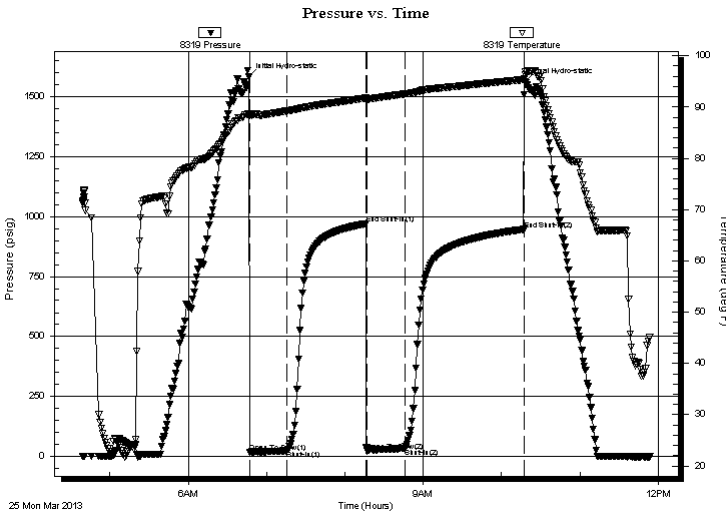
2013.03.25 @ 06:46:30

Time Off Btm:

2013.03.25 @ 10:18:00

**TEST COMMENT:** 30 - IF-7" blow  
60 - IS- No return  
30 - FF- 5" blow  
90 - FS- No return

## PRESSURE SUMMARY



Time (Min.)	Pressure (psig)	Temp (deg F)	Annotation
0	1582.08	88.68	Initial Hydro-static
1	17.40	88.30	Open To Flow (1)
29	23.61	89.23	Shut-In(1)
90	968.85	91.75	End Shut-In(1)
91	23.06	91.56	Open To Flow (2)
120	35.00	92.57	Shut-In(2)
211	946.90	95.36	End Shut-In(2)
212	1560.96	96.31	Final Hydro-static

## Recovery

Length (ft)	Description	Volume (bbl)
35.00	GMCO, 10%G, 30%M, 60%O	0.49
10.00	GO, 10%G, 90%O	0.14
0.00	124' of G.I.P.	0.00

\* Recovery from multiple tests

## Gas Rates

	Choke (inches)	Pressure (psig)	Gas Rate (Mcf/d)





**TRILOBITE  
TESTING, INC.**

# DRILL STEM TEST REPORT

**TOOL DIAGRAM**

Jason Oil, Co, LLC

**36-14s-14w Russell,KS**

PO Box 701  
Russell KS 67665

**J. Radke #5**

Job Ticket: 52163

**DST#: 2**

ATTN: Jeff Lawler

Test Start: 2013.03.25 @ 04:39:00

**Tool Information**

Drill Pipe:	Length: 3151.00 ft	Diameter: 3.80 inches	Volume: 44.20 bbl	Tool Weight: 2000.00 lb
Heavy Wt. Pipe:	Length: 0.00 ft	Diameter: 0.00 inches	Volume: 0.00 bbl	Weight set on Packer: 30000.00 lb
Drill Collar:	Length: 0.00 ft	Diameter: 2.25 inches	Volume: 0.00 bbl	Weight to Pull Loose: 48000.00 lb
			<u>Total Volume: 44.20 bbl</u>	Tool Chased 0.00 ft
Drill Pipe Above KB:	22.00 ft			String Weight: Initial 44000.00 lb
Depth to Top Packer:	3149.00 ft			Final 44000.00 lb
Depth to Bottom Packer:	ft			
Interval between Packers:	30.00 ft			
Tool Length:	50.00 ft			
Number of Packers:	2	Diameter: 6.75 inches		

Tool Comments:

<b>Tool Description</b>	<b>Length (ft)</b>	<b>Serial No.</b>	<b>Position</b>	<b>Depth (ft)</b>	<b>Accum. Lengths</b>
-------------------------	--------------------	-------------------	-----------------	-------------------	-----------------------

Change Over Sub	1.00			3130.00	
Shut In Tool	5.00			3135.00	
Hydraulic tool	5.00			3140.00	
Packer	4.00			3144.00	20.00 Bottom Of Top Packer
Packer	5.00			3149.00	
Stubb	1.00			3150.00	
Perforations	5.00			3155.00	
Recorder	0.00	8319	Inside	3155.00	
Recorder	0.00	8166	Outside	3155.00	
Perforations	21.00			3176.00	
Bullnose	3.00			3179.00	30.00 Bottom Packers & Anchor

**Total Tool Length: 50.00**



**TRILOBITE  
TESTING, INC.**

**DRILL STEM TEST REPORT**

**FLUID SUMMARY**

Jason Oil, Co, LLC

**36-14s-14w Russell,KS**

PO Box 701  
Russell KS 67665

**J. Radke #5**

Job Ticket: 52163

**DST#: 2**

ATTN: Jeff Lawler

Test Start: 2013.03.25 @ 04:39:00

**Mud and Cushion Information**

Mud Type: Gel Chem  
Mud Weight: 9.00 lb/gal  
Viscosity: 44.00 sec/qt  
Water Loss: 7.98 in<sup>3</sup>  
Resistivity: ohm.m  
Salinity: 3000.00 ppm  
Filter Cake: inches

Cushion Type:  
Cushion Length: ft  
Cushion Volume: bbl  
Gas Cushion Type:  
Gas Cushion Pressure: psig

Oil API: deg API  
Water Salinity: ppm

**Recovery Information**

Recovery Table

Length ft	Description	Volume bbl
35.00	GMCO, 10%G, 30%M, 60%O	0.491
10.00	GO, 10%G, 90%O	0.140
0.00	124' of G.I.P.	0.000

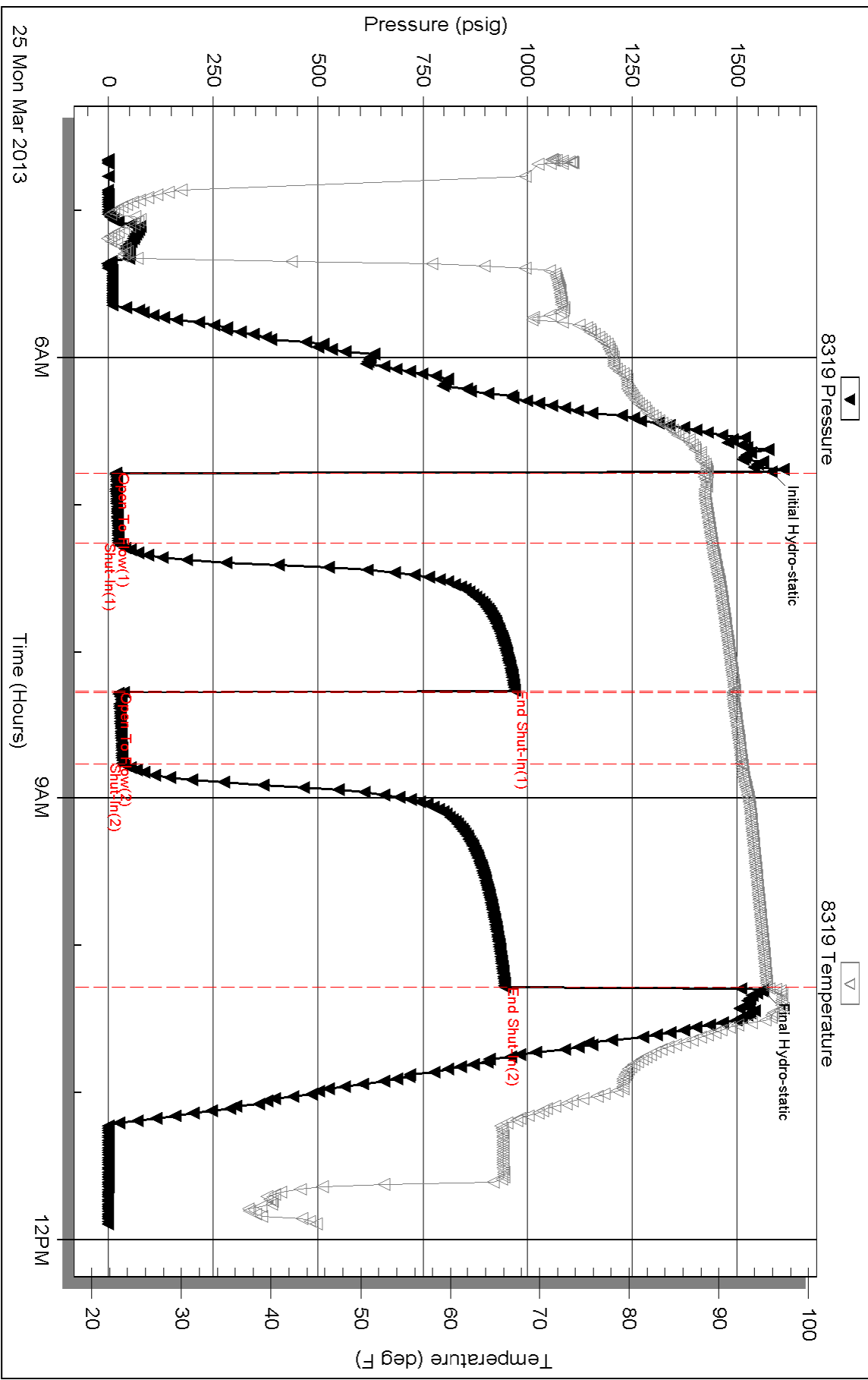
Total Length: 45.00 ft      Total Volume: 0.631 bbl

Num Fluid Samples: 0      Num Gas Bombs: 0      Serial #:

Laboratory Name:      Laboratory Location:

Recovery Comments:

# Pressure vs. Time

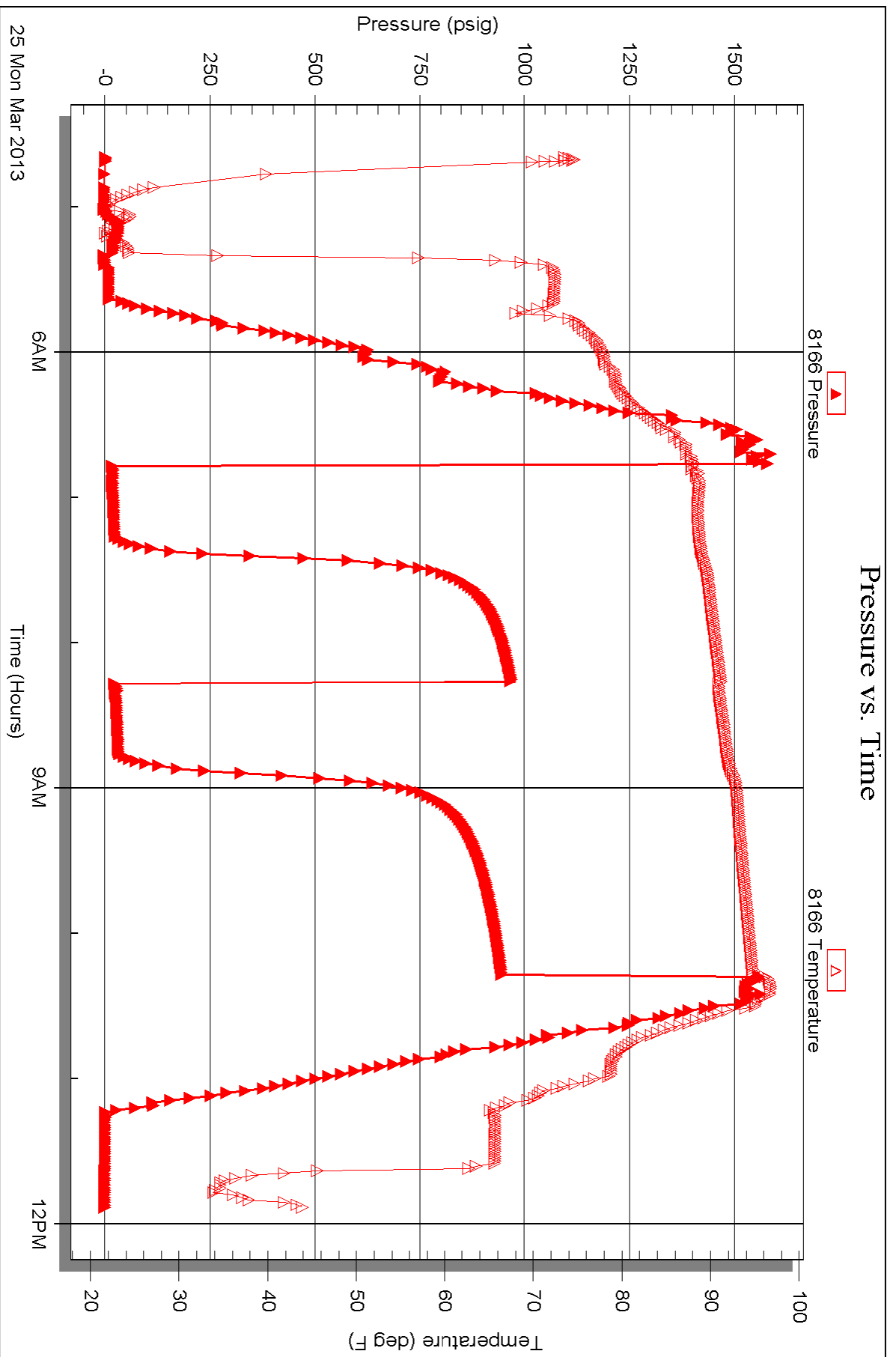


Serial #: 8166

Outside Jason Oil, Co, LLC

J. Radtke #5

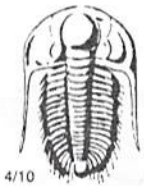
DST Test Number: 2



Triobite Testing, Inc

Ref. No: 52163

Printed: 2013.03.27 @ 10:49:56



# TRILOBITE TESTING INC.

1515 Commerce Parkway • Hays, Kansas 67601

## Test Ticket

NO. 52162

Well Name & No. J. Radke #5 Test No. 1 Date 3-23-12  
 Company Jason Oil Company LLC Elevation 1755 KB 1750 GL  
 Address Po Box 701, Russell KS, 67665  
 Co. Rep / Geo. Jeff Lawler Rig Southwind #6  
 Location: Sec. 36 Twp. 14S Rge. 14W Co. Russell State KS

Interval Tested 2830-2940 Zone Tested Toronto-LKC "C"  
 Anchor Length 110' Drill Pipe Run 2709' Mud Wt. 8.8  
 Top Packer Depth 2825 Drill Collars Run 124' Vis 44  
 Bottom Packer Depth 2830 Wt. Pipe Run - WL 8.0  
 Total Depth 2940 Chlorides 3000 ppm System LCM -

Blow Description IF - 6' blow  
ISI - No return  
FF - B.O.B. in 12 minutes  
FSI - Surface return

Rec	Feet of	%gas	%oil	%water	%mud
<u>62</u>	<u>V. SOCM</u>	<u>5</u>		<u>95</u>	
<u>62</u>	<u>60CM</u>	<u>20</u>	<u>20</u>	<u>60</u>	
	<u>248' G.I.P.</u>				

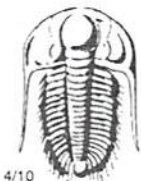
Rec Total 124' BHT 92° Gravity - API RW - @ - ° F Chlorides - ppm

(A) Initial Hydrostatic 1440  Test 1150 T-On Location 11:53 pm  
 (B) First Initial Flow 67  Jars \_\_\_\_\_ T-Started 1:00 am  
 (C) First Final Flow 81  Safety Joint \_\_\_\_\_ T-Open 3:55 am  
 (D) Initial Shut-In 367  Circ Sub \_\_\_\_\_ T-Pulled 6:55 am  
 (E) Second Initial Flow 84  Hourly Standby \_\_\_\_\_ T-Out 8:56 am  
 (F) Second Final Flow 95  Mileage 64RT 99.20  
 (G) Final Shut-In 373  Sampler \_\_\_\_\_  
 (H) Final Hydrostatic 1414  Straddle \_\_\_\_\_

Initial Open 30  Shale Packer \_\_\_\_\_  
 Initial Shut-In 60  Shale Packer \_\_\_\_\_  
 Final Flow 30  Extra Packer \_\_\_\_\_  
 Final Shut-In 60  Extra Recorder \_\_\_\_\_  
 Sub Total 1249.20  Day Standby \_\_\_\_\_  
 Total 1249.20  Accessibility \_\_\_\_\_  
 MP/DST Disc't \_\_\_\_\_

Approved By \_\_\_\_\_ Our Representative Cody Bl...

Trilobite Testing Inc. shall not be liable for damaged of any kind of the property or personnel of the one for whom a test is made, or for any loss suffered or sustained, directly or indirectly, through the use of its equipment, or its statements or opinion concerning the results of any test, tools lost or damaged in the hole shall be paid for at cost by the party for whom the test is made.



# TRILOBITE TESTING INC.

1515 Commerce Parkway • Hays, Kansas 67601

## Test Ticket

NO. 52163

Well Name & No. J. Radke #5 Test No. 2 Date 3-25-13  
 Company Jason Oil Company LLC Elevation 1755 KB 1750 GL  
 Address Po Box 701, Russell KS, 67665  
 Co. Rep / Geo. Jeff Lawler Rig Southwind #6  
 Location: Sec. 36 Twp. 14S Rge. 14W Co. Russell State KS

Interval Tested 3149 - 3179 Zone Tested Gorham Sand  
 Anchor Length 30' Drill Pipe Run \_\_\_\_\_ Mud Wt. 9.3  
 Top Packer Depth 3144 Drill Collars Run — Vis 52  
 Bottom Packer Depth 3149 Wt. Pipe Run — WL 8  
 Total Depth 3179 Chlorides 4,000 ppm System LCM —

Blow Description IF-7" blow  
ISI- No return  
FF-5" blow  
FSI- No return

Rec	Feet of	%gas	%oil	%water	%mud
<u>35</u>	<u>6 MCO</u>	<u>10</u>	<u>60</u>	<u>30</u>	
<u>10</u>	<u>60</u>	<u>10</u>	<u>90</u>		
	<u>124' of G.I.P.</u>				

Rec Total 45 BHT 95° Gravity \_\_\_\_\_ API RW \_\_\_\_\_ @ \_\_\_\_\_ ° F Chlorides \_\_\_\_\_ ppm

(A) Initial Hydrostatic 1582  Test 1150 T-On Location 4:00am  
 (B) First Initial Flow 17  Jars \_\_\_\_\_ T-Started 4:39am  
 (C) First Final Flow 23  Safety Joint \_\_\_\_\_ T-Open 6:46am  
 (D) Initial Shut-In 968  Circ Sub \_\_\_\_\_ T-Pulled 10:16am  
 (E) Second Initial Flow 23  Hourly Standby \_\_\_\_\_ T-Out 11:53am  
 (F) Second Final Flow 35  Mileage 64RT 99.20 Comments \_\_\_\_\_  
 (G) Final Shut-In 946  Sampler \_\_\_\_\_  
 (H) Final Hydrostatic 1560  Straddle \_\_\_\_\_  
 Shale Packer \_\_\_\_\_  
 Shale Packer \_\_\_\_\_  
 Extra Packer \_\_\_\_\_  
 Extra Recorder \_\_\_\_\_  
 Day Standby \_\_\_\_\_  
 Accessibility \_\_\_\_\_

Initial Open 30  Ruined Shale Packer \_\_\_\_\_  
 Initial Shut-In 60  Ruined Packer \_\_\_\_\_  
 Final Flow 30  Extra Copies \_\_\_\_\_  
 Final Shut-In 90 Sub Total 0  
 Total 1249.20  
 MP/DST Disc't \_\_\_\_\_  
 Sub Total 1249.20

Approved By \_\_\_\_\_ Our Representative Cody Bloedorn

Trilobite Testing Inc. shall not be liable for damaged of any kind of the property or personnel of the one for whom a test is made, or for any loss suffered or sustained, directly or indirectly, through the use of its equipment, or its statements or opinion concerning the results of any test, tools lost or damaged in the hole shall be paid for at cost by the party for whom the test is made.