



**TRILOBITE
TESTING, INC.**

DRILL STEM TEST REPORT

Russell Oil, Inc.
P.O. Box 8050
Edmond, OK 73083
ATTN: Kitt Noah

22-18s.-11w.
Ames #6
Job Ticket: 49716 **DST#: 1**
Test Start: 2013.01.20 @ 14:51:55

GENERAL INFORMATION:

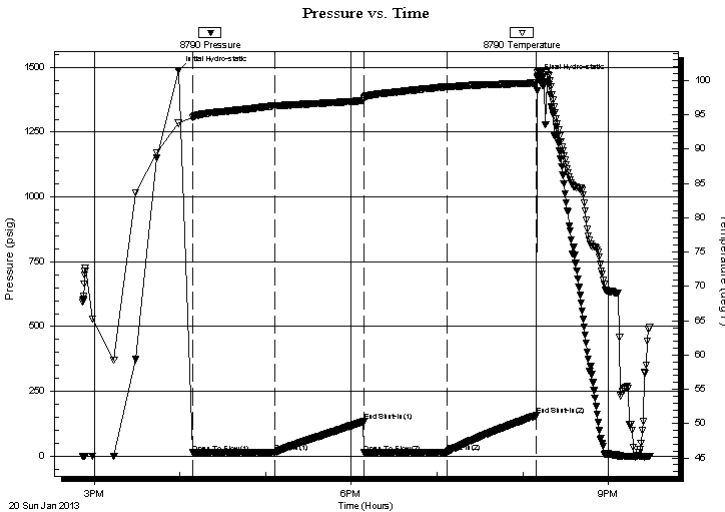
Formation: **Lansing A**
Deviated: No Whipstock: 0.00 ft (KB)
Time Tool Opened: 16:08:55
Time Test Ended: 21:28:40
Interval: **3016.00 ft (KB) To 3050.00 ft (KB) (TVD)**
Total Depth: 3050.00 ft (KB) (TVD)
Hole Diameter: 7.88 inches Hole Condition: Fair
Test Type: Conventional Bottom Hole (Initial)
Tester: Ryan Reynolds
Unit No: 63
Reference Elevations: 1786.00 ft (KB)
1776.00 ft (CF)
KB to GR/CF: 10.00 ft

Serial #: 8790

Press @ Run Depth: 15.30 psig @ ft (KB) Capacity: 8000.00 psig
Start Date: 2013.01.20 End Date: 2013.01.20 Last Calib.: 2013.01.20
Start Time: 14:52:00 End Time: 21:28:39 Time On Btm: 2013.01.20 @ 15:58:55
Time Off Btm: 2013.01.20 @ 20:10:10

TEST COMMENT: IF: Fair blow . 1/2" - 5 1/2"
IS: No blow
FF: Fair blow . 2" - 4 1/2"
FS: No blow

PRESSURE SUMMARY



Time (Min.)	Pressure (psig)	Temp (deg F)	Annotation
0	1488.33	93.80	Initial Hydro-static
10	12.11	94.57	Open To Flow (1)
68	14.01	96.33	Shut-In(1)
130	132.87	97.07	End Shut-In(1)
130	12.44	97.28	Open To Flow (2)
188	15.30	99.10	Shut-In(2)
251	156.76	99.65	End Shut-In(2)
252	1458.30	101.19	Final Hydro-static

Recovery

Length (ft)	Description	Volume (bbl)
15.00	Drig mud 100% mud	0.21

Gas Rates

Choke (inches)	Pressure (psig)	Gas Rate (Mcf/d)



**TRILOBITE
TESTING, INC.**

DRILL STEM TEST REPORT

FLUID SUMMARY

Russell Oil, Inc.

22-18s.-11w.

P.O. Box 8050
Edmond, OK 73083

Ames #6

Job Ticket: 49716

DST#: 1

ATTN: Kitt Noah

Test Start: 2013.01.20 @ 14:51:55

Mud and Cushion Information

Mud Type: Gel Chem

Cushion Type:

Oil API:

deg API

Mud Weight: 9.00 lb/gal

Cushion Length:

ft

Water Salinity:

7500 ppm

Viscosity: 55.00 sec/qt

Cushion Volume:

bbbl

Water Loss: 7.99 in³

Gas Cushion Type:

Resistivity: ohm.m

Gas Cushion Pressure:

psig

Salinity: 7500.00 ppm

Filter Cake: 0.02 inches

Recovery Information

Recovery Table

Length ft	Description	Volume bbl
15.00	Drig mud 100%mud	0.210

Total Length: 15.00 ft Total Volume: 0.210 bbl

Num Fluid Samples: 0

Num Gas Bombs: 0

Serial #: none

Laboratory Name:

Laboratory Location:

Recovery Comments:

