

TRILOBITE TESTING, INC.

DRILL STEM TEST REPORT

Russell Oil, Inc.

22-18s.-11w.

P.O. Box 8050
Edmond, OK 73083

Ames #6

ATTN: Kitt Noah

Job Ticket: 49721

DST#: 6

Test Start: 2013.01.23 @ 20:02:43

GENERAL INFORMATION:

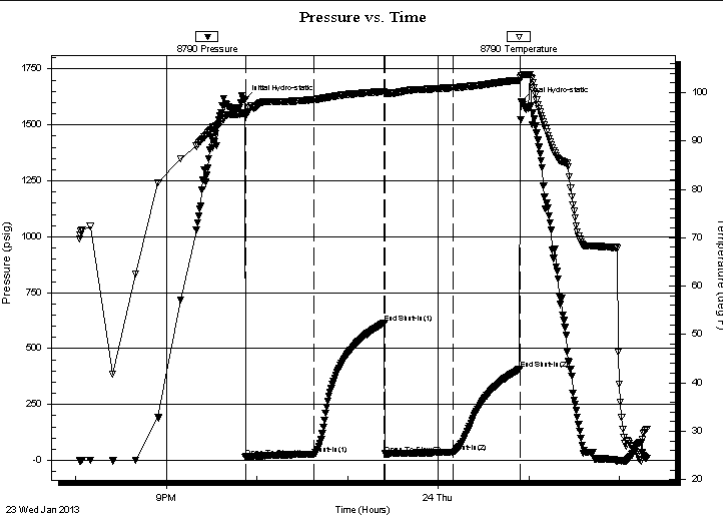
Formation: **Arbuckle**
 Deviated: No Whipstock: 0.00 ft (KB)
 Time Tool Opened: 21:52:28
 Time Test Ended: 02:17:43
Interval: 3280.00 ft (KB) To 3333.00 ft (KB) (TVD)
 Total Depth: 3333.00 ft (KB) (TVD)
 Hole Diameter: 7.88 inches
 Hole Condition: Fair
 Test Type: Conventional Bottom Hole (Reset)
 Tester: Ryan Reynolds
 Unit No: 48
 Reference Elevations: 1786.00 ft (KB)
 1776.00 ft (CF)
 KB to GR/CF: 10.00 ft

Serial #: 8790

Inside

Press @ Run Depth: 36.30 psig @ 3281.00 ft (KB)
 Start Date: 2013.01.23 End Date: 2013.01.24
 Start Time: 20:02:48 End Time: 02:17:42
 Capacity: 8000.00 psig
 Last Calib.: 2013.01.24
 Time On Btm: 2013.01.23 @ 21:52:13
 Time Off Btm: 2013.01.24 @ 00:54:58

TEST COMMENT: IF: Fair blow . 1/4" - 5"
 IS: No blow
 FF: Weak blow . Surface blow throughout
 FS: No blow



PRESSURE SUMMARY

Time (Min.)	Pressure (psig)	Temp (deg F)	Annotation
0	1612.06	95.77	Initial Hydro-static
1	14.86	95.02	Open To Flow (1)
46	27.99	98.55	Shut-In(1)
92	615.30	100.20	End Shut-In(1)
93	29.35	99.93	Open To Flow (2)
138	36.30	101.00	Shut-In(2)
182	409.10	102.54	End Shut-In(2)
183	1602.21	103.45	Final Hydro-static

Recovery

Length (ft)	Description	Volume (bbl)
50.00	OCM 20%oil, 80%mud	0.70
16.00	Clean oil 100%oil	0.22

* Recovery from multiple tests

Gas Rates

Choke (inches)	Pressure (psig)	Gas Rate (Mcf/d)



**TRILOBITE
TESTING, INC.**

DRILL STEM TEST REPORT

FLUID SUMMARY

Russell Oil, Inc.

22-18s.-11w.

P.O. Box 8050
Edmond, OK 73083

Ames #6

Job Ticket: 49721

DST#: 6

ATTN: Kitt Noah

Test Start: 2013.01.23 @ 20:02:43

Mud and Cushion Information

Mud Type: Gel Chem

Cushion Type:

Oil API:

deg API

Mud Weight: 9.00 lb/gal

Cushion Length:

ft

Water Salinity:

13200 ppm

Viscosity: 62.00 sec/qt

Cushion Volume:

bbbl

Water Loss: 11.19 in³

Gas Cushion Type:

Resistivity: ohm.m

Gas Cushion Pressure:

psig

Salinity: 13200.00 ppm

Filter Cake: 0.02 inches

Recovery Information

Recovery Table

Length ft	Description	Volume bbbl
50.00	OCM 20%oil, 80%mud	0.701
16.00	Clean oil 100%oil	0.224

Total Length: 66.00 ft

Total Volume: 0.925 bbl

Num Fluid Samples: 0

Num Gas Bombs: 0

Serial #: NONE

Laboratory Name:

Laboratory Location:

Recovery Comments:

