



DRILL STEM TEST REPORT

Prepared For: **Herman L. Loeb LLC.**

PO Box 838
Lawrenceville, IL 62439

ATTN: Jon Christensen

Art Todd #1-20

20-27s-18w Kiowa,KS

Start Date: 2013.04.21 @ 15:07:02

End Date: 2013.04.21 @ 22:49:47

Job Ticket #: 50479 DST #: 1

Trilobite Testing, Inc

PO Box 362 Hays, KS 67601

ph: 785-625-4778 fax: 785-625-5620

Printed: 2013.04.29 @ 11:19:43



TRILOBITE TESTING, INC.

DRILL STEM TEST REPORT

Herman L. Loeb LLC.
 PO Box 838
 Lawrenceville, IL 62439
 ATTN: Jon Christensen

20-27s-18w Kiowa,KS
Art Todd #1-20
 Job Ticket: 50479 **DST#: 1**
 Test Start: 2013.04.21 @ 15:07:02

GENERAL INFORMATION:

Formation: **Lansing A**
 Deviated: No Whipstock: ft (KB)
 Time Tool Opened: 17:05:02
 Time Test Ended: 22:49:47
 Interval: **4197.00 ft (KB) To 4214.00 ft (KB) (TVD)**
 Total Depth: 4214.00 ft (KB) (TVD)
 Hole Diameter: 7.88 inches Hole Condition: Fair
 Test Type: Conventional Bottom Hole (Initial)
 Tester: Ryan Reynolds
 Unit No: 48
 Reference Elevations: 2207.00 ft (KB)
 2196.00 ft (CF)
 KB to GR/CF: 11.00 ft

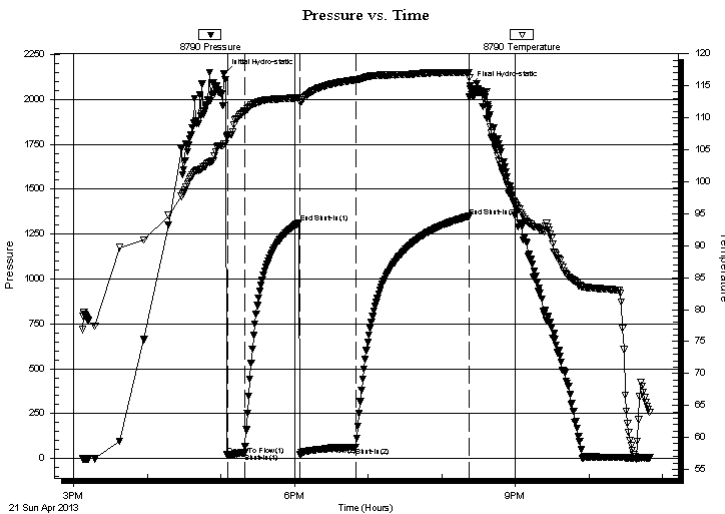
Serial #: 8790

Inside

Press @ Run Depth: 64.17 psig @ 4198.00 ft (KB) Capacity: 8000.00 psig
 Start Date: 2013.04.21 End Date: 2013.04.21 Last Calib.: 2013.04.21
 Start Time: 15:07:07 End Time: 22:49:46 Time On Btm: 2013.04.21 @ 17:02:32
 Time Off Btm: 2013.04.21 @ 20:23:02

TEST COMMENT: IF: Strong blow . BOB in 20 sec. No GTS.
 IS!: No blow
 FF: Strong blow . BOB immed. No GTS.
 FS!: Weak blow . Surf. - 1/2"

PRESSURE SUMMARY



Time (Min.)	Pressure (psig)	Temp (deg F)	Annotation
0	2142.73	105.85	Initial Hydro-static
3	18.96	107.19	Open To Flow (1)
17	31.59	111.00	Shut-In(1)
62	1313.87	113.14	End Shut-In(1)
62	20.58	112.41	Open To Flow (2)
108	64.17	115.95	Shut-In(2)
200	1349.09	117.08	End Shut-In(2)
201	2076.36	114.95	Final Hydro-static

Recovery

Gas Rates

Length (ft)	Description	Volume (bbl)
0.00	2375' GIP	0.00
60.00	SLI OGCMW 2%oil, 5%gas, 10%mud, 83%0.30r	
60.00	WOGCM 12%w tr, 13%oil, 17%gas, 58%0.30	
20.00	WGCOM 7%w tr, 9%gas, 15%oil, 69%0.10	

	Choke (inches)	Pressure (psig)	Gas Rate (Mcf/d)



**TRILOBITE
TESTING, INC.**

DRILL STEM TEST REPORT

TOOL DIAGRAM

Herman L. Loeb LLC.

20-27s-18w Kiowa,KS

PO Box 838
Lawrenceville, IL 62439

Art Todd #1-20

Job Ticket: 50479

DST#: 1

ATTN: Jon Christensen

Test Start: 2013.04.21 @ 15:07:02

Tool Information

Drill Pipe:	Length: 3983.00 ft	Diameter: 3.80 inches	Volume: 55.87 bbl	Tool Weight: 2100.00 lb
Heavy Wt. Pipe:	Length: 0.00 ft	Diameter: 0.00 inches	Volume: 0.00 bbl	Weight set on Packer: 25000.00 lb
Drill Collar:	Length: 216.00 ft	Diameter: 2.25 inches	Volume: 1.06 bbl	Weight to Pull Loose: 81000.00 lb
			<u>Total Volume: 56.93 bbl</u>	Tool Chased 0.00 ft
Drill Pipe Above KB:	24.00 ft			String Weight: Initial 71000.00 lb
Depth to Top Packer:	4197.00 ft			Final 71500.00 lb
Depth to Bottom Packer:	ft			
Interval between Packers:	17.00 ft			
Tool Length:	39.00 ft			
Number of Packers:	2	Diameter: 6.75 inches		

Tool Comments:

Tool Description	Length (ft)	Serial No.	Position	Depth (ft)	Accum. Lengths
------------------	-------------	------------	----------	------------	----------------

Shut In Tool	5.00			4180.00	
Hydraulic tool	5.00			4185.00	
Safety Joint	2.00			4187.00	
Packer	5.00			4192.00	22.00 Bottom Of Top Packer
Packer	5.00			4197.00	
Stubb	1.00			4198.00	
Recorder	0.00	8790	Inside	4198.00	
Recorder	0.00	8792	Outside	4198.00	
Perforations	13.00			4211.00	
Bullnose	3.00			4214.00	17.00 Bottom Packers & Anchor
Total Tool Length:	39.00				



**TRILOBITE
TESTING, INC.**

DRILL STEM TEST REPORT

FLUID SUMMARY

Herman L. Loeb LLC.

20-27s-18w Kiowa,KS

PO Box 838
Lawrenceville, IL 62439

Art Todd #1-20

Job Ticket: 50479

DST#: 1

ATTN: Jon Christensen

Test Start: 2013.04.21 @ 15:07:02

Mud and Cushion Information

Mud Type: Gel Chem
Mud Weight: 9.00 lb/gal
Viscosity: 63.00 sec/qt
Water Loss: 13.18 in³
Resistivity: ohm.m
Salinity: 6800.00 ppm
Filter Cake: 0.20 inches

Cushion Type:
Cushion Length: ft
Cushion Volume: bbl
Gas Cushion Type:
Gas Cushion Pressure: psig

Oil API: deg API
Water Salinity: 180000 ppm

Recovery Information

Recovery Table

Length ft	Description	Volume bbl
0.00	2375' GIP	0.000
60.00	SLI OGCMW 2%oil, 5%gas, 10%mud, 83%w	0.295
60.00	WOGCM 12%w tr, 13%oil, 17%gas, 58%mud	0.295
20.00	WGCOM 7%w tr, 9%gas, 15%oil, 69%mud	0.098

Total Length: 140.00 ft Total Volume: 0.688 bbl

Num Fluid Samples: 0 Num Gas Bombs: 0 Serial #: none

Laboratory Name: Laboratory Location:

Recovery Comments:

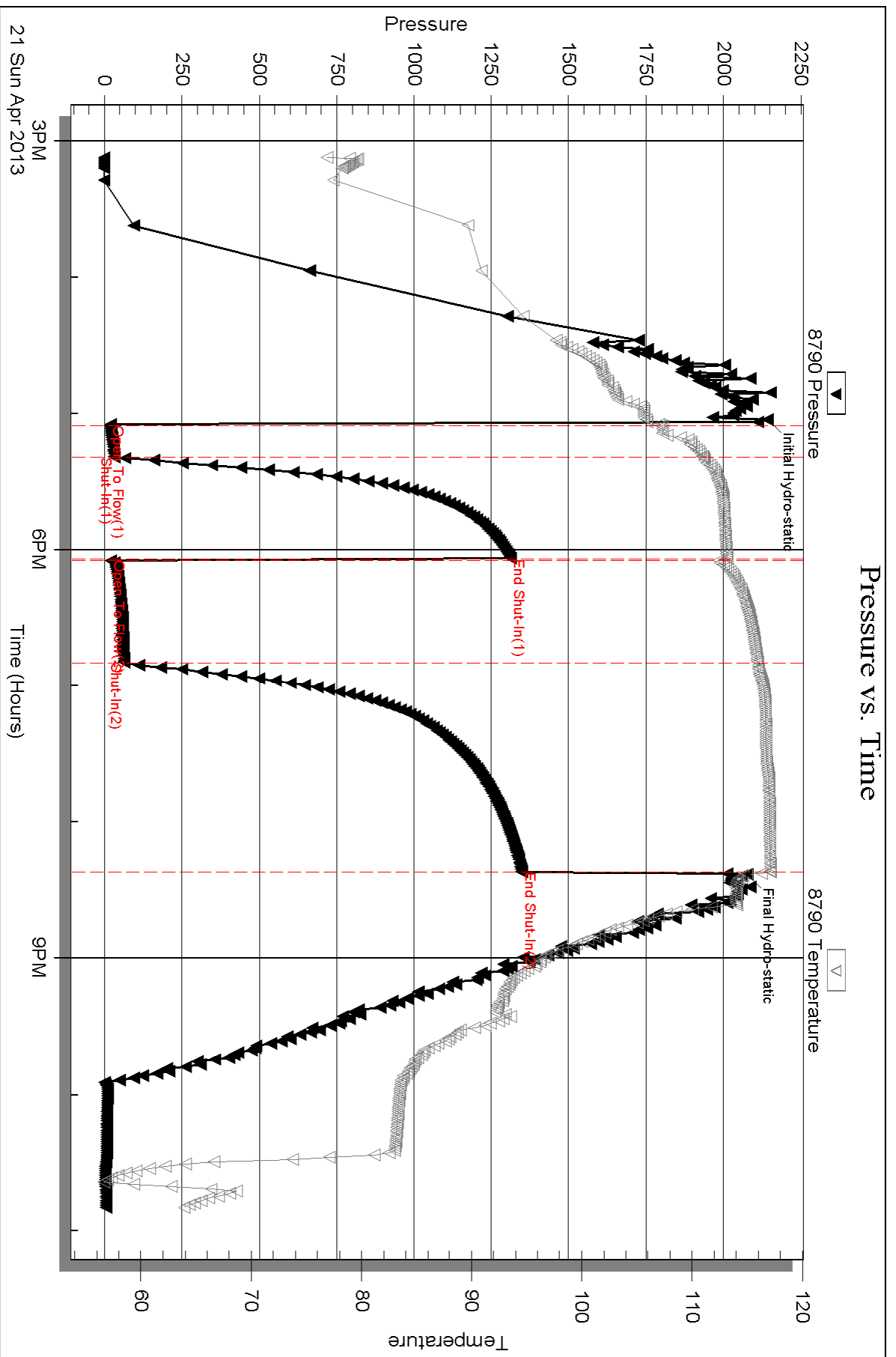
Serial #: 8790

Inside

Herrman L. Loeb LLC.

Art Todd #1-20

DST Test Number: 1



Triobite Testing, Inc

Ref. No: 50479

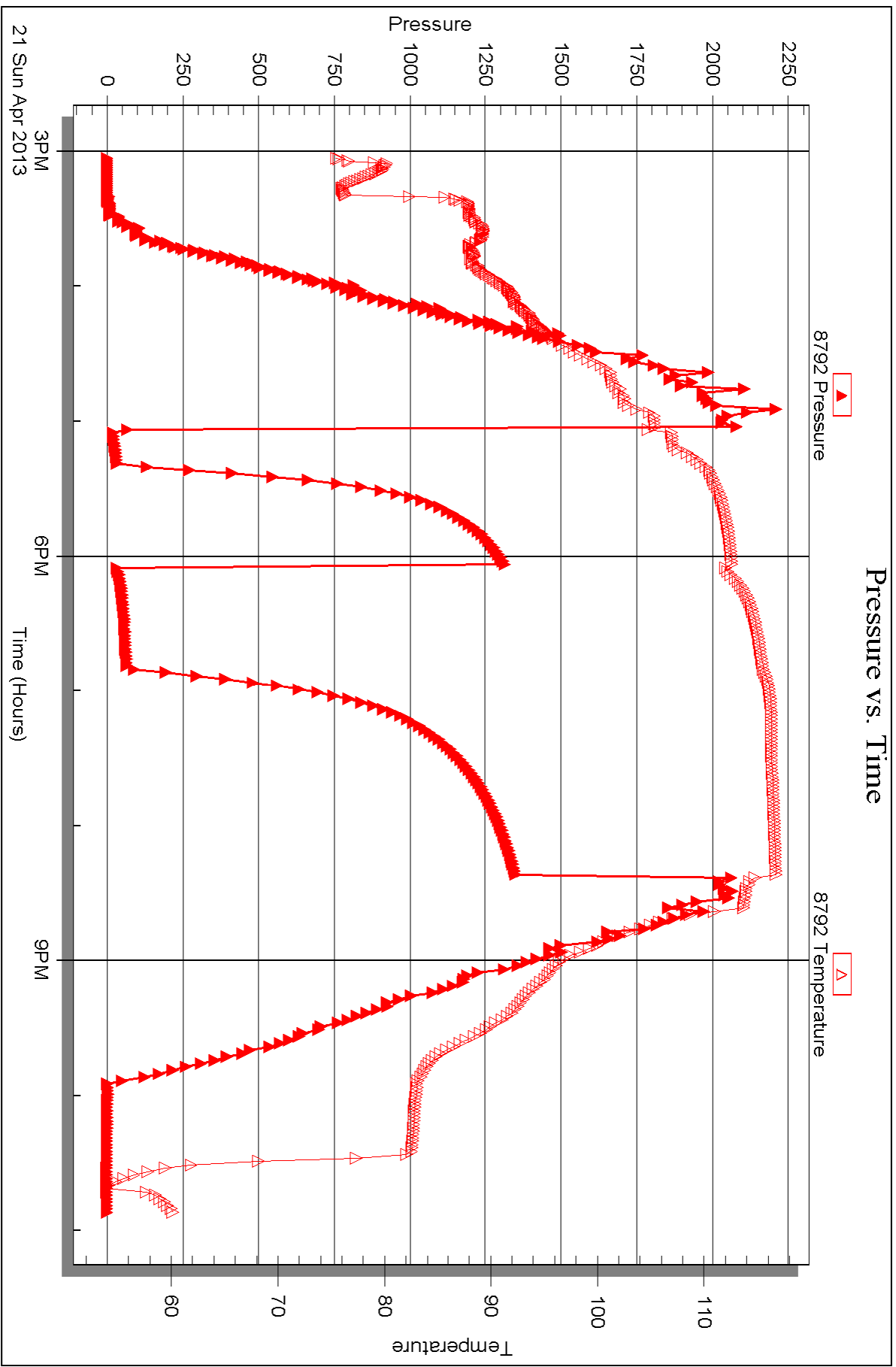
Printed: 2013.04.29 @ 11:19:46

Serial #: 8792

Outside Herrman L. Loeb LLC.

Art Todd #1-20

DST Test Number: 1





DRILL STEM TEST REPORT

Prepared For: **Herman L. Loeb LLC.**

PO Box 838
Lawrenceville, IL 62439

ATTN: Jon Christensen

Art Todd #1-20

20-27s-18w Kiowa,KS

Start Date: 2013.04.23 @ 09:38:14

End Date: 2013.04.23 @ 17:50:59

Job Ticket #: 50480 DST #: 2

Trilobite Testing, Inc

PO Box 362 Hays, KS 67601

ph: 785-625-4778 fax: 785-625-5620

Printed: 2013.04.29 @ 11:18:30



**TRILOBITE
TESTING, INC.**

DRILL STEM TEST REPORT

Herman L. Loeb LLC.
PO Box 838
Lawrenceville, IL 62439
ATTN: Jon Christensen

20-27s-18w Kiowa,KS

Art Todd #1-20

Job Ticket: 50480

DST#: 2

Test Start: 2013.04.23 @ 09:38:14

GENERAL INFORMATION:

Formation: **KC. "I"**
 Deviated: No Whipstock: ft (KB)
 Time Tool Opened: 11:52:44
 Time Test Ended: 17:50:59
 Interval: **4392.00 ft (KB) To 4414.00 ft (KB) (TVD)**
 Total Depth: 4414.00 ft (KB) (TVD)
 Hole Diameter: 7.88 inches Hole Condition: Fair
 Test Type: Conventional Bottom Hole (Reset)
 Tester: Ryan Reynolds
 Unit No: 48
 Reference Elevations: 2207.00 ft (KB)
 2196.00 ft (CF)
 KB to GR/CF: 11.00 ft

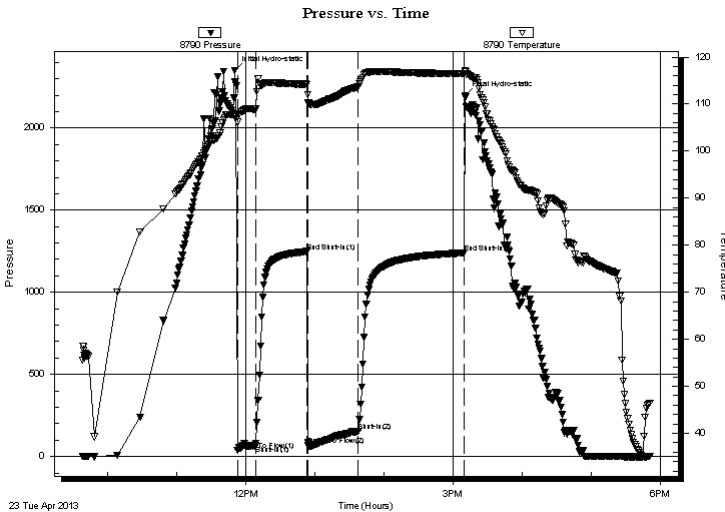
Serial #: 8790

Inside

Press @ Run Depth: 153.82 psig @ 4393.00 ft (KB) Capacity: 8000.00 psig
 Start Date: 2013.04.23 End Date: 2013.04.23 Last Calib.: 2013.04.23
 Start Time: 09:38:19 End Time: 17:50:58 Time On Btm: 2013.04.23 @ 11:50:14
 Time Off Btm: 2013.04.23 @ 15:10:29

TEST COMMENT: IF: Strong blow . BOB 2 min. No GTS.
 IS: Weak blow . Surf. - 2" - 1"
 FF: Strong blow . BOB immed. GTS @ 14 min. Gauged throughout.
 FS: Strong BB. BOB @ 54 min.

PRESSURE SUMMARY



Time (Min.)	Pressure (psig)	Temp (deg F)	Annotation
0	2351.01	107.77	Initial Hydro-static
3	36.02	106.16	Open To Flow (1)
19	65.93	108.89	Shut-In(1)
63	1248.13	114.21	End Shut-In(1)
64	65.55	110.31	Open To Flow (2)
108	153.82	113.70	Shut-In(2)
200	1239.72	116.49	End Shut-In(2)
201	2198.89	117.16	Final Hydro-static

Recovery

Length (ft)	Description	Volume (bbl)
120.00	MWCO 3% mud, 12% w tr, 85% oil	0.59
275.00	SLI WCGMO 4% w tr, 20% gas, 20% mud, 2.98 oil	

* Recovery from multiple tests

Gas Rates

	Choke (inches)	Pressure (psig)	Gas Rate (Mcf/d)
First Gas Rate	0.13	11.00	9.51
Last Gas Rate	0.13	18.00	12.13
Max. Gas Rate	0.13	18.00	12.13



**TRILOBITE
TESTING, INC.**

DRILL STEM TEST REPORT

TOOL DIAGRAM

Herman L. Loeb LLC.

20-27s-18w Kiowa,KS

PO Box 838
Lawrenceville, IL 62439

Art Todd #1-20

Job Ticket: 50480

DST#: 2

ATTN: Jon Christensen

Test Start: 2013.04.23 @ 09:38:14

Tool Information

Drill Pipe:	Length: 4174.00 ft	Diameter: 3.80 inches	Volume: 58.55 bbl	Tool Weight: 2100.00 lb
Heavy Wt. Pipe:	Length: 0.00 ft	Diameter: 0.00 inches	Volume: 0.00 bbl	Weight set on Packer: 25000.00 lb
Drill Collar:	Length: 216.00 ft	Diameter: 2.25 inches	Volume: 1.06 bbl	Weight to Pull Loose: 86000.00 lb
			<u>Total Volume: 59.61 bbl</u>	Tool Chased 0.00 ft
Drill Pipe Above KB:	20.00 ft			String Weight: Initial 74000.00 lb
Depth to Top Packer:	4392.00 ft			Final 75000.00 lb
Depth to Bottom Packer:	ft			
Interval between Packers:	22.00 ft			
Tool Length:	44.00 ft			
Number of Packers:	2	Diameter: 6.75 inches		

Tool Comments:

Tool Description	Length (ft)	Serial No.	Position	Depth (ft)	Accum. Lengths
------------------	-------------	------------	----------	------------	----------------

Shut In Tool	5.00			4375.00	
Hydraulic tool	5.00			4380.00	
Safety Joint	2.00			4382.00	
Packer	5.00			4387.00	22.00 Bottom Of Top Packer
Packer	5.00			4392.00	
Stubb	1.00			4393.00	
Recorder	0.00	8790	Inside	4393.00	
Recorder	0.00	8792	Outside	4393.00	
Perforations	18.00			4411.00	
Bullnose	3.00			4414.00	22.00 Bottom Packers & Anchor
Total Tool Length:	44.00				



**TRILOBITE
TESTING, INC.**

DRILL STEM TEST REPORT

FLUID SUMMARY

Herman L. Loeb LLC.

20-27s-18w Kiowa,KS

PO Box 838
Lawrenceville, IL 62439

Art Todd #1-20

Job Ticket: 50480

DST#: 2

ATTN: Jon Christensen

Test Start: 2013.04.23 @ 09:38:14

Mud and Cushion Information

Mud Type: Gel Chem

Cushion Type:

Oil API:

deg API

Mud Weight: 9.00 lb/gal

Cushion Length:

ft

Water Salinity:

8200 ppm

Viscosity: 70.00 sec/qt

Cushion Volume:

bbbl

Water Loss: 10.78 in³

Gas Cushion Type:

Resistivity: ohm.m

Gas Cushion Pressure:

psig

Salinity: 8200.00 ppm

Filter Cake: 0.20 inches

Recovery Information

Recovery Table

Length ft	Description	Volume bbl
120.00	MWCO 3%mud, 12%w tr, 85%oil	0.590
275.00	SLI WCGMO 4%w tr, 20%gas, 20%mud, 56%	2.983

Total Length: 395.00 ft

Total Volume: 3.573 bbl

Num Fluid Samples: 1

Num Gas Bombs: 1

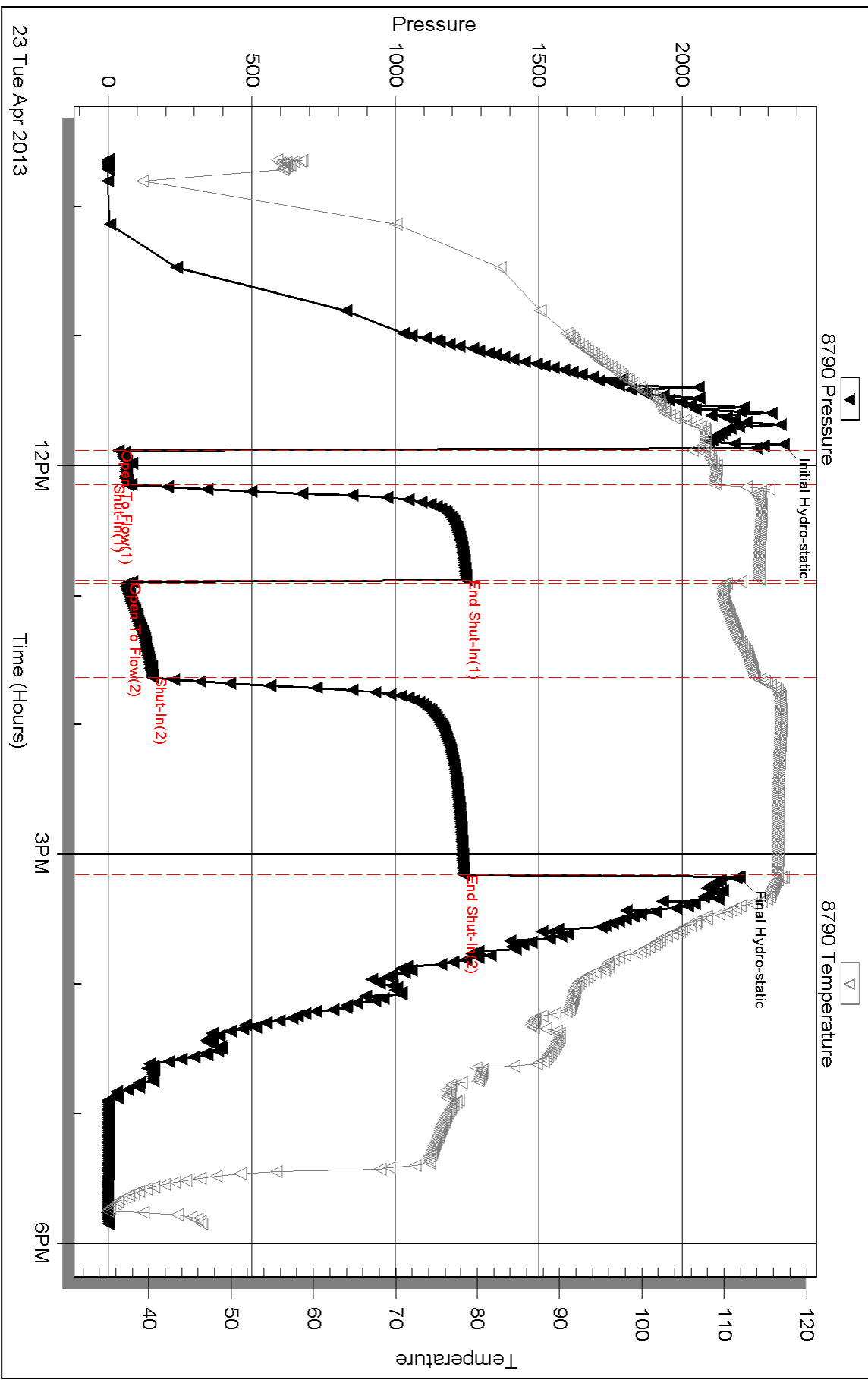
Serial #: RR-1

Laboratory Name: Caraway

Laboratory Location: Liberal, KS

Recovery Comments:

Pressure vs. Time

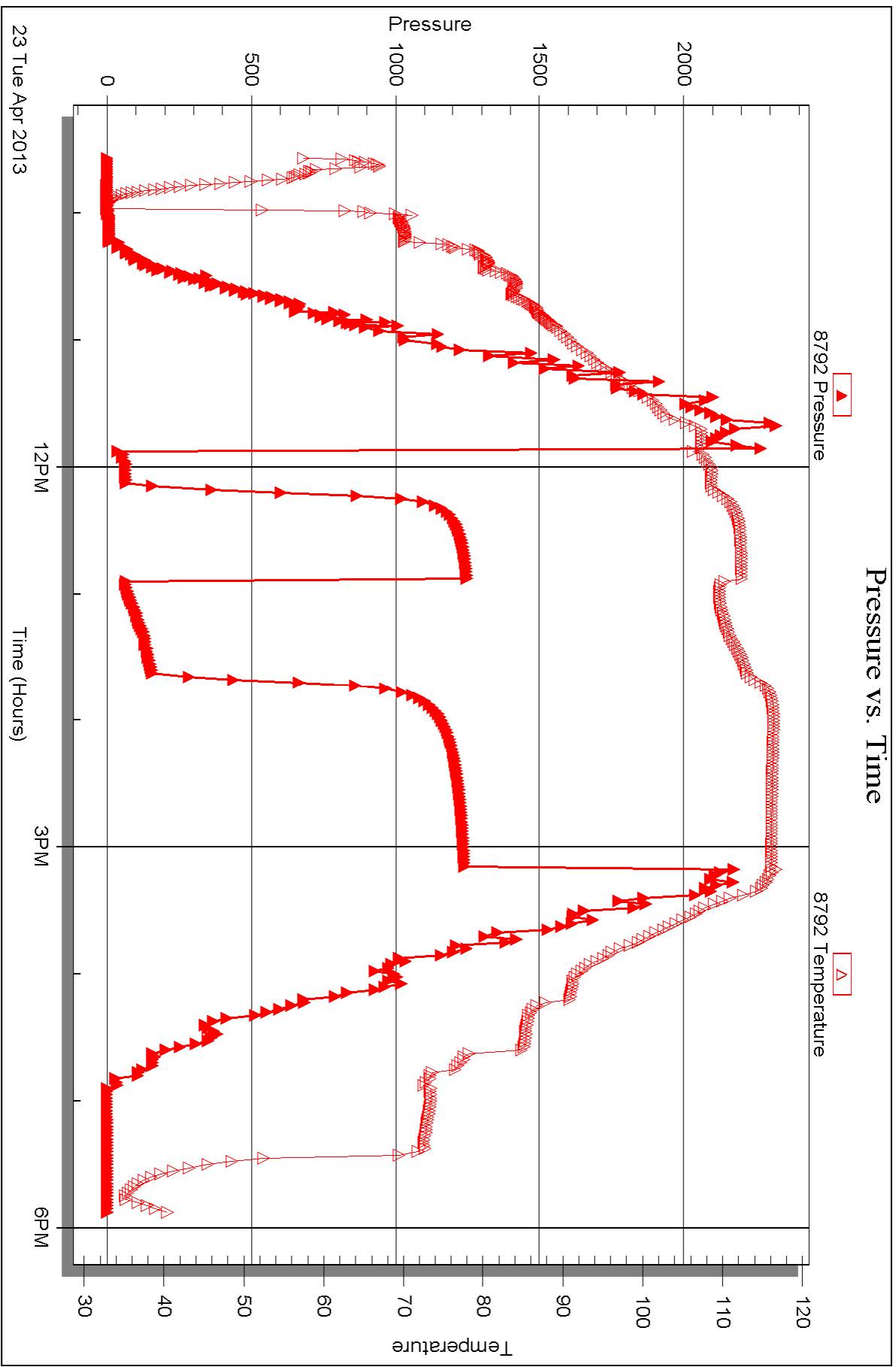


Serial #: 8792

Outside Herrman L. Loeb LLC.

Art Todd #1-20

DST Test Number: 2





DRILL STEM TEST REPORT

Prepared For: **Herman L. Loeb LLC.**

PO Box 838
Lawrenceville, IL 62439

ATTN: Jon Christensen

Art Todd #1-20

20-27s-18w Kiowa,KS

Start Date: 2013.04.25 @ 06:20:04

End Date: 2013.04.25 @ 14:40:49

Job Ticket #: 50481 DST #: 3

Trilobite Testing, Inc
PO Box 362 Hays, KS 67601
ph: 785-625-4778 fax: 785-625-5620

Printed: 2013.04.29 @ 11:17:47



**TRILOBITE
TESTING, INC.**

DRILL STEM TEST REPORT

TOOL DIAGRAM

Herman L. Loeb LLC.

20-27s-18w Kiowa,KS

PO Box 838
Lawrenceville, IL 62439

Art Todd #1-20

Job Ticket: 50481

DST#: 3

ATTN: Jon Christensen

Test Start: 2013.04.25 @ 06:20:04

Tool Information

Drill Pipe:	Length: 4525.00 ft	Diameter: 3.80 inches	Volume: 63.47 bbl	Tool Weight: 2100.00 lb
Heavy Wt. Pipe:	Length: 0.00 ft	Diameter: 0.00 inches	Volume: 0.00 bbl	Weight set on Packer: 25000.00 lb
Drill Collar:	Length: 216.00 ft	Diameter: 2.25 inches	Volume: 1.06 bbl	Weight to Pull Loose: 84000.00 lb
			<u>Total Volume: 64.53 bbl</u>	Tool Chased 0.00 ft
Drill Pipe Above KB:	24.00 ft			String Weight: Initial 78000.00 lb
Depth to Top Packer:	4739.00 ft			Final 78000.00 lb
Depth to Bottom Packer:	ft			
Interval between Packers:	63.00 ft			
Tool Length:	85.00 ft			
Number of Packers:	2	Diameter: 6.50 inches		

Tool Comments:

Tool Description	Length (ft)	Serial No.	Position	Depth (ft)	Accum. Lengths
------------------	-------------	------------	----------	------------	----------------

Shut In Tool	5.00			4722.00	
Hydraulic tool	5.00			4727.00	
Safety Joint	2.00			4729.00	
Packer	5.00			4734.00	22.00 Bottom Of Top Packer
Packer	5.00			4739.00	
Stubb	1.00			4740.00	
Recorder	0.00	8790	Inside	4740.00	
Recorder	0.00	8792	Outside	4740.00	
Perforations	2.00			4742.00	
Change Over Sub	1.00			4743.00	
Drill Pipe	32.00			4775.00	
Change Over Sub	1.00			4776.00	
Perforations	23.00			4799.00	
Bullnose	3.00			4802.00	63.00 Bottom Packers & Anchor

Total Tool Length: 85.00



**TRILOBITE
TESTING, INC.**

DRILL STEM TEST REPORT

FLUID SUMMARY

Herman L. Loeb LLC.

20-27s-18w Kiowa,KS

PO Box 838
Lawrenceville, IL 62439

Art Todd #1-20

Job Ticket: 50481

DST#: 3

ATTN: Jon Christensen

Test Start: 2013.04.25 @ 06:20:04

Mud and Cushion Information

Mud Type: Gel Chem

Cushion Type:

Oil API:

deg API

Mud Weight: 9.00 lb/gal

Cushion Length:

ft

Water Salinity:

5000 ppm

Viscosity: sec/qt

Cushion Volume:

bbbl

Water Loss: 7.99 in³

Gas Cushion Type:

Resistivity: ohm.m

Gas Cushion Pressure:

psig

Salinity: 5000.00 ppm

Filter Cake: 0.20 inches

Recovery Information

Recovery Table

Length ft	Description	Volume bbl
120.00	SLI OCGM 1%oil, 4%gas, 95%mud	0.590
0.00	Spots of free oil in hyd. tool	0.000

Total Length: 120.00 ft

Total Volume: 0.590 bbl

Num Fluid Samples: 1

Num Gas Bombs: 1

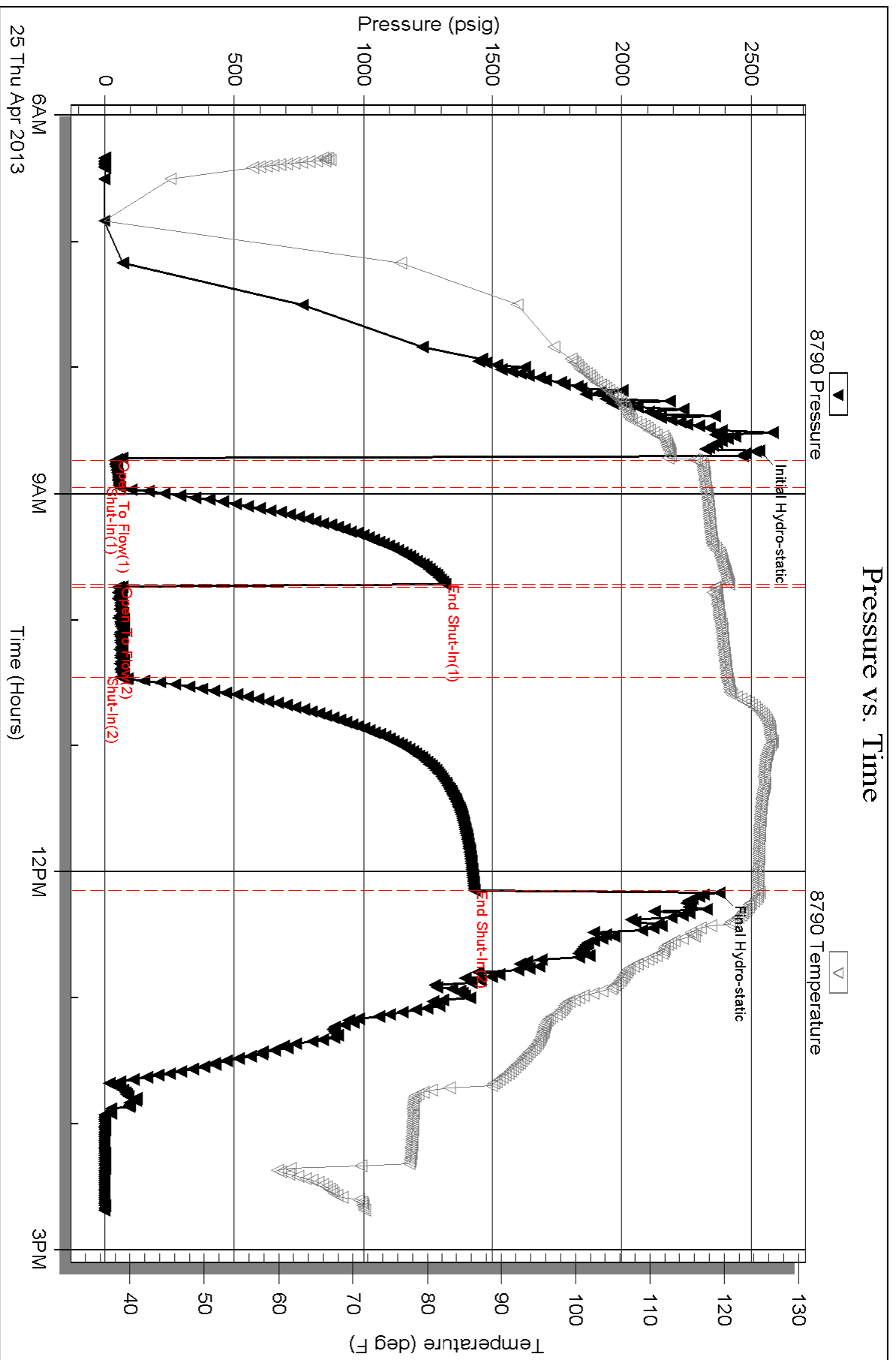
Serial #: RR-2

Laboratory Name: Caraway

Laboratory Location: Liberal, KS

Recovery Comments:

Pressure vs. Time

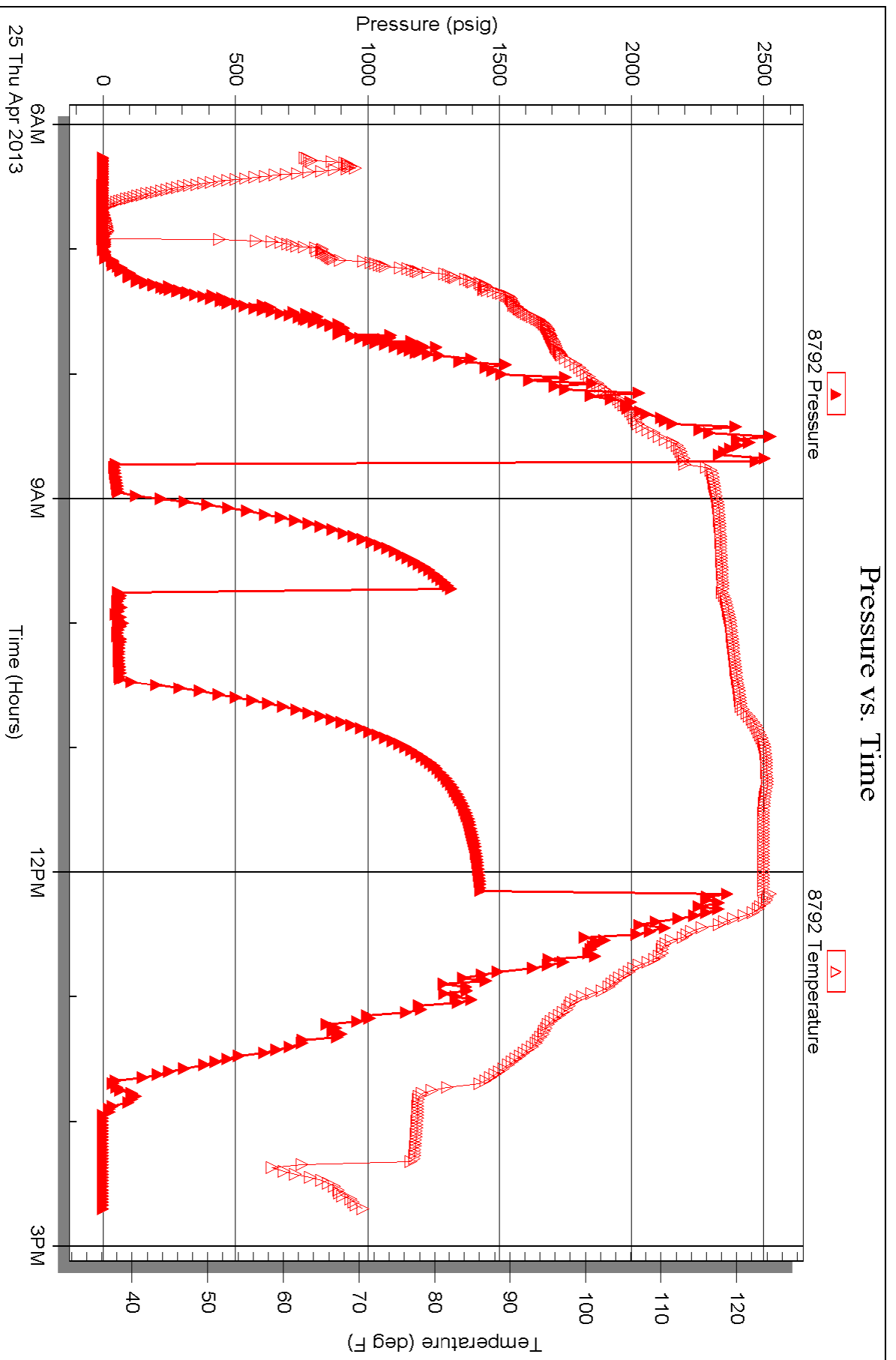


Serial #: 8792

Outside Herman L. Loeb LLC.

Art Todd #1-20

DST Test Number: 3





TRILOBITE TESTING INC.

1515 Commerce Parkway • Hays, Kansas 67601

Test Ticket

NO. 50479

4/10

Well Name & No. Art Todd # 1-20 Test No. 1 Date 4-21-13
 Company Herman L. Loeb LLC Elevation 2207 KB 2196 GL
 Address P.O. Box 838 Lawrenceville, IL 62439
 Co. Rep / Geo. Jon Christensen Rig Sterling 2
 Location: Sec. 20 Twp. 27s. Rge. 18w. Co. kiowa State KS

Interval Tested 4197-4214 Zone Tested Lansing "A"
 Anchor Length 17' Drill Pipe Run 3983 Mud Wt. 9.4
 Top Packer Depth 4192 Drill Collars Run 216 Vis 63
 Bottom Packer Depth 4197 Wt. Pipe Run Ø WL 13.2
 Total Depth 4214 Chlorides 6800 ppm System LCM 1#

Blow Description IF: Strong blow. BOB in 20 sec. No GTS.

ISI: No blow

FF: Strong blow. BOB immed. No GTS.

FSI: Weak blow. Surf - 1/2"

Rec	Feet of	%gas	%oil	%water	%mud
<u>2375</u>	<u>GIP</u>				
<u>20</u>	<u>WGLOM</u>	<u>9</u>	<u>15</u>	<u>7</u>	<u>69</u>
<u>60</u>	<u>WOGCM</u>	<u>17</u>	<u>13</u>	<u>12</u>	<u>58</u>
<u>60</u>	<u>SLI OCMW</u>	<u>5</u>	<u>2</u>	<u>83</u>	<u>10</u>

Rec Total 2515 BHT 117 Gravity W/C API RW 006 @ 58.5 F Chlorides 180000 ppm

(A) Initial Hydrostatic 2143 Test 1250 T-On Location 1420
 (B) First Initial Flow 19 Jars _____ T-Started 1507
 (C) First Final Flow 32 Safety Joint 75 T-Open 1705
 (D) Initial Shut-In 1314 Circ Sub _____ T-Pulled 2020
 (E) Second Initial Flow 21 Hourly Standby _____ T-Out 2250
 (F) Second Final Flow 64 Mileage 251.10 81+81 Test "Dry" Comments Called to Loc. to run DST 2, Oper. shut down rig due to high winds/wthr.
 (G) Final Shut-In 1349 Sampler _____ Ruined Shale Packer _____
 (H) Final Hydrostatic 2076 Straddle _____ Ruined Packer _____
 Shale Packer _____ Extra Copies _____
 Extra Packer _____ Extra Recorder _____ Sub Total 0
 Day Standby + Total 1576.10
 Accessibility _____ MP/DST Disc't _____
 Sub Total 1576.10

Approved By [Signature]

Our Representative Ryan Reynolds

Trilobite Testing Inc. shall not be liable for damaged of any kind of the property or personnel of the one for whom a test is made, or for any loss suffered or sustained, directly or indirectly, through the use of its equipment, or its statements or opinion concerning the results of any test, tools lost or damaged in the hole shall be paid for at cost by the party for whom the test is made.



TRILOBITE TESTING INC.

1515 Commerce Parkway • Hays, Kansas 67601

Test Ticket

NO. 50480

Well Name & No. Art Todd # 1-20 Test No. 2 Date 4-23-13
 Company Herman L. Loeb, LLC. Elevation 2207 KB 2196 GL
 Address P.O. Box 838 Lawrenceville, IL 62439
 Co. Rep / Geo. Jon Christensen Rig Sterling # 2
 Location: Sec. 20 Twp. 27s. Rge. 18w. Co. Kiowa State KS

Interval Tested 4392'-4414' Zone Tested K.C. "I"
 Anchor Length 22' Drill Pipe Run 4174 Mud Wt. 9.1+
 Top Packer Depth 4387 Drill Collars Run 216 Vis 70
 Bottom Packer Depth 4392 Wt. Pipe Run Ø WL 10.8
 Total Depth 4414 Chlorides 8200 ppm System LCM 1 #

Blow Description IF: Strong blow. BOB 2 min. No GTS.
ISI: Weak blow. Surf - 2" - 1"
FF: Strong blow. BOB immed. GTS @ 14 min. Graged gas throughout.
FSI: Strong BB. BOB @ 54 min.

Rec	Feet of	%gas	%oil	%water	%mud
<u>275</u>	<u>SLI WLGMO</u>	<u>20</u>	<u>56</u>	<u>4</u>	<u>20</u>
<u>120</u>	<u>MWLO</u>	<u>85</u>	<u>12</u>	<u>3</u>	<u>3</u>
<u> </u>	<u>(No enough wtr. to get RW)</u>	<u> </u>	<u> </u>	<u> </u>	<u> </u>
<u> </u>	<u> </u>	<u> </u>	<u> </u>	<u> </u>	<u> </u>
<u> </u>	<u> </u>	<u> </u>	<u> </u>	<u> </u>	<u> </u>

Rec Total 395 BHT 117 Gravity 43 API RW N/C @ N/C °F Chlorides 94000? ppm
 (A) Initial Hydrostatic 2351 Test 1250 T-On Location 0920
 (B) First Initial Flow 36 Jars T-Started 0938
 (C) First Final Flow 66 Safety Joint 75 T-Open 1153
 (D) Initial Shut-In 1248 Circ Sub T-Pulled 1510
 (E) Second Initial Flow 66 Hourly Standby T-Out 1751
 (F) Second Final Flow 154 Mileage 81 125.55 Comments
 (G) Final Shut-In 1240 Sampler
 (H) Final Hydrostatic 2199 Straddle
 Shale Packer
 Shale Packer
 Extra Packer
 Extra Recorder
 Day Standby 1 Day 10.5h
 Accessibility
 Sub Total 1450.55

Initial Open 15
 Initial Shut-In 45
 Final Flow 45
 Final Shut-In 90
 Sub Total 1450.55

Approved By [Signature] Our Representative [Signature]
 Trilobite Testing Inc. shall not be liable for damaged of any kind of the property or personnel of the one for whom a test is made, or for any loss suffered or sustained, directly or indirectly, through the use of its equipment, or its statements or opinion concerning the results of any test, tools lost or damaged in the hole shall be paid for at cost by the party for whom the test is made.



TRILOBITE TESTING INC.

1515 Commerce Parkway • Hays, Kansas 67601

Test Ticket

NO. 50481

4/10

Well Name & No. Art Todd # 1-20 Test No. 3 Date 4-25-13
 Company Herman L. Loeb, LLC. Elevation 2207 KB 2196 GL
 Address P.O. Box 838 Lawrenceville, IL. 62439
 Co. Rep / Geo. Jon Christensen Rig Sterling # 2
 Location: Sec. 20 Twp. 27s. Rge. 18w. Co. Kiowa State KS

Interval Tested 4739-4802 Zone Tested Miss. Chert
 Anchor Length 63 Drill Pipe Run 4525 Mud Wt. 9.0
 Top Packer Depth 4734 Drill Collars Run 216 Vis 59
 Bottom Packer Depth 4739 Wt. Pipe Run Ø WL 8.0
 Total Depth 4802 Chlorides 5000 ppm System LCM 2#

Blow Description IF: Strong blow. BOB @ 1 min. No GTS.
ISI: Weak surf. blow
FF: Strong blow. BOB @ 10 sec. GTS @ 28min.
FSI: No blow

Rec	Feet of	%gas	%oil	%water	%mud
<u>30</u>	<u>150</u>	<u>SLI OCGM</u>	<u>4</u>	<u>1</u>	<u>95</u>
<u>60</u>	<u>Feet of</u>	<u>(Spots of oil in hyd. tool)</u>			
<u>70</u>	<u>Feet of</u>				
<u>80</u>	<u>Feet of</u>				
<u>90</u>	<u>Feet of</u>				

Rec Total 150 BHT 125 Gravity M/C API RW N/C @ N/C °F Chlorides 5000 ppm

(A) Initial Hydrostatic 2532 Test 1250 T-On Location 0430
 (B) First Initial Flow 41 Jars _____ T-Started 0620
 (C) First Final Flow 58 Safety Joint 75 T-Open 0844
 (D) Initial Shut-In 1319 Circ Sub _____ T-Pulled 1203
 (E) Second Initial Flow 52 Hourly Standby _____ T-Out 1441
 (F) Second Final Flow 61 Mileage 125.55 Comments _____
 (G) Final Shut-In 1430 Sampler _____
 (H) Final Hydrostatic 2377 Straddle _____
 Shale Packer _____
 Extra Packer _____
 Extra Recorder _____
 Day Standby 1d 10.75h
 Accessibility _____

Initial Open 15
 Initial Shut-In 45
 Final Flow 45
 Final Shut-In 90

Sub Total 1450.55

Sub Total 358.33
 Total 1808.88
 MP/DST Disc't _____

Approved By [Signature] Our Representative Ryan Reynolds

Trilobite Testing Inc. shall not be liable for damaged of any kind of the property or personnel of the one for whom a test is made, or for any loss suffered or sustained, directly or indirectly, through the use of its equipment, or its statements or opinion concerning the results of any test, tools lost or damaged in the hole shall be paid for at cost by the party for whom the test is made.

