

DRILL STEM TEST REPORT

Prepared For: **Stelbar Oil Corp., Inc.**

1625 N. Parkway Ste. 200
Wichita, KS 67206

ATTN: Dave Goldak

S2-31s-41w Morton,KS

Johns Enterprise #2-2

Start Date: 2013.04.27 @ 01:38:00

End Date: 2013.04.27 @ 11:16:49

Job Ticket #: 51739 DST #: 1

Trilobite Testing, Inc

PO Box 362 Hays, KS 67601

ph: 785-625-4778 fax: 785-625-5620

Printed: 2013.04.30 @ 08:41:45

Stelbar Oil Corp., Inc.

Johns Enterprise #2-2

S2-31s-41w Morton,KS

DST # 1

Lower Morrow

2013.04.27



**TRILOBITE
TESTING, INC.**

DRILL STEM TEST REPORT

Stelbar Oil Corp., Inc.
1625 N. Parkway Ste. 200
Wichita, KS 67206
ATTN: Dave Goldak

Johns Enterprise #2-2
S2-31s-41w Morton, KS
Job Ticket: 51739 DST#: 1
Test Start: 2013.04.27 @ 01:38:00

GENERAL INFORMATION:

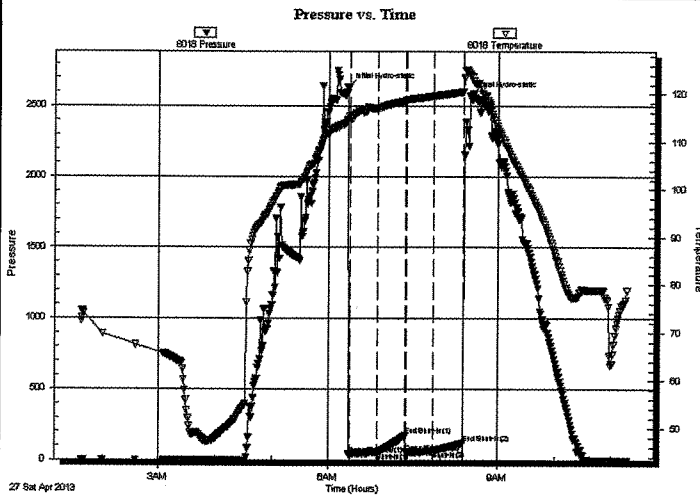
Formation: **Lower Morrow**
Deviated: No Whipstock: ft (KB)
Time Tool Opened: 06:22:30
Time Test Ended: 11:16:49
Interval: **5280.00 ft (KB) To 5434.00 ft (KB) (TVD)**
Total Depth: **5434.00 ft (KB) (TVD)**
Hole Diameter: **7.88 inches** Hole Condition: Good
Test Type: Conventional Bottom Hole (Initial)
Tester: Chuck Smith
Unit No: 62
Reference Elevations: 3379.00 ft (KB)
3366.00 ft (CF)
KB to GR/CF: 13.00 ft

Serial #: 8018

Inside

Press@RunDepth: 65.06 psig @ 5283.00 ft (KB) Capacity: 8000.00 psig
Start Date: 2013.04.27 End Date: 2013.04.27 Last Calib.: 2013.04.27
Start Time: 01:38:02 End Time: 11:16:49 Time On Btm: 2013.04.27 @ 06:20:20
Time Off Btm: 2013.04.27 @ 08:30:20

TEST COMMENT: 2" Blow.
No return.
Surface blow.
No return.



PRESSURE SUMMARY

Time (Min.)	Pressure (psig)	Temp (deg F)	Annotation
0	2635.75	114.39	Initial Hydro-static
3	41.87	115.33	Open To Flow (1)
32	53.67	116.89	Shut-In(1)
62	172.29	118.52	End Shut-In(1)
63	56.80	118.66	Open To Flow (2)
92	65.06	119.55	Shut-In(2)
124	119.88	120.45	End Shut-In(2)
131	2573.34	124.33	Final Hydro-static

Recovery

Length (ft)	Description	Volume (bbl)
75.00	M 100m	0.37

Gas Rates

	Choke (inches)	Pressure (psig)	Gas Rate (Mcf/d)



**TRILOBITE
TESTING, INC.**

DRILL STEM TEST REPORT

Stelbar Oil Corp., Inc.
1625 N. Parkway Ste. 200
Wichita, KS 67206
ATTN: Dave Goldak

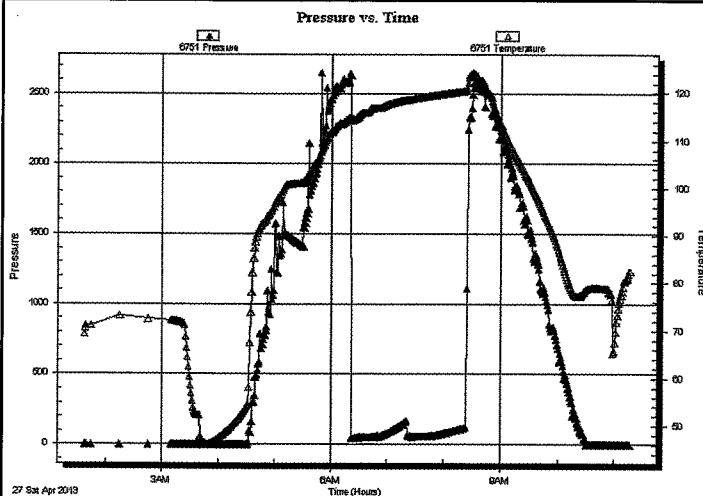
Johns Enterprise #2-2
S2-31s-41w Morton, KS
Job Ticket: 51739 **DST#: 1**
Test Start: 2013.04.27 @ 01:38:00

GENERAL INFORMATION:

Formation: Lower Morrow	Test Type: Conventional Bottom Hole (Initial)
Deviated: No Whipstock: ft (KB)	Tester: Chuck Smith
Time Tool Opened: 06:22:30	Unit No: 62
Time Test Ended: 11:16:49	Reference Elevations: 3379.00 ft (KB)
Interval: 5280.00 ft (KB) To 5434.00 ft (KB) (TVD)	3366.00 ft (CF)
Total Depth: 5434.00 ft (KB) (TVD)	KB to GR/CF: 13.00 ft
Hole Diameter: 7.88 inches Hole Condition: Good	

Serial #: 6751 Outside	Capacity: 8000.00 psig
Press@RunDepth: psig @ 5283.00 ft (KB)	Last Calib.: 2013.04.27
Start Date: 2013.04.27 End Date: 2013.04.27	Time On Btm:
Start Time: 01:38:05 End Time: 11:17:00	Time Off Btm:

TEST COMMENT: 2" Blow.
No return.
Surface blow.
No return.



PRESSURE SUMMARY

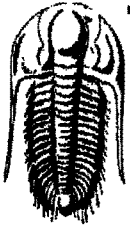
Time (Min.)	Pressure (psig)	Temp (deg F)	Annotation

Recovery

Length (ft)	Description	Volume (bbl)
75.00	M 100m	0.37

Gas Rates

Choke (inches)	Pressure (psig)	Gas Rate (Mcf/d)



**TRILOBITE
TESTING, INC.**

DRILL STEM TEST REPORT

TOOL DIAGRAM

Stelbar Oil Corp., Inc.
1625 N. Parkway Ste. 200
Wichita, KS 67206

ATTN: Dave Goldak

Johns Enterprise #2-2
S2-31s-41w Morton,KS
Job Ticket: 51739 DST#: 1
Test Start: 2013.04.27 @ 01:38:00

Tool Information

Drill Pipe:	Length: 4938.00 ft	Diameter: 3.80 inches	Volume: 69.27 bbl	Tool Weight: 2300.00 lb
Heavy Wt. Pipe:	Length: 0.00 ft	Diameter: inches	Volume: 0.00 bbl	Weight set on Packer: 22000.00 lb
Drill Collar:	Length: 330.00 ft	Diameter: 2.25 inches	Volume: 1.62 bbl	Weight to Pull Loose: 140000.0 lb
			<u>Total Volume: 70.89 bbl</u>	Tool Chased 0.00 ft
Drill Pipe Above KB:	17.50 ft			String Weight: Initial 90000.00 lb
Depth to Top Packer:	5280.00 ft			Final 91000.00 lb
Depth to Bottom Packer:	ft			
Interval between Packers:	154.00 ft			
Tool Length:	183.50 ft			
Number of Packers:	2	Diameter: 6.75 inches		

Tool Comments: Some packer rubber is in the hole.

Tool Description	Length (ft)	Serial No.	Position	Depth (ft)	Accum. Lengths
Change Over Sub	1.00			5251.50	
Shut In Tool	5.00			5256.50	
Sampler	2.00			5258.50	
Hydraulic tool	5.00			5263.50	
Jars	5.00			5268.50	
Safety Joint	2.50			5271.00	
Packer	5.00			5276.00	29.50 Bottom Of Top Packer
Packer	4.00			5280.00	
Stubb	1.00			5281.00	
Perforations	2.00			5283.00	
Recorder	0.00	8018	Inside	5283.00	
Recorder	0.00	6751	Outside	5283.00	
Perforations	20.00			5303.00	
Change Over Sub	1.00			5304.00	
Drill Pipe	126.00			5430.00	
Change Over Sub	1.00			5431.00	
Bullnose	3.00			5434.00	154.00 Bottom Packers & Anchor
Total Tool Length:	183.50				



**TRILOBITE
TESTING, INC.**

DRILL STEM TEST REPORT

FLUID SUMMARY

Stelbar Oil Corp., Inc.

Johns Enterprise #2-2

1625 N. Parkway Ste. 200
Wichita, KS 67206

S2-31s-41w Morton, KS

ATTN: Dave Goldak

Job Ticket: 51739

DST#: 1

Test Start: 2013.04.27 @ 01:38:00

Mud and Cushion Information

Mud Type: Gel Chem	Cushion Type:	Oil API:	deg API
Mud Weight: 9.00 lb/gal	Cushion Length: ft	Water Salinity:	ppm
Viscosity: 56.00 sec/qt	Cushion Volume: bbl		
Water Loss: 9.18 in ³	Gas Cushion Type:		
Resistivity: ohm.m	Gas Cushion Pressure: psig		
Salinity: 900.00 ppm			
Filter Cake: 1.00 inches			

Recovery Information

Recovery Table

Length ft	Description	Volume bbl
75.00	M 100m	0.369

Total Length: 75.00 ft Total Volume: 0.369 bbl

Num Fluid Samples: 0

Num Gas Bombs: 0

Serial #:

Laboratory Name:

Laboratory Location:

Recovery Comments: Sampler; 2000 ML mud 40 PSI

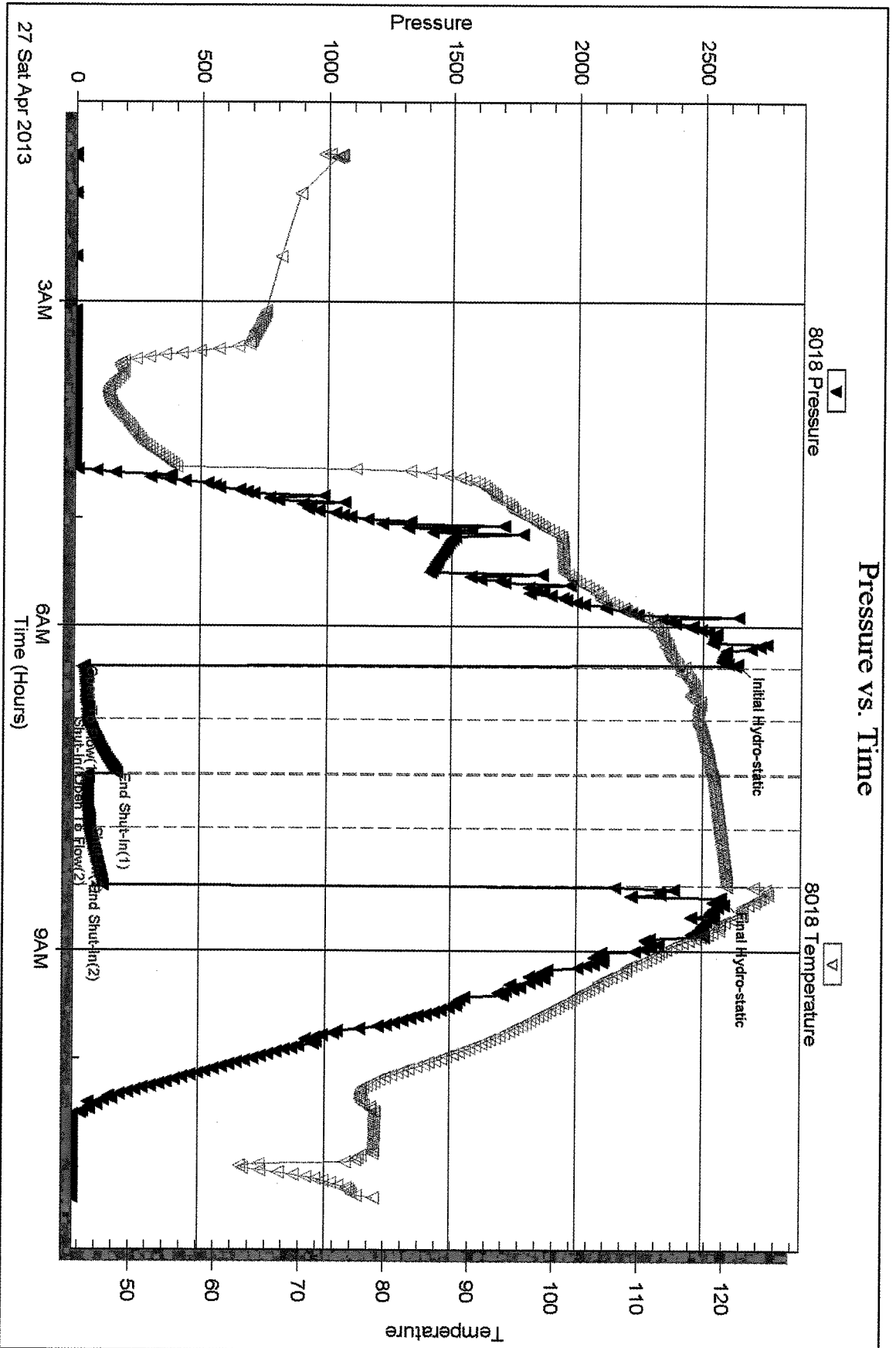
Serial #: 8018

Inside

Stelbar Oil Corp., Inc.

S2-31s-41w Morton, KS

DST Test Number: 1



Trioble Testing, Inc

Ref. No: 51739

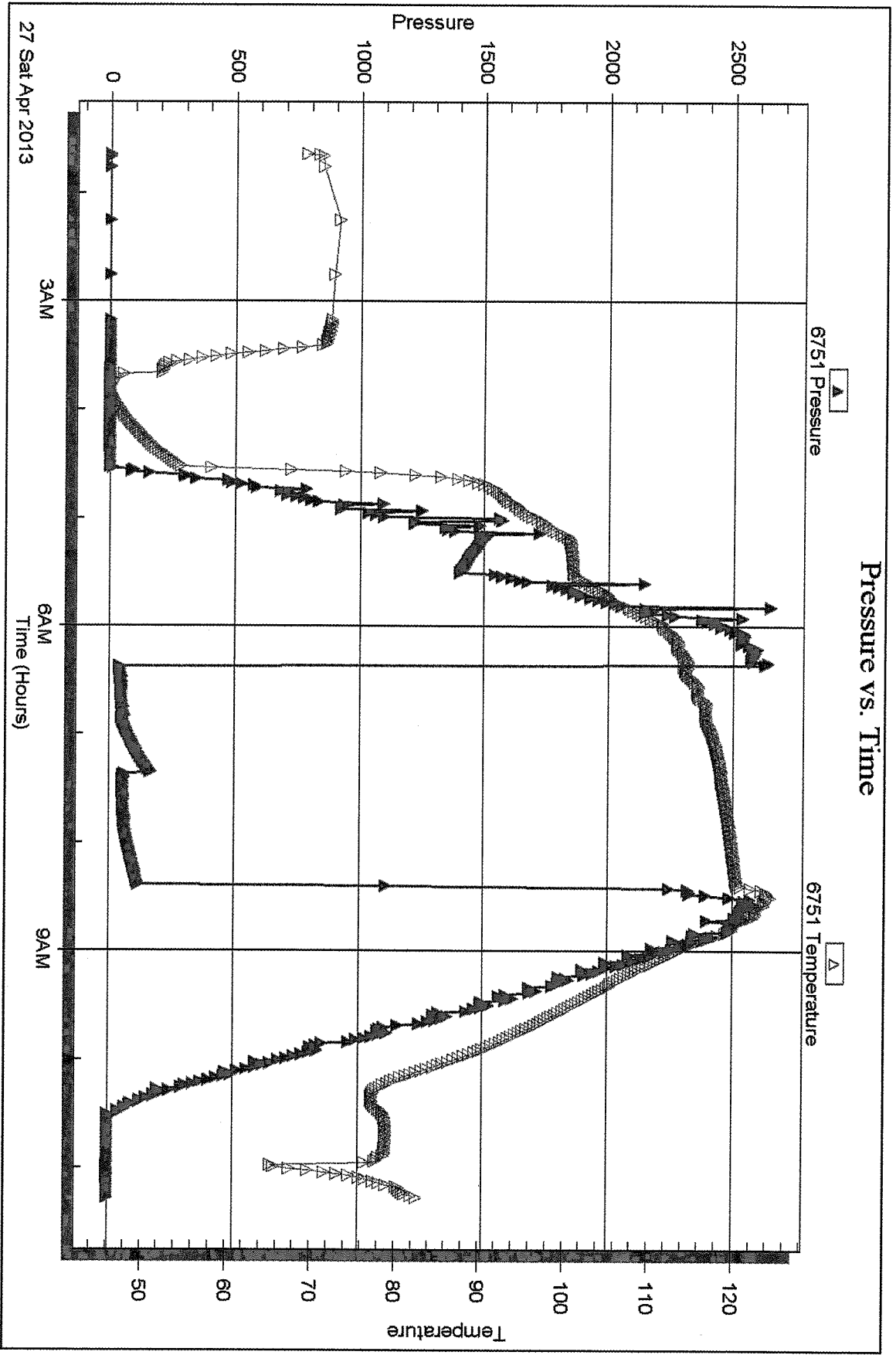
Printed: 2013.04.30 @ 08:41:48

Serial #: 6751

Outside Stebar Oil Corp., Inc.

S2-31s-41w Morton, KS

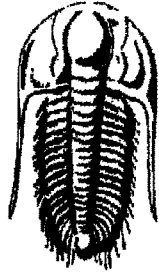
DST Test Number: 1



Tribble Testing, Inc

Ref. No: 51739

Printed: 2013.04.30 @ 08:41:48



**TRILOBITE
TESTING, INC.**

DRILL STEM TEST REPORT

Prepared For: **Stelbar Oil Corp., Inc.**

1625 N. Parkway Ste. 200
Wichita, KS 67206

ATTN: Dave Goldak

S2-31s-41w Morton,KS

Johns Enterprise #2-2

Start Date: 2013.04.28 @ 19:00:00

End Date: 2013.04.29 @ 06:04:49

Job Ticket #: 51740 DST #: 2

Trilobite Testing, Inc

PO Box 362 Hays, KS 67601

ph: 785-625-4778 fax: 785-625-5620

Printed: 2013.04.30 @ 08:41:04

Stelbar Oil Corp., Inc.

Johns Enterprise #2-2

S2-31s-41w Morton,KS

DST # 2

Middle Morrow

2013.04.28



**TRILOBITE
TESTING, INC.**

DRILL STEM TEST REPORT

Stelbar Oil Corp., Inc.
1625 N. Parkway Ste. 200
Wichita, KS 67206
ATTN: Dave Goldak

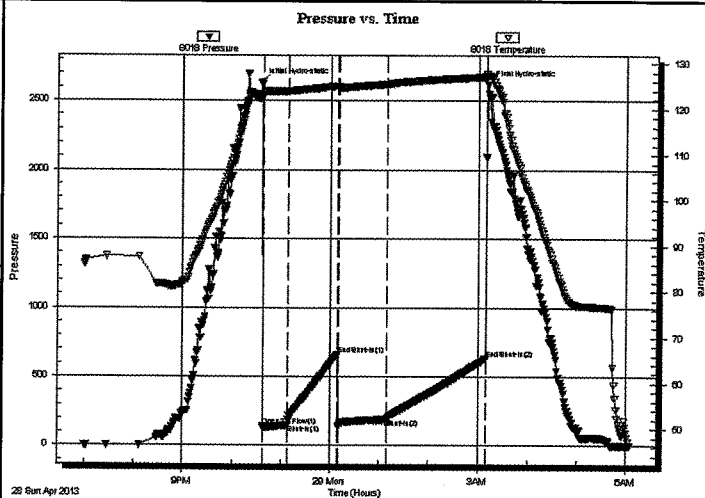
Johns Enterprise #2-2
S2-31s-41w Morton,KS
Job Ticket: 51740 **DST#: 2**
Test Start: 2013.04.28 @ 19:00:00

GENERAL INFORMATION:

Formation: **Middle Morrow**
Deviated: No Whipstock: ft (KB)
Time Tool Opened: 22:38:00
Time Test Ended: 06:04:49
Interval: **5115.00 ft (KB) To 5277.00 ft (KB) (TVD)**
Total Depth: 5520.00 ft (KB) (TVD)
Hole Diameter: 7.88 inches Hole Condition: Good
Test Type: Conventional Straddle (Reset)
Tester: Chuck Smith
Unit No: 62
Reference Elevations: 3379.00 ft (KB)
3366.00 ft (CF)
KB to GR/CF: 13.00 ft

Serial #: 8018 Inside
Press@RunDepth: 190.29 psig @ 5260.00 ft (KB) Capacity: 8000.00 psig
Start Date: 2013.04.28 End Date: 2013.04.29 Last Calib.: 2013.04.29
Start Time: 19:00:02 End Time: 06:04:49 Time On Btm: 2013.04.28 @ 22:35:40
Time Off Btm: 2013.04.29 @ 03:11:39

TEST COMMENT: B.O.B. @ 13 min.
No return.
B.O.B. @ 1 min.
No return.



PRESSURE SUMMARY

Time (Min.)	Pressure (psig)	Temp (deg F)	Annotation
0	2634.62	123.24	Initial Hydro-static
3	142.01	122.75	Open To Flow (1)
33	150.74	123.87	Shut-In(1)
94	663.29	125.00	End Shut-In(1)
95	137.57	124.89	Open To Flow (2)
154	190.29	125.39	Shut-In(2)
275	633.15	127.07	End Shut-In(2)
276	2617.10	127.24	Final Hydro-static

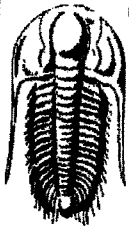
Recovery

Length (ft)	Description	Volume (bbl)
60.00	MW 30m 70w	0.30
60.00	WM 30w 70m	0.30
90.00	M 100m	0.44
0.00	No visible or odor of gas during recover	0.00

* Recovery from multiple tests

Gas Rates

	Choke (inches)	Pressure (psig)	Gas Rate (Mcf/d)



TRILOBITE TESTING, INC.

DRILL STEM TEST REPORT

Stelbar Oil Corp., Inc.
 1625 N. Parkway Ste. 200
 Wichita, KS 67206
 ATTN: Dave Goldak

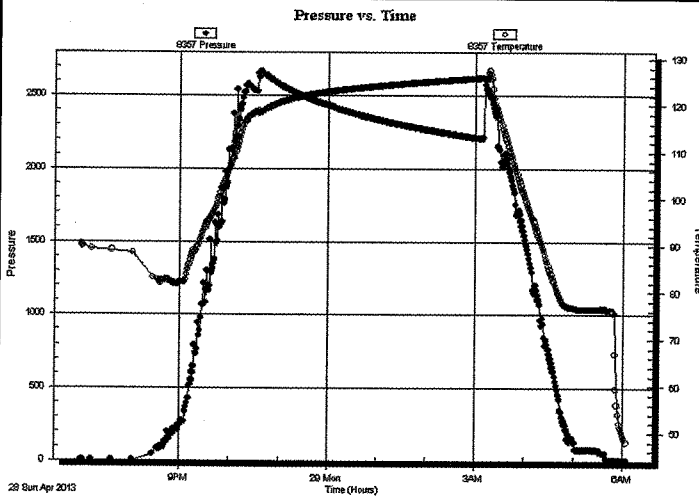
Johns Enterprise #2-2
S2-31s-41w Morton, KS
 Job Ticket: 51740 **DST#: 2**
 Test Start: 2013.04.28 @ 19:00:00

GENERAL INFORMATION:

Formation: Middle Morrow
Deviated: No Whipstock: ft (KB)
Time Tool Opened: 22:38:00
Time Test Ended: 06:04:49
Interval: 5115.00 ft (KB) To 5277.00 ft (KB) (TVD)
Total Depth: 5520.00 ft (KB) (TVD)
Hole Diameter: 7.88 inches **Hole Condition:** Good
Test Type: Conventional Straddle (Reset)
Tester: Chuck Smith
Unit No: 62
Reference Elevations: 3379.00 ft (KB)
 3366.00 ft (CF)
KB to GR/CF: 13.00 ft

Serial #: 8357 Below (Straddle)
Press@RunDepth: psig @ 5292.00 ft (KB)
Start Date: 2013.04.28 **End Date:** 2013.04.29
Start Time: 19:00:05 **End Time:** 06:05:00
Capacity: 8000.00 psig
Last Calib.: 2013.04.29
Time On Btm:
Time Off Btm:

TEST COMMENT: B.O.B. @ 13 min.
 No return.
 B.O.B. @ 1 min.
 No return.



PRESSURE SUMMARY

Time (Min.)	Pressure (psig)	Temp (deg F)	Annotation

Recovery

Length (ft)	Description	Volume (bbl)
60.00	MW 30m 70w	0.30
60.00	WM 30w 70m	0.30
90.00	M 100m	0.44
0.00	No visible or odor of gas during recover	0.00

* Recovery from multiple tests

Gas Rates

Choke (Inches)	Pressure (psig)	Gas Rate (Mcf/d)



**TRILOBITE
TESTING, INC.**

DRILL STEM TEST REPORT

TOOL DIAGRAM

Stelbar Oil Corp., Inc.

Johns Enterprise #2-2

1625 N. Parkway Ste. 200
Wichita, KS 67206

S2-31s-41w Morton, KS

Job Ticket: 51740

DST#: 2

ATTN: Dave Goldak

Test Start: 2013.04.28 @ 19:00:00

Tool Information

Drill Pipe:	Length: 4779.00 ft	Diameter: 3.80 inches	Volume: 67.04 bbl	Tool Weight: 5000.00 lb
Heavy Wt. Pipe:	Length: 0.00 ft	Diameter: inches	Volume: 0.00 bbl	Weight set on Packer: 30000.00 lb
Drill Collar:	Length: 330.00 ft	Diameter: 2.25 inches	Volume: 1.62 bbl	Weight to Pull Loose: 102000.0 lb
			<u>Total Volume: 68.66 bbl</u>	Tool Chased 0.00 ft
Drill Pipe Above KB:	23.50 ft			String Weight: Initial 98000.00 lb
Depth to Top Packer:	5115.00 ft			Final 10000.00 lb
Depth to Bottom Packer:	5277.00 ft			
Interval between Packers:	162.00 ft			
Tool Length:	434.50 ft			
Number of Packers:	2	Diameter: 6.75 inches		

Tool Comments:

Tool Description

Tool Description	Length (ft)	Serial No.	Position	Depth (ft)	Accum. Lengths
Change Over Sub	1.00			5086.50	
Shut In Tool	5.00			5091.50	
Sampler	2.00			5093.50	
Hydraulic tool	5.00			5098.50	
Jars	5.00			5103.50	
Safety Joint	2.50			5106.00	
Packer	5.00			5111.00	29.50 Bottom Of Top Packer
Packer	4.00			5115.00	
Stubb	1.00			5116.00	
Perforations	15.00			5131.00	
Change Over Sub	1.00			5132.00	
Drill Pipe	127.00			5259.00	
Change Over Sub	1.00			5260.00	
Recorder	0.00	8018	Inside	5260.00	
Recorder	0.00	6751	Outside	5260.00	
Perforations	14.00			5274.00	
top of s pack	3.00			5277.00	162.00 Tool Interval
Packer	0.00			5277.00	
Stubb	1.00			5278.00	
Blank Off Sub	1.00			5279.00	
Perforations	13.00			5292.00	
Recorder	0.00	8357	Below	5292.00	
Change Over Sub	1.00			5293.00	
Drill Pipe	223.00			5516.00	
Change Over Sub	1.00			5517.00	
Bullnose	3.00			5520.00	243.00 Bottom Packers & Anchor
Total Tool Length:	434.50				



**TRILOBITE
TESTING, INC.**

DRILL STEM TEST REPORT

FLUID SUMMARY

Stelbar Oil Corp., Inc.

Johns Enterprise #2-2

1625 N. Parkway Ste. 200
Wichita, KS 67206

S2-31s-41w Morton,KS

Job Ticket: 51740

DST#: 2

ATTN: Dave Goldak

Test Start: 2013.04.28 @ 19:00:00

Mud and Cushion Information

Mud Type: Gel Chem

Cushion Type:

Oil API:

deg API

Mud Weight: 9.00 lb/gal

Cushion Length:

ft

Water Salinity:

90000 ppm

Viscosity: 58.00 sec/qt

Cushion Volume:

bbbl

Water Loss: 8.78 in³

Gas Cushion Type:

Resistivity: ohm.m

Gas Cushion Pressure:

psig

Salinity: 2100.00 ppm

Filter Cake: 1.00 inches

Recovery Information

Recovery Table

Length ft	Description	Volume bbl
60.00	MW 30m 70w	0.295
60.00	WM 30w 70m	0.295
90.00	M 100m	0.443
0.00	No visible or odor of gas during recover	0.000

Total Length: 210.00 ft Total Volume: 1.033 bbl

Num Fluid Samples: 0

Num Gas Bombs: 0

Serial #:

Laboratory Name:

Laboratory Location:

Recovery Comments: Sampler; 750 ML w ater, 1250ML gas, 450 PSI, 8 CU FT gas

RW: .144 @ 43 Degrees F = 90000 PPM

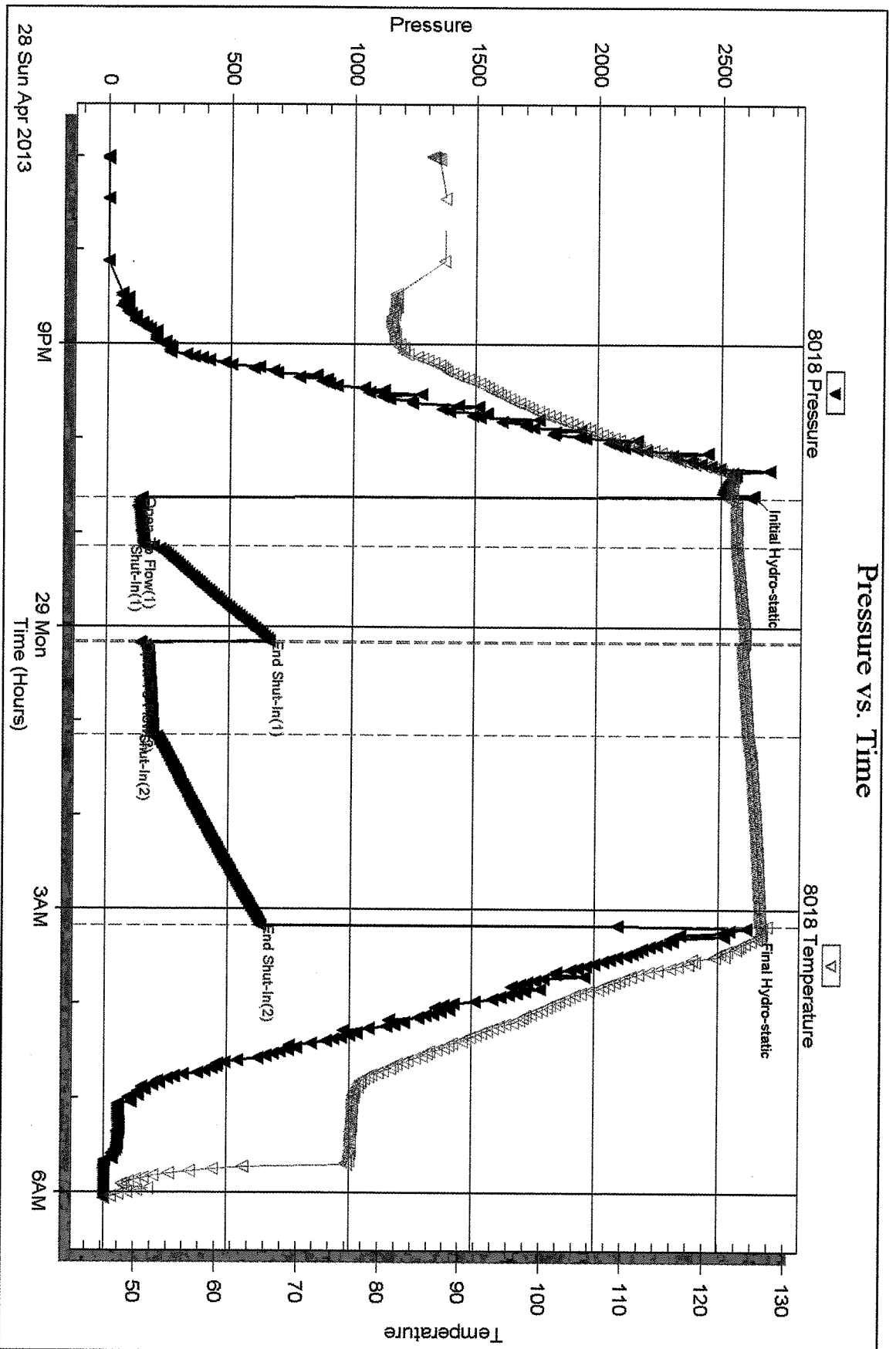
Serial #: 8018

Inside

Stelbar Oil Corp., Inc.

S2-31s-41w Morton, KS

DST Test Number: 2



Tribble Testing, Inc

Ref. No: 51740

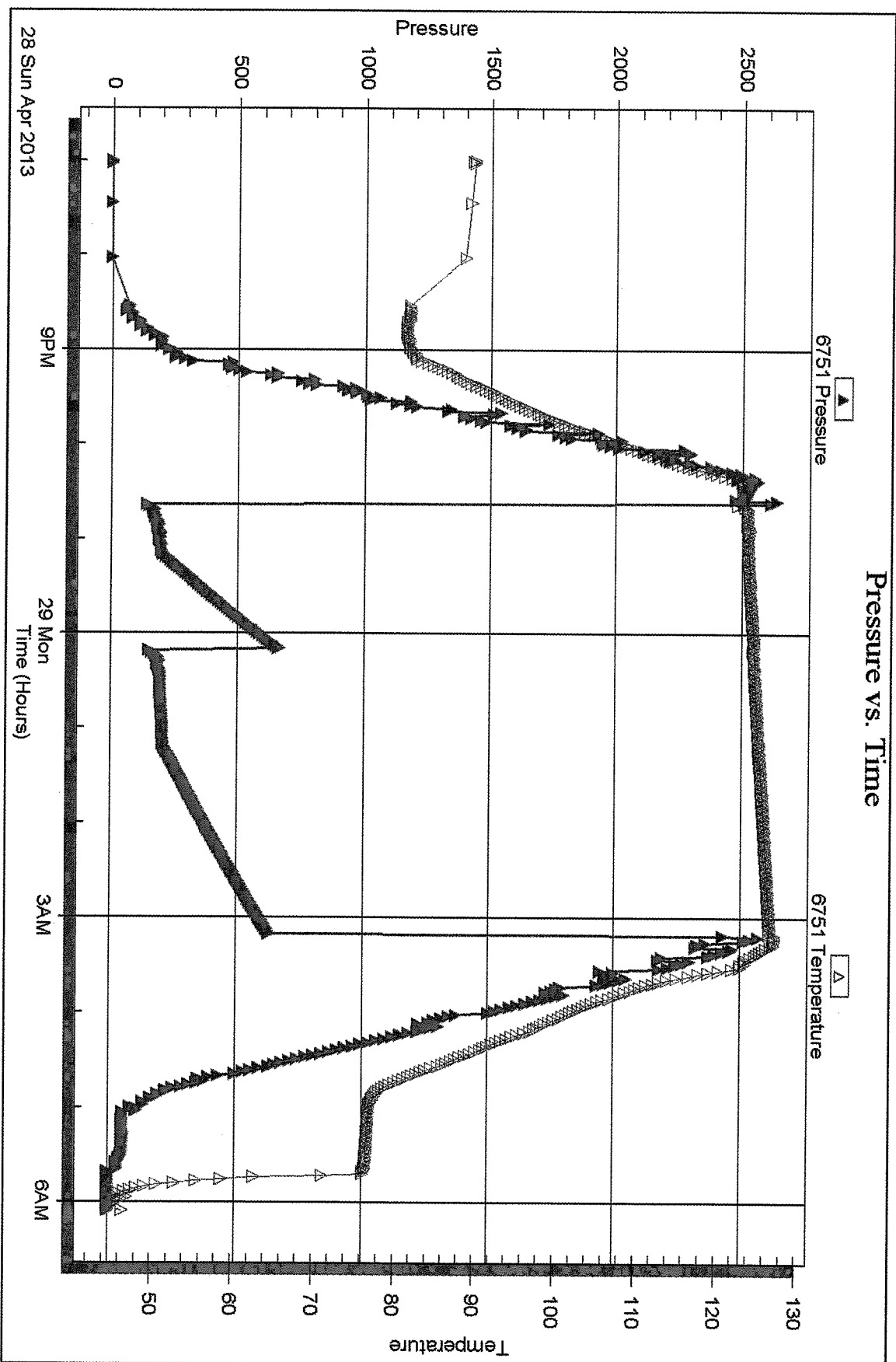
Printed: 2013.04.30 @ 08:41:07

Serial #: 6751

Outside Stebar Oil Corp., Inc.

S2-31s-41w Morton, KS

DST Test Number: 2



Tribble Testing, Inc

Ref. No: 51740

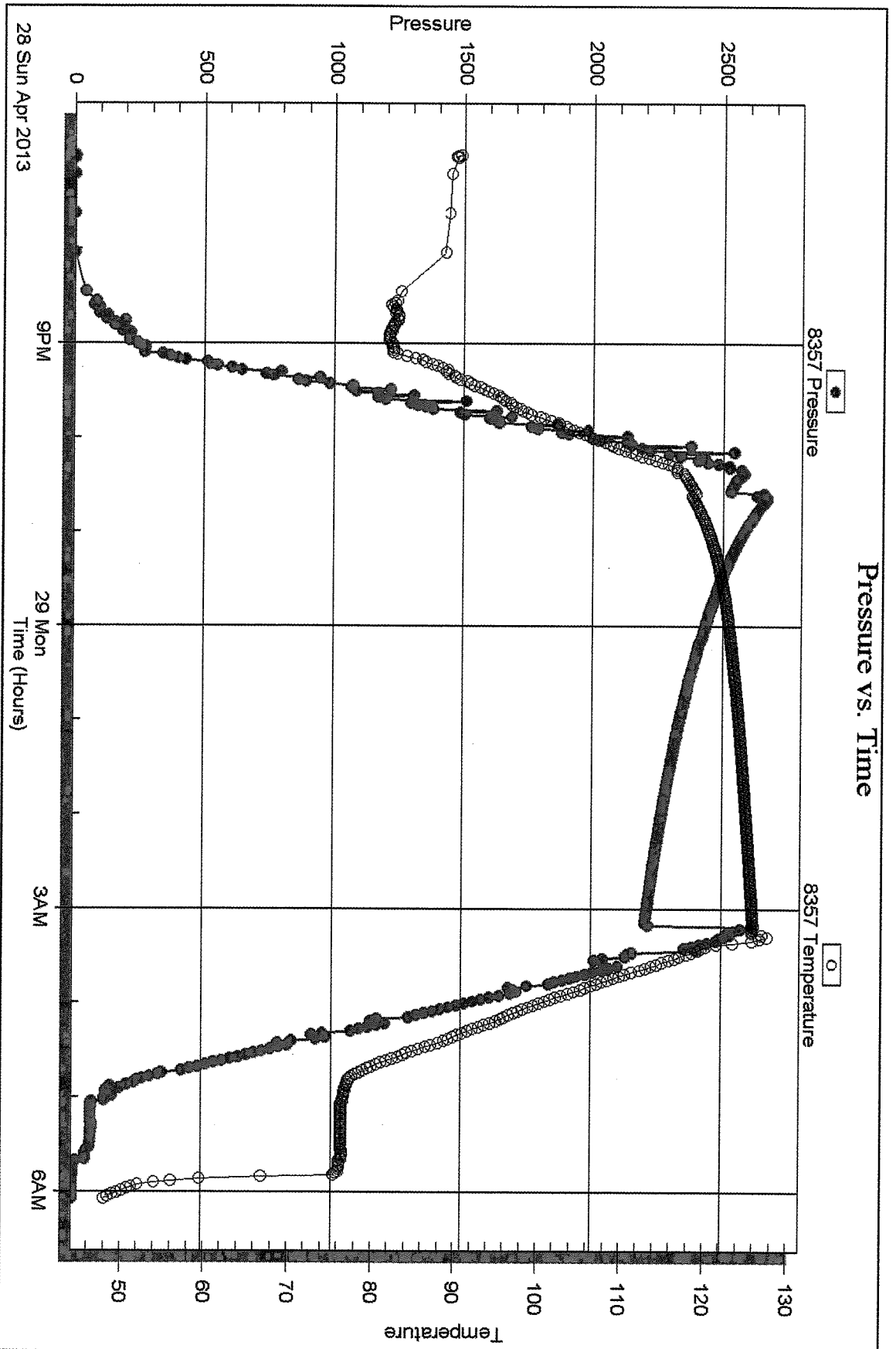
Printed: 2013.04.30 @ 08:41:08

Serial #: 8357

Below (Stratfield) Oil Corp., Inc.

S2-31s-41w Morton, KS

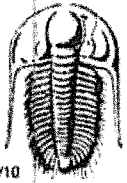
DST Test Number: 2



Triobite Testing, Inc

Ref. No: 51740

Printed: 2013.04.30 @ 08:41:08



TRILOBITE TESTING INC.

1515 Commerce Parkway • Hays, Kansas 67601

Test Ticket

NO. 51739

Well Name & No. Johs Enterprises #2-2 Test No. 1 Date 4-27-13
 Company Stelbar Oil Corp, Inc Elevation 3379 KB 3366 GL
 Address 1625 N. Parkway Ste. 200 Wichita, KS 67206
 Co. Rep / Geo. Dave Goldak Rig STERLING #5
 Location: Sec. 2 Twp. 31E Rge. 4W Co. Morton State KS

Interval Tested 5280-5434 Zone Tested Lower Morrow
 Anchor Length 154 Drill Pipe Run 4938 Mud Wt. 9.1
 Top Packer Depth 5278 Drill Collars Run 330 Vis 56
 Bottom Packer Depth 5280 Wt. Pipe Run 0 WL 9.2
 Total Depth 5434 Chlorides 900 ppm System LCM 7"
 Blow Description 2" Blow
No return.
Surface blow
No return.

Rec	Feet of	%gas	%oil	%water	%mud
Rec	<u>75</u>				<u>100</u>
Rec					
Rec					
Rec					

Rec Total 75 BHT 120 Gravity - API RW @ °F Chlorides - ppm
 (A) Initial Hydrostatic 2634 Test 1350 T-On Location 1:30
 (B) First Initial Flow 42 Jars 250 T-Started 1:38
 (C) First Final Flow 54 Safety Joint 75 T-Open 6:23
 (D) Initial Shut-In 172 Circ Sub N/K T-Pulled 8:24
 (E) Second Initial Flow 57 Hourly Standby T-Out 11:17
 (F) Second Final Flow 65 Mileage 250RT 387.50 Comments Some of packer rubber is in the hole
 (G) Final Shut-In 120 Sampler 250 Ruined Shale Packer
 (H) Final Hydrostatic 2573 Straddle Ruined Packer 320
 Shale Packer Extra Copies
 Extra Packer Sub Total
 Extra Recorder Total 2632.50
 Day Standby MP/DST Disc't
 Accessibility Sub Total 2312.50

Initial Open 30
 Initial Shut-In 30
 Final Flow 30
 Final Shut-In 30
 Approved By [Signature] Our Representative Chuck Smith
 Trilobite Testing Inc. shall not be liable for damaged of any kind of the property or personnel of the one for whom a test is made, or for any loss suffered or sustained, directly or indirectly, through the use of its equipment, or its statements or opinion concerning the results of any test. Tools lost or damaged in the hole shall be paid for at cost by the party for whom the test is made.



TRILOBITE TESTING, INC.

P.O. Box 362 • Hays, Kansas 67601

FLUID SAMPLER DATA

Ticket No. 51739 Date 4-27-13

Company Name Stellar Oil Corp.

Lease Johns Enterprises #2-2 Test No. 1

County Morton, KS Sec. 2 Twp. 3/5 Rng. 4/W

SAMPLER RECOVERY

Gas - ML

Oil - ML

Mud 2000 ML

Water - ML

Other - ML

Pressure 40 PSI ML

Total 2000 ML

PIT MUD ANALYSIS

Chlorides 900 ppm.

Resistivity _____ ohms @ _____ F

Viscosity 56

Mud Weight 9.1

Filtrate 9.2

Other 7" LCM

SAMPLER ANALYSIS

Resistivity _____ ohms @ _____ F

Chlorides 900 ppm.

Gravity _____ corrected @60F

PIPE RECOVERY

TOP

Resistivity _____ ohms @ _____ F

Chlorides _____ ppm.

MIDDLE

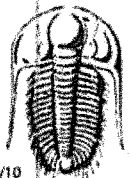
Resistivity _____ ohms @ _____ F

Chlorides _____ ppm.

BOTTOM

Resistivity _____ ohms @ _____ F

Chlorides _____ ppm.



TRILOBITE TESTING INC.

1515 Commerce Parkway • Hays, Kansas 67601

Test Ticket

NO. 51740

Well Name & No. Johns Enterprises #2-2 Test No. 2 Date 4-28-13
 Company Stelbar Oil Corp, Inc Elevation 3379 KB 3366 GL
 Address 1625 N. Parkway Ste. 200 Wichita, KS 67206
 Co. Rep / Geo. Dave Goldak Rig Sterling #5
 Location: Sec. 2 Twp. 31s Rge. 41w Co. Morton State KS

Interval Tested 5115 - 5277 Zone Tested Middle Morrow
 Anchor Length 162 Drill Pipe Run 4779 Mud Wt. 9.15
 Top Packer Depth 5111 Drill Collars Run 330 Vis 58
 Bottom Packer Depth 5277 Wt. Pipe Run 0 WL 8.8
 Total Depth 5520 Chlorides 2100 ppm System LCM 6"

Blow Description B.O.B. @ 13 min
No return.
B.O.B. @ 1 min.
No return.

Rec	Feet of	%gas	%oil	%water	%mud
90	M			100	
60	WM			70	
60	MW			30	

Rec Total 210 BHT 127 Gravity - API RW .144 @ 43 °F Chlorides 90,000 ppm

(A) Initial Hydrostatic 2635 Test 1350 T-On Location 19:00
 (B) First Initial Flow 142 Jars 250 T-Started 19:00
 (C) First Final Flow 151 Safety Joint 75 T-Open 22:38
 (D) Initial Shut-In 663 Circ Sub NIC T-Pulled 3:10
 (E) Second Initial Flow 138 Hourly Standby _____ T-Out 6:05
 (F) Second Final Flow 190 Mileage 387.50 Comments No visible or
 (G) Final Shut-In 633 Sampler 250 Odor of gas in pipe
 (H) Final Hydrostatic 2617 Straddle 600 during recovery.
 Ruined Shale Packer _____

Initial Open 30 Ruined Packer _____
 Initial Shut-In 60 Extra Packer _____
 Final Flow 60 Extra Recorder _____
 Final Shut-In 120 Day Standby _____
 Accessibility _____

Sub Total 3162.50 MP/DST Disc't _____

Approved By [Signature] Our Representative Chuck Smith

Trilobite Testing Inc. shall not be liable for damaged of any kind of the property or personnel of the one for whom a test is made, or for any loss suffered or sustained, directly or indirectly, through the use of its equipment, or its statements or opinion concerning the results of any test, tools lost or damaged in the hole shall be paid for at cost by the party for whom the test is made.



TRILOBITE TESTING, INC.

P.O. Box 362 • Hays, Kansas 67601

FLUID SAMPLER DATA

Ticket No. 51740 Date 4-28-13
 Company Name Stelbar Oil Corp., Inc.
 Lease Johns Enterprises #2-2 Test No. 2
 County Morton, KS Sec. 2 Twp. 31s Rng. 4/w

SAMPLER RECOVERY

PIT MUD ANALYSIS

Gas	<u>1250</u>	ML	Chlorides	<u>2100</u>	ppm.
Oil	<u>-</u>	ML	Resistivity	_____	ohms @ _____ F
Mud	<u>-</u>	ML	Viscosity	<u>58</u>	
Water	<u>750</u>	ML	Mud Weight	<u>9.15</u>	
Other	<u>800 FT gas</u>	-ML	Filtrate	<u>8.8</u>	
Pressure	<u>450 psi</u>	-ML	Other	<u>6" LCM</u>	
Total	<u>2000</u>	ML			

SAMPLER ANALYSIS

PIPE RECOVERY

Resistivity .144 ohms @ 43 F
 Chlorides 90,000 ppm.
 Gravity Γ corrected @ 60F

TOP
 Resistivity _____ ohms @ _____ F
 Chlorides _____ ppm.

MIDDLE
 Resistivity _____ ohms @ _____ F
 Chlorides _____ ppm.

BOTTOM
 Resistivity _____ ohms @ _____ F
 Chlorides _____ ppm.