



TRILOBITE TESTING, INC.

DRILL STEM TEST REPORT

Shakespeare Oil Co, Inc

28 13s 34w Logan, Ks

202 W Main Street
Salem, Il 62881

Pahls # 1-28

Job Ticket: 49174

DST#: 2

ATTN: Tim Priest

Test Start: 2013.04.27 @ 17:51:00

GENERAL INFORMATION:

Formation: **LKC - J**

Deviated: No Whipstock: ft (KB)

Time Tool Opened: 20:07:45

Time Test Ended: 01:23:30

Test Type: Conventional Bottom Hole (Reset)

Tester: Bradley Walter

Unit No: 53

Interval: 4017.00 ft (KB) To 4035.00 ft (KB) (TVD)

Reference Elevations: 2911.00 ft (KB)

Total Depth: 4035.00 ft (KB) (TVD)

2901.00 ft (CF)

Hole Diameter: 7.88 inches Hole Condition: Good

KB to GR/CF: 10.00 ft

Serial #: 8522 Outside

Press @ Run Depth: 95.41 psig @ 4018.00 ft (KB)

Capacity: 8000.00 psig

Start Date: 2013.04.27

End Date:

2013.04.28

Last Calib.:

2013.04.28

Start Time: 17:51:05

End Time:

01:23:29

Time On Btm:

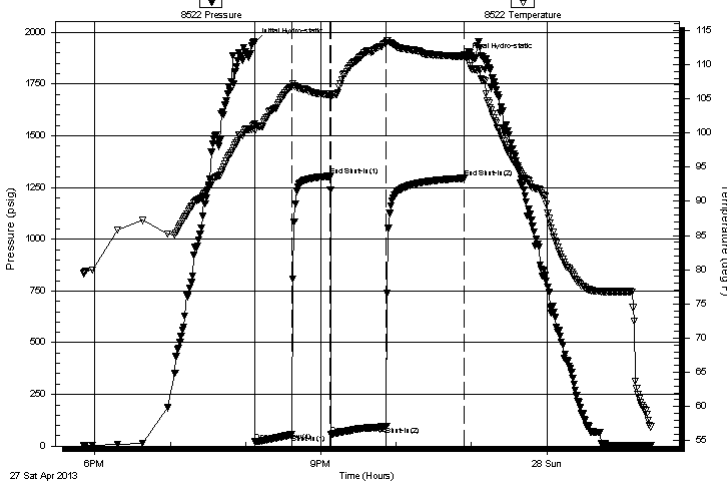
2013.04.27 @ 20:07:30

Time Off Btm:

2013.04.27 @ 22:54:30

TEST COMMENT: IF: 2" blow.
IS: No return.
FF: 2" Blow.
FS: No return.

Pressure vs. Time



PRESSURE SUMMARY

Time (Min.)	Pressure (psig)	Temp (deg F)	Annotation
0	1951.60	101.30	Initial Hydro-static
1	21.08	100.40	Open To Flow (1)
30	55.47	106.84	Shut-In(1)
60	1304.93	105.66	End Shut-In(1)
61	57.39	105.30	Open To Flow (2)
105	95.41	113.26	Shut-In(2)
167	1295.04	111.20	End Shut-In(2)
167	1880.50	111.48	Final Hydro-static

Recovery

Length (ft)	Description	Volume (bbl)
140.00	mcw 25m 75w (oil spots in tool)	0.69

* Recovery from multiple tests

Gas Rates

Choke (inches)	Pressure (psig)	Gas Rate (Mcf/d)



**TRILOBITE
TESTING, INC.**

DRILL STEM TEST REPORT

FLUID SUMMARY

Shakespeare Oil Co, Inc

28 13s 34w Logan, Ks

202 W Main Street
Salem, Il 62881

Pahls # 1-28

Job Ticket: 49174

DST#: 2

ATTN: Tim Priest

Test Start: 2013.04.27 @ 17:51:00

Mud and Cushion Information

Mud Type: Gel Chem

Cushion Type:

Oil API:

0 deg API

Mud Weight: 9.00 lb/gal

Cushion Length:

ft

Water Salinity:

32000 ppm

Viscosity: 45.00 sec/qt

Cushion Volume:

bbbl

Water Loss: 7.20 in³

Gas Cushion Type:

Resistivity: ohm.m

Gas Cushion Pressure:

psig

Salinity: 5000.00 ppm

Filter Cake: 1.00 inches

Recovery Information

Recovery Table

Length ft	Description	Volume bbl
140.00	mcw 25m 75w (oil spots in tool)	0.688

Total Length: 140.00 ft Total Volume: 0.688 bbl

Num Fluid Samples: 0

Num Gas Bombs: 0

Serial #:

Laboratory Name:

Laboratory Location:

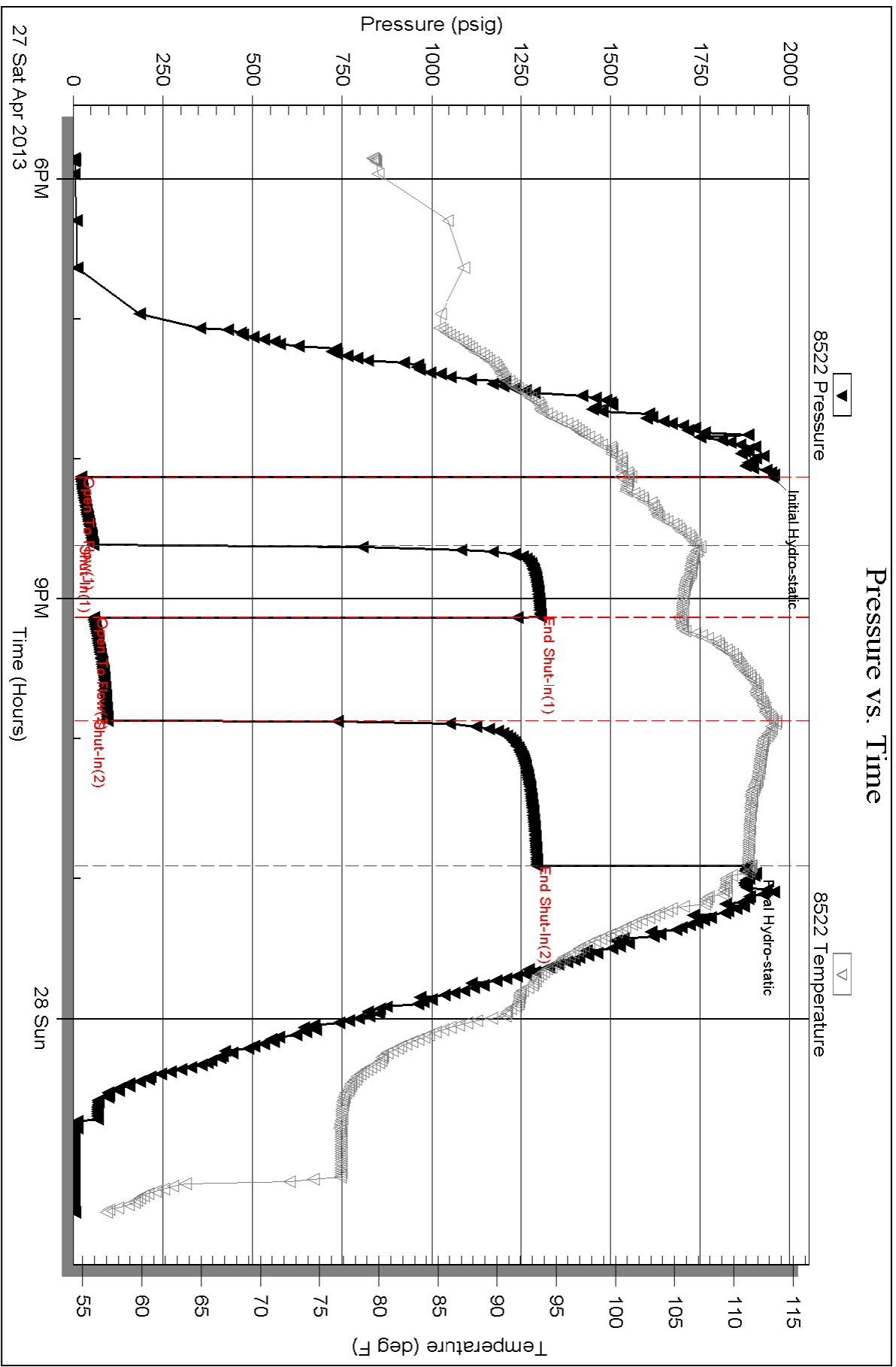
Recovery Comments: rw is .250 @ 58 F = 32000

Serial #: 8522

Outside Shakespeare Oil Co, Inc

Pahls # 1-28

DST Test Number: 2



Triobite Testing, Inc

Ref. No: 49174

Printed: 2013.04.28 @ 06:37:53