



**TRILOBITE
TESTING, INC.**

DRILL STEM TEST REPORT

Shakespeare Oil Co, Inc

28 13s 34w Logan, Ks

202 W Main Street
Salem, Il 62881

Pahls # 1-28

Job Ticket: 53226

DST#: 4

ATTN: Tim Priest

Test Start: 2013.04.29 @ 14:35:00

GENERAL INFORMATION:

Formation: **Marmaton A**

Deviated: No Whipstock: ft (KB)

Time Tool Opened: 16:18:15

Time Test Ended: 22:51:30

Test Type: Conventional Bottom Hole (Reset)

Tester: Bradley Walter

Unit No: 53

Interval: 4165.00 ft (KB) To 4200.00 ft (KB) (TVD)

Reference Elevations: 2911.00 ft (KB)

Total Depth: 4200.00 ft (KB) (TVD)

2901.00 ft (CF)

Hole Diameter: 7.88 inches Hole Condition: Good

KB to GR/CF: 10.00 ft

Serial #: 8522 Outside

Press @ Run Depth: 43.42 psig @ 4166.00 ft (KB)

Capacity: 8000.00 psig

Start Date: 2013.04.29

End Date:

2013.04.29

Last Calib.:

2013.04.29

Start Time: 14:35:05

End Time:

22:51:29

Time On Btm:

2013.04.29 @ 16:18:00

Time Off Btm:

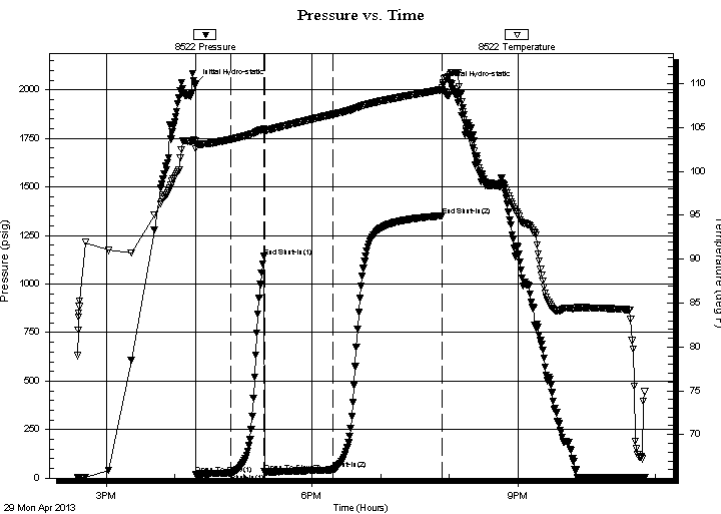
2013.04.29 @ 19:54:45

TEST COMMENT: IF: Weak surface blow, died @ 9 min.

IS: No return.

FF: 3" blow.

FS: No return.



PRESSURE SUMMARY

| Time (Min.) | Pressure (psig) | Temp (deg F) | Annotation |
|-------------|-----------------|--------------|----------------------|
| 0 | 2031.77 | 103.53 | Initial Hydro-static |
| 1 | 20.00 | 102.57 | Open To Flow (1) |
| 31 | 26.58 | 103.66 | Shut-In(1) |
| 60 | 1141.72 | 104.85 | End Shut-In(1) |
| 61 | 32.19 | 104.52 | Open To Flow (2) |
| 120 | 43.42 | 106.50 | Shut-In(2) |
| 216 | 1351.06 | 109.33 | End Shut-In(2) |
| 217 | 2023.75 | 110.15 | Final Hydro-static |

Recovery

| Length (ft) | Description | Volume (bbl) |
|-------------|-----------------------|--------------|
| 60.00 | gsw mco 8g 2w 30m 60o | 0.30 |
| 1.00 | oil 100o | 0.00 |
| 0.00 | 120' GIP | 0.00 |
| | | |
| | | |

* Recovery from multiple tests

Gas Rates

| | Choke (inches) | Pressure (psig) | Gas Rate (Mcf/d) |
|--|----------------|-----------------|------------------|
| | | | |



**TRILOBITE
TESTING, INC.**

DRILL STEM TEST REPORT

FLUID SUMMARY

Shakespeare Oil Co, Inc

28 13s 34w Logan, Ks

202 W Main Street
Salem, Il 62881

Pahls # 1-28

Job Ticket: 53226

DST#: 4

ATTN: Tim Priest

Test Start: 2013.04.29 @ 14:35:00

Mud and Cushion Information

Mud Type: Gel Chem

Cushion Type:

Oil API:

0 deg API

Mud Weight: 9.00 lb/gal

Cushion Length:

ft

Water Salinity:

0 ppm

Viscosity: 48.00 sec/qt

Cushion Volume:

bbbl

Water Loss: 7.99 in³

Gas Cushion Type:

Resistivity: ohm.m

Gas Cushion Pressure:

psig

Salinity: 4400.00 ppm

Filter Cake: 1.00 inches

Recovery Information

Recovery Table

| Length ft | Description | Volume bbbl |
|--------------|-----------------------|----------------|
| 60.00 | gsw mco 8g 2w 30m 60o | 0.295 |
| 1.00 | oil 100o | 0.005 |
| 0.00 | 120' GIP | 0.000 |

Total Length: 61.00 ft Total Volume: 0.300 bbl

Num Fluid Samples: 0

Num Gas Bombs: 0

Serial #:

Laboratory Name:

Laboratory Location:

Recovery Comments:

Pressure vs. Time

