



DRILL STEM TEST REPORT

Prepared For: **Murfin Drilling Co**

250 N Water Ste 300
Wichita KS 67202 + 1216

ATTN: Shauna Gunzelman

Honas Farms #1-1

1-14s-20w Ellis,KS

Start Date: 2013.02.10 @ 17:11:36

End Date: 2013.02.11 @ 00:00:36

Job Ticket #: 50384 DST #: 1

Trilobite Testing, Inc

PO Box 362 Hays, KS 67601

ph: 785-625-4778 fax: 785-625-5620

Printed: 2013.02.26 @ 10:05:22



TRILOBITE TESTING, INC.

DRILL STEM TEST REPORT

Murfin Drilling Co
 250 N Water Ste 300
 Wichita KS 67202 + 1216
 ATTN: Shauna Gunzelman

1-14s-20w Ellis, KS
Honas Farms #1-1
 Job Ticket: 50384 **DST#: 1**
 Test Start: 2013.02.10 @ 17:11:36

GENERAL INFORMATION:

Formation: **Lansing-D-F**
 Deviated: No Whipstock: ft (KB)
 Time Tool Opened: 19:05:06
 Time Test Ended: 00:00:36
 Interval: **3886.00 ft (KB) To 3635.00 ft (KB) (TVD)**
 Total Depth: 3635.00 ft (KB) (TVD)
 Hole Diameter: 7.88 inches Hole Condition: Good
 Test Type: Conventional Bottom Hole (Initial)
 Tester: Jeff Brown
 Unit No: 44
 Reference Elevations: 2235.00 ft (KB)
 2222.00 ft (CF)
 KB to GR/CF: 13.00 ft

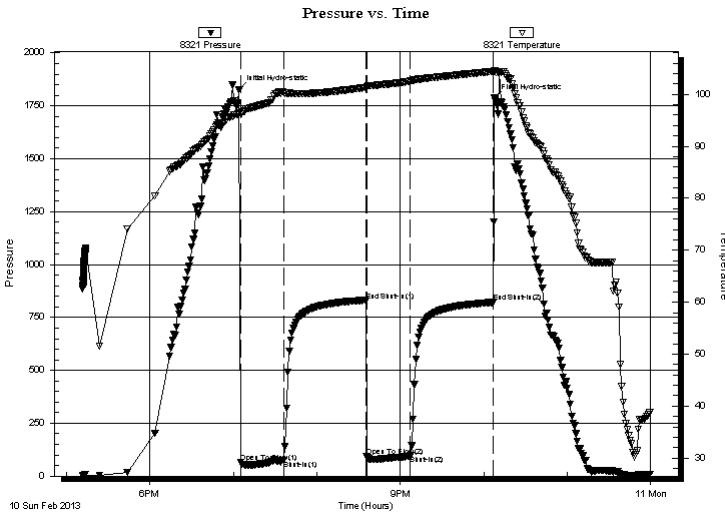
Serial #: 8321

Outside

Press @ Run Depth: 96.69 psig @ 3622.00 ft (KB) Capacity: 8000.00 psig
 Start Date: 2013.02.10 End Date: 2013.02.10 Last Calib.: 2013.02.11
 Start Time: 17:11:37 End Time: 23:59:36 Time On Btm: 2013.02.10 @ 19:04:06
 Time Off Btm: 2013.02.10 @ 22:07:36

TEST COMMENT: IFP=Weak blow built to 2 1/2"
 ISI=Dead no blow back
 FFP=Dead no blow
 FSI=Dead no blow back

PRESSURE SUMMARY



Time (Min.)	Pressure (psig)	Temp (deg F)	Annotation
0	1825.61	96.36	Initial Hydro-static
1	66.25	96.19	Open To Flow (1)
32	75.05	100.36	Shut-In(1)
91	828.53	101.30	End Shut-In(1)
92	93.68	101.30	Open To Flow (2)
123	96.69	102.53	Shut-In(2)
183	821.62	104.42	End Shut-In(2)
184	1786.30	104.61	Final Hydro-static

Recovery

Length (ft)	Description	Volume (bbl)
70.00	Mud	0.34
45.00	MW With oil spots 30%M 70%W	0.22

Gas Rates

Choke (inches)	Pressure (psig)	Gas Rate (Mcf/d)



**TRILOBITE
TESTING, INC.**

DRILL STEM TEST REPORT

Murfin Drilling Co
 250 N Water Ste 300
 Wichita KS 67202 + 1216
 ATTN: Shauna Gunzelman

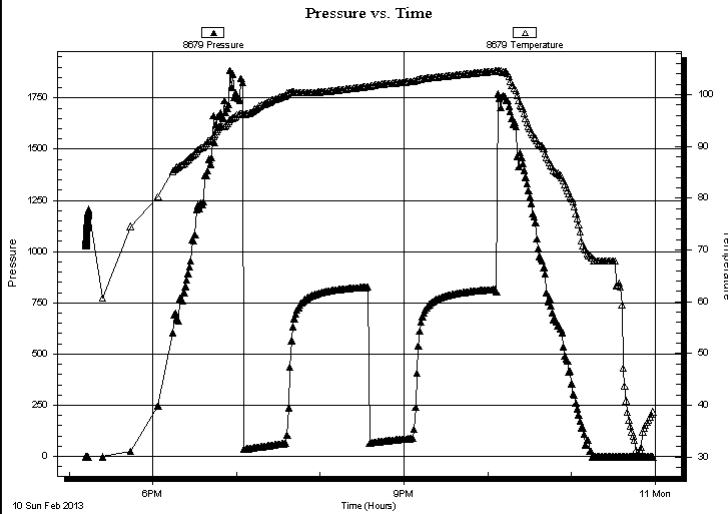
1-14s-20w Ellis,KS
Honas Farms #1-1
 Job Ticket: 50384 **DST#: 1**
 Test Start: 2013.02.10 @ 17:11:36

GENERAL INFORMATION:

Formation: **Lansing-D-F**
 Deviated: No Whipstock: ft (KB)
 Test Type: Conventional Bottom Hole (Initial)
 Time Tool Opened: 19:05:06
 Tester: Jeff Brown
 Time Test Ended: 00:00:36
 Unit No: 44
Interval: 3886.00 ft (KB) To 3635.00 ft (KB) (TVD)
 Reference Elevations: 2235.00 ft (KB)
 Total Depth: 3635.00 ft (KB) (TVD)
 2222.00 ft (CF)
 Hole Diameter: 7.88 inches
 Hole Condition: Good
 KB to GR/CF: 13.00 ft

Serial #: 8679 Inside
 Press @ Run Depth: psig @ 3622.00 ft (KB) Capacity: 8000.00 psig
 Start Date: 2013.02.10 End Date: 2013.02.10 Last Calib.: 2013.02.11
 Start Time: 17:11:48 End Time: 23:58:47 Time On Btm:
 Time Off Btm:

TEST COMMENT: IFP=Weak blow built to 2 1/2"
 ISI=Dead no blow back
 FFP=Dead no blow
 FSI=Dead no blow back



PRESSURE SUMMARY			
Time (Min.)	Pressure (psig)	Temp (deg F)	Annotation

Recovery		
Length (ft)	Description	Volume (bbl)
70.00	Mud	0.34
45.00	MW With oil spots 30%M 70%W	0.22

Gas Rates			
	Choke (inches)	Pressure (psig)	Gas Rate (Mcf/d)



**TRILOBITE
TESTING, INC.**

DRILL STEM TEST REPORT

TOOL DIAGRAM

Murfin Drilling Co

1-14s-20w Ellis, KS

250 N Water Ste 300
Wichita KS 67202 + 1216

Honas Farms #1-1

Job Ticket: 50384

DST#: 1

ATTN: Shauna Gunzelman

Test Start: 2013.02.10 @ 17:11:36

Tool Information

Drill Pipe:	Length: 3352.00 ft	Diameter: 3.80 inches	Volume: 47.02 bbl	Tool Weight: 2000.00 lb
Heavy Wt. Pipe:	Length: 0.00 ft	Diameter: 2.70 inches	Volume: 0.00 bbl	Weight set on Packer: 20000.00 lb
Drill Collar:	Length: 231.00 ft	Diameter: 2.25 inches	Volume: 1.14 bbl	Weight to Pull Loose: 69000.00 lb
			<u>Total Volume: 48.16 bbl</u>	Tool Chased 0.00 ft
Drill Pipe Above KB:	20.00 ft			String Weight: Initial 62000.00 lb
Depth to Top Packer:	3586.00 ft			Final 63000.00 lb
Depth to Bottom Packer:	ft			
Interval between Packers:	49.00 ft			
Tool Length:	72.00 ft			
Number of Packers:	2	Diameter: 6.75 inches		

Tool Comments:

Tool Description

Length (ft) Serial No. Position Depth (ft) Accum. Lengths

Tool Description	Length (ft)	Serial No.	Position	Depth (ft)	Accum. Lengths
Change Over Sub	1.00			3564.00	
Shut In Tool	5.00			3569.00	
Hydraulic tool	5.00			3574.00	
Safety Joint	3.00			3577.00	
Packer	4.00			3581.00	23.00 Bottom Of Top Packer
Packer	5.00			3586.00	
Stubb	1.00			3587.00	
Perforations	2.00			3589.00	
Change Over Sub	1.00			3590.00	
Drill Pipe	31.00			3621.00	
Change Over Sub	1.00			3622.00	
Recorder	0.00	8679	Inside	3622.00	
Recorder	0.00	8321	Outside	3622.00	
Perforations	10.00			3632.00	
Bullnose	3.00			3635.00	49.00 Bottom Packers & Anchor

Total Tool Length: 72.00



**TRILOBITE
TESTING, INC.**

DRILL STEM TEST REPORT

FLUID SUMMARY

Murfin Drilling Co

1-14s-20w Ellis,KS

250 N Water Ste 300
Wichita KS 67202 + 1216

Honas Farms #1-1

Job Ticket: 50384

DST#: 1

ATTN: Shauna Gunzelman

Test Start: 2013.02.10 @ 17:11:36

Mud and Cushion Information

Mud Type: Gel Chem

Cushion Type:

Oil API:

deg API

Mud Weight: 9.00 lb/gal

Cushion Length:

ft

Water Salinity:

ppm

Viscosity: 65.00 sec/qt

Cushion Volume:

bbf

Water Loss: 6.78 in³

Gas Cushion Type:

Resistivity: ohm.m

Gas Cushion Pressure:

psig

Salinity: 5400.00 ppm

Filter Cake: inches

Recovery Information

Recovery Table

Length ft	Description	Volume bbf
70.00	Mud	0.344
45.00	MW With oil spots 30%M 70%W	0.221

Total Length: 115.00 ft

Total Volume: 0.565 bbf

Num Fluid Samples: 0

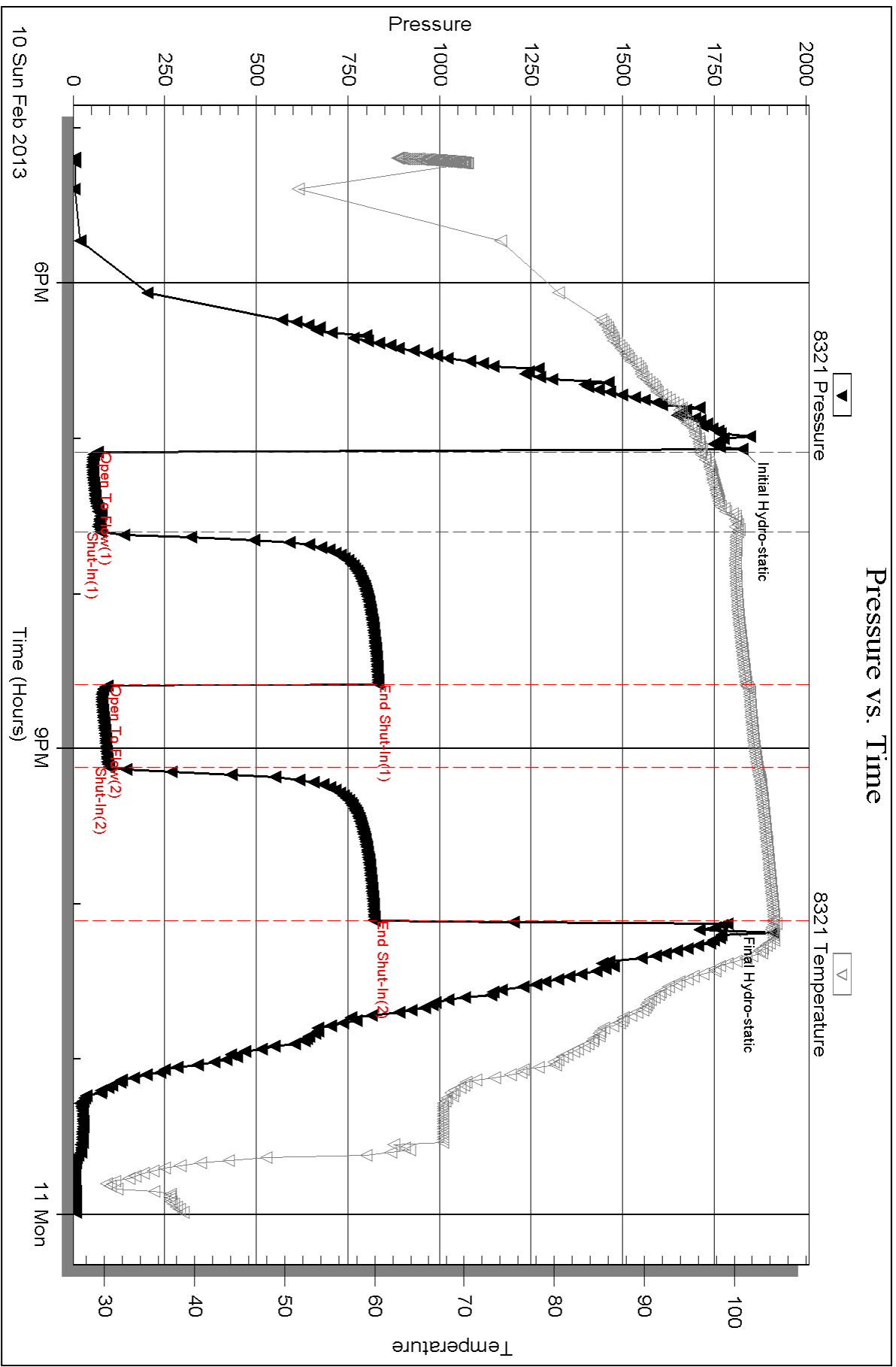
Num Gas Bombs: 0

Serial #:

Laboratory Name:

Laboratory Location:

Recovery Comments:



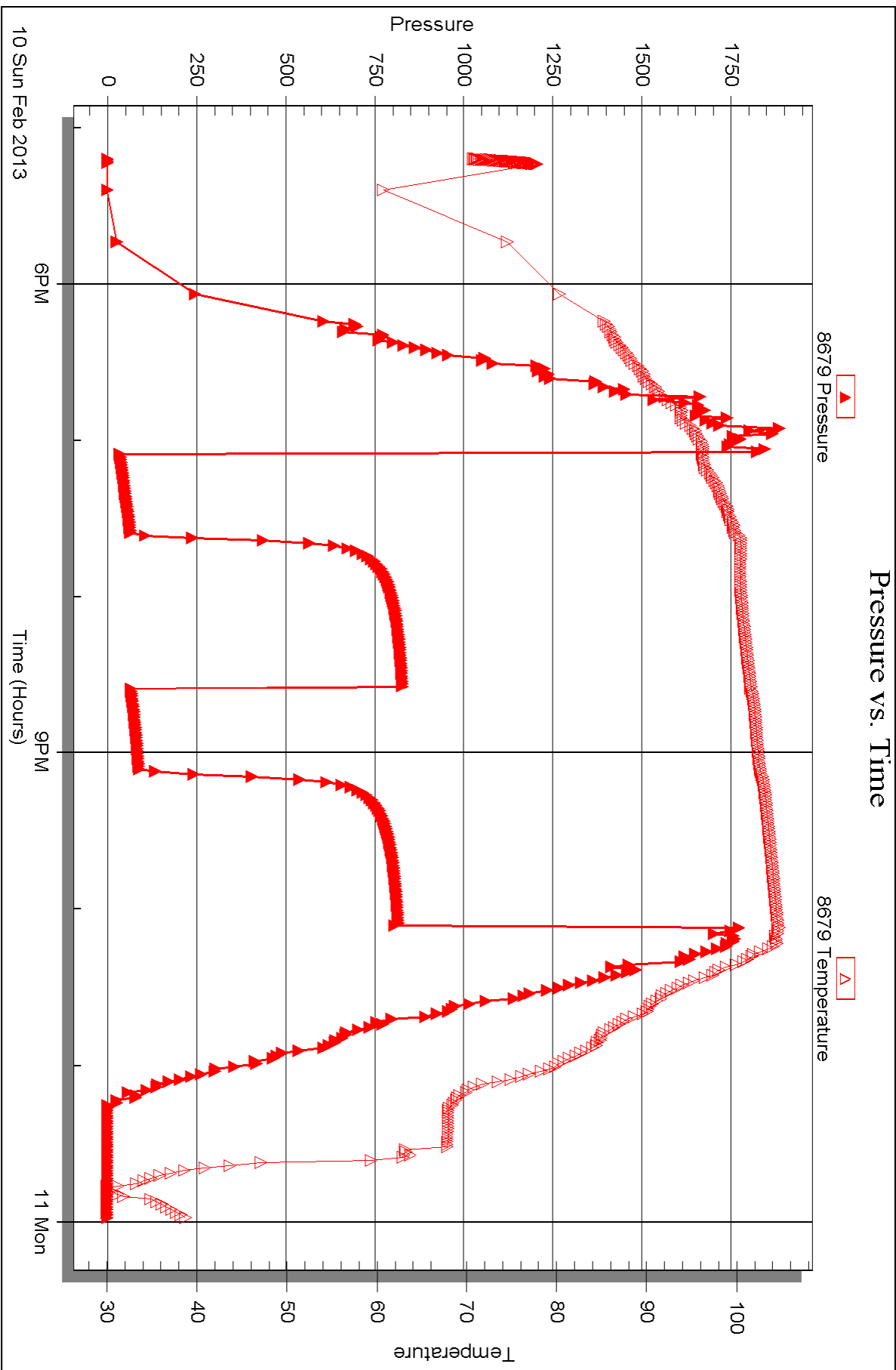
Serial #: 8679

Inside

Murfin Drilling Co

Honas Farms #1-1

DST Test Number: 1





DRILL STEM TEST REPORT

Prepared For: **Murfin Drilling Co**

250 N Water Ste 300
Wichita KS 67202 + 1216

ATTN: Shauna Gunzelman

Honas Farms #1-1

1-14s-20w Ellis,KS

Start Date: 2013.02.11 @ 16:43:50

End Date: 2013.02.11 @ 23:07:50

Job Ticket #: 50385 DST #: 2

Trilobite Testing, Inc
PO Box 362 Hays, KS 67601
ph: 785-625-4778 fax: 785-625-5620

Printed: 2013.02.26 @ 10:03:58



TRILOBITE TESTING, INC.

DRILL STEM TEST REPORT

Murfin Drilling Co
 250 N Water Ste 300
 Wichita KS 67202 + 1216
 ATTN: Shauna Gunzelman

1-14s-20w Ellis, KS
Honas Farms #1-1
 Job Ticket: 50385 **DST#: 2**
 Test Start: 2013.02.11 @ 16:43:50

GENERAL INFORMATION:

Formation: **Lansing I-K**
 Deviated: No Whipstock: ft (KB)
 Time Tool Opened: 18:27:20
 Time Test Ended: 23:07:50
 Interval: **3690.00 ft (KB) To 3765.00 ft (KB) (TVD)**
 Total Depth: 3765.00 ft (KB) (TVD)
 Hole Diameter: 7.88 inches Hole Condition: Good
 Test Type: Conventional Bottom Hole (Reset)
 Tester: Jeff Brown
 Unit No: 44
 Reference Elevations: 2235.00 ft (KB)
 2222.00 ft (CF)
 KB to GR/CF: 13.00 ft

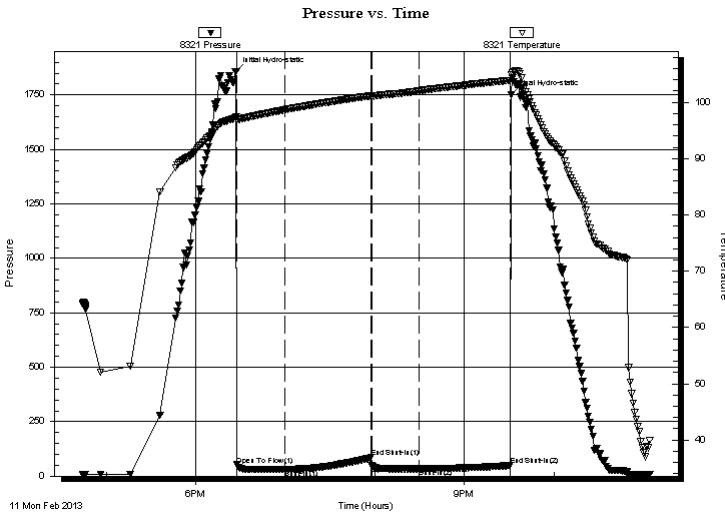
Serial #: 8321

Outside

Press @ Run Depth: 34.05 psig @ 3757.00 ft (KB) Capacity: 8000.00 psig
 Start Date: 2013.02.11 End Date: 2013.02.11 Last Calib.: 2013.02.11
 Start Time: 16:43:51 End Time: 23:04:50 Time On Btm: 2013.02.11 @ 18:26:50
 Time Off Btm: 2013.02.11 @ 21:31:20

TEST COMMENT: IFP=Weak blow built to 3/4"
 ISI=Dead no blow back
 FFP=Dead no blow
 FSI=Dead no blow back

PRESSURE SUMMARY



Time (Min.)	Pressure (psig)	Temp (deg F)	Annotation
0	1858.70	97.36	Initial Hydro-static
1	51.80	96.94	Open To Flow (1)
33	30.72	98.68	Shut-In(1)
91	85.12	101.17	End Shut-In(1)
91	47.85	101.13	Open To Flow (2)
123	34.05	102.03	Shut-In(2)
184	48.32	103.93	End Shut-In(2)
185	1750.02	104.85	Final Hydro-static

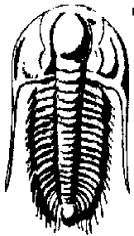
Recovery

Length (ft)	Description	Volume (bbl)
10.00	V SOCM 3%O 97%M	0.05

* Recovery from multiple tests

Gas Rates

Choke (inches)	Pressure (psig)	Gas Rate (Mcf/d)



TRILOBITE TESTING, INC.

DRILL STEM TEST REPORT

Murfin Drilling Co
 250 N Water Ste 300
 Wichita KS 67202 + 1216
 ATTN: Shauna Gunzelman

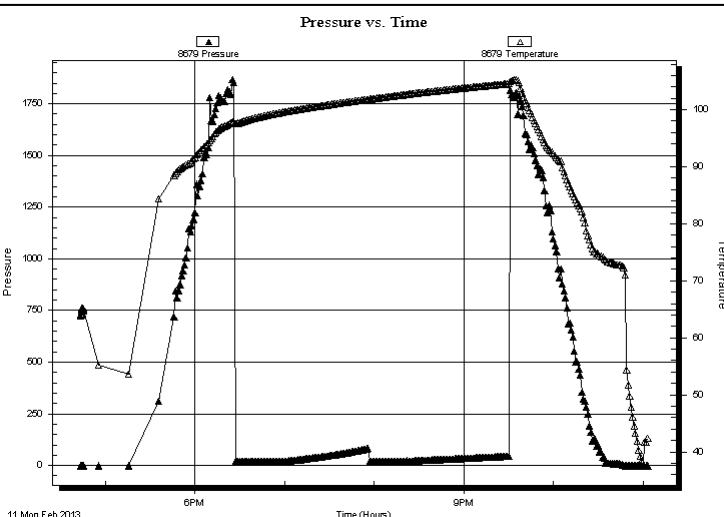
1-14s-20w Ellis,KS
Honas Farms #1-1
 Job Ticket: 50385 **DST#: 2**
 Test Start: 2013.02.11 @ 16:43:50

GENERAL INFORMATION:

Formation: **Lansing I-K**
 Deviated: No Whipstock: ft (KB)
 Test Type: Conventional Bottom Hole (Reset)
 Time Tool Opened: 18:27:20 Tester: Jeff Brown
 Time Test Ended: 23:07:50 Unit No: 44
Interval: 3690.00 ft (KB) To 3765.00 ft (KB) (TVD)
 Reference Elevations: 2235.00 ft (KB)
 Total Depth: 3765.00 ft (KB) (TVD) 2222.00 ft (CF)
 Hole Diameter: 7.88 inches Hole Condition: Good KB to GR/CF: 13.00 ft

Serial #: 8679 Inside
 Press @RunDepth: psig @ 3757.00 ft (KB) Capacity: 8000.00 psig
 Start Date: 2013.02.11 End Date: 2013.02.11 Last Calib.: 2013.02.11
 Start Time: 16:43:25 End Time: 23:03:24 Time On Btm:
 Time Off Btm:

TEST COMMENT: IFP=Weak blow built to 3/4"
 ISI=Dead no blow back
 FFP=Dead no blow
 FSI=Dead no blow back



PRESSURE SUMMARY			
Time (Min.)	Pressure (psig)	Temp (deg F)	Annotation

Recovery		
Length (ft)	Description	Volume (bbl)
10.00	VSOCM 3%O 97%M	0.05

Gas Rates			
	Choke (inches)	Pressure (psig)	Gas Rate (Mcf/d)

* Recovery from multiple tests
 Trilobite Testing, Inc



**TRILOBITE
TESTING, INC.**

DRILL STEM TEST REPORT

TOOL DIAGRAM

Murfin Drilling Co

1-14s-20w Ellis, KS

250 N Water Ste 300
Wichita KS 67202 + 1216

Honas Farms #1-1

Job Ticket: 50385

DST#: 2

ATTN: Shauna Gunzelman

Test Start: 2013.02.11 @ 16:43:50

Tool Information

Drill Pipe:	Length: 3446.00 ft	Diameter: 3.80 inches	Volume: 48.34 bbl	Tool Weight: 2000.00 lb
Heavy Wt. Pipe:	Length: 0.00 ft	Diameter: 2.70 inches	Volume: 0.00 bbl	Weight set on Packer: 20000.00 lb
Drill Collar:	Length: 231.00 ft	Diameter: 2.25 inches	Volume: 1.14 bbl	Weight to Pull Loose: 76000.00 lb
			<u>Total Volume: 49.48 bbl</u>	Tool Chased 0.00 ft
Drill Pipe Above KB:	10.00 ft			String Weight: Initial 64000.00 lb
Depth to Top Packer:	3690.00 ft			Final 64000.00 lb
Depth to Bottom Packer:	ft			
Interval between Packers:	75.00 ft			
Tool Length:	98.00 ft			
Number of Packers:	2	Diameter: 6.75 inches		

Tool Comments:

Tool Description	Length (ft)	Serial No.	Position	Depth (ft)	Accum. Lengths
------------------	-------------	------------	----------	------------	----------------

Change Over Sub	1.00			3668.00	
Shut In Tool	5.00			3673.00	
Hydraulic tool	5.00			3678.00	
Safety Joint	3.00			3681.00	
Packer	4.00			3685.00	23.00 Bottom Of Top Packer
Packer	5.00			3690.00	
Stubb	1.00			3691.00	
Perforations	2.00			3693.00	
Change Over Sub	1.00			3694.00	
Drill Pipe	62.00			3756.00	
Change Over Sub	1.00			3757.00	
Recorder	0.00	8679	Inside	3757.00	
Recorder	0.00	8321	Outside	3757.00	
Perforations	5.00			3762.00	
Bullnose	3.00			3765.00	75.00 Bottom Packers & Anchor

Total Tool Length: 98.00



**TRILOBITE
TESTING, INC.**

DRILL STEM TEST REPORT

FLUID SUMMARY

Murfin Drilling Co

1-14s-20w Ellis,KS

250 N Water Ste 300
Wichita KS 67202 + 1216

Honas Farms #1-1

Job Ticket: 50385

DST#: 2

ATTN: Shauna Gunzelman

Test Start: 2013.02.11 @ 16:43:50

Mud and Cushion Information

Mud Type: Gel Chem

Cushion Type:

Oil API:

deg API

Mud Weight: 9.00 lb/gal

Cushion Length:

ft

Water Salinity:

ppm

Viscosity: 65.00 sec/qt

Cushion Volume:

bbbl

Water Loss: 6.77 in³

Gas Cushion Type:

Resistivity: ohm.m

Gas Cushion Pressure:

psig

Salinity: 5400.00 ppm

Filter Cake: inches

Recovery Information

Recovery Table

Length ft	Description	Volume bbl
10.00	VSOCM 3%O 97%M	0.049

Total Length: 10.00 ft Total Volume: 0.049 bbl

Num Fluid Samples: 0

Num Gas Bombs: 0

Serial #:

Laboratory Name:

Laboratory Location:

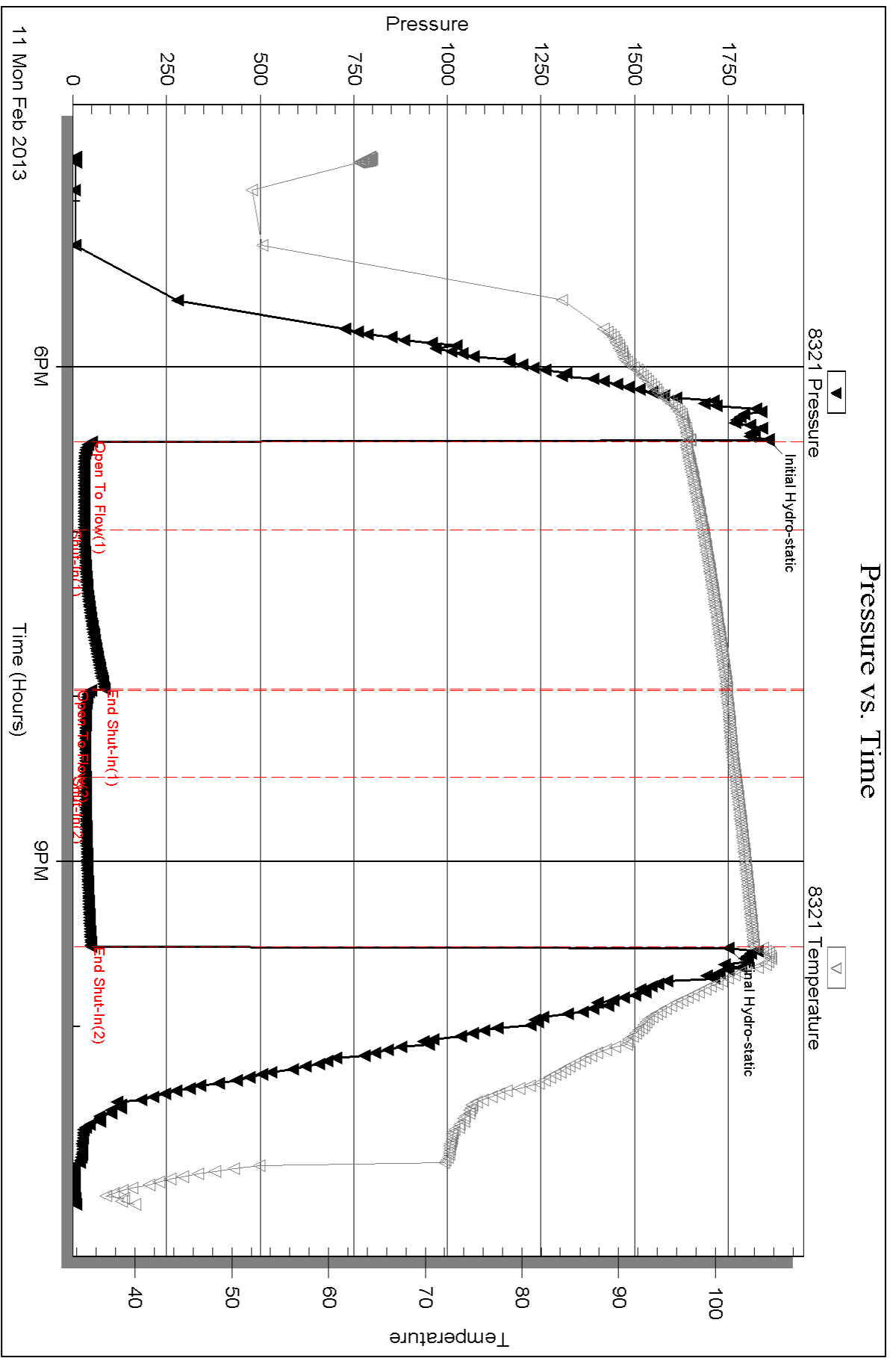
Recovery Comments:

Serial #: 8321

Outside Murfin Drilling Co

Honas Farms #1-1

DST Test Number: 2



11 Mon Feb 2013

Triobite Testing, Inc

Ref. No: 50385

Printed: 2013.02.26 @ 10:04:00

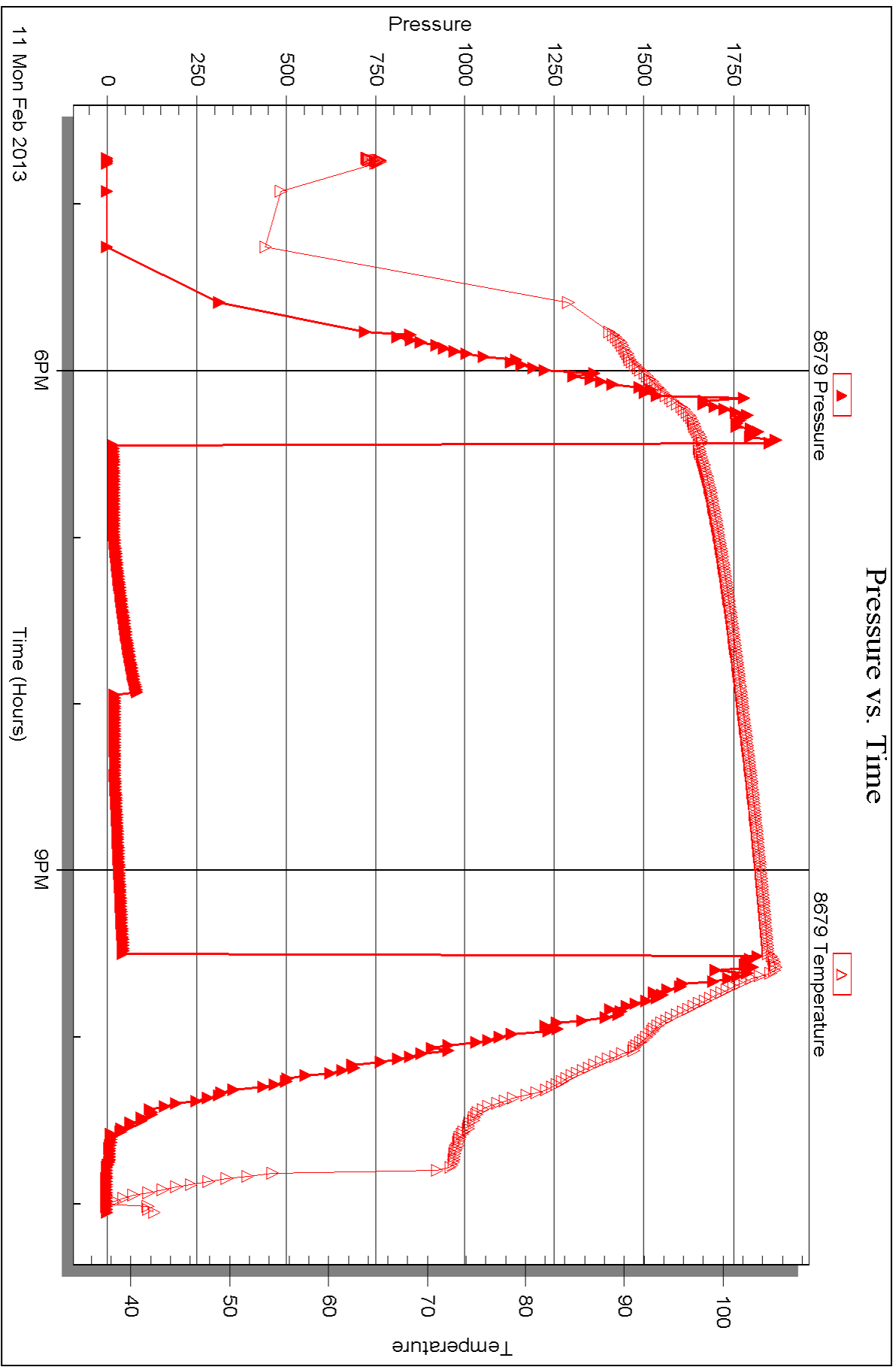
Serial #: 8679

Inside

Murfin Drilling Co

Hornas Farms #1-1

DST Test Number: 2





DRILL STEM TEST REPORT

Prepared For: **Murfin Drilling Co**

250 N Water Ste 300
Wichita KS 67202 + 1216

ATTN: Shauna Gunzelman

Honas Farms #1-1

1-14s-20w Ellis,KS

Start Date: 2013.02.12 @ 16:17:41

End Date: 2013.02.12 @ 23:45:11

Job Ticket #: 50386 DST #: 3

Trilobite Testing, Inc

PO Box 362 Hays, KS 67601

ph: 785-625-4778 fax: 785-625-5620

Printed: 2013.02.26 @ 10:03:11



TRILOBITE TESTING, INC.

DRILL STEM TEST REPORT

Murfin Drilling Co
 250 N Water Ste 300
 Wichita KS 67202 + 1216
 ATTN: Shauna Gunzelman

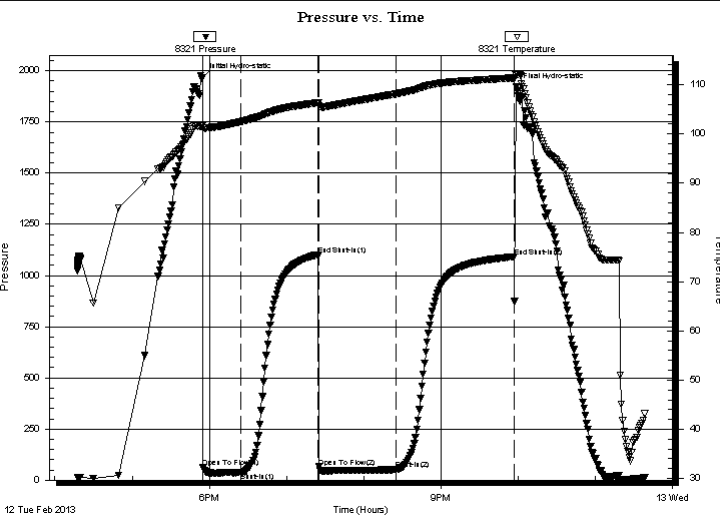
1-14s-20w Ellis, KS
Honas Farms #1-1
 Job Ticket: 50386 **DST#: 3**
 Test Start: 2013.02.12 @ 16:17:41

GENERAL INFORMATION:

Formation: **Conglomerate**
 Deviated: No Whipstock: ft (KB)
 Time Tool Opened: 17:55:11
 Time Test Ended: 23:45:11
 Interval: **3827.00 ft (KB) To 3870.00 ft (KB) (TVD)**
 Total Depth: 3870.00 ft (KB) (TVD)
 Hole Diameter: 7.88 inches Hole Condition: Good
 Test Type: Conventional Bottom Hole (Reset)
 Tester: Jeff Brown
 Unit No: 44
 Reference Elevations: 2235.00 ft (KB)
 2222.00 ft (CF)
 KB to GR/CF: 13.00 ft

Serial #: 8321 Outside
 Press @ Run Depth: 51.21 psig @ 3863.00 ft (KB) Capacity: 8000.00 psig
 Start Date: 2013.02.12 End Date: 2013.02.12 Last Calib.: 2013.02.12
 Start Time: 16:17:42 End Time: 23:38:11 Time On Btm: 2013.02.12 @ 17:54:41
 Time Off Btm: 2013.02.12 @ 21:58:11

TEST COMMENT: IFP=Weak blow built to 1 1/8"
 ISI=Dead no blow back
 FFP=Weak blow built to 2"
 FSI=Dead no blow back



PRESSURE SUMMARY

Time (Min.)	Pressure (psig)	Temp (deg F)	Annotation
0	1965.87	101.65	Initial Hydro-static
1	61.09	101.18	Open To Flow (1)
30	37.15	102.50	Shut-In(1)
90	1098.01	106.35	End Shut-In(1)
91	64.93	105.75	Open To Flow (2)
150	51.21	108.11	Shut-In(2)
242	1091.43	111.39	End Shut-In(2)
244	1919.44	112.06	Final Hydro-static

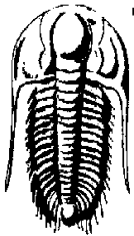
Recovery

Length (ft)	Description	Volume (bbl)
57.00	HOCM 30%O 70%M	0.28
12.00	Free Oil	0.06

* Recovery from multiple tests

Gas Rates

Choke (inches)	Pressure (psig)	Gas Rate (Mcf/d)



TRILOBITE TESTING, INC.

DRILL STEM TEST REPORT

Murfin Drilling Co
 250 N Water Ste 300
 Wichita KS 67202 + 1216
 ATTN: Shauna Gunzelman

1-14s-20w Ellis, KS

Honas Farms #1-1

Job Ticket: 50386

DST#: 3

Test Start: 2013.02.12 @ 16:17:41

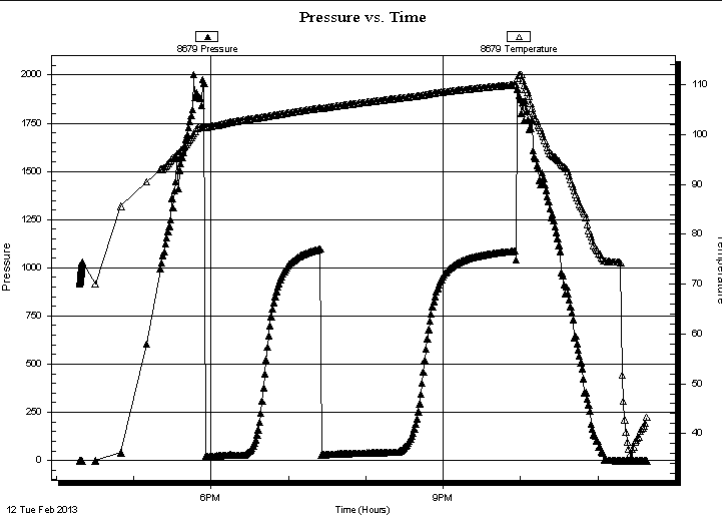
GENERAL INFORMATION:

Formation: **Conglomerate**
 Deviated: No Whipstock: ft (KB)
 Time Tool Opened: 17:55:11
 Time Test Ended: 23:45:11
Interval: 3827.00 ft (KB) To 3870.00 ft (KB) (TVD)
 Total Depth: 3870.00 ft (KB) (TVD)
 Hole Diameter: 7.88 inches Hole Condition: Good

Test Type: Conventional Bottom Hole (Reset)
 Tester: Jeff Brown
 Unit No: 44
 Reference Elevations: 2235.00 ft (KB)
 2222.00 ft (CF)
 KB to GR/CF: 13.00 ft

Serial #: 8679 Inside
 Press @ RunDepth: psig @ 3863.00 ft (KB)
 Start Date: 2013.02.12 End Date: 2013.02.12 Capacity: 8000.00 psig
 Start Time: 16:18:11 End Time: 23:37:40 Last Calib.: 2013.02.12
 Time On Btm:
 Time Off Btm:

TEST COMMENT: IFP=Weak blow built to 1 1/8"
 ISI=Dead no blow back
 FFP=Weak blow built to 2"
 FSI=Dead no blow back



PRESSURE SUMMARY			
Time (Min.)	Pressure (psig)	Temp (deg F)	Annotation

Recovery		
Length (ft)	Description	Volume (bbl)
57.00	HOCM 30%O 70%M	0.28
12.00	Free Oil	0.06

* Recovery from multiple tests

Gas Rates			
	Choke (inches)	Pressure (psig)	Gas Rate (Mcf/d)



**TRILOBITE
TESTING, INC.**

DRILL STEM TEST REPORT

TOOL DIAGRAM

Murfin Drilling Co

1-14s-20w Ellis, KS

250 N Water Ste 300
Wichita KS 67202 + 1216

Honas Farms #1-1

Job Ticket: 50386

DST#: 3

ATTN: Shauna Gunzelman

Test Start: 2013.02.12 @ 16:17:41

Tool Information

Drill Pipe:	Length: 3572.00 ft	Diameter: 3.80 inches	Volume: 50.11 bbl	Tool Weight: 2200.00 lb
Heavy Wt. Pipe:	Length: 0.00 ft	Diameter: 2.70 inches	Volume: 0.00 bbl	Weight set on Packer: 22000.00 lb
Drill Collar:	Length: 231.00 ft	Diameter: 2.25 inches	Volume: 1.14 bbl	Weight to Pull Loose: 84000.00 lb
			<u>Total Volume: 51.25 bbl</u>	Tool Chased 0.00 ft
Drill Pipe Above KB:	4.00 ft			String Weight: Initial 70000.00 lb
Depth to Top Packer:	3827.00 ft			Final 71000.00 lb
Depth to Bottom Packer:	ft			
Interval between Packers:	43.00 ft			
Tool Length:	71.00 ft			
Number of Packers:	2	Diameter: 6.75 inches		

Tool Comments:

Tool Description

Length (ft) Serial No. Position Depth (ft) Accum. Lengths

Change Over Sub	1.00			3800.00	
Shut In Tool	5.00			3805.00	
Hydraulic tool	5.00			3810.00	
Jars	5.00			3815.00	
Safety Joint	3.00			3818.00	
Packer	4.00			3822.00	28.00 Bottom Of Top Packer
Packer	5.00			3827.00	
Stubb	1.00			3828.00	
Perforations	2.00			3830.00	
Change Over Sub	1.00			3831.00	
Drill Pipe	31.00			3862.00	
Change Over Sub	1.00			3863.00	
Recorder	0.00	8679	Inside	3863.00	
Recorder	0.00	8321	Outside	3863.00	
Perforations	4.00			3867.00	
Bullnose	3.00			3870.00	43.00 Bottom Packers & Anchor
Total Tool Length:	71.00				



**TRILOBITE
TESTING, INC.**

DRILL STEM TEST REPORT

FLUID SUMMARY

Murfin Drilling Co

1-14s-20w Ellis,KS

250 N Water Ste 300
Wichita KS 67202 + 1216

Honas Farms #1-1

Job Ticket: 50386

DST#: 3

ATTN: Shauna Gunzelman

Test Start: 2013.02.12 @ 16:17:41

Mud and Cushion Information

Mud Type: Gel Chem

Cushion Type:

Oil API:

38 deg API

Mud Weight: 9.00 lb/gal

Cushion Length:

ft

Water Salinity:

ppm

Viscosity: 65.00 sec/qt

Cushion Volume:

bbbl

Water Loss: 6.78 in³

Gas Cushion Type:

Resistivity: ohm.m

Gas Cushion Pressure:

psig

Salinity: 6000.00 ppm

Filter Cake: inches

Recovery Information

Recovery Table

Length ft	Description	Volume bbbl
57.00	HOCM 30%O 70%M	0.280
12.00	Free Oil	0.059

Total Length: 69.00 ft

Total Volume: 0.339 bbl

Num Fluid Samples: 0

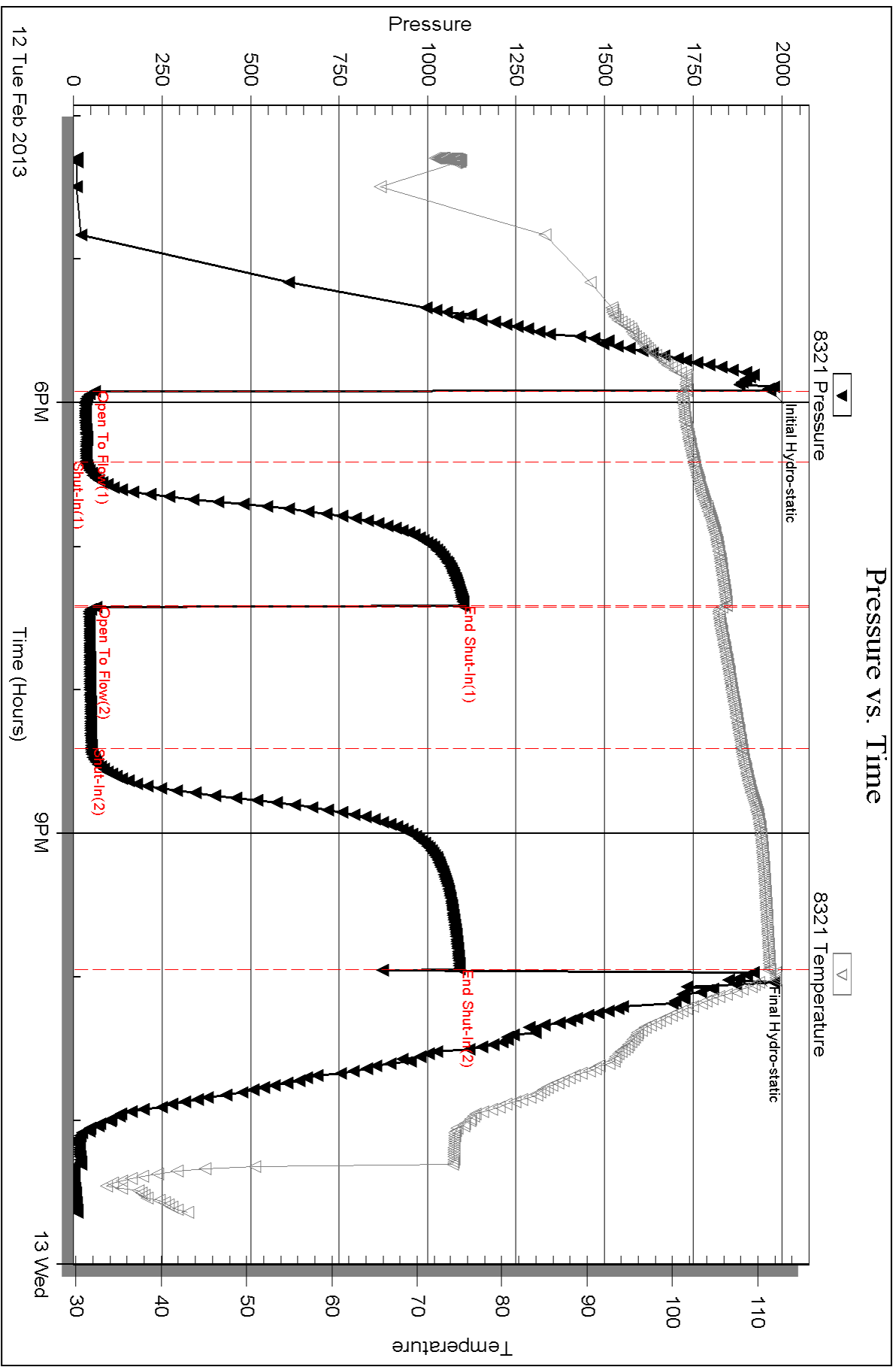
Num Gas Bombs: 0

Serial #:

Laboratory Name:

Laboratory Location:

Recovery Comments:



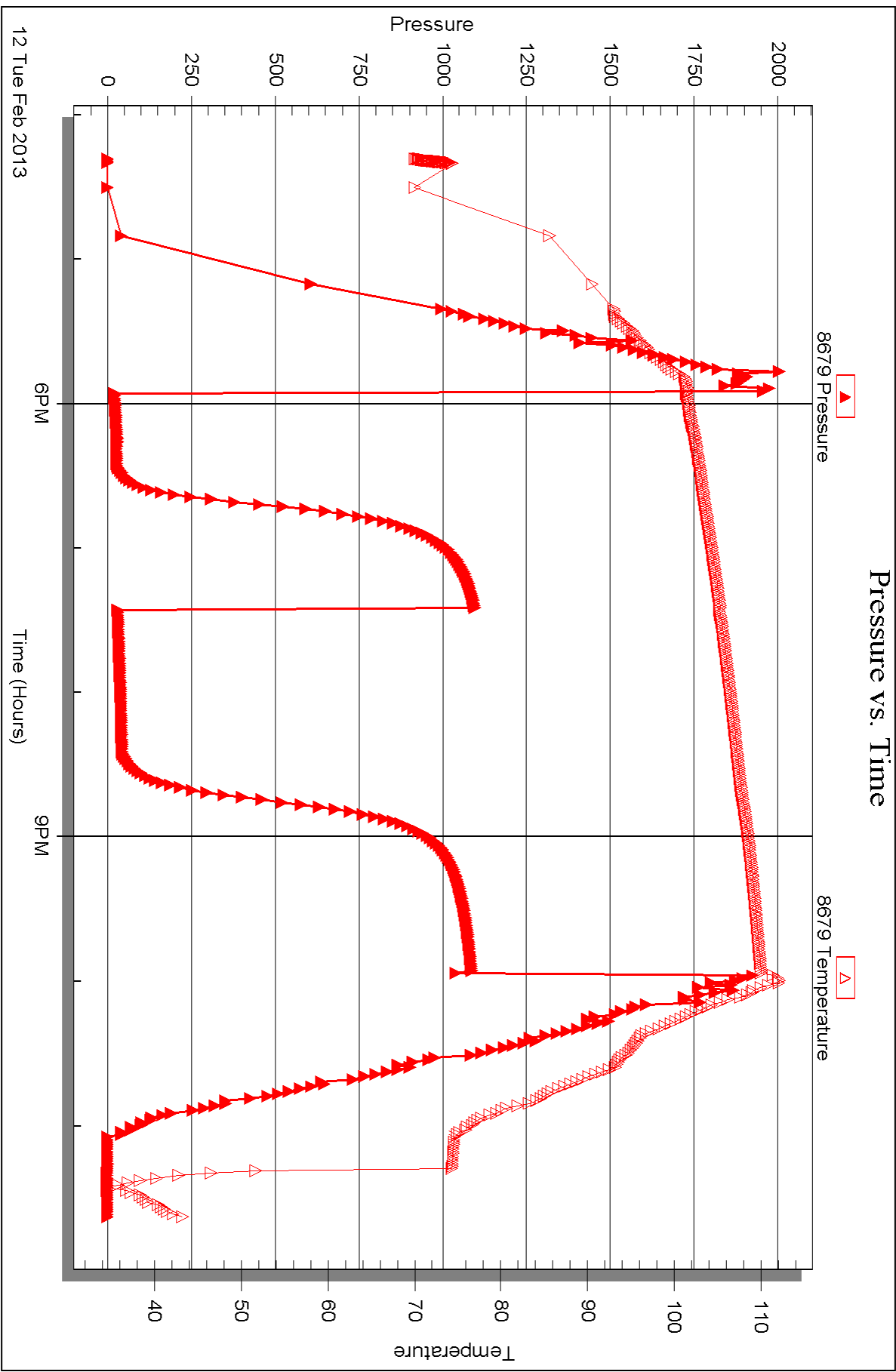
Serial #: 8679

Inside

Murfin Drilling Co

Honas Farms #1-1

DST Test Number: 3





DRILL STEM TEST REPORT

Prepared For: **Murfin Drilling Co**

250 N Water Ste 300
Wichita KS 67202 + 1216

ATTN: Shauna Gunzelman

Honas Farms #1-1

1-14s-20w Ellis,KS

Start Date: 2013.02.13 @ 06:36:53

End Date: 2013.02.13 @ 14:10:23

Job Ticket #: 50387 DST #: 4

Trilobite Testing, Inc
PO Box 362 Hays, KS 67601
ph: 785-625-4778 fax: 785-625-5620

Printed: 2013.02.26 @ 10:02:09

Murfin Drilling Co
1-14s-20w Ellis,KS
Honas Farms #1-1
DST # 4
Arbuckle
2013.02.13



TRILOBITE TESTING, INC.

DRILL STEM TEST REPORT

Murfin Drilling Co
 250 N Water Ste 300
 Wichita KS 67202 + 1216
 ATTN: Shauna Gunzelman

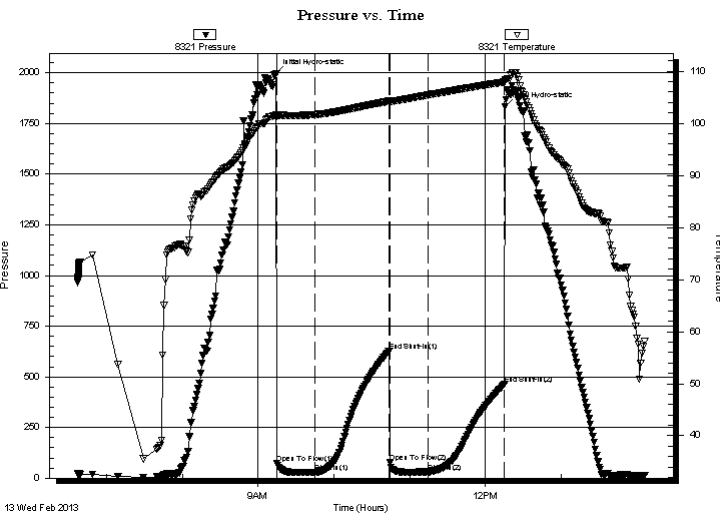
1-14s-20w Ellis, KS
Honas Farms #1-1
 Job Ticket: 50387 **DST#: 4**
 Test Start: 2013.02.13 @ 06:36:53

GENERAL INFORMATION:

Formation: **Arbuckle**
 Deviated: No Whipstock: ft (KB)
 Time Tool Opened: 09:14:53
 Time Test Ended: 14:10:23
 Interval: **3871.00 ft (KB) To 3882.00 ft (KB) (TVD)**
 Total Depth: 3882.00 ft (KB) (TVD)
 Hole Diameter: 7.88 inches Hole Condition: Good
 Test Type: Conventional Bottom Hole (Reset)
 Tester: Jeff Brown
 Unit No: 44
 Reference Elevations: 2235.00 ft (KB)
 2222.00 ft (CF)
 KB to GR/CF: 13.00 ft

Serial #: 8321 Outside
 Press @ RunDepth: 30.33 psig @ 3874.00 ft (KB) Capacity: 8000.00 psig
 Start Date: 2013.02.13 End Date: 2013.02.13 Last Calib.: 2013.02.13
 Start Time: 06:36:54 End Time: 14:06:23 Time On Btm: 2013.02.13 @ 09:14:23
 Time Off Btm: 2013.02.13 @ 12:15:53

TEST COMMENT: IFP=Weak blow built to 1/2"
 ISI=Dead no blow back
 FFP=Weak surface blow
 FSI=Dead no blow back



PRESSURE SUMMARY

Time (Min.)	Pressure (psig)	Temp (deg F)	Annotation
0	1997.90	101.53	Initial Hydro-static
1	71.85	101.35	Open To Flow (1)
31	27.21	101.65	Shut-In(1)
90	628.24	104.26	End Shut-In(1)
90	75.68	104.01	Open To Flow (2)
121	30.33	105.43	Shut-In(2)
181	465.36	107.92	End Shut-In(2)
182	1832.30	108.35	Final Hydro-static

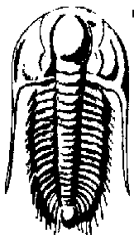
Recovery

Length (ft)	Description	Volume (bbl)
5.00	Mud w ith a scum of oil	0.02

Gas Rates

Choke (inches)	Pressure (psig)	Gas Rate (Mcf/d)

* Recovery from multiple tests



TRILOBITE TESTING, INC.

DRILL STEM TEST REPORT

Murfin Drilling Co
250 N Water Ste 300
Wichita KS 67202 + 1216
ATTN: Shauna Gunzelman

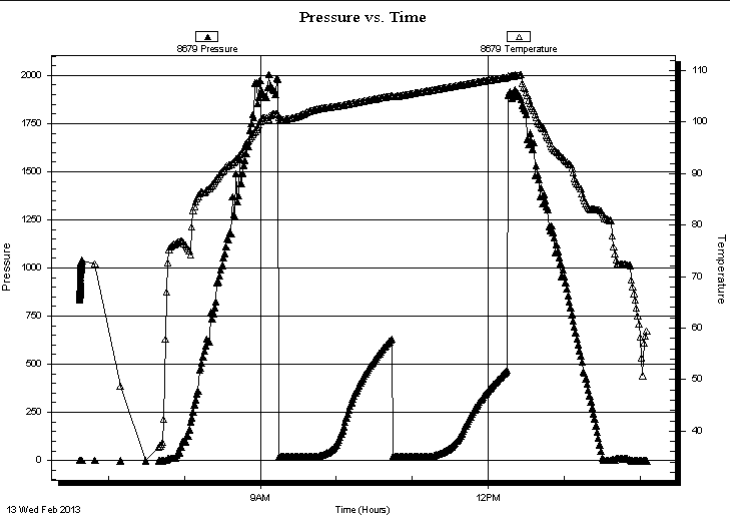
1-14s-20w Ellis, KS
Honas Farms #1-1
Job Ticket: 50387 **DST#: 4**
Test Start: 2013.02.13 @ 06:36:53

GENERAL INFORMATION:

Formation: Arbuckle	Deviated: No Whipstock: ft (KB)	Test Type: Conventional Bottom Hole (Reset)
Time Tool Opened: 09:14:53	Time Test Ended: 14:10:23	Tester: Jeff Brown
Interval: 3871.00 ft (KB) To 3882.00 ft (KB) (TVD)	Total Depth: 3882.00 ft (KB) (TVD)	Unit No: 44
Hole Diameter: 7.88 inches	Hole Condition: Good	Reference Elevations: 2235.00 ft (KB) 2222.00 ft (CF)
		KB to GR/CF: 13.00 ft

Serial #: 8679	Inside				
Press @ Run Depth:	psig @ 3874.00 ft (KB)	Capacity:	8000.00 psig		
Start Date:	2013.02.13	End Date:	2013.02.13	Last Calib.:	2013.02.13
Start Time:	06:37:24	End Time:	14:05:23	Time On Btm:	
				Time Off Btm:	

TEST COMMENT: IFP=Weak blow built to 1/2"
 ISI=Dead no blow back
 FFP=Weak surface blow
 FSI=Dead no blow back



PRESSURE SUMMARY

Time (Min.)	Pressure (psig)	Temp (deg F)	Annotation

Recovery

Length (ft)	Description	Volume (bbl)
5.00	Mud w ith a scum of oil	0.02

* Recovery from multiple tests

Gas Rates

Choke (inches)	Pressure (psig)	Gas Rate (Mcf/d)



**TRILOBITE
TESTING, INC.**

DRILL STEM TEST REPORT

TOOL DIAGRAM

Murfin Drilling Co

1-14s-20w Ellis, KS

250 N Water Ste 300
Wichita KS 67202 + 1216

Honas Farms #1-1

Job Ticket: 50387

DST#: 4

ATTN: Shauna Gunzelman

Test Start: 2013.02.13 @ 06:36:53

Tool Information

Drill Pipe:	Length: 3635.00 ft	Diameter: 3.80 inches	Volume: 50.99 bbl	Tool Weight: 2000.00 lb
Heavy Wt. Pipe:	Length: 0.00 ft	Diameter: 2.70 inches	Volume: 0.00 bbl	Weight set on Packer: 20000.00 lb
Drill Collar:	Length: 231.00 ft	Diameter: 2.25 inches	Volume: 1.14 bbl	Weight to Pull Loose: 85000.00 lb
			<u>Total Volume: 52.13 bbl</u>	Tool Chased 0.00 ft
Drill Pipe Above KB:	18.00 ft			String Weight: Initial 70000.00 lb
Depth to Top Packer:	3871.00 ft			Final 70000.00 lb
Depth to Bottom Packer:	ft			
Interval between Packers:	11.00 ft			
Tool Length:	34.00 ft			
Number of Packers:	2	Diameter: 6.75 inches		

Tool Comments:

Tool Description	Length (ft)	Serial No.	Position	Depth (ft)	Accum. Lengths
------------------	-------------	------------	----------	------------	----------------

Change Over Sub	1.00			3849.00	
Shut In Tool	5.00			3854.00	
Hydraulic tool	5.00			3859.00	
Safety Joint	3.00			3862.00	
Packer	4.00			3866.00	23.00 Bottom Of Top Packer
Packer	5.00			3871.00	
Stubb	1.00			3872.00	
Perforations	2.00			3874.00	
Recorder	0.00	8679	Inside	3874.00	
Recorder	0.00	8321	Outside	3874.00	
Perforations	5.00			3879.00	
Bullnose	3.00			3882.00	11.00 Bottom Packers & Anchor

Total Tool Length: 34.00



**TRILOBITE
TESTING, INC.**

DRILL STEM TEST REPORT

FLUID SUMMARY

Murfin Drilling Co

1-14s-20w Ellis,KS

250 N Water Ste 300
Wichita KS 67202 + 1216

Honas Farms #1-1

Job Ticket: 50387

DST#: 4

ATTN: Shauna Gunzelman

Test Start: 2013.02.13 @ 06:36:53

Mud and Cushion Information

Mud Type: Gel Chem

Cushion Type:

Oil API:

deg API

Mud Weight: 9.00 lb/gal

Cushion Length:

ft

Water Salinity:

ppm

Viscosity: 65.00 sec/qt

Cushion Volume:

bbbl

Water Loss: 6.78 in³

Gas Cushion Type:

Resistivity: ohm.m

Gas Cushion Pressure:

psig

Salinity: 6000.00 ppm

Filter Cake: inches

Recovery Information

Recovery Table

Length ft	Description	Volume bbl
5.00	Mud with a scum of oil	0.025

Total Length: 5.00 ft Total Volume: 0.025 bbl

Num Fluid Samples: 0

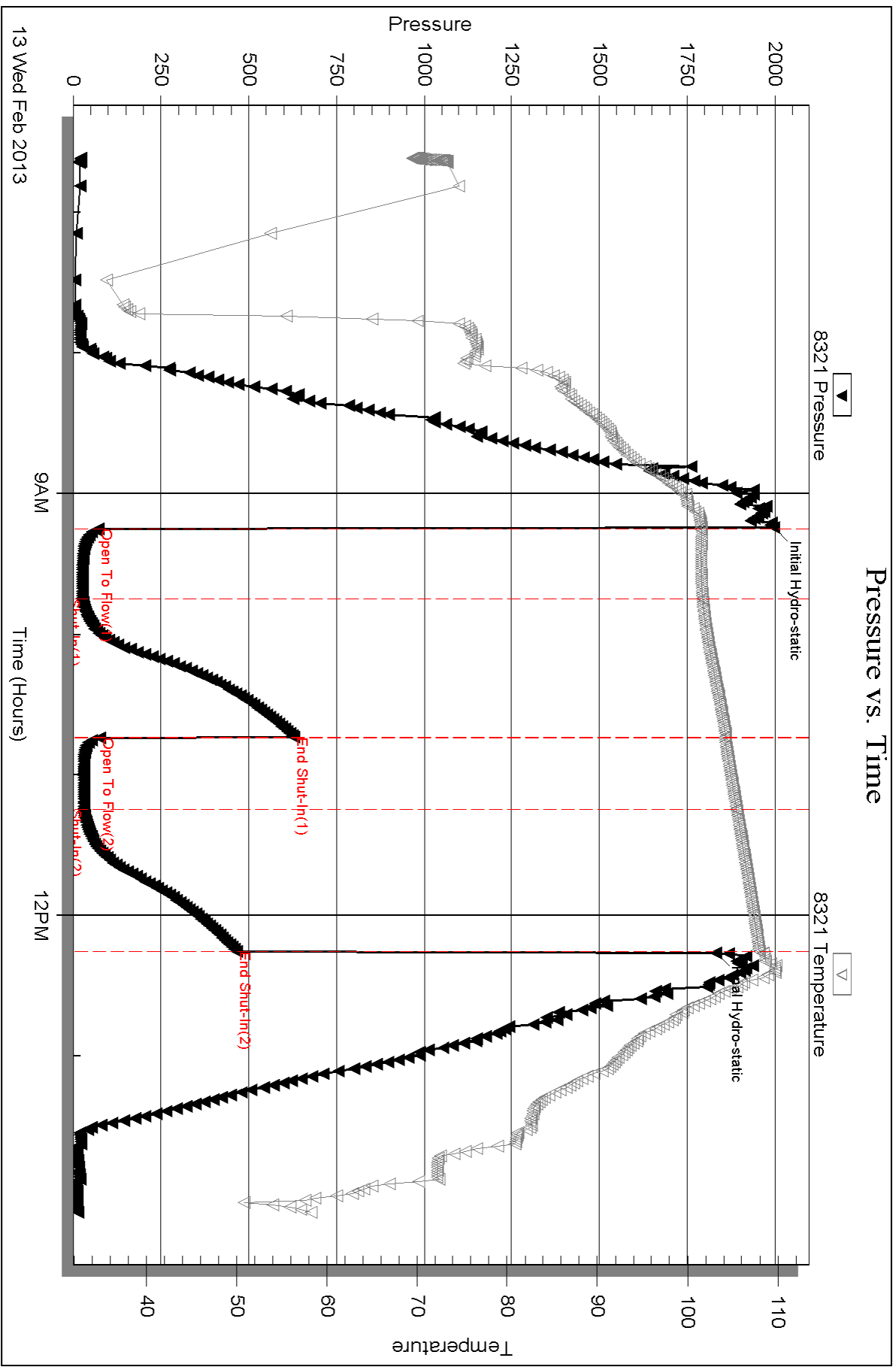
Num Gas Bombs: 0

Serial #:

Laboratory Name:

Laboratory Location:

Recovery Comments:



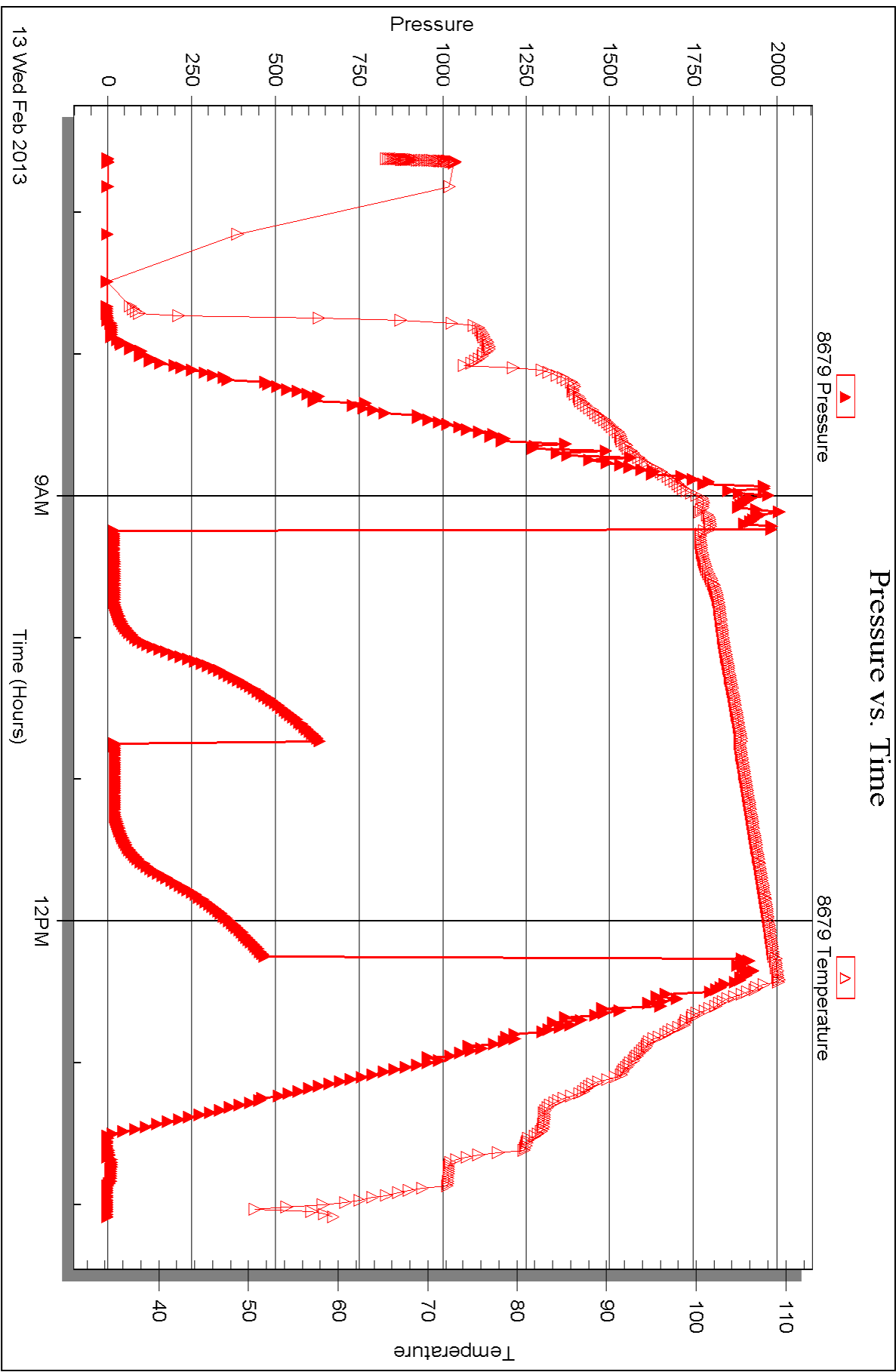
Serial #: 8679

Inside

Murfin Drilling Co

Honas Farms #1-1

DST Test Number: 4



Triobite Testing, Inc

Ref. No: 50387

Printed: 2013.02.26 @ 10:02:12



DRILL STEM TEST REPORT

Prepared For: **Murfin Drilling Co**

250 N Water Ste 300
Wichita KS 67202 + 1216

ATTN: Shauna Gunzelman

Honas Farms #1-1

1-14s-20w Ellis,KS

Start Date: 2013.02.13 @ 20:02:29

End Date: 2013.02.14 @ 03:40:59

Job Ticket #: 50388 DST #: 5

Trilobite Testing, Inc

PO Box 362 Hays, KS 67601

ph: 785-625-4778 fax: 785-625-5620

Printed: 2013.02.26 @ 10:01:27



**TRILOBITE
TESTING, INC.**

DRILL STEM TEST REPORT

Murfin Drilling Co
250 N Water Ste 300
Wichita KS 67202 + 1216
ATTN: Shauna Gunzelman

1-14s-20w Ellis, KS
Honas Farms #1-1
Job Ticket: 50388 **DST#: 5**
Test Start: 2013.02.13 @ 20:02:29

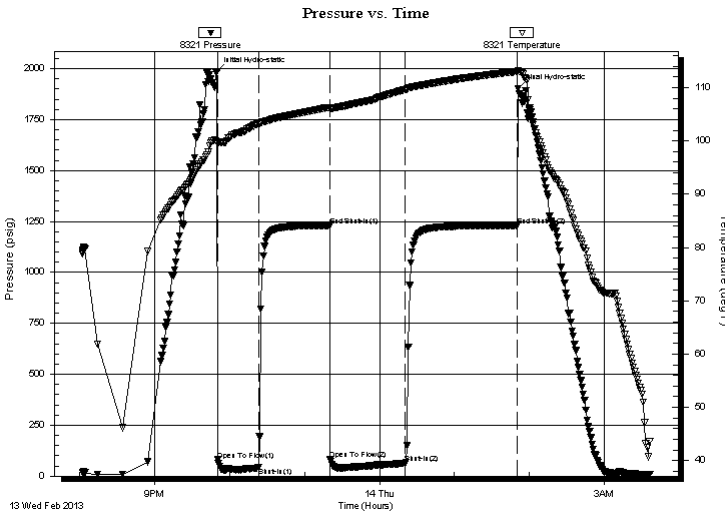
GENERAL INFORMATION:

Formation: **Arbuckle**
Deviated: No Whipstock: ft (KB)
Time Tool Opened: 21:50:29
Time Test Ended: 03:40:59
Interval: **3882.00 ft (KB) To 3892.00 ft (KB) (TVD)**
Total Depth: 3892.00 ft (KB) (TVD)
Hole Diameter: 7.88 inches Hole Condition: Good
Test Type: Conventional Bottom Hole (Reset)
Tester: Jeff Brown
Unit No: 44
Reference Elevations: 2235.00 ft (KB)
2222.00 ft (CF)
KB to GR/CF: 13.00 ft

Serial #: 8321 Outside
Press @ Run Depth: 63.03 psig @ 3884.00 ft (KB) Capacity: 8000.00 psig
Start Date: 2013.02.13 End Date: 2013.02.14 Last Calib.: 2013.02.14
Start Time: 20:02:30 End Time: 03:35:59 Time On Btm: 2013.02.13 @ 21:49:59
Time Off Btm: 2013.02.14 @ 01:50:59

TEST COMMENT: IFP=Weak blow built to 2"
ISI=Dead no blow back
FFP=Weak surface blow built to 1 1/4"
FSI=Dead no blow back

PRESSURE SUMMARY



Time (Min.)	Pressure (psig)	Temp (deg F)	Annotation
0	1985.64	99.85	Initial Hydro-static
1	79.60	99.40	Open To Flow (1)
33	42.56	103.16	Shut-In(1)
90	1230.93	106.30	End Shut-In(1)
91	83.63	106.05	Open To Flow (2)
151	63.03	109.62	Shut-In(2)
240	1230.56	113.01	End Shut-In(2)
241	1901.31	113.23	Final Hydro-static

Recovery

Length (ft)	Description	Volume (bbl)
20.00	WM 5%W 95%M	0.10
57.00	WM 40%W 60%M	0.28

* Recovery from multiple tests

Gas Rates

Choke (inches)	Pressure (psig)	Gas Rate (Mcf/d)



TRILOBITE TESTING, INC.

DRILL STEM TEST REPORT

Murfin Drilling Co
 250 N Water Ste 300
 Wichita KS 67202 + 1216
 ATTN: Shauna Gunzelman

1-14s-20w Ellis,KS
Honas Farms #1-1
 Job Ticket: 50388 **DST#: 5**
 Test Start: 2013.02.13 @ 20:02:29

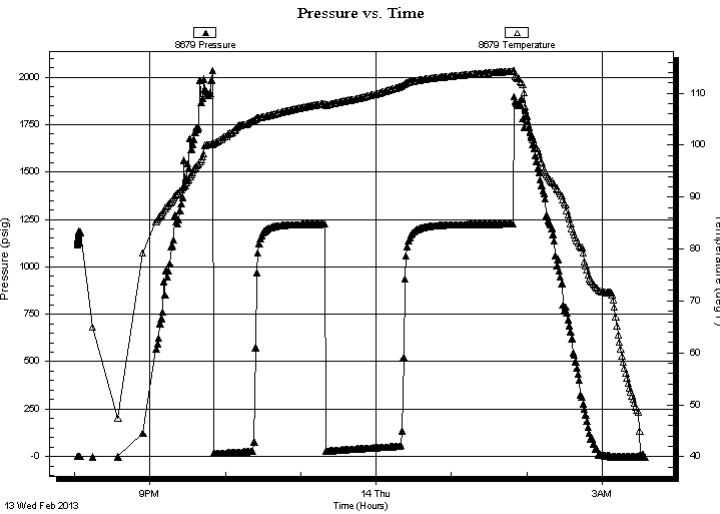
GENERAL INFORMATION:

Formation: **Arbuckle**
 Deviated: No Whipstock: ft (KB)
 Time Tool Opened: 21:50:29
 Time Test Ended: 03:40:59
 Interval: **3882.00 ft (KB) To 3892.00 ft (KB) (TVD)**
 Total Depth: 3892.00 ft (KB) (TVD)
 Hole Diameter: 7.88 inches Hole Condition: Good
 Test Type: Conventional Bottom Hole (Reset)
 Tester: Jeff Brown
 Unit No: 44
 Reference Elevations: 2235.00 ft (KB)
 2222.00 ft (CF)
 KB to GR/CF: 13.00 ft

Serial #: 8679 Inside

Press @RunDepth: psig @ 3884.00 ft (KB) Capacity: 8000.00 psig
 Start Date: 2013.02.13 End Date: 2013.02.14 Last Calib.: 2013.02.14
 Start Time: 20:02:17 End Time: 03:34:16 Time On Btm:
 Time Off Btm:

TEST COMMENT: IFP=Weak blow built to 2"
 ISI=Dead no blow back
 FFP=Weak surface blow built to 1 1/4"
 FSI=Dead no blow back



PRESSURE SUMMARY

Time (Min.)	Pressure (psig)	Temp (deg F)	Annotation

Recovery

Length (ft)	Description	Volume (bbl)
20.00	WM 5%W 95%M	0.10
57.00	WM 40%W 60%M	0.28

* Recovery from multiple tests

Gas Rates

	Choke (inches)	Pressure (psig)	Gas Rate (Mcf/d)



**TRILOBITE
TESTING, INC.**

DRILL STEM TEST REPORT

TOOL DIAGRAM

Murfin Drilling Co

1-14s-20w Ellis, KS

250 N Water Ste 300
Wichita KS 67202 + 1216

Honas Farms #1-1

Job Ticket: 50388

DST#: 5

ATTN: Shauna Gunzelman

Test Start: 2013.02.13 @ 20:02:29

Tool Information

Drill Pipe:	Length: 3635.00 ft	Diameter: 3.80 inches	Volume: 50.99 bbl	Tool Weight: 2000.00 lb
Heavy Wt. Pipe:	Length: 0.00 ft	Diameter: 2.70 inches	Volume: 0.00 bbl	Weight set on Packer: 20000.00 lb
Drill Collar:	Length: 231.00 ft	Diameter: 2.25 inches	Volume: 1.14 bbl	Weight to Pull Loose: 79000.00 lb
			<u>Total Volume: 52.13 bbl</u>	Tool Chased 0.00 ft
Drill Pipe Above KB:	7.00 ft			String Weight: Initial 72000.00 lb
Depth to Top Packer:	3882.00 ft			Final 73000.00 lb
Depth to Bottom Packer:	ft			
Interval between Packers:	10.00 ft			
Tool Length:	33.00 ft			
Number of Packers:	2	Diameter: 6.75 inches		

Tool Comments:

Tool Description	Length (ft)	Serial No.	Position	Depth (ft)	Accum. Lengths
------------------	-------------	------------	----------	------------	----------------

Change Over Sub	1.00			3860.00	
Shut In Tool	5.00			3865.00	
Hydraulic tool	5.00			3870.00	
Safety Joint	3.00			3873.00	
Packer	4.00			3877.00	23.00 Bottom Of Top Packer
Packer	5.00			3882.00	
Stubb	1.00			3883.00	
Perforations	1.00			3884.00	
Recorder	0.00	8679	Inside	3884.00	
Recorder	0.00	8321	Outside	3884.00	
Perforations	5.00			3889.00	
Bullnose	3.00			3892.00	10.00 Bottom Packers & Anchor

Total Tool Length: 33.00



**TRILOBITE
TESTING, INC.**

DRILL STEM TEST REPORT

FLUID SUMMARY

Murfin Drilling Co

1-14s-20w Ellis,KS

250 N Water Ste 300
Wichita KS 67202 + 1216

Honas Farms #1-1

Job Ticket: 50388

DST#: 5

ATTN: Shauna Gunzelman

Test Start: 2013.02.13 @ 20:02:29

Mud and Cushion Information

Mud Type: Gel Chem

Cushion Type:

Oil API:

deg API

Mud Weight: 9.00 lb/gal

Cushion Length:

ft

Water Salinity:

ppm

Viscosity: 7.20 sec/qt

Cushion Volume:

bbf

Water Loss: 6.79 in³

Gas Cushion Type:

Resistivity: ohm.m

Gas Cushion Pressure:

psig

Salinity: 6000.00 ppm

Filter Cake: inches

Recovery Information

Recovery Table

Length ft	Description	Volume bbf
20.00	WM 5%W 95%M	0.098
57.00	WM 40%W 60%M	0.280

Total Length: 77.00 ft Total Volume: 0.378 bbf

Num Fluid Samples: 0

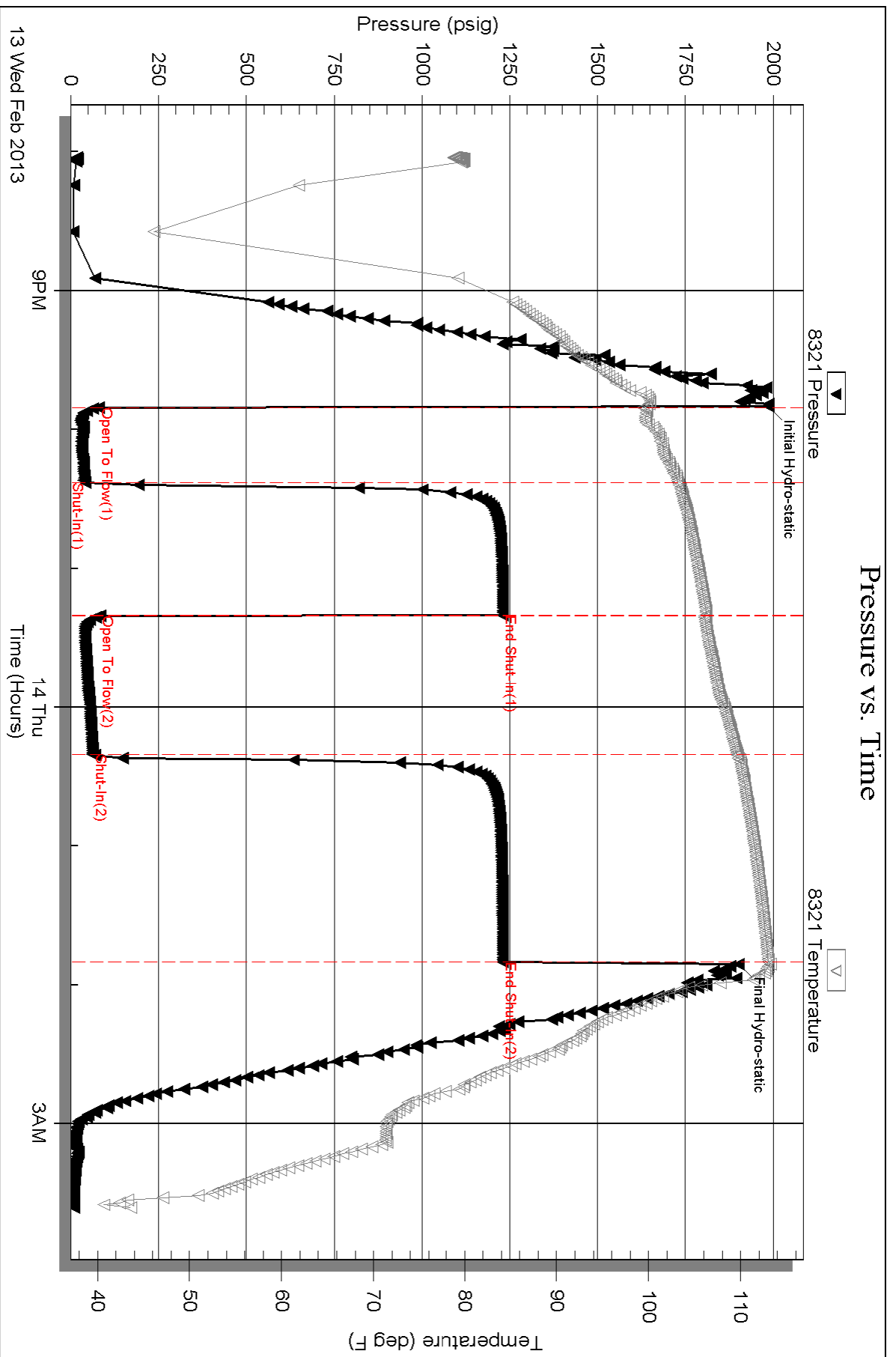
Num Gas Bombs: 0

Serial #:

Laboratory Name:

Laboratory Location:

Recovery Comments:



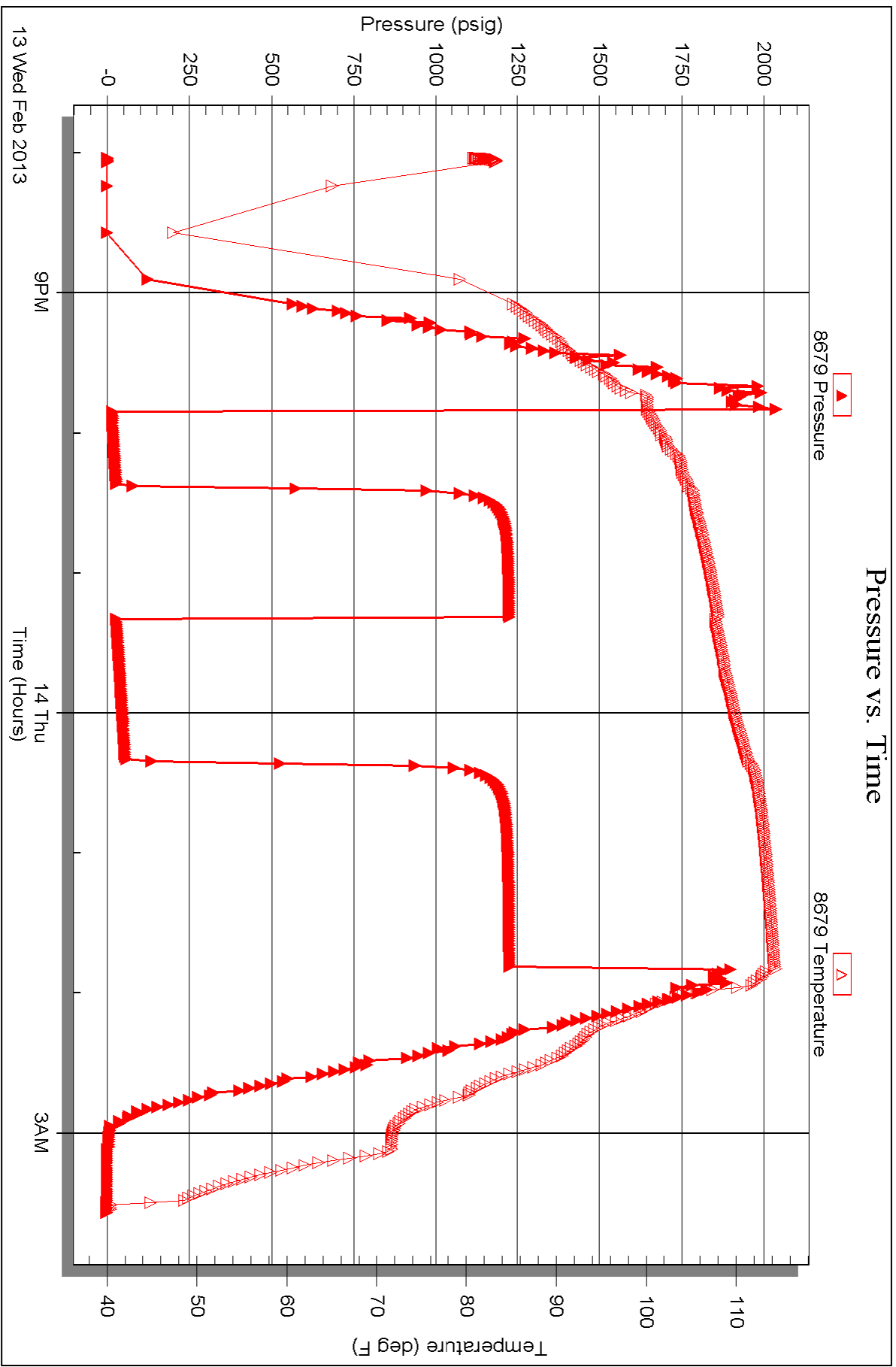
Serial #: 8679

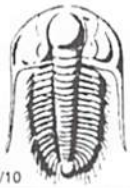
Inside

Murfin Drilling Co

Honas Farms #1-1

DST Test Number: 5





TRILOBITE TESTING INC.

1515 Commerce Parkway • Hays, Kansas 67601

Test Ticket

NO. 50384

Well Name & No. Hongas Farms #1-1 Test No. 1 Date 2-10-13
 Company Murfin Drilling Co Elevation 2235 KB 2222 GL
 Address 250 N Water Ste 300 Wichita KS 67202 + 1216
 Co. Rep / Geo. Robert Hendrix Rig Murfin #2
 Location: Sec. 1 Twp. 14 S Rge. 20 W Co. ELLIS State KS

Interval Tested 3586-3635 Zone Tested Lansing - D-F
 Anchor Length 49 Drill Pipe Run 3352 Mud Wt. 9.0
 Top Packer Depth 3581 Drill Collars Run 231 Vis 65
 Bottom Packer Depth 3586 Wt. Pipe Run 0 WL 6.8
 Total Depth 3635 Chlorides 5400 ppm System LCM 2

Blow Description FP. Weak Blow Built To 2 1/2 IN
IS. Dead No Blow Back
FP. Dead No Blow
IS. Dead No Blow Back

Rec	Feet of	%gas	%oil	%water	%mud
<u>70</u>	<u>MUD</u>			<u>100</u>	
<u>45</u>	<u>MU with oil spots</u>			<u>70</u>	<u>30</u>

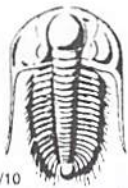
Rec Total 115 BHT 104 Gravity _____ API RW 1172 @ 55.7 °F Chlorides 55,000 ppm

(A) Initial Hydrostatic 1826 Test 1150 T-On Location 15:53
 (B) First Initial Flow 666 Jars _____ T-Started 17:11
 (C) First Final Flow 75 Safety Joint 75 T-Open 19:06
 (D) Initial Shut-In 829 Circ Sub _____ T-Pulled 22:06
 (E) Second Initial Flow 94 Hourly Standby _____ T-Out 09:00
 (F) Second Final Flow 97 Mileage 27rt 41.85 Comments _____
 (G) Final Shut-In 822 Sampler _____
 (H) Final Hydrostatic 1786 Straddle _____ Ruined Shale Packer _____
 Shale Packer _____ Ruined Packer _____

Initial Open 30 Extra Packer _____ Extra Copies _____
 Initial Shut-In 60 Extra Recorder _____ Sub Total 0
 Final Flow 30 Day Standby _____ Total 1266.85
 Final Shut-In 60 Accessibility _____ MP/DST Disc't _____
 Sub Total 1266.85

Approved By _____ Our Representative Jeff Brown

Trilobite Testing Inc. shall not be liable for damaged of any kind of the property or personnel of the one for whom a test is made, or for any loss suffered or sustained, directly or indirectly, through the use of its equipment, or its statements or opinion concerning the results of any test, tools lost or damaged in the hole shall be paid for at cost by the party for whom the test is made.



TRILOBITE TESTING INC.

1515 Commerce Parkway • Hays, Kansas 67601

Test Ticket

NO. 50385

Well Name & No. Honas Farms #1-1 Test No. 2 Date 2-11-13
 Company Murfin Drilling Co Elevation 2235 KB 2222 GL
 Address 250 N Water Ste 300 Wichita KS 67202 + 1216
 Co. Rep / Geo. Robert Hendrix Rig Murfin #2
 Location: Sec. 1 Twp. 14S Rge. 20W Co. Ellis State KS

Interval Tested 3690-3745 Zone Tested Lansing-I-K
 Anchor Length 75 Drill Pipe Run 3446 Mud Wt. 9.0
 Top Packer Depth 3685 Drill Collars Run 231 Vis 64
 Bottom Packer Depth 3690 Wt. Pipe Run 0 WL 6.8
 Total Depth 3745 Chlorides 6000 ppm System LCM 2

Blow Description IP-Weak Blow Built To 3/4 IN
1st-Dead No Blow Back
FF-Dead No Blow
1st-Dead No Blow Back

Rec	Feet of	%gas	%oil	%water	%mud
<u>10</u>	<u>USOCM</u>		<u>3</u>		<u>97</u>
Rec	Feet of	%gas	%oil	%water	%mud
Rec	Feet of	%gas	%oil	%water	%mud
Rec	Feet of	%gas	%oil	%water	%mud
Rec	Feet of	%gas	%oil	%water	%mud

Rec Total 10 BHT 104 Gravity _____ API RW _____ @ _____ °F Chlorides _____ ppm

(A) Initial Hydrostatic 1859 Test 1150 T-On Location 16:27
 (B) First Initial Flow 52 ~~Jars~~ No Jars T-Started 16:43
 (C) First Final Flow 31 Safety Joint 75 T-Open 18:29
 (D) Initial Shut-In 85 Circ Sub T-Pulled 21:29
 (E) Second Initial Flow 48 Hourly Standby T-Out 23:07
 (F) Second Final Flow 34 Mileage 41.85 Comments _____
 (G) Final Shut-In 48 Sampler _____
 (H) Final Hydrostatic 1750 Straddle _____ Ruined Shale Packer _____
 Shale Packer _____ Ruined Packer _____
 Extra Packer _____ Extra Copies _____
 Extra Recorder _____ Sub Total 0
 Day Standby _____ Total 1266.85
 Accessibility _____ MP/DST Disc't _____

Initial Open 30
 Initial Shut-In 60
 Final Flow 30
 Final Shut-In 60
 Sub Total 1266.85

Approved By _____ Our Representative Jeff Brown

Trilobite Testing Inc. shall not be liable for damaged of any kind of the property or personnel of the one for whom a test is made, or for any loss suffered or sustained, directly or indirectly, through the use of its equipment, or its statements or opinion concerning the results of any test, tools lost or damaged in the hole shall be paid for at cost by the party for whom the test is made.



TRILOBITE TESTING INC.

1515 Commerce Parkway • Hays, Kansas 67601

Test Ticket

NO. 50386

4/10

Well Name & No. Hongas Farms #1-1 Test No. 3 Date 2-12-13
 Company Murfin Drilling Co Elevation 2235 KB 2222 GL
 Address 250 N Water Ste 300 Wichita KS 67202+1216
 Co. Rep / Geo. Robert Hendrix Rig Murfin #2
 Location: Sec. 1 Twp. 14s Rge. 20w Co. ELLIS State KS

Interval Tested 3827-3870 Zone Tested Conglomerate
 Anchor Length 43 Drill Pipe Run 3572 Mud Wt. 9.2
 Top Packer Depth 3822 Drill Collars Run 231 Vis 65
 Bottom Packer Depth 3827 Wt. Pipe Run 0 WL 6.8
 Total Depth 3870 Chlorides 6000 ppm System LCM 2

Blow Description IP-Weak Blow Built To 1 1/8 IN
ISP-Dead No Blow Back
FP-Weak Blow Built To 2 IN
FST-Dead No Blow Back

Rec	Feet of	%gas	%oil	%water	%mud
<u>57</u>	<u>Holm</u>		<u>30</u>		<u>70</u>
<u>12</u>	<u>Free oil</u>		<u>100</u>		

Rec Total 69 BHT 111 Gravity 38 API RW @ _____ °F Chlorides _____ ppm

(A) Initial Hydrostatic <u>1966</u>	<input checked="" type="checkbox"/> Test <u>1150</u>	T-On Location <u>15:53</u>
(B) First Initial Flow <u>61</u>	<input checked="" type="checkbox"/> Jars <u>250</u>	T-Started <u>16:17</u>
(C) First Final Flow <u>37</u>	<input checked="" type="checkbox"/> Safety Joint <u>75</u>	T-Open <u>17:55</u>
(D) Initial Shut-In <u>1098</u>	<input type="checkbox"/> Circ Sub _____	T-Pulled <u>21:55</u>
(E) Second Initial Flow <u>65</u>	<input type="checkbox"/> Hourly Standby _____	T-Out <u>23:45</u>
(F) Second Final Flow <u>51</u>	<input checked="" type="checkbox"/> Mileage <u>41.85</u>	Comments _____
(G) Final Shut-In <u>1091</u>	<input type="checkbox"/> Sampler _____	
(H) Final Hydrostatic <u>1919</u>	<input type="checkbox"/> Straddle _____	<input type="checkbox"/> Ruined Shale Packer _____

Initial Open 30
 Initial Shut-In 60
 Final Flow 60
 Final Shut-In 90

Shale Packer _____
 Extra Packer _____
 Extra Recorder _____
 Day Standby _____
 Accessibility _____

Sub Total 1516.85

Sub Total 1516.85

Approved By _____ Our Representative Jeff Brown

Trilobite Testing Inc. shall not be liable for damaged of any kind of the property or personnel of the one for whom a test is made, or for any loss suffered or sustained, directly or indirectly, through the use of its equipment, or its statements or opinion concerning the results of any test, tools lost or damaged in the hole shall be paid for at cost by the party for whom the test is made.



TRILOBITE TESTING INC.

1515 Commerce Parkway • Hays, Kansas 67601

Test Ticket

NO. 50387

Well Name & No. Hongas Farms #1-1 Test No. 4 Date 2-13-13
 Company Murfin Drilling Co Elevation 2235 KB 2222 GL
 Address 250 N Water Ste 300 Wichita KS 67202 + 1216
 Co. Rep / Geo. Robert Hendrix Rig Murfin #2
 Location: Sec. 1 Twp. 14S Rge. 20W Co. ELLIS State KS

Interval Tested 3871-3882 Zone Tested Arbuckle
 Anchor Length 11 Drill Pipe Run 3635 Mud Wt. 9.2
 Top Packer Depth 3866 Drill Collars Run 231 Vis 65
 Bottom Packer Depth 3871 Wt. Pipe Run 0 WL 6.8
 Total Depth 3882 Chlorides 6000 ppm System LCM 2

Blow Description SP-Weak Blow Built To 1/2 IN
BT-Dead No Blow Back
SP-Weak Surface Blow
BT-Dead No Blow Back

Rec	Feet of	%gas	%oil	%water	%mud
<u>5</u>	<u>MUD WITH A SCUM OF OIL</u>				<u>100</u>
Rec	Feet of	%gas	%oil	%water	%mud
Rec	Feet of	%gas	%oil	%water	%mud
Rec	Feet of	%gas	%oil	%water	%mud
Rec	Feet of	%gas	%oil	%water	%mud

Rec Total 5 BHT 108 Gravity _____ API RW _____ @ _____ °F Chlorides _____ ppm

(A) Initial Hydrostatic 1998 Test 1150 T-On Location 6:23
 (B) First Initial Flow 72 Jars T-Started 6:36
 (C) First Final Flow 27 Safety Joint 75 T-Open 9:14
 (D) Initial Shut-In 628 Circ Sub T-Pulled 12:14
 (E) Second Initial Flow 76 Hourly Standby T-Out 14:10
 (F) Second Final Flow 30 Mileage 41.85 Comments _____
 (G) Final Shut-In 465 Sampler _____
 (H) Final Hydrostatic 1832 Straddle _____
 Shale Packer _____
 Extra Packer _____
 Extra Recorder _____
 Day Standby _____
 Accessibility _____

Initial Open 30
 Initial Shut-In 60
 Final Flow 30
 Final Shut-In 60
 Sub Total 0
 Total 1266.85
 Sub Total 1266.85

Approved By _____ Our Representative Jeff Brown

Trilobite Testing Inc. shall not be liable for damaged of any kind of the property or personnel of the one for whom a test is made, or for any loss suffered or sustained, directly or indirectly, through the use of its equipment, or its statements or opinion concerning the results of any test, tools lost or damaged in the hole shall be paid for at cost by the party for whom the test is made.



TRILOBITE TESTING INC.

1515 Commerce Parkway • Hays, Kansas 67601

Test Ticket

NO. 50388

Well Name & No. Hanas Farms #1-1 Test No. 5 Date 2-13-13
 Company Murfin Drilling Co Elevation 2233 KB 2222 GL
 Address 250 N Water Ste 300 Wichita KS 67202 + 1214
 Co. Rep / Geo. Robert Hendrix Rig Murfin #2
 Location: Sec. 1 Twp. 14S Rge. 20W Co. ELLIS State KS

Interval Tested 3882-3892 Zone Tested AR Buckle
 Anchor Length 10 Drill Pipe Run 3635 Mud Wt. 9.4
 Top Packer Depth 3877 Drill Collars Run 231 Vis 72
 Bottom Packer Depth 3882 Wt. Pipe Run 0 WL 7.2
 Total Depth 3892 Chlorides 40000 ppm System LCM 7

Blow Description IP-Weak Blow Built To 2 IN
ISI-Dead No Blow Back
FFP-Weak Blow Built To 1 1/4 IN
ISI-Dead No Blow Back

Rec	Feet of	%gas	%oil	%water	%mud
<u>20</u>	<u>WM</u>		<u>5</u>	<u>95</u>	
<u>57</u>	<u>WM</u>		<u>40</u>	<u>60</u>	

Rec Total 77 BHT 113 Gravity _____ API RW 422 @ 52.2 °F Chlorides 22,000 ppm

(A) Initial Hydrostatic 19 86 Test 1150 T-On Location 19:20
 (B) First Initial Flow 80 Jars T-Started 20:02
 (C) First Final Flow 43 Safety Joint 75 T-Open 21:51
 (D) Initial Shut-In 12 31 Circ Sub T-Pulled 1:51
 (E) Second Initial Flow 84 Hourly Standby T-Out 3:40
 (F) Second Final Flow 63 Mileage 83.70 Comments Loaded Tool's
 (G) Final Shut-In 12 31 Sampler @ 12:56 on 2-14-13
 (H) Final Hydrostatic 19 01 Straddle Ruined Shale Packer
 Shale Packer Ruined Packer 320
 Extra Packer Extra Copies
 Extra Recorder Sub Total 320
 Day Standby Total 1628.70
 Accessibility MP/DST Disc't

Initial Open 30
 Initial Shut-In 60
 Final Flow 60
 Final Shut-In 90
 Sub Total 1308.70

Approved By _____ Our Representative Jeff Brown

Trilobite Testing Inc. shall not be liable for damaged of any kind of the property or personnel of the one for whom a test is made, or for any loss suffered or sustained, directly or indirectly, through the use of its equipment, or its statements or opinion concerning the results of any test, tools lost or damaged in the hole shall be paid for at cost by the party for whom the test is made.