



**TRILOBITE  
TESTING, INC.**

# DRILL STEM TEST REPORT

Cholla Production LLC

**29-19s-33w Scott, Ks**

7851 S Elati Ste 201  
Littleton, CO 80120

**Bontreger RT #1-29**

ATTN: Bill Goff

Job Ticket: 49881

**DST#: 1**

Test Start: 2012.11.06 @ 09:05:56

## GENERAL INFORMATION:

Formation: **Pawnee**

Deviated: No Whipstock: ft (KB)

Time Tool Opened: 10:52:56

Time Test Ended: 15:35:26

Test Type: Conventional Bottom Hole (Initial)

Tester: Shane McBride

Unit No: 55

**Interval: 4437.00 ft (KB) To 4470.00 ft (KB) (TVD)**

Reference Elevations: 2990.00 ft (KB)

Total Depth: 4470.00 ft (KB) (TVD)

2985.00 ft (CF)

Hole Diameter: 7.88 inches Hole Condition: Fair

KB to GR/CF: 5.00 ft

**Serial #: 6667 Inside**

Press @ Run Depth: 39.13 psig @ 4438.00 ft (KB)

Capacity: 8000.00 psig

Start Date: 2012.11.06

End Date:

2012.11.06

Last Calib.:

2012.11.06

Start Time: 09:05:56

End Time:

15:12:26

Time On Btm:

2012.11.06 @ 10:52:41

Time Off Btm:

2012.11.06 @ 13:35:26

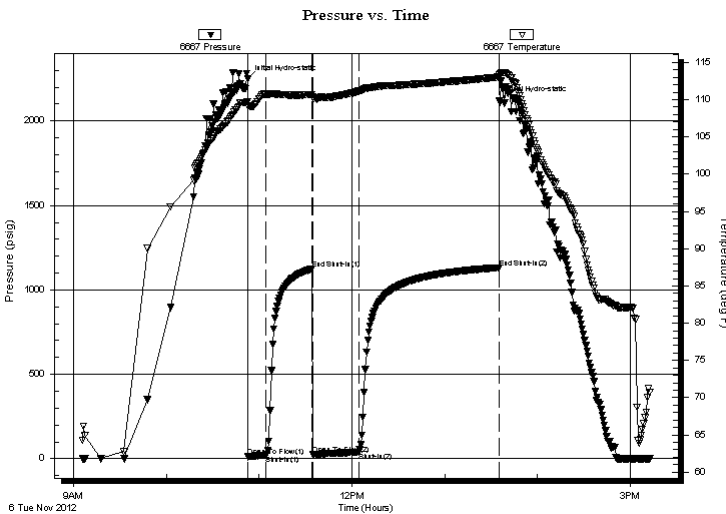
**TEST COMMENT:** Weak blow died in 8 min.

No return

No blow

No return

## PRESSURE SUMMARY



Time (Min.)	Pressure (psig)	Temp (deg F)	Annotation
0	2248.46	109.76	Initial Hydro-static
1	11.50	109.14	Open To Flow (1)
12	21.77	110.71	Shut-In(1)
42	1124.31	110.67	End Shut-In(1)
42	25.28	110.36	Open To Flow (2)
72	39.13	111.13	Shut-In(2)
163	1131.60	113.03	End Shut-In(2)
163	2119.58	113.36	Final Hydro-static

## Recovery

Length (ft)	Description	Volume (bbl)
5.00	mud 100% m	0.02

## Gas Rates

	Choke (inches)	Pressure (psig)	Gas Rate (Mcf/d)



**TRILOBITE  
TESTING, INC.**

# DRILL STEM TEST REPORT

**FLUID SUMMARY**

Cholla Production LLC

**29-19s-33w Scott, Ks**

7851 S Elati Ste 201  
Littleton, CO 80120

**Bontreger RT #1-29**

Job Ticket: 49881

**DST#: 1**

ATTN: Bill Goff

Test Start: 2012.11.06 @ 09:05:56

## Mud and Cushion Information

Mud Type: Gel Chem

Cushion Type:

Oil API:

0 deg API

Mud Weight: 9.00 lb/gal

Cushion Length:

ft

Water Salinity:

0 ppm

Viscosity: 52.00 sec/qt

Cushion Volume:

bbbl

Water Loss: 7.99 in<sup>3</sup>

Gas Cushion Type:

Resistivity: 0.00 ohm.m

Gas Cushion Pressure:

psig

Salinity: 6000.00 ppm

Filter Cake: 1.00 inches

## Recovery Information

Recovery Table

Length ft	Description	Volume bbbl
5.00	mud 100%m	0.025

Total Length: 5.00 ft      Total Volume: 0.025 bbl

Num Fluid Samples: 0

Num Gas Bombs: 0

Serial #:

Laboratory Name:

Laboratory Location:

Recovery Comments: sampler 2000 ml mud 220 psi

# Pressure vs. Time

