



**TRILOBITE  
TESTING, INC.**

# DRILL STEM TEST REPORT

Shakespeare Oil Co. Inc

**22-17s-33w Scott Co. KS**

202 W Main St.  
Salem IL 62881

**Rudolph # 1-22**

Job Ticket: 49230

**DST#: 3**

ATTN: Tim Priest

Test Start: 2013.04.10 @ 06:46:00

## GENERAL INFORMATION:

Formation: **LKC " L "**

Deviated: No Whipstock: ft (KB)

Time Tool Opened: 10:21:40

Time Test Ended: 15:47:25

Test Type: Conventional Bottom Hole (Reset)

Tester: Will MacLean

Unit No: 58

**Interval: 4305.00 ft (KB) To 4340.00 ft (KB) (TVD)**

Total Depth: 4340.00 ft (KB) (TVD)

Hole Diameter: 7.88 inches Hole Condition: Good

Reference Elevations: 3033.00 ft (KB)

3025.00 ft (CF)

KB to GR/CF: 8.00 ft

**Serial #: 8674**

**Inside**

Press @ Run Depth: 787.46 psig @ 4308.00 ft (KB)

Start Date: 2013.04.10

End Date:

2013.04.10

Start Time: 06:46:00

End Time:

15:47:25

Capacity: 8000.00 psig

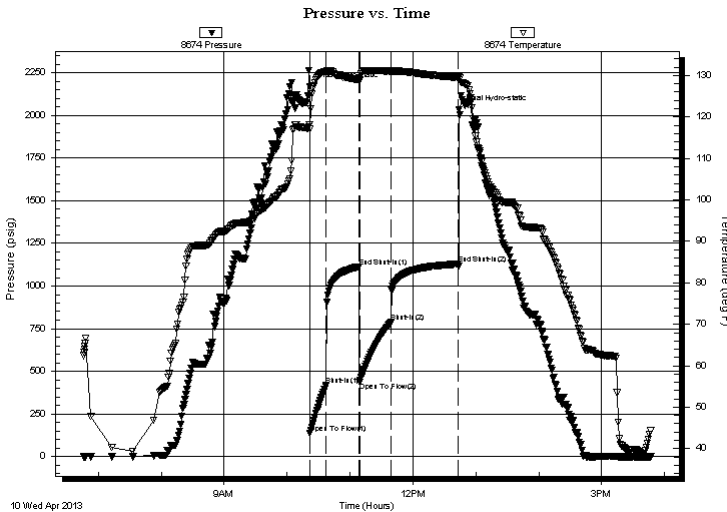
Last Calib.: 2013.04.10

Time On Btm: 2013.04.10 @ 10:21:25

Time Off Btm: 2013.04.10 @ 12:43:54

**TEST COMMENT:** IF- Surface Blow Built to BOB in 2min  
IS- No Blow  
FF- Surface Blow Built to BOB in 2 3/4min  
FS- No Blow

## PRESSURE SUMMARY



Time (Min.)	Pressure (psig)	Temp (deg F)	Annotation
0	2167.24	118.20	Initial Hydro-static
1	135.83	117.09	Open To Flow (1)
16	420.07	130.93	Shut-In(1)
47	1113.21	128.90	End Shut-In(1)
48	437.04	128.68	Open To Flow (2)
78	787.46	131.06	Shut-In(2)
142	1128.86	129.53	End Shut-In(2)
143	2035.21	129.77	Final Hydro-static

## Recovery

Length (ft)	Description	Volume (bbl)
863.00	MCW 5%w 95%w	11.02
496.00	MCW 14%w 86%w	6.96
248.00	WCM 45%w 55%w	3.48
206.00	WCM 27%w 73%w with a Few Oil Sp	2.89

## Gas Rates

	Choke (inches)	Pressure (psig)	Gas Rate (Mcf/d)

\* Recovery from multiple tests



**TRILOBITE  
TESTING, INC.**

# DRILL STEM TEST REPORT

**FLUID SUMMARY**

Shakespeare Oil Co. Inc

**22-17s-33w Scott Co. KS**

202 W Main St.  
Salem IL 62881

**Rudolph # 1-22**

Job Ticket: 49230

**DST#: 3**

ATTN: Tim Priest

Test Start: 2013.04.10 @ 06:46:00

## Mud and Cushion Information

Mud Type: Gel Chem  
Mud Weight: 9.00 lb/gal  
Viscosity: 50.00 sec/qt  
Water Loss: 7.39 in<sup>3</sup>  
Resistivity: ohm.m  
Salinity: 5800.00 ppm  
Filter Cake: 1.00 inches

Cushion Type:  
Cushion Length: ft  
Cushion Volume: bbl  
Gas Cushion Type:  
Gas Cushion Pressure: psig

Oil API: deg API  
Water Salinity: 55000 ppm

## Recovery Information

Recovery Table

Length ft	Description	Volume bbl
863.00	MCW 5% <i>m</i> 95% <i>w</i>	11.022
496.00	MCW 14% <i>m</i> 86% <i>w</i>	6.958
248.00	WCM 45% <i>w</i> 55% <i>m</i>	3.479
206.00	WCM 27% <i>w</i> 73% <i>m</i> with a Few Oil Spots	2.890

Total Length: 1813.00 ft      Total Volume: 24.349 bbl

Num Fluid Samples: 0

Num Gas Bombs: 0

Serial #:

Laboratory Name:

Laboratory Location:

Recovery Comments: RW is .218 @ 43f = 55000

Serial #: 8674

Inside

Shakespeare Oil Co. Inc

Rudolph # 1-22

DST Test Number: 3

