



**TRILOBITE  
TESTING, INC.**

# DRILL STEM TEST REPORT

Shakespeare Oil Co. Inc

**22-17s-33w Scott Co. KS**

202 W Main St.  
Salem IL 62881

**Rudolph # 1-22**

Job Ticket: 49231

**DST#: 4**

ATTN: Tim Priest

Test Start: 2013.04.11 @ 07:28:00

## GENERAL INFORMATION:

Formation: **Marmanton**

Deviated: No Whipstock: ft (KB)

Time Tool Opened: 10:08:40

Time Test Ended: 15:04:39

Test Type: Conventional Bottom Hole (Reset)

Tester: Will MacLean

Unit No: 58

**Interval: 4378.00 ft (KB) To 4427.00 ft (KB) (TVD)**

Total Depth: 4427.00 ft (KB) (TVD)

Hole Diameter: 7.88 inches Hole Condition: Good

Reference Elevations: 3033.00 ft (KB)

3025.00 ft (CF)

KB to GR/CF: 8.00 ft

**Serial #: 8674 Inside**

Press @ Run Depth: 28.98 psig @ 4382.00 ft (KB)

Start Date: 2013.04.11

End Date:

2013.04.11

Start Time: 07:28:00

End Time:

15:04:39

Capacity: 8000.00 psig

Last Calib.: 2013.04.11

Time On Btm: 2013.04.11 @ 10:08:10

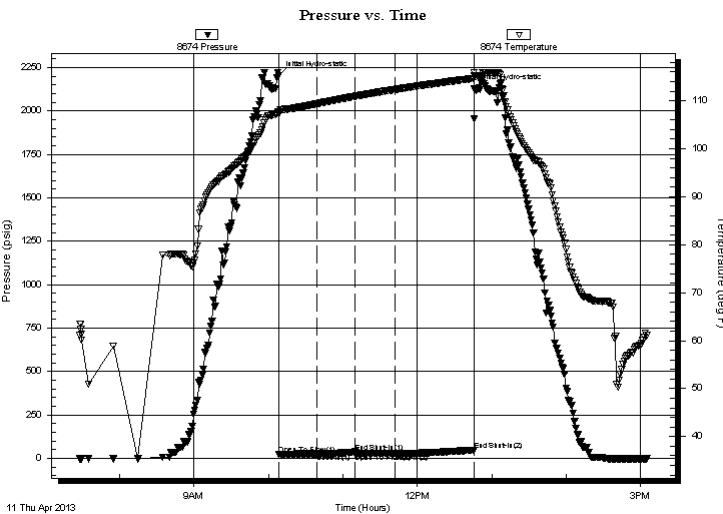
Time Off Btm: 2013.04.11 @ 12:45:54

**TEST COMMENT:** IF- Weak Surface Blow Died in 9 min

IS- No Blow

FF- No Blow

FS- No Blow



## PRESSURE SUMMARY

| Time (Min.) | Pressure (psig) | Temp (deg F) | Annotation           |
|-------------|-----------------|--------------|----------------------|
| 0           | 2202.48         | 107.61       | Initial Hydro-static |
| 1           | 24.50           | 107.39       | Open To Flow (1)     |
| 31          | 27.20           | 109.40       | Shut-In(1)           |
| 62          | 37.59           | 110.93       | End Shut-In(1)       |
| 62          | 26.92           | 110.93       | Open To Flow (2)     |
| 94          | 28.98           | 112.33       | Shut-In(2)           |
| 158         | 48.52           | 114.68       | End Shut-In(2)       |
| 158         | 2127.77         | 115.24       | Final Hydro-static   |

## Recovery

| Length (ft) | Description                    | Volume (bbl) |
|-------------|--------------------------------|--------------|
| 20.00       | 100% mud Few Oil Spots in Tool | 0.10         |
|             |                                |              |
|             |                                |              |
|             |                                |              |
|             |                                |              |

## Gas Rates

| Choke (inches) | Pressure (psig) | Gas Rate (Mcf/d) |
|----------------|-----------------|------------------|
|                |                 |                  |

\* Recovery from multiple tests



**TRILOBITE  
TESTING, INC.**

# DRILL STEM TEST REPORT

**FLUID SUMMARY**

Shakespeare Oil Co. Inc

**22-17s-33w Scott Co. KS**

202 W Main St.  
Salem IL 62881

**Rudolph # 1-22**

Job Ticket: 49231

**DST#: 4**

ATTN: Tim Priest

Test Start: 2013.04.11 @ 07:28:00

## Mud and Cushion Information

Mud Type: Gel Chem

Cushion Type:

Oil API:

deg API

Mud Weight: 9.00 lb/gal

Cushion Length:

ft

Water Salinity:

ppm

Viscosity: 58.00 sec/qt

Cushion Volume:

bbf

Water Loss: 7.59 in<sup>3</sup>

Gas Cushion Type:

Resistivity: ohm.m

Gas Cushion Pressure:

psig

Salinity: 6800.00 ppm

Filter Cake: 1.00 inches

## Recovery Information

Recovery Table

| Length<br>ft | Description                    | Volume<br>bbf |
|--------------|--------------------------------|---------------|
| 20.00        | 100% mud Few Oil Spots in Tool | 0.098         |

Total Length: 20.00 ft Total Volume: 0.098 bbf

Num Fluid Samples: 0

Num Gas Bombs: 0

Serial #:

Laboratory Name:

Laboratory Location:

Recovery Comments:

Serial #: 8674

Inside

Shakespeare Oil Co. Inc

Rudolph # 1-22

DST Test Number: 4

