



**TRILOBITE  
TESTING, INC.**

# DRILL STEM TEST REPORT

Shakespeare Oil Co. Inc

**22-17s-33w Scott Co. KS**

202 W Main St.  
Salem IL 62881

**Rudolph # 1-22**

Job Ticket: 49121

**DST#: 5**

ATTN: Tim Priest

Test Start: 2013.04.12 @ 06:51:36

## GENERAL INFORMATION:

Formation: **Marmaton "B"**

Deviated: No Whipstock: ft (KB)

Time Tool Opened: 09:37:21

Time Test Ended: 15:14:51

Test Type: Conventional Bottom Hole (Reset)

Tester: Tate Lang

Unit No: 58

**Interval: 4430.00 ft (KB) To 4425.00 ft (KB) (TVD)**

Reference Elevations: 3033.00 ft (KB)

Total Depth: 4455.00 ft (KB) (TVD)

3025.00 ft (CF)

Hole Diameter: 7.88 inches Hole Condition: Good

KB to GR/CF: 8.00 ft

**Serial #: 8674**

**Inside**

Press @ RunDepth: 363.45 psig @ 4431.00 ft (KB)

Capacity: 8000.00 psig

Start Date: 2013.04.12

End Date:

2013.04.12

Last Calib.:

2013.04.12

Start Time: 06:51:41

End Time:

15:14:50

Time On Btm:

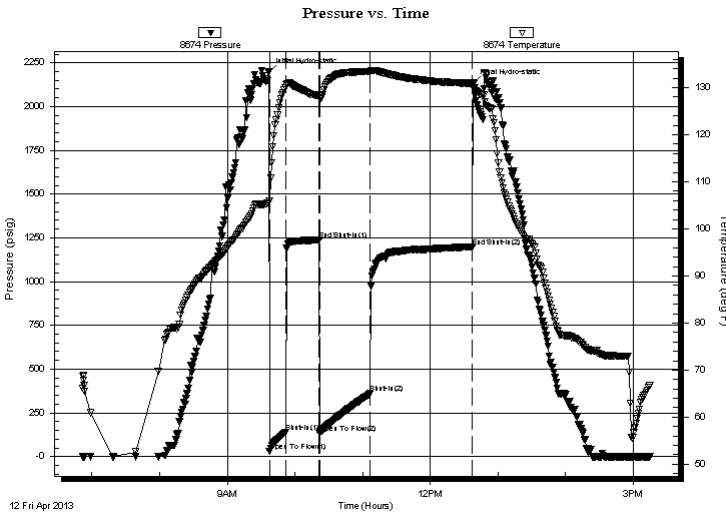
2013.04.12 @ 09:36:51

Time Off Btm:

2013.04.12 @ 12:37:51

**TEST COMMENT:** B.O.B. In 10 mins.  
Dead no blow back.  
B.O.B. in 10 mins.  
Dead no blow back.

## PRESSURE SUMMARY



Time (Min.)	Pressure (psig)	Temp (deg F)	Annotation
0	2195.72	105.58	Initial Hydro-static
1	30.54	105.88	Open To Flow (1)
15	138.15	130.07	Shut-In(1)
45	1236.78	128.33	End Shut-In(1)
45	134.82	127.62	Open To Flow (2)
90	363.45	133.40	Shut-In(2)
181	1199.40	130.86	End Shut-In(2)
181	2132.21	131.08	Final Hydro-static

## Recovery

Length (ft)	Description	Volume (bbl)
420.00	2%M 98%W	4.81
180.00	15%M 85%W	2.52
60.00	30%M 70%W	0.84
160.00	40%W 60%M	2.24

## Gas Rates

	Choke (inches)	Pressure (psig)	Gas Rate (Mcf/d)

\* Recovery from multiple tests



**TRILOBITE  
TESTING, INC.**

# DRILL STEM TEST REPORT

**FLUID SUMMARY**

Shakespeare Oil Co. Inc

**22-17s-33w Scott Co. KS**

202 W Main St.  
Salem IL 62881

**Rudolph # 1-22**

Job Ticket: 49121

**DST#: 5**

ATTN: Tim Priest

Test Start: 2013.04.12 @ 06:51:36

## Mud and Cushion Information

Mud Type: Gel Chem	Cushion Type:	Oil API:	deg API
Mud Weight: 9.00 lb/gal	Cushion Length: ft	Water Salinity:	47000 ppm
Viscosity: 58.00 sec/qt	Cushion Volume: bbl		
Water Loss: 7.60 in <sup>3</sup>	Gas Cushion Type:		
Resistivity: ohm.m	Gas Cushion Pressure: psig		
Salinity: 6800.00 ppm			
Filter Cake: 1.00 inches			

## Recovery Information

Recovery Table

Length ft	Description	Volume bbl
420.00	2%M 98%W	4.807
180.00	15%M 85%W	2.525
60.00	30%M 70%W	0.842
160.00	40%W 60%M	2.244

Total Length: 820.00 ft      Total Volume: 10.418 bbl

Num Fluid Samples: 0

Num Gas Bombs: 0

Serial #:

Laboratory Name:

Laboratory Location:

Recovery Comments: RW .152 @ 68F = 47000

Serial #: 8674

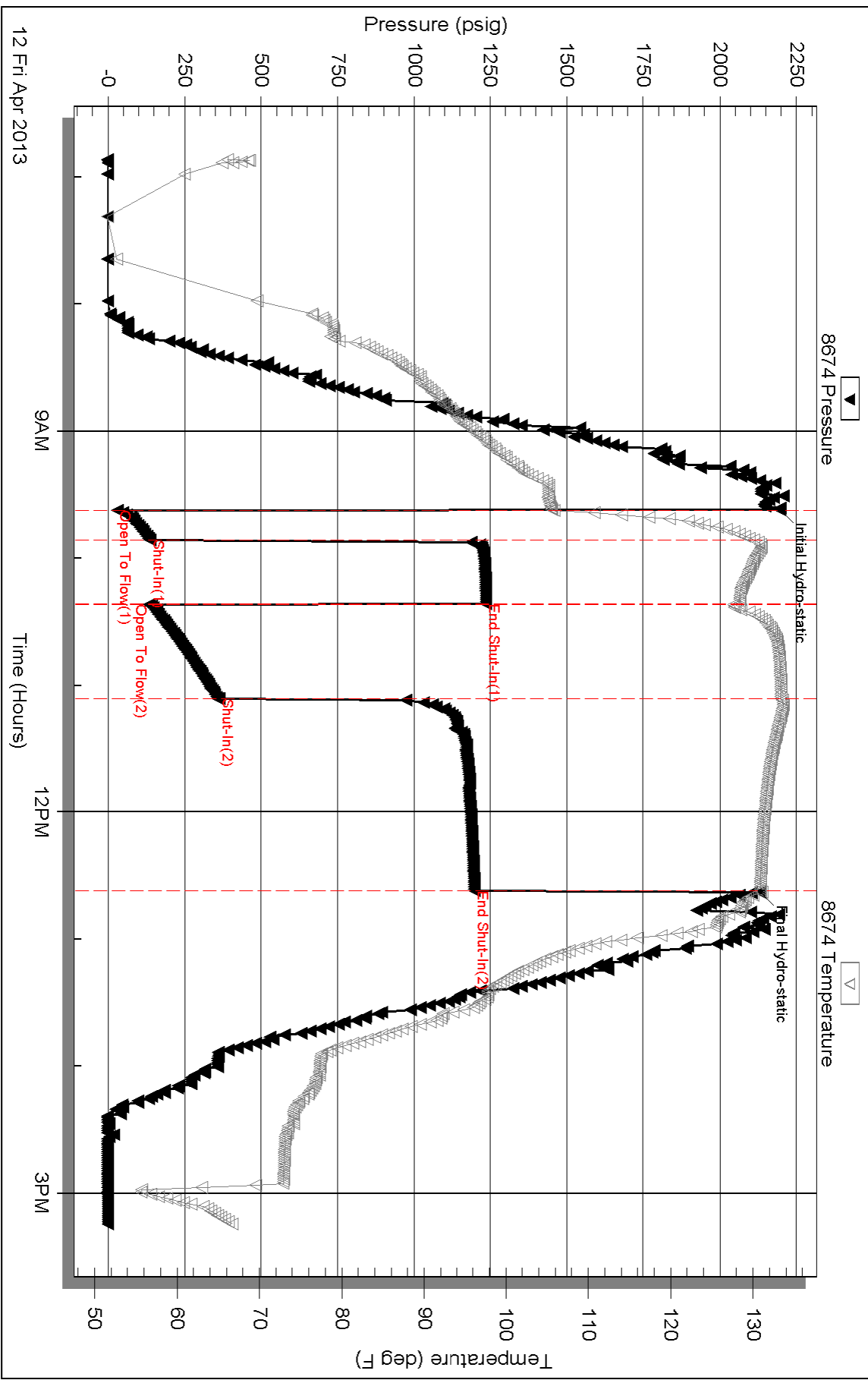
Inside

Shakespeare Oil Co. Inc

Rudolph # 1-22

DST Test Number: 5

### Pressure vs. Time



Triobite Testing, Inc

Ref. No: 49121

Printed: 2013.04.12 @ 15:56:58