



**TRILOBITE
TESTING, INC.**

DRILL STEM TEST REPORT

Shakespeare Oil Co. Inc

22-17s-33w Scott Co. KS

202 W Main St.
Salem IL 62881

Rudolph # 1-22

Job Ticket: 49124

DST#: 7

ATTN: Tim Priest

Test Start: 2013.04.14 @ 17:42:03

GENERAL INFORMATION:

Formation: **Marrow**

Deviated: No Whipstock: ft (KB)

Time Tool Opened: 20:12:48

Time Test Ended: 01:58:03

Test Type: Conventional Bottom Hole (Reset)

Tester: Tate Lang

Unit No: 58

Interval: 4635.00 ft (KB) To 4703.00 ft (KB) (TVD)

Reference Elevations: 3033.00 ft (KB)

Total Depth: 4703.00 ft (KB) (TVD)

3025.00 ft (CF)

Hole Diameter: 7.88 inches Hole Condition: Good

KB to GR/CF: 8.00 ft

Serial #: 8674 Inside

Press @ Run Depth: 50.00 psig @ 4636.00 ft (KB)

Capacity: 8000.00 psig

Start Date: 2013.04.14

End Date:

2013.04.15

Last Calib.: 2013.04.15

Start Time: 17:42:08

End Time:

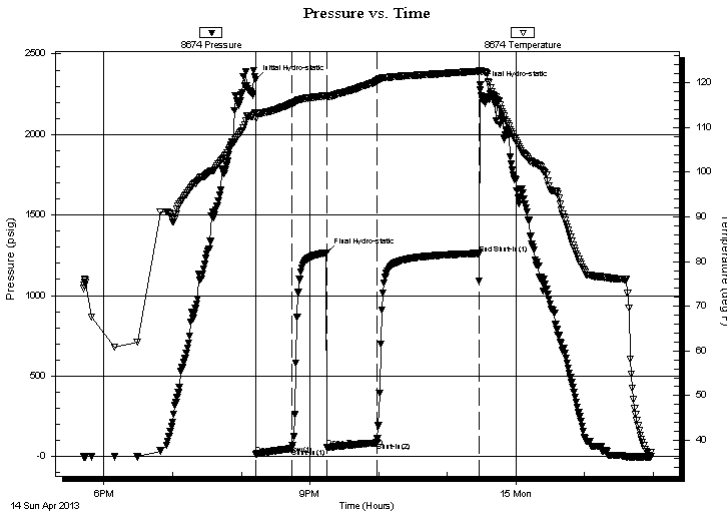
01:58:02

Time On Btm: 2013.04.14 @ 20:12:33

Time Off Btm: 2013.04.14 @ 21:14:18

TEST COMMENT: Weak surface blow built to 1 1/2 in.
Dead no blow back
Fair surface blow built to 6 in.
Weak surface blow

PRESSURE SUMMARY



Time (Min.)	Pressure (psig)	Temp (deg F)	Annotation
0	2343.47	113.30	Initial Hydro-static
1	15.26	112.09	Open To Flow (1)
32	50.00	115.36	Shut-In(1)
62	1265.91	117.14	Final Hydro-static
63	56.74	116.80	Open To Flow (2)
106	86.52	120.38	Shut-In(2)
195	1261.81	122.61	End Shut-In(1)
196	2306.53	122.79	Final Hydro-static

Recovery

Length (ft)	Description	Volume (bbl)
60.00	5%G 20%O 75%M	0.30
60.00	5%G 20%M 75%O	0.30
65.00	25%G 75%O	0.91
0.00	175 GIP	0.00

* Recovery from multiple tests

Gas Rates

	Choke (inches)	Pressure (psig)	Gas Rate (Mcf/d)



**TRILOBITE
TESTING, INC.**

DRILL STEM TEST REPORT

FLUID SUMMARY

Shakespeare Oil Co. Inc

22-17s-33w Scott Co. KS

202 W Main St.
Salem IL 62881

Rudolph # 1-22

Job Ticket: 49124

DST#: 7

ATTN: Tim Priest

Test Start: 2013.04.14 @ 17:42:03

Mud and Cushion Information

Mud Type: Gel Chem

Cushion Type:

Oil API:

27 deg API

Mud Weight: 9.00 lb/gal

Cushion Length:

ft

Water Salinity:

ppm

Viscosity: 56.00 sec/qt

Cushion Volume:

bbbl

Water Loss: 7.99 in³

Gas Cushion Type:

Resistivity: ohm.m

Gas Cushion Pressure:

psig

Salinity: 7000.00 ppm

Filter Cake: 1.00 inches

Recovery Information

Recovery Table

Length ft	Description	Volume bbbl
60.00	5%G 20%O 75%M	0.295
60.00	5%G 20%M 75%O	0.304
65.00	25%G 75%O	0.912
0.00	175 GIP	0.000

Total Length: 185.00 ft Total Volume: 1.511 bbl

Num Fluid Samples: 0

Num Gas Bombs: 0

Serial #:

Laboratory Name:

Laboratory Location:

Recovery Comments: AIP 26 @ 50 F = 27

Serial #: 8674

Inside

Shakespeare Oil Co. Inc

Rudolph # 1-22

DST Test Number: 7

